

Educational Initiatives



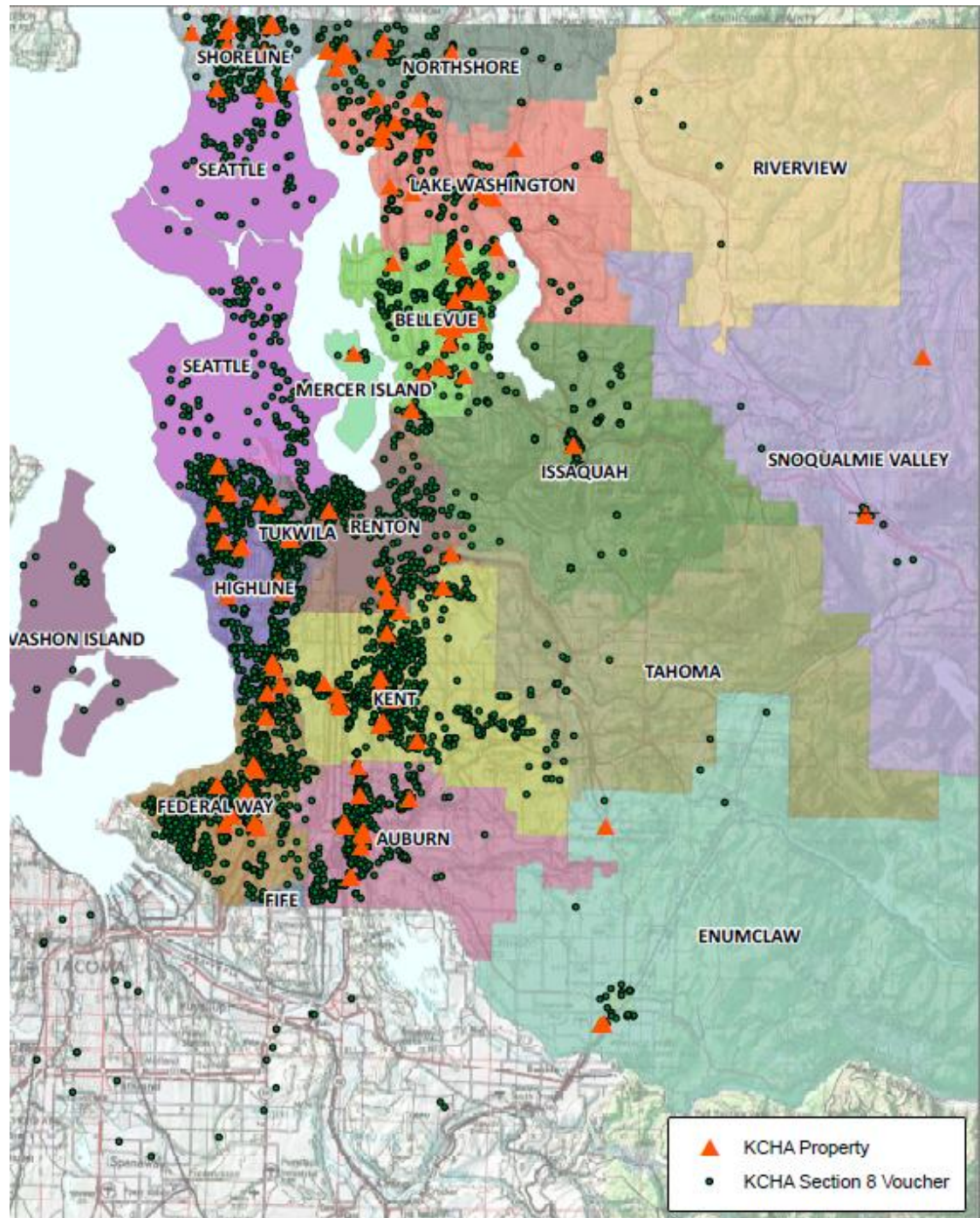
King County
Housing
Authority

King County Housing Authority Families



- 20,000 Children
- Average Income: \$18,000
- 70% Minority
- 34% Non-English Speaking

KCHA portfolio by school district



Shared Concerns and Opportunities



- Housing Security
- Classroom Stability
- Access to High Quality Early Learning
- Aligned Out-of-School Programs
- Parent and Family Engagement

Rapid Rehousing of Homeless Children

Housing Security

Classroom Stability

Access to High Quality Early Learning

Aligned Out-of-School Programs

Parent and Family Engagement



- 6,188 children reported homeless in King County by School Districts in 2012-2013
- \$5.9 million in education funds spent on transporting these children to their school of origin
- KCHA's Rapid Rehousing Pilot in Highline School District

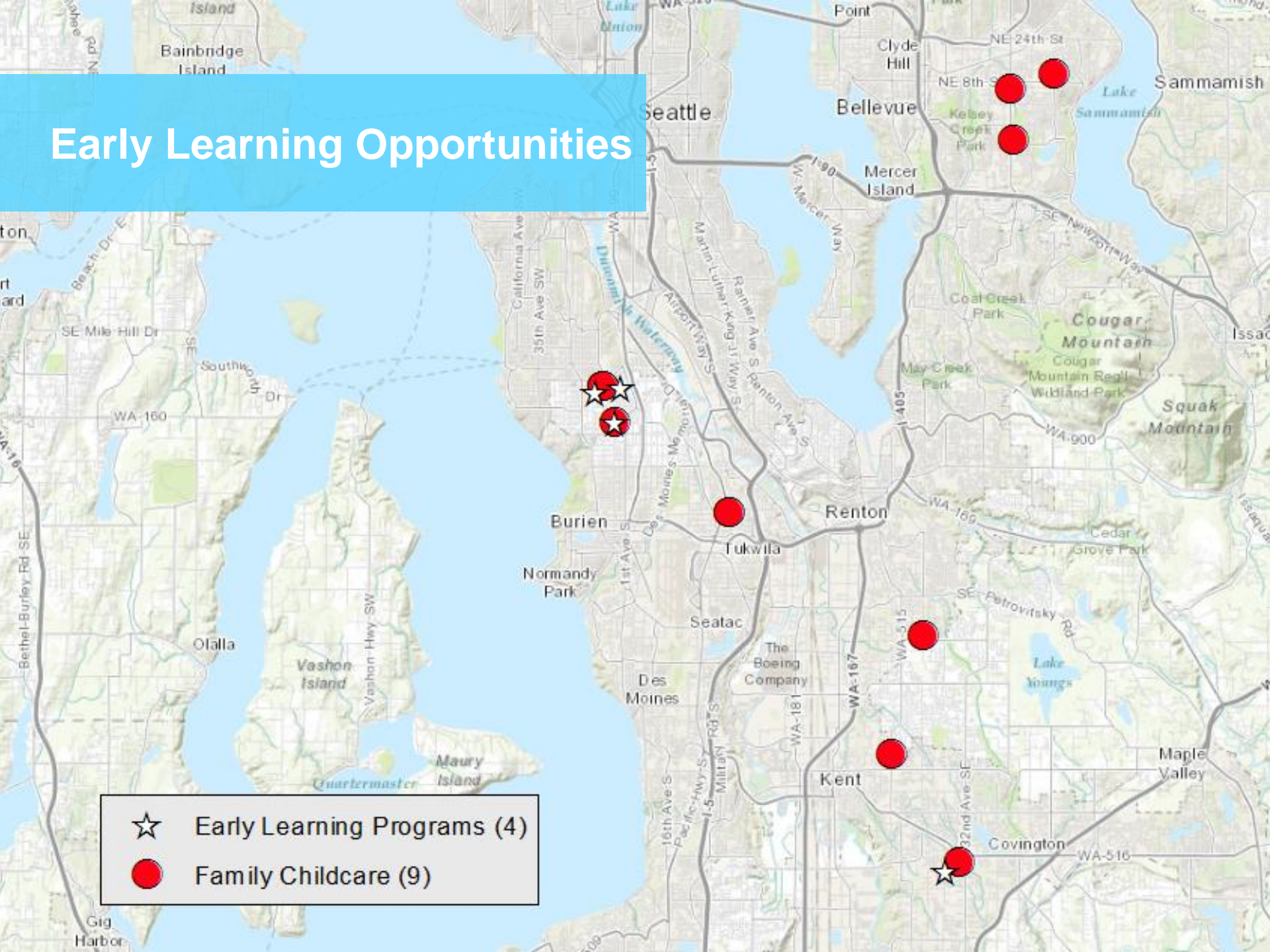
Changing Schools Mid-Year Disrupts Individual and Classroom Learning

Housing Security
Classroom Stability
Access to High Quality Early Learning
Aligned Out-of-School Programs
Parent and Family Engagement



- 20% of students in South King County switched schools within the last year
- Approximately 1,510 Section 8 children move within a year – 72% move during the school year
- KCHA's Housing Stability Counseling Initiative

Early Learning Opportunities



Early Learning Programs (4)



Family Childcare (9)

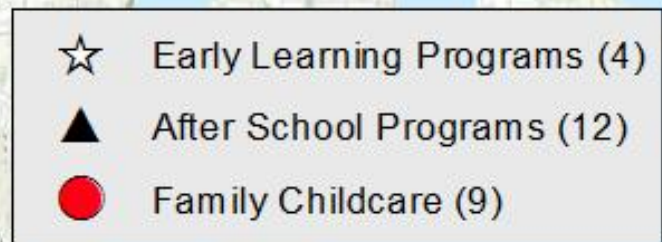


Family Childcare



HeadStart

Complementary Learning



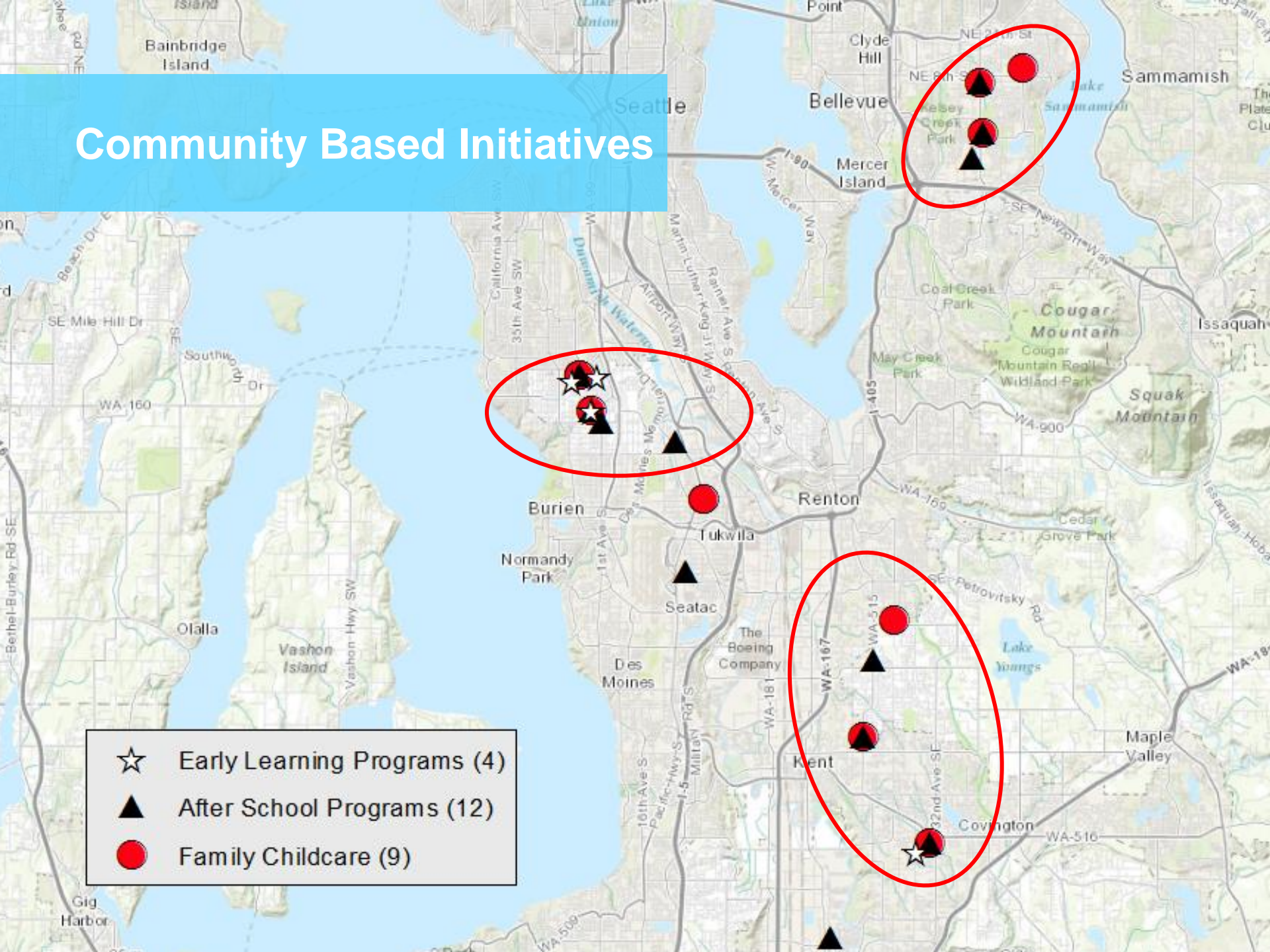




Parent and Family
Engagement

Community Based Initiatives

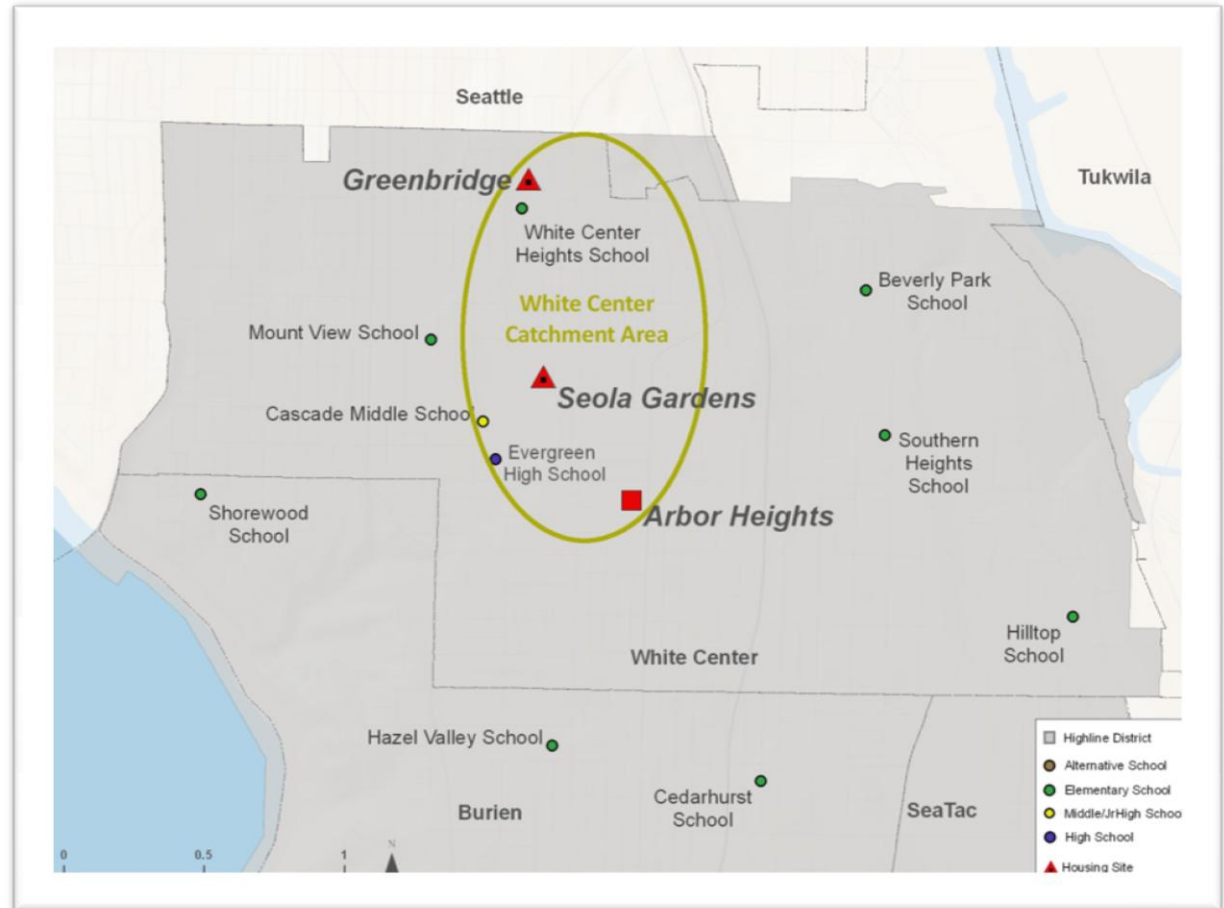
- ☆ Early Learning Programs (4)
- ▲ After School Programs (12)
- Family Childcare (9)



WHITE CENTER

Housing Security
Classroom Stability
Access to High Quality Early Learning
Aligned Out-of-School Programs
Parent and Family Engagement

- Approximately 950 children in KCHA properties and 160 with tenant-based vouchers
- Average household income is \$16,300
- Major languages include Vietnamese, Cambodian, and Somali
- Major partners:
 - Childcare Resources
 - Highline Community College
 - Highline School District
 - Neighborhood House
 - Puget Sound ESD
 - SW Boys & Girls Club
 - SW Youth & Family Services
 - White Center Promise



DASHBOARD

Housing Security
 Classroom Stability
 Access to High Quality Early Learning
 Aligned Out-of-School Programs
 Parent and Family Engagement



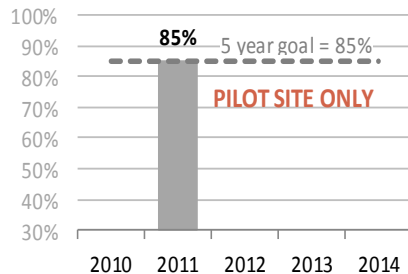
Goal 1

Families are engaged in their children's learning.



Family Participation

Parents attending Parent-Teacher Conferences



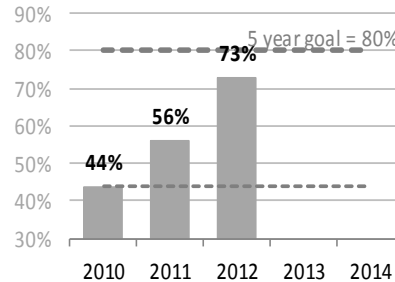
Goal 2

Children enter kindergarten ready to learn.

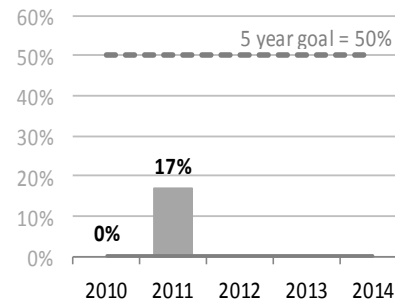


Formal Early Learning

4 year olds in Head Start



2 year olds in Parent-Child Home Program



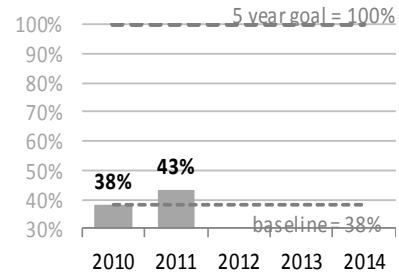
Goal 3

Students read at standard by the end of 3rd grade.



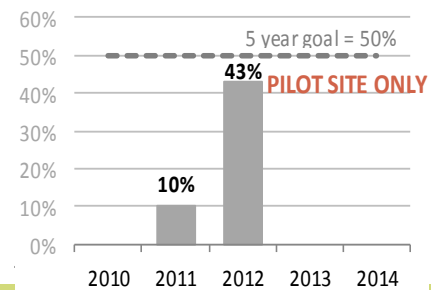
Students meeting standard.

Students reading at standard by the end of 3rd Grade.



Students in accelerated learning.

Students attending Kindergarten Academy



DATA & EVALUATION



- **Data-Sharing Agreements in Place**
- **Regional Frame of the Road Map Project**
 - Baseline Data/Needs Assessment
 - Program Design
 - Ongoing Evaluation and Strategic Learning
 - Performance Metrics
 - Evaluating Outcomes
- **Individual Student Release Forms**
- **Sustainability**
- **Scalability**