



# Regional Food Policy Council Overview

SeaTac City Council  
March 11, 2014

# Overview



OVERVIEW

BLUEPRINTS

CONTACT

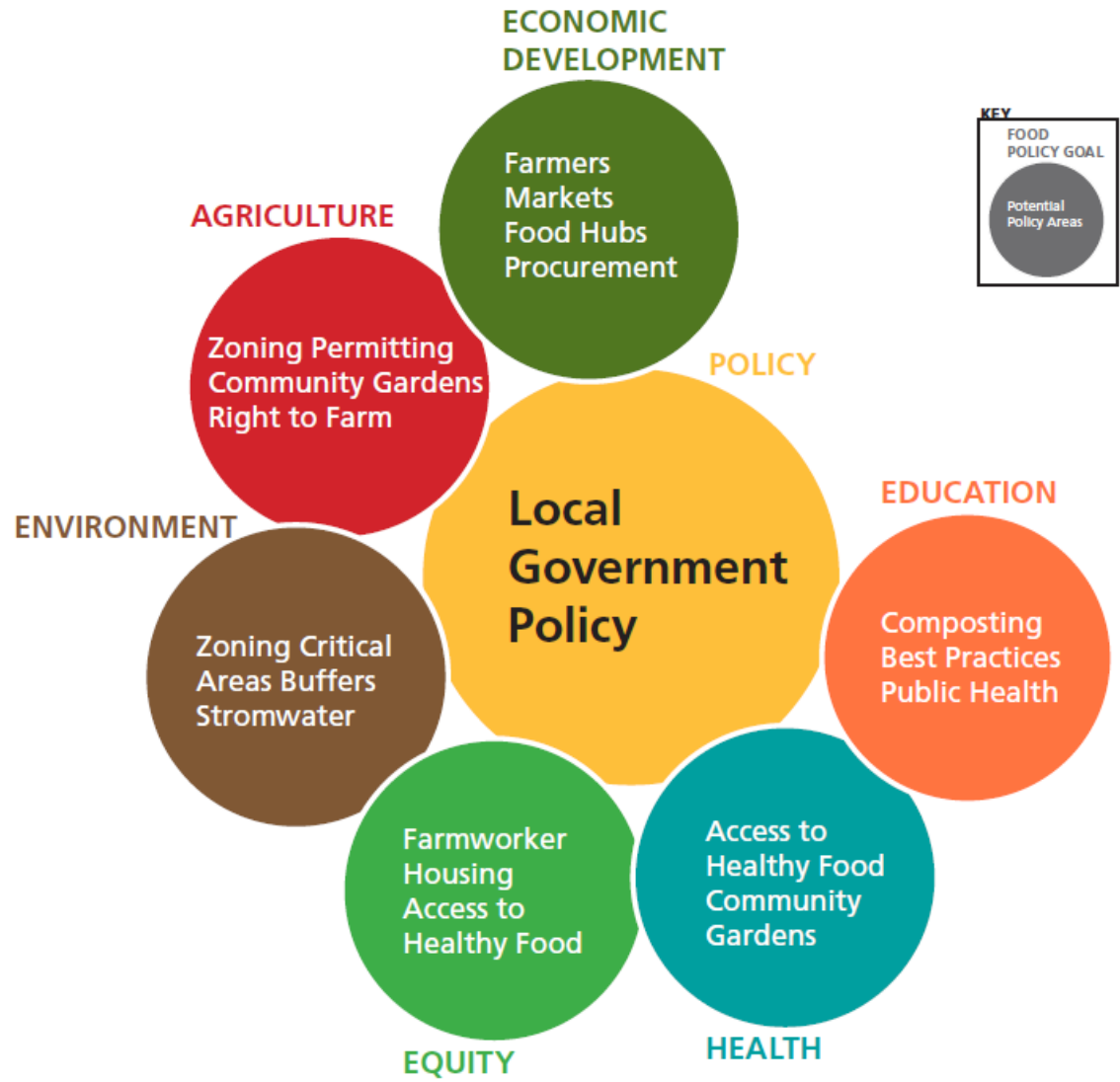
## Why Food Policy?



# Overview



- OVERVIEW
- BLUEPRINTS
- CONTACT





# Overview

## Agriculture

- From 1997 to 2007, the region lost 11.6% of its farmland and 321 farms

## Economic Impact

- Agriculture counts for more than \$8 billion of our state's revenue



OVERVIEW

BLUEPRINTS

CONTACT



# Overview



OVERVIEW

BLUEPRINTS

CONTACT

## Health and Hunger

- Over 4 million visits to regional food banks in 2008
- 26% of the region's adults are classified as obese.



# Policy Blueprints

Designed as resources for local governments

OVERVIEW

BLUEPRINTS

CONTACT

## Topics Addressed:

- Comprehensive Planning
- Farmers Markets
- Local Food Procurement
- Urban Agriculture
- Rural Farmland Preservation



# Policy Blueprints

- OVERVIEW
- BLEUPRINTS**
- CONTACT

## Farmers Markets

### Background

Farmers markets serve as an important community gathering place, economic development opportunity and connection point between producers and consumers. Farmers markets sit at the intersection of many important policy issues: nutrition and health, environmental protection, food security, economic growth, and community development. While farmers markets can provide significant benefits, urban markets are often challenged by complicated, expensive permitting; lack of stable, long-term locations; and underfunding.

Both locally and nationwide, local governments have taken steps to remove barriers and improve access for farmers markets. This can include establishing a clear code definition for farmers markets, amending codes to allow farmers markets in appropriate zones, allowing markets on city-owned property, streamlining permitting, and establishing a program to sponsor farmers markets. Jurisdictions may also consider supportive steps they can take to facilitate acceptance of electronic payment and food assistance benefits at farmers markets.

**Recommendation: Streamline permitting and fees to remove barriers to establishing and maintaining a farmers market.**

Several local jurisdictions have identified licensing and fee schedule improvements to streamline the permitting process for farmers markets. The cities of Gold Bar and Seattle have both considered how to support their farmers markets by streamlining or exempting markets from fees, licenses, or permits. The City of Gold Bar exempts operators at farmers markets from business licenses, while the City of Seattle completed a process in 2009 to streamline market requirements and fees. MRSC has collected other state and local approaches on their [Farmers Market](#) page.

### Local Examples: Streamlined Processes

#### Gold Bar

[5.04.040\(C\)\(10\) - Business Licenses](#)

The following shall be exempt from the licensing provisions of this chapter and are not required to comply with the licensing requirements of this chapter: Businesses operating at a "farmers" market or other city-sponsored or -approved activity so long as the activity does not occur more than one (1) time per week for more than five (5) months of each calendar year; and provided that the name, address, and telephone number is submitted to the city on a city business license application form, in advance.

#### Seattle

Streamlined fees and permitting: [Seattle Farmers Market Ordinance](#) (2009)

### Other Resources

[Zoning for Public Markets and Street Vendors](#) – APA Zoning Practice (2009)

[Establishing Land Use Protections for Farmers Markets](#) - Public Health Law and Policy (2009)

[Community Health and Food Access: The Local Government Role](#) - International City/County Management Association (2006)

[King County Farmers Market Report](#) – King County Department of Natural Resources and Parks (2010)

Topic

Background

Recommendations  
with examples

Resources





# Policy Blueprints

## Comprehensive Plan Policies

*Incorporate supportive policies in the comprehensive plan:*

- Agriculture and community gardening
- Healthy food access
- Local food economy
- Procurement

OVERVIEW

BLUEPRINTS

CONTACT





# Policy Blueprints

## Farmers Markets

OVERVIEW  
BLUEPRINTS  
CONTACT

- Streamline permitting and fees
- Identify locations for farmers markets
- Consider permitting markets to operate on city-owned property.
- Define farmers markets

# Policy Blueprints

## Local Food Procurement

*Support institutional procurement policies that encourage purchases of locally grown food products.*

- Target Percentage of Local Food Purchases
- Mandated Percent Price Purchases
- Geographic Preference
- Comprehensive Plan Policies to Promote Local Food Procurement

OVERVIEW  
BLUEPRINTS  
CONTACT



# Policy Blueprints

## Urban Agriculture

*Facilitate urban agriculture activities by ensuring they are permitted by development regulations and other municipal code, and have adequate space to occur*

- Code Changes
- Identify land available and used for urban agriculture

OVERVIEW  
BLUEPRINTS  
CONTACT



# For More Information

Rebecca Maskin, Senior Planner  
[Rmaskin@psrc.org](mailto:Rmaskin@psrc.org), 206-464-5833

Liz Underwood-Bultmann, Associate Planner  
[lunderwood-bultmann@psrc.org](mailto:lunderwood-bultmann@psrc.org), 206-464-6174

Project Website  
<http://www.psrc.org/growth/foodpolicy>