



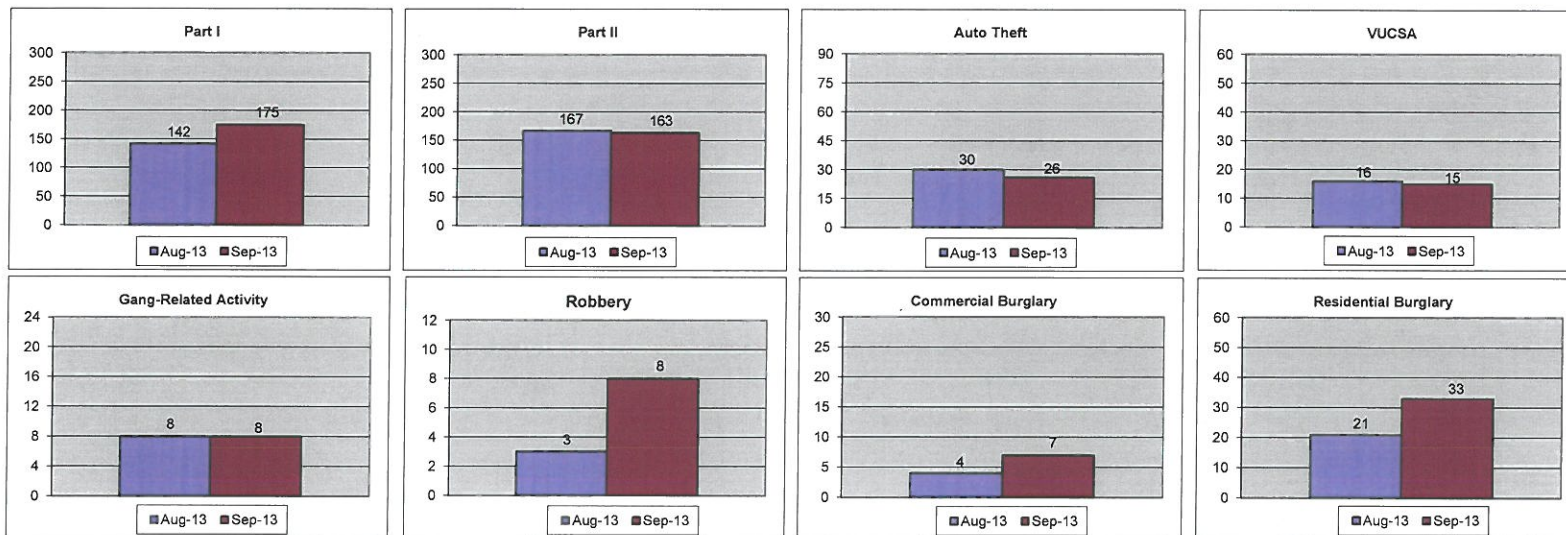
**King County Sheriff's Office
Selected Activity Counts for SeaTac
August 2013 vs. September 2013***



	Part I			Part II			Auto Theft			VUCSA			Gang-Related Activity		
	Aug-13	Sep-13	% Chg	Aug-13	Sep-13	% Chg	Aug-13	Sep-13	% Chg	Aug-13	Sep-13	% Chg	Aug-13	Sep-13	% Chg
SeaTac	142	175	23.2%	167	163	-2.4%	30	26	-13.3%	16	15	-6.3%	8	8	0.0%

	Robbery			Comm. Burglary			Res. Burglary		
	Aug-13	Sep-13	% Chg	Aug-13	Sep-13	% Chg	Aug-13	Sep-13	% Chg
SeaTac	3	8	166.7%	4	7	75.0%	21	33	57.1%

*Numbers are estimates based on CAD data.



Current Trends or Series:

Part I crime increased 23%; however, Part II crime decreased slightly. Part I crime increase mainly due to larcenies & residential burglary.

Robbery up from 3 to 8; 5 were cell phone robberies (including one Craigslist meet).

Residential burglary increased 57% & is above the 8-year average (22). About 1/3 occurred in the L2 district. One W/M/A was arrested in September 2013.

NOTES:

VUCSA = Violation of Uniform Controlled Substances Act

CAD = mainly patrol activity, including 911 calls, officer-initiated activity, etc.

Part I crimes include: Homicide, Aggravated Assault, Robbery, Rape, Burglary, Larceny, Vehicle Theft, Arson

Part II crimes include: Other Assaults, Frauds, Poss. Stolen Property, Vandalism, Vice, Sex Offenses, Controlled Substance Violations, Family/Juvenile Offenses, DUI, Concealed Weapon, Fight Disturbance, Trespass, Vandalism, Public Hazard/Nuisance