

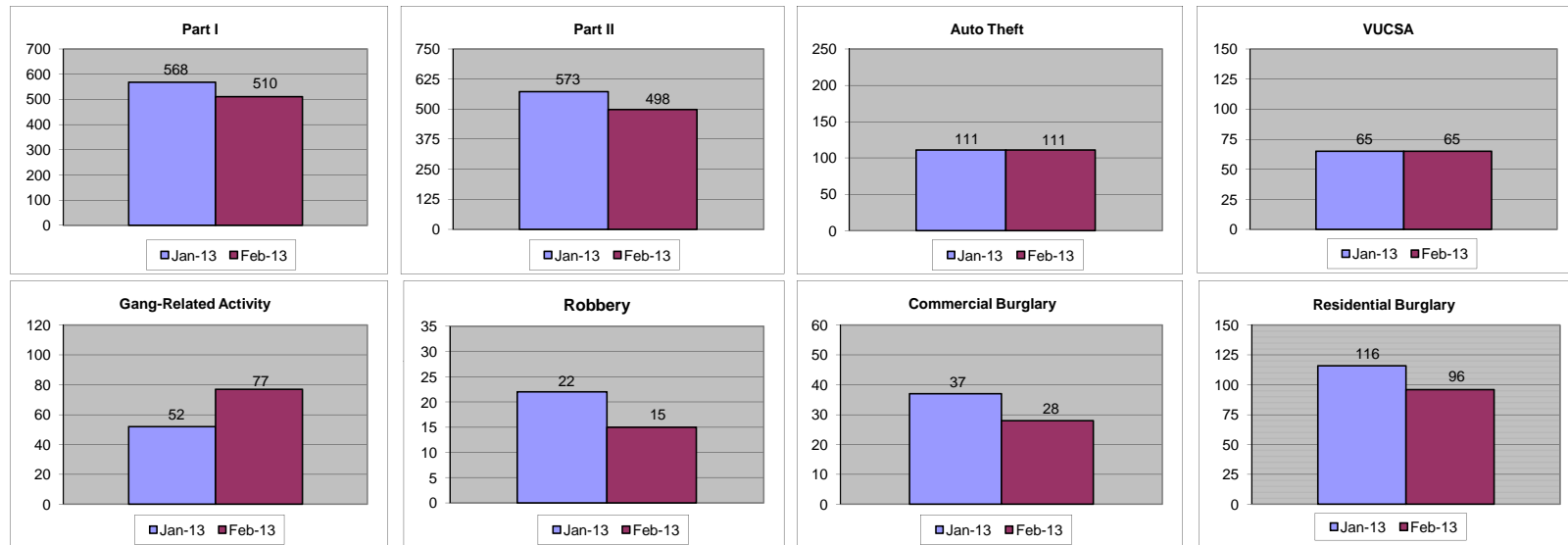


King County Sheriff's Office
Selected Activity Counts for West Precinct
Jan 2013 vs. Feb 2013*

	Part I			Part II			Auto Theft			VUCSA			Gang-Related Activity		
	Jan-13	Feb-13	% Chg	Jan-13	Feb-13	% Chg	Jan-13	Feb-13	% Chg	Jan-13	Feb-13	% Chg	Jan-13	Feb-13	% Chg
Pct 4	568	510	-10.2%	573	498	-13.1%	111	111	0.0%	65	65	0.0%	52	77	48.1%

	Robbery			Comm. Burglary			Res. Burglary		
	Jan-13	Feb-13	% Chg	Jan-13	Feb-13	% Chg	Jan-13	Feb-13	% Chg
Pct 4	22	15	-31.8%	37	28	-24.3%	116	96	-17.2%

*Numbers are estimates based on CAD data.



Current Trends or Series:

Both Part I & Part II crimes decreased (10% & 13% respectively). Part I crime decrease occurred in all areas except Skyway. Largest Part II crime decrease occurred in unincorp. KC*.

Gang-related activity increased 48%; mainly due to the city of Burien.

Robberies down from 22 to 15; decrease occurred in unincorp. KC* & the city of SeaTac.

Residential burglary decreased 17%; decrease occurred in the cities of Burien & SeaTac.

The apartment complex laundry room coin theft series (most involve the use of a torch) continued into February 2013, mainly in the cities of Burien & SeaTac (one in K1). (Tukwila & Federal Way reported similar thefts.) However, there have been none reported since 2/25/13 - the day before detectives did knock-&-talks. Det. Gillette is the lead detective.

*Unincorporated-K sector includes K1, K11, K7.
 Spreadsheet created by Jodi Hobbs, Centralized Crime Analyst/RPIS Unit, on 3/6/13

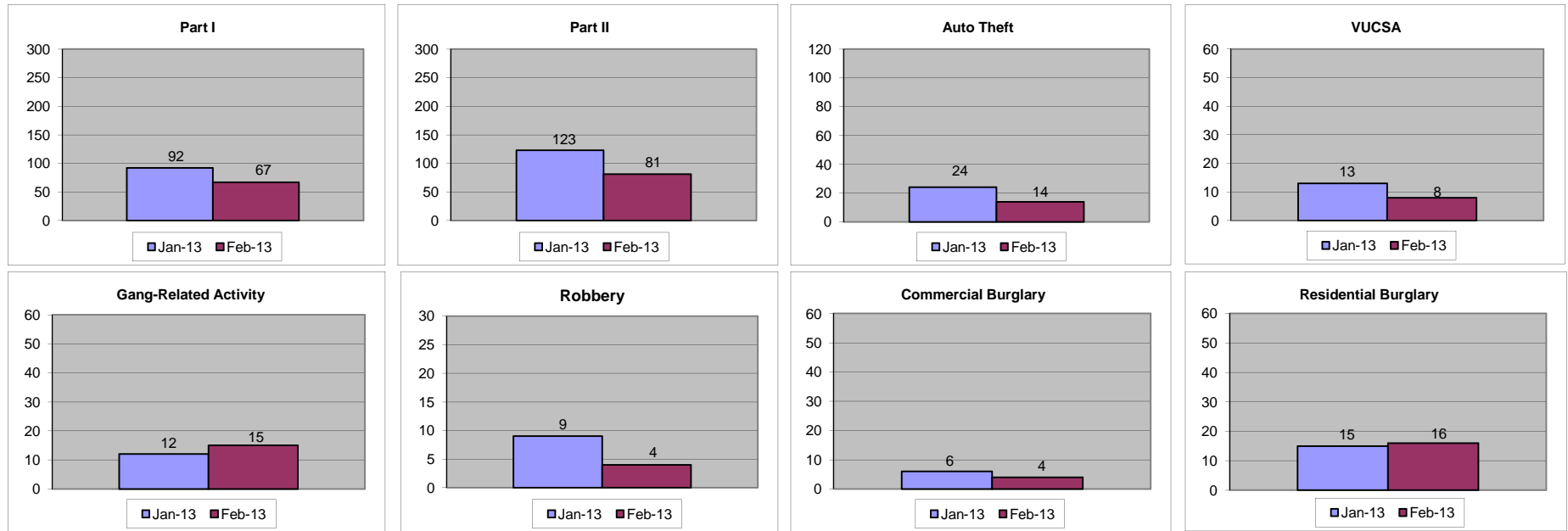


**King County Sheriff's Office
Selected Activity Counts for K1, K11, K7
Jan 2013 vs. Feb 2013***

	Part I			Part II			Auto Theft			VUCSA			Gang-Related Activity		
	Jan-13	Feb-13	% Chg	Jan-13	Feb-13	% Chg	Jan-13	Feb-13	% Chg	Jan-13	Feb-13	% Chg	Jan-13	Feb-13	% Chg
K1, K11, K7	92	67	-27.2%	123	81	-34.1%	24	14	-41.7%	13	8	-38.5%	12	15	25.0%

	Robbery			Comm. Burglary			Res. Burglary		
	Jan-13	Feb-13	% Chg	Jan-13	Feb-13	% Chg	Jan-13	Feb-13	% Chg
K1, K11, K7	9	4	-55.6%	6	4	-33.3%	15	16	6.7%

*Numbers are estimates based on CAD data.



Current Trends or Series:

Part I crime decreased 27%. After a high number in January 2013, Part II crime decreased 34%.

Auto theft decreased 42% & is below the average since April 2010 annexation (18).

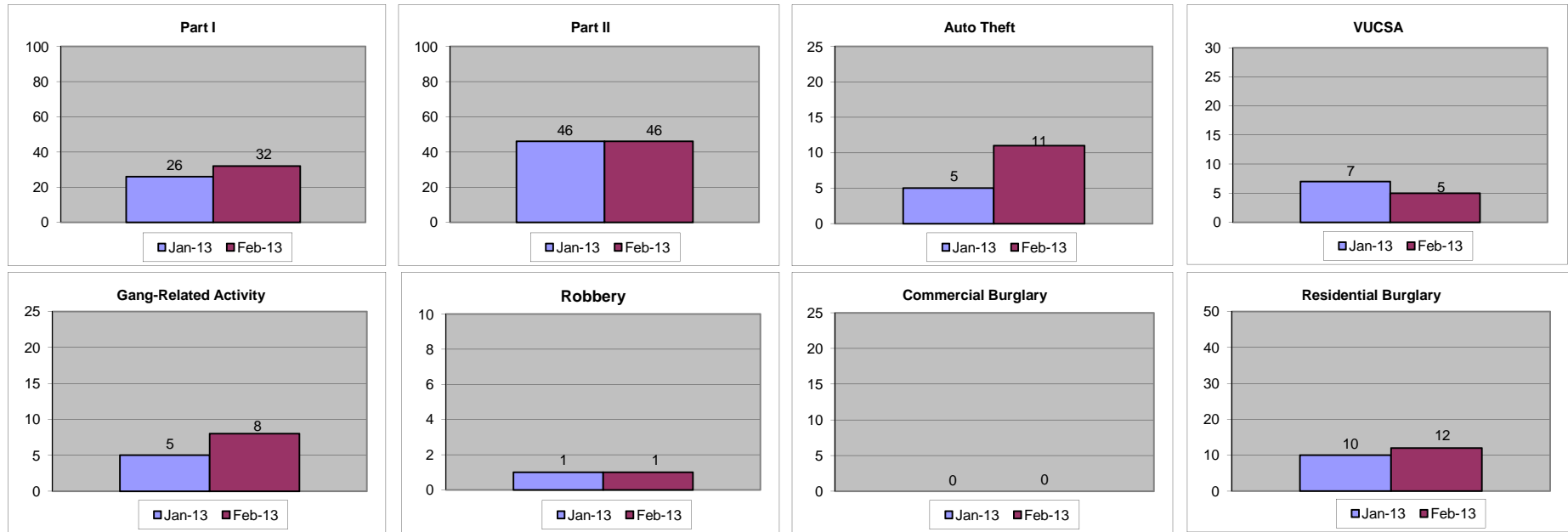


King County Sheriff's Office
Selected Activity Counts for Skyway (K8)
Jan 2013 vs. Feb 2013*

	Part I			Part II			Auto Theft			VUCSA			Gang-Related Activity		
	Jan-13	Feb-13	% Chg	Jan-13	Feb-13	% Chg	Jan-13	Feb-13	% Chg	Jan-13	Feb-13	% Chg	Jan-13	Feb-13	% Chg
Skyway	26	32	23.1%	46	46	0.0%	5	11	120.0%	7	5	-28.6%	5	8	60.0%

	Robbery			Comm. Burglary			Res. Burglary		
	Jan-13	Feb-13	% Chg	Jan-13	Feb-13	% Chg	Jan-13	Feb-13	% Chg
Skyway	1	1	0.0%	0	0	N/A	10	12	20.0%

*Numbers are estimates based on CAD data.



Current Trends or Series:

Part I crime increased 23%. Part II crime remained unchanged.

Auto theft up from 5 to 11, but remains near the 8-year average (9).



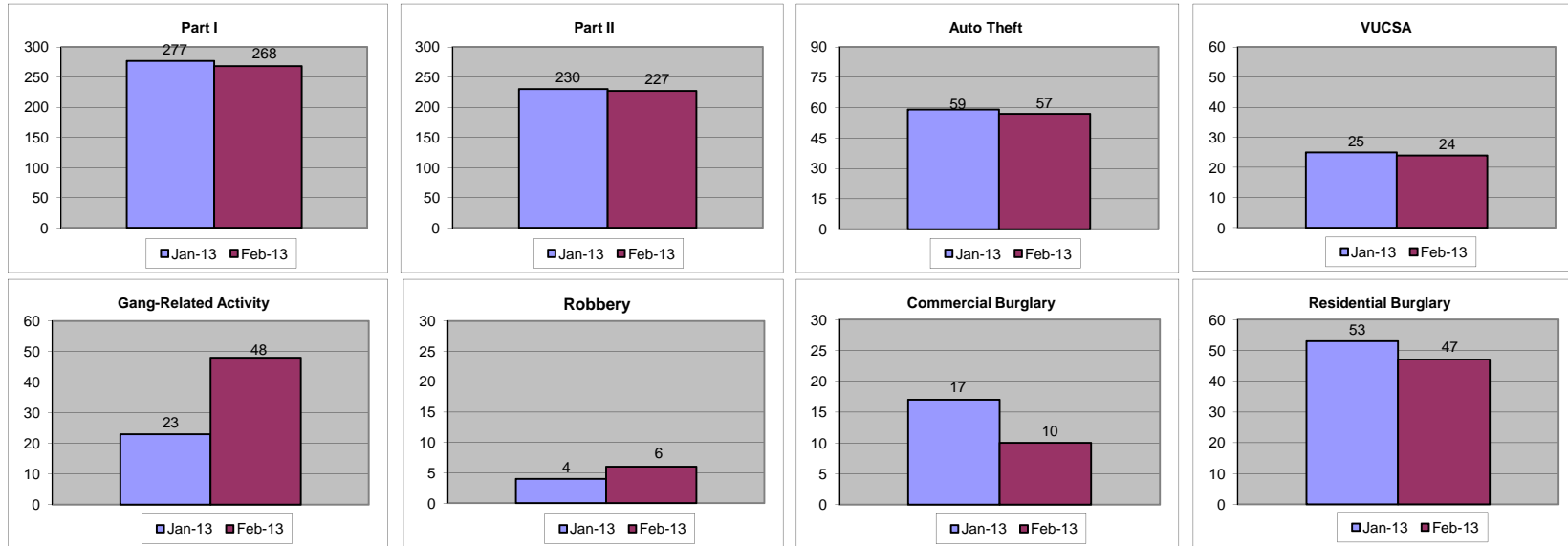
King County Sheriff's Office
Selected Activity Counts for Burien
Jan 2013 vs. Feb 2013*



	Part I			Part II			Auto Theft			VUCSA			Gang-Related Activity		
	Jan-13	Feb-13	% Chg	Jan-13	Feb-13	% Chg	Jan-13	Feb-13	% Chg	Jan-13	Feb-13	% Chg	Jan-13	Feb-13	% Chg
Burien	277	268	-3.2%	230	227	-1.3%	59	57	-3.4%	25	24	-4.0%	23	48	108.7%

	Robbery			Comm. Burglary			Res. Burglary		
	Jan-13	Feb-13	% Chg	Jan-13	Feb-13	% Chg	Jan-13	Feb-13	% Chg
Burien	4	6	50.0%	17	10	-41.2%	53	47	-11.3%

*Numbers are estimates based on CAD data.



Current Trends or Series:

Both Part I & Part II crimes decreased (3% & 1% respectively).

Gang-related activity more than doubled; 60% of increase due to tagging.

Commercial burglary down from 17 to 10 is & below the average since the April 2010 annexation (13).

Residential burglary decreased 11% but remains above the average since the April 2010 annexation (39). Three individuals were arrested in February 2013 (1 W/M/A, 1 W/F/A, 1 H/M teen). Two of these individuals (Christopher D. Brundage, W/M, 08/23/1969, & Virginia M. Ivey, W/F, 08/20/1983) are believed to be responsible for multiple shed burglaries in the city of Burien.

Auto theft decreased slightly but remains above the average since the April 2010 annexation (45).



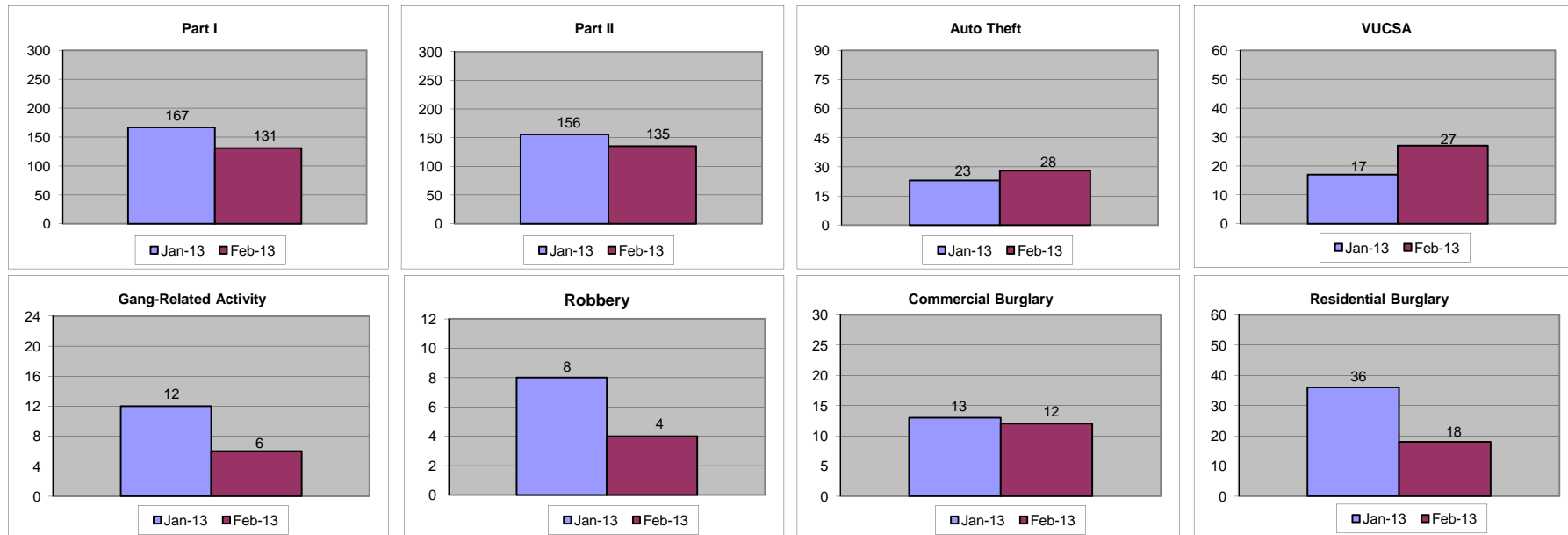
**King County Sheriff's Office
Selected Activity Counts for SeaTac
Jan 2013 vs. Feb 2013***



	Part I			Part II			Auto Theft			VUCSA			Gang-Related Activity		
	Jan-13	Feb-13	% Chg	Jan-13	Feb-13	% Chg	Jan-13	Feb-13	% Chg	Jan-13	Feb-13	% Chg	Jan-13	Feb-13	% Chg
SeaTac	167	131	-21.6%	156	135	-13.5%	23	28	21.7%	17	27	58.8%	12	6	-50.0%

	Robbery			Comm. Burglary			Res. Burglary		
	Jan-13	Feb-13	% Chg	Jan-13	Feb-13	% Chg	Jan-13	Feb-13	% Chg
SeaTac	8	4	-50.0%	13	12	-7.7%	36	18	-50.0%

*Numbers are estimates based on CAD data.



Current Trends or Series:

Both Part I & Part II crime decreased (22% & 14% respectively).

VUCSA incidents increased 59%. February 2013 has the highest monthly number since September 2008.

Residential burglary decreased 50% & is below the 8-year average (22).

Auto theft increased 22% but remains below the 8-year average (37).