



Growing Transit Communities Update

*SeaTac City Council
Study Session
February 26, 2013*



Overview

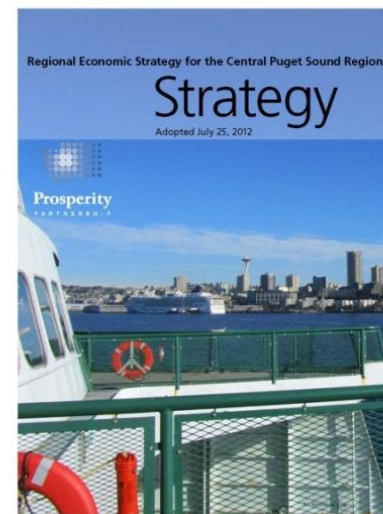
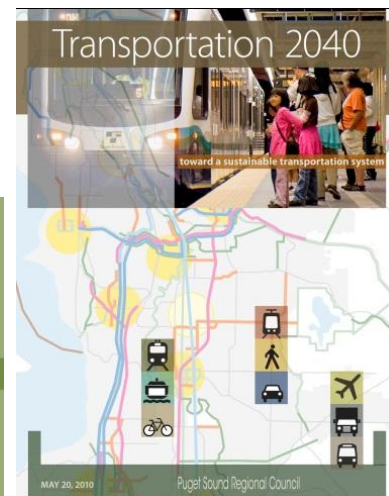
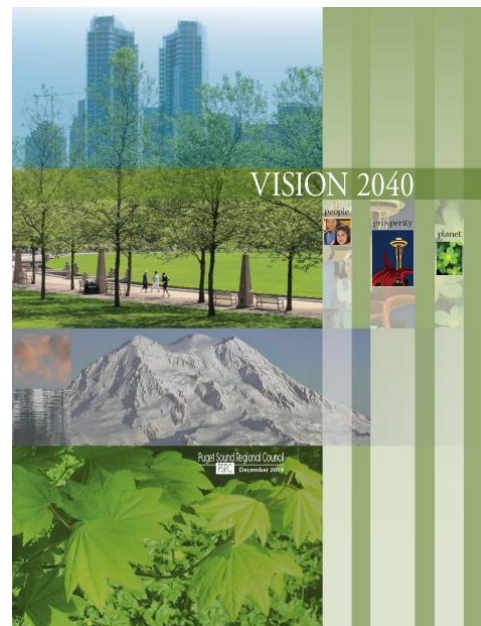
- Growing Transit Communities Partnership
- South Corridor Task Force
- Corridor Action Strategies
- Regional Compact
- Next Steps

Implementing Adopted Regional Plans

Three year effort funded by HUD's Partnership for Sustainable Communities

Core Challenge:

How to attract more of region's residential and employment growth in equitable transit communities as we implement \$15B in high-capacity transportation investments



Regional Consortium: A Big Tent

Cities

- City of Bellevue
- City of Everett
- City of Mountlake Terrace
- City of Redmond
- City of Seattle
- City of Shoreline
- City of Tacoma

Counties

- King County
- Pierce County
- Snohomish County

Transit Agencies

- Sound Transit
- King County Metro Transit
- Community Transit

Public Health & Human Services

- Public Health—Seattle & King County
- Snohomish County Human Services
- Tacoma-Pierce County Health Department

Public Housing Authorities

- King County Housing Authority
- Pierce County Housing Authority
- Seattle Housing Authority
- Snohomish County Housing Authority
- Tacoma Housing Authority

Funding Institutions

- Enterprise Community Partners
- Impact Capital (LISC)

Non-Profit Developers

- Bellwether Housing
- Capitol Hill Housing
- Community Development Collaborative

For-Profit Developers

- Urban Land Institute—Seattle District Council

Regional Groups

- A Regional Coalition for Housing
- Community Development Collaborative
- The Equity Partnership
- Puget Sound Regional Council
- Quality Growth Alliance

Educational Institutions

- North Seattle Community College
- UW-Runstad Center for Real Estate Studies

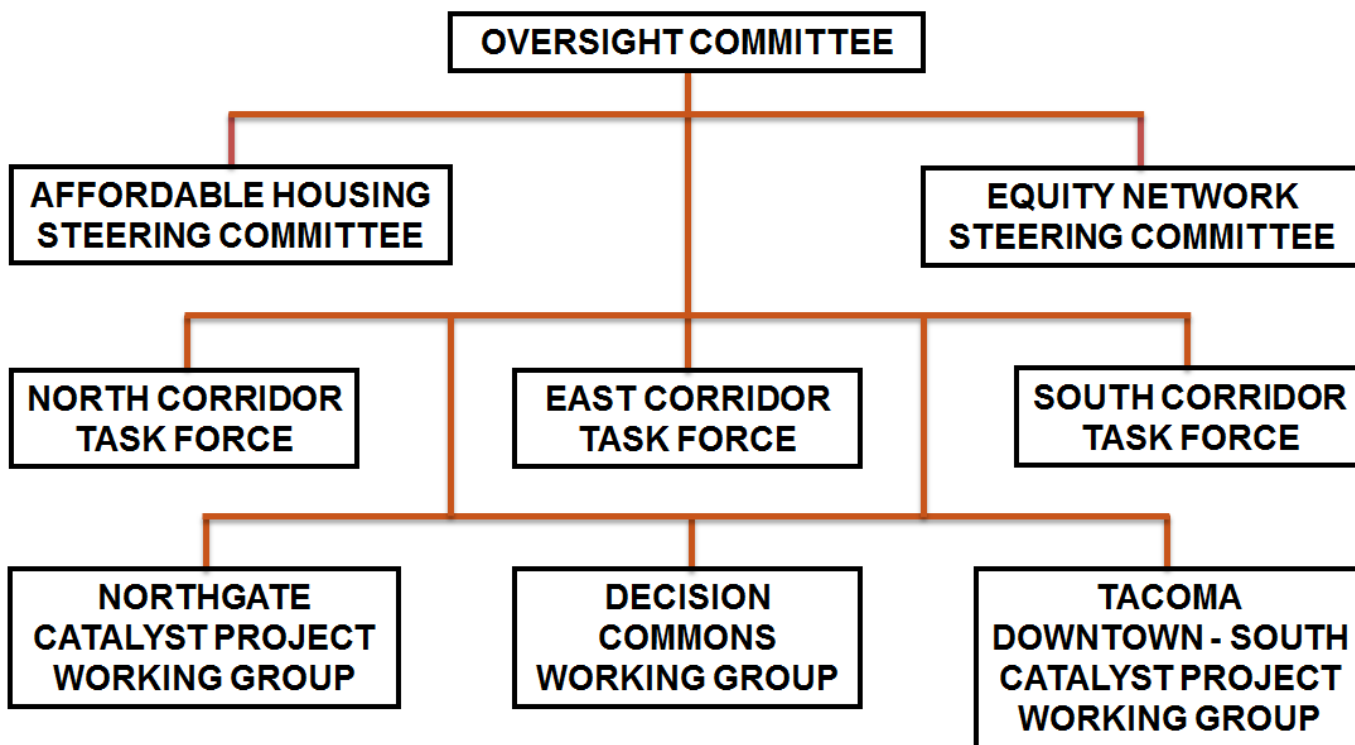
Environmental & Transportation Advocates

- Forterra (CLC)
- Futurewise
- Seattle Transit Blog

Housing & Community Advocates

- Affordable Housing Consortium of Tacoma-Pierce County
- Housing Consortium of Everett and Snohomish County
- Housing Development Consortium Seattle-King County
- Puget Sound SAGE
- Refugee and Immigrant Services Northwest
- Washington Low Income Housing Alliance

Organizational Framework



With input from:

Public engagement
PSRC committees
Other stakeholder groups
Consultant products

GTC Work Program

Corridor Action Strategies

- Attract growth near transit
- Provide housing choices
- Improve access to opportunity

Regional Equity Network

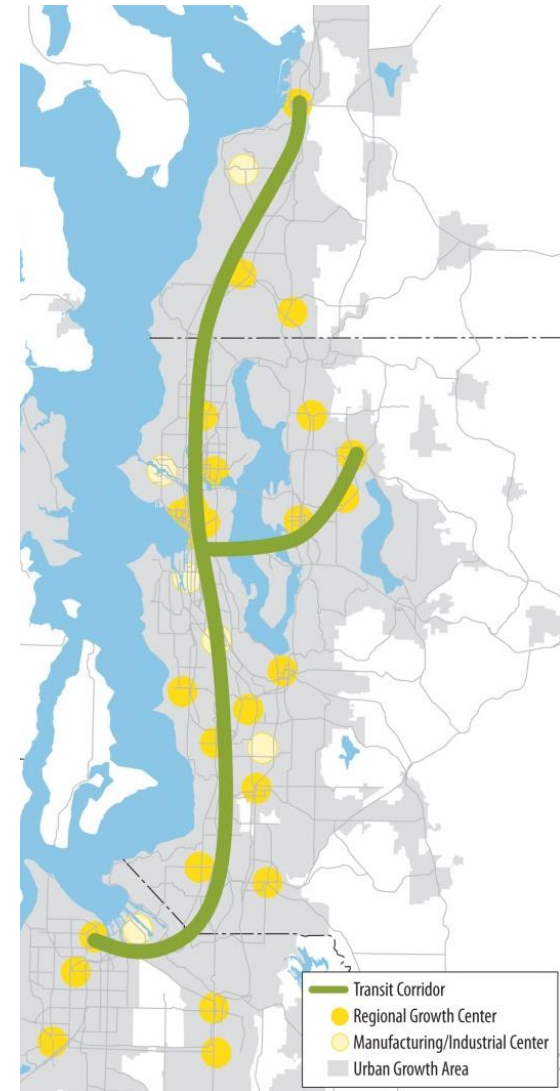
- Building capacity and engagement
- Regional coalition, local grants

Affordable Housing Strategy

- Financial tools, data, best practices

Demonstration Projects

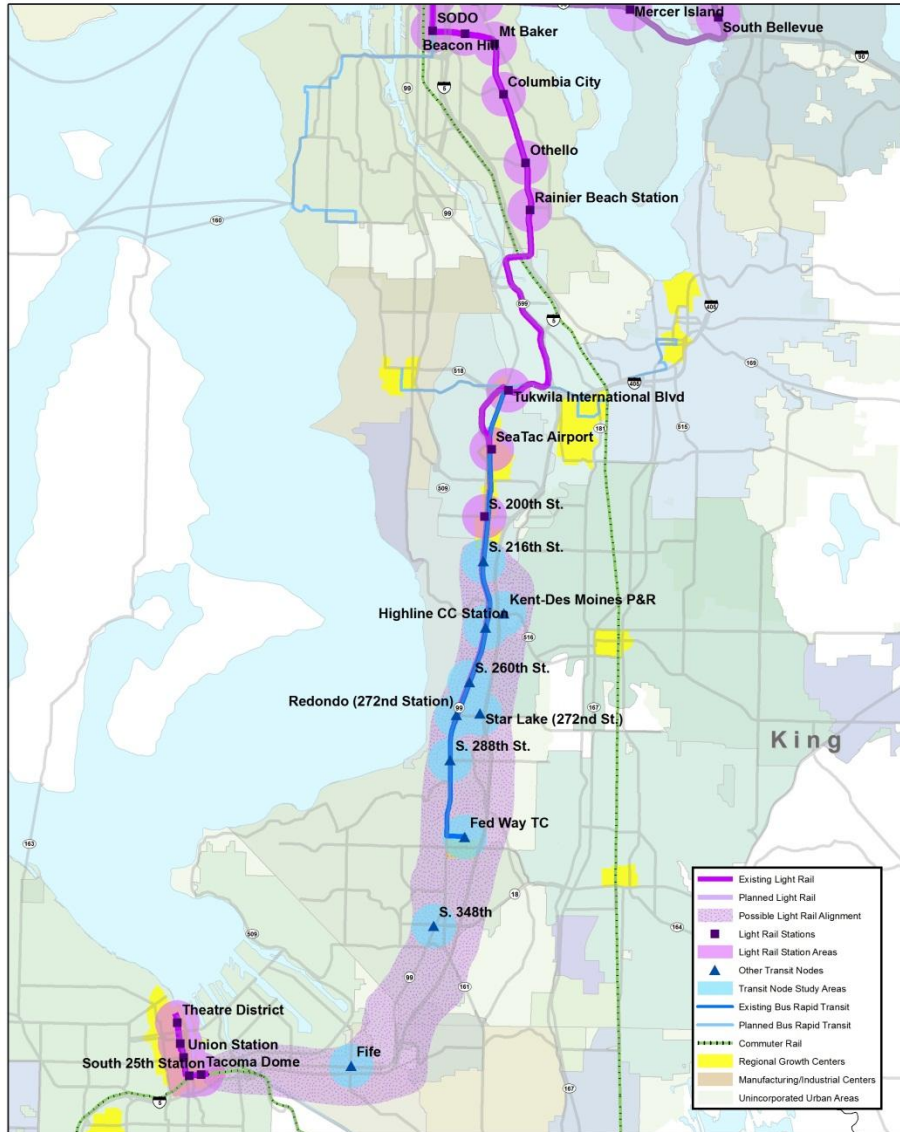
- Tacoma, Northgate, Bel-Red



South Corridor Study Areas



Growing Transit Communities Study Area Map



Growing Transit Communities Implementation

THE PLEDGE:
Regional Compact



THE PLAYBOOK:
Corridor Action Strategies



THE PLANS:
Local Implementation Agreements

- Concise high-level document with vision and goals for equitable transit communities in central Puget Sound region
- Signed by Consortium Members and other local and regional partners
- Final document detailing 24 action areas and a transit community typology to guide implementation
- Appendices with transit community profiles and other implementation resources
- Workplans developed with each partner that specifies near- and medium-term implementation steps that will be taken by the jurisdiction or organization

Regional Transit Communities Compact

Voluntary Agreement for 2013 and Beyond

- Statement of common goals
- Build on work to date
- Address regional challenges:
 - Housing and jobs
 - Affordability
 - Opportunity
- Regional partnership for equitable transit communities

Draft Regional Compact Language – Wednesday, January 9, 2013

Growing Transit Communities Compact

Whereas the central Puget Sound region has adopted VISION 2040, a long-range strategy to advance the ideals of our people, our prosperity and our planet by integrating land use, economic and transportation decisions in order to meet the needs of current and future generations, achieve economic prosperity with social equity, and support a healthy environment, including addressing global climate change; and

Whereas VISION 2040 includes among its goals (1) focusing growth within already urbanized areas to create walkable, compact, and transit oriented communities and (2) meeting housing needs through preservation and expansion of a range of affordable, healthy and safe housing choices; and

Whereas the central Puget Sound region is making a \$15+ billion investment in high-capacity transit that creates a once in a lifetime opportunity to plan for and support the growth of communities near transit; and

Whereas the central Puget Sound region is expected to add 1.3 million people and 1.1 million jobs by the year 2040; and

Whereas approximately 45% of households currently residing in transit communities are moderately or severely housing cost burdened; and

Whereas the combined cost burden of housing plus transportation can be substantially reduced by locating affordable housing opportunities within transit communities; and

Whereas the report "Equity, Opportunity, and Sustainability in the Central Puget Sound Region" identifies a widespread pattern within the region of unequal household access to educational, economic, transportation, environmental health, and neighborhood resources; and

Whereas transit-oriented development is a land use pattern with many social, economic, and environmental benefits, including more sustainable and efficient use of urban land, reduced combined housing and transportation costs per household, and improved access and mobility for residents; and

Whereas many communities that are now or may be served by high capacity transit are home to low-income and minority households and small locally- and minority-owned businesses that are at a potentially higher risk of displacement; and

Whereas the Growing Transit Communities Partnership was formed as a diverse coalition of governmental and nongovernmental partners that was funded by a grant from the federal Partnership for Sustainable Communities for the express purpose of leveraging regional transit investments to create equitable transit communities around light rail and other high capacity transit stations; and

Whereas the Partnership defines equitable transit communities as follows:

Corridor Action Strategies: *Final Report Structure*

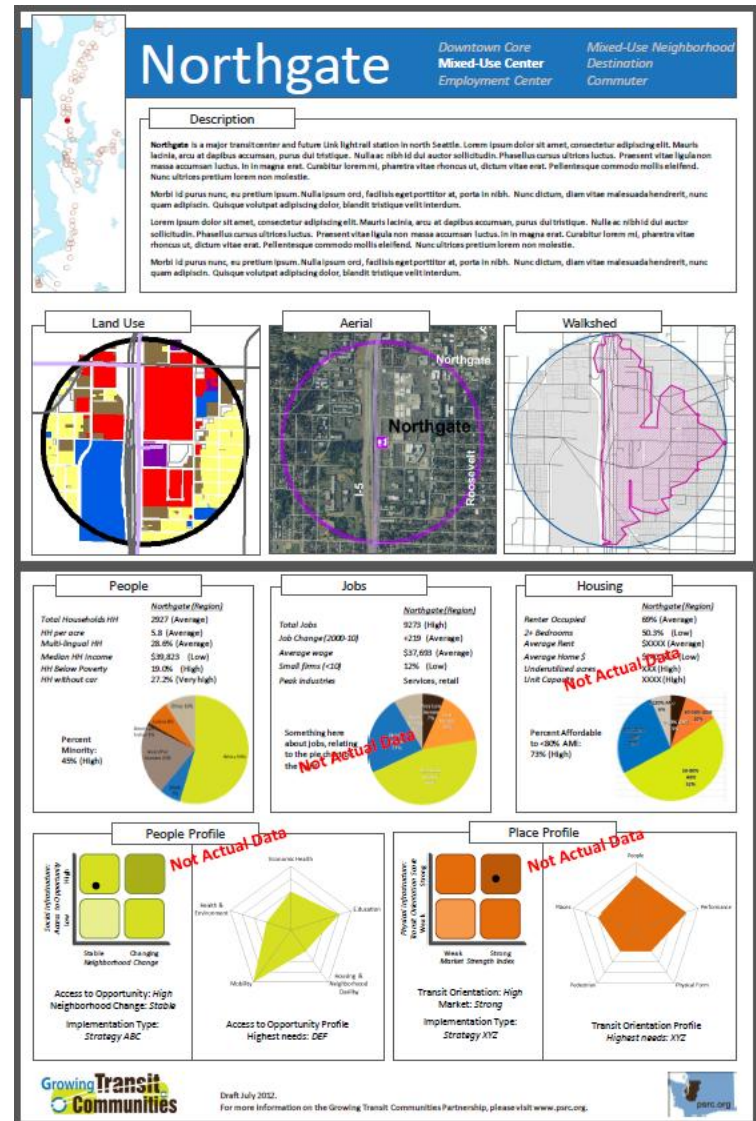
74 Transit Community Profiles

24 Strategies

Implementation Actions for:

- PSRC
- Transit agencies
- Local governments
- Private and community based partners

Different Approaches matched to Different Community Types



What's in it for Local Government?



Next Steps



Corridor Action Strategies

- February to March: Task force process
- April: Draft to Oversight Committee
- May: Public comment period
- Summer 2013: Final action on CAS

Implementation

- GTC compact: Broad goals for transit communities
- Action plans: Regional and local, near- to mid-term
- July to December 2013



For More Information

Michael Hubner, Senior Planner

mhubner@psrc.org (206) 971-3289



Project Website

<http://www.psrc.org/growth/growing-transit-communities>

Extra Slides

Regional Partners: Distinct Roles & Tools

PSRC

Regional policies and programs
Local plan review
Transportation project funding
Technical assistance and coordination

Transit Agencies

Service planning and provision
Facility development
Partnerships for TOD

Local Jurisdictions

Comprehensive & subarea plans
Development regulations
Capital facilities investments
Community engagement

Other Agencies and Stakeholders

Non-profit organizations
Private sector
Public health, education, etc.
Community groups

Corridor Action Strategies: *Process & Products*



Data Collection and Analysis
Fall 2011 – Summer 2012

Generate and Refine
Recommendations
Summer 2012 – Spring 2013

Products:

- ✓ Kirwan Institute Opportunity Mapping
- ✓ Strategic Economics Market Analysis
- ✓ PRR Private Sector Engagement
- ✓ GTC Existing Conditions Report
- ✓ Equity Grant Program
- ✓ ULI Technical Assistance Panel Report

Products:

- ✓ CTOD Best Practices Case Studies Report
- ✓ GTC Value Capture Report and Proposal
- ✓ GTC TOD Fund White Paper
- ✓ GTC Surplus and Underutilized Properties
 - GTC Land Capacity Analysis
 - CTOD Barriers, Typology and Actions Report
 - **GTC Corridor Action Strategies**

Draft Corridor Action Strategies

Goal: Attract more of the region's residential and employment growth near high-capacity transit.

- Station area planning
- Transit supportive densities and uses
- Innovative parking tools
- Surplus lands / Land assembly
- Infrastructure investments
- Complete streets
- Financing tools
- Transit alignments / stations

Draft Corridor Action Strategies

Goal: Provide housing choices affordable to a full range of incomes near high capacity transit.

- Housing needs assessment / targets
- Fair housing legislation
- Surplus public lands
- Property acquisition fund
- Targeted housing investments
- Value capture techniques
- Incentive zoning
- Inclusionary zoning
- Preservation
- MFTE

Draft Corridor Action Strategies

Goal: Increase access to opportunity for existing and future members of transit communities.

- Community needs assessment
- Targeted investments and services
- Equitable access to education
- Mobility for transit dependent populations
- Small business supports
- Access to employment
- Public involvement process
- Outreach and capacity building
- Coalition building