





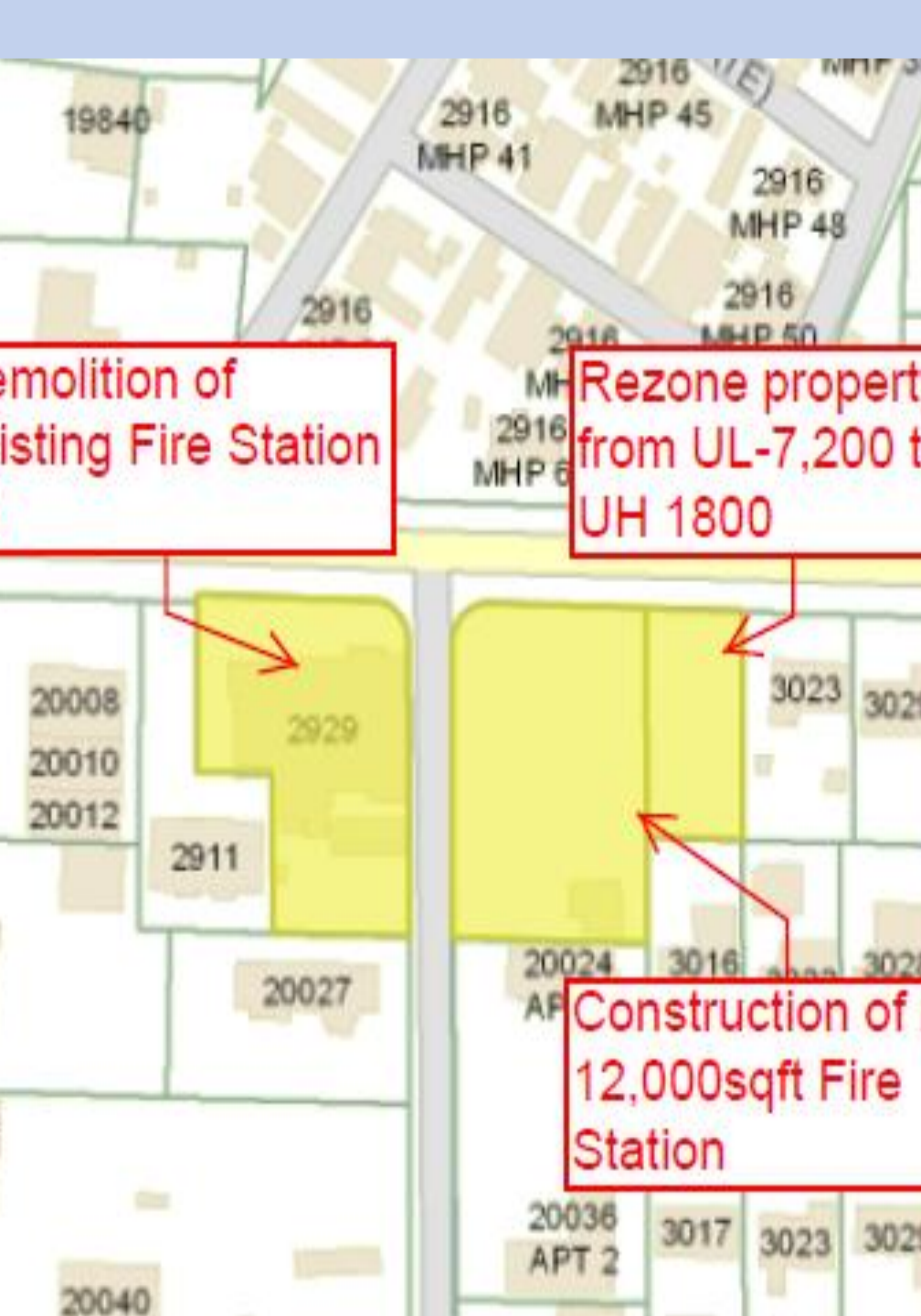
© 2012 Google



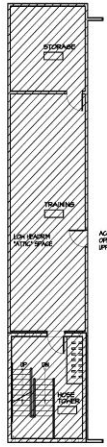
Demolition of
Existing Fire Station

Rezone property
from UL-7,200 to
UH 1800

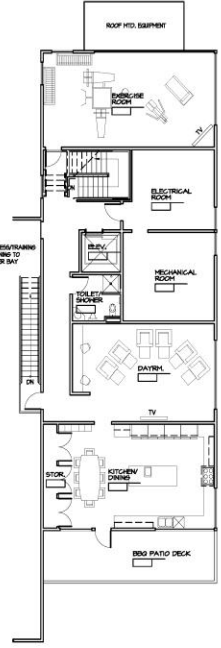
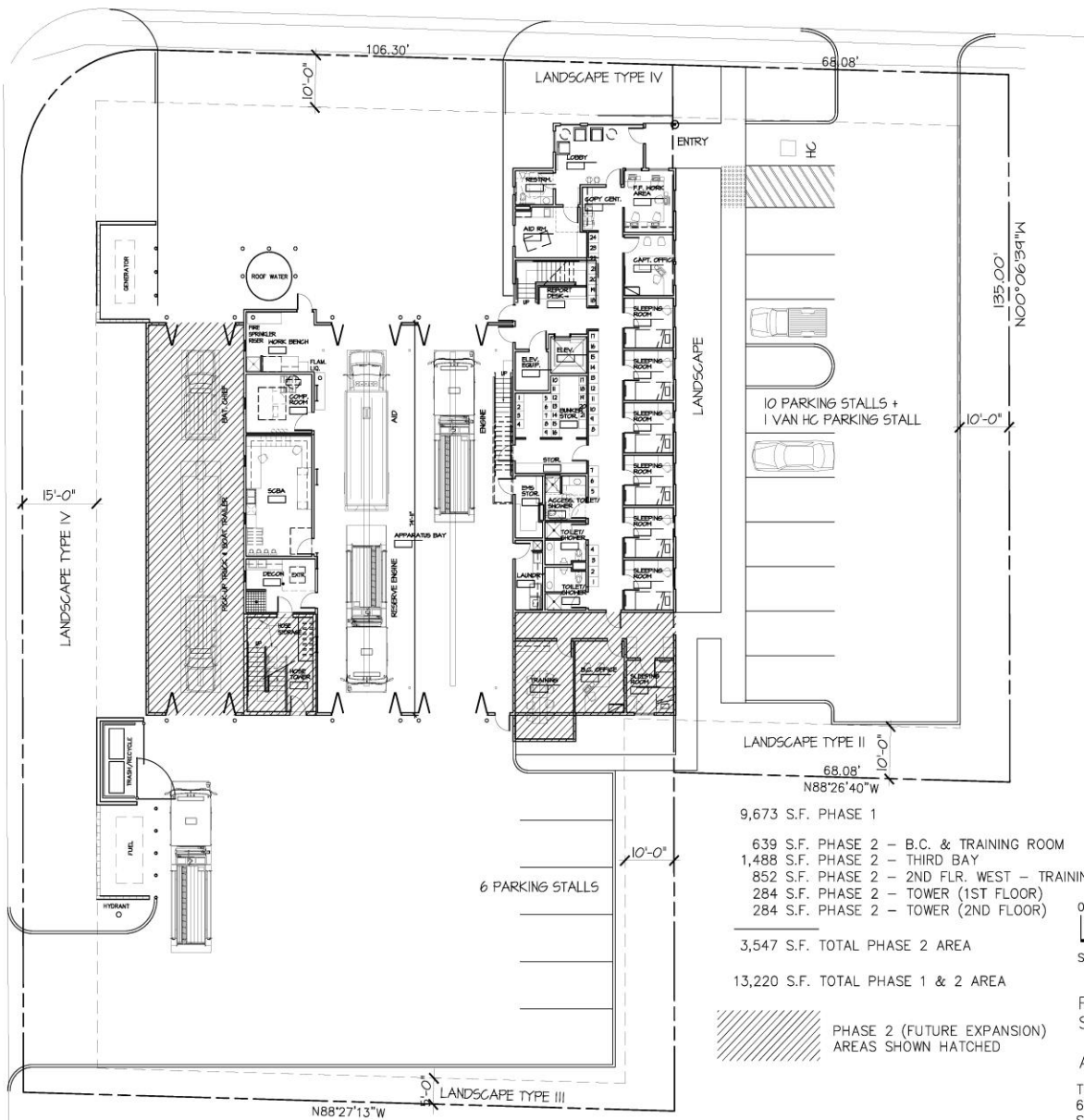
Construction of
12,000sqft Fire
Station



30TH AVE S



SECOND FLOOR PLAN WEST SIDE



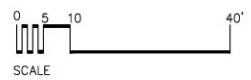
SECOND FLOOR PLAN EAST SIDE

- 9,673 S.F. PHASE 1
- 639 S.F. PHASE 2 - B.C. & TRAINING ROOM
- 1,488 S.F. PHASE 2 - THIRD BAY
- 852 S.F. PHASE 2 - 2ND FLR. WEST - TRAINING/STORAGE
- 284 S.F. PHASE 2 - TOWER (1ST FLOOR)
- 284 S.F. PHASE 2 - TOWER (2ND FLOOR)

3,547 S.F. TOTAL PHASE 2 AREA

13,220 S.F. TOTAL PHASE 1 & 2 AREA

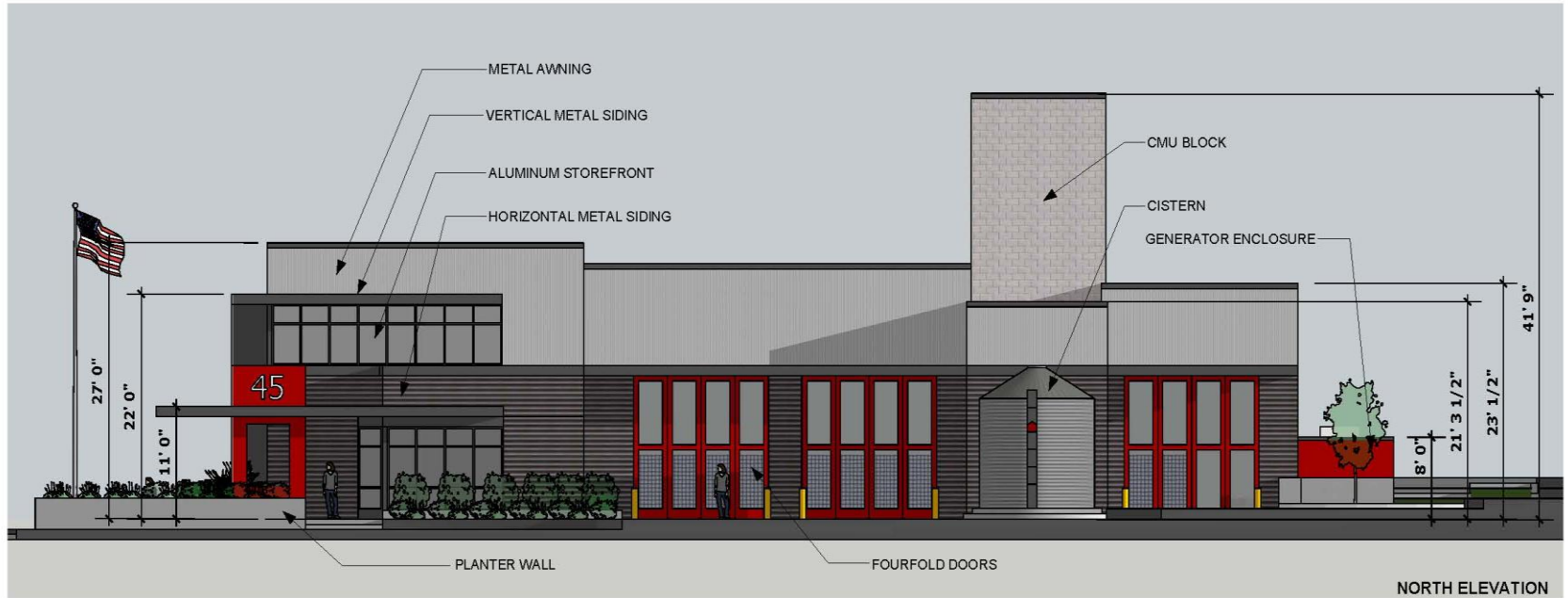
PHASE 2 (FUTURE EXPANSION) AREAS SHOWN HATCHED



FIRE STATION 45
SeaTac, WA

April 26, 2012

TCA Architecture - Planning
6211 Roosevelt Way NE
Seattle, WA 98115





FULL BUILD OUT - NORTHEAST VIEW



FULL BUILD OUT - SOUTHEAST VIEW



FULL BUILD OUT - SOUTHWEST VIEW



FULL BUILDING OUT - NORTHWEST VIEW

Fire Station 45

SeaTac Fire Department

Estimate 2bay station, with hose tower & 4fold doors

23-May-12

Revised

18-Jun-12

Summary

Revised

10-Nov-12

Construction Costs

Cost/sf

Station 45	324	10,241	\$3,320,220
------------	-----	--------	-------------

Related (Soft) Costs

A/E			\$371,478
-----	--	--	-----------

WSST	9.5%	3,320,220	\$315,421
------	------	-----------	-----------

Advertising, Bidding Costs			\$2,500
----------------------------	--	--	---------

Printing, Reimbursables			\$5,000
-------------------------	--	--	---------

Utility connections			\$40,000
---------------------	--	--	----------

Testing & Inspections			\$10,000
-----------------------	--	--	----------

Permits			\$0
---------	--	--	-----

Survey			\$3,000
--------	--	--	---------

Furniture, fixtures and equipment			\$33,208
-----------------------------------	--	--	----------

Soils Engineering			\$3,500
-------------------	--	--	---------

Air Balancing			\$8,000
---------------	--	--	---------

Contingency	10.0%	3,320,220	\$332,022
-------------	-------	-----------	-----------

Estimated Total Costs

\$4,444,348