

Connecting 28th/24th Avenue South

SeaTac City Council
Oct. 23, 2012



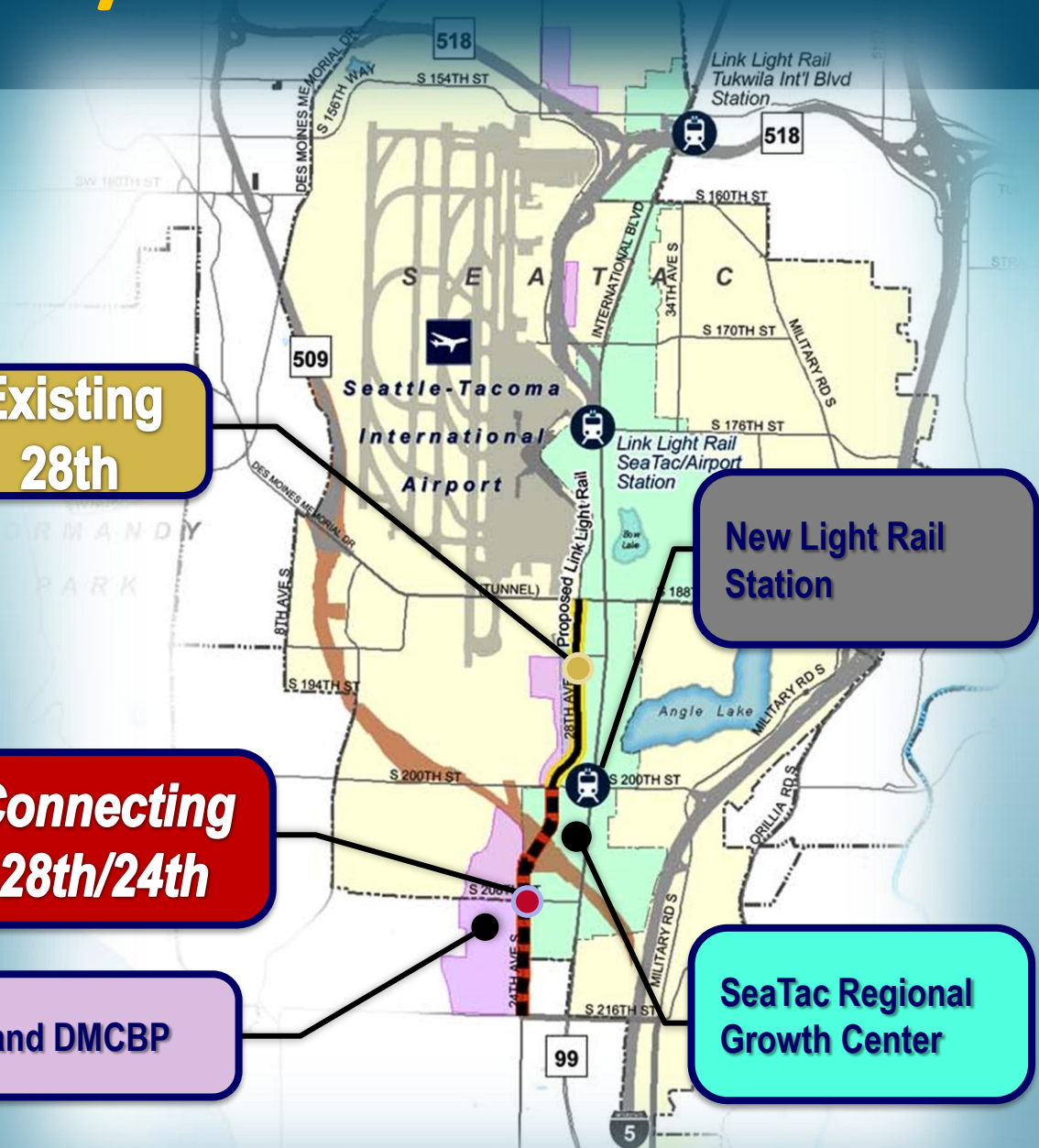
Existing
28th

Connecting
28th/24th

NEST and DMCBP

New Light Rail
Station

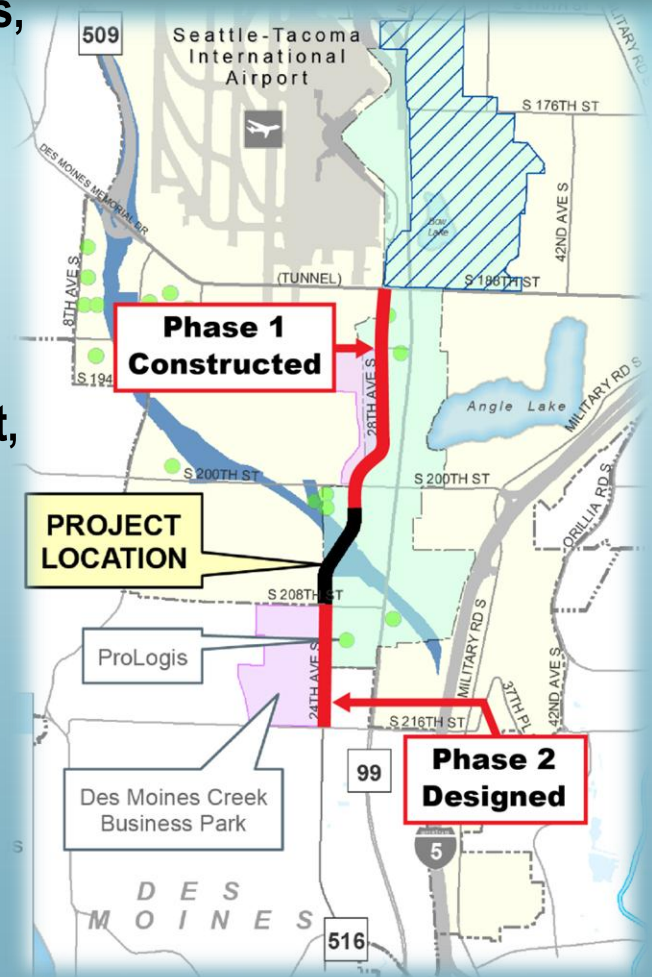
SeaTac Regional
Growth Center



Corridor Benefits

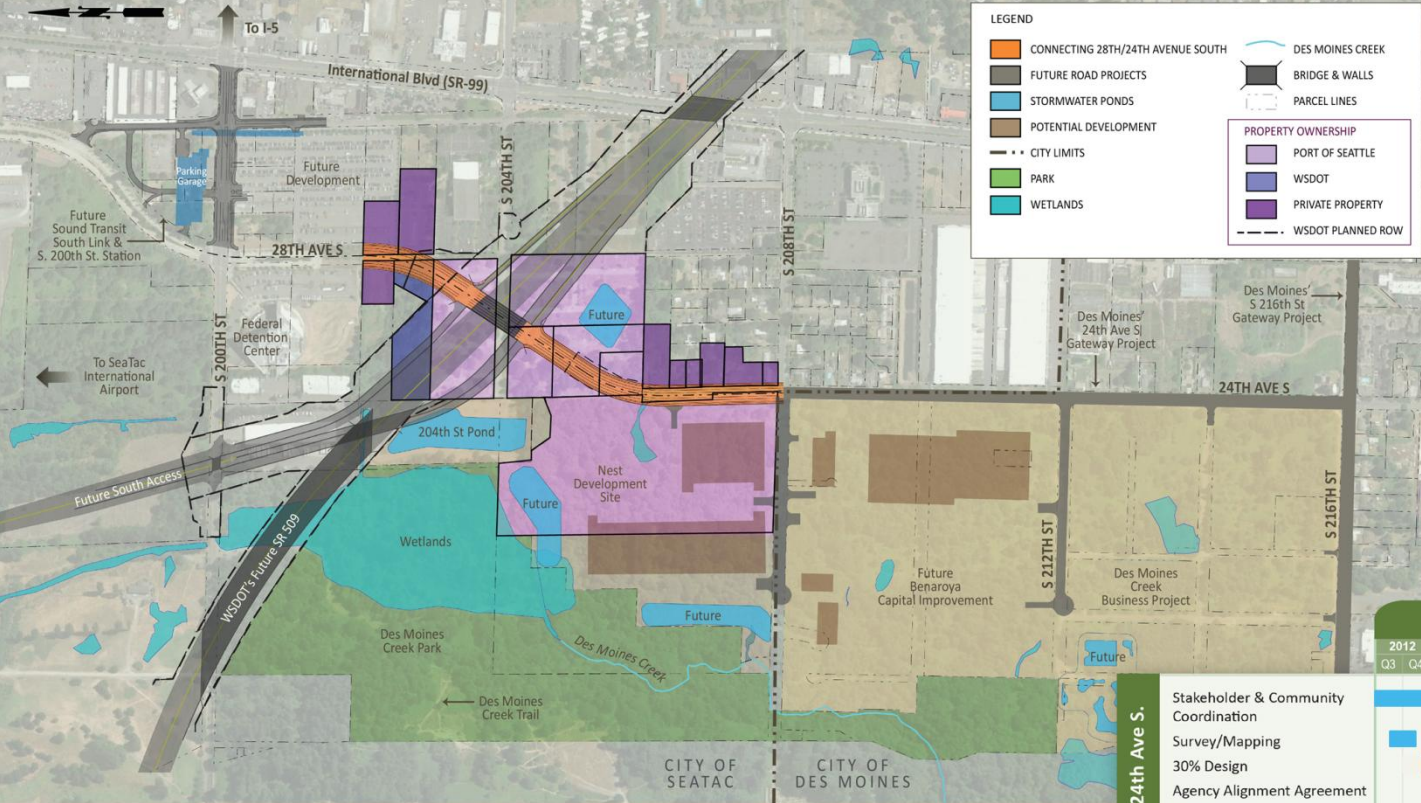


- Completes 5-lane arterial w/ bike lanes, sidewalks
- Reduces travel time: bypass SR 99 congestion
- Creates connection to Sea-Tac Airport, future SR 509
- Drives growth and economic development
 - 200 Acres
 - >1.3m SF Logistics/Warehouse/Industrial
 - >4.3m SF Office/Retail
 - >12k Family wage jobs



Our Approach to Key Issues Means Forward Compatible Construction Complete in 2016

ISSUES MAP



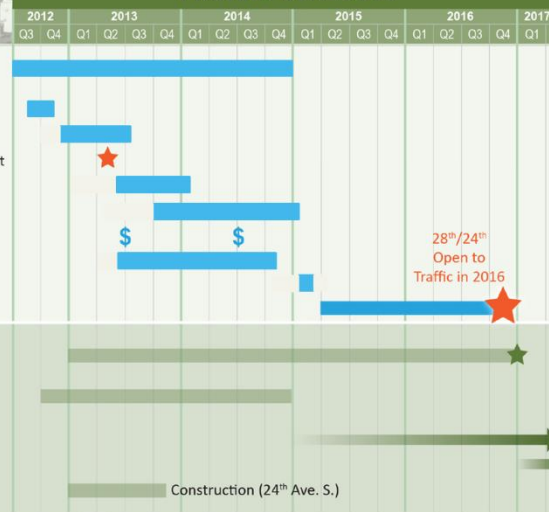
KEY ISSUES

- Agency Coordination**
- Forward compatibility with SR 509
 - Phasing and implementation of projects
 - Identify and leverage sharing opportunities
- Design**
- Structures and earthwork construction phasing
 - Property access and circulation
 - Refinements to optimize design and cost
 - Stormwater facilities
- Environmental**
- Wetlands
 - Cultural
 - SR 509 EIS coordination
- ROW Acquisition**
- WSDOT/Port of Seattle land exchange
 - Air space lease
 - Private property
 - Limited access for SR 509

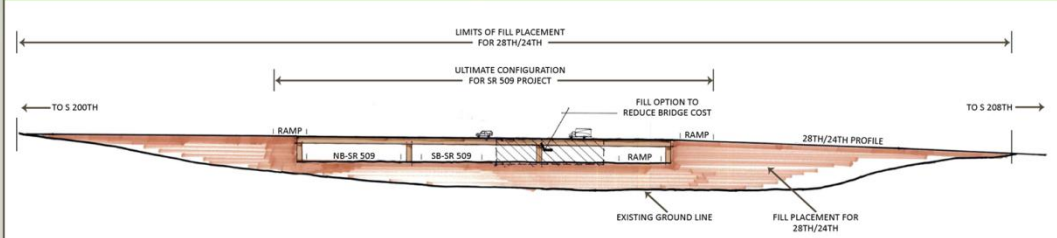
ROADWAY SECTION



PROJECT SCHEDULE



28TH/24TH PROFILE



SeaTac 28th/24th Ave S.

Other Concurrent Projects

The Challenge...

- **Schedule: Complete Spring 2017**
- **Cost: \$20.2m**
- **Forward Compatible with SR 509**
- **Drive Development: Access & Utilities**

Met by...

- ✓ **Creating Partnerships**
- ✓ **Asking Stakeholders**
- ✓ **Informing Public**
- ✓ **Sustaining Council's Support**

