

# SeaTac City Council Briefing

## October 23, 2012

### South 200<sup>th</sup> Link Extension



# South 200<sup>th</sup> Link Extension

- 1.6 miles of elevated guideway
- Elevated station spanning South 200th Street
- Park and ride facility
  - 700 stalls for the final configuration
  - up to 1,100 stalls as the interim terminus
- Roadway and non-motorized improvements



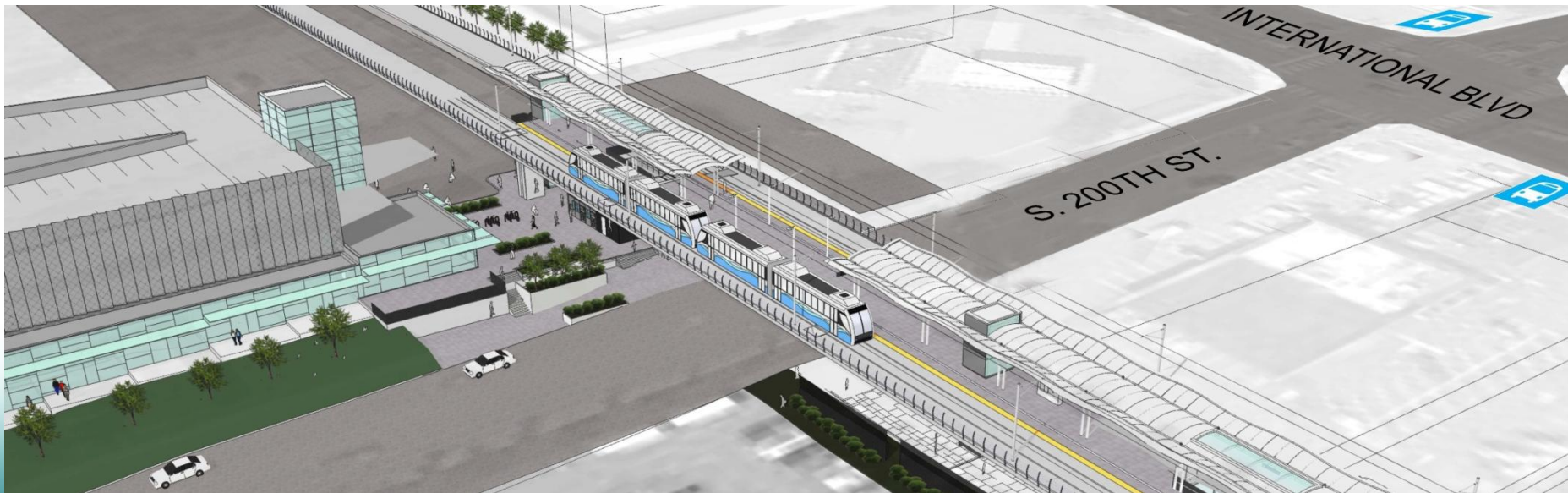
# Guideway and Station

- PCL Civil Constructors Inc, teamed with HDR Engineering, Inc, has been selected to design and build the guideway and station
- Sound Transit has worked successfully with both firms
- Notice to Proceed issued to PCL on October 15, 2012
- Construction activities scheduled to begin in early 2013



# Park & Ride Facility

- Goal: provide required parking and maximize development opportunities in the station area
- Now evaluating procurement method: decision Dec 2012
- Develop contract, select contractor: Jan 2013--March 2014
- Construction activities scheduled to begin in late 2014

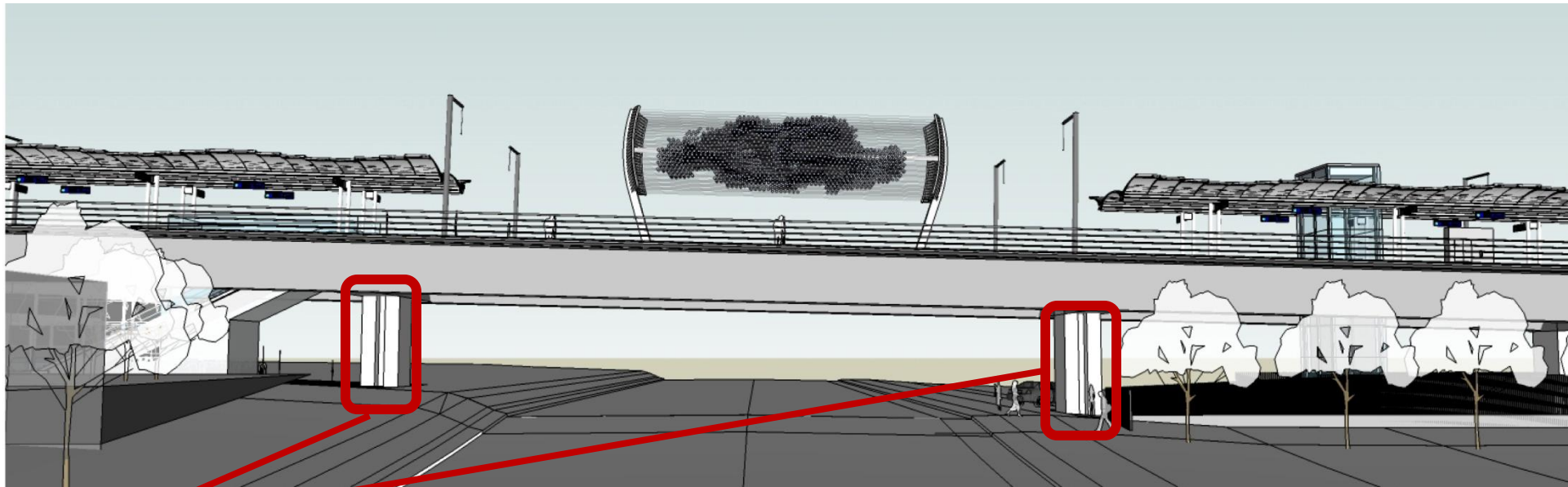


# Project Schedule

South 200th Link Extension					
Activity	Year				
	2012	2013	2014	2015	2016
<b>Guideway/Station Contract</b>					
Procure D/B Team	■				
Design & Construction		■	■	■	■
Testing & Commissioning					■
<b>Park &amp; Ride Facility Contract</b>					
Procure Contract Team		■			
Design & Construction			■	■	■
Testing & Commissioning					■
<b>Start of Service</b>					■

# S. 200<sup>th</sup>: *Cloud Artist* – Laura Haddad

## Design Development on platform sculpture continues



Possible sites of the  
*Rain Drain* artwork.

Design on second  
art project just  
getting underway.



# S. 200<sup>th</sup>: *Rain Drain Artist* – Jill Anholt

Community members and city staff on selection panel



Art Project potential site

# QUESTIONS