

South Link Briefing City of SeaTac May 8, 2012



Today's Presentation

- Introduction: Miles Haupt, Sound Transit Project Director
- Project Status
- Design Build Procurement
- Agreements
 - City of SeaTac
 - Port of Seattle
 - Public/Private Utilities
- Approach to Parking
- Community Outreach



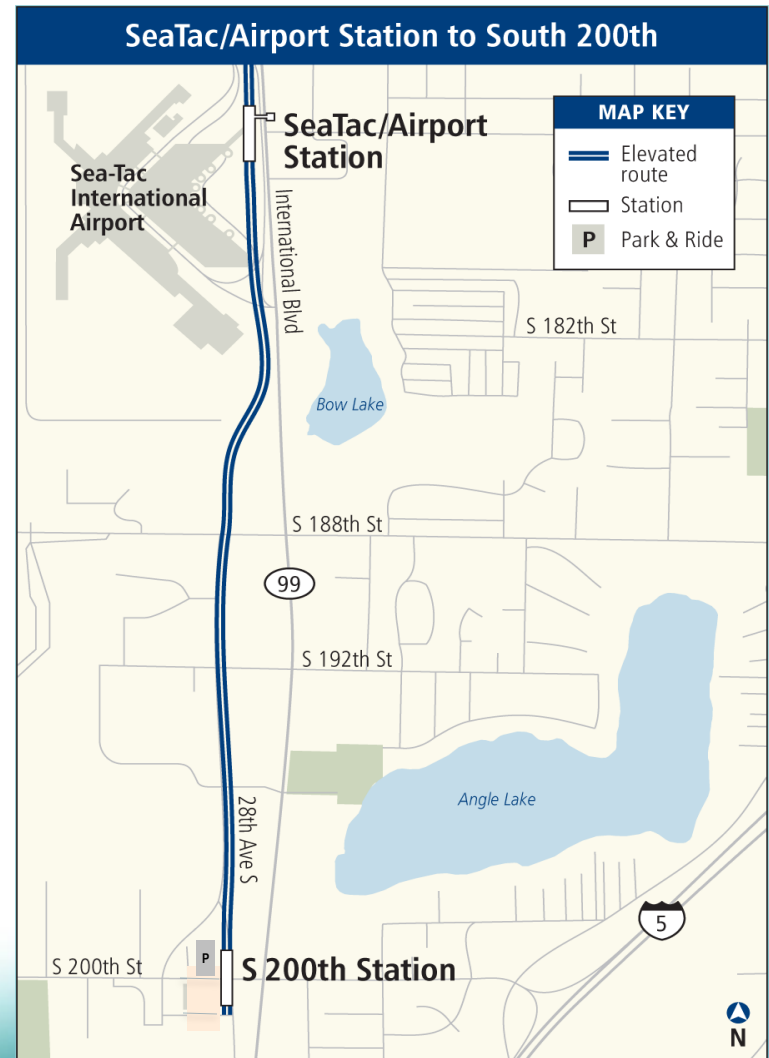
South Link – SeaTac/Airport Station to South 200th

Project Description

- 1.6 miles
- Elevated station
- Park-and-ride Transit facility
- Secured bicycle parking
- Improved pedestrian and bicycle connections in the station vicinity

Stakeholders

- The community - residents and businesses
- Current and future riders
- U.S. DOT / FTA
- Port of Seattle
- City of SeaTac
- Public/Private Utilities
- Potential TOD interests



Schedule

- ✓ SEPA/NEPA Approval **June 2011**
- ✓ Sound Transit Board approved South Link Project **July 2011**
- ✓ Design-Build Procurement began **Fall 2011**
- ✓ Right of Way Acquisitions began **Fall 2011**
- ✓ Awarded \$10 million TIGER III Grant **December 2011**
- City of SeaTac / Port of Seattle Project Approvals **Spring 2012**
- Advance Utility Relocation **Summer 2012**
- Award Design-Build Contract (Guideway & Station) **Fall 2012**
- Begin Major Construction Activities **Early 2013**
- Light Rail Service Begins **Fall 2016**

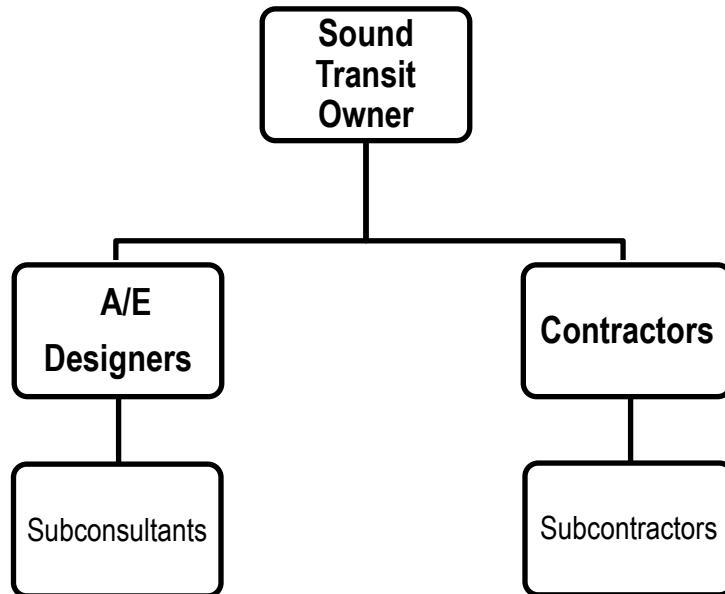
Design-Build Procurement (Guideway and Station)

- ✓ Capital Projects Advisory Review Board (CPARB) Approval **July 2010**
- ✓ Baseline scope, schedule & budget based on D/B delivery **July 2011**
- ✓ Request for Qualifications **October 2011**
- ✓ Issued the Request for Proposals **March 2012**
- Proposals Due **June 2012**
- Contract Award for Design Build **Fall 2012**
- Begin Construction **Early 2013**

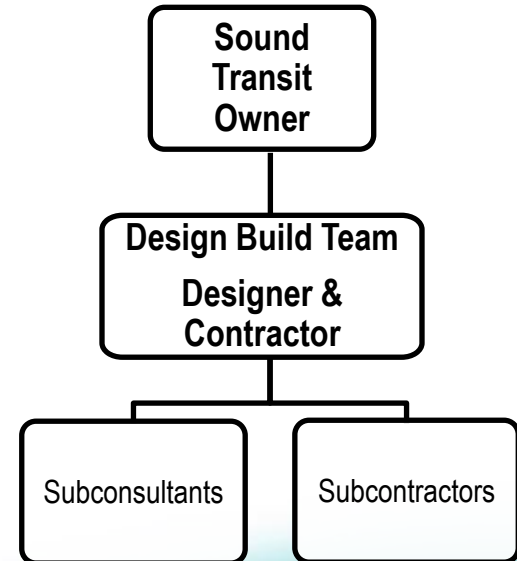


Project Delivery Models

Design-Bid-Build



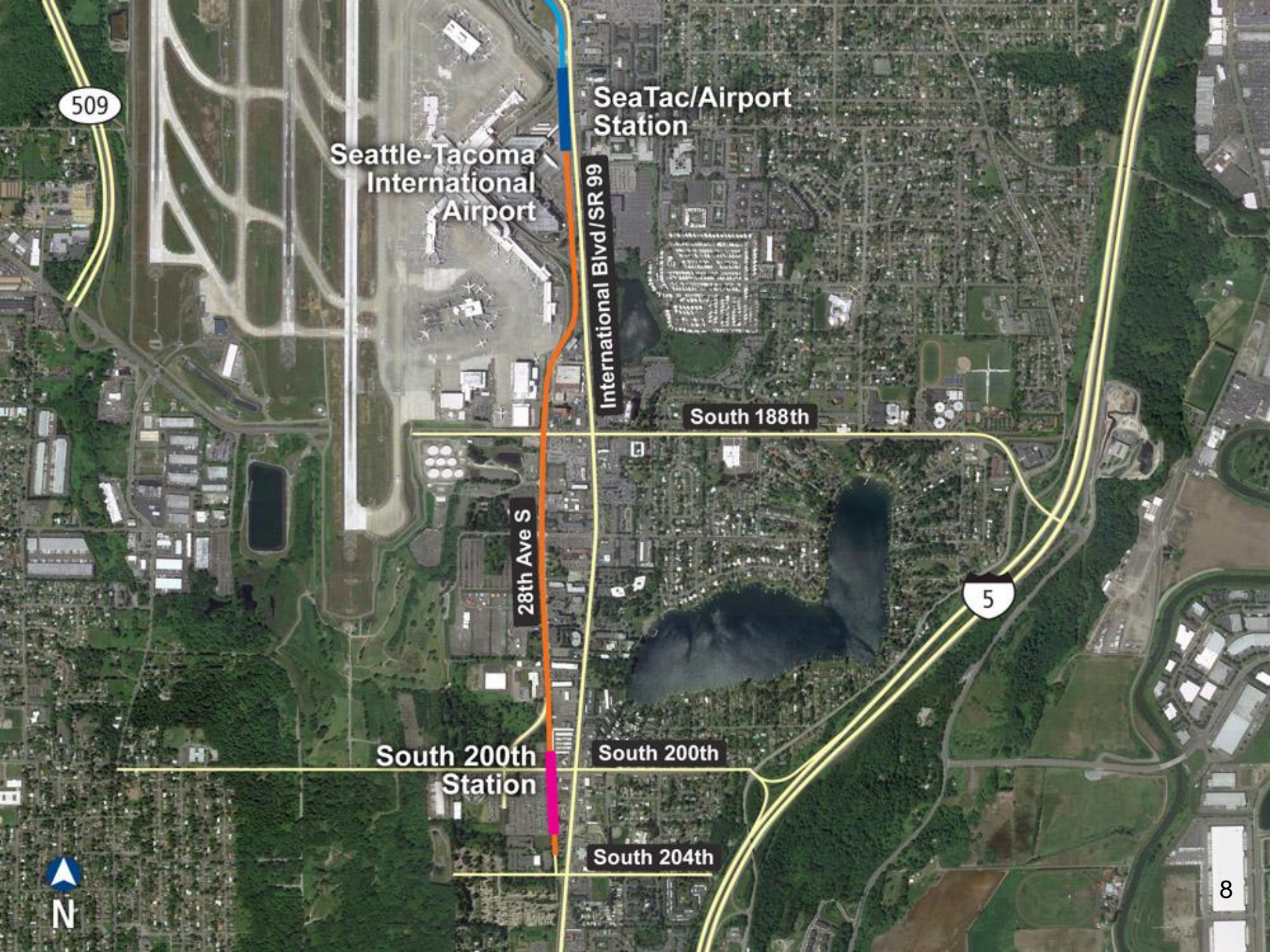
Design-Build



Third Party Agreements

- City of SeaTac
 - Development Agreement
- Port of Seattle
 - Memorandum of Agreement
 - Advanced Utility Agreement
- Private Utility Agreements
 - Puget Sound Energy
 - Century Link
 - Midway Sewer
 - Highline Water
 - Olympic Pipeline





509

Seattle-Tacoma
International
Airport

SeaTac/Airport
Station

International Blvd/SR 99

South 188th

28th Ave S

5

South 200th
Station

South 200th

South 204th



South 200th Station Area Site Plan



South 200th Station Aerial View



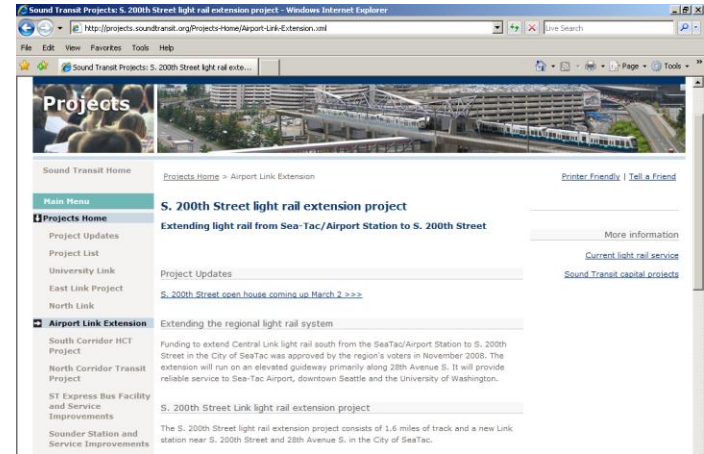
Parking Approach

- Provide 1050 stalls; at least 700 will be in structure
- Configured to maximize future development potential of station site
- Potential to lease or locate up to 350 surface stalls near station until extension south of S. 200th occurs



Community Outreach Update

- Open Houses
 - ✓ March 2, 2011
 - ✓ October 5, 2011
 - Early June 2012
-
- Typical outreach activities
(fact sheets, e-mails, letters, newsletters, website, social media, etc.)



Upcoming Board Actions

MOA with Port of Seattle

May 24, 2012

City of SeaTac Development &
Transitway Agreement

June 28, 2012

South Link Project Management
Services

August 2012

South Link Guideway/
Station Design /Build

Fall 2012

Port of Seattle and SeaTac City Council Committee Actions

- Port Commission Approves MOA **May 22, 2012**
- SeaTac City Council Approves DA **June 26, 2012**

QUESTIONS