

# PARKS, RECREATION, AND OPEN SPACE ELEMENT

## Table of Contents

**INTRODUCTION**..... X

[SeaTac’s Vision for Parks, Recreation, and Open Space](#)..... X

[Purpose of Element](#)..... X

[Role in State, Regional, and County Planning Framework](#)..... X

Relationship to the Parks, Recreation, and Open Space Plan..... ~~X~~<sup>3</sup>

[Consistency with Other Elements](#)..... X

~~**MAJOR CONDITIONS**..... 4~~

**GOALS AND POLICIES** ..... X

GOAL ~~10.8.1~~ ..... X

GOAL ~~10.8.2~~ ..... X

GOAL ~~10.8.3~~ ..... X

GOAL ~~10.8.4~~ ..... X

GOAL ~~10.8.5~~ ..... X

GOAL ~~10.8.6~~ ..... X

GOAL ~~10.8.7~~ ..... X

**RECOMMENDED IMPLEMENTATION STRATEGIES** ..... X

Parks, Recreation, and Open Space Element

**Maps**

Map [10-8.1](#).Parks and Recreational Facilities.....

Map [10-8.2](#).Gap and Opportunity Map - North.....

Map [10-8.3](#).Gap and Opportunity Map - Central.....

Map [10-8.4](#) Gap and Opportunity Map - South.....

## INTRODUCTION

### SeaTac’s Vision Parks, Recreation, and Open Space

*In 2044, SeaTac will provide well-maintained parks, recreation, and open spaces that are welcoming and available to all people in the community for health, fun, and community building.*

*In 2044, neighborhood parks will be in walking distance of all residents. People will celebrate, exercise, or relax in parks, trails, community centers, or other facilities throughout the city. Facilities will support users of all ages and abilities.*

*In 2044, new village squares will provide central gathering places within the Urban Center’s three Urban Villages and also in Neighborhood Villages serving residential neighborhoods. These flexible, multi-purpose spaces will provide opportunities for communities to share recreational and cultural experiences and will help make SeaTac a great place to live, work, and play.*

### Purpose of Element

This Element addresses the present and future park, recreation, and open space needs of those living and working in SeaTac.

~~*This Element addresses the stewardship of SeaTac’s environmental assets and guides the development and implementation of environmental policies and regulations.*~~

~~*This Element provides policies to maintain key natural processes and functions that provide the natural physical foundation for the community, while acknowledging the need to accommodate growth.*~~

### Role in State, Regional, and County Planning Framework

*The Washington State Growth Management Act (RCW 36.70A.070 (3)) requires planning for capital facilities, including park and recreational facilities. RCW 36.70A.070 (8) states that a city’s comprehensive plan shall include a park and recreation element that implements, and is consistent with, the capital facilities plan element as it relates to park and recreation facilities.*

*Puget Sound Regional Council’s Vision 2050 Multicounty Planning Policies call for jurisdictions in the region to provide parks, trails, and open space within walking distance of urban residents and to prioritize historically underserved communities for open space improvements and investments. Regional policies also support identifying and creating opportunities to develop parks, civic places, and public spaces, especially in or adjacent to centers.*

## Parks, Recreation, and Open Space Vision

SeaTac provides innovative parks, recreation, and open spaces that are welcoming and available to all people in the community for health, fun, and community building....

Parks, Recreation, and Open Space Element

[King County Countywide Planning Policies align with regional policies in supporting the provision of parks, trails, and open space within walking distance of urban residents and prioritizing historically underserved communities for open space improvements and investments. The Countywide Planning Policies also support planning for residential neighborhoods that protect and promote the health and well-being of residents by supporting equitable access to parks and open space and safe pedestrian and bicycle routes connecting neighborhoods to parks and open space and other public spaces and services.](#)

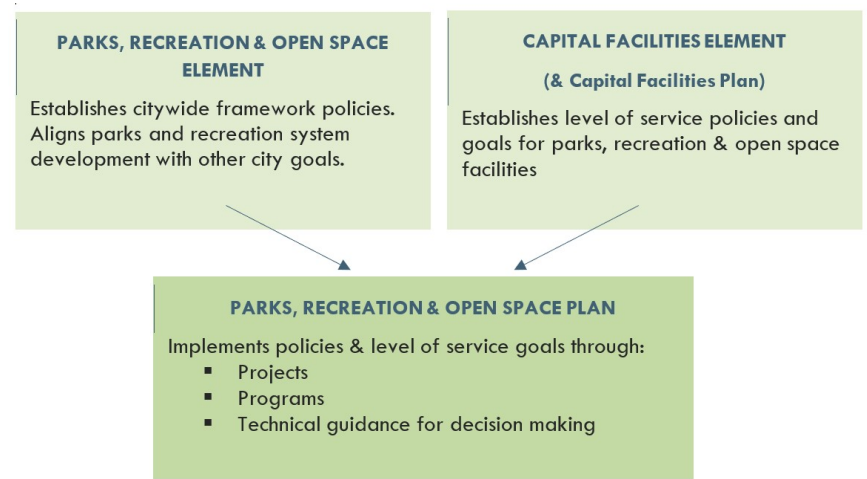
### Consistency with Other Elements

[The Parks, Recreation, and Open Space Element is closely coordinated with the Land Use, Housing and Human Services, Transportation, Capital Facilities, and Environment Elements.](#)

## Relationship to the Parks, Recreation, and Open Space Plan

[SeaTac’s Parks, Recreation, and Open Space Plan \(PROS Plan\) serves as the background report for this element. The PROS Plan is a functional plan that is updated on a regular basis and is used to fulfill the requirements for capital facilities, including parks planning. The 2020 Parks, Recreation, and Open Space Plan \(PROS Plan\) is the primary guiding document for this Element. It provides supporting information and specific guidance on the goals and the policies in the PROS Element.](#) The PROS Plan consists of:

- An overview of the City’s population and its characteristics;
- Information about the PROS Planning process, including demands and needs;
- Major issues, goals, and objectives;
- A 10-year repair and replacement plan;
- An inventory of the City’s parks;
- Information about the Department’s programs; and
- Recommendations for implementation.



## Major Conditions

SeaTac is a growing community in an area that is already highly developed. Growth will occur primarily through redevelopment, whether it is for residential, business, or civic uses such as parks and recreation. Given such conditions future development of the parks system is anticipated to address the following issues:

- The provision of neighborhood and community park amenities within ½ mile of all residents. In denser urban areas near light rail stations or the City Center a ¼ mile standard is targeted.
- The development of existing park lands by adding new facilities and amenities in accordance with community needs.
- Emphasis on connecting parks to each other and other civic facilities through a comprehensive set of trails.
- Adding indoor facilities to the City's inventory to support recreation programming, community gathering, and activity options during inclement weather.
- Continued investment in the maintenance and operations of the system as it grows.
- Balancing active and passive recreation facilities to meet community needs.

## Goals and Policies

This section contains SeaTac's parks, recreation, and open space goals and policies. Goals demonstrate the conditions that SeaTac is striving for in the development of its parks and recreation system. The policies provide the direction needed to achieve each goal's intent. *Please note that the goals and objectives in the Parks, Recreation, and Open Space plan are the same as the policies of the Comprehensive Plan.*

### GOAL ~~10.8.1~~

#### **Provide diverse active and passive recreational opportunities through a parks, open spaces, interlinking trails, programs, events, and community centers system.**

*Developing an efficient, quality park, and recreation system and program requires sound planning for the future. The City of SeaTac established level of service measures to guide the development of the system as its population grows and changes.*

##### **Policy ~~10.8.1A~~**

Use the level of service for Capital Investments as the primary measure of SeaTac's ability to provide parks facilities that keep pace with population growth.

*While other level of service (LOS) measures guide the development of a PROS system that meets a wide variety of community needs and demands, the Capital Investments LOS is the best measure of whether the system is keeping pace with overall community growth.*

##### **Policy ~~10.8.1B~~**

Use the PROS Capital Improvement Program as the primary source for identifying park projects.

*The PROS plan includes a detailed Capital Improvement Plan (CIP) covering a 6-year and 10-year period. The PROS plan's CIP serves as an aid in obtaining outside funding for park projects.*

##### **Policy ~~10.8.1C~~**

Use the level of service for Operations and Maintenance to ensure the quality of PROS facilities and programs as the community grows.

*Operations and Maintenance LOS is a helpful measure to ensure that as the parks system grows the City has adequate budget to maintain the existing system.*

##### **Policy ~~10.8.1D~~**

Add community and neighborhood park facilities with a blend of active and passive facilities to achieve the adopted level of service standard.

*SeaTac residents identified the importance of having both active and passive facilities in the parks system. Parks facilities serve many different community needs including spaces for maintaining mental and physical health, community gathering, entertainment, and experiencing the natural world. Special use parks in the urban center may also be counted and community and neighborhood park facilities.*

##### **Policy ~~10.8.1E~~**

Expand existing Community Center facilities or add new indoor facilities to maintain the adopted level of service.

*Indoor facilities are multi-purpose spaces that support recreation programming, community gathering, and respite from inclement weather. New indoor facilities may be added by increasing the number or square footage of City facilities, or through cooperative agreements with community partners.*

## Parks, Recreation, and Open Space Element

**Policy ~~10.8.1~~1F**

Develop a system of distinctively designed recreational trails (pedestrian/jogging/bicycle/horse) throughout SeaTac, both within and between parks, that provide better access by connecting parks and recreation facilities to the local and regional trail system.

*Recreational trails provide linkages between parks that enhance public enjoyment of natural features within the City, improve mobility and access, and promote public health.*

**Policy ~~10.8.1~~1G**

Continue the City's existing process to evaluate recreational needs through a variety of methods including input from community members such as advisory committees, surveys, and findings from the PROS Plan.

*Developing an efficient, quality park and recreation system and program requires sound planning. ~~Planning requires, requiring~~ continual public participation to assure that the community's desires are identified and addressed. Advisory committees are an effective means to include public participation.*

**GOAL 8.2**

**Support the implementation of the City's growth strategies that promote the creation of centers, villages, and complete neighborhoods through the provision of equitable access to parks, recreation, and open space facilities.**

**Policy ~~10.8.2~~A**

Provide neighborhood or community parks within one-half mile walking distance of households and a variety of accessible parks, recreational land uses, open spaces, and trails in convenient locations throughout the City.

**Policy ~~10.8.2~~B**

Aim for one-quarter mile walking distance to a neighborhood or community park for higher density residential areas and the designated Urban Villages.

**Policy ~~10.8.2~~C**

Support the creation of village squares within designated Urban Villages and Neighborhood Villages as community focal points for recreation and cultural activities and events.

## Parks, Recreation, and Open Space Element

**GOAL ~~10.8.32~~****Preserve and acquire land for a comprehensive system of parks, open spaces, and trails that responds to the recreational, environmental, health, and aesthetic needs and desires of park users.**

*New PROS facilities may come through new acquisition, but also through expansion or improvement of existing facilities, or through cooperative agreements with other public and non-profit agencies. While Goal ~~10.8.1~~ and adopted level of service measures guide the types and ~~amount-number~~ of facilities needed to grow SeaTac's system as the city's population increases, this goal directs the distribution of parks facilities and recreational programming within the system. The City has consistently aimed to achieve the policy of all residents living within a ½ mile walk of a neighborhood or community park. ~~This, which~~ ensures geographic equity and accessibility to the health and recreation benefits of these facilities. Within the City's Urban Center, and especially in the areas surrounding the light rail stations at Angle Lake, the City Center, and S 154th Street, SeaTac should strive to provide parks within ¼ mile walkable areas. In these areas intended for SeaTac's highest density urban development residents, businesses, and visitors all benefit from increased availability of parks and open space areas.*

**Policy ~~10.8.32A~~**

Continue City efforts to expand the PROS system so that all residents live within one-half mile of a community or neighborhood park, and prioritize the creation of new facilities and improvement of existing facilities in historically underserved areas.

*Park facilities with opportunities for active and passive recreation are essential for a thriving community. Facilities within at least a half mile provide for a walkable system and implement the City's complete neighborhood goals. ~~Special Use parks in the Urban Center may be counted as community or neighborhood parks. One quarter mile access is a target for those living in high density residential areas including Urban Villages and Neighborhood Villages. Consideration of realigning this goal to the more nationally recognized one quarter mile base standard will be undertaken in next PROS Plan update.~~*

**Policy ~~10.8.32B~~**

Prioritize the acquisition of new land for parks and recreation using the following criteria:

- The proposed acquisition serves an identified gap area, as shown on the Gap and Opportunity Maps.
- The proposed acquisition furthers the goals or objectives of other adopted City plans or initiatives including Urban Village, Neighborhood Village, and complete neighborhood goals and those related to (such as those for) human services, arts and culture, transportation, economic development, ~~et~~ and others.
- The proposed acquisition is within ½ mile of rapid or mass transit facilities or serves a high population density.
- The proposed facility builds multi-use trails that connect parks and recreational facilities.
- The proposed acquisition is located where there are no other recreation partner facilities and the City is the best provider of service, or the acquisition leverages other recreation partner investments (e.g. schools, non-profits) to advance healthy lifestyles in underserved areas.
- The proposed acquisition can meet the criteria for a neighborhood park or special use park in the Urban Center.

*New land acquisitions are opportunities for creating a stronger linkage between the PROS system and citywide goals for equity, transportation, and land use. The PROS plan contains additional information on balancing these priorities.*

**Policy ~~10.8.32C~~**

Prioritize the expansion, redevelopment, or improvement of existing vacant or underutilized facilities using



## Parks, Recreation, and Open Space Element

the following criteria:

- The proposed facility serves an identified gap area, as shown on the Gap and Opportunity Maps.
- The proposed facility leverages the existing system and adds capacity and variety to serve more users.
- The proposed facility expands the use of school or other publicly- owned sites.
- The proposed facility creates a neighborhood or community park.
- The proposed facility creates indoor recreation space.
- The proposed facility builds multi-use trails that connect parks and recreational facilities.
- The proposed acquisition furthers the goals or objectives of other adopted City plans or initiatives (such as those for human services, arts and culture, transportation, economic development, etc.).
- The proposed expansion, redevelopment, or improvement serves a high population density, or accessible by frequent transit service (twice per hour or better).
- The proposed facility addresses the need for additional active recreational facilities as identified through the PROS Plan or other community engagement processes such as athletic fields, dog parks, or other special use needs.

*It is anticipated that the PROS system will mostly grow through redevelopment and expansion. Applying these priorities help to identify projects that fulfill the most objectives of the PROS plan and other City initiatives. The PROS plan contains additional information on balancing these priorities.*

**Policy 10.8.32D**

Identify lands appropriate for park and open space purposes including:

- Lands that provide access to residents that are currently more than ½ mile from an existing park, recreation, or open space facility.
- Lands that implement Urban Village, Neighborhood Village, or complete neighborhood goals.
- Natural areas and features with outstanding scenic or recreational value;
- Lands that may provide public access to creeks and lakes;
- Lands that visually or physically connect natural areas or provide important linkages for recreation, plant communities, and wildlife habitat;
- Lands valuable for active and passive recreation, such as athletic fields, trails, fishing, swimming, or picnic activities on a regional or community-sized scale;
- Lands that provide an appropriate setting and location for community center facilities or park land, if the needs evaluation reflects a deficiency; and
- Park land that enhances the surrounding land uses.
- ~~Lands that provide access to residents that are currently more than ½ mile from an existing park, recreation, or open space facility.~~

*Land acquisition requires considerable forethought since land is expensive and commits the City to maintenance responsibilities. Benefits of park and open space acquisition include establishing greenbelts, reserving wildlife habitat, protecting natural features, connecting people to open space, and providing access to water, unique recreational opportunities, and social gathering places.*

*While parks and open space have benefits, impacts on surrounding land uses should be considered when evaluating alternative sites. ~~Impacts may include~~ traffic, noise, and lighting. The evaluation should consider how the park will relate to the surrounding neighborhood and other adjacent land uses.*

## Parks, Recreation, and Open Space Element

**Policy 10.8.32E**

Establish and require recreation and open space in new commercial and residential development, especially in new multifamily development.

*The City should require on-site recreational opportunities (e.g., shared open space, pocket parks, plazas, decks, balconies, and small yards) in ~~townhouse, residential medium high and high density, and residential high mixed use land use designations~~ multifamily residential developments, especially in areas identified as deficient in neighborhood parks. In addition, commercial and mixed-use developments should be required to provide publicly accessible open space, seating, gathering areas, and/or other recreational opportunities.*

**GOAL 10.8.43**

**Provide a balanced, quality park and recreational system and offer a wide range of park and recreational facilities to community members and visitors of various ages and physical capabilities, cultural backgrounds, abilities, incomes, and participation levels.**

*SeaTac is a growing community of people from diverse backgrounds and cultures and visited by people from around the world. Parks and recreation facilities promote healthy and active lifestyles, help build community identity, and are significant public amenities. As such they need to be accessible and affordable to people of all ages, cultural and ethnic backgrounds, incomes, physical abilities, and participation levels. People rely on public parks for physical and mental health, entertainment, play, recreation, and socialization opportunities. It is important to continue developing the system to serve a wide range of community needs and interests.*

**Policy 10.8.43A**

Develop recreation facilities and programs that accommodate a range of ages, cultures, and activities.

*As community demographics change, the City should provide adequate facilities for community members of a range of ages. Facilities targeted to specific age groups include playgrounds, swings, or slides for children; basketball courts, baseball fields, or skate parks for youth; trails or wildlife viewing areas for adults; and picnic areas for all ages. Community centers should offer programs and activities oriented toward children, youth, adults, and older adults.*

**Policy 10.8.43B**

Provide recreational opportunities that do not discriminate against any participant, regardless of race, creed, color, sex, or special need, and eliminate barriers to special populations, such as elderly, physically challenged, and economically disadvantaged people.

*To be socially accessible, park and recreational facilities should be available to all segments of the population, regardless of social status or other considerations. Park programming should be geared to a wide range of age groups and interests. In addition, City parks and recreation should not discriminate based on the race, creed, sex or other special needs of the participants.*

**Policy 10.8.43C**

Develop and expand community-oriented enrichment programs and events that are affordable, responsive to expressed demands, and address identified community needs.

*Quality, accessible, affordable recreational programming is important, particularly for the growing population of children, youth, and older adults. Programming has the potential to foster community identity and support, which can help immigrant populations feel more at home in the community. Access to all programs and an adequate range of activities that appeal to different segments of the community is a paramount consideration.*

**Policy 10.8.43D**

Bring innovative recreation opportunities to SeaTac that serve the community and distinguish the City from

NOTE: Policies are in plain text with supporting discussions in *italicized text*.

## Parks, Recreation, and Open Space Element

surrounding communities.

*SeaTac has a history of developing unique facilities and programs that reflect the needs, interests, cultures, and abilities of residents such as the BMX bike track, cricket pitch, concert stage, futsal court, or disc golf course. These amenities are valued by residents and provide a diverse set of opportunities for recreation, fun, health, and entertainment.*

**Policy ~~10.8.43~~E**

Provide opportunities to connect to health and human services resources through the parks and recreation system.

*Often those in need of health and human services assistance gravitate toward parks and recreation amenities as a source of shelter, resources, and assistance. Community centers, parks facilities, and recreation programs provide an opportunity to connect those in need to community resources that can help them.*

**GOAL 10.8.54****Maintain, remodel, and upgrade park and recreational facilities to respond to changing uses and attain and preserve operational efficiency.**

*Maintenance of the parks system is a priority to SeaTac residents because they value the amenities of the system and wish to ensure the safety and usability of their investment.*

**Policy 10.8.54A**

Periodically review buildings and other park improvements to determine if the public's needs are being met and make changes as necessary to meet those needs efficiently.

*Park staffing, programming, and operations should be reviewed periodically in relationship to safety, efficiency, desired level of service, and community input. Park surveys should be distributed to document changes in public sentiment and general public need.*

**Policy 10.8.54B**

Design, maintain, and modify parks and recreational facilities in a manner that ensures the public's safety and accessibility, allows year round use, and results in low public maintenance costs when possible.

*As needs change and existing facilities age, redevelopment of existing facilities may occur. ~~Redevelopment~~ and should meet changing needs and promote safety and accessibility. The Americans with Disabilities Act requires that all parks are reasonably accessible to all community members. The City should evaluate parks and develop a renovation plan to address accessibility and safety issues. ~~Additionally, the City, and~~ should monitor and evaluate low public maintenance techniques wherever applicable.*

**Policy 10.8.54C**

Provide clean, safe, and attractive parks for public use through a maintenance program commensurate with the intensity of use and character of the park and facilities.

*The City should consider all acquisition and development projects in the context of future maintenance responsibilities. ~~as well~~ well-maintained parks encourage use and promote community pride.*

**Policy 10.8.54D**

Encourage volunteer and civic groups to take part in appropriate periodic maintenance and improvement of park facilities.

*To offset some maintenance costs and promote community identity and involvement, civic and community-based organizations should be encouraged to participate in maintenance activities.*

## Parks, Recreation, and Open Space Element

**Policy 10-8.54E**

Minimize parks and recreational facilities' impacts (e.g., noise, security, lighting, and traffic) on adjacent neighborhoods.

*City review of new development should minimize or eliminate parks impacts upon adjacent uses.*

**GOAL 10-8.65****Ensure safe and convenient access to recreational lands, facilities, and programs.**

*Parks and recreation facilities should be physically and socially accessible. This includes locating larger regional and community parks in locations that are easily accessed by car or public transit and by linking facilities through a system of trails, sidewalks, and bike lanes consistent with SeaTac's non-motorized transportation plans.*

**Policy 10-8.65A**

Locate major recreational facilities that generate large amounts of traffic (e.g., ballfields) on sites with public transit and direct arterial street access.

*Park and recreation facilities should be physically and socially accessible. To be physically accessible, heavily-trafficked parks should be located along major transportation routes at public transit stops.*

**Policy 10-8.65B**

Promote uniform signage and lighting throughout the City's system of parks, open space, and trails.

*Signage and lighting promote safety and wayfinding in City parks and recreation facilities.*

**Policy 10-8.65C**

Improve access to SeaTac parks and recreation facilities by using signage to provide wayfinding from other civic locations.

*Wayfinding in the community helps to connect parks to the community.*

**Policy 10-8.65D**

Coordinate parks, open space, pedestrian walkways, bike paths, and urban trail system development with the area's unique open space settings including wetlands, creeks, greenbelts, and other environmentally sensitive or historic sites.

*Public and private development of pedestrian, bicycle, and equestrian trails should be integrated with natural and historic features*

**GOAL 10-8.76****Cooperate with governmental agencies, special districts, nonprofit organizations, and private businesses in providing publicly accessible open space, park facilities, and recreation services.**

## Parks, Recreation, and Open Space Element

*Intergovernmental and interagency coordination is important to extend the reach of recreational facilities across boundaries and increase potential funding sources. SeaTac has many potential partners such as the Port of Seattle, adjacent Cities, King County, the Highline School District, the YMCA, and multiple utility districts. Coordination with others may provide permanent or temporary solutions to addressing PROS system needs.*

**Policy ~~10.8.76A~~**

Collaborate with agencies, special districts, and other Cities to develop and utilize the community's recreational capabilities.

*SeaTac's partners include the Port of Seattle, adjacent Cities, King County, the Highline School District, and multiple utility districts. The Port of Seattle has, through its noise acquisition program, acquired large areas of property within the City of SeaTac that could be used for community trails and open space. In addition, shared use of transportation rights-of-way can provide trail and open space linkages, such as the SR 509 extension or the 28th/24th arterial corridors. Also see Transportation Element strategies. [See related Policy 10.8.3B. See the Transportation Element for right-of-way plans.](#)*

**Policy ~~10.8.76B~~**

Work with local school districts to maximize the use of school facilities as activity and recreation centers for all ages.

*Locating youth programs at the school facilities provides easy access to this sometimes difficult to reach user group. Youth facilities and programs have been identified by the public as important elements in the City recreation programming and facility development.*

**Policy ~~10.8.76C~~**

Encourage cooperative planning and use of recreational facilities with private businesses, nonprofit organizations, and other groups in the City.

*The City has active volunteer groups, private community clubs, and businesses that operate facilities and recreation programs. Cooperating with these groups extends opportunities for local residents and employees, reduces duplication, increases the success of grant applications, and provides funding and staffing in addition to City sources.*

**Policy ~~10.8.76D~~**

Pursue a variety of funding and assistance mechanisms for park acquisition and development, including public funding, outside funding, shared use of transportation rights-of-way, and dedications from large residential and commercial developments.

*City and non-City funds and creative sharing agreements are available for developing parks and recreation opportunities. ~~Non-City sources, including include~~ funding and services that are offered through County, State, and national agencies; volunteer donations; and development and other negotiated agreements. These sources can be used to increase park capital improvement funding.*

**Policy ~~10.8.76E~~**

Involve private businesses, service organizations, and neighborhood groups in planning and developing recreational opportunities for neighborhoods and the community.

*The City should encourage private businesses, service organizations, and the general public to participate in the park and recreation process. Many community service groups are interested in doing projects which benefit local residents. ~~The and the~~ City can promote private involvement by identifying needs and providing support [to these groups](#).*

**GOAL ~~10.8.87~~**

## Develop community-wide recreational resources which respond to and are consistent with unique site characteristics and community desires.

### North SeaTac Park

#### Policy ~~10.8.87A~~

Develop North SeaTac Park in accordance with the North SeaTac Park Master Plan and Airport land use and safety guidelines.

*North SeaTac Park, which is still partially undeveloped, is a community-wide resource with great potential for addressing park and recreational needs.*

*The North SeaTac Park Master Plan details proposed development for the [North SeaTac Park](#), ~~and~~ [As a park it is located](#) just north of the Airport's runways, the Master Plan takes into account Airport land use and safety guidelines.*

#### Policy ~~10.8.87B~~

Preserve the area surrounding Tub Lake as a natural wetland and increase opportunities for public enjoyment of the area.

*Tub Lake is a natural peat bog existing since prehistoric times and a valuable resource for natural aquifer recharge. It has opportunities for interpretive interaction, passive use boardwalks, and wildlife viewing. As such, it should be preserved and protected.*

#### Policy ~~10.8.87C~~

Develop environmentally sensitive public trails connecting the Lakes to Sound Trail to SeaTac Community Center and natural features such as Tub Lake and adjacent wetlands.

*The Lakes to Sound Trail, especially the section along Des Moines Memorial Drive, offers opportunities to connect with natural features, such as Tub Lake and adjacent wetlands. With improved access, these resources can be both recreational and educational. Environmentally sensitive trails could include foot, bike, and/or equestrian trails as appropriate.*

### Des Moines Creek

#### Policy ~~10.8.87D~~

Preserve the Des Moines Creek area and extend the Des Moines Creek Trail north to Miller Creek and North SeaTac Park with connections to the Lakes to Sound Trail.

*The community continues to express support for preservation and passive use of Des Moines Creek. The Des Moines Creek Park property is characterized by a wooded ravine with a creek, which begins at S. 200th Street in SeaTac and continues south to Puget Sound in the City of Des Moines. ~~The Pedestrian Facilities map (see Transportation Element) identifies a trail extension continuing northward along the SR-509 right-of-way. King County is spearheading the completion of the 16-mile non-motorized, multi-use recreational Lake to Sound trail spanning from the south end of Lake Washington in Renton, through SeaTac, to the shoreline of Puget Sound in Des Moines. The trail will connect in SeaTac along the west side of North SeaTac Park and extend through the Des Moines Creek Park trail to the City of Des Moines marina. In addition to its recreational value, Des Moines Creek's importance as a fish and wildlife habitat area will be enhanced by this policy.~~*

#### Policy ~~10.8.78E~~

~~Continue work on improving the western addition to Des Moines Creek Park, purchased from the Washington State Department of Transportation (WSDOT), to enhance recreation opportunities and the natural functions of Des Moines Creek and its wetlands. Work with the Washington State Department of Transportation (WSDOT) on land south of S. 200th Street as open space for the enjoyment of local residents and prohibit vehicular traffic from these open space areas.~~

Parks, Recreation, and Open Space Element

*The natural character of the ravine provides a type of open space which is not found in other areas of the City. The corridor also accommodates a rich array of wildlife and wildflowers, as well as access to a water environment within the City, ~~and~~ ~~Ret~~aining these features is important to the quality of this park experience.*

## **Bow Lake**

### **Policy 10.8.87F**

Seek public access to waterfront area(s) of Bow Lake.

*Bow Lake is located within a highly urbanized area, surrounded by private commercial development and parking. With acquisition or negotiation of public access and new development to attract activity, Bow Lake could provide a recreational resource in this area.*

## **Historical and Archaeological Resources**

### **Policy 10.8.87G**

Retain significant historical and archaeological resources.

*Historical and archaeological resources contribute to community character and maintain ties to the past.*

## *Parks, Recreation and Open Space (PROS)* *Element*

### *Maps\**

*\*Maps in this element are anticipated to be revised as part of the next PROS Plan update process.*

Map ~~108~~.1.Parks and Recreational Facilities

Map ~~10.8~~2.Gap and Opportunity Map – North

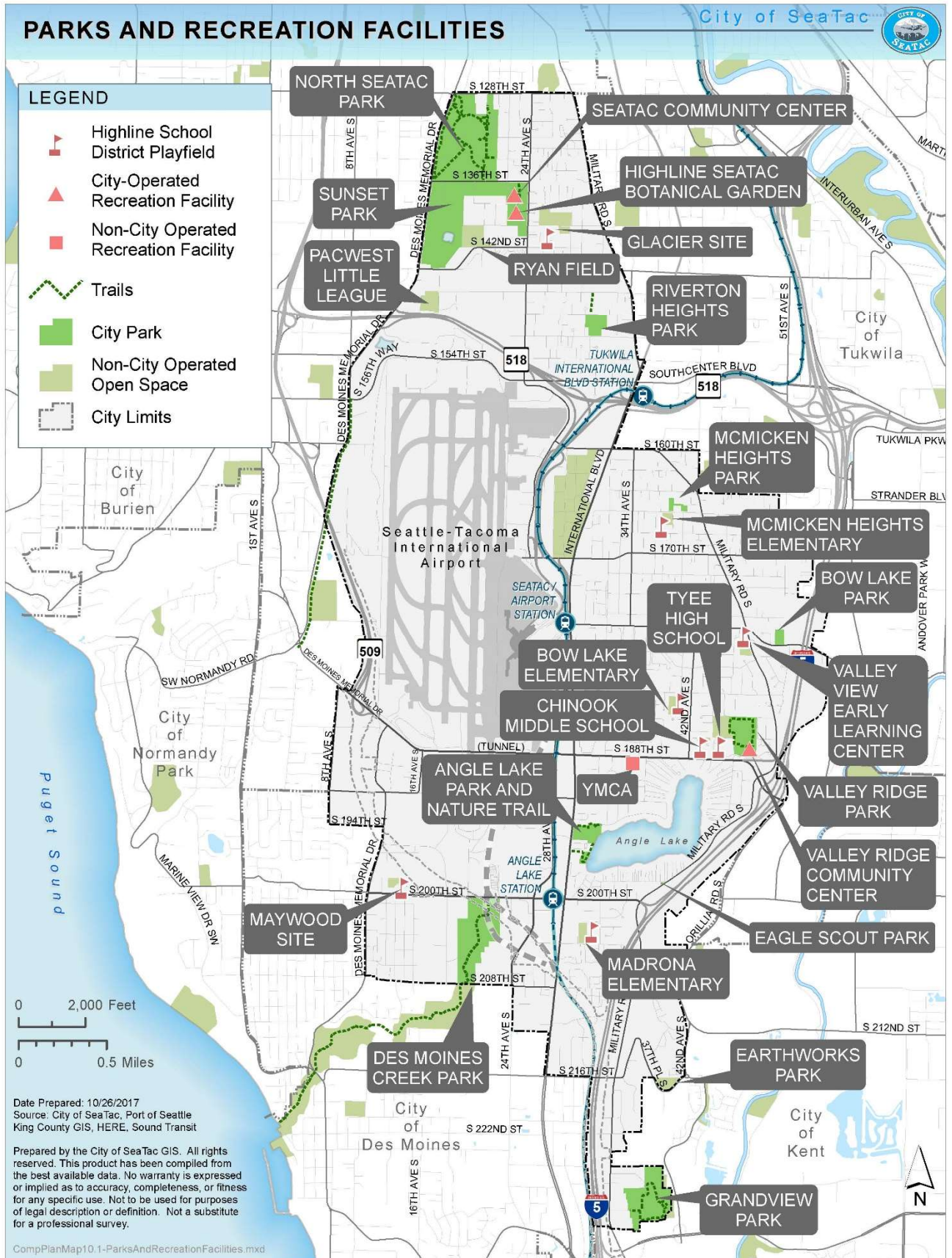
Map ~~108~~.3.Gap and Opportunity Map – Central

Map ~~108~~.4 Gap and Opportunity Map - South

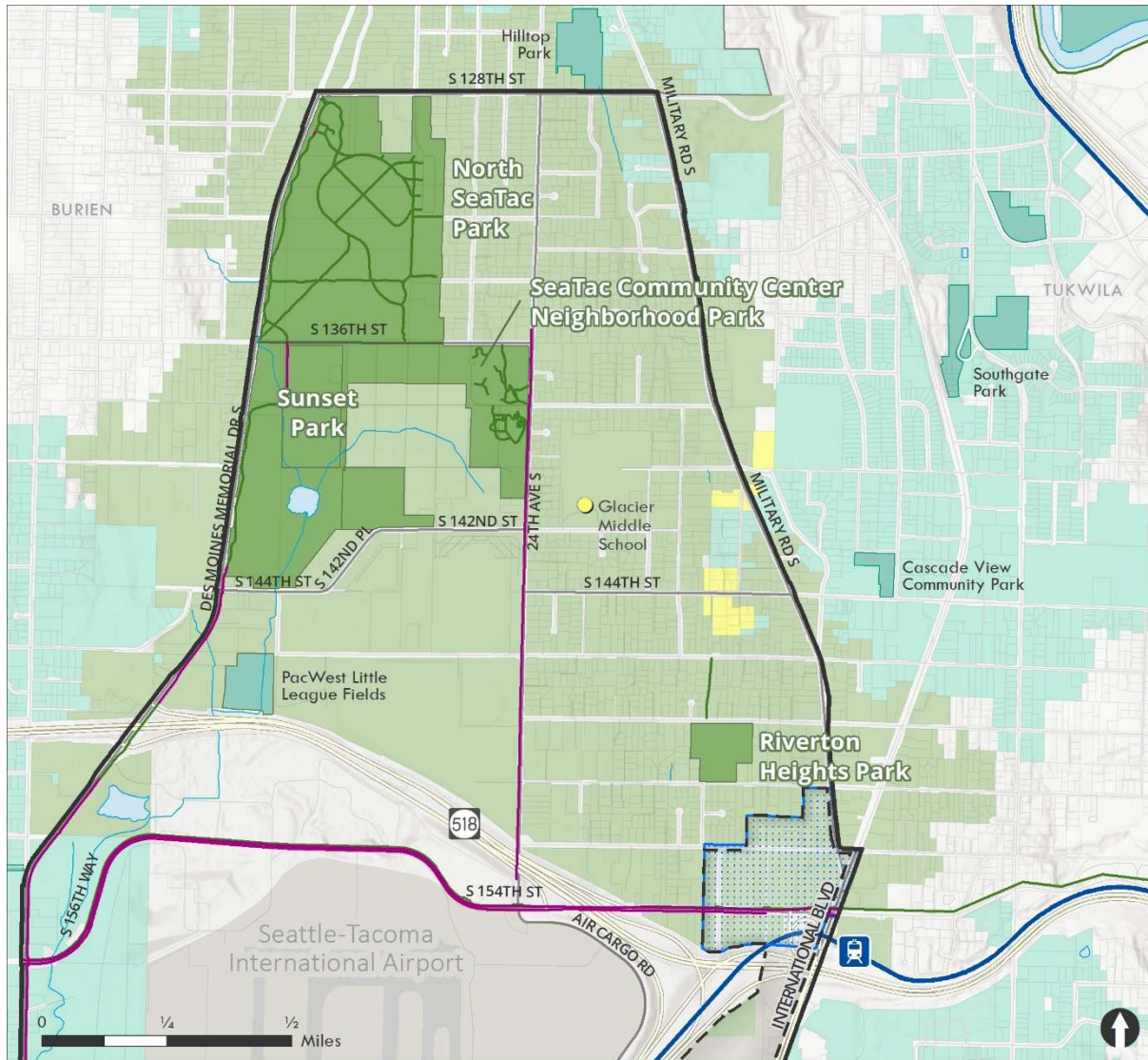
---



Parks, Recreation, and Open Space Element



Parks, Recreation, and Open Space Element



**Public Facilities**

- SeaTac Parks
- Non SeaTac Parks
- Schools

**Service Areas (Displayed in Order)**

- SeaTac Parks - 1/2 Mile Parcels
- Non SeaTac Parks - 1/2 Mile Parcels
- SeaTac Schools - 1/2 Mile Parcels



SeaTac City Limits



Park and Gap Opportunity Areas



Urban Center Boundary



Station Areas



Parcel Outlines



Light Rail Station



Link Light Rail



Trails

Bicycle Network

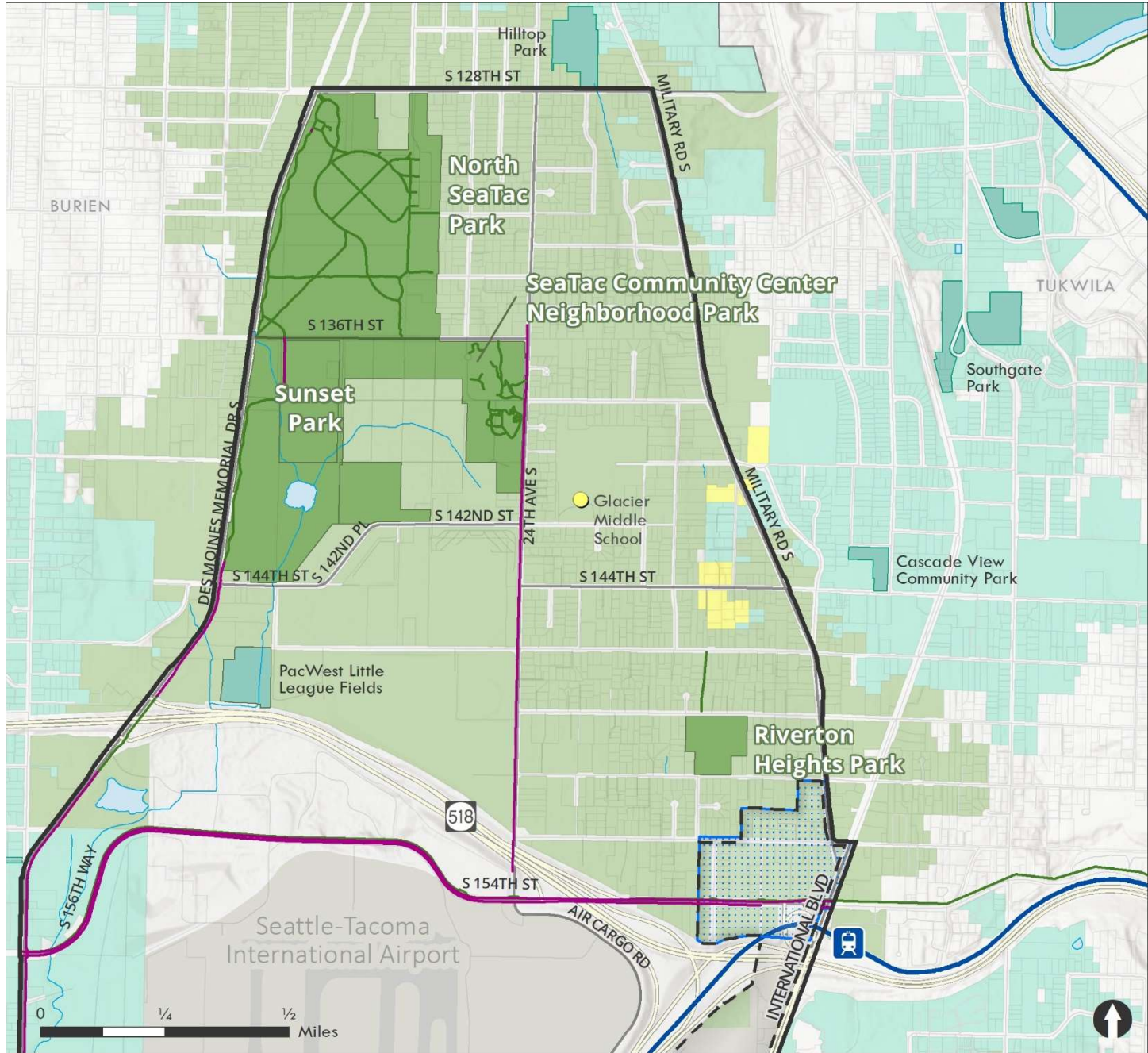
Waterbodies

**Note:** Public Facilities Service Areas is defined by travelling 1/2 mile on streets or trails from a SeaTac park, SeaTac School, or Non SeaTac Park. Distances from parks are calculated along a network consisting of SeaTac and King County street centerlines and trails. A 50 ft buffer was used on the parks layer in order to ensure and intersection between the transportation network used and the park boundary. Any intersection where a trail or road crosses a park boundary is considered an access point for that given park, and is used as a point from which distance traveled is calculated.

Map Date: 10/26/2020, Map Creator: BERK Consulting  
Data Sources: City of SeaTac, 2020; King County GIS, 2020; WSDOT, 2020



Parks, Recreation, and Open Space Element



**Public Facilities**

- SeaTac Parks
- Non SeaTac Parks
- Schools

**Service Areas (Displayed in Order)**

- SeaTac Parks - 1/2 Mile Parcels
- Non SeaTac Parks - 1/2 Mile Parcels
- SeaTac Schools - 1/2 Mile Parcels

- SeaTac City Limits
- Park and Gap Opportunity Areas
- Urban Center Boundary
- Station Areas
- Parcel Outlines
- Light Rail Station
- Link Light Rail
- Trails

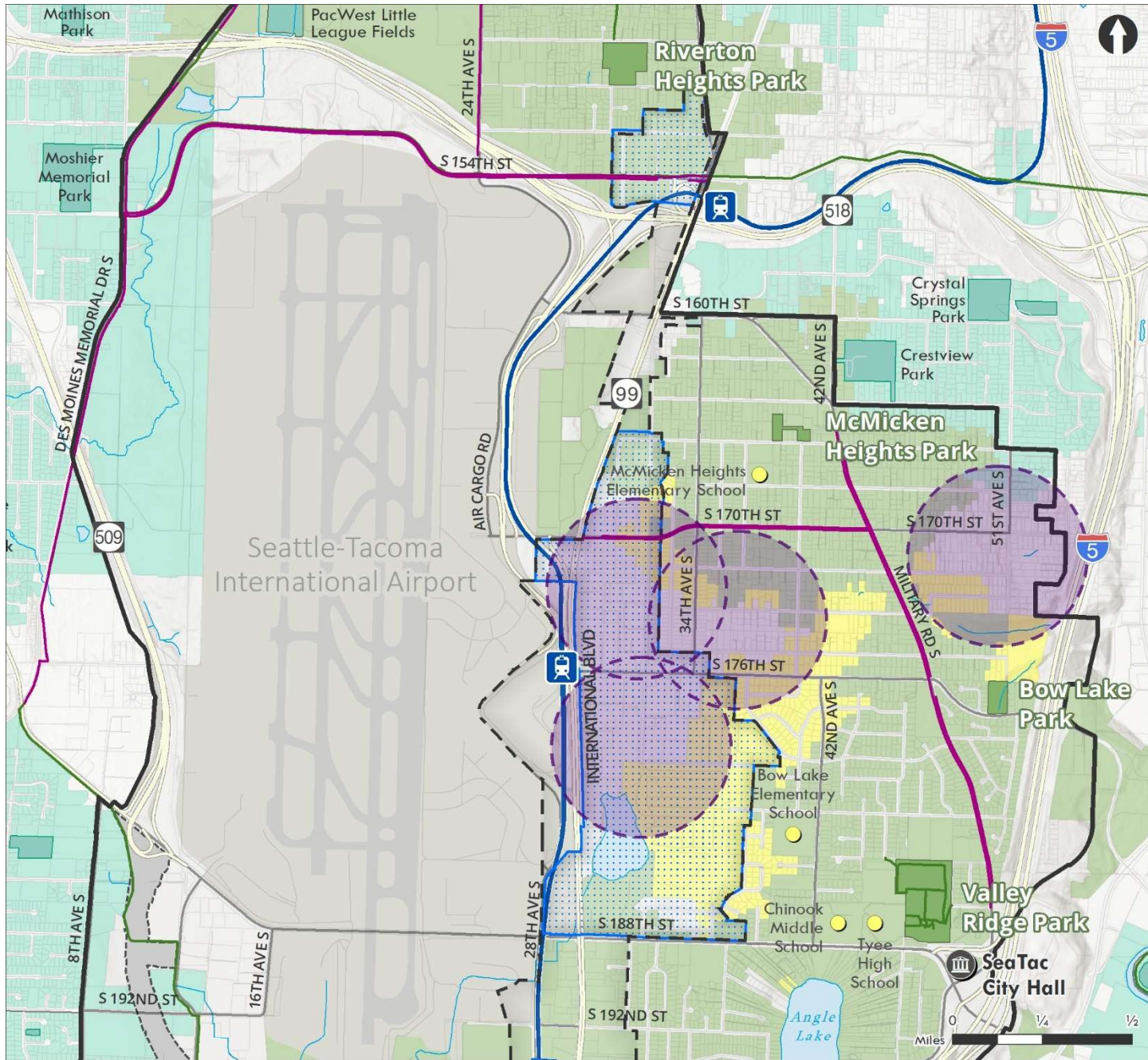
- Bicycle Network
- Waterbodies

**Note:** Public Facilities Service Areas is defined by travelling 1/2 mile on streets or trails from a SeaTac park, SeaTac School, or Non SeaTac Park. Distances from parks are calculated along a network consisting of SeaTac and King County street centerlines and trails. A 50 ft. buffer was used on the parks layer in order to ensure and intersection between the transportation network used and the park boundary. Any intersection where a trail or road crosses a park boundary is considered an access point for that given park, and is used as a point from which distance traveled is calculated.

Map Date: 10/26/2020, Map Creator: BERK Consulting  
 Data Sources: City of SeaTac, 2020; King County GIS, 2020; WSDOT, 2020



Parks, Recreation, and Open Space Element



**Public Facilities**

- SeaTac Parks
- Non SeaTac Parks
- Schools

**Service Areas (Displayed in Order)**

- SeaTac Parks - 1/2 Mile Parcels
- Non SeaTac Parks - 1/2 Mile Parcels
- SeaTac Schools - 1/2 Mile Parcels



SeaTac City Limits



Park and Gap Opportunity Areas



Urban Center Boundary



Station Areas



Parcel Outlines



Light Rail Station



Link Light Rail



Trails

Bicycle Network

SR509 Future Right-of-Way

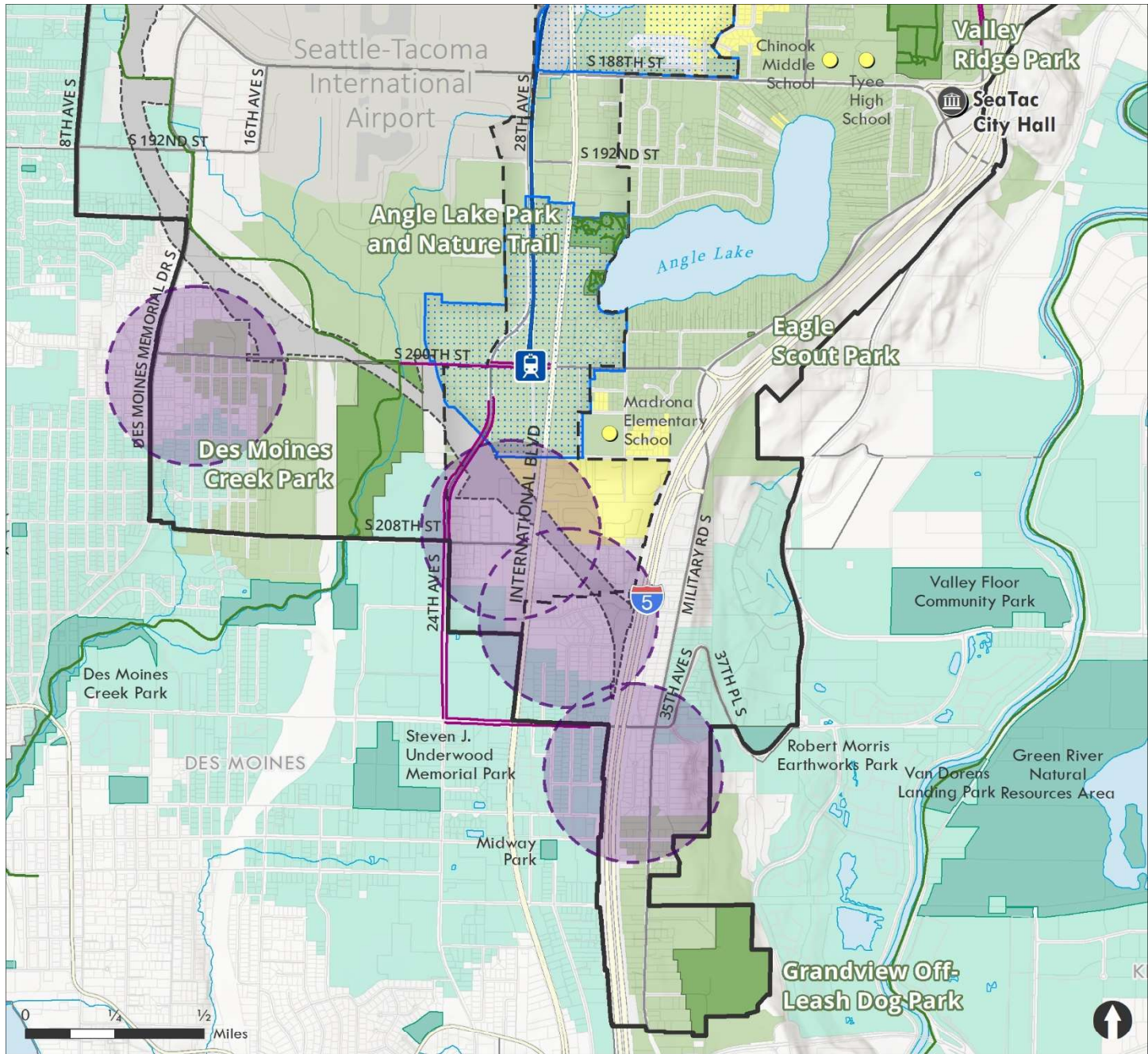
Waterbodies

**Note:** Public Facilities Service Areas is defined by travelling 1/2 mile on streets or trails from a SeaTac park, SeaTac School, or Non SeaTac Park. Distances from parks are calculated along a network consisting of SeaTac and King County street centerlines and trails. A 50 ft. buffer was used on the parks layer in order to ensure and intersection between the transportation network used and the park boundary. Any intersection where a trail or road crosses a park boundary is considered an access point for that given park, and is used as a point from which distance traveled is calculated.

Map Date: 10/26/2020, Map Creator: BERK Consulting  
Data Sources: City of SeaTac, 2020; King County GIS, 2020; WSDOT, 2020



Parks, Recreation, and Open Space Element



**Public Facilities**

- SeaTac Parks
- Non SeaTac Parks
- Schools

**Service Areas (Displayed in Order)**

- SeaTac Parks - 1/2 Mile Parcels
- Non SeaTac Parks - 1/2 Mile Parcels
- SeaTac Schools - 1/2 Mile Parcels



SeaTac City Limits



Park and Gap Opportunity Areas



Urban Center Boundary



Station Areas



Light Rail Station



Link Light Rail



Trails

Bicycle Network

SR509 Future Right-of-Way

Waterbodies

**Note:** Public Facilities Service Areas is defined by travelling 1/2 mile on streets or trails from a SeaTac park, SeaTac School, or Non SeaTac Park. Distances from parks are calculated along a network consisting of SeaTac and King County street centerlines and trails. A 50 ft. buffer was used on the parks layer in order to ensure and intersection between the transportation network used and the park boundary. Any intersection where a trail or road crosses a park boundary is considered an access point for that given park, and is used as a point from which distance traveled is calculated.

Map Date: 10/26/2020, Map Creator: BERK Consulting  
Data Sources: City of SeaTac, 2020; King County GIS, 2020; WSDOT, 2020





## RECOMMENDED IMPLEMENTATION STRATEGIES

As the Primary Responsibility column indicates, many of the implementation strategies will be initially undertaken by a specified board or commission. In most cases, the City Council will analyze the specific board/commission recommendation and make the final decision about how to proceed.

The time frame categories are defined as follows:

Short-Term	one to five years
Medium-Term	six to 10 years
Long-Term	11 to 20 years
Ongoing	the strategy will be implemented on a continual basis

The time frames are target dates set regularly when the City Council adopts amendments to the Comprehensive Plan.

The list of proposed implementation strategies is a minimum set of action steps and is not intended to limit the City from undertaking other strategies not included in this list.

*(Please note that the implementation below is the same as in the PROS Plan)*

Parks, Recreation, and Open Space Element

Policy	Implementation Strategies	Primary Responsibility	Time Frames
<b>Goal 10-8.1 Provide Recreational Opportunities</b>			
<b>10-8.1A</b> Use the level of service for Capital Investments as the primary measure of SeaTac’s ability to provide parks facilities that keep pace with population growth.	Review this level of service biennially.	Staff	Ongoing
<b>10-8.1B</b> Use the PROS Capital Improvement Program as the primary source for identifying park projects.	Update the Capital Improvement Program (CIP) for parks and recreation facilities on a biennial basis to reflect current needs and community interests.	Staff, City Council	Ongoing
	<a href="#">Coordinate with other departments when developing PROS Capital Improvement Plan (CIP) to ensure program and project alignment with complete neighborhood and other growth strategy goals.</a>	Staff	Ongoing
	Include the Parks CIP in the city’s capital facility planning and budget process.	City Council	Ongoing
<b>10-8.1C</b> Use the level of service for Operations and Maintenance to ensure the quality of PROS facilities and programs as the community grows.	Review this level of service biennially.	Staff	Ongoing
<b>10-8.1D</b> Add community and neighborhood park facilities with a blend of active and passive facilities to achieve the adopted level of service standard.	Use data collected in the PROS Plan and community input on parks planning processes to meet community demands for active and passive uses.	Staff	Ongoing
<b>10-8.1E</b> Expand existing Community Center facilities or add new indoor facilities to	Expand the SeaTac community center when needed.	Staff, City Council	Medium-term
	Expand the Valley Ridge community center when needed.	Staff	Short-term
	Coordinate use of the YMCA facility.	Staff, City Council	Ongoing



Parks, Recreation, and Open Space Element

Policy	Implementation Strategies	Primary Responsibility	Time Frames
maintain the adopted level of service.	Coordinate with community partners to use existing facilities, such as schools.	Staff, City Council	Ongoing
<p><b>10.8.1F</b></p> <p>Develop a system of distinctively designed recreational trails (pedestrian/jogging/bicycle/horse) throughout SeaTac, both within and between parks, that provide better access by connecting parks and recreation facilities to the local and regional trail system.</p>	Enable incentives to encourage major new developments greater than a certain size to incorporate an open space/ pedestrian path- way element into their site plan based on the pedestrian facilities plan (see transportation element). It should be designed to link together existing or future open space/ pedestrian paths from adjacent properties to the greatest extent possible (for example, a boardwalk along a portion of Bow Lake), or provide “in lieu of” fees.	Planning Commission, City Council	Short-term
	Identify internal and external funding sources for open space/pedestrian pathways when appropriate and possible.	Staff, City Council	Ongoing
	Coordinate with adjacent cities and other relevant agencies to develop or expand connections to designated regional open space/pedestrian trails.	Staff, City Council	Ongoing
<p><b>10.8.1G</b></p> <p>Continue the City’s existing process to evaluate recreational needs through a variety of methods including input from community members such as advisory committees, surveys, and findings from the PROS Plan.</p>	Revise the Parks, Recreation, and Open Space ( <a href="#">PROS</a> ) Plan every six years to maintain grant eligibility.	Staff	Ongoing
	<p><a href="#">In next PROS Plan Update, consider the following:</a></p> <ul style="list-style-type: none"> <li>• <a href="#">Incorporating park and facility visitation numbers into level of service standards.</a></li> <li>• <a href="#">Incorporating consideration of barriers to walkable access to parks and recreation facilities (and other modes of access) such as highways, arterial or busy streets, topography, and other barriers.</a></li> <li>• <a href="#">Encouraging access to parks and recreation activities through “green” connectivity corridors.</a></li> <li>• <a href="#">Working with agencies such as Trust for Public Land to provide guidance on best practice for parks and recreation systems.</a></li> <li>• <a href="#">Other innovative or community desired parks and recreation goals.</a></li> </ul>		

Parks, Recreation, and Open Space Element

Policy	Implementation Strategies	Primary Responsibility	Time Frames
	<p><del>Continue to incorporate</del> <u>Regularly seek community input, through surveys or other means, on parks, recreation, and open space-related questions into the recurring citywide resident-survey-systems and programs.</u></p>	Staff	Ongoing
	<p>Meaningfully engage community members (e.g., conduct public meetings) for major park renovation projects.</p>	Staff	Ongoing
<p><b>Goal 8.2 Support Growth Strategies through Parks, Recreation &amp; Open Space Facilities</b></p>			
<p><b><u>10-8.2A</u></b></p> <p><u>Provide neighborhood or community parks within one-half mile walking distance of households and a variety of accessible parks, recreational land uses, open spaces, and trails in convenient locations throughout the city.</u></p>	<p><u>Incorporate consideration of complete neighborhood goals for the provision of community or neighborhood parks within walking distance of all households into future PROS Plan updates and PROS CIP budget processes.</u></p>	<p><u>Staff, City Council</u></p>	<p><u>Medium-term</u></p>
<p><b><u>10-8.2B</u></b></p> <p><u>Aim for one-quarter mile walking distance to a neighborhood or community park for higher density residential areas and the designated Urban Villages.</u></p>	<p><u>Incorporate consideration of implementing complete neighborhood goals for the provision of community or neighborhood parks within walking distance of households in higher density residential areas and Urban Villages into future PROS Plan updates and PROS CIP budget processes.</u></p>	<p><u>Staff, City Council</u></p>	<p><u>Medium-term</u></p>
<p><b><u>10-8.2B</u></b></p> <p><u>Support the creation of village squares within designated Urban Villages and Neighborhood Villages as community focal points for recreation and cultural activities and events.</u></p>	<p><u>Incorporate consideration of implementing Urban Village and Neighborhood Village goals, specifically including the creation of village squares, into future PROS Plan updates and PROS CIP budget processes.</u></p>	<p><u>Staff, City Council</u></p>	<p><u>Medium-term</u></p>

Parks, Recreation, and Open Space Element

Policy	Implementation Strategies	Primary Responsibility	Time Frames
<b>Goal <a href="#">10-8.32</a> Preserve and Acquire Recreational Land</b>			
<p><b><a href="#">10-8.32A</a></b></p> <p>Continue City efforts to expand the PROS system so that all residents live within one-half mile of a community or neighborhood park, prioritizing the creation of new facilities and improvement of existing facilities in historically underserved areas.</p>	<p>Prioritize acquiring and developing the proposed Lake to Sound trail.</p>	<p>Staff, City Council</p>	<p>Ongoing</p>
	<p>Protect environmentally critical areas and classify as open space, where appropriate, including heavily forested scenic areas.</p>	<p>Staff, City Council</p>	<p>Ongoing</p>
	<p>Review and consider increasing incentives for public open space dedication in SeaTac’s Urban Center.</p>	<p>Planning Commission, City Council</p>	<p>Short-term</p>
	<p>Prioritize acquisitions that increase access for residents more than ½ mile from an existing park, recreation, or open space facility.</p>	<p>Staff</p>	<p>Ongoing</p>
	<p><a href="#">Consider realigning ½ mile access to parks goal to the more nationally recognized ¼ mile standard in next PROS Plan update.</a></p>	<p><a href="#">Staff, City Council</a></p>	<p><a href="#">Medium-term</a></p>
<p><b><a href="#">10-8.32B</a></b></p> <p>Prioritize the acquisition of new land for parks and recreation using the criteria noted in the policy language.</p>	<p>Apply priority criteria to all proposals for new parks and recreation facility acquisitions.</p>	<p>Staff, City Council</p>	<p>Ongoing</p>
<p><b><a href="#">10-8.32C</a></b></p> <p>Prioritize the expansion, redevelopment, or improvement of existing vacant or underutilized facilities using the criteria noted in the policy language.</p>	<p>Apply priority criteria to all proposals for expansion or redevelopment of parks and recreation facilities.</p>	<p>Staff, City Council</p>	<p>Ongoing</p>
<p><b><a href="#">10-8.32D</a></b></p> <p>Identify lands appropriate for park and open space purposes.</p>	<p>Develop a long-range plan that identifies desirable areas for future park and trail location.</p>	<p>Staff, Planning Commission, City Council</p>	<p>Short-term</p>
	<p>Identify important urban open spaces in conjunction with new transportation development.</p>	<p>Planning Commission, City Council, Staff</p>	<p>Ongoing</p>
	<p>Discuss noise remedy land with the Port of Seattle regarding its appropriateness for use as parks or trails.</p>	<p>Staff</p>	<p>Ongoing</p>

## Parks, Recreation, and Open Space Element

Policy	Implementation Strategies	Primary Responsibility	Time Frames
	Prioritize acquisitions that increase access for residents more than ½ mile from an existing park, recreation, or open space facility.	Staff	Ongoing
<b>10-8.32E</b> Establish and require recreation and open space in new commercial and residential development, especially in new multifamily development.	Review and revise, as necessary, development regulations requiring open space or recreation space for new development as part of the required periodic Comprehensive Plan review and update.	Planning Commission, City Council	Ongoing
<b>Goal 10-8.43 Develop Parks and Recreation Facilities</b>			
<b>10-8.43A</b>	Inventory existing facilities and major user groups and identify deficiencies.	Staff	Short-term
Develop recreation facilities and programs that accommodate a range of ages, cultures, and activities.	Engage community organizations and school groups to help identify recreational demands and community needs.	Staff, City Council	Ongoing
	Continue to pursue partnerships that expand recreational opportunities through increased funding or shared facilities or programs (e.g., Highline School District).	Staff, City Council	Ongoing
<b>10-8.43B</b> Provide recreational opportunities that do not discriminate against any participant, regardless of race, creed, color, sex, or special need, and eliminate barriers to special populations, such as elderly, physically challenged, and economically disadvantaged people.	Improve access to all local parks per Americans with disabilities Act (ADA) requirements.	City Council	Ongoing
	Design all new parks to barrier-free standards.	Staff	Ongoing
	Supply transportation to senior citizen activities whenever possible.	City Council	Ongoing
	Provide free or low-cost programs; make programs requiring fees accessible to low income people through scholarships.	Staff	Ongoing
<b>10-8.43C</b> Develop and expand	Continue to request funding for human services needs through the Community Services Advisory Committee.	Staff	Ongoing

## Parks, Recreation, and Open Space Element

Policy	Implementation Strategies	Primary Responsibility	Time Frames
community-oriented enrichment programs and events that are affordable, responsive to expressed demands, and address identified community needs.	Partner with Highline schools to expand recreation opportunities for youth.		Ongoing
	Continue to offer low cost community-wide events such as dances and carnivals.	Staff, City Council	Ongoing
	Continue working with community groups to develop and improve citywide special events such as parades, festivals, holiday banners, juried art exhibits, and festive displays.	City Council, Staff	Ongoing
<b>10.8.43D</b> Bring innovative recreation opportunities to SeaTac that serve the community and distinguish the City from surrounding communities.	Identify opportunities for unique and diverse recreation in SeaTac through community input and changes in recreation demand and trends.	Staff	Ongoing
<b>10.8.43E</b> Provide opportunities to connect to health and human services resources through the parks and recreation system.	Maintain referral and resource lists for free and low-cost health and human services that can be distributed to those in need in parks and recreation facilities.	Staff	Ongoing
	Identify internal and external funding sources for open space/pedestrian pathways when appropriate and possible.	Staff, City Council	Ongoing
	Coordinate with adjacent cities and other relevant agencies to develop or expand connections to designated regional open space/pedestrian trails.	Staff, City Council	Ongoing
	Work with WSDOT regarding use of the SR 509 right-of-way for the Lakes to Sound trail.	Staff	Ongoing
<b>Goal 10.8.54 Redevelop and Maintain Facilities</b>			
<b>10.8.54A</b> Periodically review buildings and other park improvements to determine if the public's needs are being met and make changes as	Conduct a facility review at least once a year with park maintenance, programming, and planning personnel; document findings for project planning purposes.	Staff	Ongoing
	Utilize the Repair and Replacement fund to maintain parks and facilities.	Staff	Ongoing

Parks, Recreation, and Open Space Element

Policy	Implementation Strategies	Primary Responsibility	Time Frames
necessary to meet those needs efficiently.			
<p><b>10.8.54B</b></p> <p>Design, maintain, and modify parks and recreational facilities in a manner that ensures the public’s safety and accessibility, allows year round use, and results in low public maintenance costs when possible.</p>	Conduct periodic meetings to coordinate and exchange information with various city departments and personnel (planning, programming, and maintenance).	Staff	Ongoing
	Follow established safety standards when designing new children’s play areas in local parks.	Staff	Ongoing
	Evaluate low maintenance techniques and use where appropriate.	Staff	Ongoing
	Review past safety records of parks prior to new development or renovation planning.	Staff	Ongoing
<p><b>10.8.54C</b></p> <p>Provide clean, safe, and attractive parks for public use through a maintenance program commensurate with the intensity of use and character of the park and facilities.</p>	Develop and publish a maintenance plan that prevents degradation of park facilities while allowing for normal usage.	Staff	Short-term
	Continue to use the Repair and Re-placement fund to keep parks and facilities in top condition.	Staff	Ongoing
<p><b>10.8.54D</b></p> <p>Encourage volunteer and civic groups to take part in appropriate periodic maintenance and improvement of park facilities.</p>	Staff periodic volunteer work days.	Staff	Ongoing
	Develop an Adopt-A-Park program.	Staff, City Council	Short-term
	Continue to work with groups (e.g., Highline SeaTac Botanical Garden, disc golf, and BMX groups) to maintain their areas.	Staff	Ongoing
<p><b>10.8.54E</b></p> <p>Minimize parks and recreational facilities’ impacts (e.g., noise, security, lighting, and traffic) on adjacent neighborhoods.</p>	Close parks at a reasonable hour to discourage misuse and excessive evening noise.	City Council	Ongoing

Goal **10.8.65** Ensure Safe and Convenient Access

Parks, Recreation, and Open Space Element

Policy	Implementation Strategies	Primary Responsibility	Time Frames
<p><b>10.8.65A</b></p> <p>Locate major recreational facilities that generate large amounts of traffic (e.g., ballfields) on sites with public transit and direct arterial street access.</p>	<p>Coordinate the location of planned facilities with bicycle and pedestrian routes, transit stops, and vehicle access.</p>	<p>City Council</p>	<p>Ongoing</p>
<p><b>10.8.65B</b></p> <p>Promote uniform signage and lighting throughout the City’s system of parks, open space, and trails.</p>	<p>Design lighting and signage to improve safety and wayfinding in parks.</p>	<p>Staff</p>	<p>Ongoing</p>
<p><b>10.8.65C</b></p> <p>Improve access to SeaTac parks and recreation facilities by using signage to provide wayfinding from other civic locations.</p>	<p>Design lighting and signage to improve wayfinding and access to parks.</p>	<p>Staff</p>	<p>Ongoing</p>
<p><b>10.8.65D</b></p> <p>Coordinate parks, open space, pedestrian walkways, bike paths, and urban trail system development with the area’s unique open space settings including wetlands, creeks, greenbelts, and other environmentally sensitive or historic sites.</p>	<p>Overlay the long-range park plan, including trails, with a map showing the area’s unique features such as wetlands, creeks, and other environmentally sensitive or historic sites. evaluate access to these resources, and document for future park plan revisions.</p>	<p>Staff</p>	<p>Short-term</p>
	<p>Work with WSDOT regarding use of the SR 509 right-of-way for the Lakes to Sound trail.</p>	<p>Staff</p>	<p>Ongoing</p>
<p><b>Goal 10.8.75 Promote Intergovernmental Coordination</b></p>			
<p><b>10.8.76A</b></p> <p>Collaborate with agencies, special districts, and other Cities to develop and utilize the</p>	<p>Seek private and public sponsorship for special parks, recreation, and cultural programs.</p>	<p>Staff</p>	<p>Short-term</p>
	<p>Participate in regional planning efforts that might affect local residents, even if projects are outside the city.</p>	<p>Staff, City Council</p>	<p>Ongoing</p>
	<p>Seek partnerships with community groups for tree planting programs and other park and open space improvements.</p>	<p>Staff</p>	<p>Ongoing</p>

Parks, Recreation, and Open Space Element

Policy	Implementation Strategies	Primary Responsibility	Time Frames
community’s recreational capabilities.	Encourage easements on public or private lands for recreation.	Staff, City Council	Ongoing
	Schedule programs annually from the YMCA.	Staff, City Council	Ongoing
<p><b>10-8.76B</b></p> <p>Work with local school districts to maximize the use of school facilities as activity and recreation centers for all ages.</p>	Continue to use school sites for recreation and after-school programs.	Staff	Ongoing
	Review an interlocal agreement biannually that allows the city to use school facilities at no cost in exchange for school use of city facilities at no cost.	City Council, Staff	Short-term
	Encourage the school district to improve and maintain athletic fields for Little League and other uses.	City Council	Ongoing
<p><b>10-8.76C</b></p> <p>Encourage cooperative planning and use of recreational facilities with private businesses, nonprofit organizations, and other groups in the City.</p>	Build relationships with partner organizations and explore possibilities for shared recreational facilities. where possible, provide joint spaces and/or programs.	Staff	Ongoing
<p><b>10-8.76D</b></p> <p>Pursue a variety of funding and assistance mechanisms for park acquisition and development, including public funding, outside funding, shared use of transportation rights-of-way, and dedications from large residential and commercial developments.</p>	Apply for grants	Staff	Ongoing
	Coordinate with transportation entities to encourage multiple uses of public rights-of-way.	Staff	Ongoing
	Maintain grant and volunteer records of prior investment and potential funding sources to aid the city budgeting process.	Staff	Short-term
	Encourage volunteer programs and events.	Staff	Ongoing
	Prioritize grant applications to sources that require minimal local matching funds or maximize value while meeting the local identified need.	Staff	Ongoing
	Review and consider increasing public open space incentives and/ or requirements for urban development.	Planning Commission, City Council	Short-term
<p><b>10-8.76E</b></p> <p>Involve private</p>	Identify opportunities for contributions by contacting potential donors and discussing specific needs and services.	Staff, City Council	Short-term



## Parks, Recreation, and Open Space Element

Policy	Implementation Strategies	Primary Responsibility	Time Frames
businesses, service organizations, and neighborhood groups in planning and developing recreational opportunities for neighborhoods and the community.	Work with the Rotary club, the Chamber of Commerce, Angle Lake Shore club, and other organizations on the international festival and the July 4th celebration.	Staff	Ongoing
	Work with the YMCA to offer joint recreation opportunities for SeaTac residents.	Staff	Ongoing
<b>Goal 10-8.73 Develop Community-Wide Resources</b>			
<b>10-8.87A</b> Develop North SeaTac Park in accordance with the North SeaTac Park Master Plan and Airport land use and safety guidelines.	Prohibit facilities in North SeaTac Park that attract large numbers of people.	City Council	Ongoing
	Examine possible active recreation- al facilities, specifically new athletic fields, to the area north of South 136th Street.	City Council	Ongoing
<b>10-8.87B</b> Preserve the area surrounding Tub Lake as a natural wetland and increase opportunities for public enjoyment of the area.	Install boardwalks and interpretive information at Tub Lake.	City Council	Short-term
<b>10-8.87C</b> Develop environmentally sensitive public trails connecting the Lakes to Sound Trail to SeaTac Community Center and natural features such as Tub Lake and adjacent wetlands.	Work with the Port of Seattle to establish an access plan to connect the Lakes to Sound trail to the SeaTac community center with access through the Tub Lake natural area.	Staff	Short-term
<b>10-8.87D</b> Preserve the Des Moines Creek area and extend the Des Moines Creek Trail north to Miller Creek and North SeaTac Park with connections to the Lakes to Sound Trail.	Complete a Master Plan for Des Moines Creek Park. the Master Plan should, at a minimum, address pre- serving the character and wildlife habitat, and allow for interpretive opportunities and linkage to regional trails.	Staff, City Council	Short-term
	Coordinate with SR 509 and 24th/28th Avenue transportation planning to integrate parks needs.	Staff	Ongoing

## Parks, Recreation, and Open Space Element

Policy	Implementation Strategies	Primary Responsibility	Time Frames
<p><a href="#">10-8.87E</a></p> <p>Work with the Washington State Department of Transportation (WSDOT) on land south of S. 200th Street as open space for the enjoyment of local residents and prohibit vehicular traffic from these open space areas.</p>	Discuss opportunities with the Port to provide open space.	City Council	Ongoing
	Work with the Port to dedicate Port-owned land for open space and recreational uses, including trails identified on the pedestrian facilities map.	City Council	Medium-term
<p><a href="#">10-8.87F</a></p> <p>Seek public access to waterfront area(s) of Bow Lake.</p>	Initiate discussions with private property owners about the purchase of adjacent lands and negotiate conservation easements as possible.	Staff, City Council	Long-term
	Update development regulations to enable incentives to provide public access with urban center redevelopment.	Planning Commission, Staff, City Council	Long-term
	Revisit and update the June 2000 Bow Lake Joint Use Facilities Study before proceeding with implementation of a boardwalk, viewing areas or pedestrian trails.  Prioritize development of publicly owned properties.	Planning Commission, Staff, City Council	Medium-term
<p><a href="#">10-8.87G</a></p> <p>Retain significant historical and archaeological resources.</p>	Inventory historical and archaeological structures and sites.	Staff	Short-term
	Revise the zoning code to include standards for the retention of historical and archaeological resources identified by the City's inventory cited above.	Planning Commission, Staff, City Council	Short-term