



WELCOME

We're glad you're here!

Envision SeaTac 2044 and SeaTac Transportation Master Plan

Planning Our City Together

North SeaTac Community Meeting:
Community Center
August 21, 2024



PRESENTATION OVERVIEW

- **Introduction to Envision SeaTac 2044**
 - **Why and When—Purpose of Updating the Comprehensive Plan; Timeline**
 - **Vision for SeaTac**
 - **Growth Strategies**
 - **Do you live in a “Complete Neighborhood”?**
- **Introduction to the SeaTac Transportation Master Plan**
- **How You Can Participate This Evening**



ENVISION SEATAC 2044

Welcome to the Community Planning Open House

Envision SeaTac 2044 & Transportation Master Plan

Do you need interpretation services?

We can help with Amharic, Somali, and Spanish interpretation services - please ask City staff and we will assist you.

Tonight's Agenda

Open House

Feel free to walk around, learn about the City's proposals, share your opinions, and leave at any time.

Two Brief Presentations

Two short presentations about Envision and Transportation Master Plan Projects (with the same information) will be given at:

- 6:15-6:25pm
- 7:15-7:25pm



About Envision SeaTac 2044 Project

Goal

Update growth and development policies in the City's Comprehensive Plan for the next 20 years.

Why?

- Update required by state Growth Management Act for years 2024 - 2044
- Allows new City priorities and information to be included since last major update in 2015.
- Cities in the Puget Sound region must align with new state, regional, and county growth policies **by the end of 2024.**



Key Themes & Objectives for Policy Updates

- Increase Wellbeing and Access to Opportunity
- Grow Urban Villages near Light Rail
- Healthy, Equitable, Connected, & Complete Neighborhoods
- Connected, Multimodal Transportation
- Housing for All
- Economic Opportunity and Vitality
- Resilient Built and Natural Environments

Project Schedule & Anticipated Next Steps

2023

- **Fall - Winter:** Project Kick-off and City Vision Poll

2024

- **Winter - Summer:** Policy development with Planning Commission and input from other projects
- **Summer:** Community Planning Meetings
- **Fall:** Public Review Draft of all proposals available
 - **October:** Public Hearing
 - **November:** City Council reviews.
 - **December:** City Council adoption process.

Envision Project Background: What is the Comprehensive Plan?

How much growth is coming to SeaTac by 2044?

TARGETS FOR ENVISION 2044 PROJECT TO ADDRESS (2019 - 2044)	2019 (approx.)	2044 (approx.)	GROWTH TARGET (jobs / housing needed to achieve target)
Jobs	36,523	51,333	+14,810
Housing Units	10,855	16,755	+5,900

SeaTac's Comprehensive Plan Manages the City's Growth.

The Washington State Growth Management Act requires cities to adopt Comprehensive Plans to manage population growth and development over a 20-year period.

- Major updates of the Plan are required every ten years.
- SeaTac must complete this major update by December 2024.

It is the City's roadmap for how we will grow and develop.

Goals and policies are implemented through budgets, regulations, programs, and projects.



Proposed City Vision Statement

The vision statement describes overall community goals for what SeaTac should be like in 20 years.

Envision SeaTac 2044

The City of SeaTac will be a people-oriented, multicultural place with well-connected, complete neighborhoods. Economically vibrant, environmentally sensitive, visually pleasing, socially diverse, SeaTac will convey a positive identity and strong sense of place, as a livable, equitable, and sustainable city of the future.

There will be expanded access to opportunities for all people living, working, and doing business in the community, as well as those who come to visit. The strength of SeaTac's collective spirit will be found in those who call SeaTac home and within the entrepreneurs working hard to support thriving businesses and start new ones.

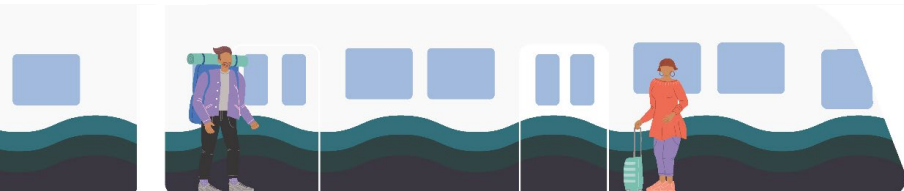
As an international hub of hospitality, visitors traveling through SeaTac International Airport will enjoy premier destination opportunities. Residents and visitors alike will enjoy great parks and recreation activities.

SeaTac's transportation network, park and recreation facilities, utility systems and other public and private facilities, as well as the natural environmental setting will be designed and maintained to enhance the quality of life and enrich the spirit of this strong community.

By 2044,

- **Urban villages** along the International Boulevard corridor, will anchor SeaTac's Urban Center and provide vibrant, higher density business and residential districts adjacent to the light rail stations where most job and housing growth will be concentrated and there are a variety of amenities and activities.
- **Neighborhood villages** will emerge outside of the Urban Center as important community hubs where people can easily walk to work, schools, parks, and daily services.
- **Corner stores** will provide new opportunities for entrepreneurship and local businesses, while providing access to daily goods and services in walking distance of people's homes.
- **Flexible, warehouse, industrial districts** will provide new jobs and economic opportunities that support the airport and other regional commerce activities.

The City of SeaTac will be known as a place where all are welcome to grow and thrive.



Proposed Growth Strategies 2024 - 2044

Two Key Strategies:

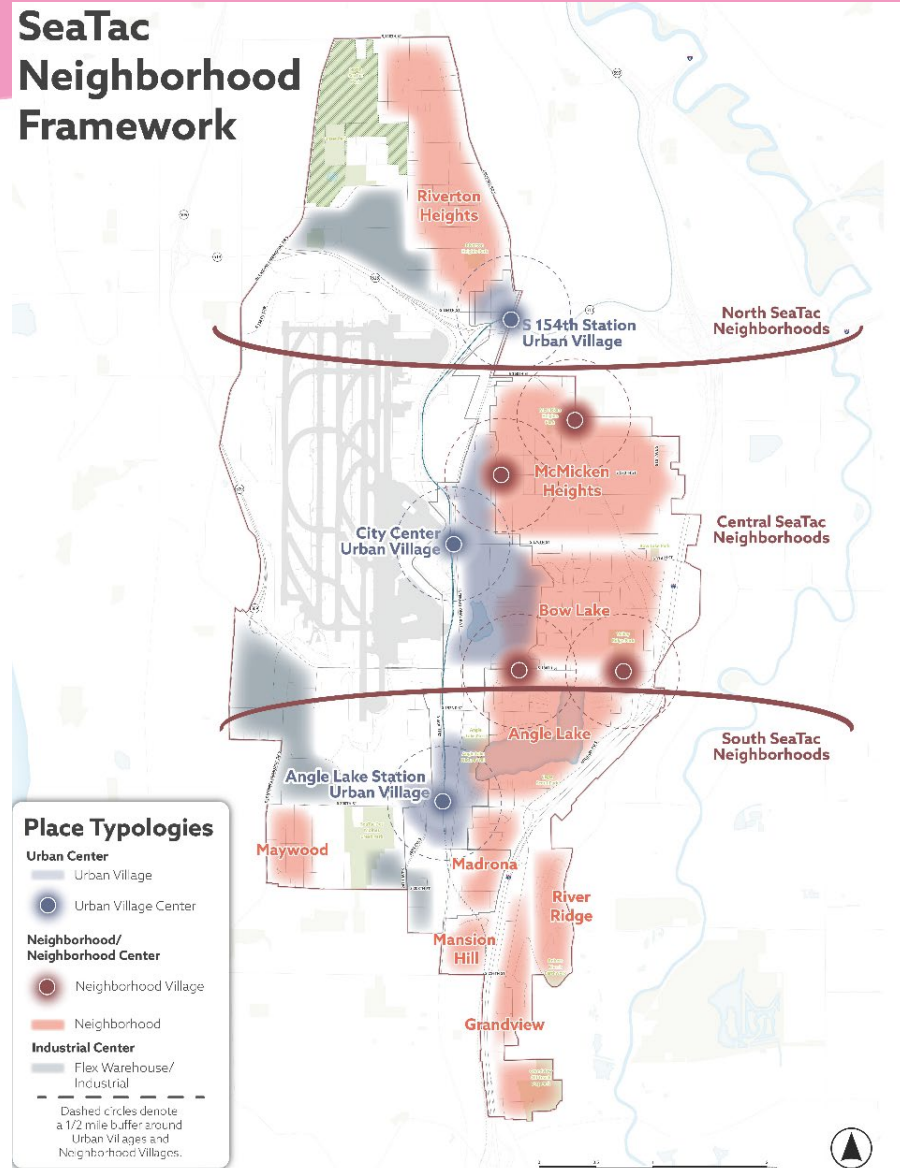
1. Focus Growth in Centers

Use population and job growth to create centers for local communities and businesses that provide increased opportunities for jobs, housing, services, and amenities: Urban Villages, Neighborhood Villages, Corner Stores, and Flex Warehouse/Industrial Areas.

2. Create Complete Neighborhoods

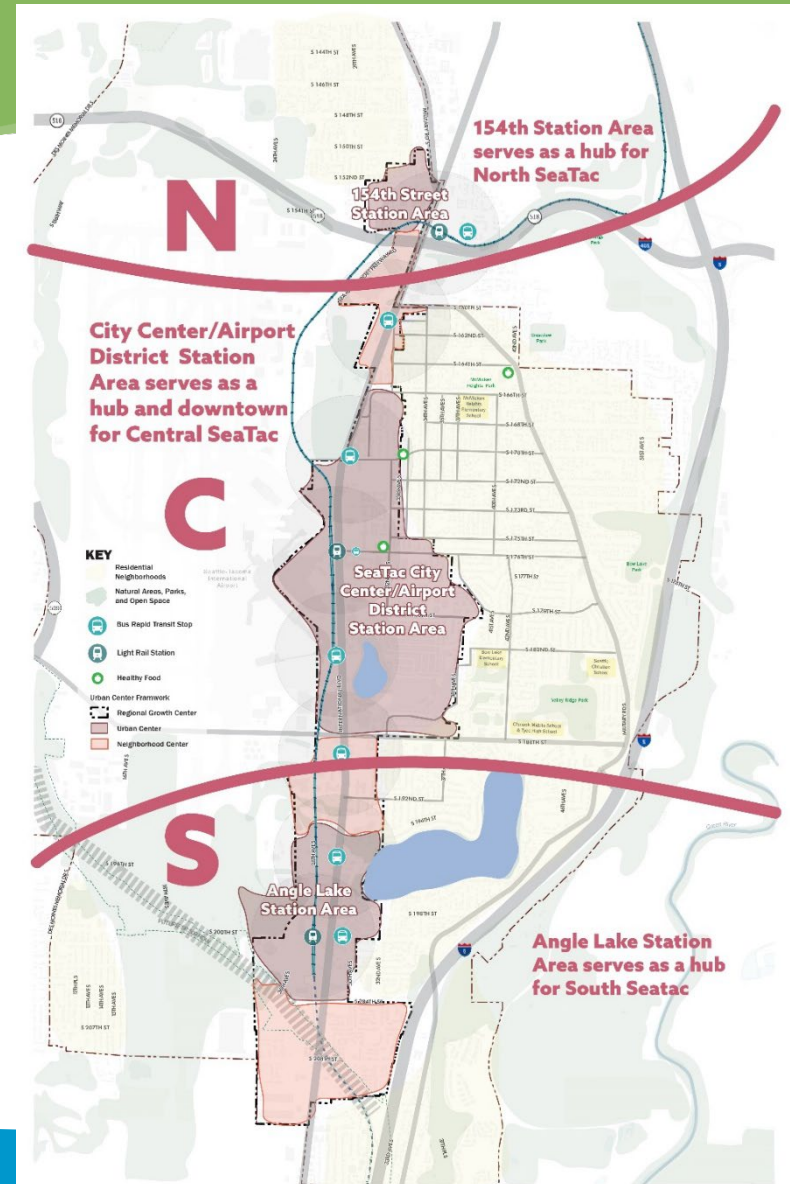
Support new growth with complete neighborhood infrastructure and services to ensure a high quality of life for residents and an attractive economic environment for businesses.

SeaTac Neighborhood Framework



City Center/Airport District Subarea Plan

- Will follow in line with growth strategy of the Envision SeaTac 2044 Comprehensive Plan.
- Ongoing analysis of existing conditions, gaps, needs, market potential, and other factors in process.
- Next steps: development of specific ideas and concepts.



Proposed Rezones to Support New City Vision

Why is the City proposing zoning changes?

- Citywide rezones were identified as part of the Envision SeaTac 2044 project by City Council in January 2024.
- Zoning changes are needed to implement new City vision and growth strategies.
- State Growth Management Act (GMA) requires zoning to be consistent with Comprehensive Plans.

What changes are proposed?

- New zones that implement new growth strategies for creating Urban Villages and Neighborhood Villages.
- Citywide rezones so zoning of parcels match land use designations on the Comprehensive Plan Land Use Map.



Complete Neighborhoods

Proposed: Clarify and strengthen existing Complete Neighborhoods policies

Ensure new housing and job growth is supported by sufficient infrastructure and services.

- Create healthy, equitable, connected, and complete neighborhoods.
- Maintain a high quality of life for current and future city residents.

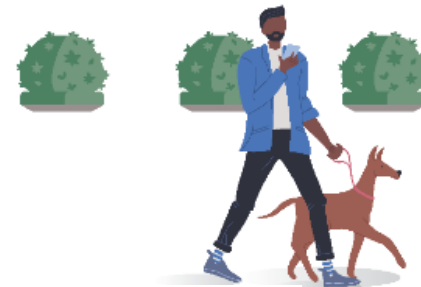
Develop Complete Neighborhoods that provide 1/2 mile walkable access to:

- **Diverse, Affordable Housing:** Varied housing types attainable for residents of all income levels.
- **Neighborhood Services:** Resident-oriented businesses and daily needs services.
- **Healthy Food:** Grocery stores, healthy food shops, farmers markets, community gardens.
- **Community & Neighborhood Parks:** Multi-purpose parks for all ages and abilities.
- **Transportation Choices:** Connected street networks and walking, bicycling, and transit.

In Urban villages & higher density residential areas, provide 1/4 mile access as possible to serve larger, denser populations

Do You Live in a Complete Neighborhood?

What do you think of the Complete Neighborhood policies?



North SeaTac Complete Neighborhoods

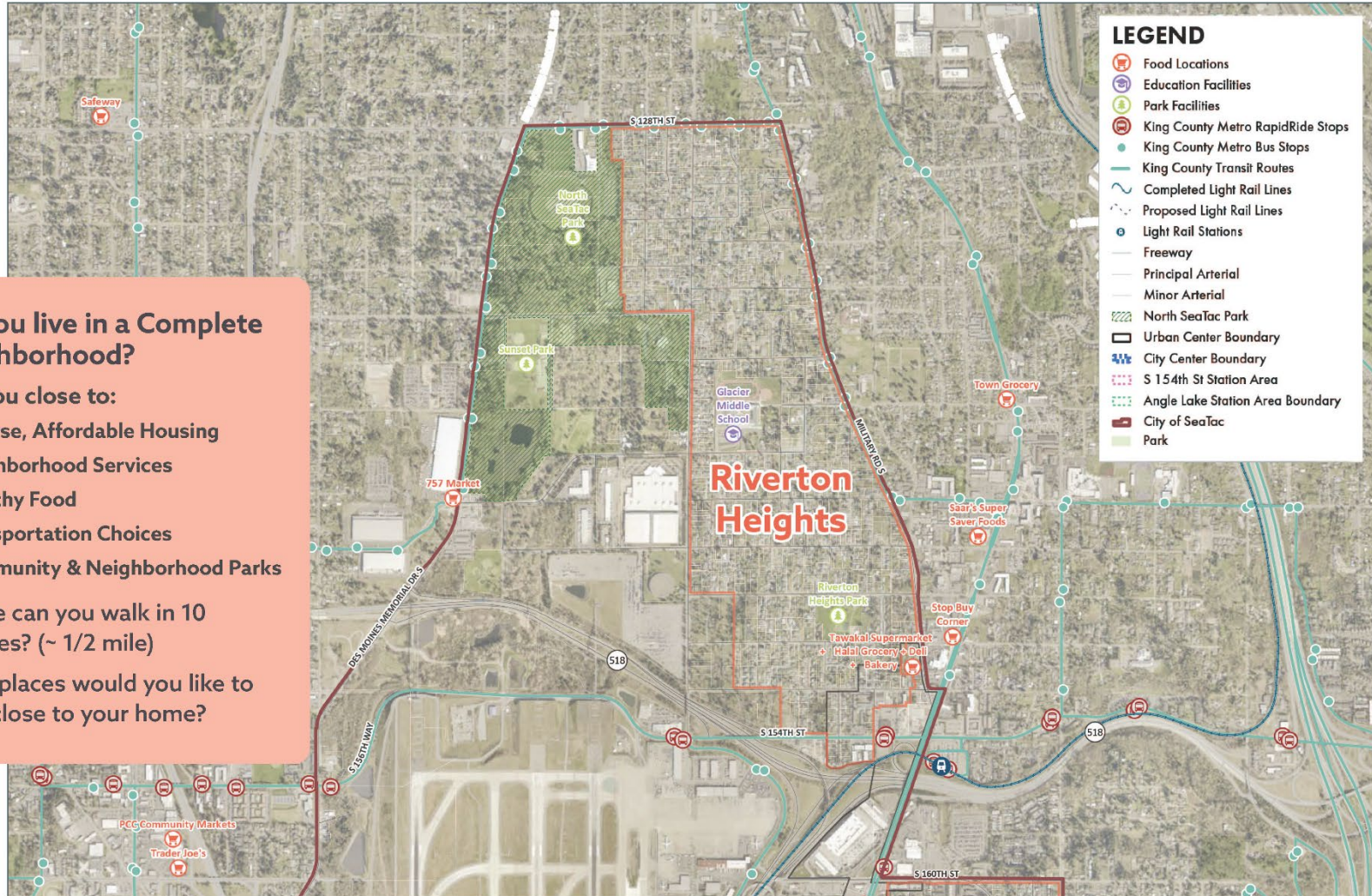
Do you live in a Complete Neighborhood?

Are you close to:

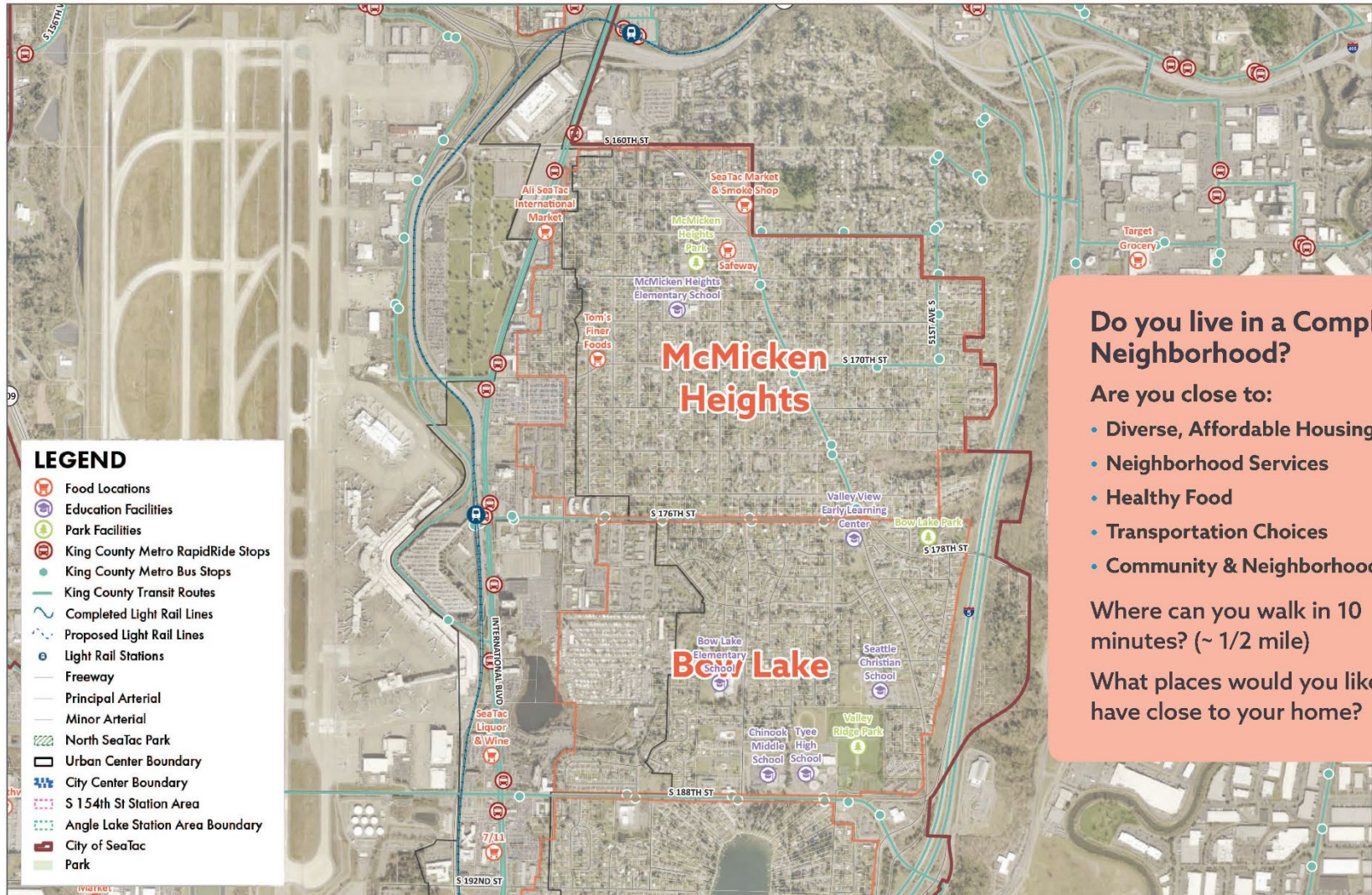
- Diverse, Affordable Housing
- Neighborhood Services
- Healthy Food
- Transportation Choices
- Community & Neighborhood Parks

Where can you walk in 10 minutes? (~ 1/2 mile)

What places would you like to have close to your home?



Central SeaTac Neighborhood Area



Do you live in a Complete Neighborhood?

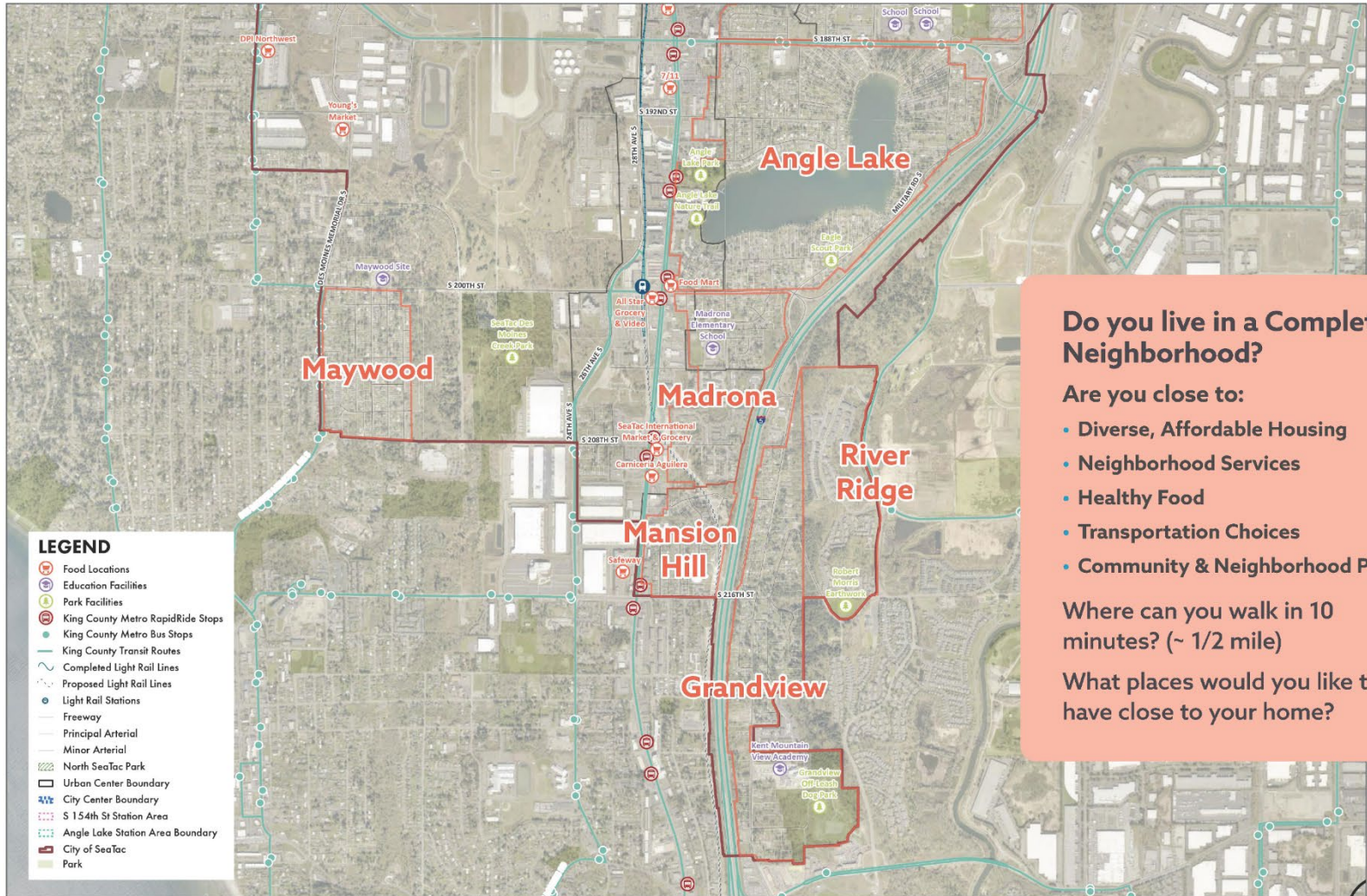
Are you close to:

- Diverse, Affordable Housing
- Neighborhood Services
- Healthy Food
- Transportation Choices
- Community & Neighborhood Parks

Where can you walk in 10 minutes? (~ 1/2 mile)

What places would you like to have close to your home?

South SeaTac Complete Neighborhoods



Do you live in a Complete Neighborhood?

Are you close to:

- Diverse, Affordable Housing
- Neighborhood Services
- Healthy Food
- Transportation Choices
- Community & Neighborhood Parks

Where can you walk in 10 minutes? (~ 1/2 mile)

What places would you like to have close to your home?

**SEATAC
TRANSPORTATION
MASTER PLAN**

2024 Transportation Element Update

What is the purpose of the Transportation Element?

- It outlines the overarching goals and policies to guide investments in the transportation system.
 - Includes operations, preservation, safety and multimodal capital improvements
- It supports the overall vision of the Comprehensive Plan including the creation of Complete Neighborhoods
 - Access to Transportation Choices
 - Access to Housing
 - Access to Healthy Goods
 - Access to Neighborhood Services
 - Access to Parks and Open Space



2024 Transportation Master Plan Update

What is the purpose of the Transportation Master Plan (TMP)?

- It provides the background to support the Transportation Element
 - Details existing conditions and forecasted future conditions for all modes in 2044
 - Develops modal system plans (e.g., bike system network, pedestrian system network, freight corridors, etc.)
 - Describes project list for transportation investment for the next 20 years



Transportation Element Goals for Tonight

We're here to inform!

- Provide background and context for Transportation Element and Transportation Master Plan
- Share existing plans for roadway, pedestrian and bicycle improvements

We're here for feedback!

- Take our survey
- Tell us where connections are missing to support Complete Neighborhoods?



**HOW TO
PARTICIPATE
THIS EVENING**

HOW TO PARTICIPATE

1. Visit all the stations and learn about what is proposed.
2. Provide your comments and suggestions!
 - Put dots and post-it notes on boards and maps.
 - Leave your comments on comment forms.
 - Talk to the planning team.



**THANK YOU FOR
YOUR PARTICIPATION
and helping to shape your
City for the next 20 years!**