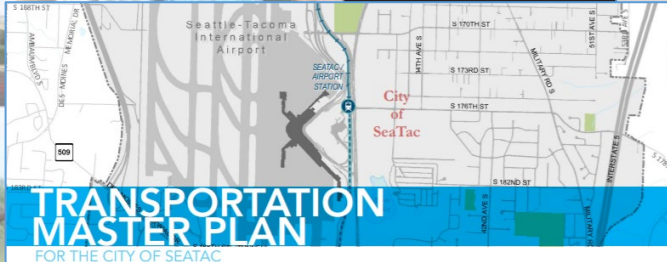




SEATAC COMPREHENSIVE PLAN ELEMENTS

VOLUME
1



Planning Our City Together

Project Updates:

- **Envision SeaTac 2044 Project Public Participation Plan**
- **Integrating Equity into the Planning Our City Together Projects**

Planning Commission
10/17/2023



PRESENTATION OVERVIEW

PURPOSE OF PRESENTATION

To provide an update on major planning projects now underway:

Planning Our City Together Projects

- Envision SeaTac 2044 Comprehensive Plan Update
- Transportation Master Plan (TMP) Update
- City Center/Airport District Subarea Plan Project

WHY IS THIS ISSUE IMPORTANT?

1. The **Planning Our City Together** projects will reset SeaTac's growth and development policies for the next twenty years.
2. Project briefings are intended as opportunities to both inform and facilitate input from the Commission on project activities.



POTENTIAL COMMISSION ACTION

NO ACTION REQUESTED: This is an informational briefing.

REVIEWS TO DATE:

- **City Center/Airport District Subarea Plan Project:** 3/15/2022, 3/7/2023, 5/2/2023, 6/20/2023, 7/18/2023, 8/15/2023, 9/19/2023
- **Envision SeaTac 2044: Major Comprehensive Plan Update Project:** 9/20/2022, 8/15/2023, 9/19/2023

Envision SeaTac 2044

Planning Our City Together

Updated, October 10, 2023

Public Participation Plan

A Community Engagement Guide for the Envision SeaTac 2044 Comprehensive Plan and Transportation Master Plan Update Projects



Public Participation Plan



WHY HAVE A PUBLIC PARTICIPATION PLAN?

Engagement of the public supports development of plans that are:

- Responsive to public interests and needs;
- Aligned with the community's vision; and
- A reflection of the community.

A Public Participation Plan guides engagement activities to ensure full and diverse community participation.

The Washington State Growth Management Act

RCW 36.70A. 140: Requires that cities establish a public participation program to guide early and continuous public participation in the development of comprehensive plans.



ENVISION SEATAC 2044 PUBLIC PARTICIPATION PLAN

The Envision SeaTac 2044 Public Participation Plan includes the Transportation Master Plan (TMP) Update Engagement Process.

PLAN ORGANIZATION & CONTENT

- 1) Introduction & Purpose
- 2) Envision SeaTac 2044 Background
- 3) Key Themes and Overarching Goals for Engagement
- 4) Engagement Best Practices
- 5) Who Will Be Engaged
- 6) Communication and Engagement Methods and Tools
- 7) Envision SeaTac 2044 Multi-Phase Community Engagement Process

Engagement will be robust, inclusive and continuous!



COMMUNITY ENGAGEMENT BEST PRACTICES AND GOALS

Best Practices:

- Facilitate an open, inviting, and transparent process.
- Ensure engagement is equitable and inclusive.
- Include multiple options for engaging the full community (online, in person, targeted engagement, etc.).
- Align with Puget Sound Regional Council (PSRC) and Washington State guidance.

Key Goals:

- Provide opportunities and forums for engaging the full diversity of interests in the community so all voices can be heard.
- Design engagement and input processes that focus on traditionally under-represented communities.
- Offer a variety of opportunities for gathering input, in a variety of ways, and using a variety of methods.



GATHERING COMMUNITY INPUT ON KEY PROJECT THEMES

Envision SeaTac 2044 Key Project Themes

- Wellbeing and Access to Opportunity
- Growing Urban Villages
- Strong Neighborhoods and Healthy, Equitable, Connected, and Complete Communities
- Multimodal Transportation
- Housing for All
- Economic Vitality
- Resilient Built and Natural Environments



WHO WILL BE ENGAGED IN SEATAC?

Residents

- Owners and renters; People experiencing housing cost burden; Seniors; Families/multigenerational families; Youth; People of color impacted by historic lending practices (i.e., redlining), displacement pressures, and/or biases; People with disabilities and other special needs; Immigrants; People experiencing homelessness (unhoused) and in shelters

Community & Business Stakeholders

- School District representatives, PTOs (parent-teacher organizations)
- Public and social service providers, faith-based organizations and community service organizations/community-based organizations (CBOs)
- Members of the business community, including airport-related businesses and others
- Small businesses and businesses that could be at risk of displacement, including small business owners/representatives/landlords/developers; Local workers
- Regional housing organizations, private and non-profit developers
- Major property owners and agencies, including the Port of Seattle, Sound Transit, WSDOT, King County Housing Authority, and others
- Transit and transportation service providers, Utilities service providers



COMMUNICATION AND ENGAGEMENT METHODS AND TOOLS

Multiple and Varied Methods and Tools: A Menu of Options

- **Regular Communications**
 - **Online:** Project webpage, City Blog, social media, interested parties list/project email
 - **Print:** Project mailings
- **Place-Based Outreach:** Going to where people live/work/play; tabling and pop-ups at events
- **Virtual or In-Person:** Interviews, focus groups, and listening sessions, also large and small meetings and workshop sessions
- **Community Liaisons:** Community contacts who can help us reach traditionally under-represented people in the community
- **Digital Engagement:** Online surveys, snap polls, GIS based storymaps, and/or other online tools
- **Planning Commission as the Project's Community Advisory Group**

Translation and interpretations services will be provided as needed.



COMMUNITY ENGAGEMENT APPROACH: PROJECT PHASES AND “COMMUNITY CONVERSATIONS”

Topics are organized to facilitate public input on key project themes and specific Comprehensive Plan Elements (chapters).

Phase	Community Conversation Topics	Timeframe
Phase 1	Community Vision and Priorities for SeaTac’s Future	In Process
Phase 2	Where and How Will SeaTac Grow Over the Next 20 Years: Urban Villages and Complete Communities	Fall/Winter 2023
Phase 3	Housing, Human Services, and Economic Development to Support SeaTac’s Future	Winter 2024
Phase 4	SeaTac’s Future Transportation and Parks & Recreation Systems	Spring 2024
Phase 5	Resilient Built and Natural Environments for SeaTac’s Future	Spring/Summer 2024
Phase 6	Draft and Final SeaTac 2044 Plan	Summer/Fall 2024

The Public Participation Plan is a LIVING DOCUMENT that may be adjusted to address needs and opportunities that arise during the planning process.



Integrating Equity into SeaTac's Planning Our City Together Projects



INTEGRATING EQUITY INTO SEATAC'S PLANNING OUR CITY TOGETHER PROJECTS

Summary of Envision SeaTac 2044 Project's Equity Goals:

(From project scope of work reviewed by PED 3/23/2023)

- **Equitable Community Engagement**—Ensure representative, inclusive, equitable community engagement throughout the project.

- **Equitable Policy Development**—Identify equity framework to:
 - Increase access to opportunity and well being
 - Create healthy, equitable, connected, complete communities

- **Equity Index**—Create equity analysis tool to better understand geographic relationships and opportunities related to equity.

REGIONAL GUIDANCE ON INTEGRATING EQUITY INTO COMPREHENSIVE PLAN UPDATE PROCESSES

State Department of Commerce:

- HB 1220 (2021) requires cities to plan for housing affordable to all income levels.
- Must identify, address, and undo racially disparate impacts, displacement, and exclusion in housing.

Puget Sound Regional Council (PSRC):

- Vision 2050 multi-county planning policies require equitable community engagement, advancing racial equity through planning processes, and mitigating and addressing displacement.

King County Countywide Planning Policies (CPPS):

- Guiding principle is centering social equity and health.

USING PSRC GUIDANCE ON EQUITY AS A STARTING POINT: DEFINITION OF EQUITY



The region's vision for equity...

All people have the means to attain the resources and opportunities that improve their quality of life and enable them to reach full potential. Differences in life outcomes cannot be predicted by race, class, or any other identity. Communities of color, historically marginalized communities, and those affected by poverty are engaged in decision-making processes, planning, and policy-making.

PSRC BACKGROUND ON EQUITY IN THE REGION: RACIAL DIVERSITY

Increasing Diversity

People of color represent:

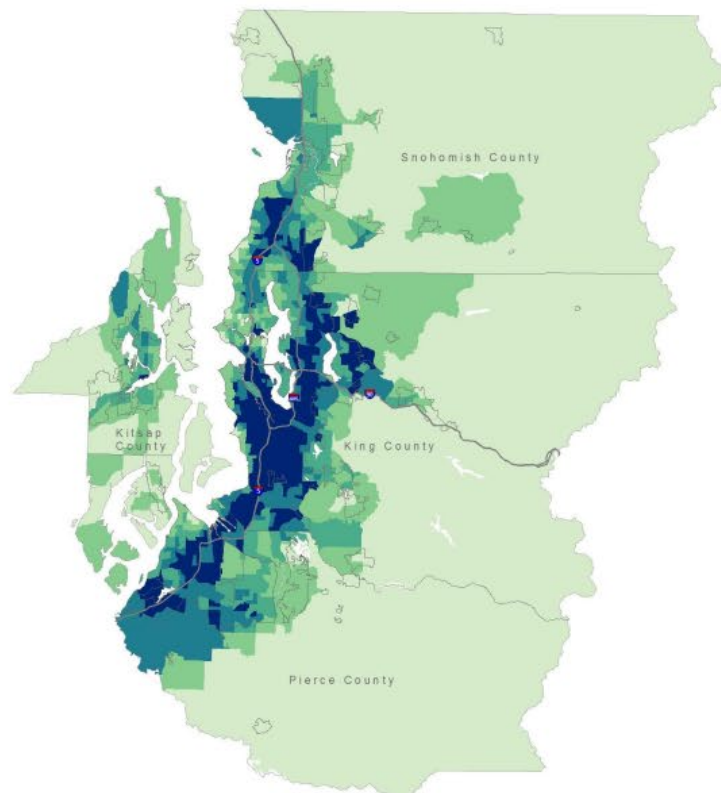
24% of region's population in 2000

31% of region's population in 2010

41% of region's population in 2021

84% of region's growth since 2000

15 cities at 50%+ people of color in 2019



Population by Race and Hispanic/Latinx Origin: 2020

Source: American Community Survey, 2010-2019 5-Year Estimates

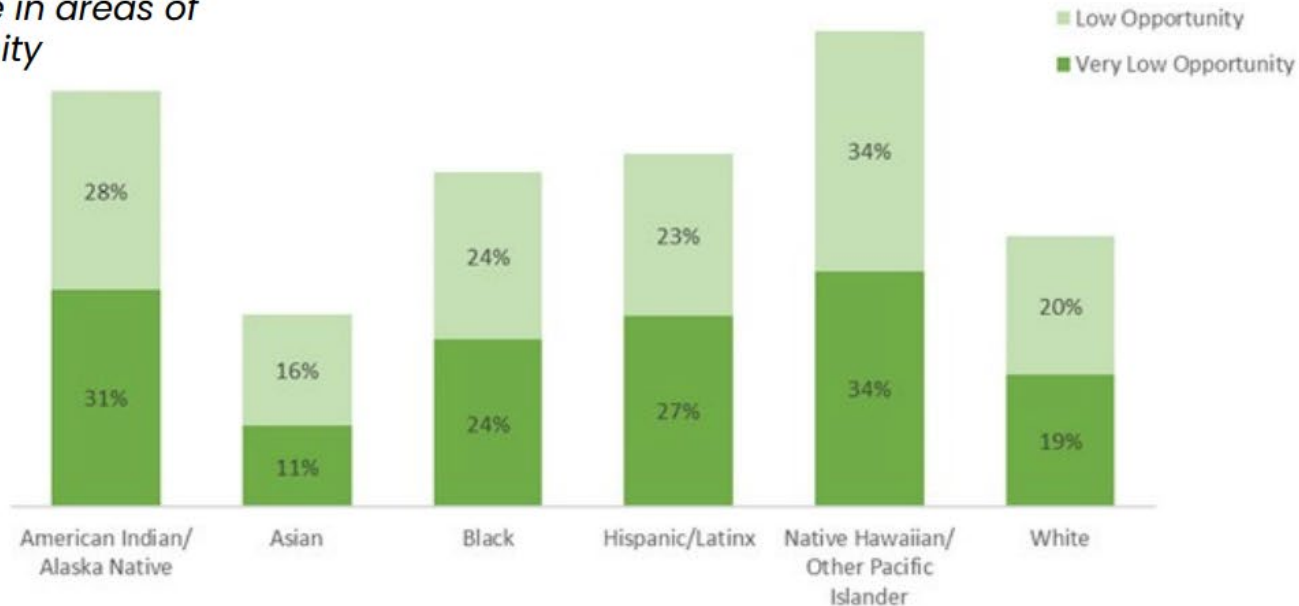


PSRC BACKGROUND ON EQUITY IN THE REGION: AREAS OF LOW OPPORTUNITY IN REGION BY RACE & ETHNICITY

Opportunity Mapping

Population in Areas of Lower Opportunity by Race and Ethnicity

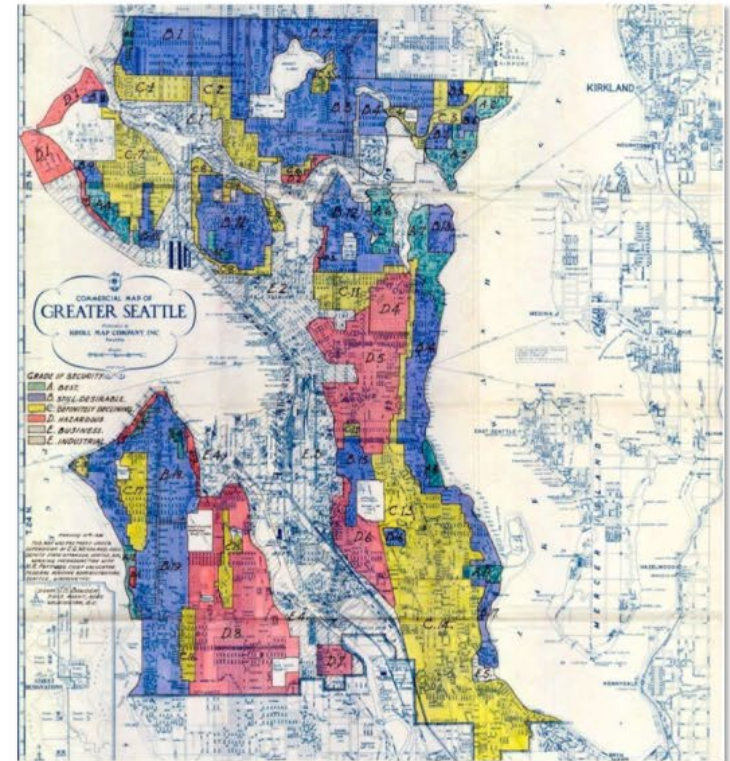
Almost 6 out of 10 AIAN households live in areas of lower opportunity



PSRC BACKGROUND ON HISTORY OF RACE AND DEVELOPMENT IN REGION

Why Lead with Race?

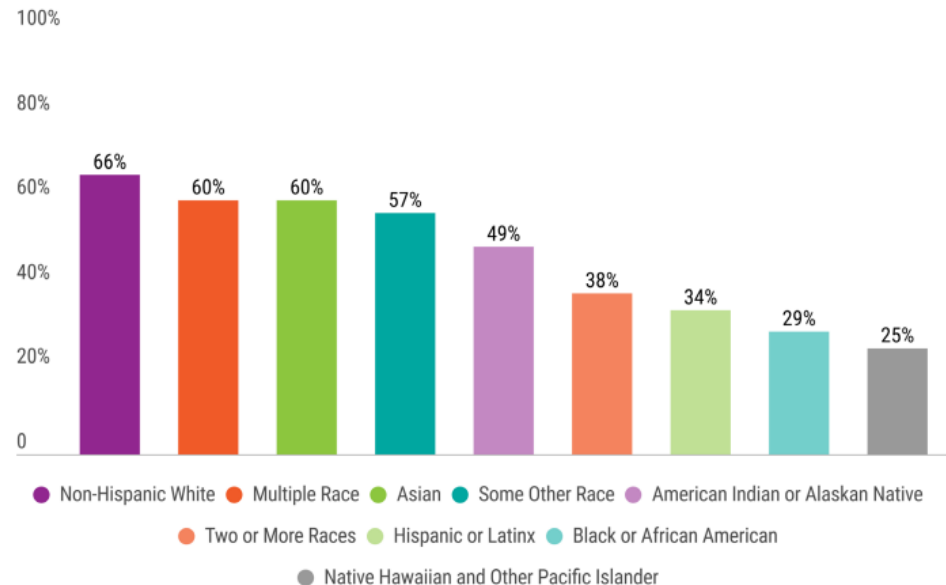
- Attempts to be race-neutral only led to continued barriers for communities of color
- Planning and policies have played a role in creating and perpetuating these barriers
 - *Donation Land Claims Act*
 - *Redlining*
 - *Restrictive Covenants*
 - *Urban Renewal*
 - *Single-Family Zoning*



PSRC: REGIONAL HOME OWNERSHIP RATES

Home Ownership Rates

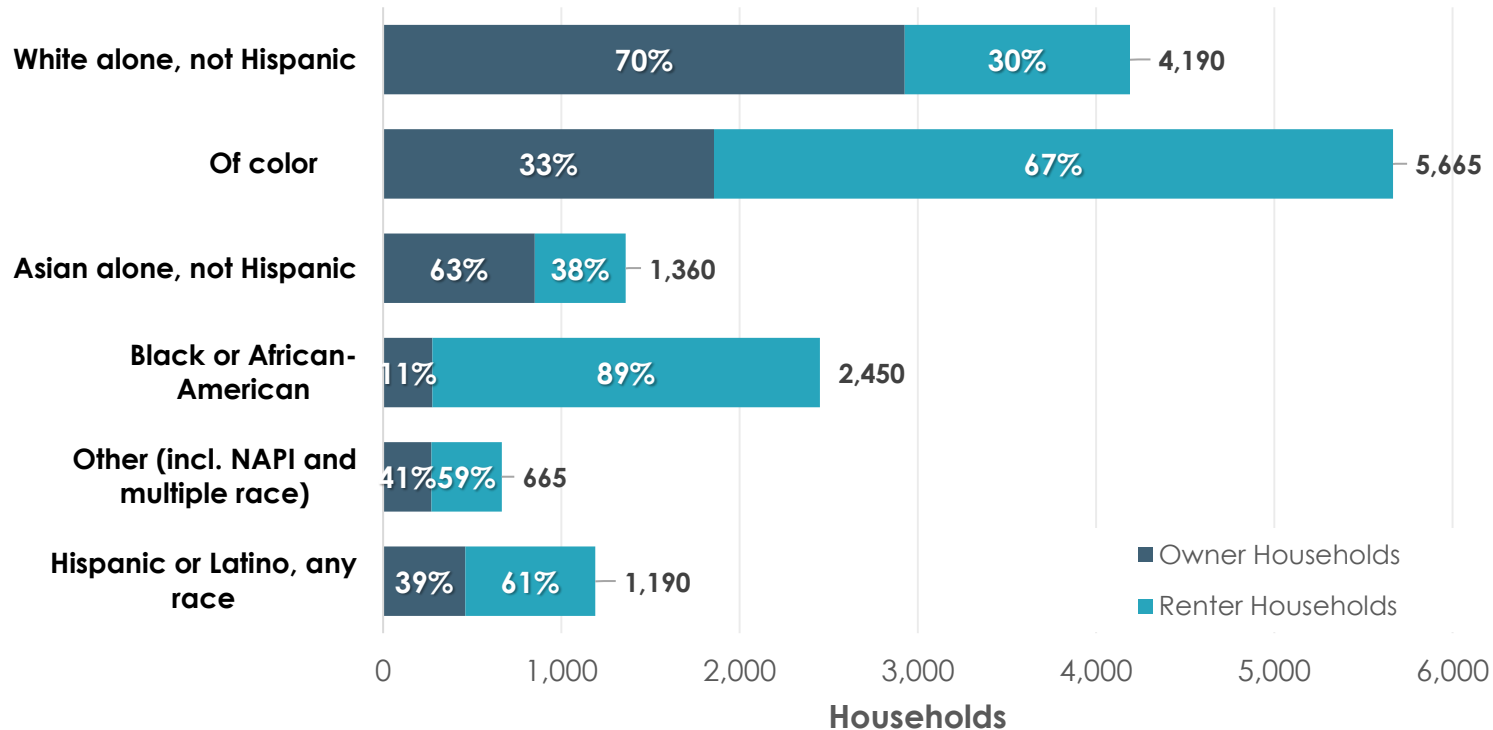
2 out of 3 of **white** residents own a home (**66%**), while only 1 out of 4 Native Hawaiian / Pacific Islanders own a home (**25%**)



SEATAC: HOUSEHOLDS BY RACE AND TENURE

SeaTac Households by Race and Tenure

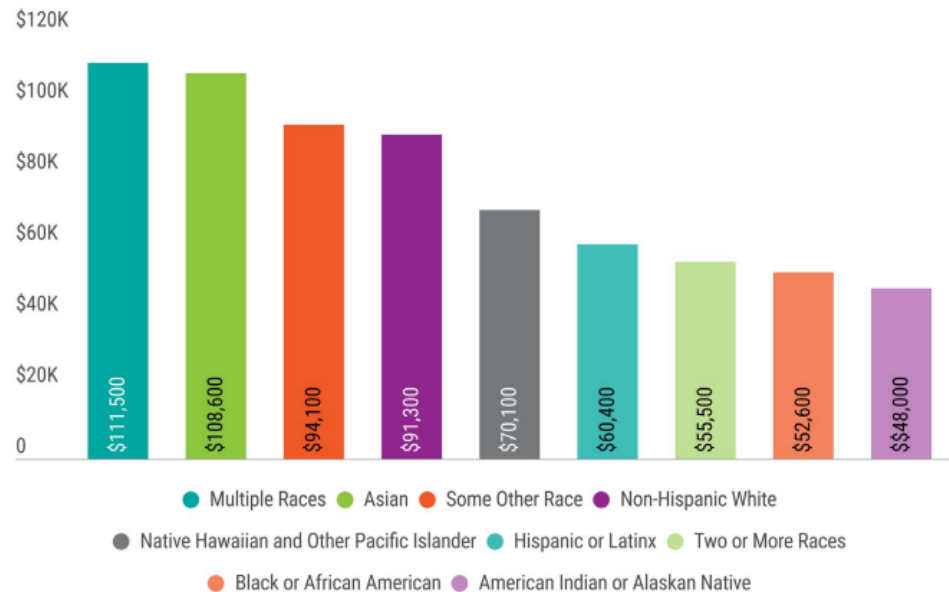
Source: HUD CHAS (based on ACS 2013-2017 5-year estimates)



PSRC: MEDIAN INCOME IN REGION

Median Income

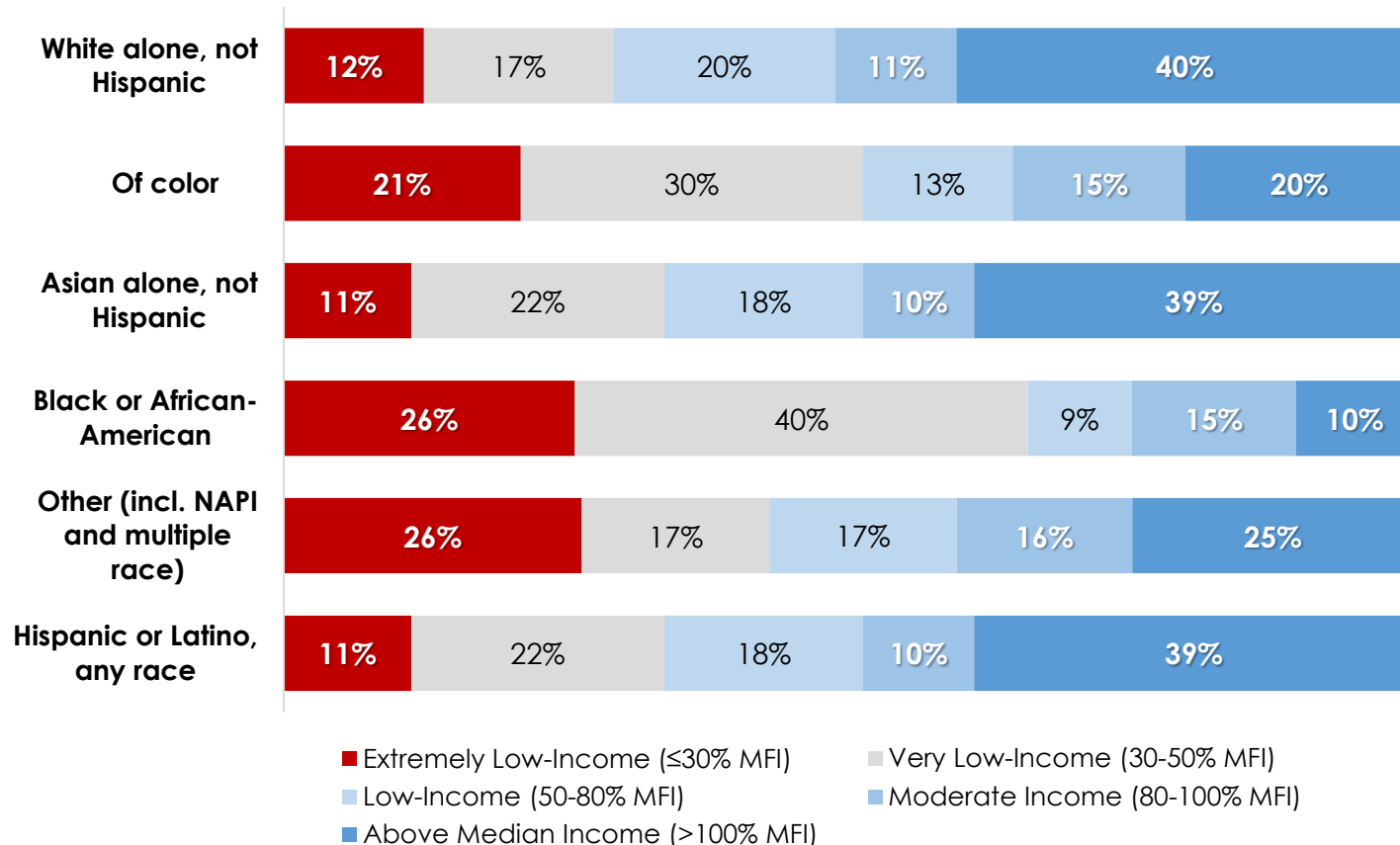
White residents (\$91,300) earn almost double what American Indian / Alaska Native residents earn (\$48,000)



SEATAC: HOUSEHOLDS BY RACE AND INCOME

Proportion of SeaTac Households by Race and Income Category

Source: HUD CHAS (based on ACS 2013-2017 5-year estimates)



PSRC RACIAL EQUITY IMPACT ASSESSMENT & CHECKLIST FOR COMPREHENSIVE PLAN UPDATE PROCESSES

What are racial equity impact assessments?

- Assessments that integrate explicit consideration of racial equity in decisions, including policies, practices, programs, and budgets.
- Can be used to develop strategies and actions that reduce racial inequities and improve success for all groups.

PSRC RACIAL EQUITY IMPACT ASSESSMENT CHECKLIST

- SeaTac's Planning Our City Together Projects will utilize this framework as a starting point in plan and policy development activities.

As part of policy update process:

- 1) **Identify comprehensive plan proposals to assess**
- 2) **Gather and analyze information and data**
- 3) **Engage communities:** Understand potential impacts of proposals
- 4) **Identify strategies for advancing racial equity:** Look for potential unintended consequences, identify strategies to reduce disparate impacts
- 5) **Ensure accountability and communicate**
- 6) **Evaluate outcomes and next steps**

More PSRC equity resources available at: www.psrc.org/equity

OTHER PROJECT UPDATES & NEXT STEPS

Envision SeaTac 2044:	City Center/Airport District Plan:
<ul style="list-style-type: none">• Regular project briefings (monthly with Planning Commission; bi-/tri-monthly or as needed with PED).• Realigning project with SeaTac 2044 schedule.• In Phase 1 of Community Conversations engagement. We'll be back to discuss future Community Conversations topics.• Community Conversations input will guide development of plan elements.• Analyzing growth targets and assessing geographic growth scenarios.• Analyzing equity opportunities citywide.	<ul style="list-style-type: none">• Regular project briefings (monthly with Planning Commission; bi-/tri-monthly or as needed with PED).• Realigning project with SeaTac 2044 schedule.• Moving forward with targeted outreach efforts and gathering input from key interests in the subarea.• Identifying potential growth and redevelopment scenarios for analysis.• Continuing to assess infrastructure (transportation, utilities, public services) needs to serve future growth and change in the subarea.

POTENTIAL COMMISSION ACTION

NO ACTION REQUESTED: This is an informational briefing.

REVIEWS TO DATE:

- **City Center/Airport District Subarea Plan Project:** 3/15/2022, 3/7/2023, 5/2/2023, 6/20/2023, 7/18/2023, 8/15/2023, 9/19/2023
- **Envision SeaTac 2044: Major Comprehensive Plan Update Project:** 9/20/2022, 8/15/2023, 9/19/2023