

VICINITY MAP
SPR22-0002 & SEP22-0005



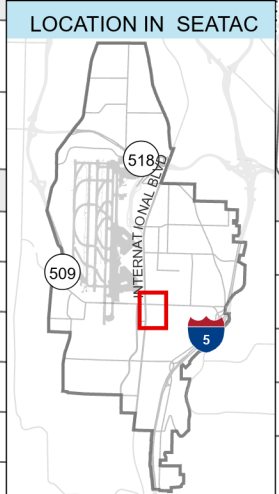
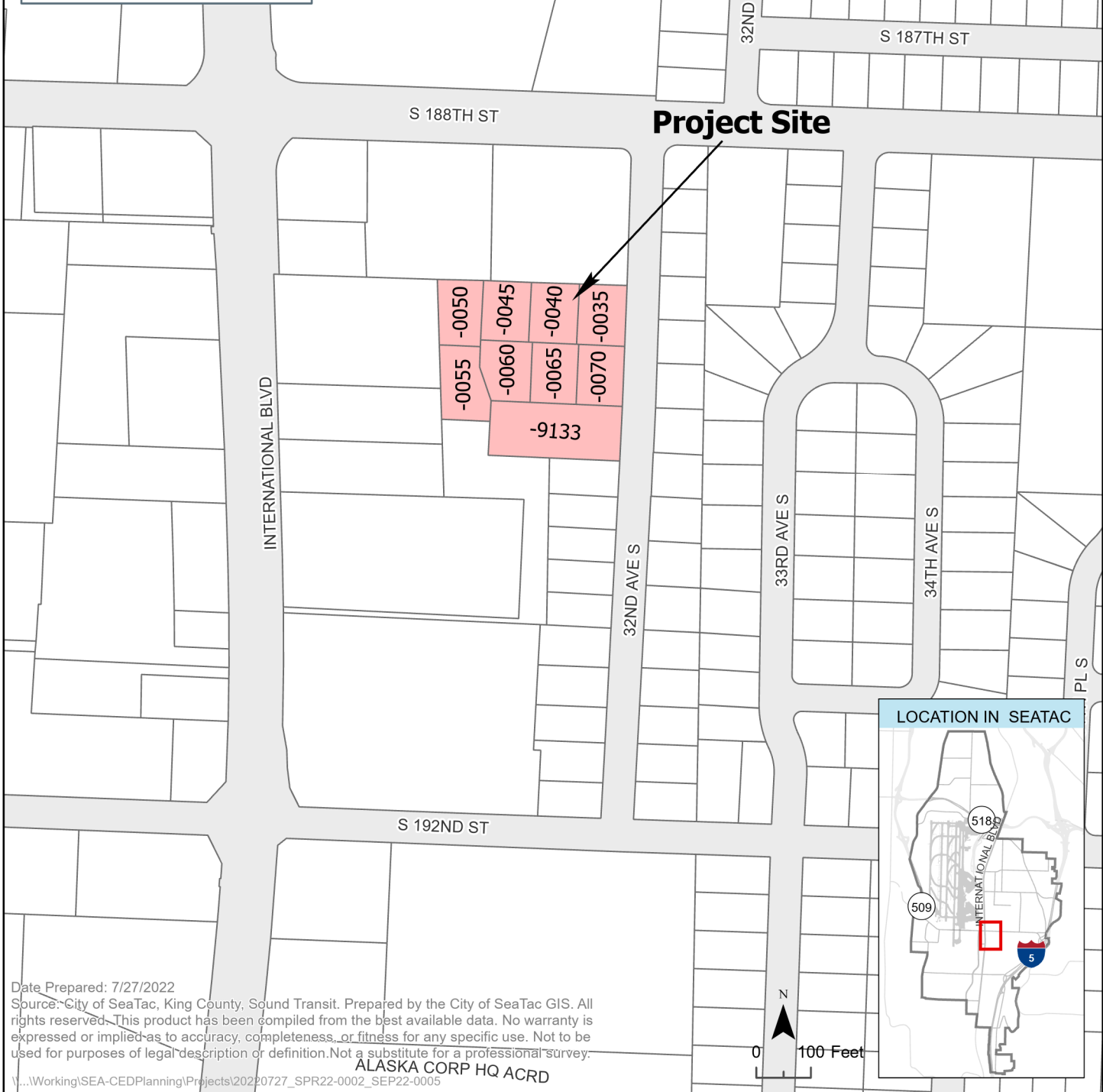
Jiffy Park Lot Expansion

Description:

Expansion of an existing private parking operation by roughly 300 stalls on 2.43 acres of vacant land across nine parcels.

Address:

18836 International Boulevard



Date Prepared: 7/27/2022
Source: City of SeaTac, King County, Sound Transit. Prepared by the City of SeaTac GIS. All rights reserved. This product has been compiled from the best available data. No warranty is expressed or implied as to accuracy, completeness, or fitness for any specific use. Not to be used for purposes of legal description or definition. Not a substitute for a professional survey.

ALASKA CORP HQ ACRD