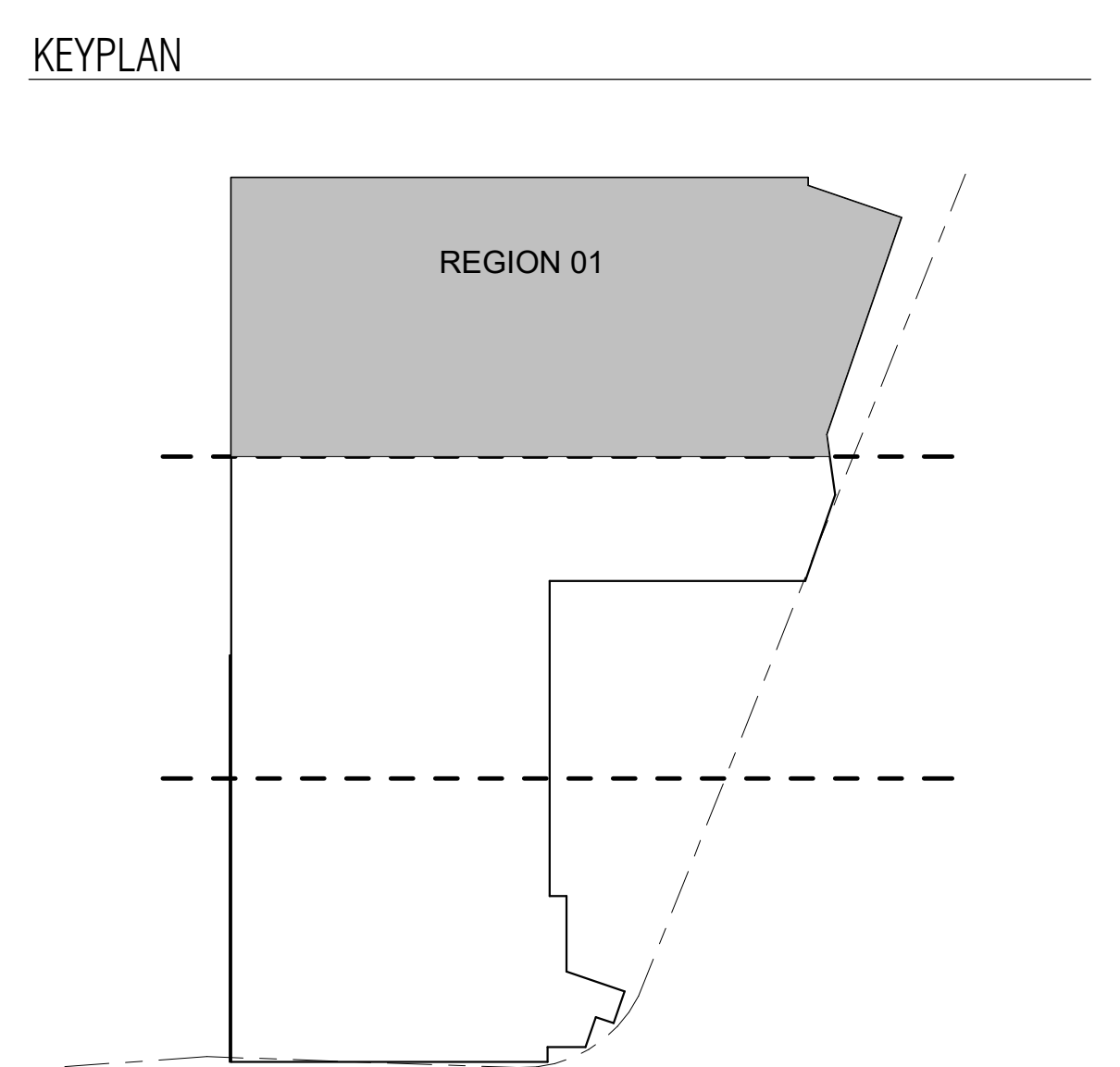
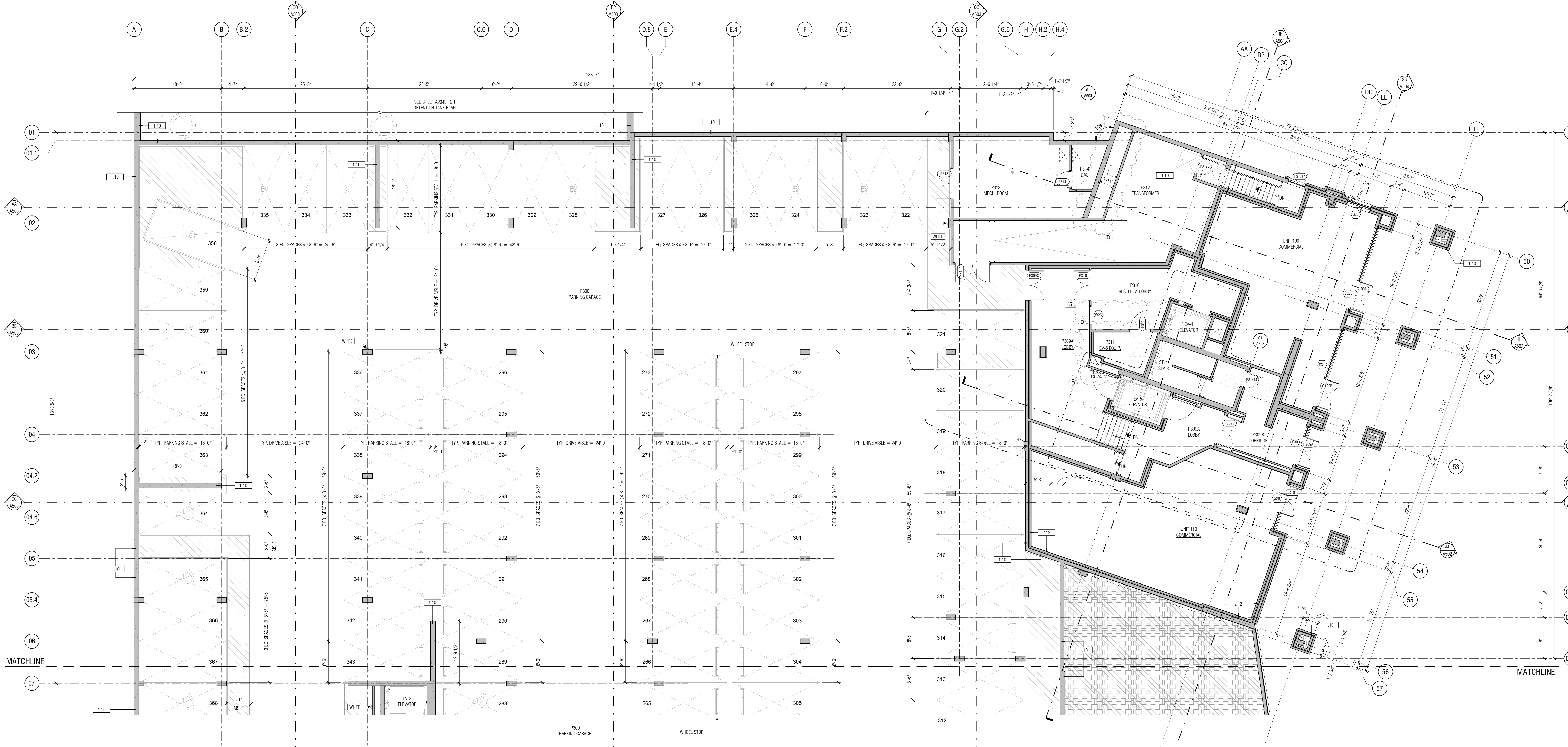




Addendum #5 – Police Substation Tenant Improvement

1. Attached are the As-Builts provided by Inland Group.

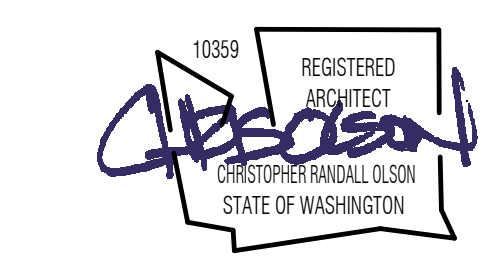


01 PARTIAL P3 PLAN - REGION 01
SCALE: 1/8" = 1'-0"

- FLOOR PLAN NOTES**
- ALL EXTERIOR DIMENSIONS ARE TAKEN FROM FACE OF CONC. FOUNDATION WALL / FACE OF SHEATHING.
 - UNLESS NOTED OTHERWISE ALL INTERIOR DIMENSIONS ARE TAKEN FROM FACE OF STUD OR STRUCTURAL ELEMENT.
 - DIMENSIONS INDICATING "CLEAR" OR "F.O.W." ARE TAKEN FROM FINISH.
 - REFERENCE STRUCTURAL FOUNDATION PLAN FOR ALL SLAB CONTROL JOINTS TYP.

FLOOR PLAN LEGEND

	PARTITION/FURRING		ASSEMBLY TYPE
	F.O.W. FINISH OF WALL		2A-10BC FIRE (WALL HUNG)
	12' CLEAR		2A-10BC FIRE (CABINET)
	18' CLEAR		
	DOOR SYMBOL		INTERIOR ELEVATION
	WINDOW SYMBOL		



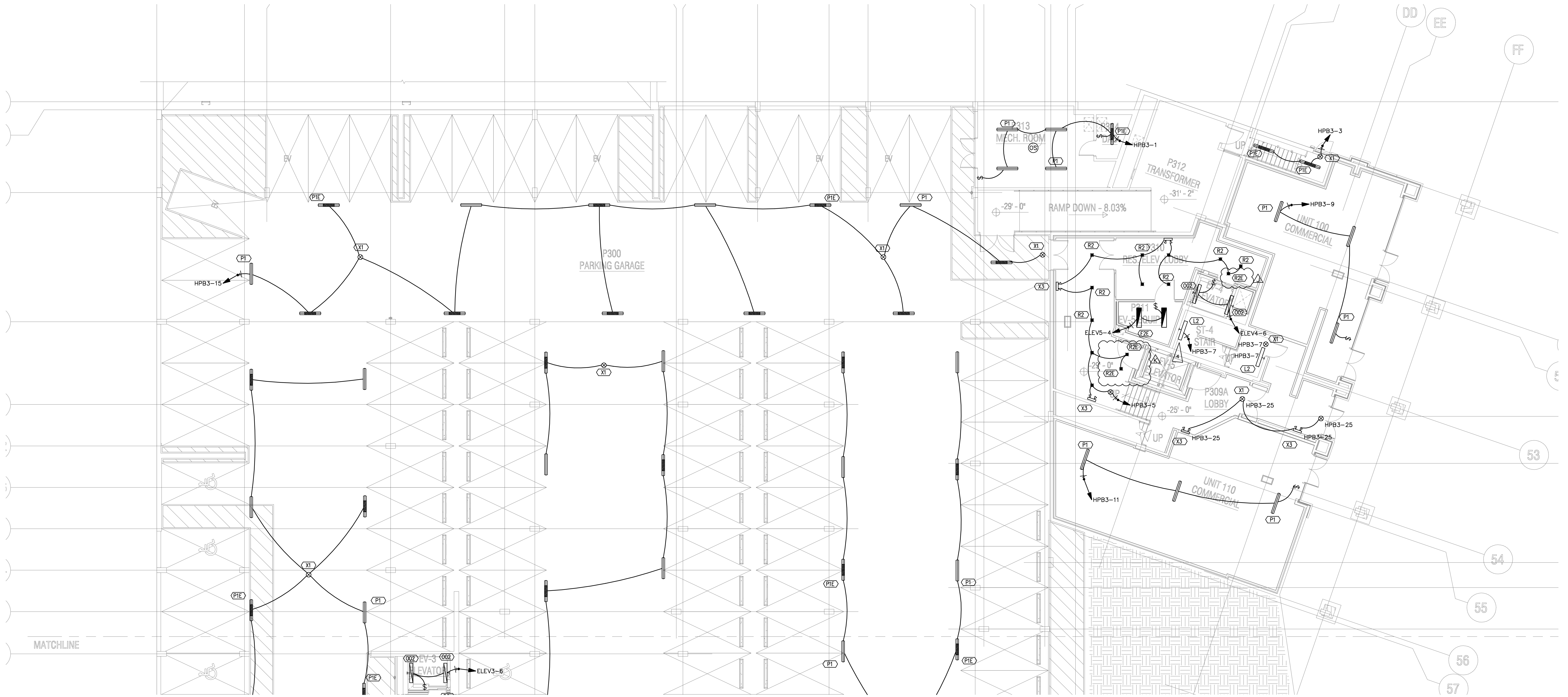
#	PH II - RND II COMMENTS	DATE
S	ASI 002	02/05/21
E	ASI 001	01/08/21
D		10/19/20
#	DESCRIPTION	DATE



PHASE I + PHASE II
POLARIS AT SEATAC
15300 33RD AVE. SOUTH
BLDG. A & BLDG. B
SEATAC, WASHINGTON 98188

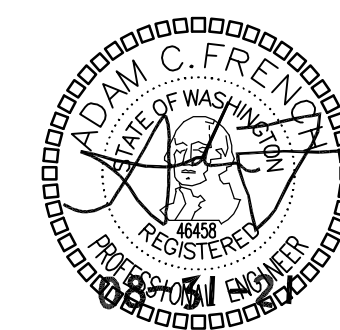
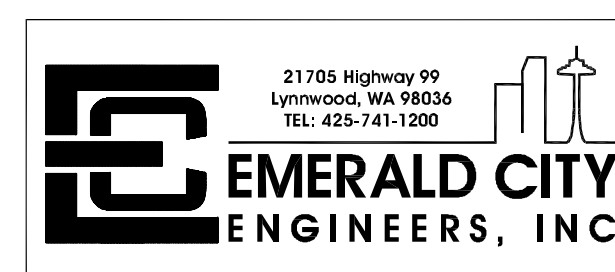
PROJ. #:	1809
DRAWN:	OP
CHECKED:	OP
DATE:	06/17/21

CONSTRUCTION SET
PARTIAL P3 FLOOR PLAN - REGION 01
A201



LIGHTING PLAN
LEVEL P03 – REGION 1
 SCALE: 1/8" = 1'-0"

FLAG NOTES:	SHEET NOTES:
<ol style="list-style-type: none"> PHOTOCELL TO CONTROL LIGHTS IN DAYLIGHT ZONE. PRIMARY DAYLIGHT ZONE. SECONDARY DAYLIGHT ZONE. OCCUPANCY SENSOR TO CONTROL STAIR LIGHTING AT INTERMEDIATE LANDING. LIGHT FIXTURE AT DOOR LANDING TO BE ON 24/7. 	<ol style="list-style-type: none"> ALL EXTERIOR LIGHTING TO BE CONTROLLED BY PHOTOCELL. PROVIDE AN UNSWITCHED HOT TO ALL BATTERY BALLASTS, EMERGENCY FIXTURES, AND EXIT SIGNS FROM DESIGNATED CIRCUIT. GARAGE: SUSPEND LIGHT FIXTURES BELOW INSULATION AND OTHER TRADES INCLUDING EXIT SIGNS.



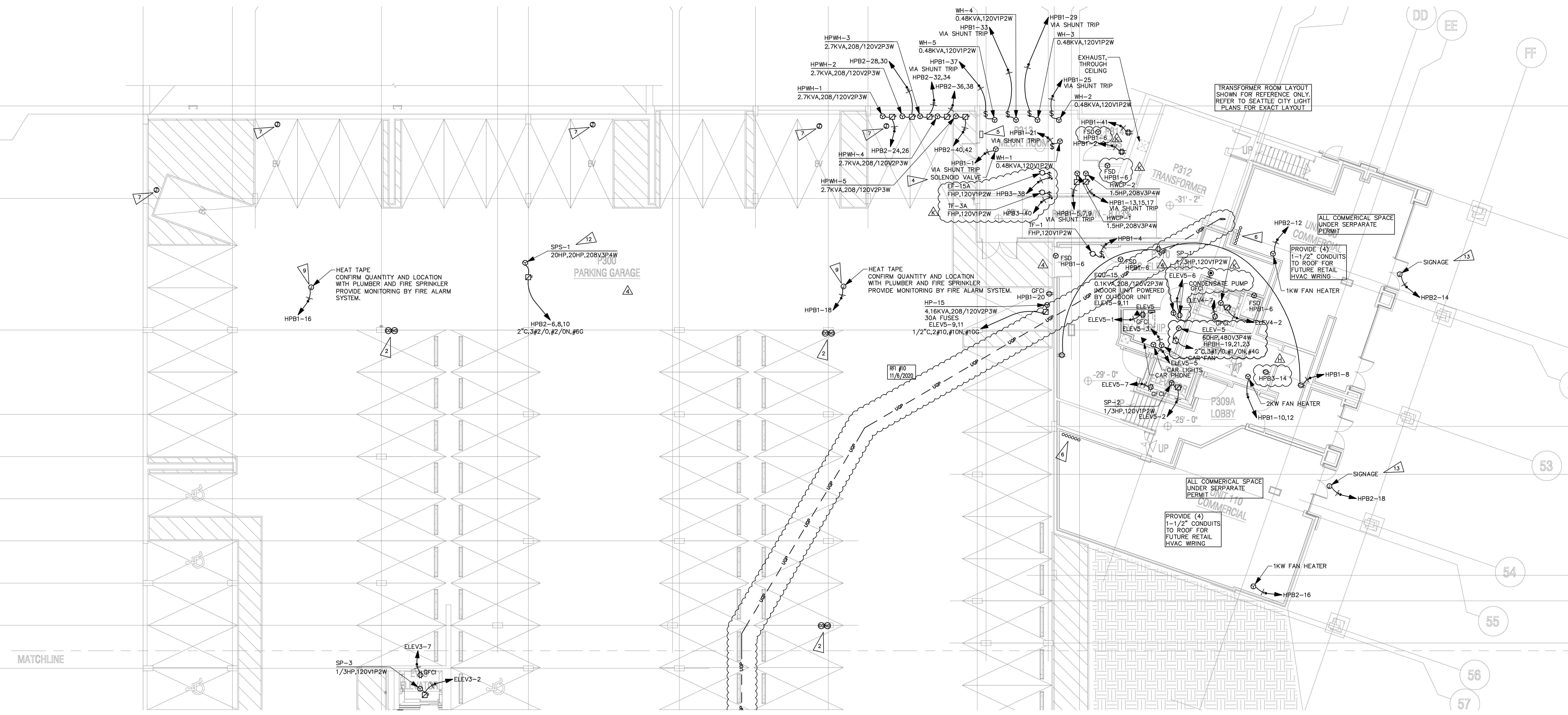
K	ASI 004 - PRE CON REVISIONS	8/31/21
J	CONSTRUCTION SET REVISIONS	6/17/21
H	CONSTRUCTION SET REVISIONS	03/19/21
G	ELECTRICAL REVISIONS	02/18/21
F	PH 8-RND 1 COMMENTS	10/27/20
E	SCL DESIGN CHANGES	10/19/20
D	PERMIT RESUBMITTAL	08/21/20
C	DESCRIPTION	DATE



PHASE I - PHASE II
POLARIS AT SEATAC
 15307 INTERNATIONAL BLVD
 BLDG. A & BLDG. B
 SEATAC, WASHINGTON 98188

PROJ. #:	2007-042
DRAWN:	AFP
CHECKED:	ACF
DATE:	08/31/21

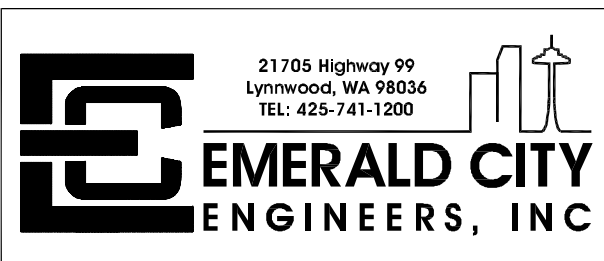
CONSTRUCTION SET
 PARTIAL P03 FLOOR PLAN -
 REGION 01 - LIGHTING
E201



POWER PLAN
LEVEL P03 – REGION 1
 SCALE: 1/8" = 1'-0"

- FLAG NOTES:**
- PATIO OUTLET POWERED BY DWELLING UNIT ELECTRICAL PANEL. CIRCUIT TO LIVING ROOM GENERAL RECEPTACLE/LIGHTING CIRCUIT.
 - ELECTRICAL CONTRACTOR IS TO PROVIDE CONDUIT TO EACH CO DETECTOR IN THE GARAGE. COORDINATE EXACT QUANTITY AND LOCATION WITH MECHANICAL.
 - 2-WAY COMMUNICATION SYSTEM.
 - POWER FOR GAS SOLENOID VALVE. VERIFY CONNECTION AND LOCATION WITH PLUMBING CONTRACTOR.
 - EMERGENCY BOILER SHUTDOWN SWITCHES. PROVIDE RED PUSHBUTTON TO DISCONNECT POWER TO WATER HEATERS CONTROLS, HOT WATER CIRCULATION PUMPS (HWCP), AND ACTIVATE SOLENOID VALVE TO DISCONNECT GAS SUPPLY. PROVIDE A PERMANENT PLAQUE ABOVE PUSHBUTTON. COORDINATE ALL WORK WITH MECHANICAL AND PLUMBING CONTRACTOR.
 - CONDUIT SLEEVES FOR POWER AND LOW VOLTAGE RETAIL SPACE. IN ADDITION, PROVIDE (2) 1" CONDUITS FOR HVAC POWER AND CONTROL WIRING TO GARAGE. EXACT LOCATION TO BE DETERMINED BY TI CONTRACTOR.
 - PROVIDE INFRASTRUCTURE FOR FUTURE INSTALLATION OF ELECTRIC VEHICLE CHARGERS. REFER TO SHEET NOTE 6.
 - PER WASHINGTON ENERGY CODE C405.10, OCCUPANCY SENSOR TO CONTROL AT LEAST 50% OF ALL 120V 15 AND 20 AMPERE RECEPTACLES INSTALLED IN OFFICES AND CONFERENCE ROOMS. PROVIDE SPLIT RECEPTACLES WITH THE TOP RECEPTACLE CONTROLLED; CONTROLLED RECEPTACLES SHALL BE IDENTIFIED IN NEC FIG. 406.3(C), AND THE WORD CONTROLLED SHALL BE LOCATED ON THE RECEPTACLE FACE AND VISIBLE AFTER INSTALLATION.
 - PROVIDE PROVISIONS FOR HEAT TRACE. REFER TO FIRE SPRINKLER PLANS AND PLUMBING PLANS FOR EXACT LOCATION OF PIPES THAT NEED HEAT TRACE. PROVIDE MONITORING BY FIRE ALARM SYSTEM.
 - EXACT LOCATION TO BE IDENTIFIED IN THE FIELD.
 - PER SCL, AUTOMATED METERING REQUIREMENT TO PROVIDE 2"x2"x3" PLYWOOD MOUNTING BOARD WITH DEDICATED DUPLEX RECEPTACLE.
 - CLASS 1 DIV 1 PER WAC 296-46B-501 WITH EXPLOSION PROOF PUMP.
 - JBOX TO BE POSITION SO THAT IT WILL CLEAR THE HEIGHT OF THE AWNINGS, 9'-1" UP AND 10" THICK, REFER TO ARCHITECTURAL FOR DETAILS.

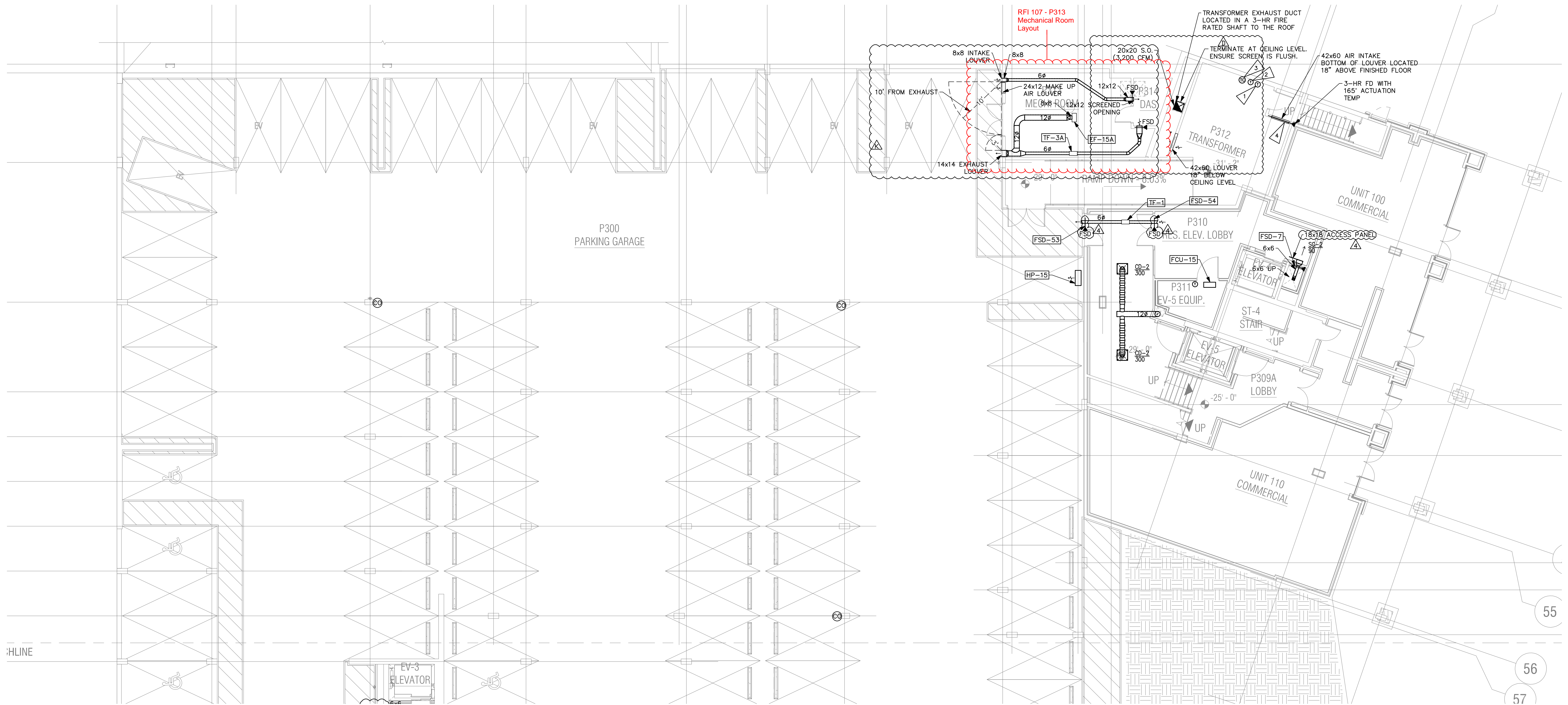
- SHEET NOTES:**
- REFER TO ID PLANS FOR EXACT DETAILS FOR POWER WITHIN THE COMMON AMENITY AREAS.
 - REFER TO LANDSCAPE PLANS FOR EXACT DETAILS FOR POWER WITHIN THE COURTYARD AMENITY AREAS.
 - TRANSFORMER VAULT SHALL COMPLY WITH THE REQUIREMENTS OF NEC 450.41 THROUGH 450.46.
 - PER SCL, A 2" SCHEDULE 40 PVC CONDUIT PATHWAY CONNECTING ALL OF THE ELECTRICAL ROOMS WITH METERS SHALL BE PROVIDED FOR THE ADVANCED METERING ANTENNA CABLE, IN EITHER THE TOP MOST OR BOTTOM MOST METER ROOM, PROVIDE A 2" SCHEDULE 40 PVC CONDUIT TO A NEMA 3R ENCLOSURE (ENCLOSURE SHALL BE AT LEAST 8"x8"x6") MOUNTED ON EXTERIOR OF THE BUILDING. THE CONDUIT SHALL HAVE A MAXIMUM OF 360 DEGREES IN TOTAL BENDS AND NO MORE THAN 100' OF TOTAL LENGTH. CONFIRM ALL AMR REQUIREMENTS WITH SCL.
 - APARTMENT FEEDERS ARE NOT ALLOWED TO PASS THROUGH ADJACENT UNITS. THEREFORE, ALL FEEDERS NEED TO GO VERTICAL IN A COMMON SHAFT, THEN DOWN THE CORRIDOR TO EACH UNIT.
 - PER WASHINGTON BUILDING CODE, PROVIDE INFRASTRUCTURE PROVISIONS FOR 5% OF 424 PARKING SPACES, (22) TOTAL QUANTITY.
 - PROVIDE PRICING PROVISIONS FOR ALL MECHANICAL AND PLUMBING ELECTRICAL CONNECTIONS.
 - PER WEC 230.70(B) RACEWAYS CONTAINING UNFUSED SERVICE CONDUCTORS SHALL NOT EXTEND MORE THAN 15 FEET INSIDE THE BUILDING OR STRUCTURE.

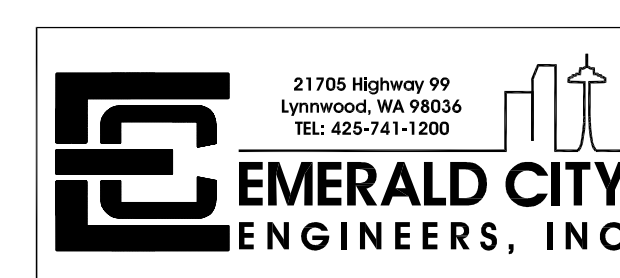
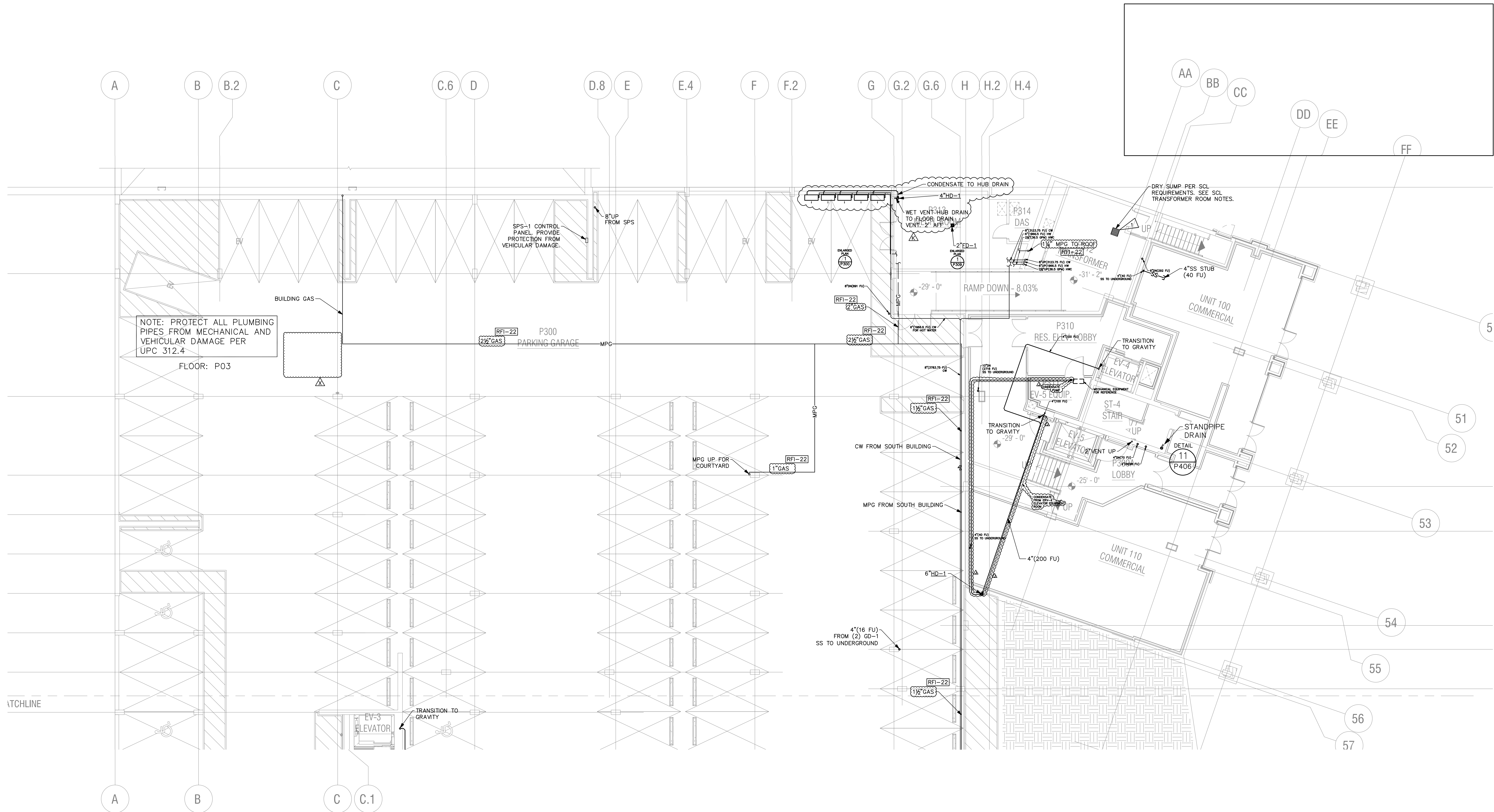


PHASE I – PHASE II
POLARIS AT SEATAC
 15307 INTERNATIONAL BLVD
 BLDG. 8 & BLDG. 9
 SEATAC, WASHINGTON 98188

PROJ. #: 2007-042
 DRAWN: AFP
 CHECKED: ACF
 DATE: 08/31/21

PARTIAL P03 FLOOR PLAN - REGION 1 - POWER
E301





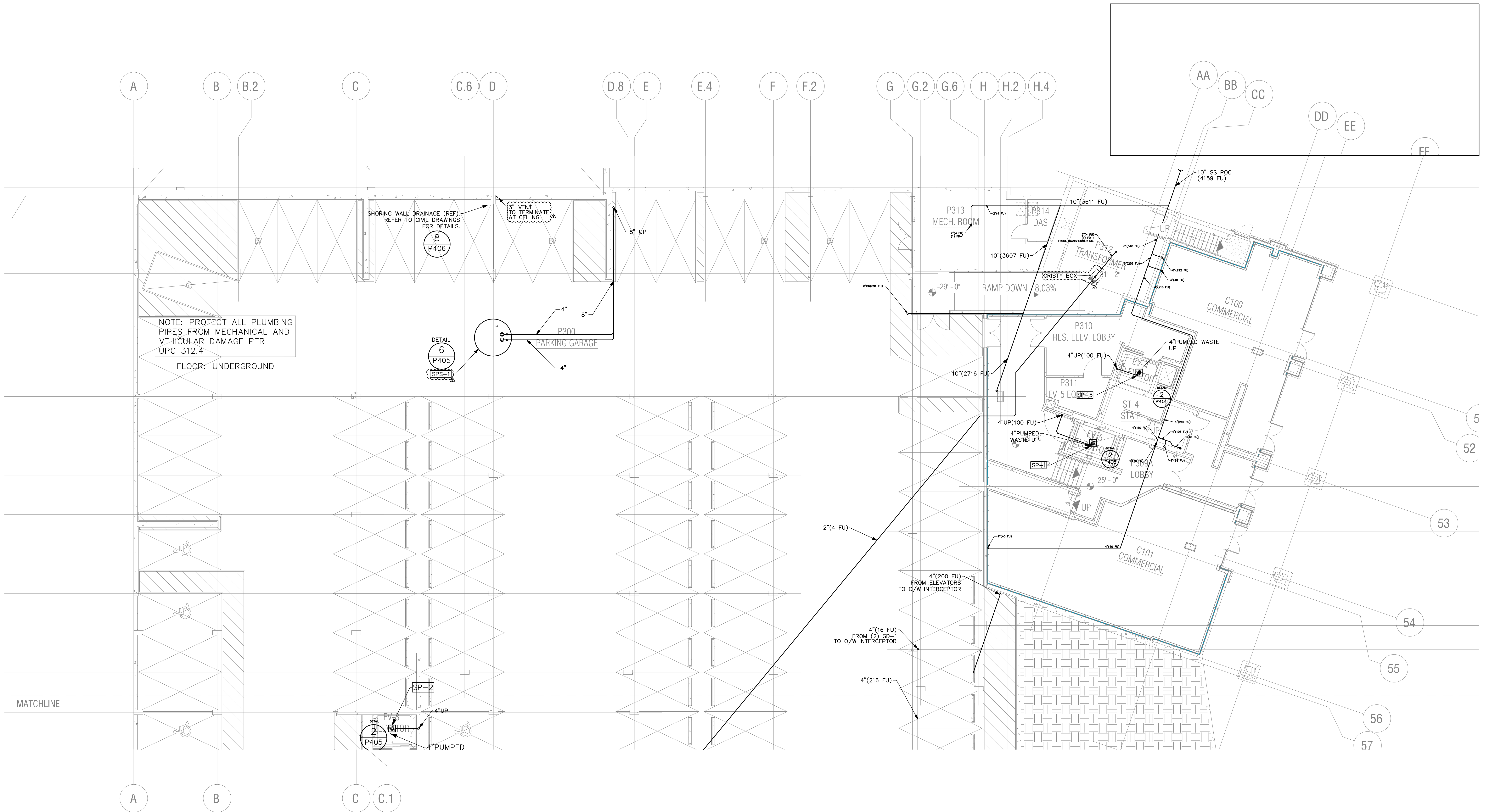
#	DESCRIPTION	DATE
K	ASH-004	08/31/21
J	CONSTRUCTION SET REV	06/17/21
I	CONSTRUCTION SET REV	03/19/21
H	PH 1B - RFI COMMENTS	10/27/20



PHASE I - PHASE II
POLARIS AT SEATAC
 15307 INTERNATIONAL BLVD.
 BLDG. A & BLDG. B
 SEATAC, WASHINGTON 98188

PROJ. #:	2007-042
DRAWN:	KN
CHECKED:	MB
DATE:	06/17/21

CONSTRUCTION SET
 PARTIAL P03 FLOOR
 PLAN - REGION 1
P201



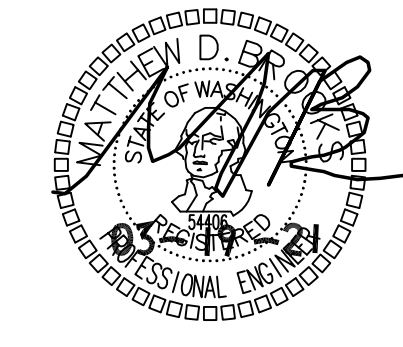
MATCHLINE

NOTE: PROTECT ALL PLUMBING PIPES FROM MECHANICAL AND VEHICULAR DAMAGE PER UPC 312.4
FLOOR: UNDERGROUND

SHORING WALL DRAINAGE (REF.) REFER TO CIVIL DRAWINGS FOR DETAILS.
8" VENT TO TERMINATE AT CEILING

DETAIL 6
P405
SPS-1

DETAIL 2
P405
SP-2



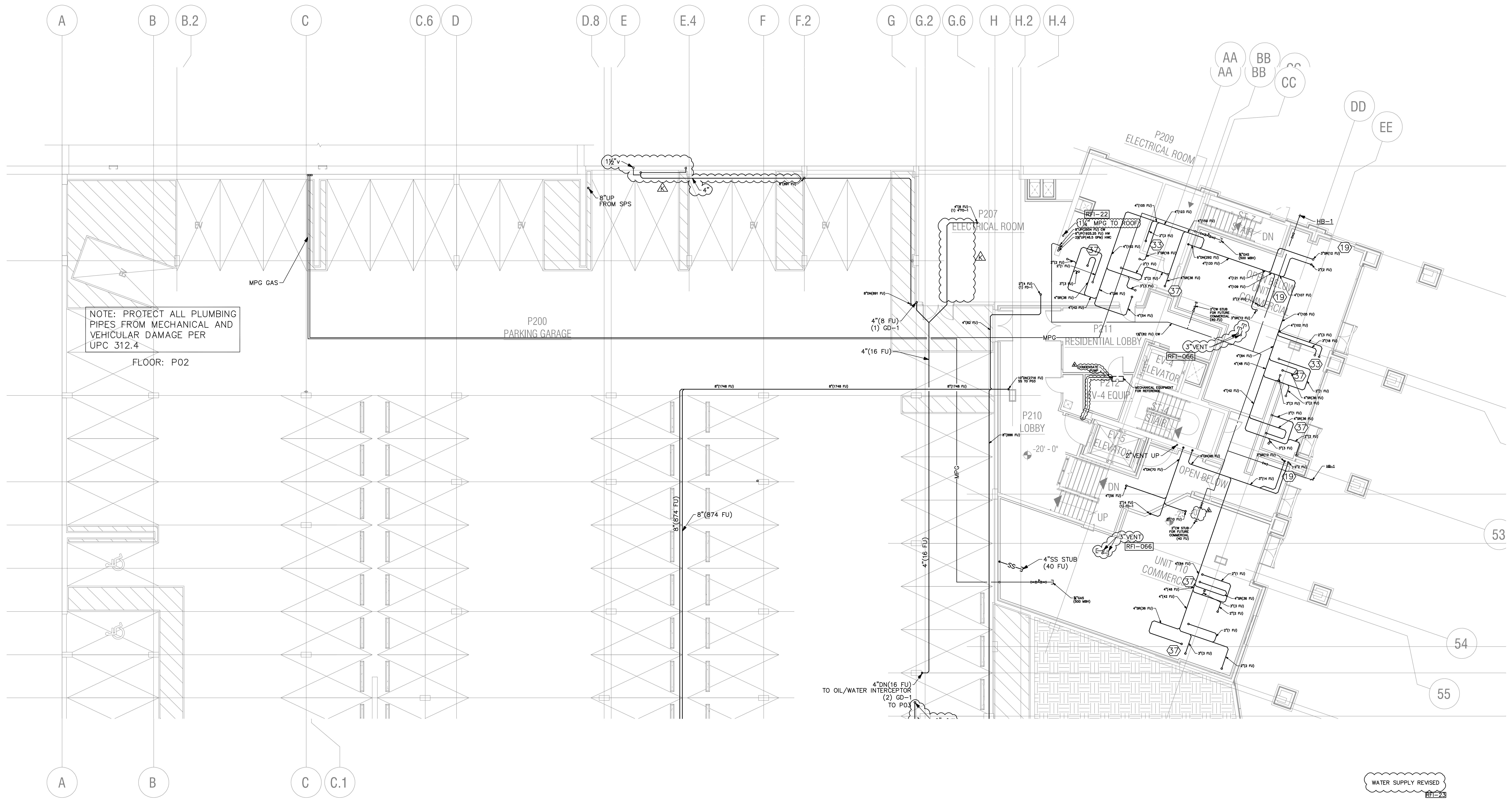
#	DESCRIPTION	DATE
J	CONSTRUCTION SET REV	06/17/21
H	CONSTRUCTION SET REV	03/19/21
4	PH II - RND I COMMENTS	10/27/20
3	PH I - RND III COMMENTS	08/27/20



PHASE I + PHASE II
POLARIX AT SEATAC
15307 INTERNATIONAL BLVD.
BLDG. A & BLDG. B
SEATAC, WASHINGTON 98188

PROJ. #:	2007-042
DRAWN:	KN
CHECKED:	MB
DATE:	06/17/21

CONSTRUCTION SET
PARTIAL UNDERGROUND
FLOOR PLAN - REGION 1
P201U

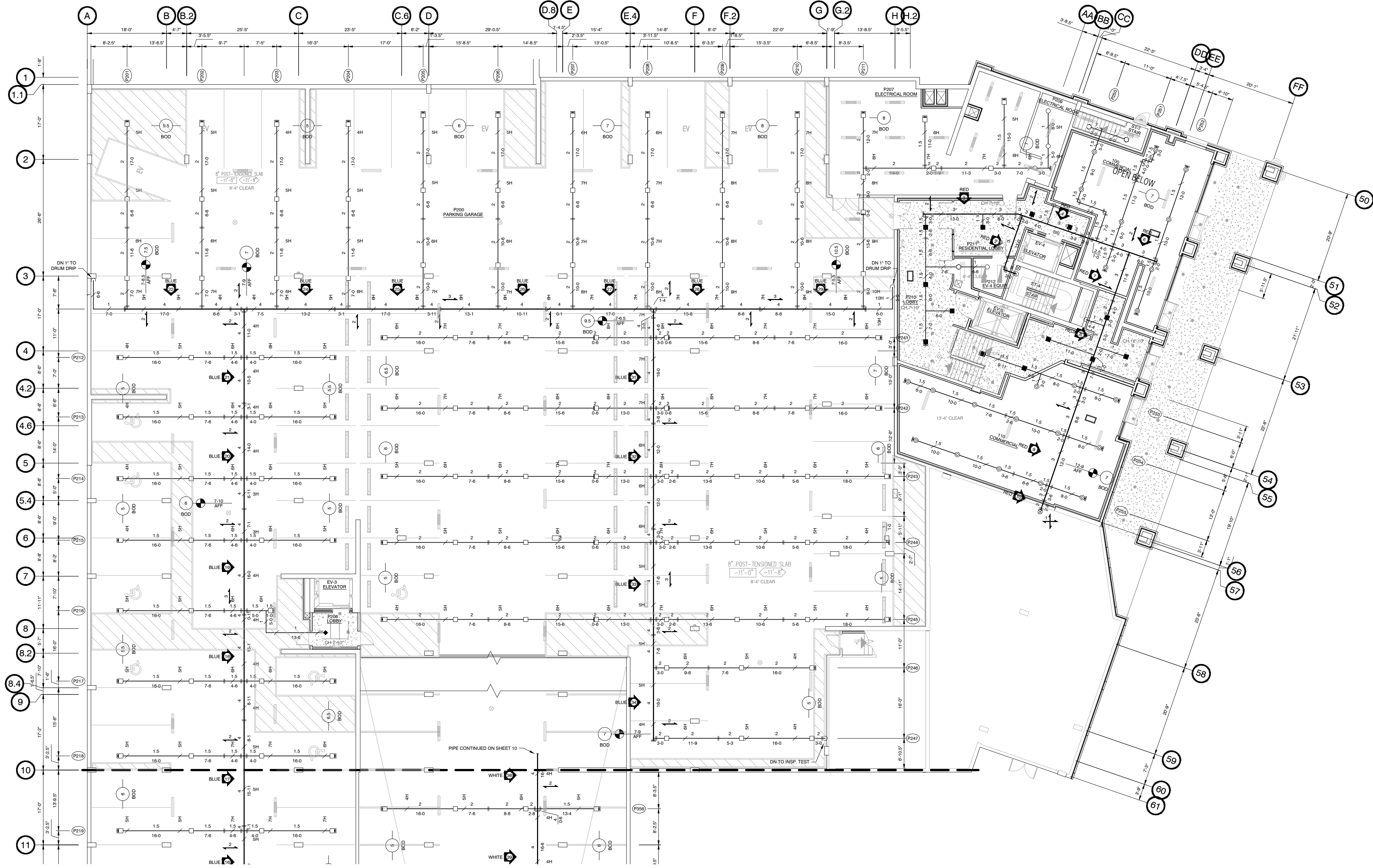


NOTE: PROTECT ALL PLUMBING PIPES FROM MECHANICAL AND VEHICULAR DAMAGE PER UPC 312.4

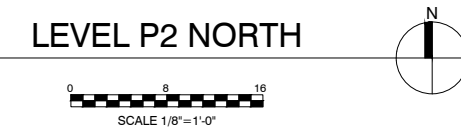
FLOOR: P02

WATER SUPPLY REVISED
8/1-23

!CAUTION! 50% REDUCED PRINTS



MATCHLINE (CONTINUED ON SHEET 8 OF 16)



- FITTER/LISTER NOTES**
1. ALL DRY SYSTEM MAINS ARE TO BE SLOPED 1/4" PER 10 FT. MIN.
 2. ALL DRY SYSTEM BRANCHLINES ARE TO BE SLOPED 1/2" PER 10 FT. MIN.
 3. ALL HANGERS ARE TO BE TYPE 'H', UNO.
 4. ALL SPRINKLER HEADS SHOWN '®' TO BE INSTALLED IN 1" x 1/2" BUSHINGS.
 5. INSTALL BRANCHLINE RESTRAINT PER DETAIL ON SHEET 2.

LEVEL P2

HANGER LEGEND	
Symbol	Description
Symbol	Description
Symbol	Description
Symbol	Description
Symbol	Description

SPRINKLER LEGEND						
SYM	MANUFACTURER	S.I.N.	TYPE	MODEL	OPERATING PRESSURE	QUANTITY
Symbol	RELIABLE	RA1325	SSU	F156	BRASS	5.6K 1/2" 155" 4
Symbol	RELIABLE	RA1425	SSU	F1PR66	BRASS	5.6K 1/2" 155" 27
Symbol	TYCO	TY6137	SSU	EC-14	BRASS	14.0K 3/4" 155" 111
Symbol	RELIABLE	RA3415	CONC	GS-56	WHT	5.6K 1/2" 160" 13
Symbol	RELIABLE	RS714	DRY SSP	F3QR	WHT	5.6K 1" 155" 1

ABBREVIATIONS	
APF	ABOVE FINISHED FLOOR
BOB	BOTTOM OF BEAM
BSU	BOTTOM OF SLAB
BSU	BOTTOM OF DECK
BSU	BOTTOM OF JOIST
BSU	BOTTOM OF PURLIN
BSU	BOTTOM OF TRUSS
BSU	BOTTOM OF FRAMING
BSU	FIELD ORDER
BSU	FRONT FACE OF WALL
BSU	OUTSIDE FACE OF WALL
BSU	NO AUTO. SPRINKLERS UNLESS NOTED OTHERWISE

SYMBOL LEGEND	
Symbol	CENTERLINE OF PIPE TO REFERENCED STRUCTURE IN INCHES
Symbol	2-WAY EARTHQUAKE SWAY BRACE
Symbol	4-WAY EARTHQUAKE SWAY BRACE
Symbol	LETTER INDICATES TYPE
Symbol	HANGER LOCATION
Symbol	ELEVATION ABOVE REFERENCED POINT IN FEET AND INCHES
Symbol	HYDRAULIC CALCULATION NODE
Symbol	FLEXIBLE COUPLING
Symbol	RIGID COUPLING

REVISIONS		
NO.	DATE	BY
1	7/14/21	AW

CONTRACT WITH
INLAND WASHINGTON, LLC
 120 W CATALDO AVE, STE 100
 SPOKANE, WA
 PROJECT MANAGER : BOBBY EVERSON
 PHONE : 509-321-3216
 SUPERINTENDENT :
 PHONE :
 FAX :

CERTIFICATE OF COMPETENCY
 FIRE PROTECTION SPRINKLER SYSTEMS
 Nicholas James Scott
 0627-1019-C Level 3
 Smith Fire Systems, Inc.
 SMITHFS1360T
 Expires 12/31/21
 Signature

SMITH FIRE SYSTEMS, INC.
 1106 54th AVE EAST
 TACOMA, WA 98424
 CONTR. REG. NO. SMITHFS1360T
 BUS: (253) 826-1880 FAX: (253) 826-2350

POLARIS AT SEATAC
 15245 INTERNATIONAL BLVD S
 SEATAC, WA

DESIGNER	PROJECT MGR	DATE	SHEET	JOB NO.
BILL WOLF	BC	6-2-2021	7 OF 22	TC20009