



**Sidewalk Committee**  
**\*Hybrid\* Meeting Agenda**  
 December 15, 2022  
 6:00 PM to 7:00 PM

**This meeting will be conducted in a hybrid format with in-person and remote options for public participation. The meeting will be broadcast on SeaTV Government Access Comcast Channel 21and live-streamed on the City’s website <https://seatacwa.gov/seatvlive> and click the “live” Channel 1 grey box.**

**Council**  
 Mohamed Egal, Chair  
 Takele Gobena  
 Mayor Jake Simpson

**Community Members**  
 Jill Aldrich  
 David Korthals  
 Paul Jackson  
 Trevor White  
 Joe Vinson

**Staff Coordinators**  
 Will Appleton  
 Public Works Director  
 Florendo Cabudol  
 City Engineer

**Note: A quorum of the Council may be present.**

Other Staff Members Present:

ITEM	TOPIC	PROCESS	WHO	TIME
1	Call to Order		Chair	
2	Public Comment	<p><b>PUBLIC COMMENTS:</b> The committee will hear in-person public comments and is also providing remote oral and written public comment opportunities. All comments shall be respectful in tone and content. Providing written comments and registering for oral comments must be done <b>by 2:00 PM</b> the day of the meeting. Registration is required for remote comments and encouraged for in-person comments. Any requests to speak or provide written public comments which are not submitted following the instructions provided or by the deadline will not be included as part of the record. • Instructions for providing remote oral public comments are located at the following link: <a href="#">Registration for Oral Public Comments</a> - Council Committees and Citizen Advisory Committees</p> <p>Submit email/text public comments to SidewalkPublicComment@seatacwa.gov. The comment will be mentioned by name</p>	Chair	5

		and subject and then placed in the committee handout packet posted to the website meeting calendar the next day.		
3	Public Comment		Chair	
4	Approve Prior Meeting Minutes	September 15 Minutes to approve	Chair	5
5	Streetscape Discussion	Discussion	Will Appleton	45
6	Department Update	Informational Update	Florendo Cabudol	5
7	Adjourn		Chair	



# Sidewalk Committee Minutes

September 15, 2022  
6:00 PM to 7:00 PM  
Virtual Meeting

Commenced: 6:00 PM  
Adjourned: 7:15 PM

### Council

Mohamed Egal, Chair P  
Takele Gobena A  
Jake Simpson, Mayor A

### Community Members

Jill Aldrich A  
David Korthals P  
Paul Jackson A  
Trevor White A  
Joe Vinson P

### Staff Coordinators

Will Appleton  
Public Works Director  
Florendo Cabudol  
City Engineer

**Note: A quorum of the Council  
may be present.**

Other Councilmembers Present:  
Peter Kwon, Senayet Negusse

Other Staff Members Present:  
Brenton Cook, Civil Engineer 2,

ITEM	TOPIC	PROCESS	WHO	
1	Call to Order		Chair	
2	Public Comment	No Public Comment	Chair	
3	Prior Minutes Approval	April 2022 minutes were approved	Chair	
4	River Ridge Elementary Sidewalk Project	<p>Informational Update</p> <p>Brenton Cook, Civil Engineer 2, presented this update of the River Ridge Elementary Sidewalk Project. The City and Kent School District have partnered on this project and executed an Interlocal Agreement on the roles and responsibilities of each partner to the project.</p> <p>Start of construction is anticipated in Spring 2023, with completion expected prior to the start of the 2023/24 School year.</p> <p>Per the ILA, the city is responsible for all costs and efforts associated with design coordination with franchise utilities, design review with School</p>	Brenton Cook	

		<p>Districts' designer, and all property acquisition and easements necessary to construct the project. The School District is responsible for all costs and efforts associated with project design, advertisements and award of the project, and construction and administration of construction.</p> <p>The School District's designer is the same that designed the new River Ridge Elementary School, so they are very familiar with the site. The city has contracted with the Watershed Company, which will evaluate existing wetland within Grandview Dog Park, where stormwater from the new road improvements will discharge, and with a land acquisition agent for Right of Way (ROW) acquisitions and easements.</p> <p>Proposed improvements include: existing city ROW along east side of Military Road South will be widened by 8 feet; new 6-foot wide concrete sidewalk; bike lane; landscaping strip buffer between sidewalk and roadway; new pedestrian and roadway lighting; new stormwater conveyance and treatment infrastructure.</p> <p>Stormwater design has been the largest challenge thus far. Current stormwater infrastructure along Military Road South is limited and the majority of runoff from the roadway is currently shed and dispersed to the roadway shoulder. The City relies on an old concrete stormwater pipe owned by WSDOT to convey city stormwater through the School District property to an existing wetland within the dog park. This is not ideal and the City is planning to remedy this with a proposed design of a drainage easement to convey stormwater through the school property and addition of a below ground dispersion trench within the dog park near an existing wetland.</p> <p>The City expects to receive school district ROW plans this month, and staff will begin the appraisal process for property acquisitions and easements.</p> <p>Next Steps: Finalize overall project plans and specifications in early 2023; advertisement for bid in Spring. Construction in Spring, Summer and be substantially complete prior to start of the 2023/24 school year.</p> <p>Committee raised a question as to whether design of SR509 extension will alter our drainage</p>		
--	--	--	--	--

		<p>plans. Staff responded that no change is anticipated at this time.</p> <p>A question was raised about new sidewalk requiring regrading of driveways along the project alignment. Staff responded that there will be some regrading of driveways.</p> <p>There was discussion about the current stormwater outfall in the dog park, the existing wetland, and the proposed changes to stormwater infrastructure. The City feels it is best to no longer rely on older WSDOT-owned infrastructure and that this project affords the right opportunity to address the need now with new infrastructure and add some future compatibility with development in the area infrastructure.</p> <p>Staff answered a question regarding ADA compliance; all retaining walls and sidewalks, driveways will be ADA compliant.</p>		
5	Lighting Policy	<p>Informational Update</p> <p>The City's new Lighting Policy will be uploaded to the website calendar for this meeting.</p> <p>Will Appleton, Director of Public Works, presented the new lighting policy, as part of a streetscape design policy recently adopted for the city airport business district. Streetscape provides for aesthetic design, pedestrian and bike friendly options, seating, public art, planters, bike parking, and other elements. Lighting is one element of the streetscape adoption, including light pole selection, pedestrian and street lighting, illumination pattern/intensity, light map (special area vs neighborhoods).</p> <p>A decision was made to further the discussion of this topic at the October 20 Sidewalk Committee meeting.</p>	Will Appleton	
6	Adjourn		Chair	



1

Streetscape is a term used to describe the natural and built fabric of the street, and defined as **the design quality of the street and its visual effect.**

The concept recognizes that a street is a public place where people are able to engage in various activities.

2

## ELEMENTS WITHIN CITY ROW

**SIDEWALKS**  
foster pedestrian-friendly street systems where pedestrians can experience safety, comfort, accessibility, and efficient mobility.



**CURB EXTENSIONS**  
extend the sidewalk, provide an opportunity for social interaction, and offer a safe refuge for pedestrians crossing streets.



**LANDSCAPED BUFFERS**  
use trees and plantings to create a visual and noise buffer between pedestrians and vehicles.



**PLANTERS**  
add color, texture, and interest to a streetscape.



**SEATING**  
provides places to rest, wait for transit, and socialize with others.



**PUBLIC ART**  
enhances a sense of place, civic pride, and visual appeal to a public space.



**LIGHTING**  
increases a sense of pedestrian safety, security, and comfort.



**BIKE PARKING**  
can be both functional and serve as public art.



**Streetscaping provides...**



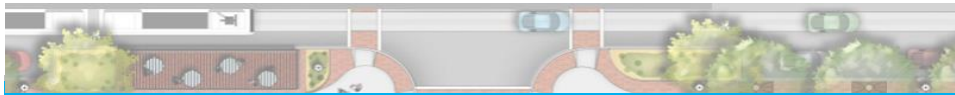
**Complete Communities**  
Institute for Public Administration | IPA  
UNIVERSITY OF SEATTLE  
SCHOOL OF PUBLIC AFFAIRS



Integrated Art



3



## City Streetscape Initiatives

1. Street Cross Sections
2. Airport Station Pedestrian Improvement Project
3. City Center Plan (Phase Two)
4. Lighting Policy
5. SeaTac Signage Program

4

# STREET CROSS SECTIONS

5

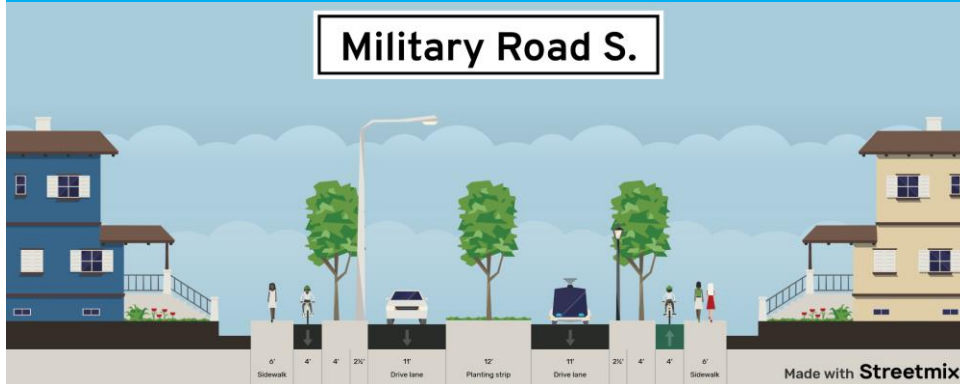
## Street Cross Sections

1. Adopted by reference in the SeaTac Municipal Code
2. Last revised 2020
3. Provides standard road cross sections for: Principle, Minor, Collector, Local Roads
4. Standards ensure safe, consistent driving conditions and contributes to the look and feel of our ROW
5. Some standards are established by WSDOT, industry guides and the City
6. Vehicles, pedestrians, bike riders, transit, ADA

6



## Example Cross Section



Some standards vary, depending on the road classification

- ROW width: 100' – 60'
- Sidewalk widths: 8' – 6'
- Landscape strips: 6' - 4'
- Lighting specifications vary

7

# AIRPORT PEDESTRIAN IMPROVEMENT PROJECT, URBAN DESIGN REPORT

8

## Airport Station Pedestrian Improvement Project



- Exciting project introducing a new and creative approach to a Capital Improvement Project.
- UD Report will identify a unique urban design aesthetic & identity for the Project.
- Installments will create cohesive & unique lighting, benches, color palette, rubbish receptacles, art, etc.
- Streetscape & Gateway Ad Hoc Committee (SGAC) met three (3) times & provided valuable input.

9

### CONCEPTUAL THEME DEVELOPMENT

Three conceptual theme for the urban design approach was developed and the 'Celebrate SeaTac' was the theme stakeholders from the Ad Hoc Committee decide to move forward into the design phase for urban design and placemaking.

#### Going Places

International Gateway

Celebrate SeaTac

### Celebrate SeaTac!

*"A gateway to the Pacific Northwest!"*

- **Hospitality:** the community of SeaTac welcomes visitors from around the world
- **Global gateway:** celebrating the area's history, businesses, and nature

10

3.0 URBAN DESIGN APPROACH

DISTRICT **COLOR & MATERIAL PALETTE**

**Celebrate SeaTac!** *A gateway to the Pacific Northwest!*



INDUSTRY + TECHNOLOGY + FOG + SKY + FORESTS + SALMON

corten steel

raw steel with a patina

stainless steel

textured concrete

powder coat

glass

powder coat

landscaping

powder coat

concrete color



11

**STREETSCAPE ELEMENTS**



INDUSTRY + TECHNOLOGY + FOG + SKY + FORESTS + SALMON



contemporary bench with sleek curves, optional dividers



standard bike rack, surface mounted



concrete and/or stone "pebble" seating with graffiti coating



lit bollard



pedestrian railing



tree grates with breakaway opening, ADA compliant, heel proof



recycle & litter receptacle, durable & lockable



bottle refilling station

12

## STREETSCAPE ELEMENTS



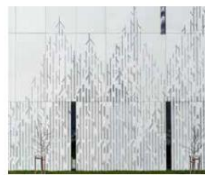
INDUSTRY + TECHNOLOGY + FOG + SKY + FORESTS + SALMON



planter railing



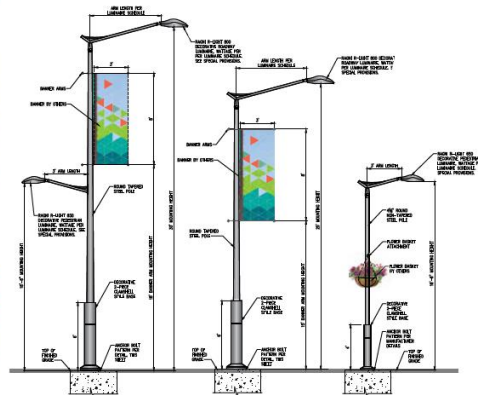
decorative screening  
community input



decorative concrete wall treatment  
w/ engraving finish



decorative concrete wall  
treatment w/ light inlays



13

## STREETSCAPE DETAILS CUSTOM DISTRICT IDENTITY



INDUSTRY + TECHNOLOGY + FOG + SKY + FORESTS + SALMON



decorative etched  
surface treatment



engraved corten  
metal inlay



linear pavement lighting



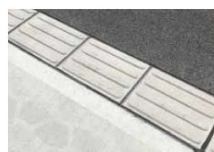
2x2 scored integral colored cement  
concrete crosswalk



2x2 scored cement concrete sidewalk



story telling medallion inlay



detectable edge paver



raised bike facility

14

**STREETSCAPE DETAILS CUSTOM DISTRICT IDENTITY**



**Decal Inspiration:**

paper airplanes  
geometric  
3-dimensional  
nostalgic  
playful  
recognized by all ages



add-on metal and decals on metal planters (in various finishes) used in large pedestrian nodes or parklet locations



add-on metal decals on bike racks



add-on vinyl decals on trash receptacles

15

**URBAN PLACEMAKING ELEMENTS - PLANT PALETTE**



16





**Photosimulation of Segment 2 @ 32nd Ave S Facing South**

*Note:* This photosimulation is a conceptual depiction of the corridor character used to solicit feedback during the public engagement process. The proposed urban design elements will continue to evolve through to final design.

17

## CITY CENTER, PHASE TWO

18

## City Center (Phase Two)



Creating streetscape design guidelines for the entire District that **leverage design work from Airport Station Area Pedestrian Improvement Project**, including guidance on cross-sections and urban design features.

19

## LIGHTING

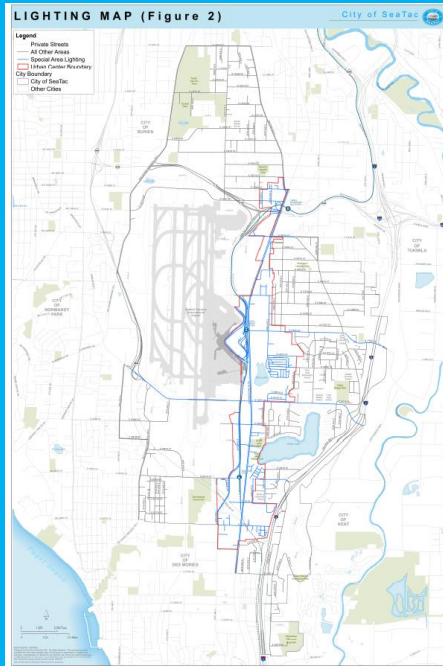
20

# Lighting Design

Light Pole Selection

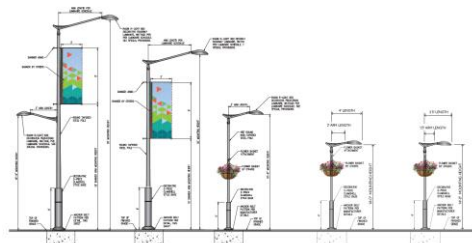
Pedestrian and Street Lighting

Illumination pattern/intensity



21

## Special Areas - Ragni Family



22



Neighborhoods - Cyclone Domia Family



23

SEATAC SIGNAGE PROGRAM  
Project Underway

24

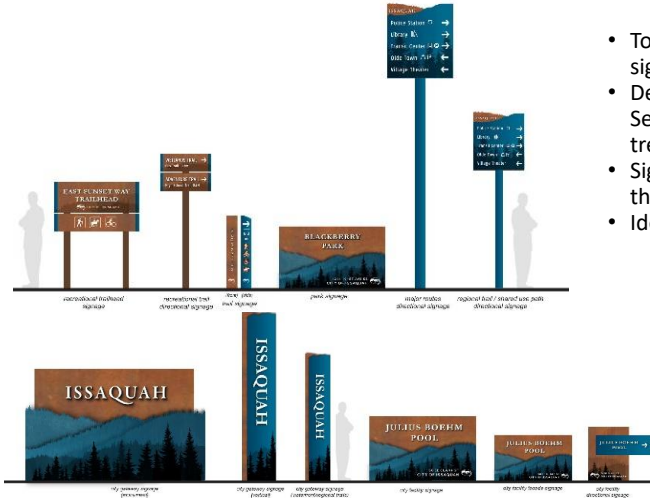
# SEATAC SIGNAGE PROGRAM

## EXISTING CITY SIGNS



25

## FAMILY OF SIGNAGE EXAMPLE



- To create a family of city facility signage types.
- Design and install 'Welcome to SeaTac' city entry gateway treatments.
- Signage at key locations throughout the City.
- Identification signage for:
  - Internal 'sub area/ district areas';
  - Parks;
  - City facilities;
  - City building façades; and
  - Directional signs to City-owned facilities

26

# SEATAC SIGNAGE PROGRAM

## EXISTING SEATAC DESIGN PALETTES

City of SeaTac



Everywhere's Possible



Airport Station Pedestrian Improvement Project - Celebrate SeaTac!



SEA - SeaTac International Airport



27

# SEATAC SIGNAGE PROGRAM

## SIGN DESIGN EXAMPLES - GATEWAY (A ONE-OFF)



28



# SEATAC SIGNAGE PROGRAM

## SIGN DESIGN EXAMPLES - MONUMENT (SEVERAL KEY LOCATIONS)



29

# SEATAC SIGNAGE PROGRAM

## SIGN DESIGN EXAMPLES - DIRECTIONAL, TRAIL, WAYFINDING



vehicular directional signage

pedestrian/bicycle directional signage

park/trail signage

trailhead information/mileage signage

30

# QUESTIONS

31