

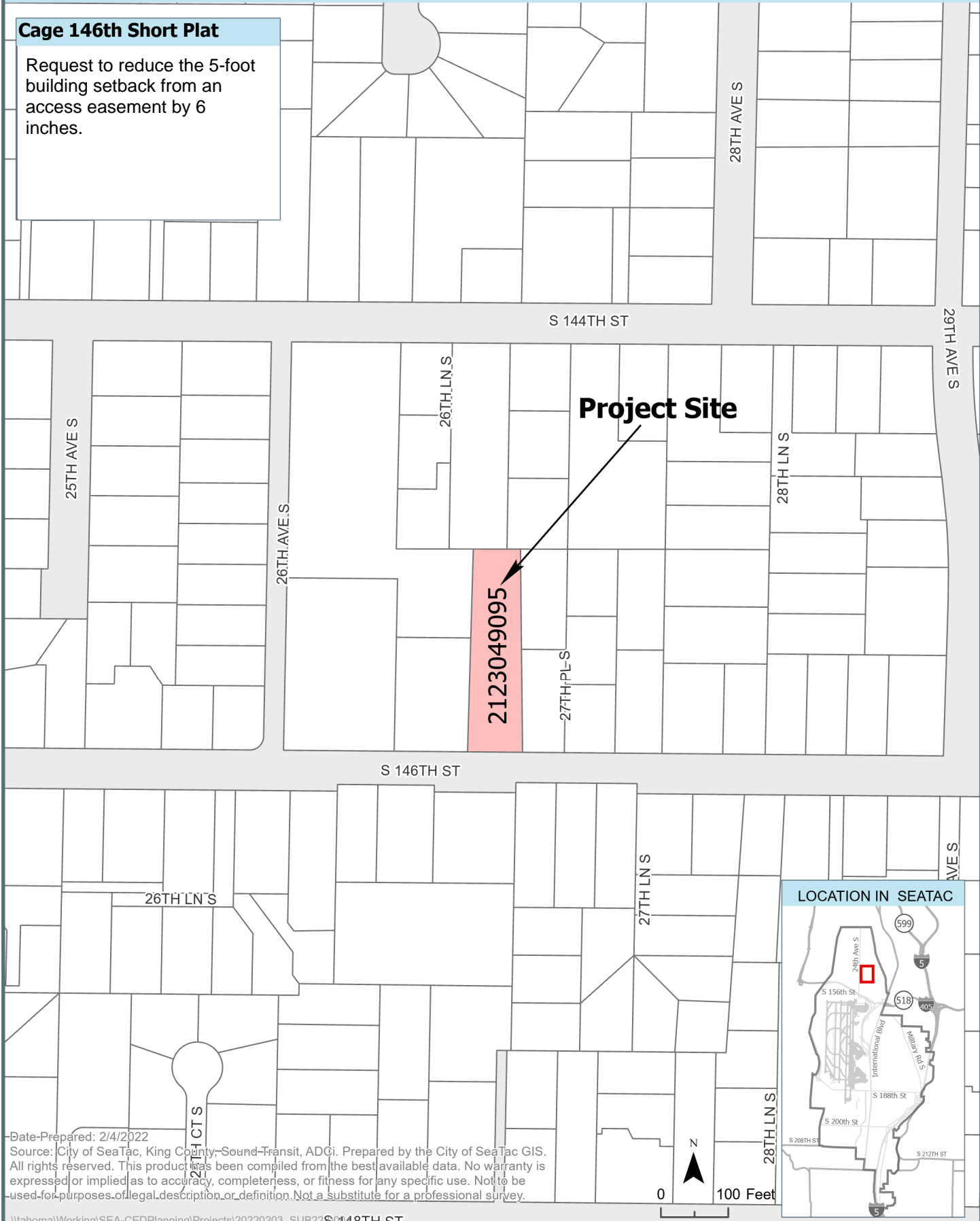
**VICINITY MAP**

VAR22-0008



**Cage 146th Short Plat**

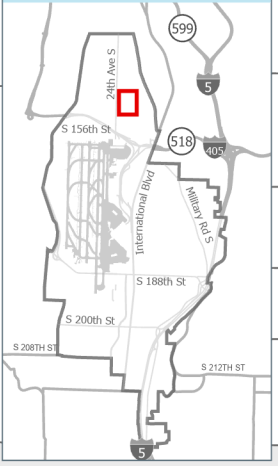
Request to reduce the 5-foot building setback from an access easement by 6 inches.



**Project Site**

2123049095

**LOCATION IN SEATAC**



Date Prepared: 2/4/2022  
 Source: City of SeaTac, King County, Sound Transit, ADGi. Prepared by the City of SeaTac GIS.  
 All rights reserved. This product has been compiled from the best available data. No warranty is expressed or implied as to accuracy, completeness, or fitness for any specific use. Not to be used for purposes of legal description or definition. Not a substitute for a professional survey.

