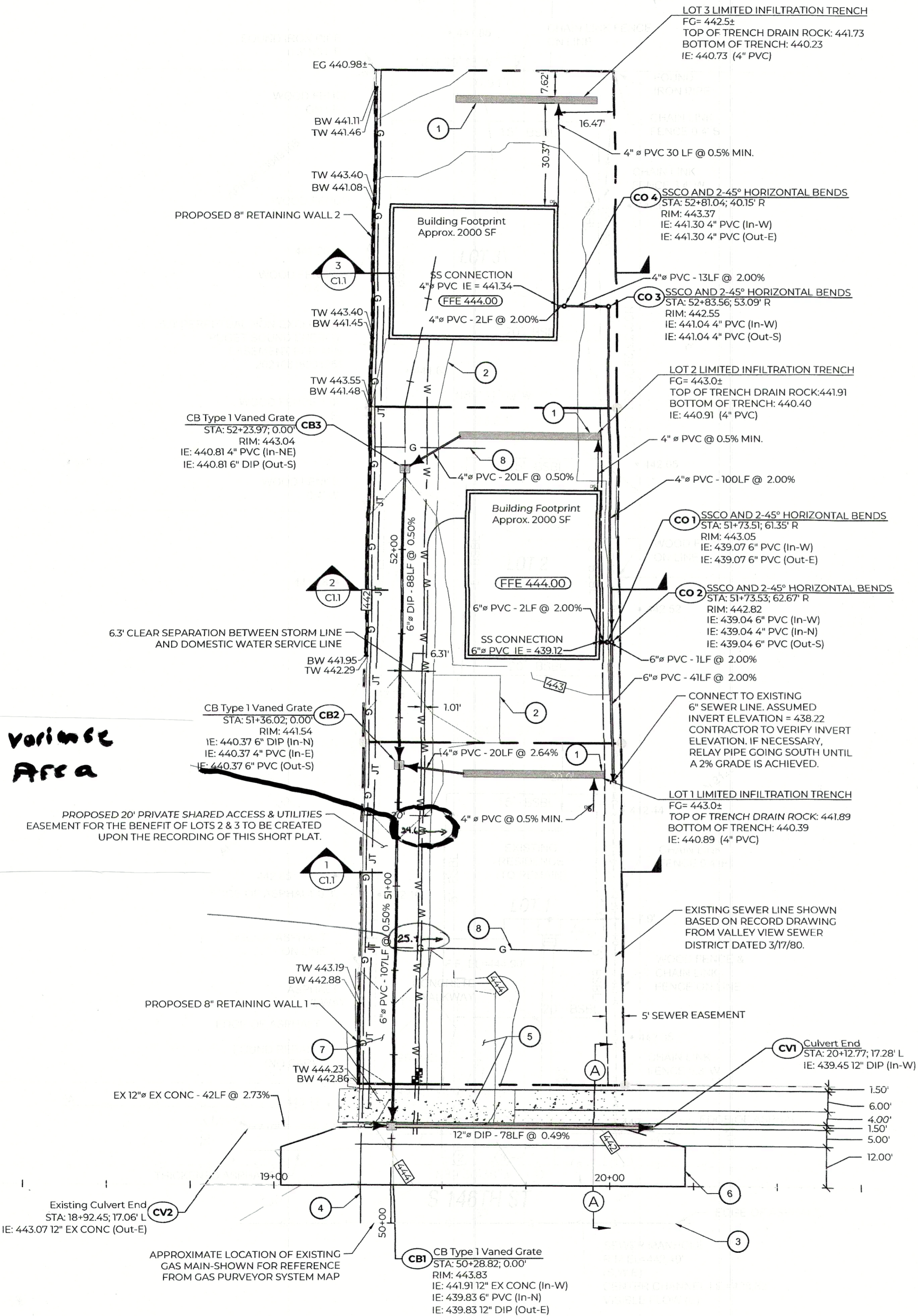


CIVIL LEGEND

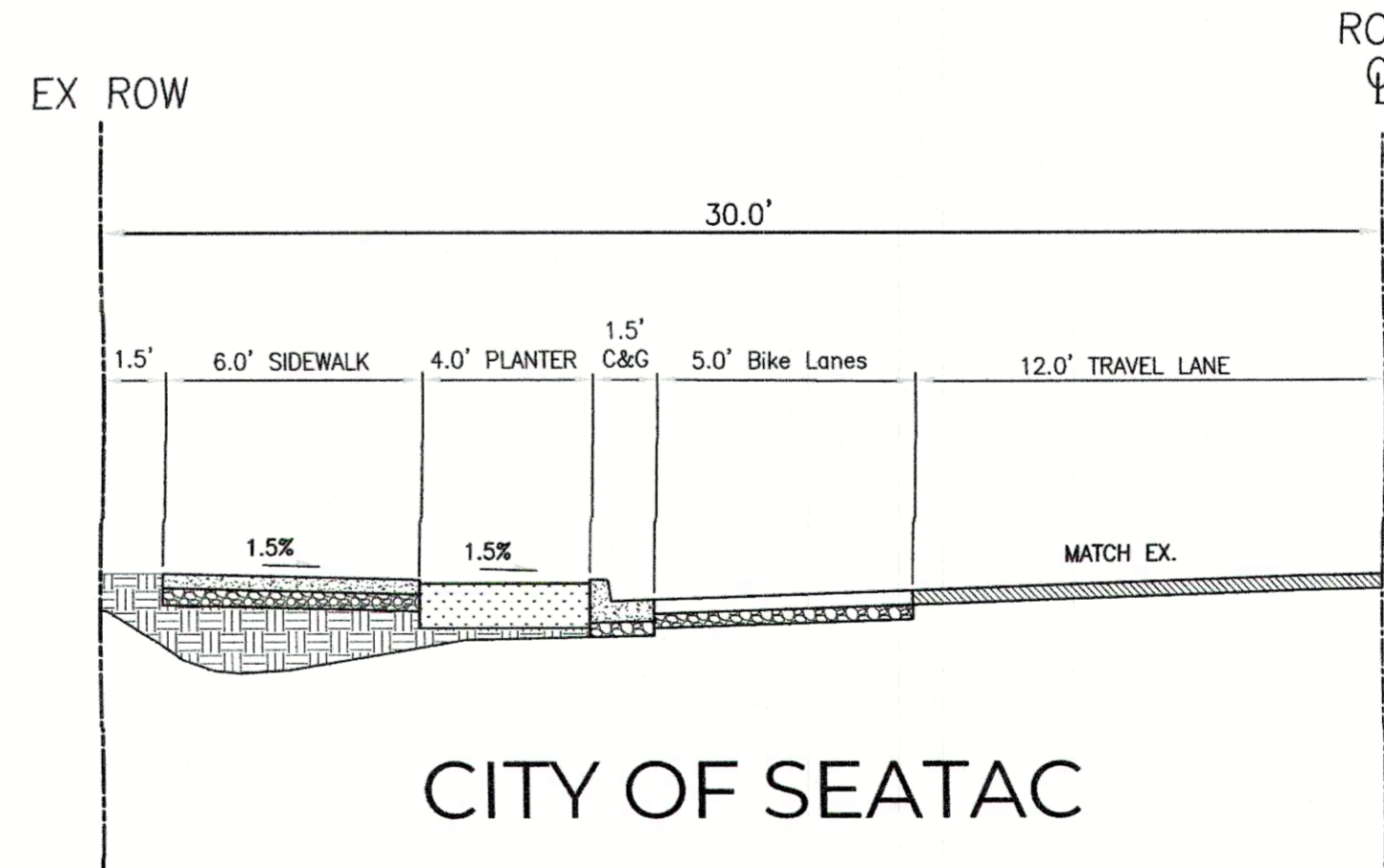
- BUILDING FOOTPRINT
- PROPERTY BOUNDARY
- BUILDING SETBACK LINE
- EXISTING MINOR CONTOUR
- EXISTING MAJOR CONTOUR
- PROPOSED MINOR CONTOUR
- PROPOSED MAJOR CONTOUR
- STORM DRAINAGE LINE
- WATER SERVICE LINE
- SEWER SERVICE LINE
- FLOWLINE
- SSMH/SSCO
- SDCO/YD/CB1/CB2/SDMH
- FIRE HYDRANT/FDC/METER/FITTINGS
- EXISTING CONCRETE
- EXISTING GRAVEL
- NEW HMA PAVEMENT
- NEW CONCRETE SIDEWALK/DRIVEWAY
- PERVIOUS PAVEMENT
- LANDSCAPING
- LIMITED INFILTRATION TRENCH
- JOINT UTILITY TRENCH
- GAS SERVICE LINE

CIVIL KEYNOTES

- 1 42-FOOT LONG, 2-FOOT WIDE LIMITED INFILTRATION TRENCHES (KC FLOW CONTROL BMP C.2.3.3) TO SERVE 2000 SF OF IMPERVIOUS ROOF AREA ON EACH LOT. FOR EVERY 1000 SF OF IMPERVIOUS ROOF AREA, 21 LF OF TRENCH PROVIDED.
- 2 400 SF PERVIOUS PAVEMENT DRIVEWAY PER LOT PER KING COUNTY SWMM SECTION C.2.7.3
- 3 GAS MAIN TO BE INSTALLED BY UTILITY PURVEYOR.
- 4 PROPOSED SHARED LATERAL 4" SCHEDULE 40 GAS CONDUIT TO BE INSTALLED AT 30-36" OF COVER.
- 5 16' X 30' PERVIOUS PAVEMENT DRIVEWAY FOR EXISTING RESIDENCE PER KING COUNTY SWMM SECTION C.2.7.3. DRIVEWAY APPROACH PER FIGURE 3-004 OF KING COUNTY DESIGN AND CONSTRUCTION STANDARDS.
- 6 HALF-STREET IMPROVEMENTS PER CITY OF SEATAC OPTION 'B'.
- 7 PROPOSED 20' ACCESS AND UTILITY EASEMENT. PAVEMENT SECTIONS PER FIGURE 2-006 OF THE KING COUNTY DESIGN AND CONSTRUCTION STANDARDS. DRIVEWAY APPROACH PER FIGURE 3-004 OF KING COUNTY DESIGN AND CONSTRUCTION STANDARDS.
- 8 PROPOSED 2" GAS CONDUIT TO BE INSTALLED WITH 24" OF COVER FOR EACH RESIDENCE.



Variance Area



CITY OF SEATAC

OPTION B
NOT TO SCALE

A S 146TH ST HALF-STREET IMPROVEMENT
SCALE: NTS

NO.	DATE	REVISION DESCRIPTION

PRELIMINARY

KENNETH CAGE SHORT PLAT
CAGE CONSTRUCTION, LLC
PRELIMINARY CIVIL PLAN
2630 S 146TH ST., SEATAC, WA 98168
CITY OF SEATAC



CHECKED BY: M. PUDISTS
DESIGNED BY: M. PUDISTS
DRAWN BY: D. ZAKS
HORIZ. DATUM: NAD83 (2011)
VERT. DATUM: NAVD88
DATE: 6/13/2022
PROJECT NO. CAGE-0001
SHEET NO. 1 of 4
REFERENCE NO. C1.0

Plot Date: 6/13/2022 1:50 PM
 Save Date: 6/13/2022 1:50 PM
 By: David Zaks
 By: David Zaks
 File P:\CAGE001\10400CAD\Sheets\Prelim\PRELIMINARY PLAT PLANS-CAGE001.dwg