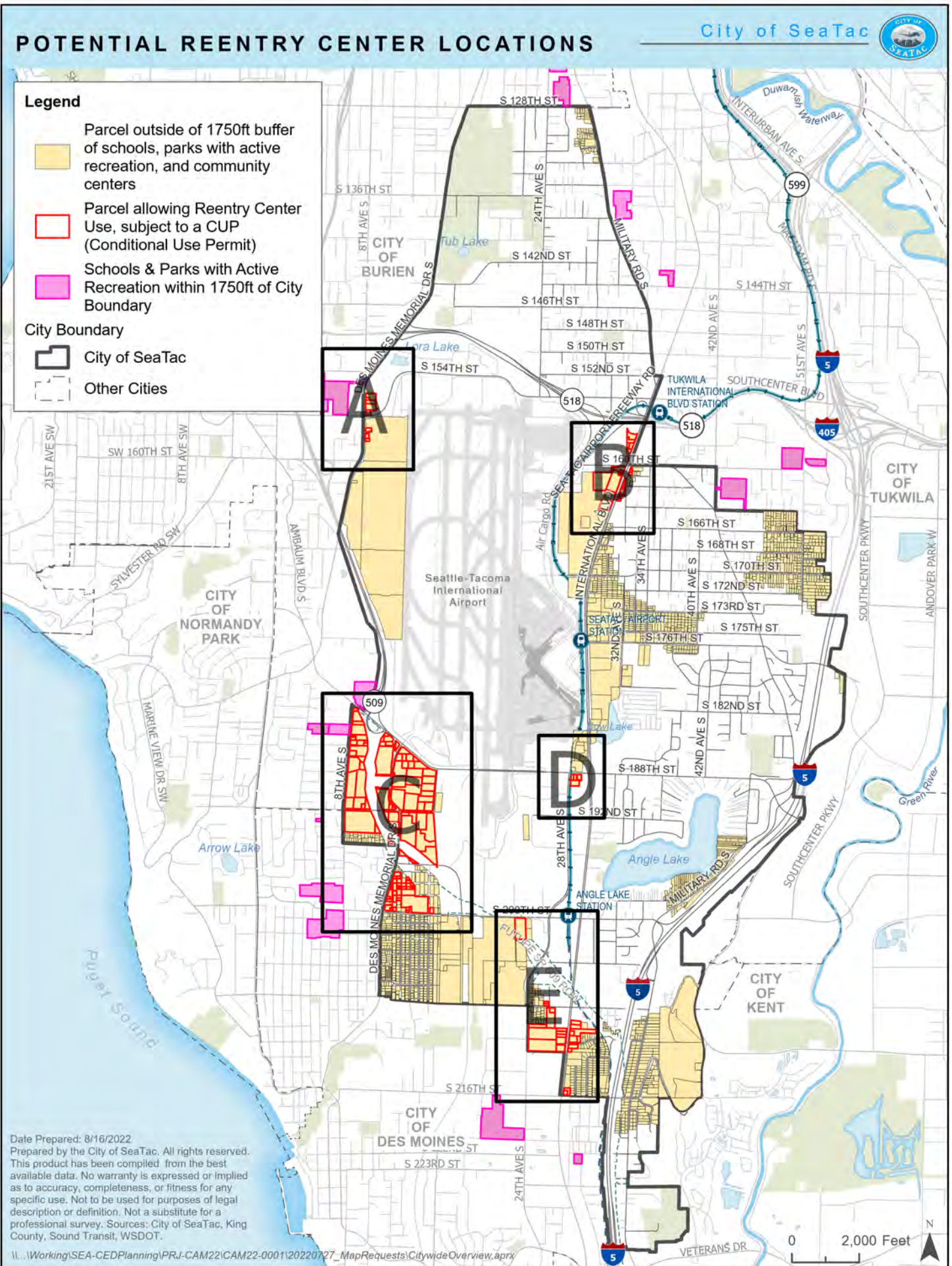


# POTENTIAL REENTRY CENTER LOCATIONS



## Legend

- Parcel outside of 1750ft buffer of schools, parks with active recreation, and community centers
  - Parcel allowing Reentry Center Use, subject to a CUP (Conditional Use Permit)
  - Schools & Parks with Active Recreation within 1750ft of City Boundary
- City Boundary
- City of SeaTac
  - Other Cities



Date Prepared: 8/16/2022  
 Prepared by the City of SeaTac. All rights reserved.  
 This product has been compiled from the best available data. No warranty is expressed or implied as to accuracy, completeness, or fitness for any specific use. Not to be used for purposes of legal description or definition. Not a substitute for a professional survey. Sources: City of SeaTac, King County, Sound Transit, WSDOT.

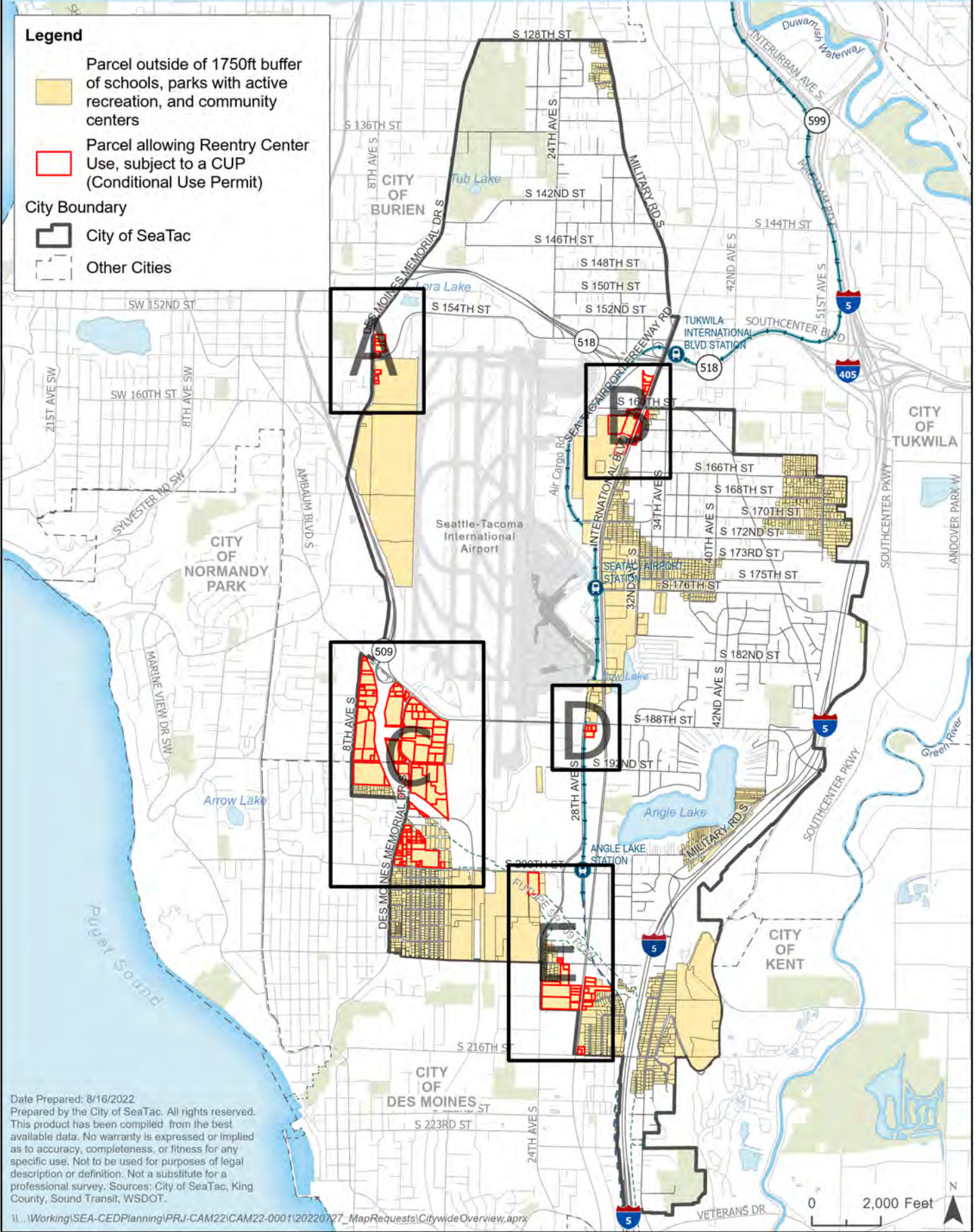


# POTENTIAL REENTRY CENTER LOCATIONS

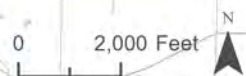


## Legend

- Parcel outside of 1750ft buffer of schools, parks with active recreation, and community centers
- Parcel allowing Reentry Center Use, subject to a CUP (Conditional Use Permit)
- City Boundary
- Other Cities



Date Prepared: 8/16/2022  
 Prepared by the City of SeaTac. All rights reserved.  
 This product has been compiled from the best available data. No warranty is expressed or implied as to accuracy, completeness, or fitness for any specific use. Not to be used for purposes of legal description or definition. Not a substitute for a professional survey. Sources: City of SeaTac, King County, Sound Transit, WSDOT.





# VICINITY MAP A

## Parcels Allowing Reentry Center Use, Subject to a CUP



**Legend**

- Light Rail Stations
- King County Metro Stops
- King County Metro Lines
- Light Rail**
- Complete
- Proposed
- Parcels Allowing Reentry Center use, Subject to a CUP (Conditional Use Permit), Parcels Zoned: CB, CB-C, RBX, I
- Overlay Districts
- City Boundary
- Zoning**
- Community Business (CB)
- Aviation Commercial (AVC)
- Aviation Operations (AVO)

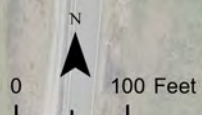
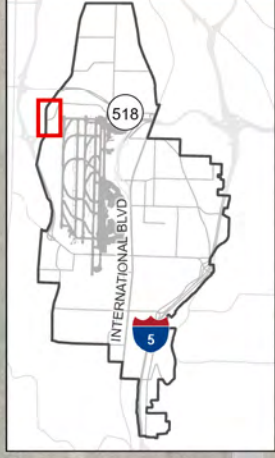
Moshier Memorial Park

CITY OF BURBURIEN  
CITY OF SEATAC  
DES MOINES MEMORIAL DR S

S 156TH ST

S 157TH PL

**LOCATION IN SEATAC**

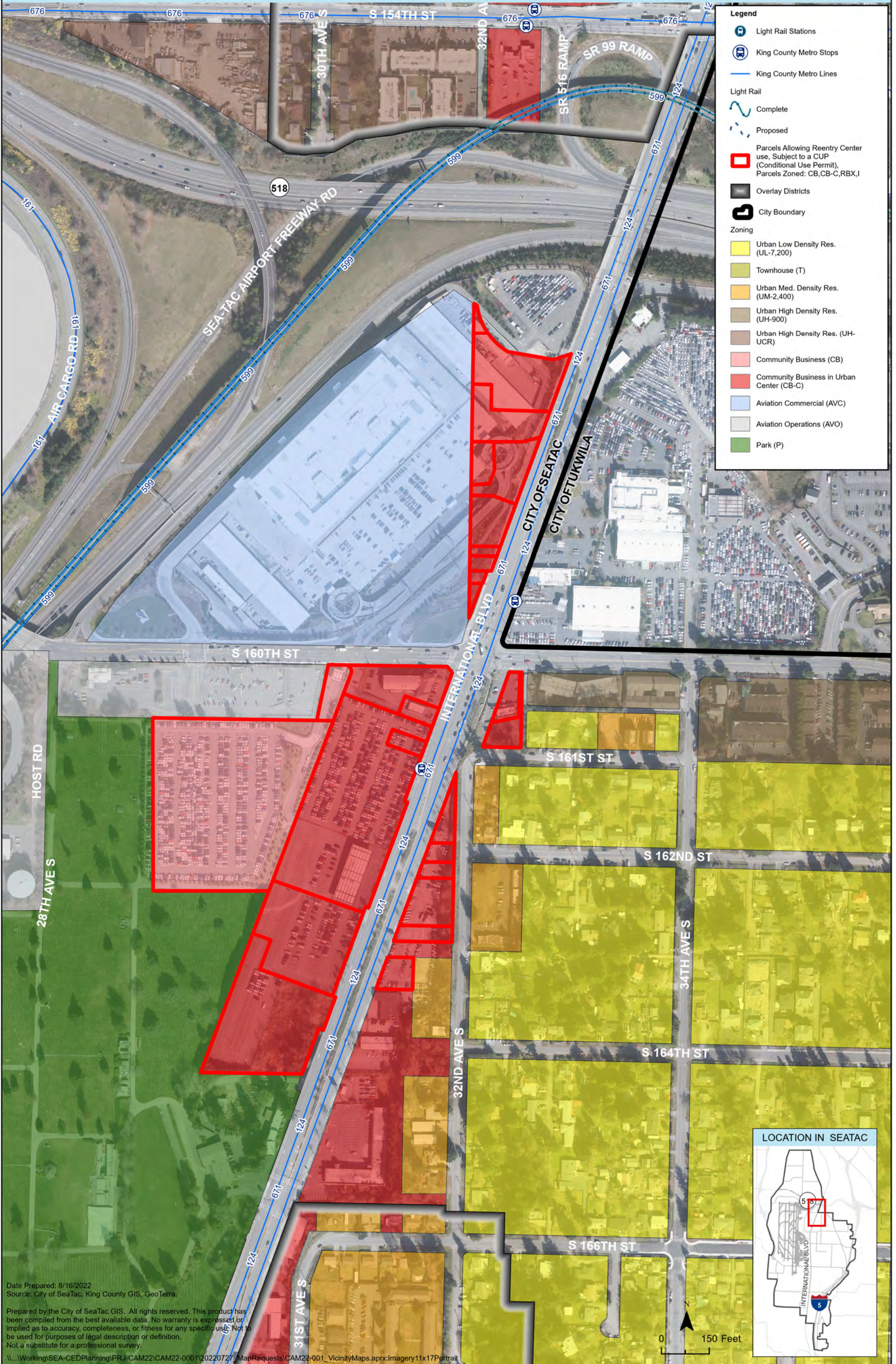


Date Prepared: 8/16/2022  
 Source: City of SeaTac, King County GIS, GeoTerra.  
 Prepared by the City of SeaTac GIS. All rights reserved. This product has been compiled from the best available data. No warranty is expressed or implied as to accuracy, completeness, or fitness for any specific use. Not to be used for purposes of legal description or definition. Not a substitute for a professional survey.  
 \\...Working\SEA-CED\Planning\PRJ-CAM22\CAM22-0001\20220727\_MapRequest\CAM22-001\_VicinityMaps.aprx:Imagery11x17Portrait












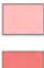
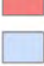







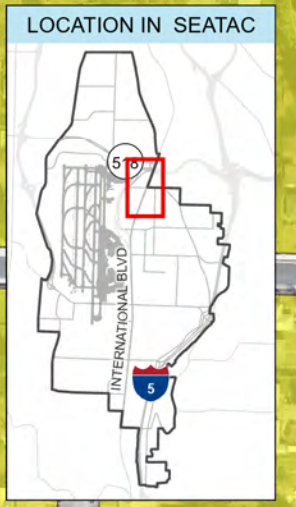
# VICINITY MAP B

## Parcels Allowing Reentry Center Use, Subject to a CUP



**Legend**

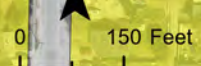
-  Light Rail Stations
-  King County Metro Stops
-  King County Metro Lines
- Light Rail**
-  Complete
-  Proposed
-  Parcels Allowing Reentry Center use, Subject to a CUP (Conditional Use Permit), Parcels Zoned: CB, CB-C, RBX, I
-  Overlay Districts
-  City Boundary
- Zoning**
-  Urban Low Density Res. (UL-7,200)
-  Townhouse (T)
-  Urban Med. Density Res. (UM-2,400)
-  Urban High Density Res. (UH-900)
-  Urban High Density Res. (UH-UCR)
-  Community Business (CB)
-  Community Business in Urban Center (CB-C)
-  Aviation Commercial (AVC)
-  Aviation Operations (AVO)
-  Park (P)



Date Prepared: 8/16/2022  
 Source: City of SeaTac, King County GIS, GeoTerra.

Prepared by the City of SeaTac GIS. All rights reserved. This product has been compiled from the best available data. No warranty is expressed or implied as to accuracy, completeness, or fitness for any specific use. Not to be used for purposes of legal description or definition. Not a substitute for a professional survey.

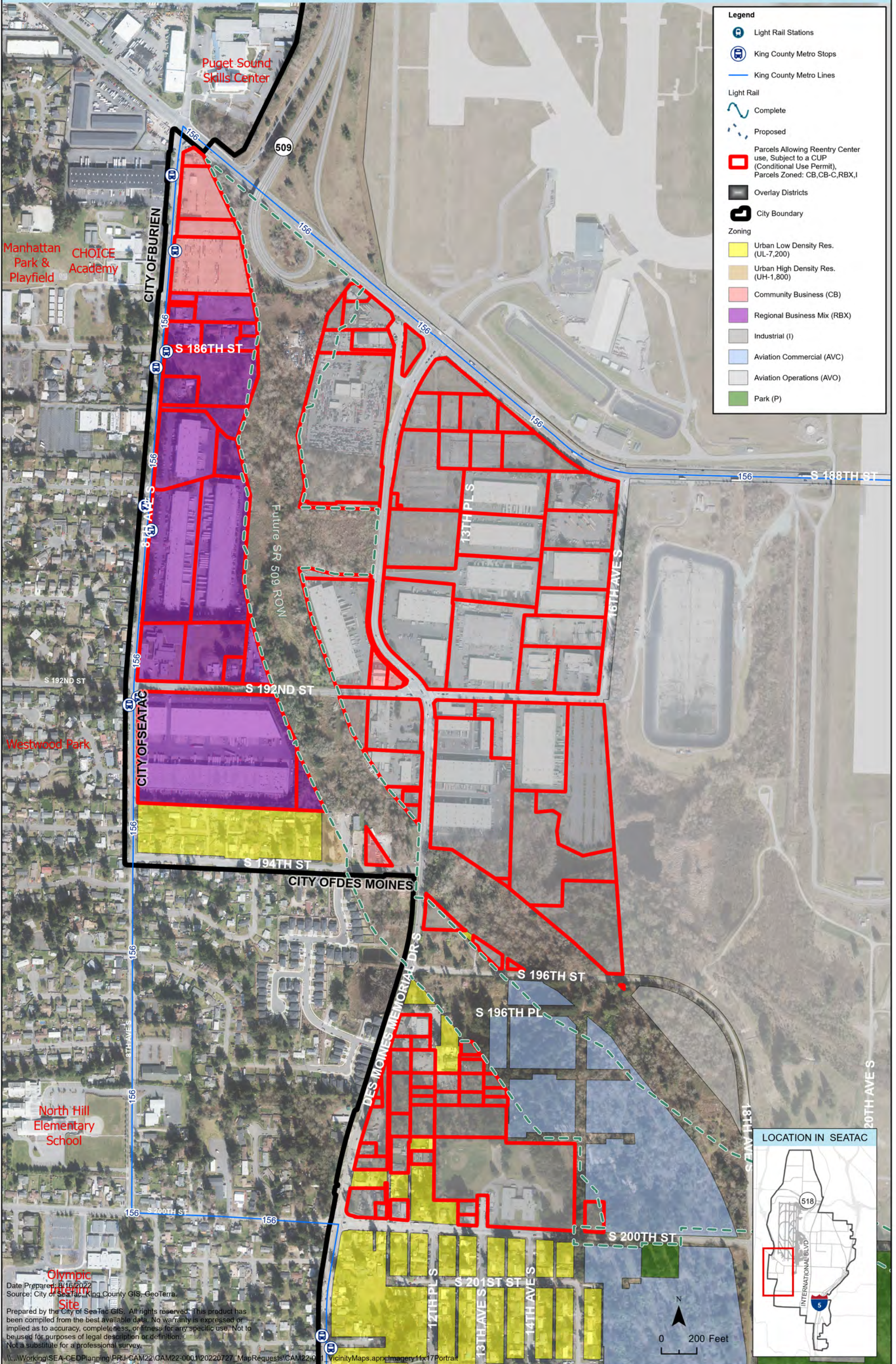
\\...Working\SEA-CED\Planning\PRJ-CAM22\CAM22-0001\20220727\_MapRequests\CAM22-001\_VicinityMaps.aprx:Imagery11x17Portrait





# VICINITY MAP C

## Parcels Allowing Reentry Center Use, Subject to a CUP



**Legend**

- Light Rail Stations
- King County Metro Stops
- King County Metro Lines
- Light Rail**
- Complete
- Proposed
- Parcels Allowing Reentry Center use, Subject to a CUP (Conditional Use Permit), Parcels Zoned: CB, CB-C, RBX, I
- Overlay Districts
- City Boundary
- Zoning**
- Urban Low Density Res. (UL-7,200)
- Urban High Density Res. (UH-1,800)
- Community Business (CB)
- Regional Business Mix (RBX)
- Industrial (I)
- Aviation Commercial (AVC)
- Aviation Operations (AVO)
- Park (P)



Date Prepared: 8/16/2022  
 Source: City of SeaTac, King County GIS, GeoTerra

Prepared by the City of SeaTac GIS. All rights reserved. This product has been compiled from the best available data. No warranty is expressed or implied as to accuracy, completeness, or fitness for any specific use. Not to be used for purposes of legal description or definition. Not a substitute for a professional survey.

WorkingSEA-CEDPlanning\PRJ-CAM22\CAM22-0001\20220727\_MapRequests\CAM22-01\_VicinityMaps.aprx;imagery11x17Portrait

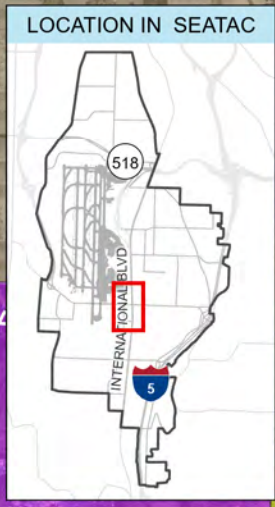
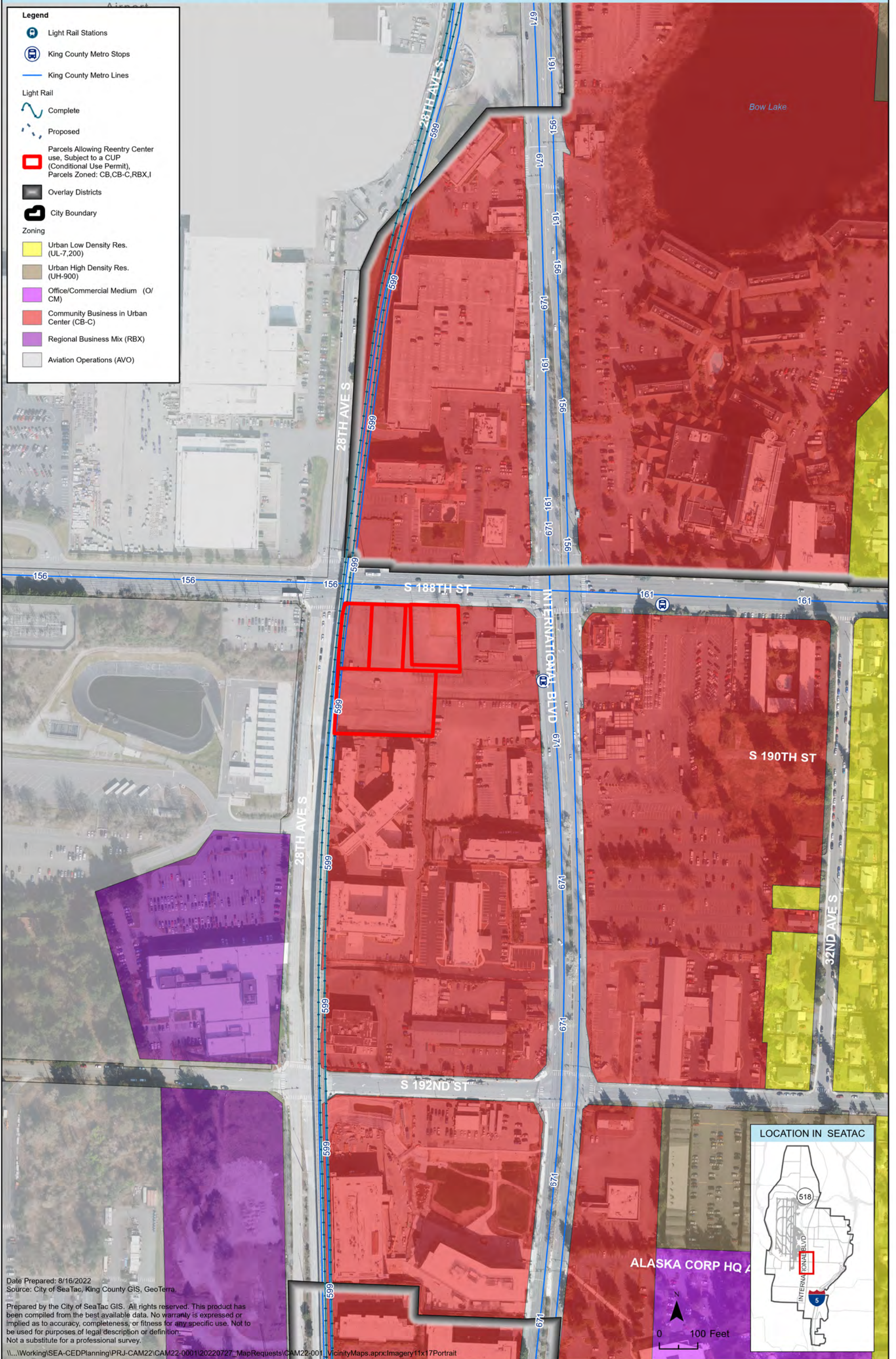


# VICINITY MAP D

## Parcels Allowing Reentry Center Use, Subject to a CUP



- Legend**
- Light Rail Stations
  - King County Metro Stops
  - King County Metro Lines
  - Light Rail**
  - Complete
  - Proposed
  - Parcels Allowing Reentry Center use, Subject to a CUP (Conditional Use Permit), Parcels Zoned: CB, CB-C, RBX, I
  - Overlay Districts
  - City Boundary
  - Zoning**
  - Urban Low Density Res. (UL-7,200)
  - Urban High Density Res. (UH-900)
  - Office/Commercial Medium (O/CM)
  - Community Business in Urban Center (CB-C)
  - Regional Business Mix (RBX)
  - Aviation Operations (AVO)



Date Prepared: 8/16/2022  
 Source: City of SeaTac, King County GIS, GeoTerra.

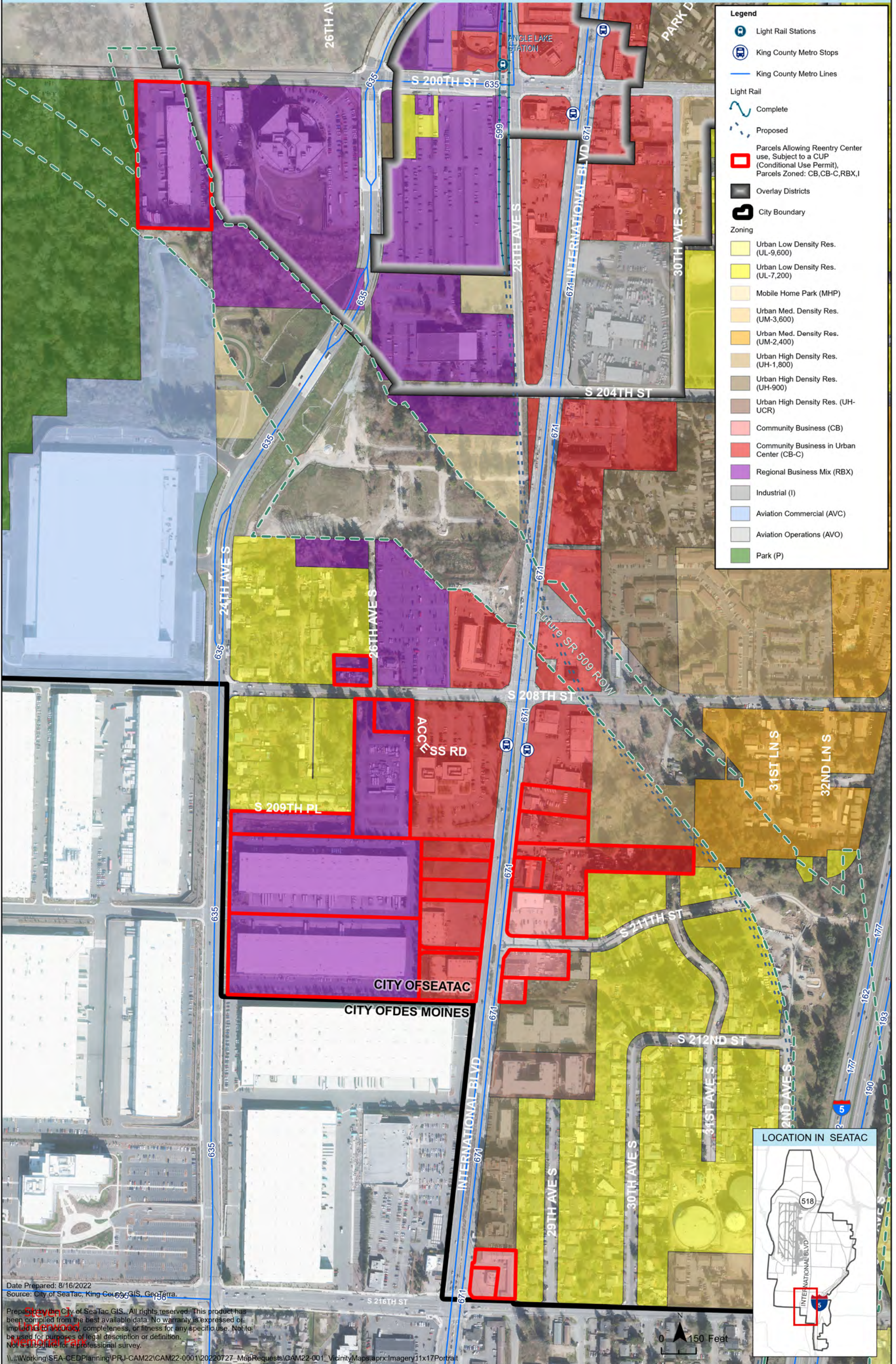
Prepared by the City of SeaTac GIS. All rights reserved. This product has been compiled from the best available data. No warranty is expressed or implied as to accuracy, completeness, or fitness for any specific use. Not to be used for purposes of legal description or definition. Not a substitute for a professional survey.

\\...Working\SEA-CED\Planning\PRJ-CAM22\CAM22-0001\20220727\_MapRequests\CAM22-001\_VicinityMaps.aprx:Imagery11x17Portrait



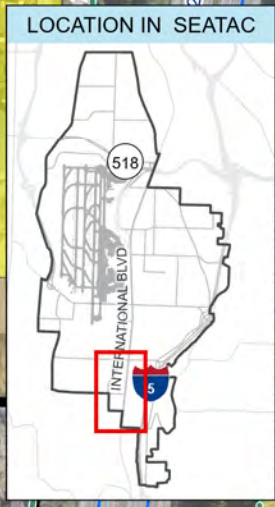
# VICINITY MAP E

## Parcels Allowing Reentry Center Use, Subject to a CUP



**Legend**

- Light Rail Stations
- King County Metro Stops
- King County Metro Lines
- Light Rail**
- Complete
- Proposed
- Parcels Allowing Reentry Center use, Subject to a CUP (Conditional Use Permit), Parcels Zoned: CB, CB-C, RBX, I
- Overlay Districts
- City Boundary
- Zoning**
- Urban Low Density Res. (UL-9,600)
- Urban Low Density Res. (UL-7,200)
- Mobile Home Park (MHP)
- Urban Med. Density Res. (UM-3,600)
- Urban Med. Density Res. (UM-2,400)
- Urban High Density Res. (UH-1,800)
- Urban High Density Res. (UH-900)
- Urban High Density Res. (UH-UCR)
- Community Business (CB)
- Community Business in Urban Center (CB-C)
- Regional Business Mix (RBX)
- Industrial (I)
- Aviation Commercial (AVC)
- Aviation Operations (AVO)
- Park (P)



Date Prepared: 8/16/2022  
 Source: City of SeaTac, King County GIS, GeoTerra  
 Prepared by the City of SeaTac GIS. All rights reserved. This product has been compiled from the best available data. No warranty is expressed or implied as to accuracy, completeness, or fitness for any specific use. Not to be used for purposes of legal description or definition. Not a substitute for a professional survey.  
 \\...Working\SEA-CED\Planning\PRJ-CAM22\CAM22-0001\20220727\_MapRequests\CAM22-001\_VicinityMaps.aprx;Imagery11x17Portrait

