

STORMWATER MANAGEMENT ACTION PLANNING

May 19, 2022 Transportation & Public Works Committee





STORMWATER MANAGEMENT ACTION PLANNING

May 19, 2022



PRESENTATION OVERVIEW

PURPOSE OF PRESENTATION

To brief the Committee, and interested members of the public, regarding the Stormwater Management Action Planning (SMAP) project currently being developed by the City and its consultant. Specifically, the presentation will include a brief review of the SMAP schedule and required Ecology submittals, including a Receiving Water Assessment, Basin Ranking and Prioritization, and Action Plan.

WHY IS THIS ISSUE IMPORTANT?

1. The work is required by the City's NPDES Western Washington Municipal Stormwater Permit.
2. The meeting is an opportunity for soliciting input from the community.
3. The SMAP will provide direction on protecting and enhancing the City's waterbodies



PERMIT-REQUIRED WORK

- Permit-required Stormwater Management Action Planning is a phased effort that must be completed no later than March 31, 2023.

Issuance Date: July 1, 2019
Effective Date: August 1, 2019
Expiration Date: July 31, 2024

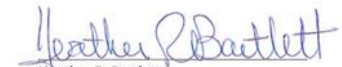
Western Washington Phase II Municipal Stormwater Permit

National Pollutant Discharge Elimination System and
State Waste Discharge General Permit for discharges from
Small Municipal Separate Storm Sewers
In Western Washington

State of Washington
Department of Ecology
Olympia, WA 98504-7600

In compliance with the provisions of
The State of Washington Water Pollution Control Law
Chapter 90.48 Revised Code of Washington
and
The Federal Water Pollution Control Act
(The Clean Water Act)
Title 33 United States Code, Section 1251 *et seq.*

Until this Permit expires, is modified, or revoked, Permittees that have properly obtained coverage under this Permit are authorized to discharge to waters of the State in accordance with the special and general conditions which follow.


Heather R. Bartlett
Water Quality Program Manager
Department of Ecology

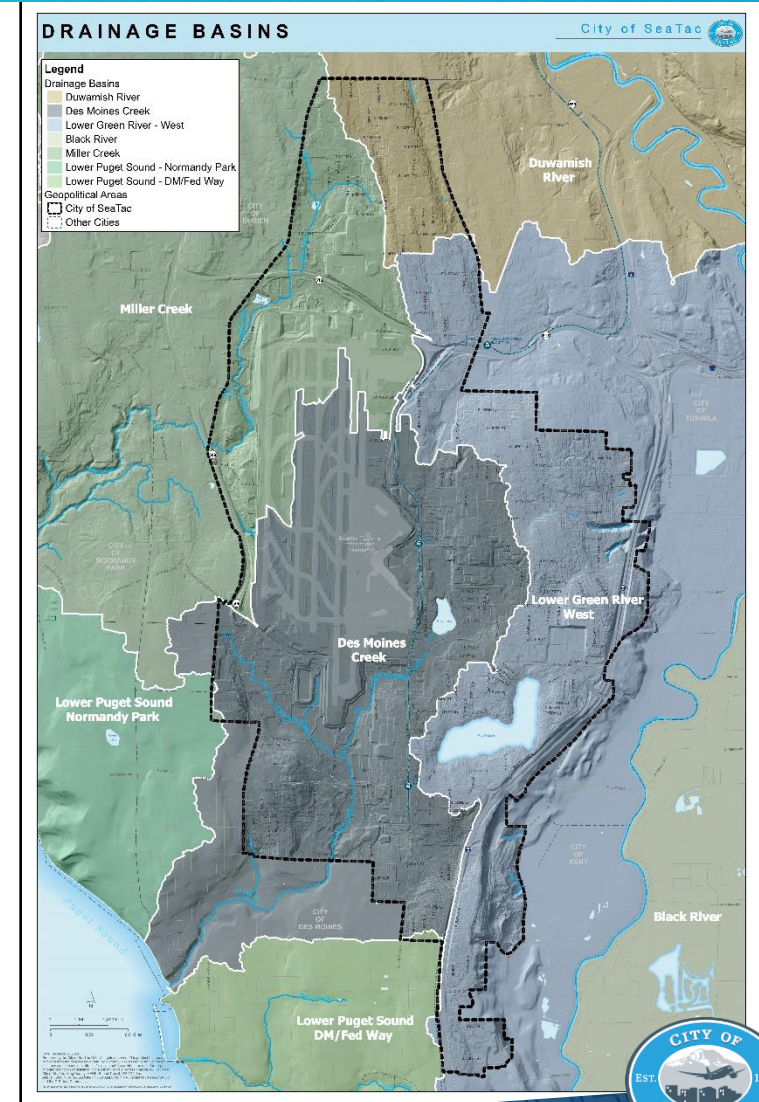


STORMWATER ACTION PLANNING — THREE ELEMENTS

SMAP is designed to inform and assist in the long-term development of policies, strategies, and water quality management tools designed to protect SeaTac receiving waters.

Ecology-Required Steps:

1. Watershed Delineation/Receiving Water Inventory (03/31/2022)
2. Receiving Water Assessment: Ranking and Prioritization (06/30/2022)
3. Final Stormwater Management Action Plan (03/21/2023)



RANKING AND PRIORITIZATION

How are the preferred drainage areas defined and prioritized?

- Basin definition and delineation – about 1 square mile, follows natural drainage areas
- Delineate and map basin land uses and impervious surfaces
- Score land use impacts and stormwater controls
- Rank and prioritize drainage basins

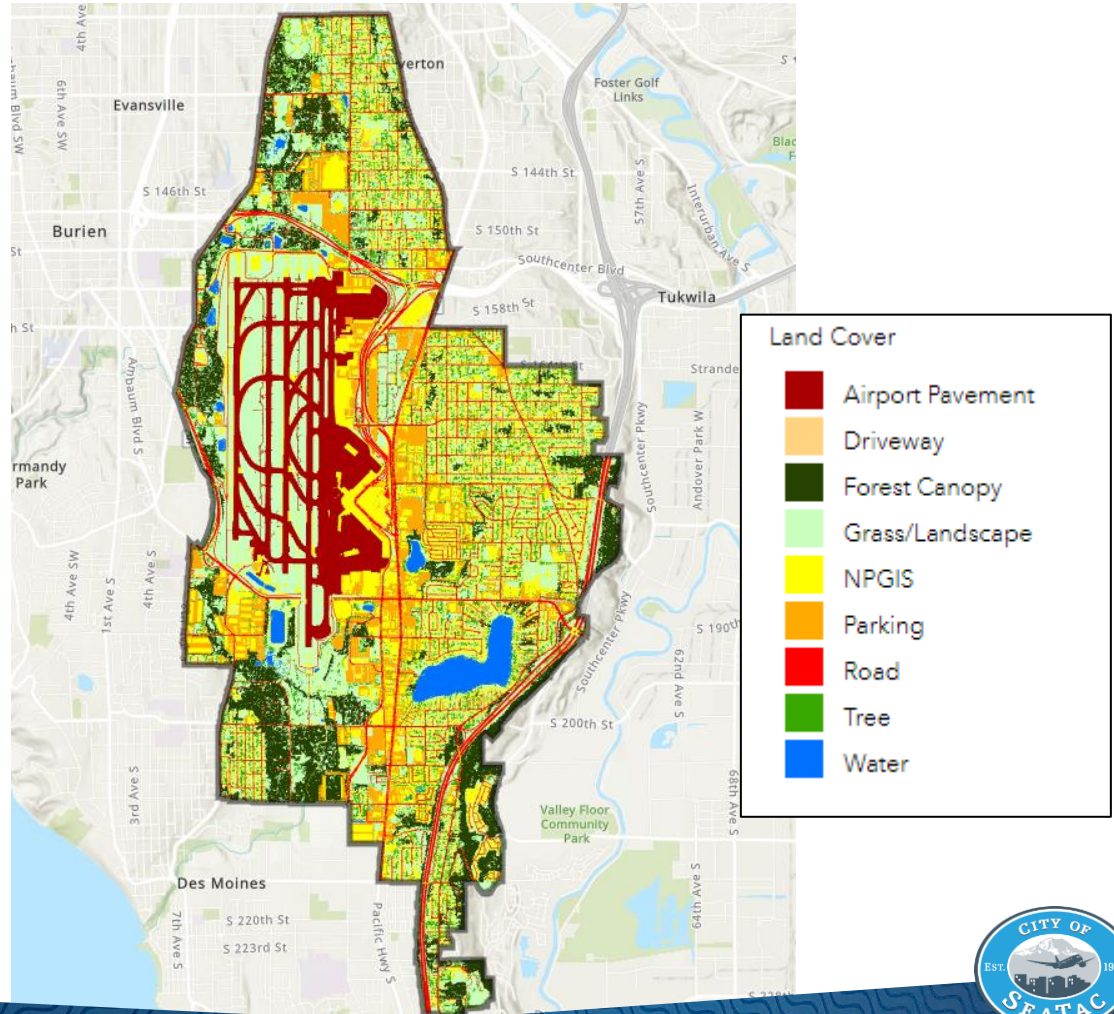


EXISTING BASIN SCORES

SMAP basins are given water quality and flow controls scores on a scale of 1-100

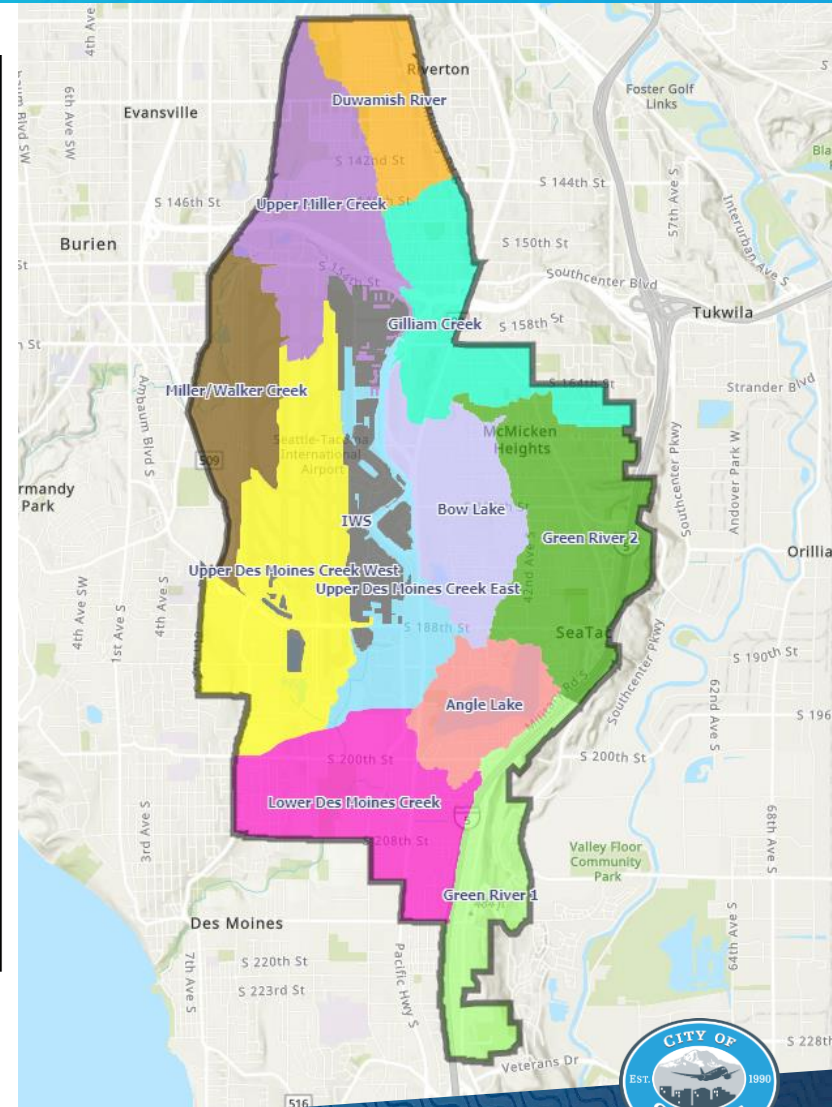
Scoring Components

1. Land Cover Type (including impervious surfaces)
2. Existing stormwater treatment



SMAP DRAINAGE BASINS AND SCORING

	Current Score			
	Water Quality	Flow Control	Average Score	
	Existing Score	Existing Score		
Bow Lake	◆ 44	◆ 43	◆ 44	
Gilliam Creek	◆ 47	◆ 47	◆ 47	
Angle Lake	◆ 49	◆ 49	◆ 49	
Green River 2	◆ 51	◆ 51	◆ 51	
Duwamish River	◆ 53	◆ 53	◆ 53	
Lower Des Moines Creek	◆ 61	◆ 61	◆ 61	
Upper Des Moines Creek	◆ 62	◆ 62	◆ 62	
Green River 1	▲ 66	◆ 65	▲ 65	
Upper Miller Creek	▲ 69	▲ 69	▲ 69	
Upper Des Moines Creek	● 80	● 80	● 80	
Miller/Walker Creek	● 81	● 81	● 81	
IWS	● 89	● 89	● 89	



OTHER KEY PRIORITIZATION FACTORS

SMAP basins are screened by given water quality and flow controls scores on a scale of 1-100.

Other factors applied to prioritize screened basins:

1. Equity and under-served communities
2. Capital projects and drainage problem areas
3. Redevelopment plans, growth centers, transit
4. Existing water quality or flooding problems
5. Community support and preferences



PROVIDE YOUR COMMENTS

Public Involvement Storymap:

SeaTac Stormwater Management Action Planning (SMAP)

The City of SeaTac is committed to clean water, and we need your help! See how you can get involved.

Scroll down to get started!

[Why Are We Doing SMAP](#) [What is Runoff](#) [Community Benefit](#) [SMAP Process](#) [Maps](#) [Equity](#) [Get Involved!](#)



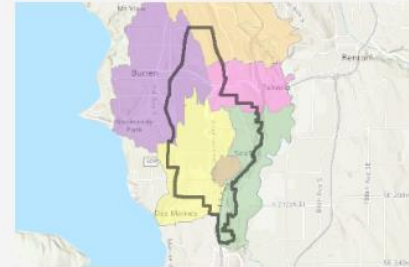
Why is SeaTac going through this Stormwater Management Action Planning (SMAP) process?

COMMUNITY INPUT NEEDED!

City of SeaTac SMAP - Public Input Map

Click here to explore project information in an interactive map and drop comment pins to provide your input!

<https://parametrix.maps.arcgis.com>



SMAP Public Survey - City of SeaTac

The goal of this survey is to understand and consider your priorities as part of the SMAP process.

<https://survey123.arcgis.com>



COMMUNITY INPUT NEEDED!

COMMENT TODAY

- Committee members
- Community members/stakeholders

PUBLIC SURVEY

- Website – closes May 27, 2022

PUBLIC INPUT MAP

- Storymap – open now through June 15, 2022

COMMENT LATER

- Send your comments to the contact portals – open now through March 31, 2023



FUTURE COMMUNITY INPUT OPPORTUNITIES

FUTURE COMMENT OPPORTUNITIES

- Watch the webpage for additional information
- Comment portals always open
- Future meeting – July/August Draft Plan overview

- Contact Dan Smith
dsmith@seatacwa.gov
206 973-5059



POTENTIAL COMMITTEE ACTION

COMMITTEE ACTION REQUESTED

- Staff requests the Committee to provide input on the SMAP process and findings to date.

