


# City of SeaTac Sidewalk Update

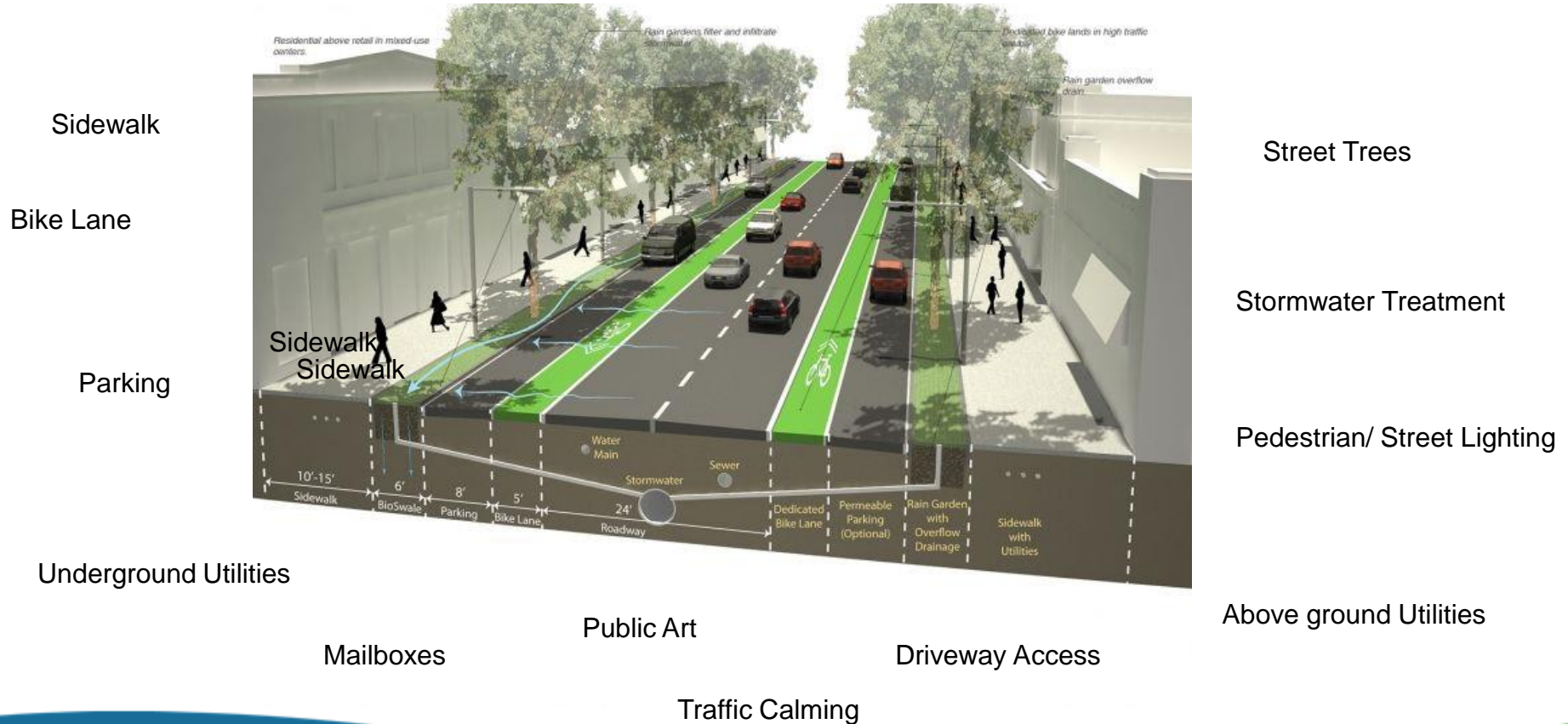
*April 21, 2022*



# Program Goals

- **Consider all users and transportation modes**
  - **Improve pedestrian lighting**
  - **Support walking and bicycling as viable modes of transport**
  - **Improve neighborhood aesthetics and livability**
  - **Provide for people with disabilities**
  - **Provide green infrastructure in our neighborhoods**
  - **Provide projects that support increased property values**
- 

# Anatomy of a Street



# SeaTac Neighborhoods – Existing Conditions



# SeaTac Neighborhoods – Existing Conditions





# Completed Sidewalk Project

S 164<sup>th</sup> Street, between 34<sup>th</sup> Ave s. & Military Rd



# Completed Sidewalk Projects

32<sup>nd</sup> Avenue South, South 192<sup>nd</sup> Street to South 188<sup>th</sup> Street





# Completed Sidewalk Projects

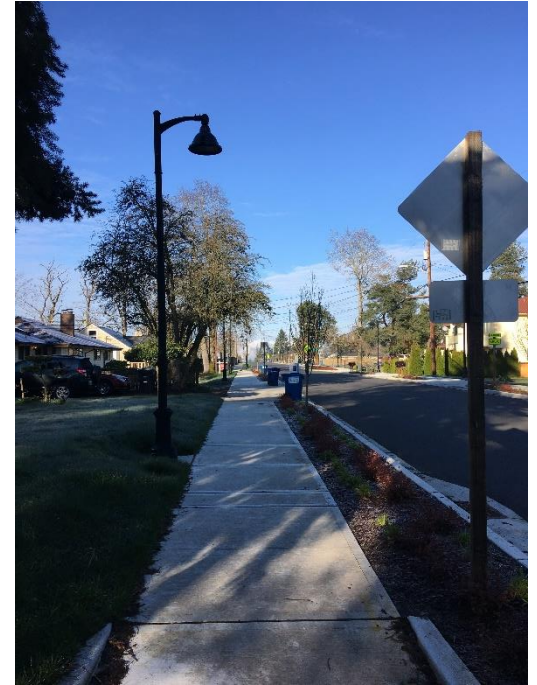
37<sup>th</sup>/40<sup>th</sup> Avenue South, South 172<sup>nd</sup> Street to South 166<sup>th</sup> Street

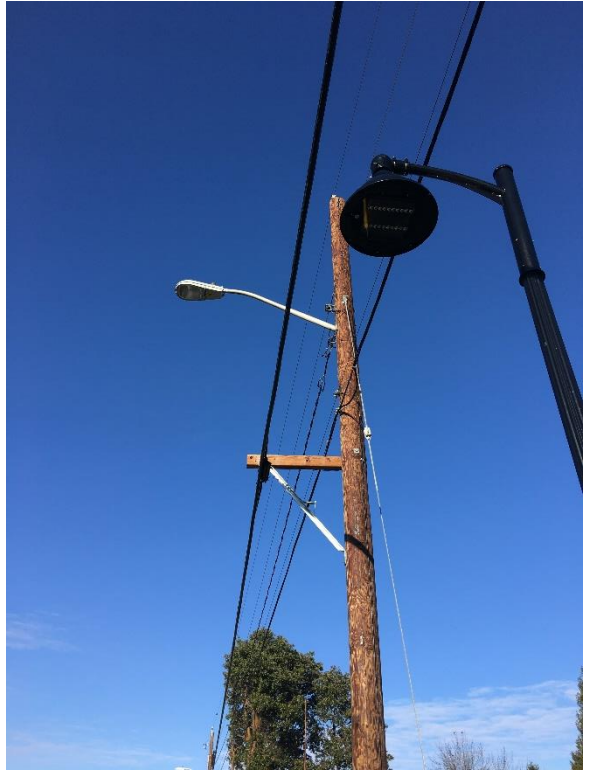




# Completed Sidewalk Projects

South 166<sup>th</sup> Street, 34<sup>th</sup> Ave South to Military Road South





# Sidewalk Specific Projects Completed Since 2009

• <b>42<sup>nd</sup> Avenue South</b> , South 188 <sup>th</sup> Street to South 176 <sup>th</sup> Street	(3,928 ft)
• <b>South 138<sup>th</sup> Street</b> , Military Road South to 24 <sup>th</sup> Avenue South	(1,930 ft)
• <b>South 164<sup>th</sup> Street</b> , 34 <sup>th</sup> Avenue South to Military Road South	(1,850 ft)
• <b>South 168<sup>th</sup> Street</b> , Military Road South to 34 <sup>th</sup> Avenue South	(2,227 ft)
• <b>South 179<sup>th</sup> Street</b> , Military Road South to 42 <sup>nd</sup> Avenue South	(1,900 ft)
• <b>37<sup>th</sup>/40<sup>th</sup> Avenue South</b> , South 172 <sup>nd</sup> Street to South 166 <sup>th</sup> Street	(2,400 ft)
• <b>32<sup>nd</sup> Avenue South</b> , South 192 <sup>nd</sup> Street to South 188 <sup>th</sup> Street	(1,300 ft)
• <b>South 166<sup>th</sup> Street</b> , 34 <sup>th</sup> Ave South to Military Road South	(2,038 ft)
• <b>South 200<sup>th</sup> Street Multi-modal Path</b> , 12 <sup>th</sup> PI South to Des Moines Creek Trailhead	(3,060 ft)
• <b>34<sup>th</sup> Ave South</b> , South 160 <sup>th</sup> Street to South 166 <sup>th</sup> Street ( <i>Under construction</i> )	(1,233 ft)
<b>Total</b>	<b>(21,866 ft)</b>

# Recent CIP & Private Development Projects that have added sidewalks/pedestrian path

• South 152 <sup>nd</sup> and Military Complete Street Project	(832 ft)
• Des Moines and S 200 <sup>th</sup> Street Intersection Improvements	(1,280 ft)
• 2018 Overlay Project on Military Rd South	(1,200 ft)
• Air Cargo Rd and S 170 <sup>th</sup> Street Improvements (Airport Project)	(894 ft)
• 32 <sup>nd</sup> Ave S - S 212 St south to terminus (Sound Transit )	(519 ft)
• S 180 <sup>th</sup> St Flood Reduction Project – S 180 <sup>th</sup> St to S 182 <sup>nd</sup> St	(620 ft)
• River Ridge Elementary Frontage Improvements (Kent Schools)	(350 ft)
Total	(5,695 ft)

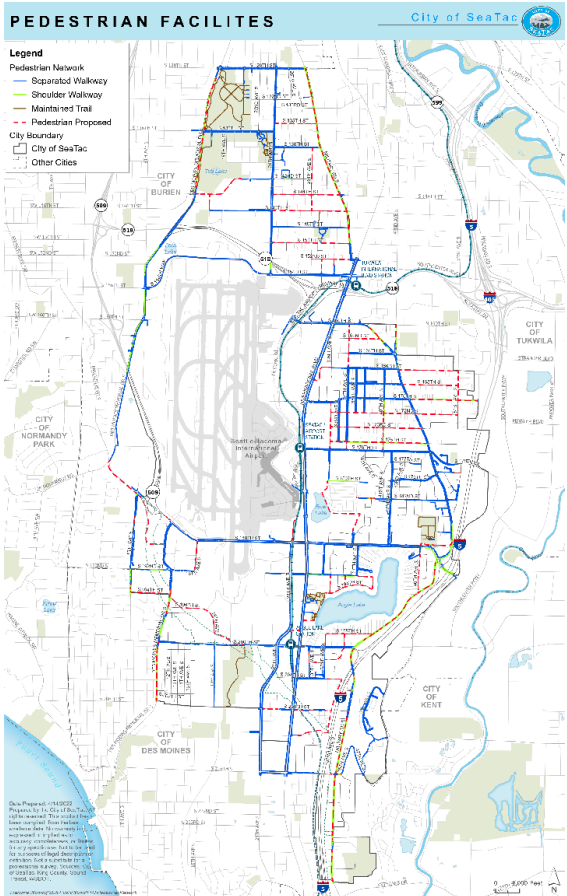




# Upcoming Projects that will add Sidewalks

•	River Ridge Elementary Sidewalk Project – S 224 <sup>th</sup> St to S 229 <sup>th</sup> PI	(1,500 ft)
•	Airport Station Area Pedestrian Project – 32 <sup>nd</sup> Ave S/ S180 <sup>th</sup> St and S 176 <sup>th</sup> St	(5,900 ft)
•	34 <sup>th</sup> Ave South Complete Street - S 204 <sup>th</sup> St to S 208 <sup>th</sup> St	(1,375 ft)
•	S 204 <sup>th</sup> Street Complete Street – 32 <sup>nd</sup> Ave S to 34 <sup>th</sup> Ave S	(700 ft)
•	S 206 <sup>th</sup> / S 208 <sup>th</sup> Street Complete Street – IB to 34 <sup>th</sup> Ave S	(1,834 ft)
•	S 216 <sup>th</sup> Street - I-5 to Military Rd S	(230ft)
	Total	(11,539 ft)

# Summary of sidewalks in SeaTac April 2022



Projects Completed Since 2009	4.1 miles
Recent Capital Projects	1.1 miles
Upcoming Projects	2.2 miles
	<hr/>
	7.4 miles

Miles of streets in SeaTac1	163 miles
Miles of sidewalks in SeaTac	55.25 miles
Miles of shoulder walk	13 miles
Miles of trails	6.7 miles
Miles planned	22 miles

## **Upcoming Sidewalk Related Topics**

- **Pedestrian Lighting Projects**
  - **Safety Improvements along paved shoulder areas**
  - **ADA transition plan implementation**
- 

# Questions

