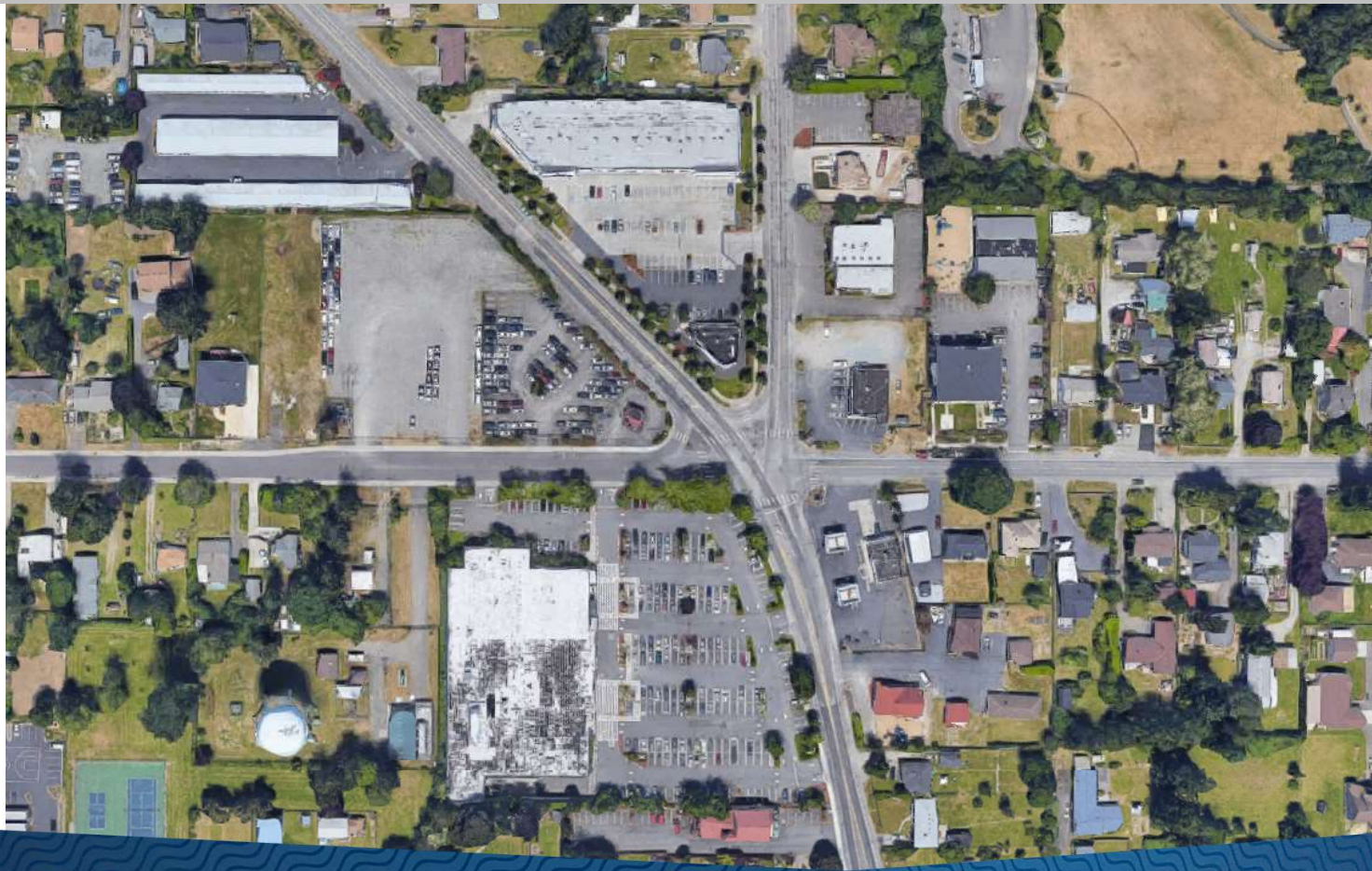


Military Road South Five-Way Intersection Study

May 6, 2021



PRESENTATION OVERVIEW

PURPOSE OF PRESENTATION

To provide an informational update on the Military Road South Five-Way Intersection Study ahead of the launch of an online open house (June 2-23).

WHY IS THIS ISSUE IMPORTANT?

1. The intersection currently has safety issues and operates at capacity during peak periods. Future development is planned in the adjacent intersection area, which will increase pressure on the intersection.
2. The City is planning for long-term capital improvements to this intersection via a study that will result in a recommended design and rebuild. Three different alternatives have been developed for the City's consideration.
3. City staff are seeking the public's feedback on the different alternatives via an online open house. The City's goal is to publicize the open house ahead of its launch date to ensure participation.



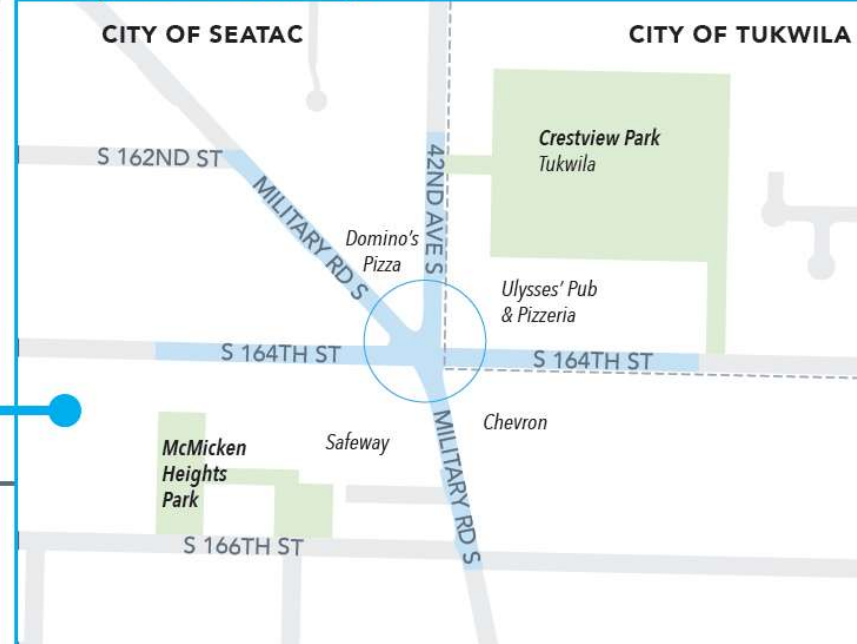
VICINITY MAP



KEY:

- City of SeaTac boundary
- Study boundaries
- Military Road five-way intersection

Project area map



AERIAL IMAGE



STUDY OVERVIEW

PURPOSE AND GOAL

- The purpose of this study is to determine the best treatment to manage all modes of travel through the five-legged intersection of Military Road South, South 164th Street, and 42nd Avenue South.
- Goal is to provide guidance on the City's future investment in the intersection

FUTURE

- Project ST-116 in the 2021-2026 Transportation Improvement Program calls for a rebuild and re-channelization of South 160th Street and Military Road from International Boulevard to South 166th Street, but it does not address this intersection specifically
- Improvement resulting from this study may become its own separate project in the future.



TIMELINE

PAST WORK

- Fall 2020 – Winter 2021: Data collection and analysis
- Winter – Spring 2021: Design concept development

NOW

- Spring 2021: Online open house and community survey

FUTURE

- Summer 2021: Final report and selection of a preferred intersection design



OPEN HOUSE CONTENT

WELCOME

- The purpose of this online open house is to provide an opportunity for you to:
- Learn about our study of this intersection.
- See the design alternatives we're considering.
- Share your feedback
 - What's important to you?
 - Which improvement strategies do you like best?



OPEN HOUSE CONTENT

PROJECT OVERVIEW

The intersection at Military Road South, South 164th Street, and 42nd Avenue South connects several important destinations between SeaTac and Tukwila. Its configuration is complex due to five approaches to the traffic signal and existing safety issues. The intersection accommodates high traffic volumes during peak morning and evening hours, and future development in the area is expected to increase the demands on the intersection.

We're evaluating several options, and we want the community to help guide improvements that make the intersection safer and more functional.

Goals

We want to design an intersection that will:

- Increase safety for all modes of travel.
- Consider traffic operations and travel times in the present and future.
- Enhance the experience of people walking and biking.
- Establish a clear visual identity that connects the neighborhood to the rest of the city.



OPEN HOUSE CONTENT

ALTERNATIVES

We want to hear from you

We're evaluating several options for improving safety, multimodal access, and traffic flow for all users. In late 2020 and early 2021, the project team collected traffic, collision, and signal timing data at and around the intersection, and engaged with people in the immediate area to inform them of the project and seek their initial input.

Based on our findings, we developed three design alternatives that we'd like your feedback on. Each alternative includes sidewalk improvements and bike lanes. At the bottom of the page is a table that compares the strategies.

Please review the alternatives and evaluation criteria, then complete the survey on the right to share your thoughts.

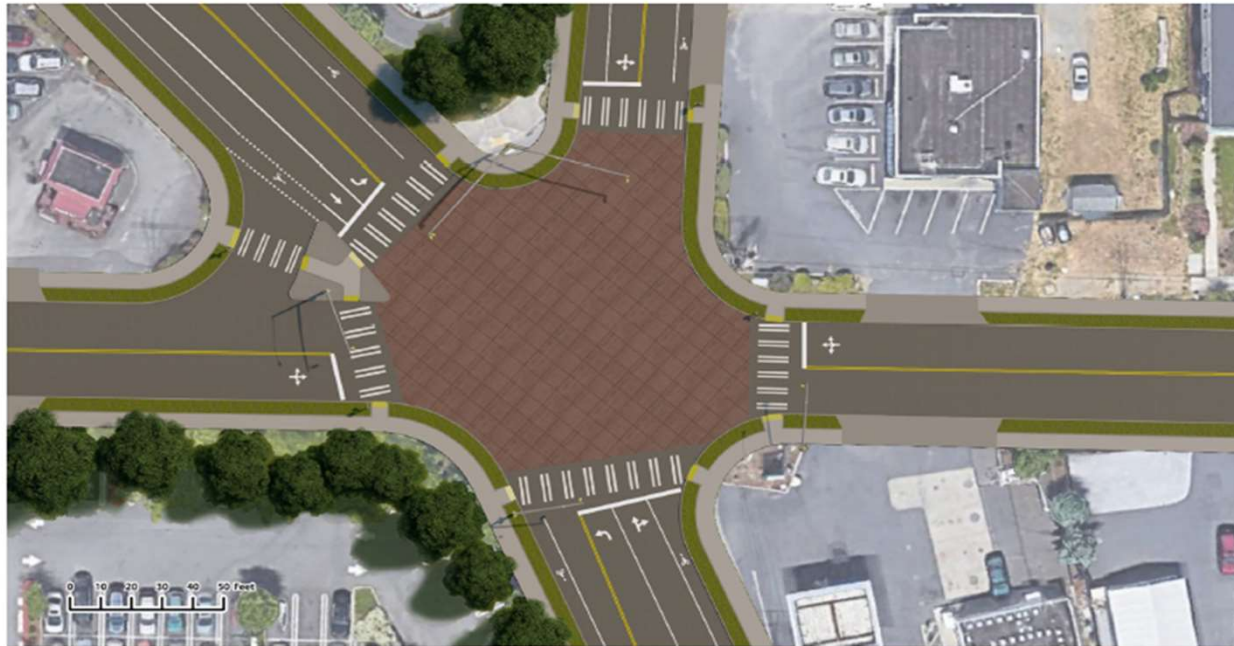


OPEN HOUSE CONTENT

ALTERNATIVE A – MAINTAINS SIGNAL

Alternative A would re-configure the northbound Military Road S approach, removing one lane and shortening the pedestrian crossing distance for the south leg. This alternative also:

- Removes the northeast porkchop island and extends the curb to create a more direct pedestrian crossing for the north leg;
- Restricts trucks from making southbound hard right turns from 42nd Avenue S to Military Road S and improves alignment of 42nd Avenue S with southbound Military Road S;
- Adds pavement treatment to accentuate intersection;
- Improves roadway and intersection lighting; and
- Updates signal timing to improve traffic flow.



OPEN HOUSE CONTENT

ALTERNATIVE B – MAINTAINS SIGNAL AND ADDS PLAZA

Alternative B also re-configures the northbound Military Road S approach, removing a lane and shortening the pedestrian crossing distance for the south leg. This alternative also:

- Restricts all traffic from making southbound hard right turns from 42nd Avenue S to Military Road S and extends the curb to provide plaza space for gathering;
- Removes the northwest porkchop island and protects all pedestrian movements with a signal phase;
- Restricts right turn on red for eastbound 164th Street due to placement of stop bar and crosswalk;
- Adds pavement treatment to accentuate intersection;
- Improves roadway and intersection lighting; and
- Updates signal timing to improve traffic flow.



OPEN HOUSE CONTENT

ALTERNATIVE 3 – CONVERT SIGNAL TO ROUNDABOUT

Alternative 3 replaces the existing traffic signal with a one-lane roundabout. This alternative also:

- Provides pedestrian refuges for each crossing;
- Allows bicyclists to enter the sidewalk from bike lane approaches and use marked crosswalks to traverse roundabout, or bicyclists can traverse the roundabout with vehicles; and
- Provides space in center of roundabout for fountain/sculpture/art feature. (Note: center island not intended as a gathering space).



OPEN HOUSE CONTENT

Simplified Public Facing Evaluation Criteria

Evaluation Criteria	Questions	Alt A: Signal	Alt B: Signal w/ Plaza	Alt C: Roundabout
Safety	Does this design improve safety for motor vehicle drivers and passengers?	4	4	5
	Does this design improve safety for pedestrians and bicyclists?			
Operations/Mobility	Does this design maintain acceptable traffic operations?	3	3	4
Access	Does this design negatively impact access for passenger vehicles or freight?	4	4	4
	Does this design improve access for pedestrians and bicyclists?			
Creating a Community Hub	Does this design create a place where residents, businesses, and visitors can enjoy the space and thrive?	3	4	5
Property Impact	Does this design impact existing business operations, property lines, and/or parking?	3	3	2
Cost	What is the cost implication of this design?	3	3	2

* Rating scale is 1 to 5 with 5 being the most favorable



Military Road 5-Way Intersection Study



The intersection at Military Road South, South 164th Street, and 42nd Avenue South is heavily used, as it connects several important destinations between SeaTac and Tukwila. Its configuration is complex, with five signalized crossings and a history of safety issues.

The City of SeaTac is studying the intersection to determine a configuration that will improve mobility and safety for people driving, walking, or biking through the intersection.



Translations

**WE WANT TO HEAR FROM YOU...
VISIT OUR ONLINE OPEN HOUSE!**
June 2 through June 23

militaryroad.infocommunity.org

You'll be able to:

- ▶ Learn more about the project
- ▶ See the design concepts we're considering
- ▶ Share your thoughts



If you need this information translated, please call 206.973.4750
dtomporowski@seatacwa.gov

Si necesita traducir esta información al español, llame al 206.973.4750
dtomporowski@seatacwa.gov

የዚህን መረጃ ትርጉም ከፈለጉ፣ በዚህ ስልክ ቁጥር ይደውሉ፡ 206.973.4750
dtomporowski@seatacwa.gov

ናይዚ ሓበሬታ ትርጉም እንተደሊኹም፣ በዚ ቁጥር ስልክ ይደውሉ፡ 206.973.4750
dtomporowski@seatacwa.gov

Haddii aad dooneyso turjubeen fadlen wac 206.973.4750
dtomporowski@seatacwa.gov

POTENTIAL COMMITTEE ACTION

COMMITTEE ACTION REQUESTED

- None, informational only

