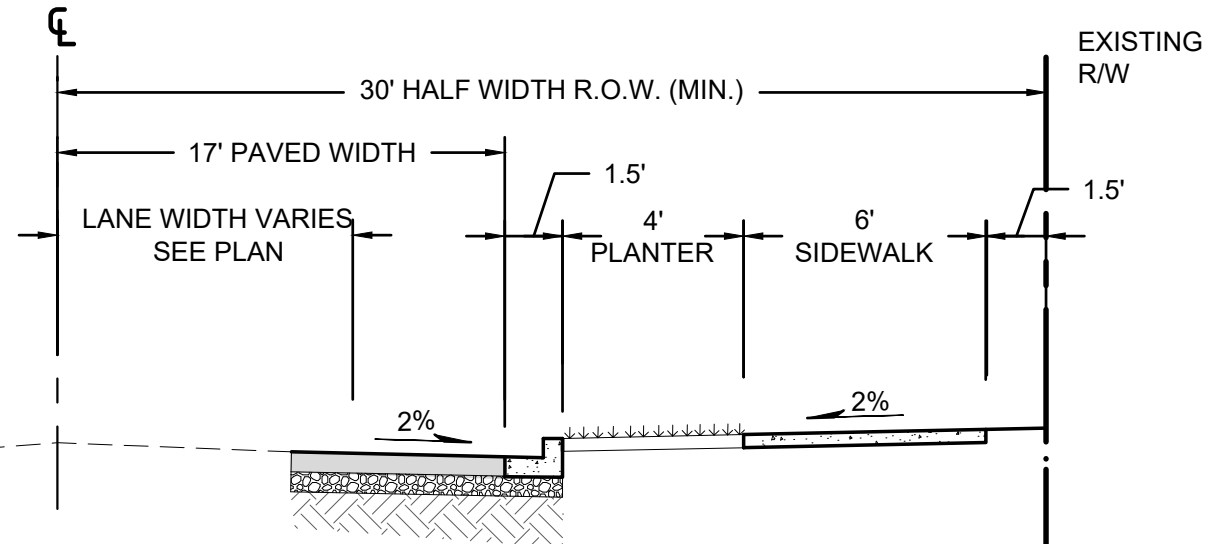
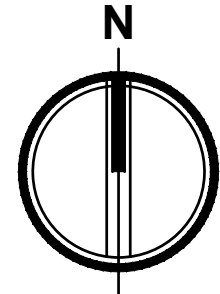


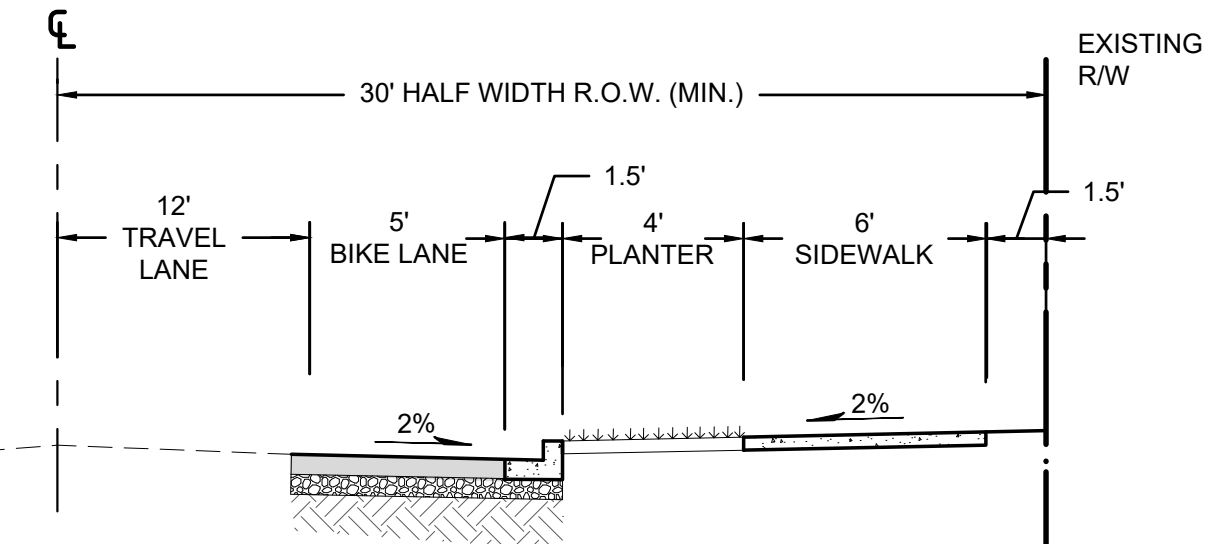
BRIDGE POINT SEATAC 300

A PORTION OF THE SE 1/4 OF THE NE 1/4 OF SEC. 5, TWN. 22 N., RGE. 04 E. W.M.
KING COUNTY, WASHINGTON.



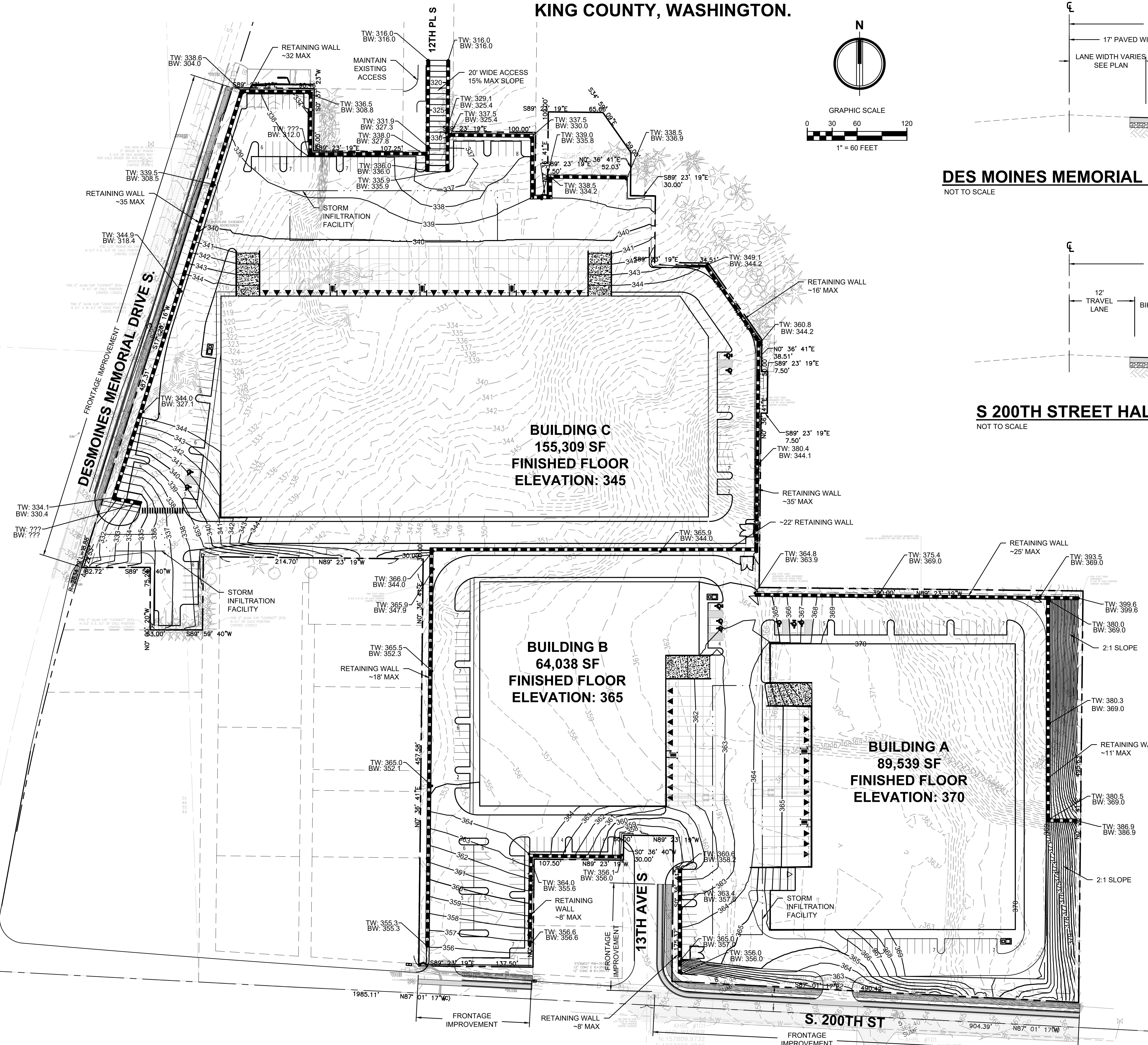
DES MOINES MEMORIAL DRIVE HALF STREET SECTION

NOT TO SCALE



S 200TH STREET HALF STREET SECTION

NOT TO SCALE



OWNER

BRIDGE DEVELOPMENT PARTNERS, LLC
10655 NE 4TH STREET, SUITE 500
BELLEVUE, WA 98004
CONTACT: KYLE SIEKAWITCH
PH: (425) 749-4325

SITE ADDRESS

1410 SOUTH 200TH STREET
SEATAC, WA 98198

CIVIL ENGINEER

AHBL
2215 NORTH 30TH STREET, SUITE 300
TACOMA, WA 98403
PH: (253) 383-2422
FAX: (253) 383-2572
CONTACT: BART BRYNESTAD, P.E.

SURVEYOR

AHBL
2215 NORTH 30TH STREET, SUITE 300
TACOMA, WA 98403
PH: (253) 383-2422
FAX: (253) 383-2572
CONTACT: DAVID FOLLANSBEE, PLS

VERTICAL DATUM

NAVD 1988 VERTICAL DATUM ON ORTHOMETRICALLY CORRECTED
GPS OBSERVATIONS USING WSRN AND GEOID 2012A.

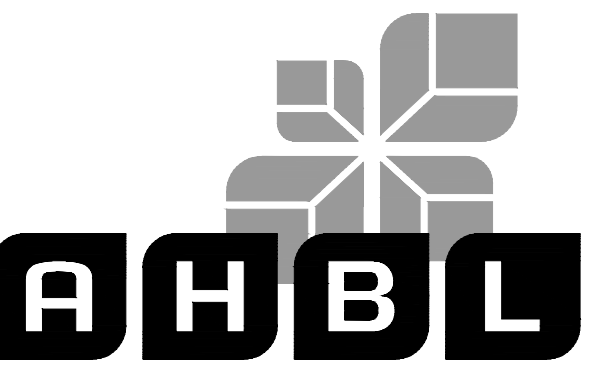
BASIS OF BEARING

NAD 1983/11
WASHINGTON STATE PLANE NORTH PROJECTION, BASED ON GPS
OBSERVATIONS USING WSRN AND GEOID 2012A. UNITS OF
MEASUREMENT ARE US SURVEY FEET.

EARTHWORK QUANTITIES

CUT: 65,500 CY
FILL: 142,500 CY
NET: 77,000 CY FILL

NOTE:
THE ABOVE QUANTITIES ARE ESTIMATES ONLY
INTENDED FOR THE PERMITTING PROCESS.
DO NOT USE FOR BID PURPOSES. THE
QUANTITIES DO NOT HAVE STRIPPING,
COMPACTION, OR CUT OR FILL ADJUSTMENT
FACTORS APPLIED TO THEM.



TACOMA · SEATTLE · SPOKANE · TRI-CITIES

2215 North 30th Street, Suite 300, Tacoma, WA 98403
253.383.2422 TEL 253.383.2572 FAX www.ahbl.com WEB

Project Title:

**BRIDGE POINT
SEATAC 300**

Client:

**BRIDGE DEVELOPMENT
PARTNERS, LLC**

10655 NE 4TH STREET, SUITE 500
BELLEVUE, WA 98004

KYLE SIEKAWITCH
PH: (425) 749-4325

Project No.

2200531.10

Issue Set & Date:

SITE PLAN REVIEW

3/9/2021



NOTICE
ALTERATION OF THIS DOCUMENT SHALL INVALIDATE THE
PROFESSIONAL SEAL AND SIGNATURE. PUBLICATION OF
THIS DOCUMENT DOES NOT CONSTITUTE A PROFESSIONAL
ENGINEER'S REVIEW. THIS DOCUMENT IS THE PROPERTY OF
AHBL AND IS NOT TO BE USED FOR ANY OTHER PROJECT,
EXCEPT AS THAT PROJECT OR FOR ANY OTHER PROJECT.

△	
△	
△	
△	
△	

Revisions:

Sheet Title:

**PRELIMINARY
GRADING AND
DRAINAGE PLAN**

Designed by: MW Drawn by: TS Checked by: BB

Sheet No.

SPR1

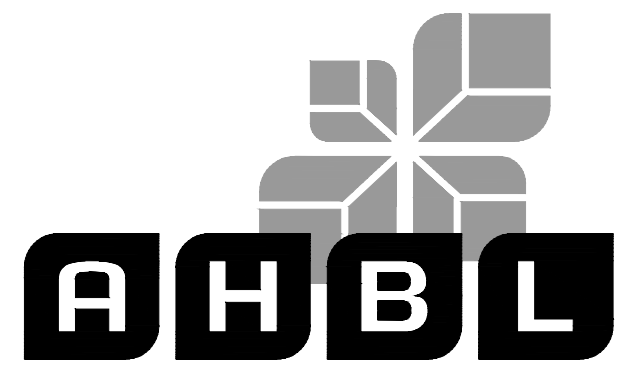
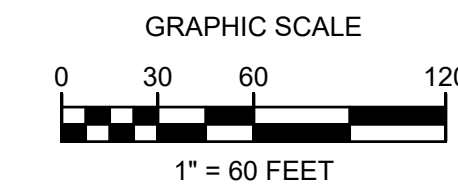
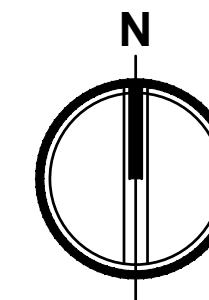
1 of 2 Sheets



Know what's below.
Call before you dig.

BRIDGE POINT SEATAC 300

A PORTION OF THE SE 1/4 OF THE NE 1/4 OF SEC. 5, TWN. 22 N., RGE. 04 E. W.M.
KING COUNTY, WASHINGTON.



TACOMA · SEATTLE · SPOKANE · TRI-CITIES

2215 North 30th Street, Suite 300, Tacoma, WA 98403
253.383.2422 TEL 253.383.2572 FAX www.ahbl.com WEB

Project Title:

BRIDGE POINT SEATAC 300

Client:
BRIDGE DEVELOPMENT PARTNERS, LLC

10655 NE 4TH STREET, SUITE 500
BELLEVUE, WA 98004

KYLE SIEKAWITCH
PH: (425) 749-4325

Project No.

2200531.10

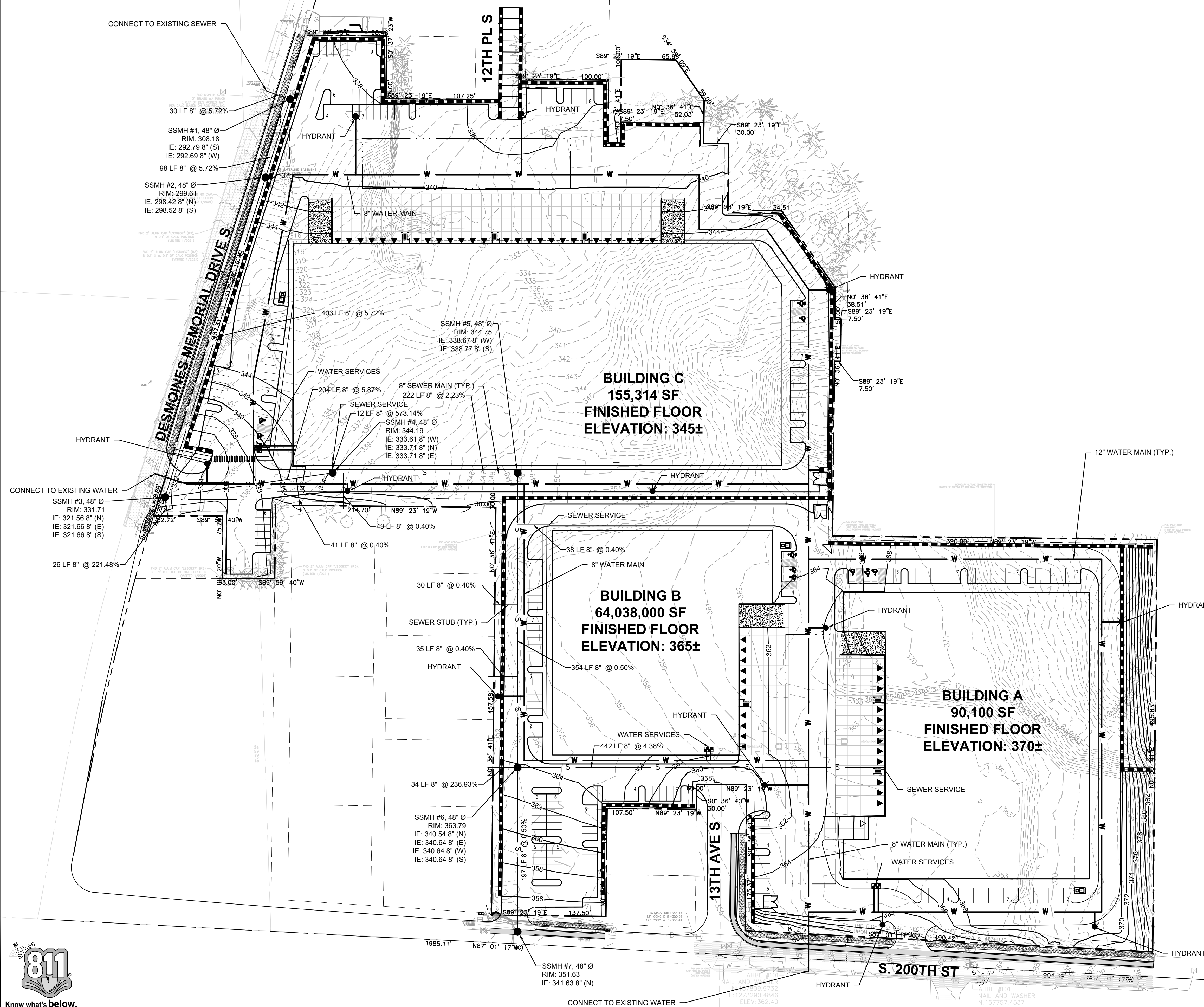
Issue Set & Date:

SITE PLAN REVIEW

3/9/2021



NOTICE
ALTERATION OF THIS DOCUMENT SHALL INVALIDATE THE PROFESSIONAL SEAL AND SIGNATURE. PUBLICATION OF THIS DOCUMENT DOES NOT CONSTITUTE AN ENDORSEMENT OR GUARANTEE BY THE ENGINEER. THE ENGINEER IS NOT TO BE USED FOR OTHER PURPOSES OR ADDITION TO THAT PROJECT OR FOR ANY OTHER PROJECT.



Revisions:

Sheet Title:

PRELIMINARY UTILITY PLAN

Designed by: MW
Drawn by: TS
Checked by: BB

Sheet No.

SPR2