

OVERVIEW OF SEATAC POLICE 2019

June 23, 2020



Reduce crime and improve the community's sense of security

Through quick response, thorough investigations and thoughtful use of resources, we will instill confidence that SeaTac is a safe community in which to live, work and play.

Improve traffic safety by reducing impaired and unsafe driving behaviors and traffic collisions

Through enforcement, education, engineering and problem solving, work collaboratively with other city departments to reduce traffic collisions, moving violations and parking infractions.

Community Engagement

Encourage relationships and develop education programs that produce positive police interactions and sustain the public's trust.

Support City Operations

Support City wide efforts to reduce the impact of residences and businesses that negatively impact City resources.

Support our People

Hire, train and mentor highly qualified, service minded people, while providing for each individual's long-term safety, health and wellness.

2020 SEATAC POLICE DEPARTMENT GOALS



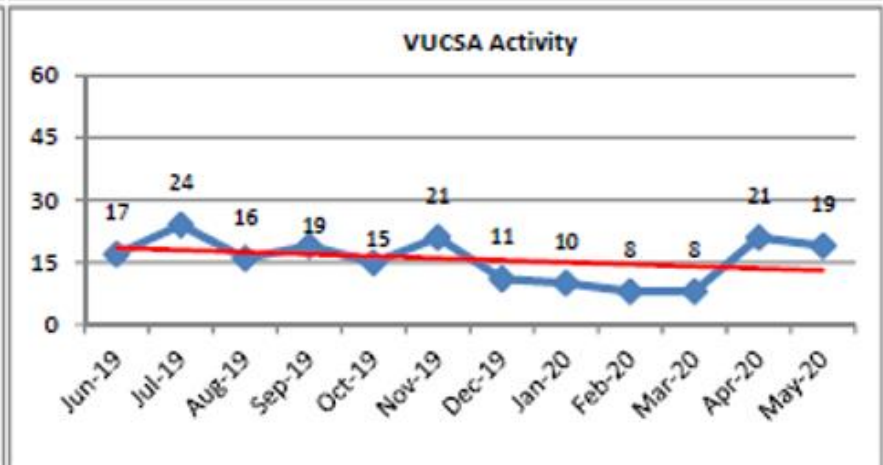
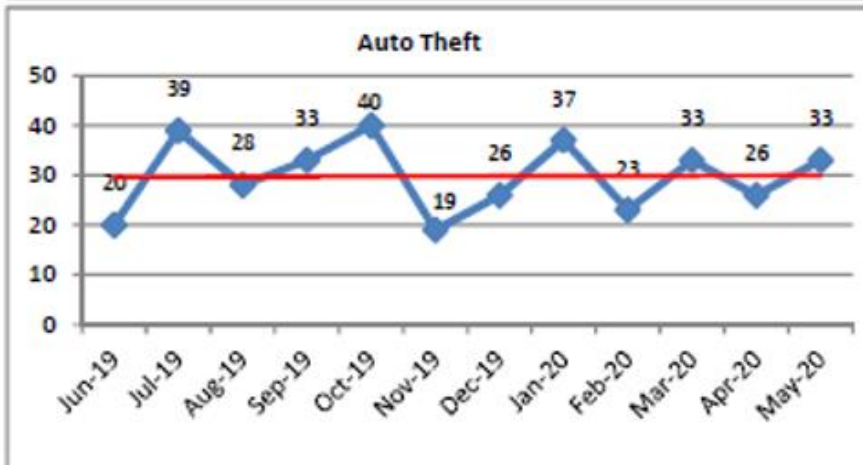
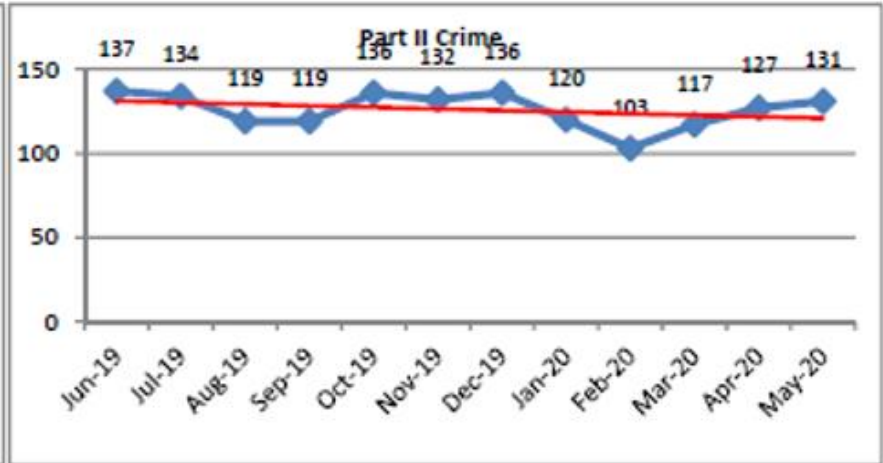
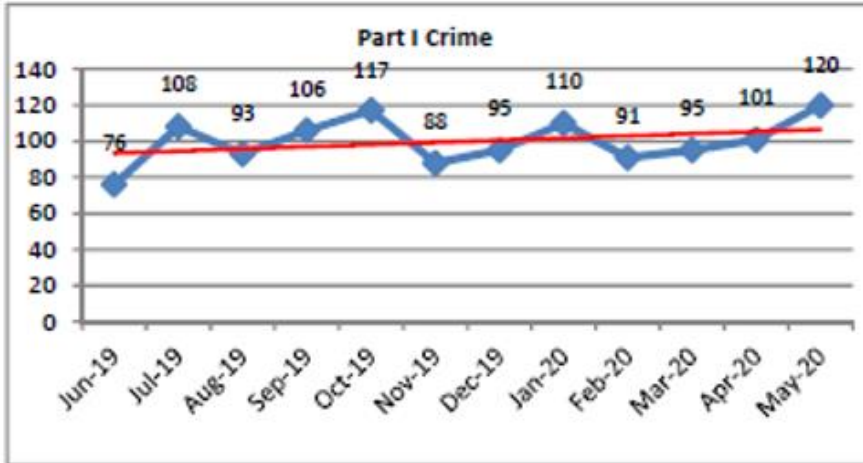
NATIONAL INCIDENT-BASED REPORTING SYSTEM, “NIBRS”

- 1929 – FBI instituted the Uniform Crime Reporting “UCR” method of collecting crime statistics. The Summary UCR method historically recorded and reported only the most serious offense committed in an incident, even though the incident could have involved multiple offenses.
- 1991 – the FBI initiated NIBRS to improve the overall quality of law enforcement crime data and set a date of 2021 for all agencies to be converted to the new method.
- 2018- the King County Sheriff’s Office instituted a new computer program in order to comply with the NIBRS mandate.



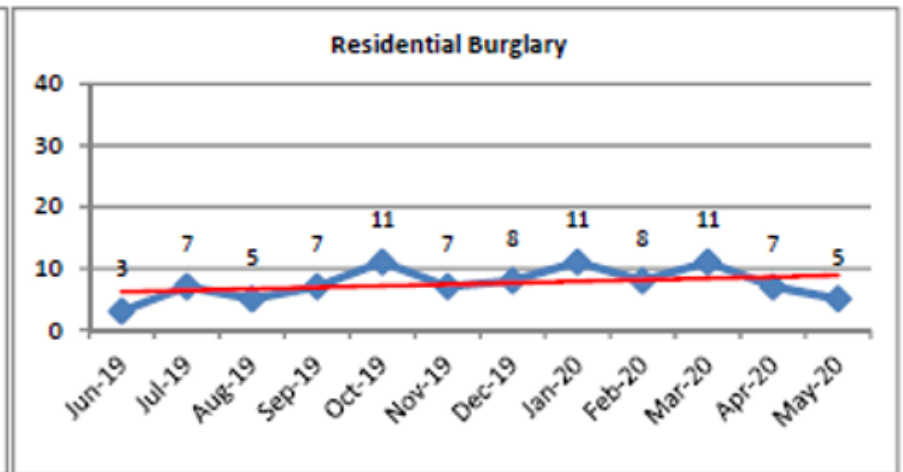
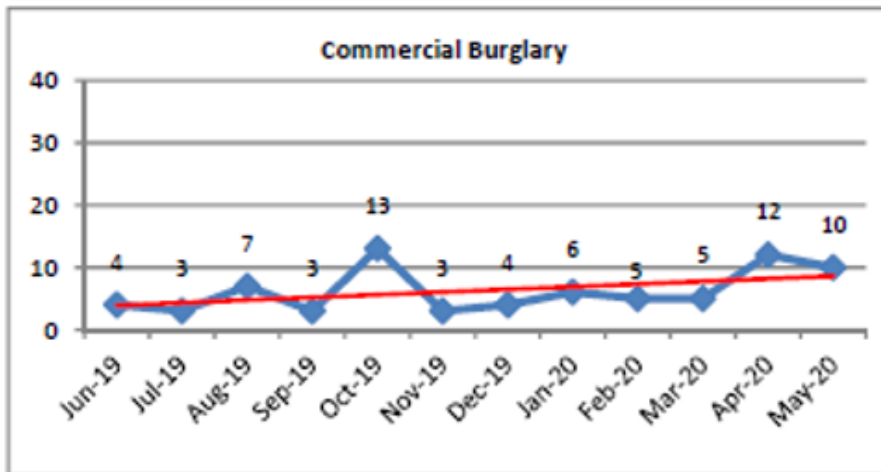
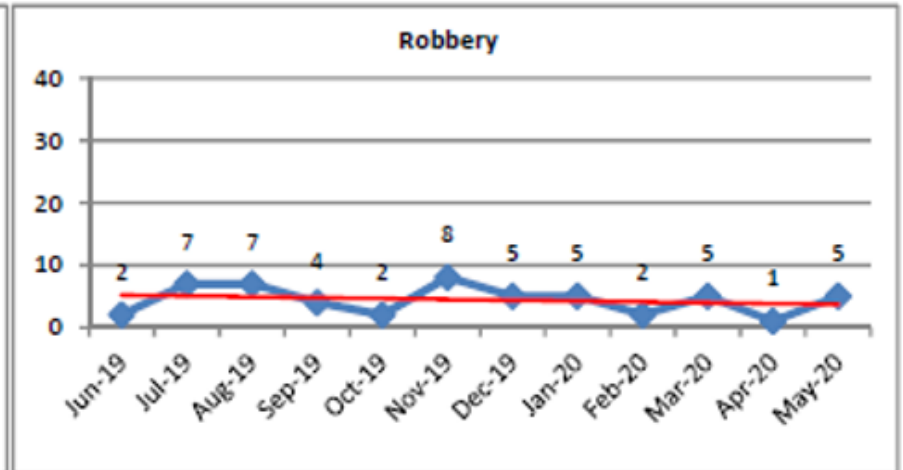
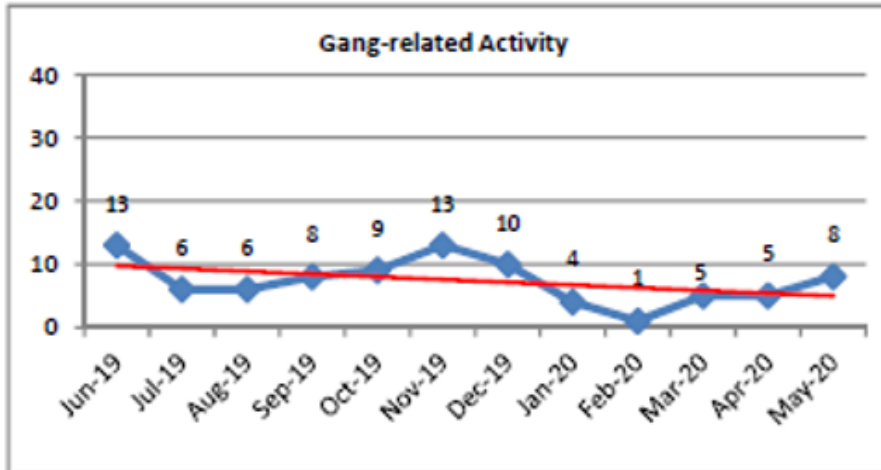
CRIME TRENDS FOR SEATAC

June 2019-May 2020



CRIME TRENDS FOR SEATAC

June 2019-May 2020



BERK POLICE SERVICES STUDY RECOMMENDATIONS

- #1-Continue to contract for law enforcement services from the King County Sheriff's Office (KCSO) and collaborate with other South King County law enforcement agencies where appropriate.
- #2-Work with KCSO to clarify overhead calculations and amend contract accordingly.
- #3-Amend contract to align with current and potential future service delivery models.
- #4-Take more proactive role in engaging with KCSO to identify answers to questions and remedies that arise.
- #5-With other contract cities, leverage Oversight Committee authority to establish performance measures, standards, and benchmarks for KCSO police services and monitoring of ILA terms.
- #6-Increase the department's focus on community relationship building.
- #7-Increase organization and staff member competency for engaging effectively with the community members of all backgrounds.
- #8-Encourage the use of online reporting tools, with additional effort to ensure they are known by and easy to use for all SeaTac residence.
- #9-Increase department expertise and resources for handling increasing social and behavioral health issues.
- #10-Explore opportunities to use technology to deter and solve crimes along high volume corridors.
- #11-Use projected patrol requirements as bookends to inform the Managing Police Performance (MPP) process and adjust patrol and supervisory capacity.
- #12-Make improvements to crime and performance measures reporting to inform decision-making.
- #13-Strengthen the use of crime data and analysis to understand and respond to the potential effects of crimes associated with transit through the community.



RECOMMENDATION NUMBER 7 FROM THE BERK STUDY

Increase organization and staff member competency for engaging effectively with the community members of all backgrounds.

Dialogue with community groups to increase cultural competency

- Meet with leaders of communities within SeaTac to discuss specific community policing needs and increase understanding of cultural practices
 - Reach out to ethnically diverse SeaTac communities for dialogue
 - Work with communities to foster opportunities for growth and learning of different cultural experiences
 - Find other policing needs specific to this community
 - For example, the SeaTac Police do not enforce parking regulations around the Mosque during Friday prayer services. WHY?
 - Cultural expectations during death investigations
 - Appropriate clothing for entering holy areas
 - EXPLAIN



RECOMMENDATION NUMBER 7 FROM THE BERK STUDY

Increase organization and staff member competency for engaging effectively with the community members of all backgrounds.

- Currently, SeaTac Police have worked with different entities and programs to promote this recommendation such as:
 - Quarterly Community Consultation w/Refugee Resettlement Status Meeting
 - Block watch meetings set up by community groups in SeaTac
 - Lutheran Community Services
 - Teen and Community Police Academies
 - Park Patrol
 - Senior Programs across the city via our CSO's
 - Possible "Community Engagement Officer" in north end of city
 - Community outreach regarding north end development closure and parking concerns

The goal would be to increase our rapport and relationships with various community groups to decrease crime, create dialogue and increase community policing efforts



QUALITY INN

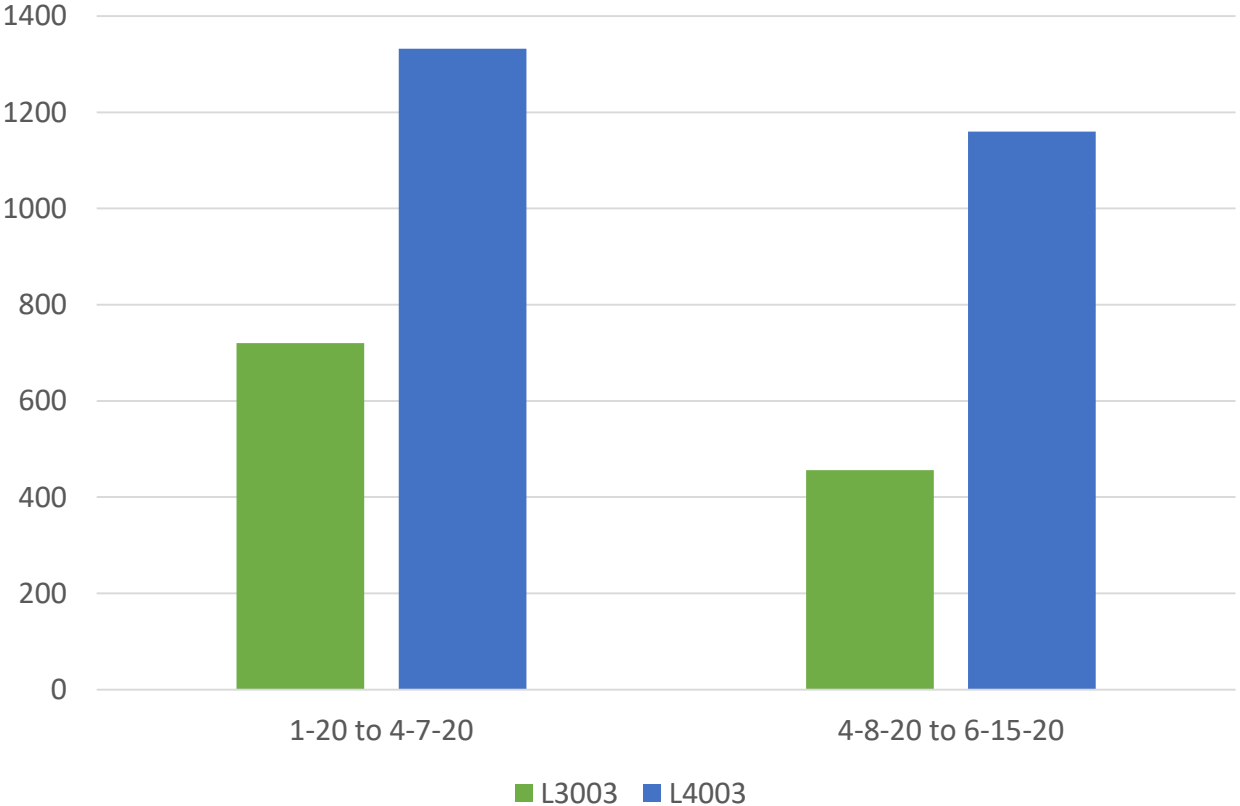


QUALITY INN

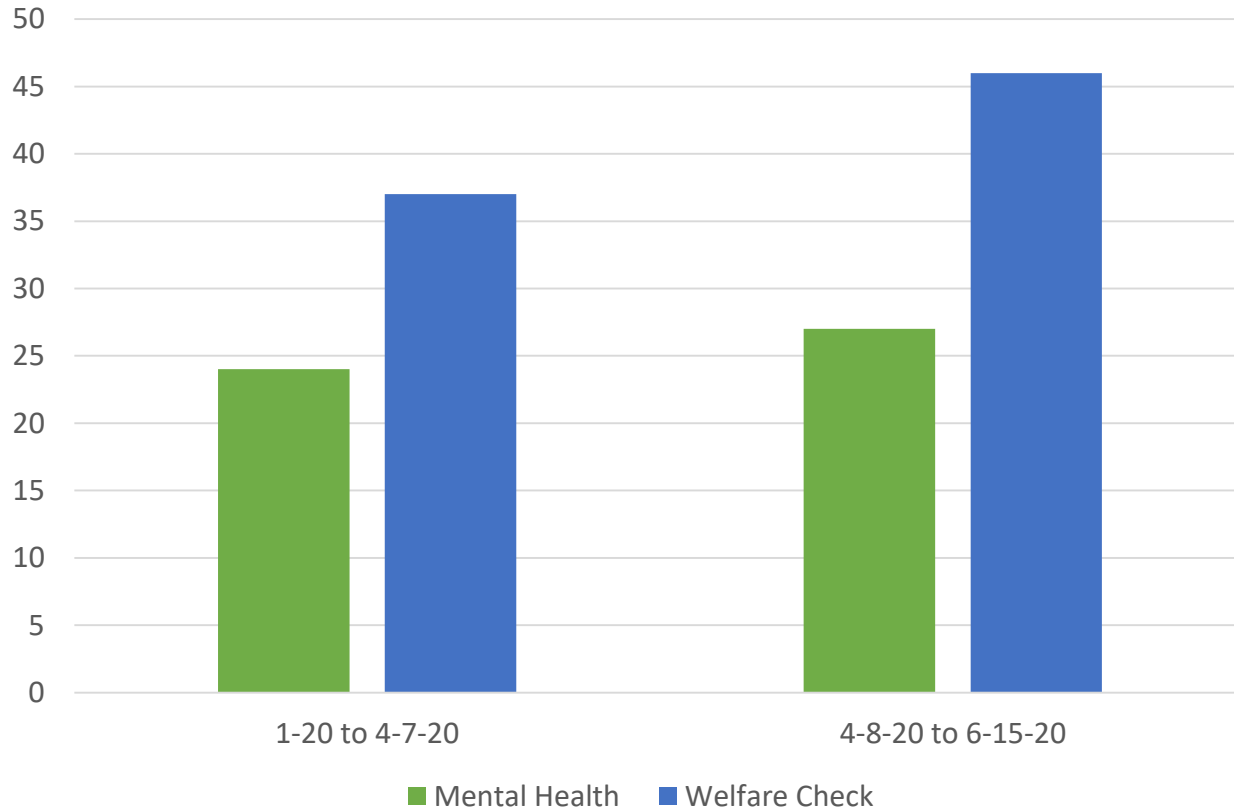
- The Quality Inn opened as a non-Covid homeless shelter in early April
 - 90-day lease originally
- Operated by Catholic Community Services
 - Good relationship in place with management
- County plan to de-intensify the homeless population from areas in Seattle to around King County
- One of a few shelters located in communities around King County
- Lease on the hotel will reportedly be up in early July
 - Unsure of definite end date
 - Unsure of plans after closure



CALLS IN THE TWO SUBDISTRICTS SURROUNDING THE QUALITY INN



MENTAL HEALTH AND WELFARE CHECK CALLS IN THE TWO SUBDISTRICTS SURROUNDING THE QUALITY INN



Recent PROTESTS in SeaTac



Recent PROTESTS in SeaTac

- Under 1st Amendment, all ‘persons have a right to march, demonstrate, protest, rally or perform other activities...’
- Spontaneous vs. planned
 - How we set up and organize
 - SeaTac PD usually staff-“up”
 - Go in expecting to adapt as we proceed
- Be impartial before, during and after demonstrations, while protecting life and property

GOAL: for everyone to engage in this protected activity safely, with as minimal disruption as possible to community as a whole



Questions?

