



PROS 2020 Parks Committee

June 4, 2020 - PROS Plan Update

Today's Presentation

- Project Background and Overview – Erika Rhett, BERK
- Recreation Needs, Demands, and Trends – Jason Hennessey, BERK
- Gaps in Access and Level of Service – Erika Rhett, BERK
- System Plan Improvements – Juliet Vong, HBB



Background and Overview

Project Purpose

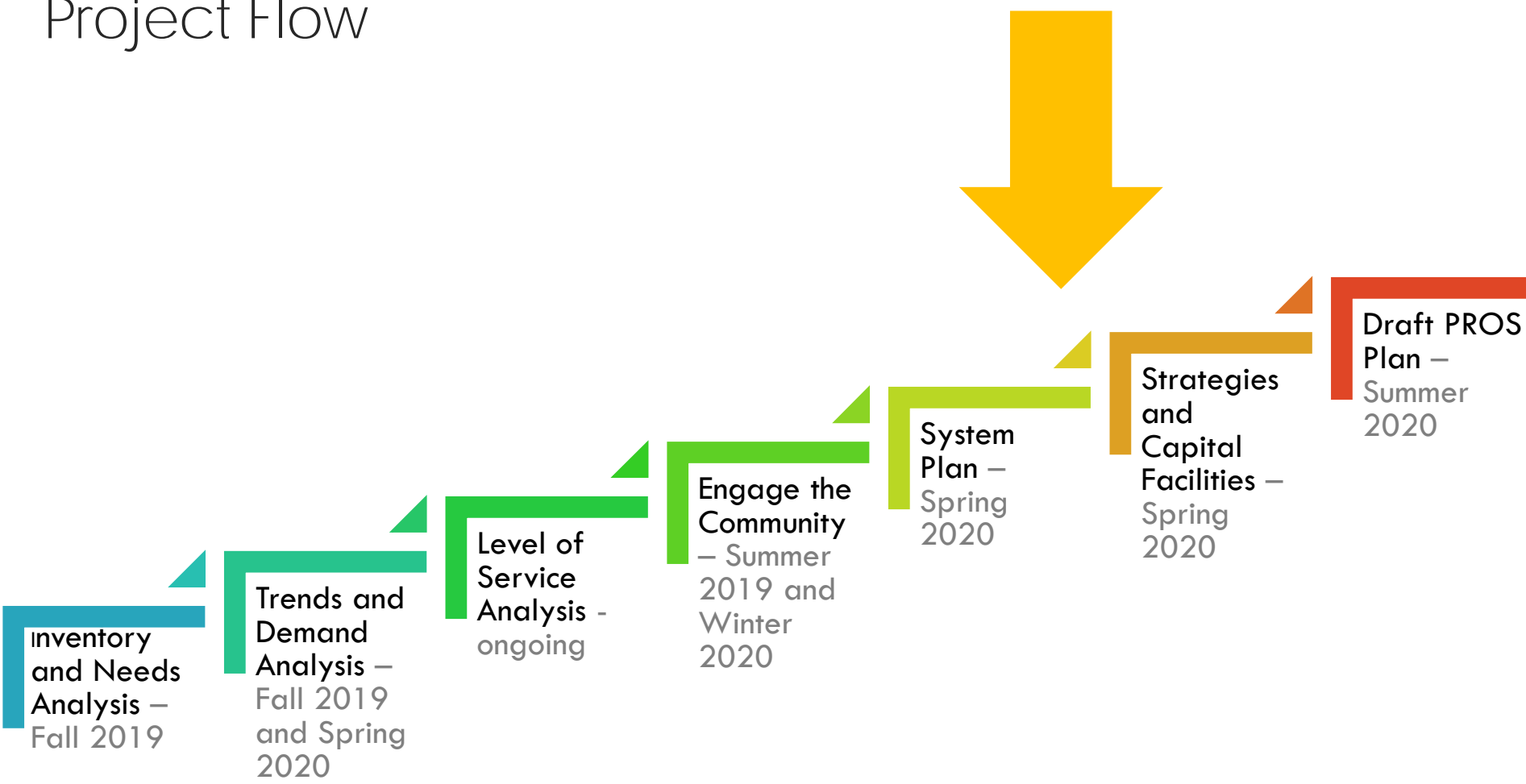
Update the PROS plan to better connect community needs with the facilities and programs offered.

Ensure the plan is consistent with RCO standards and GMA.

- Identify community needs for parks and recreation
- Evaluate trends and demand for parks and recreation
- Establish LOS criteria that meaningfully respond to growth
- Apply an equity lens to understanding system gaps
- Update the Parks capital facilities plan
- Develop an implementation strategy



Project Flow



Community Engagement - **What we heard...**

- Places to play
- Gathering places
- Maintenance and safety
- More programming and events
- Free or low-cost health and wellness
- Outdoors and nature
- Easier to access by walking
- More trails and connection
- Welcoming to all



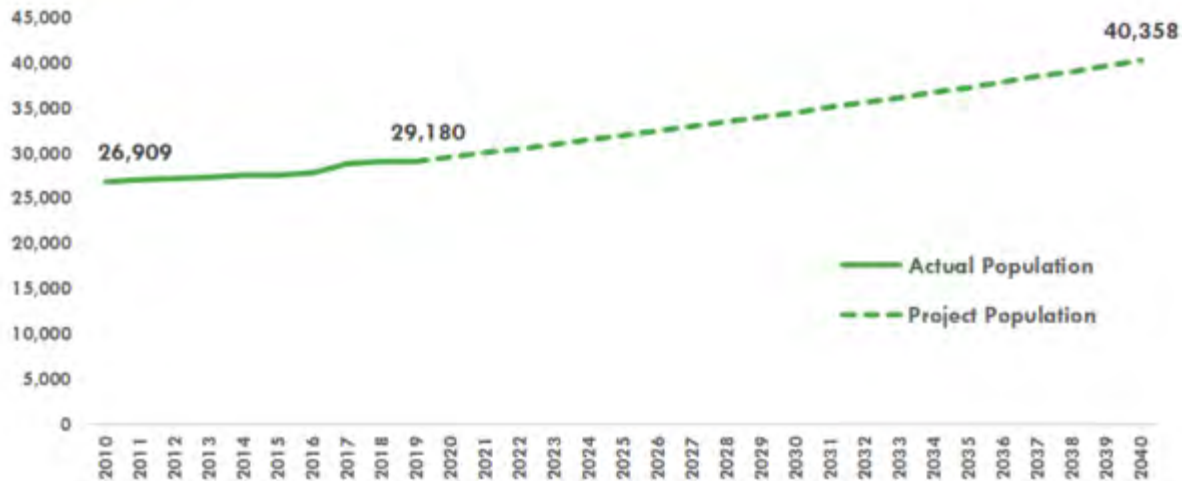
Kid's Fest, above. 30th Birthday, below.



Community Profile

- The population is growing – about 40% increase over 20 years
- Youth are about a quarter of the population
- Older adults are projected to be about 20% of the population
- The community wants more opportunities for youth and seniors

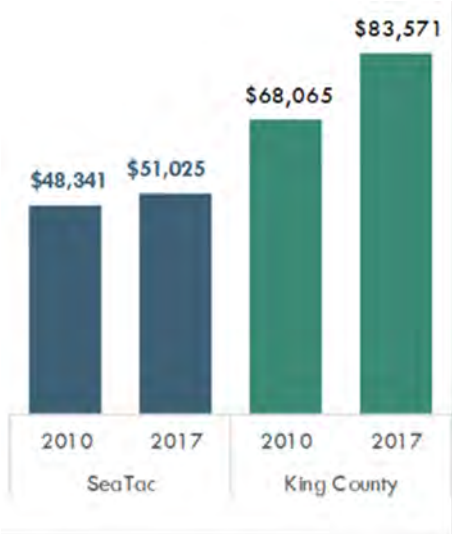
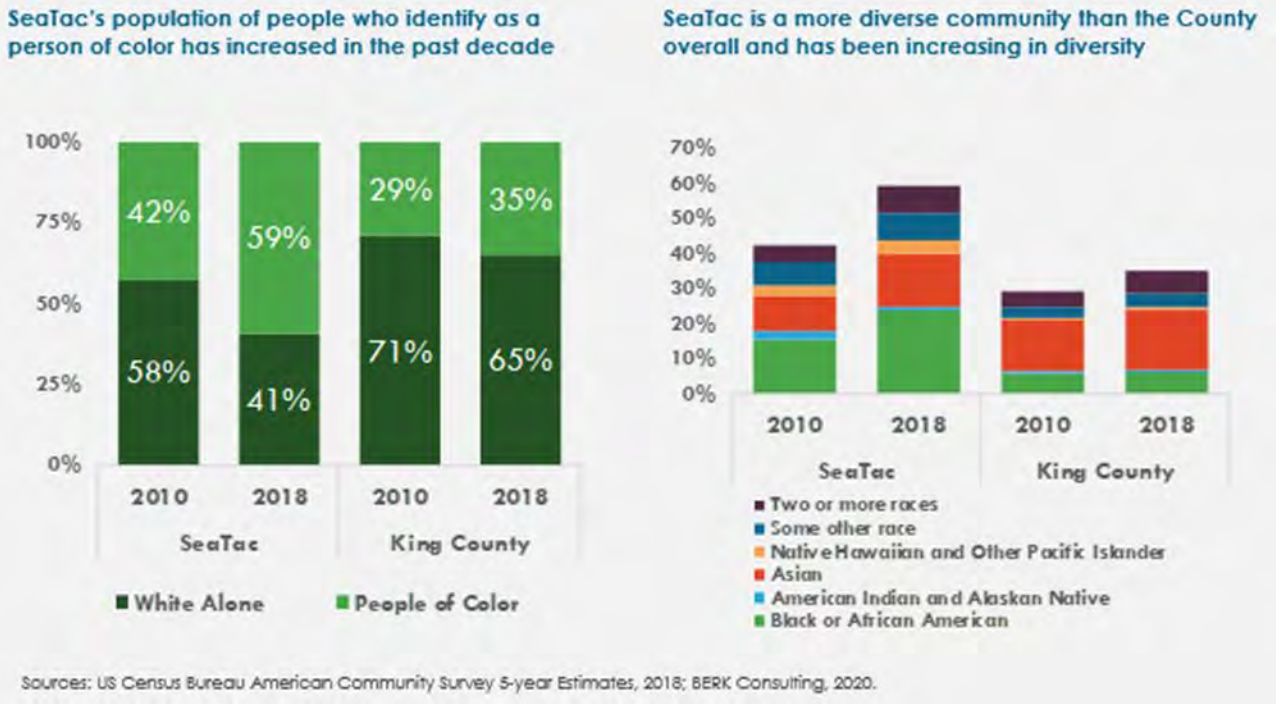
POPULATION



Sources: US Census Bureau American Community Survey 5-year Estimates, 2018, BERK Consulting, 2020

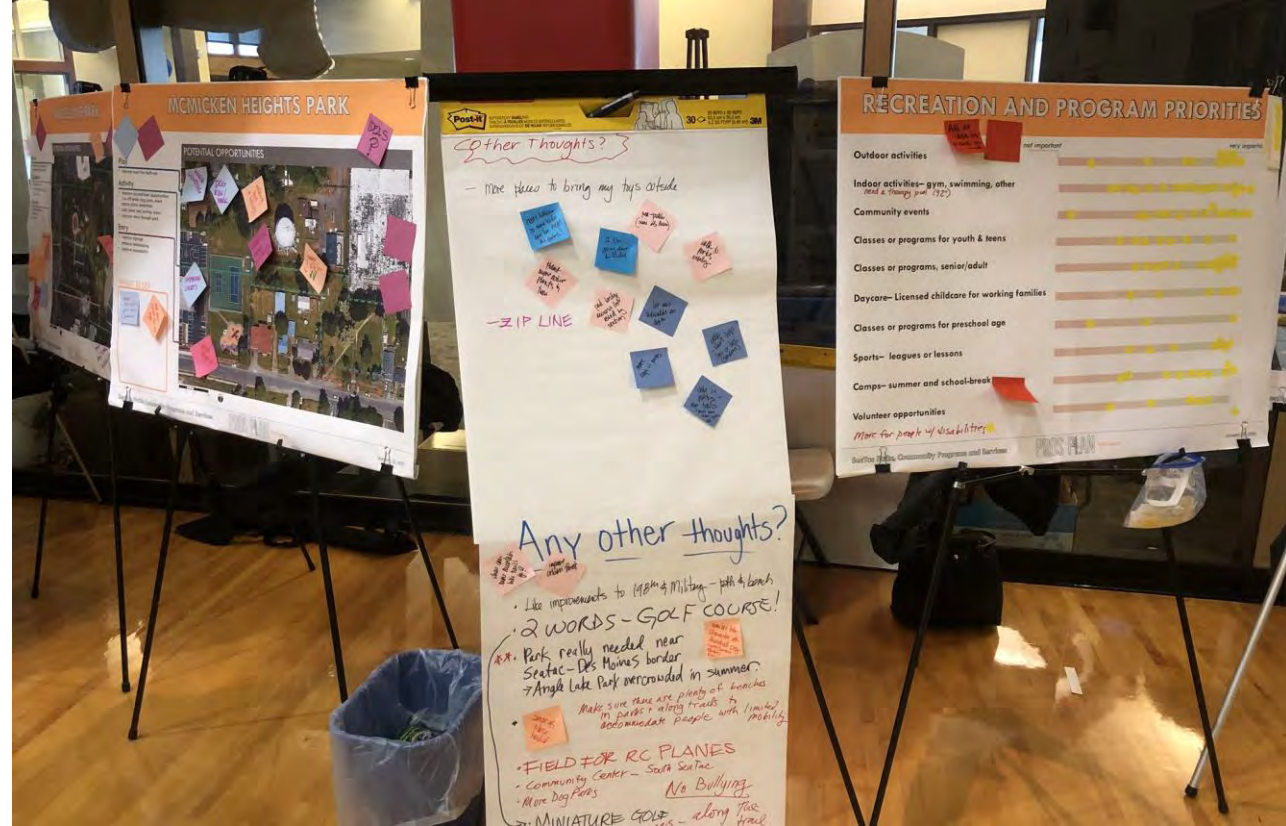
Community Profile

- SeaTac’s population is increasingly diverse – and is asking for the parks system to reflect that
- Household incomes are low and stagnant, underscoring the need for free and low-cost opportunities



Draft Vision

SeaTac provides innovative parks, recreation, and open spaces that are welcoming and available to all people in the community for health, fun, and community building.





Recreation Demand

Efforts to Date

Demographic Profile

- Community Profile – full profile in the PROS plan
- Participation Profile
 - Demographic information not currently tracked
 - Will be based on qualitative feedback from staff

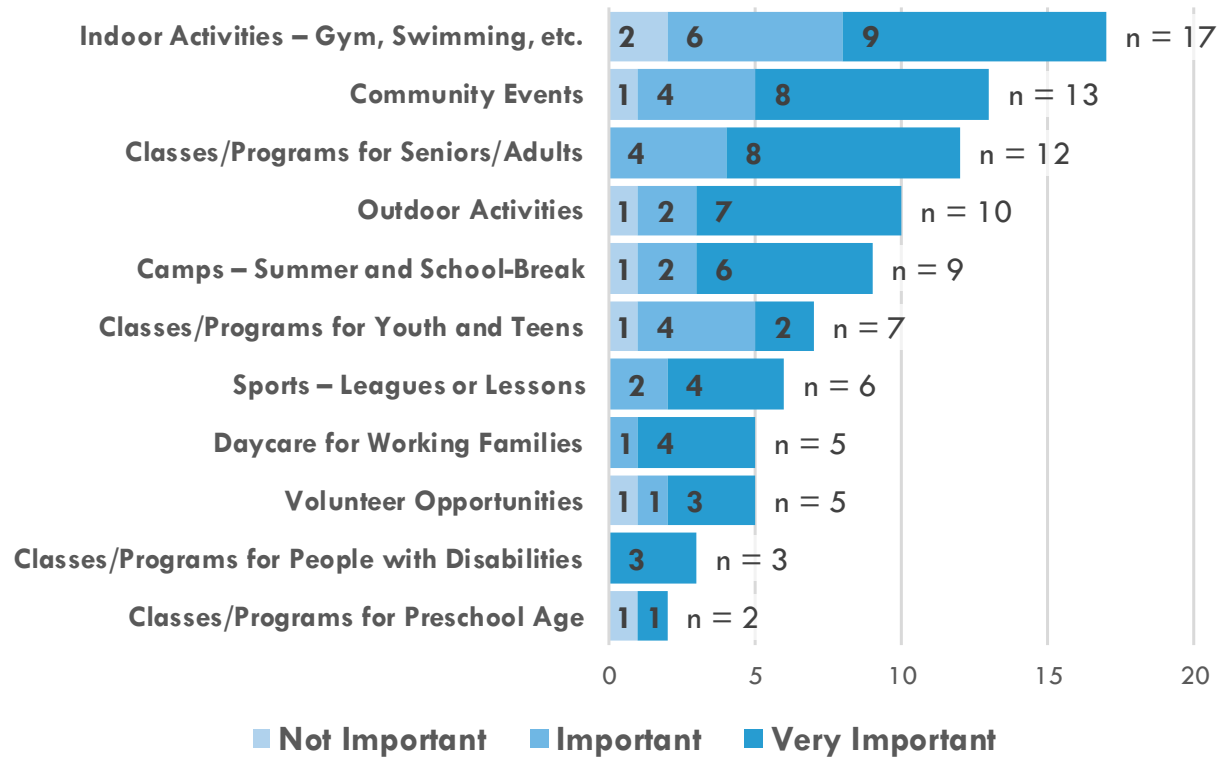


Efforts to Date

Recreation Demand: Resident Recreation Desires

Engagement Feedback – Open House Winter 2020

Community Recreation Programming Needs



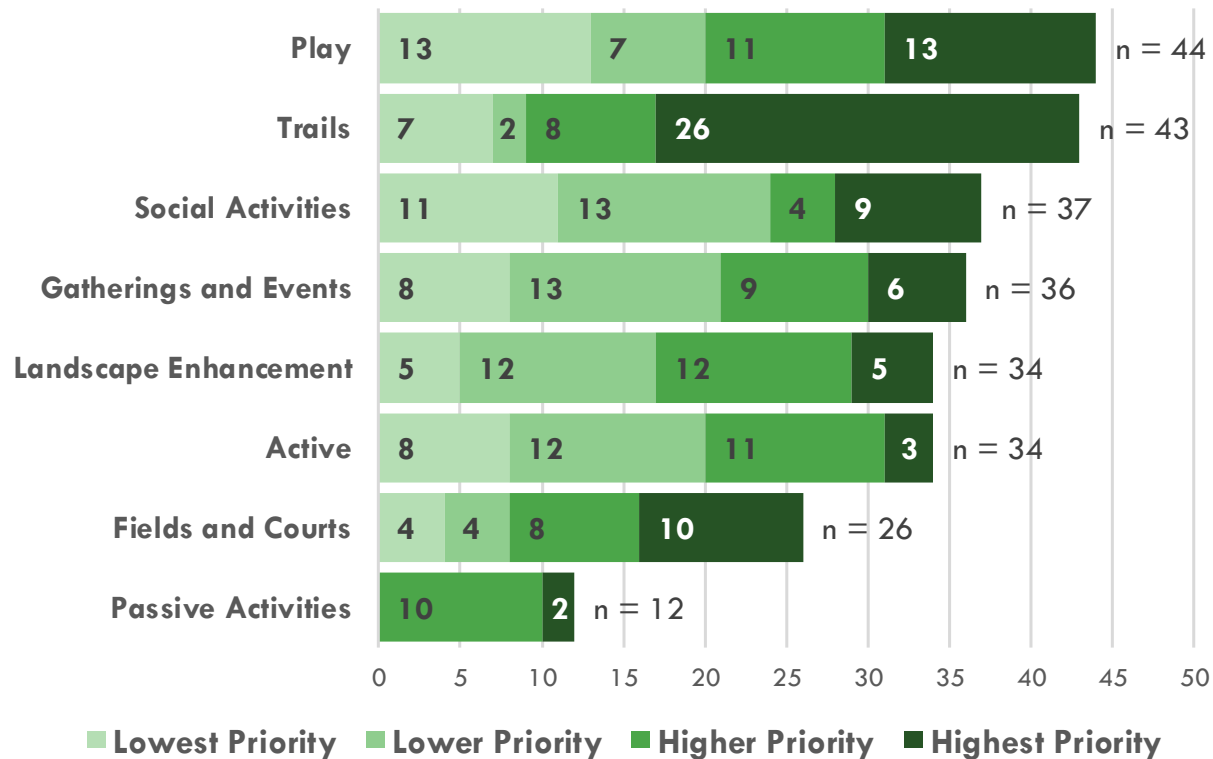
Source: BERK Consulting, 2020.

Efforts to Date

Recreation Demand: Resident Recreation Desires

Engagement Feedback – Open House Winter 2020

Priorities



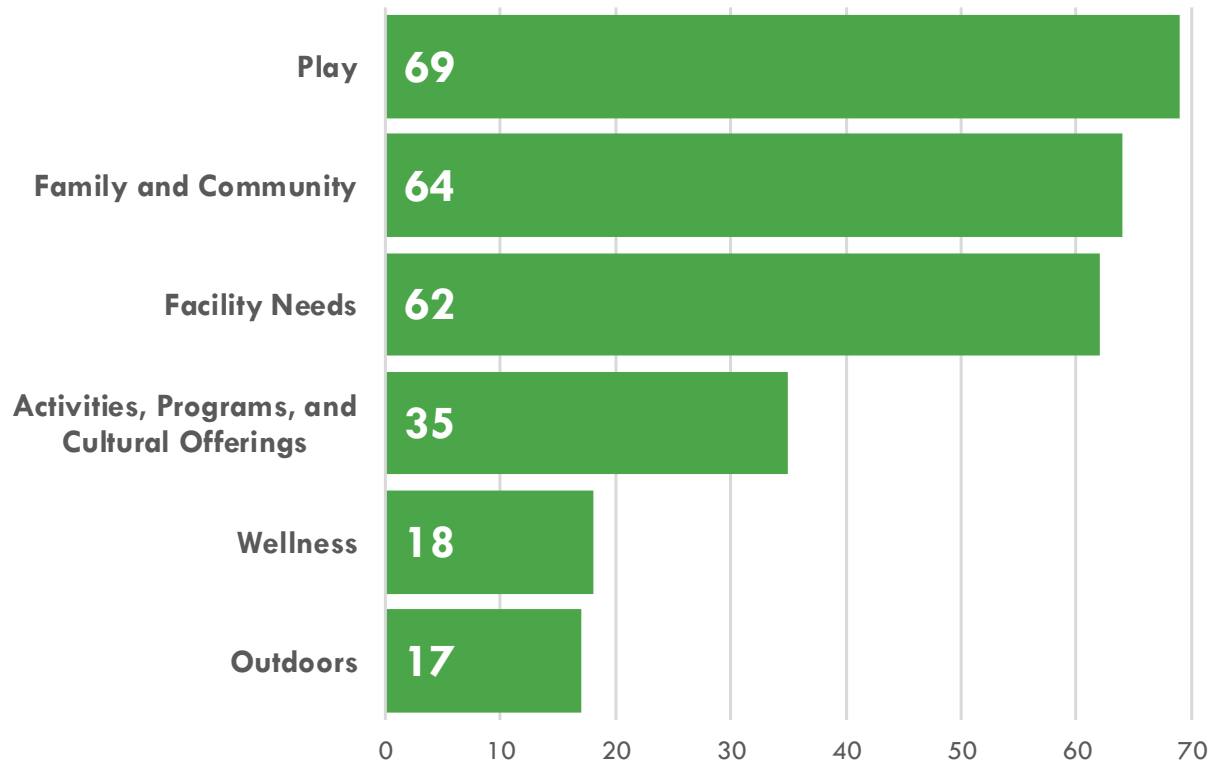
Source: BERK Consulting, 2020.

Efforts to Date

Recreation Demand: Resident Recreation Desires

Engagement Feedback – Kids Fest 2019

Priorities



Source: BERK Consulting, 2020.

Recreation Demands: Qualitative Feedback

When discussing SeaTac's recreation programming, some themes emerged from public feedback at the events that was not quantifiable. These themes included that people:

- Like the existing program mix;
- Are concerned about safety and maintenance;
- Would like greater accessibility (programming offered in more locations) and would like to be able to walk to facilities
 - Since acquisition opportunities are somewhat limited, exploring alternative delivery methods to fill-in gap areas
 - Assistance getting people to existing programming (enhanced access: trails, transit, shuttles, activity busses for afterschool)

Efforts to Date

Recreation Demand: National Trends

Top 10 Planned Program Additions in 2019

	Programs	%
1	Group exercise programs	28%
2	Fitness programs	27%
3	Educational programs	27%
4	Programs for active older adults	26%
5	Mind-body balance programs	25%
6	Teen programs	23%
7	Day camps and summer camps	23%
8	Holidays and other special events	22%
9	Environmental education	22%
10	Special needs programs	22%

Top 10 Planned Facilities in 2019

	Programs	%
1	Splash play areas	21%
2	Playgrounds	18%
3	Fitness trails & outdoor fitness equip.	17%
4	Synthetic turf sports fields	17%
5	Dog parks	16%
6	Park shelters	15%
7	Walking and hiking trails	14%
8	Park restrooms	14%
9	Bleachers and seating	13%
10	Fitness centers	13%











Sources: Recreation Management, 2019; BERK Consulting, 2020.

Efforts to Date

Recreation Demand: Regional Outdoor Trends

The RCO produces a survey every 5 years of Washington residents' outdoor recreation activities.

King County residents were asked what outdoor activities they participated in during the previous 12 months. Below are the top 10 activities selected ranked by number of percent of participants

	Activity	%	
1	Walking in a Park or Trail Setting	89%	
2	Visiting a Beach or Tide Pools	67%	
3	Attending an Outdoor Concert or Event	66%	
4	Visiting Zoos, Gardens, or Arboretums	61%	
5	Day-hiking	57%	
6	Visiting Rivers or Streams	57%	
7	Relaxing, Reading, or Hanging Out	57%	
8	Playing	49%	
9	Picnicking, BBQ, or Cookout	48%	
10	Visiting Scenic or Wilderness Area	45%	

Sources: Washington State Recreation and Conservation Office, 2017; BERK Consulting, 2020.

Efforts to Date

Current SeaTac Recreation Programming Participation by Program

Type	Program	Participation			Measure
		2017	2018	2019	
Preschool Programs	Preschool	6,400	6,400	4,800	Average Kids Per Day x 160 days
Youth Programs	Youth Sports	7,920	7,740	2,916	Registrations
	Youth Before/After School	18,800	18,800	18,800	Average Participants Per Week x 40 Weeks
	Youth Camp	3,250	3,250	3,700	Average Kids Per Week x 13 Weeks
	Home School PE	900	900	900	Average Kids Per Week x 30 Weeks
Teen Programs	Teen Center, Drop-In	9,382	9,581	5,939	Visitors
	Teen Camps Week	1,320	1,320	1,320	Average Kids Per Week x 12 Weeks
	Teen Camp Daily	79	87	41	Registrations
Adult Programs	Adult Classes	4,213	4,307	4,048	Registrations
Senior Programs	Senior Trips	1,515	1,312	1,245	Registrations
	Senior Drop-Ins	12,500	12,500	12,500	Visitors
	Senior Classes	290	290	290	Visits
	Senior Lunch Program	12,465	11,931	12,086	Lunches
Community Center	Fitness Room	2,030	2,036	2,122	Registrations
	Drop In Activities	3,038	2,566	2,884	Visitors
Special Events	Art Exhibit	23	15	26	Registrations
	Special Events	4,250	4,860	5,100	Participants

Sources: City of SeaTac, 2020; BERK Consulting, 2020.

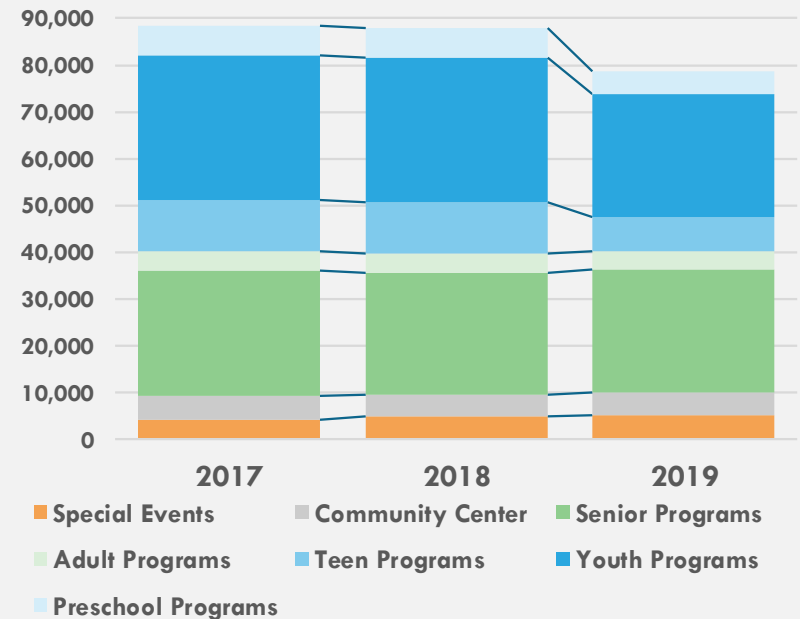
Efforts to Date

Current SeaTac Recreation Programming Participation by Category

The City's largest populations served by recreation programming is for youth; programming for people under the age of 20 years old make up over half of recreation programming.

Enrollment in preschool programs fell in 2019.

Programming Type	Total Participation			
	2017	2018	2019	Average %
Preschool Programs	6,400	6,400	4,800	7%
Youth Programs	30,870	30,690	26,316	34%
Teen Programs	10,781	10,988	7,300	11%
Adult Programs	4,213	4,307	4,048	5%
Senior Programs	26,770	26,033	26,121	31%
Community Center	5,068	4,602	5,006	6%
Special Events	4,273	4,875	5,126	6%



Sources: City of SeaTac, 2020; BERK Consulting, 2020.

Next Steps

Recreation Trends

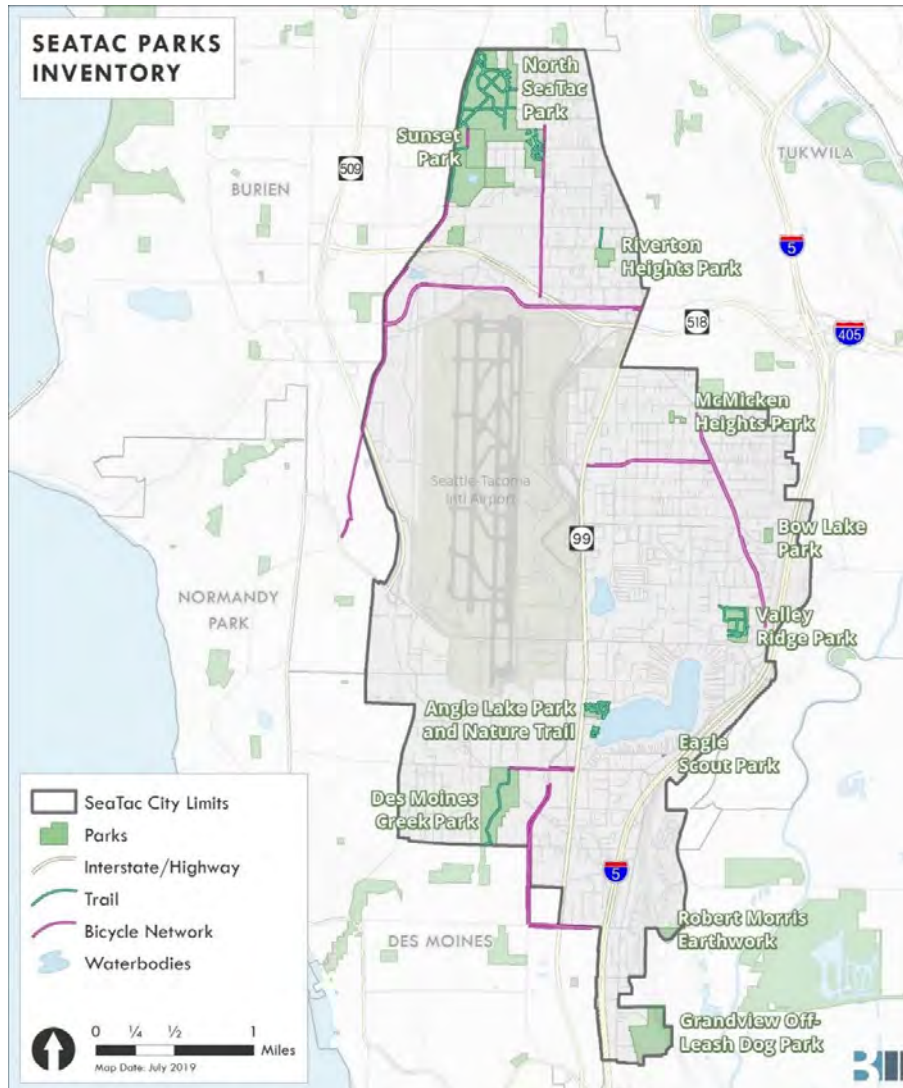
- Talking with staff about trends they have seen:
 - YMCA, peer parks departments
 - Community Center and recreation staff
- Does the community profile match the users of City PROS?
- Are there any groups that should have greater representation?





Access and Level of Service

System Inventory



Park	Acres	Facilities
Angle Lake Park	10.5	Active: Boat launch, stage, swimming area with lifeguard shack, spray park. Passive: Fishing, docks, open recreation area, three picnic shelters, barbecue area, restrooms.
Bow Lake Park	4	Passive: Open space.
Des Moines Creek Park	96	Passive: Paved pedestrian and biking trail with trailhead parking.
Eagle Scout Park	0	Passive: Landscaped street right-of-way.
Grandview Park	37	Passive: Dog park with fencing, trails, benches, kiosk, waste receptacles, open areas, and sani-cans.
McMicken Heights Park	2.7	Active: Tennis courts and playground equipment. Passive: Open area.
North SeaTac Park	165	Active: Baseball/soccer fields, playground equipment, outdoor basketball, BMX track, disc golf, and climbing boulder. Passive: Open area, botanical garden, picnic shelter, paved walking trails, restrooms. Indoor: Storage area, community/senior center.
Riverton Heights Park	6	Active: Playground equipment, basketball court. Passive: Picnic area, community lawn, and open space.
Sunset Park	18	Active: Baseball/soccer/softball fields, tennis courts. Passive: Paved walking trails, restrooms.
Valley Ridge Park	21	Active: Baseball/soccer/softball fields, tennis courts, skate park, playground equipment, hockey court, and basketball courts. Indoor: Community/teen center.
Westside Trail		Passive. The westside trail connects a variety of trails that were not previously connected. Currently it is not complete, but when finished would run along the west side of North SeaTac Park from South 128 th Street to South 136 th Street, continue on Des Moines Memorial drive and the SR509 extension, and then connect to the Des Moines Creek Park trailhead. The trail is comprised of existing, multi-use pathways, sidewalks, and bike lanes, depending on the segment.

Enhancing the Overall System

Access to parks

- Within a ½ mile (or closer)
- Trail connections

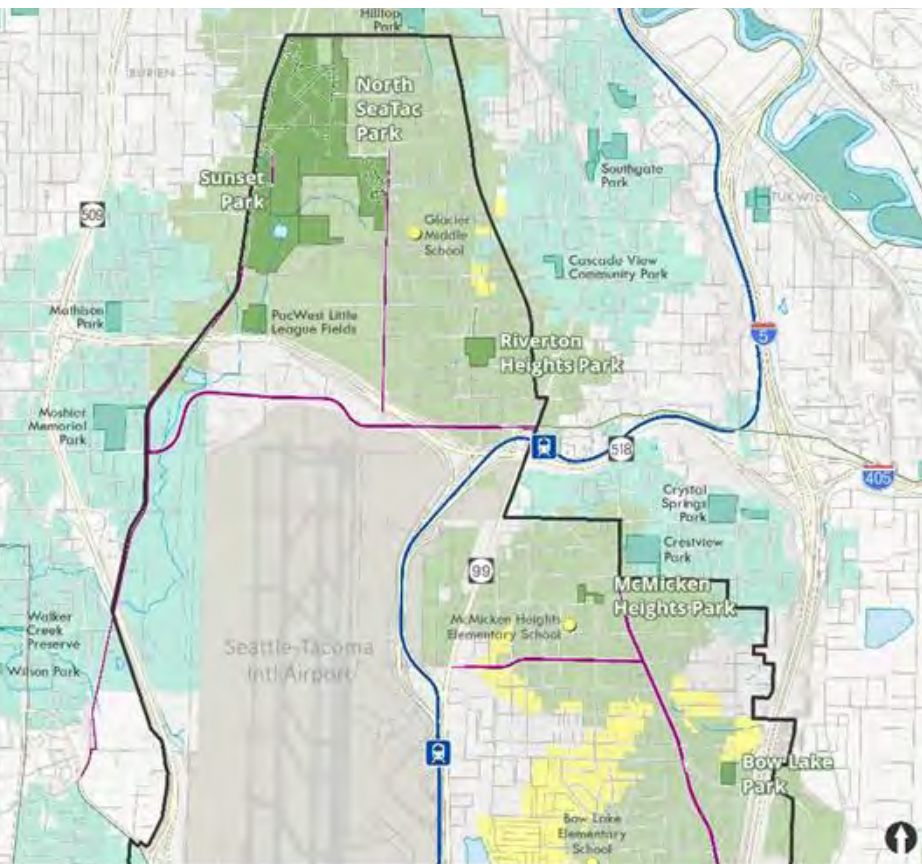
Quality of parks

- Mix of active and passive
- Community and neighborhood parks
- Gathering space

Service needs and demands

- Indoor recreational options
- More programs, events, opportunities
- Maintenance and safety

System Gaps – Half Mile Access – All Facilities



Public Facilities

- Parks Within City Limits
- Schools
- Parks Outside City Limits

Service Areas

- SeaTac Parks - 1/2 Mile Parcels
- SeaTac Schools - 1/2 Mile Parcels
- Non SeaTac Parks - 1/2 Mile Parcels

SeaTac City Limits

- Parcel Outlines
- Interstate/Highway
- Streets
- Trails
- Bicycle Network
- Link Light Rail
- Light Rail Station

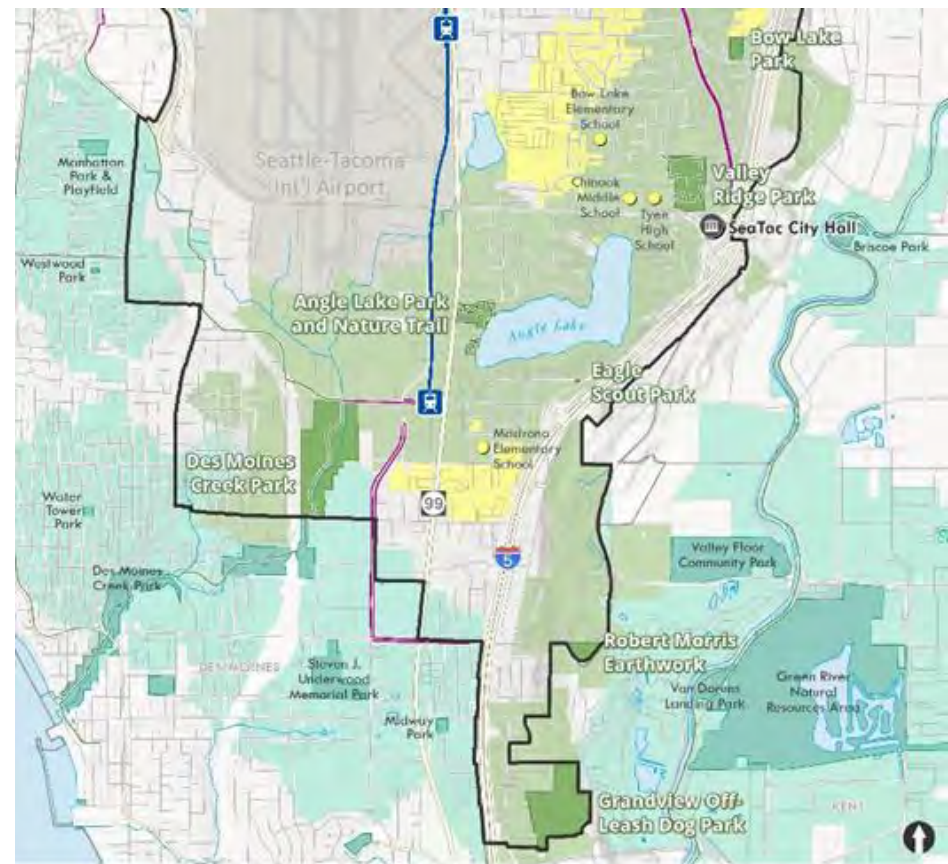
City Hall

- Waterbodies
- Streams

Map Data: September 2019

BERK

Note: Public Facilities Service Areas is defined by traveling 1/2 mile on streets or trails from a Service Area, SeaTac School, or Non-SeaTac Park. Distances from parks are calculated along a network consisting of SeaTac and King County street centerlines and trails. A 50 ft buffer was used on the parks layer in order to ensure good intersection between the transportation network used and the park boundary. Any intersection where a trail or road crosses a park boundary is considered an access point for that given park, and is used as a point from which distance traveled is calculated. It is noted that more accurate access points were not available in GIS format for this analysis.



Public Facilities

- Parks Within City Limits
- Schools
- Parks Outside City Limits

Service Areas

- SeaTac Parks - 1/2 Mile Parcels
- SeaTac Schools - 1/2 Mile Parcels
- Non SeaTac Parks - 1/2 Mile Parcels

SeaTac City Limits

- Parcel Outlines
- Interstate/Highway
- Streets
- Trails
- Bicycle Network
- Link Light Rail
- Light Rail Station

City Hall

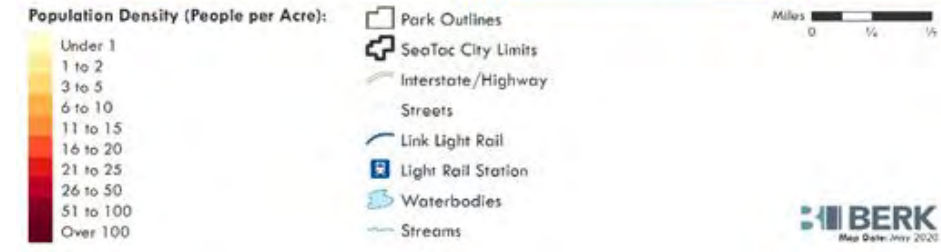
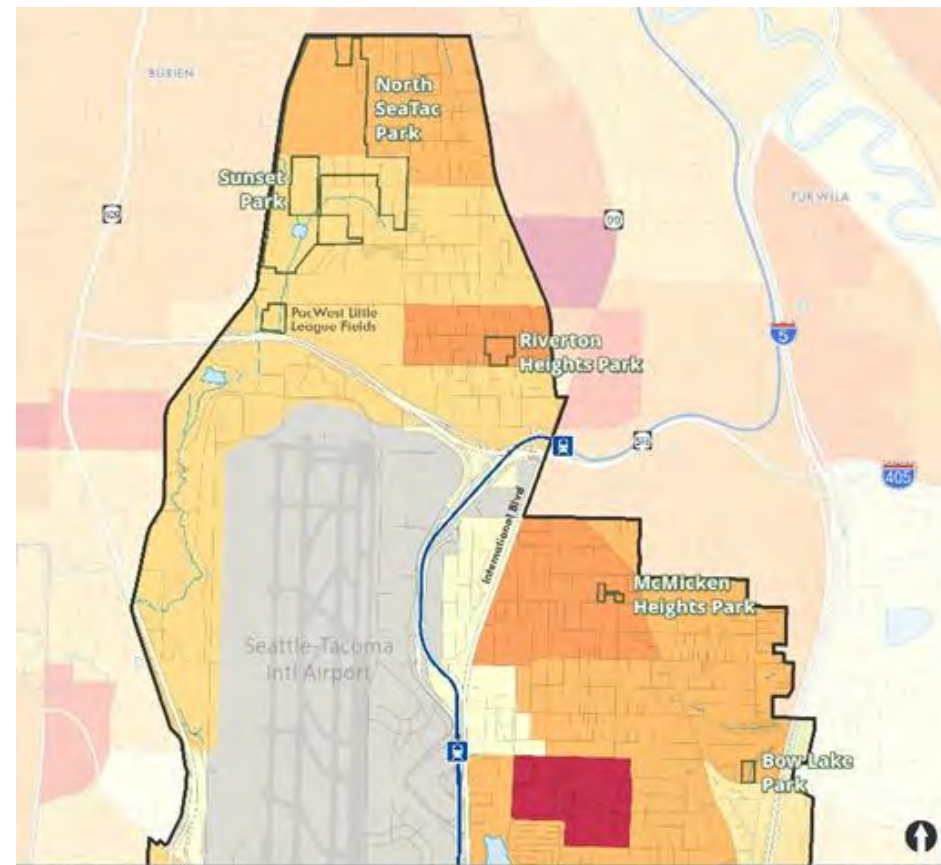
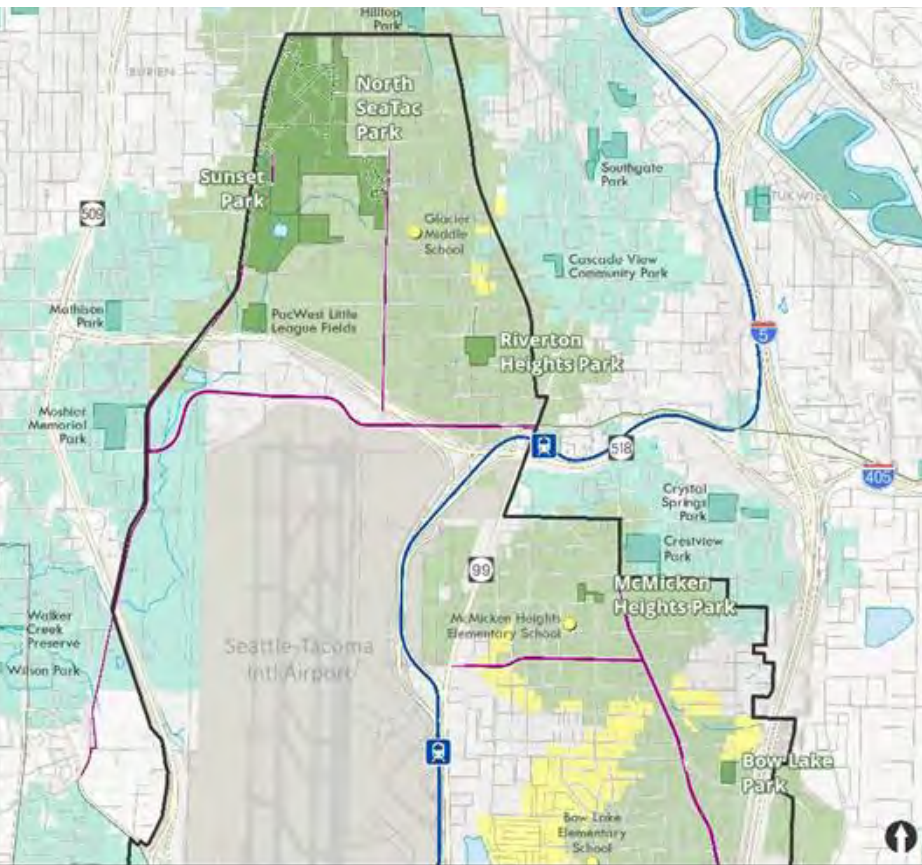
- Waterbodies
- Streams

Map Data: September 2019

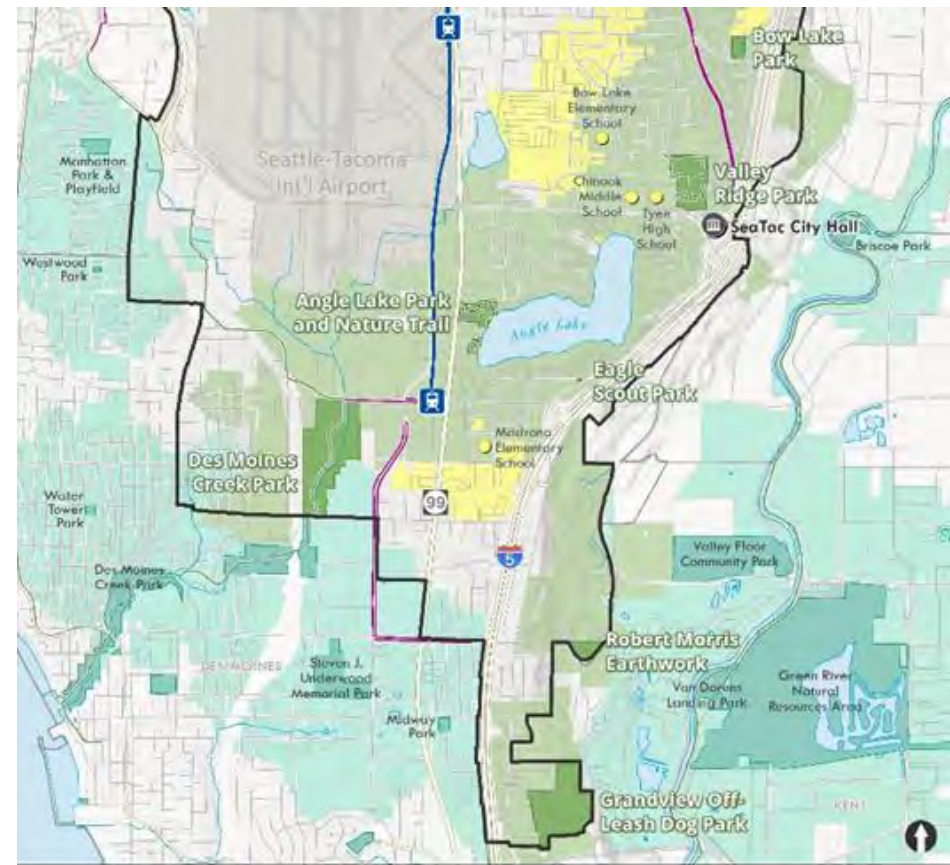
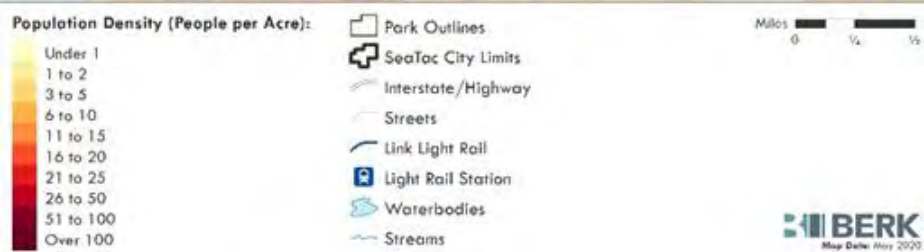
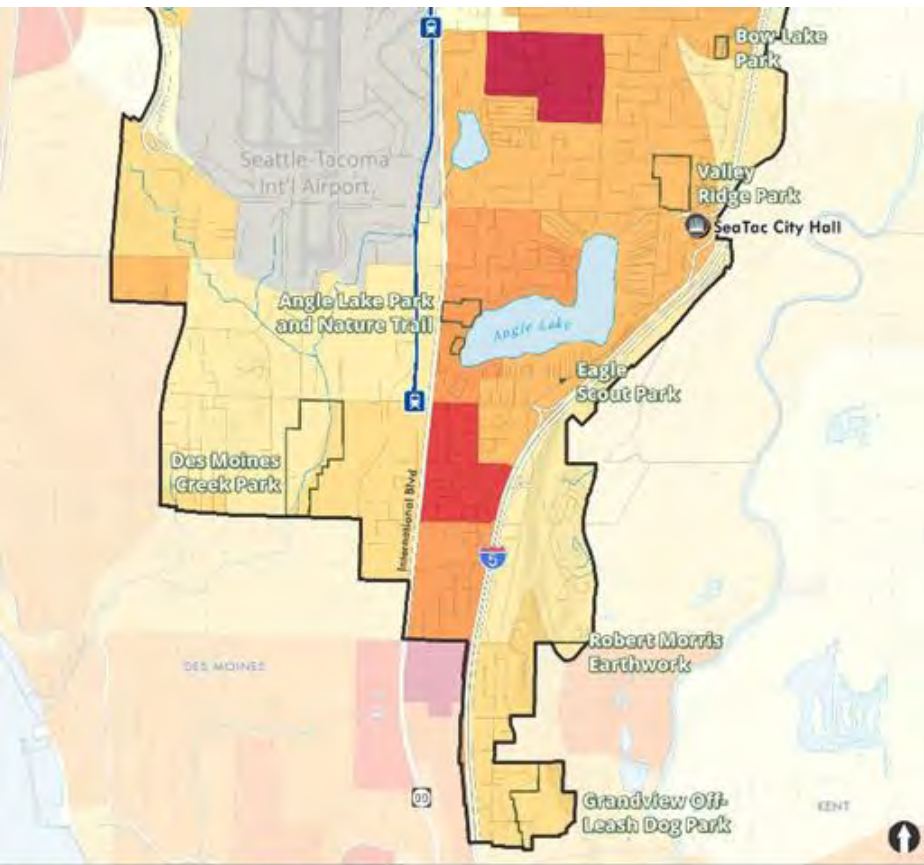
BERK

Note: Public Facilities Service Areas is defined by traveling 1/2 mile on streets or trails from a Service Area, SeaTac School, or Non-SeaTac Park. Distances from parks are calculated along a network consisting of SeaTac and King County street centerlines and trails. A 50 ft buffer was used on the parks layer in order to ensure good intersection between the transportation network used and the park boundary. Any intersection where a trail or road crosses a park boundary is considered an access point for that given park, and is used as a point from which distance traveled is calculated. It is noted that more accurate access points were not available in GIS format for this analysis.

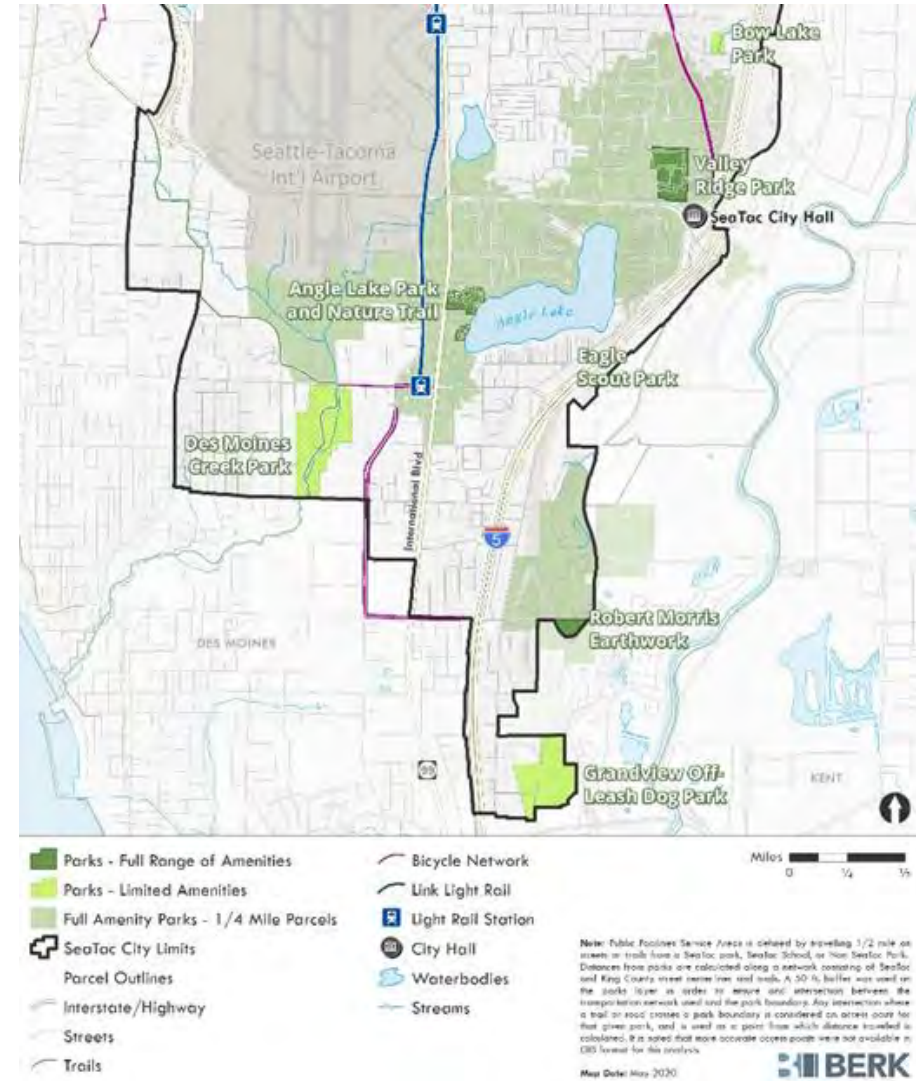
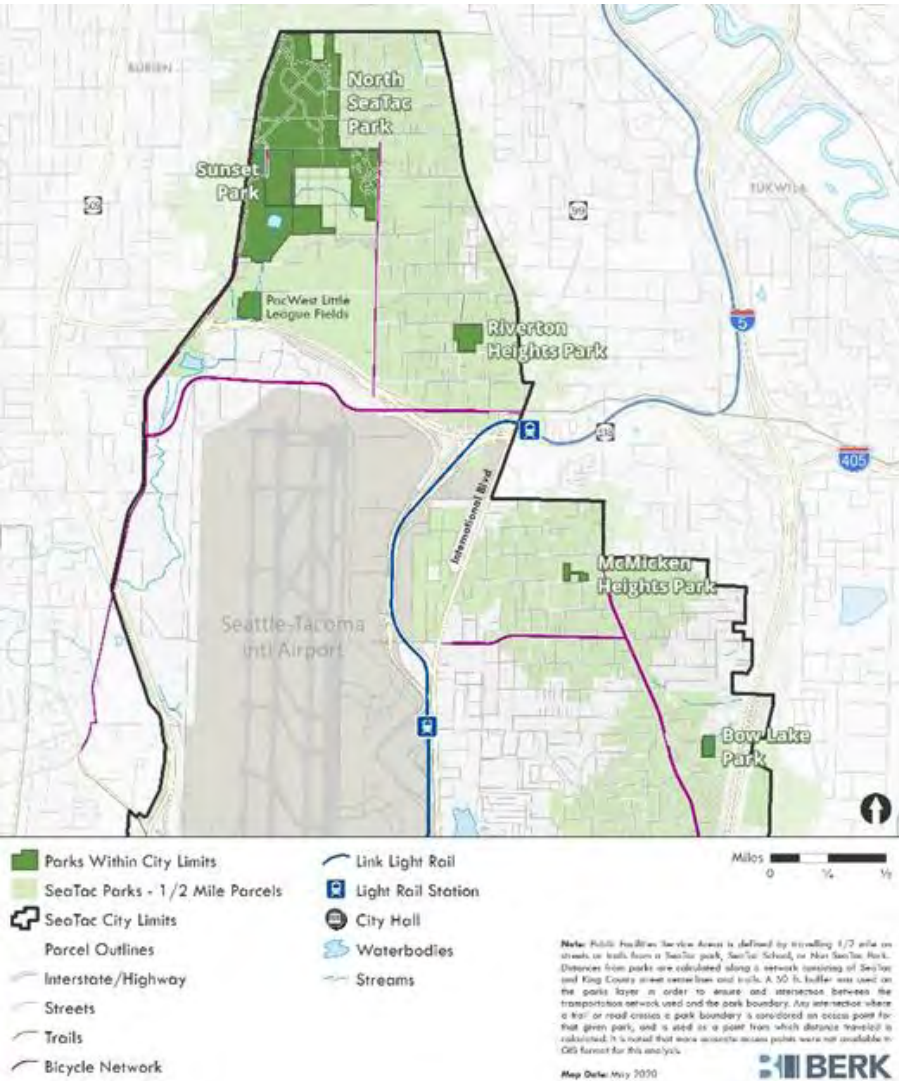
System Gaps – Access and Population Density



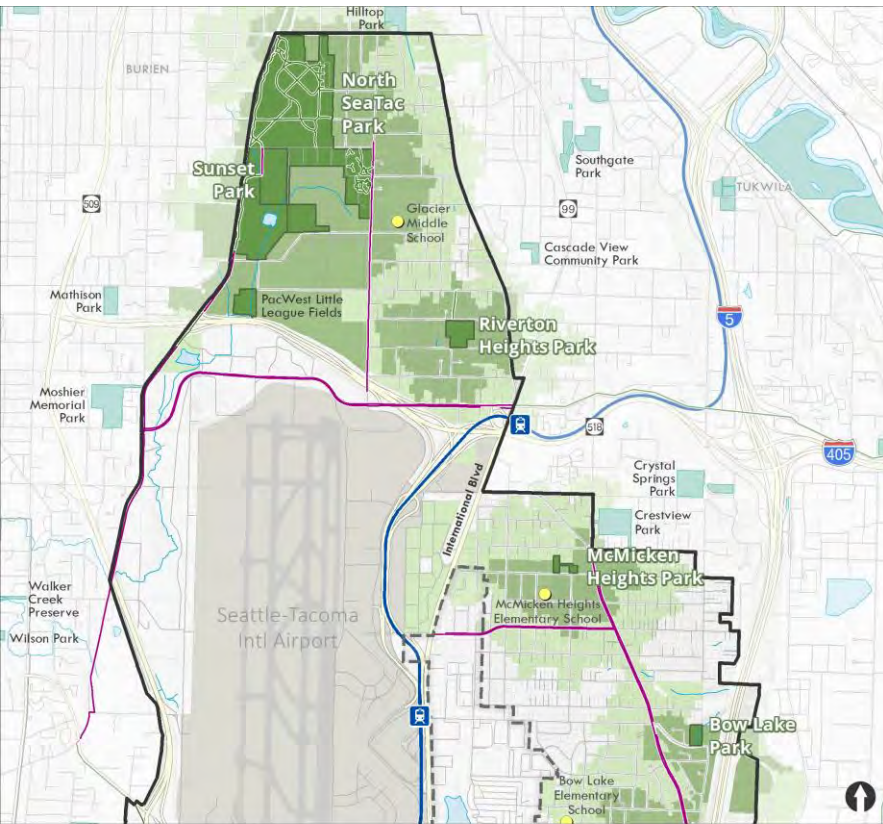
System Gaps – Access and Population Density



System Gaps – Half Mile Access – SeaTac Facilities



System Gaps – Quarter Mile Access – SeaTac Facilities



Public Facilities

- Parks Within City Limits
- Parks Outside City Limits
- SeaTac Parks - 1/4 Mile Parcels
- SeaTac Parks - 1/2 Mile Parcels
- Parcel Outlines

Service Areas

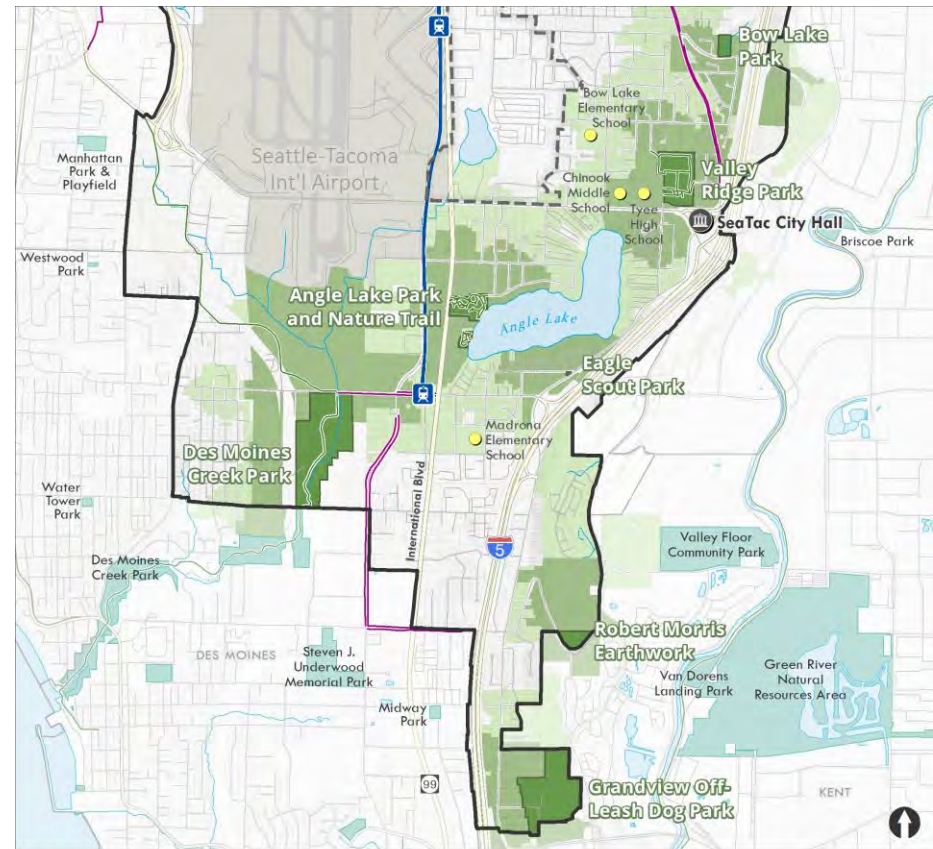
- SeaTac Parks - 1/4 Mile Parcels
- SeaTac Parks - 1/2 Mile Parcels
- Parcel Outlines

Map Legend:

- SeaTac City Limits
- City Center Overlay District
- City Hall
- Waterbodies
- Streams
- Interstate/Highway
- Streets
- Trails
- Bicycle Network
- Link Light Rail
- Light Rail Station

Note: Public Facilities Service Areas is defined by travelling 1/2 mile on streets or trails from a SeaTac park, SeaTac School, or Non SeaTac Park. Distances from parks are calculated along a network consisting of SeaTac and King County street centerlines and trails. A 50 ft. buffer was used on the parks layer in order to ensure and intersection between the transportation network used and the park boundary. Any intersection where a trail or road crosses a park boundary is considered an access point for that given park, and is used as a point from which distance traveled is calculated. It is noted that more accurate access points were not available in GIS format for this analysis.

Map Date: May 2020



Public Facilities

- Parks Within City Limits
- Parks Outside City Limits
- SeaTac Parks - 1/4 Mile Parcels
- SeaTac Parks - 1/2 Mile Parcels
- Parcel Outlines

Service Areas

- SeaTac Parks - 1/4 Mile Parcels
- SeaTac Parks - 1/2 Mile Parcels
- Parcel Outlines

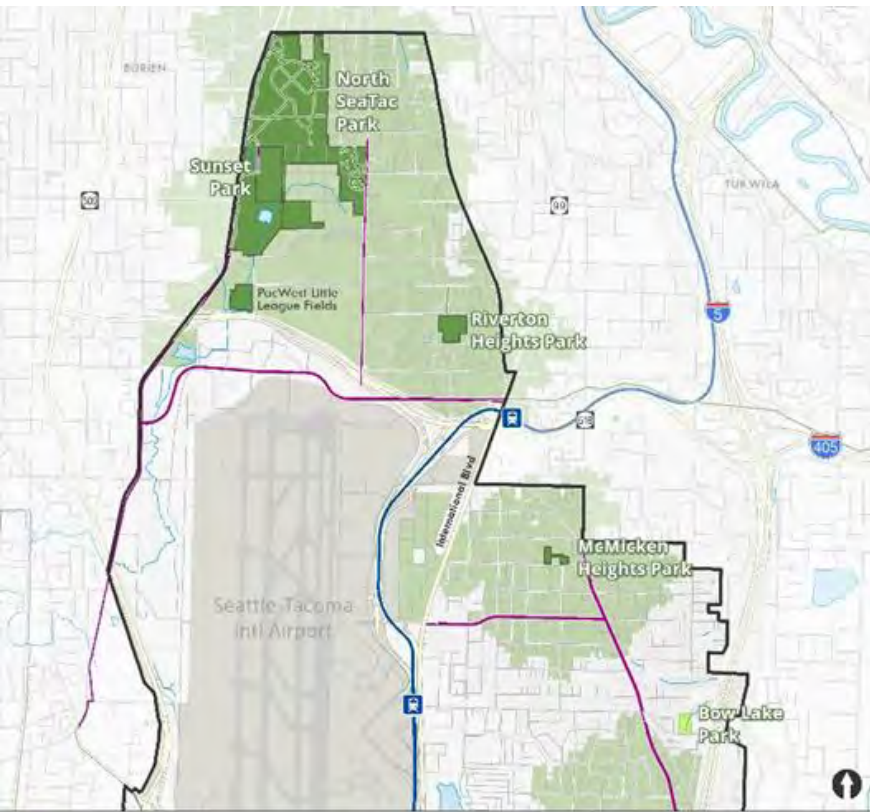
Map Legend:

- SeaTac City Limits
- City Center Overlay District
- City Hall
- Waterbodies
- Streams
- Interstate/Highway
- Streets
- Trails
- Bicycle Network
- Link Light Rail
- Light Rail Station

Note: Public Facilities Service Areas is defined by travelling 1/2 mile on streets or trails from a SeaTac park, SeaTac School, or Non SeaTac Park. Distances from parks are calculated along a network consisting of SeaTac and King County street centerlines and trails. A 50 ft. buffer was used on the parks layer in order to ensure and intersection between the transportation network used and the park boundary. Any intersection where a trail or road crosses a park boundary is considered an access point for that given park, and is used as a point from which distance traveled is calculated. It is noted that more accurate access points were not available in GIS format for this analysis.

Map Date: May 2020

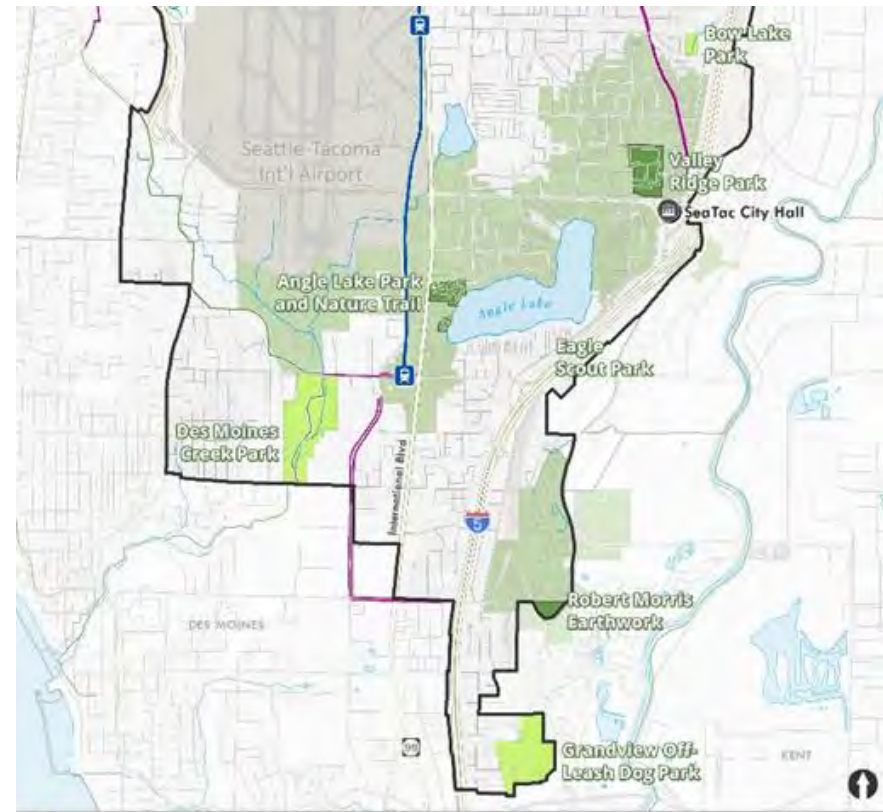
System Gaps – Neighborhood and Community Parks



- Parks - Full Range of Amenities
- Parks - Limited Amenities
- Full Amenity Parks - 1/4 Mile Parcels
- SeaTac City Limits
- Parcel Outlines
- Interstate/Highway
- Streets
- Trails
- Bicycle Network
- Link Light Rail
- Light Rail Station
- City Hall
- Waterbodies
- Streams

Note: Public Facilities Service Areas is defined by traveling 1/2 mile on streets or trails from a SeaTac park, SeaTac School, or Main Seattle Park. Distances from parks are calculated along a network consisting of SeaTac and King County street centerlines and trails. A 50 ft buffer was used on the parks layer in order to ensure good intersection between the transportation network used and the park boundary. Any intersection where a trail or road crosses a park boundary is considered an access point for that given park, and is used as a point from which distance traveled is calculated. It is noted that more accurate access points were not available in GIS format for this analysis.

Map Date: May 2020



- Parks - Full Range of Amenities
- Parks - Limited Amenities
- Full Amenity Parks - 1/4 Mile Parcels
- SeaTac City Limits
- Parcel Outlines
- Interstate/Highway
- Streets
- Trails
- Bicycle Network
- Link Light Rail
- Light Rail Station
- City Hall
- Waterbodies
- Streams

Note: Public Facilities Service Areas is defined by traveling 1/2 mile on streets or trails from a SeaTac park, SeaTac School, or Main Seattle Park. Distances from parks are calculated along a network consisting of SeaTac and King County street centerlines and trails. A 50 ft buffer was used on the parks layer in order to ensure good intersection between the transportation network used and the park boundary. Any intersection where a trail or road crosses a park boundary is considered an access point for that given park, and is used as a point from which distance traveled is calculated. It is noted that more accurate access points were not available in GIS format for this analysis.

Map Date: May 2020



Levels of Service – Current Policy

- LOS is the amount of PROS amenities necessary to meet current and future needs
- 12.3 acres per 1,000... requires 163.3 acres by 2035 – required for concurrency with GMA.
- Community center: 1,020 sq. ft. per 1,000 population – not required for concurrency
- City-owned/operated facilities – not required for concurrency

Community parks:	1.70 acres per 1,000
Neighborhood parks:	0.27 acres per 1,000
Trails/linear parks:	251.60 lineal feet per 1,000
Off-leash dog park:	0.40 acres per 1,000
Baseball/softball fields-adult:	0.08 fields per 1,000
Baseball/softball fields-youth:	0.15 fields per 1,000
Basketball courts:	0.23 courts per 1,000
Football/soccer fields:	0.23 fields per 1,000
Picnic shelters:	0.10 shelters per 1,000
Playgrounds:	0.24 playgrounds per 1,000
Skateboard parks:	0.03 parks per 1,000
Tennis court:	0.36 courts per 1,000

Levels of Service: Proposed

Move to measures that:

- Assess concurrency based on system investment
- Simplify the type of facilities tracked
- Relate LOS both to capital investment and operations to support budgeting
- Respond to community needs and demands
- Offer flexibility in types of investment to respond to needs/trends of a diverse community

LOS Metric	Measure	2018 Standard	Proposed Standard
System Investment	\$ per capita	\$2,491	2,500
Annual M&O Investment	\$ per capita	\$100	\$100
Additional Facilities: Indoor Space Facilities	SF per 1,000 pop	1,023 Community Centers	1,020
Additional Facilities: Community and Neighborhood Parks	Acres per 1,000	1.7 Community .27 Neighborhood	TBD
Additional Facilities: Trail Miles	Feet per 1,000	251.6	TBD

Enhancing the Overall System

Access to parks

- Within a ½ mile (or closer)- address with policies to fill identified gaps with facilities and programs
- Connected trail system- address with LOS and policies

Quality of parks

- Mix of active and passive options plus gathering space – address with policies
- Community and neighborhood parks – address with policies and LOS

Service needs and demands

- Indoor recreational options – address with policies and LOS
- More programs, events, opportunities – address with policies and LOS
- Maintenance and safety- address with policies and LOS

Enhancing the Overall System - Discussion

Access to parks

- Within a ½ mile (or closer)- address with policies to fill identified gaps with facilities and programs
- Connected trail system- address with LOS and policies

Notes:

- Helps identify priority areas for acquisition of new facilities
- ½ mile access is current policy (Policy 10-C)
- ½ mile is promoted by TPL, NRPA, ULI and other organizations
- ¼ mile may be more appropriate in urban centers
- ¼ mile could be an aspirational goal in City center or beyond
- Trails and connections could be integrated with the City's non-motorized transportation planning
- Community way-finding may also be helpful

Is this the right approach for SeaTac?

Enhancing the Overall System - Discussion

Quality of parks

- Mix of active and passive options plus gathering space – address with policies
- Community and neighborhood parks – address with policies and LOS

Notes:

- Consistent with land use policies in Comprehensive Plan
- Community and neighborhood park classifications could be helpful for grant applications
- Policies will define community and neighborhood parks based on size and mix of amenities
- Provides access to a mix of amenities
- Policies will prioritize new locations based on identified needs and gaps
- Could build new facilities or improve existing
- Opportunities for partnerships

Is this the right approach for SeaTac?

Enhancing the Overall System - Discussion

Service needs and demands

- Indoor recreational options – address with policies and LOS
- More programs, events, opportunities – address with policies and LOS
- Maintenance and safety- address with policies and LOS

Notes:

- Capital investment provides a better measure of concurrency than acres.
- Location decision for indoor facilities can be based on gap analysis and solidified with policy language.
- O&M helps to budget for continuation of existing system as the community grows.

Is this the right approach for SeaTac?

Policy Guidelines for Improvement or Acquisition

- Meet recreation demand & need as shown in PROS Plan
- Meet other City Initiatives (such as: Human Services Needs Assessment, City Center, Economic Development)
- Consider PSRC Opportunity Index:
<https://www.psrc.org/opportunity-mapping>
- Serve high population density
- Areas that lack recent investment
- Partnership opportunities (e.g. schools or other facilities)
- Meets minimum size requirements and can support a community or neighborhood park, provides indoor activity space, or builds trail connections

Are these the right considerations?



System Plan

GRANDVIEW OFF-LEASH DOG PARK

OPPORTUNITY AREAS

-  **Forest**
 - add or improve signage
 - invasive species management
- Connections**
 -  • improve trails within the site and to the community
 -  • add wayfinding elements across park and to surrounding neighborhood
 -  • add or improve city or neighborhood landmarks
 -  • improve sightlines
- Activity**
 -  • add seating and a viewing areas
 -  • improve trails and wayfinding
 -  • add covered shelter
 -  • add amenities for small dogs
- Entry**
 -  • add signage
 -  • improve accessibility
 -  • add restroom facilities
-  **Site Boundary**



DES MOINES CREEK TRAILHEAD

OPPORTUNITY AREAS

Forest

- add or improve signage
- invasive species management
- improve sightlines along trail

Activity

- add seating and picnic amenities
- provide passive recreation opportunities
- add educational opportunities

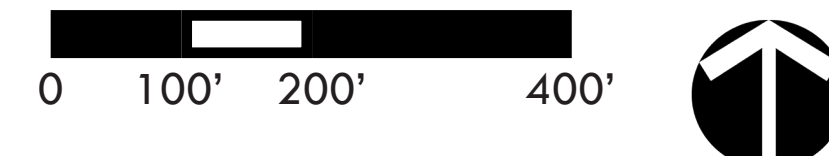
Connections

- add and improve trails
- add wayfinding elements across park and to surrounding neighborhood
- add or improve neighborhood landmarks
- improve sightlines

Entry

- new entry and parking area
- improve accessibility
- add new restroom facilities

Site Boundary



ANGLE LAKE PARK

OPPORTUNITY AREAS

-  **Activity**
 - maintain park programming and update amenities as needed
-  **Circulation**
 - define drop-off zone
 - improve pedestrian experience
- Connections**
 -  • add wayfinding elements to the neighborhood
 -  • add or improve city or neighborhood landmarks
-  **Waterfront**
 - reduce conflicts between waterfront users
 - reconfigure pier
 - add restroom facilities

 Site Boundary



0 25' 50' 100'



VALLEY RIDGE PARK

OPPORTUNITY AREAS

-  **Sports Field**
 - add seating and shade
 - enhance landscaping
-  **Activity**
 - increase shade opportunities
 - enhance landscaping
 - enhance recreational opportunities
-  **Connections**
 - wayfinding throughout the park, to the surrounding neighborhood & major landmarks
- 
 - add or improve city and neighborhood landmarks

 Site Boundary



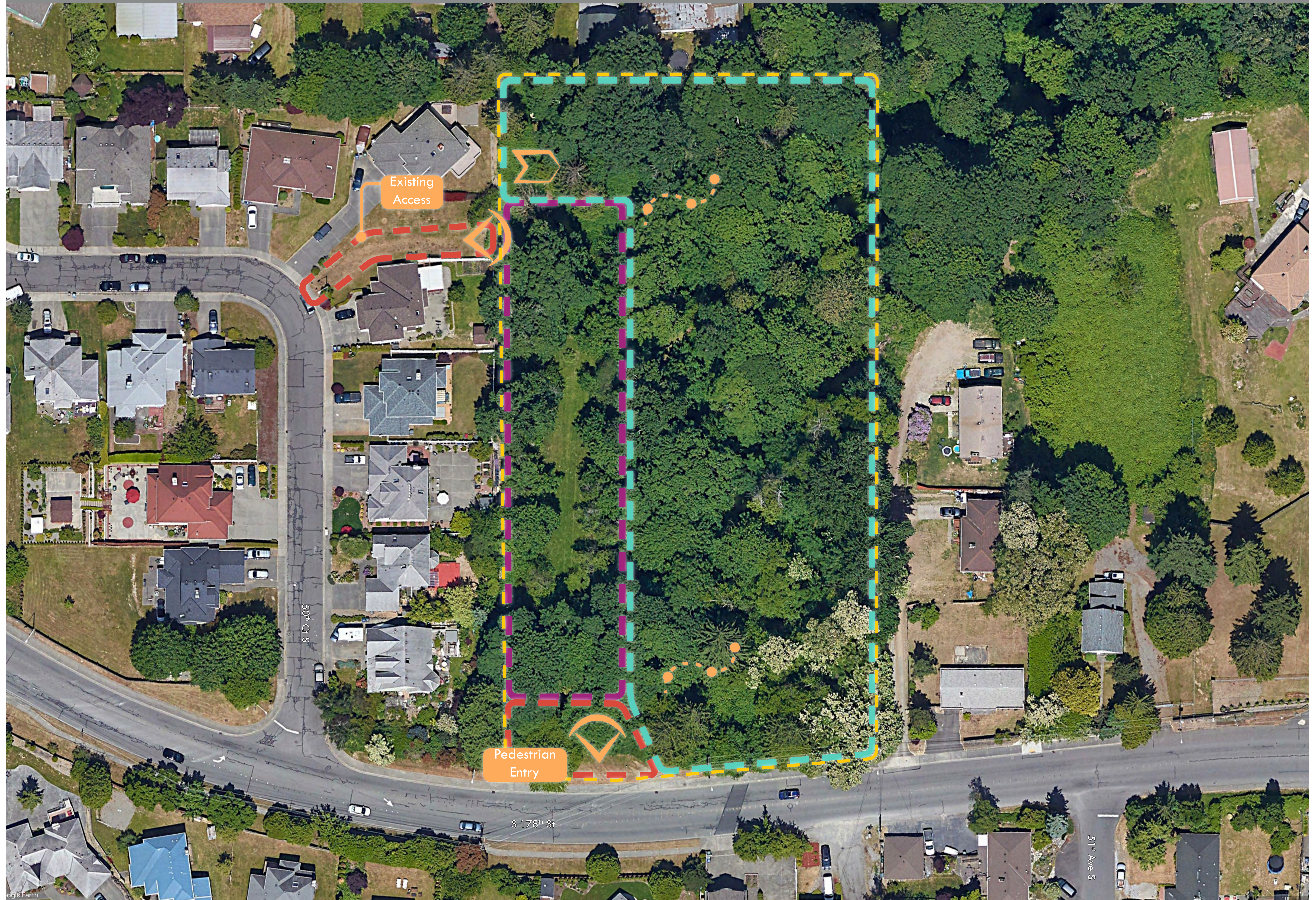
0 50' 100' 200'



BOW LAKE PARK

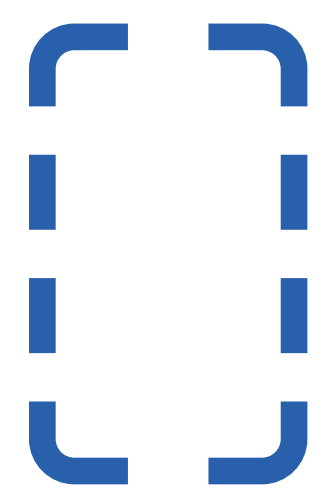
OPPORTUNITY AREAS

- 
Forest
 - invasive species management
- 
Entry
 - add signage
 - enhance landscape
 - improve views into the park
- 
Activity
 - improve recreational opportunities ie. nature play and picnic amenities
- 
Connections
 - improve sightlines into and throughout the park
 - add wayfinding elements within the park
 - add informal trail through the site and to the neighborhood
- 
Site Boundary



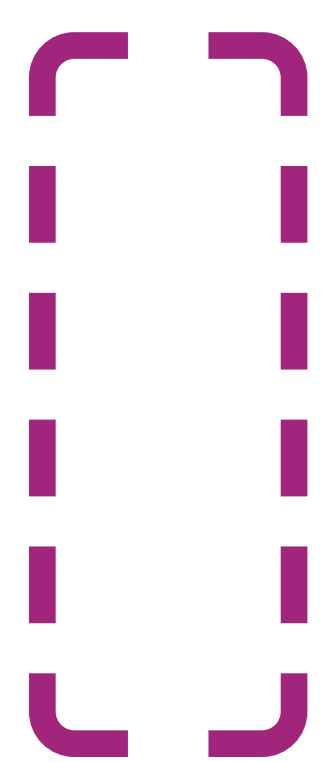
MCMICKEN HEIGHTS PARK

OPPORTUNITY AREAS



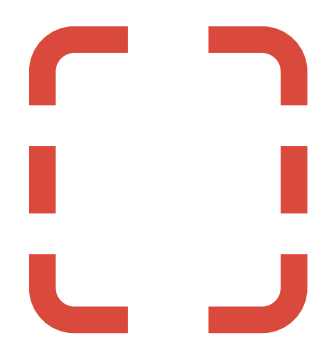
Play

- reconfigure/relocate court
- expand play opportunities (ie. splash pad)



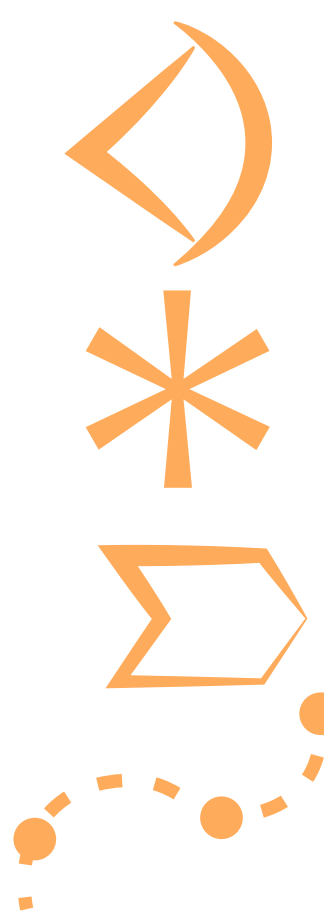
Activity

- improve recreational opportunities (i.e. off-leash dog park, event space, picnic amenities, zip line)
- add picnic and seating areas
- enhance landscape



Entry

- improve signage
- improve accessibility

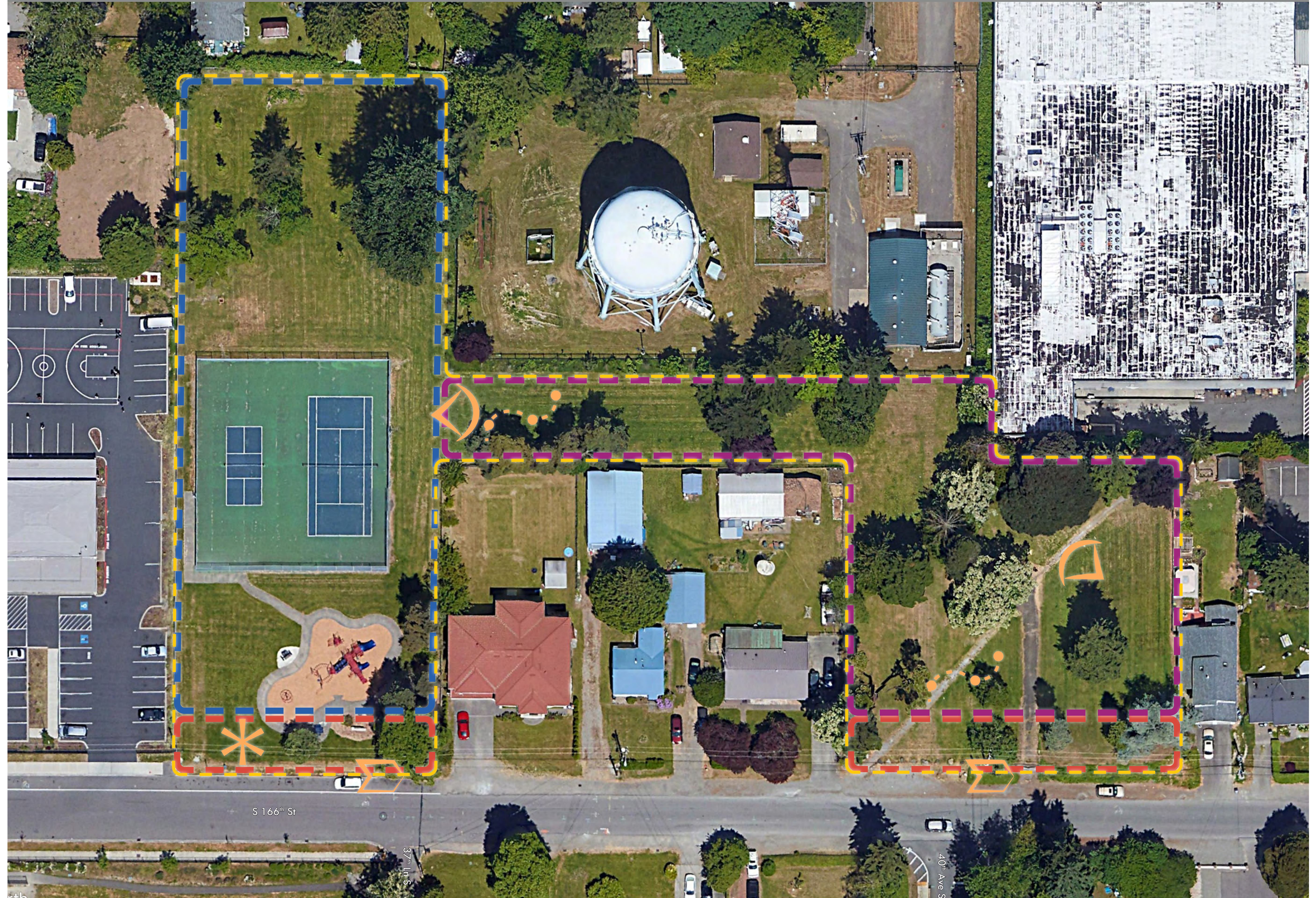


Connections

- improve sightlines throughout the park
- incorporate neighborhood landmarks
- add wayfinding elements to the surrounding neighborhood
- add or improve trails



Site Boundary



RIVERTON HEIGHTS PARK

OPPORTUNITY AREAS

Activity

- add more opportunities for play (i.e. splash pad)
- add event or performance space
- improve opportunities for passive recreation
- improve shade and seating

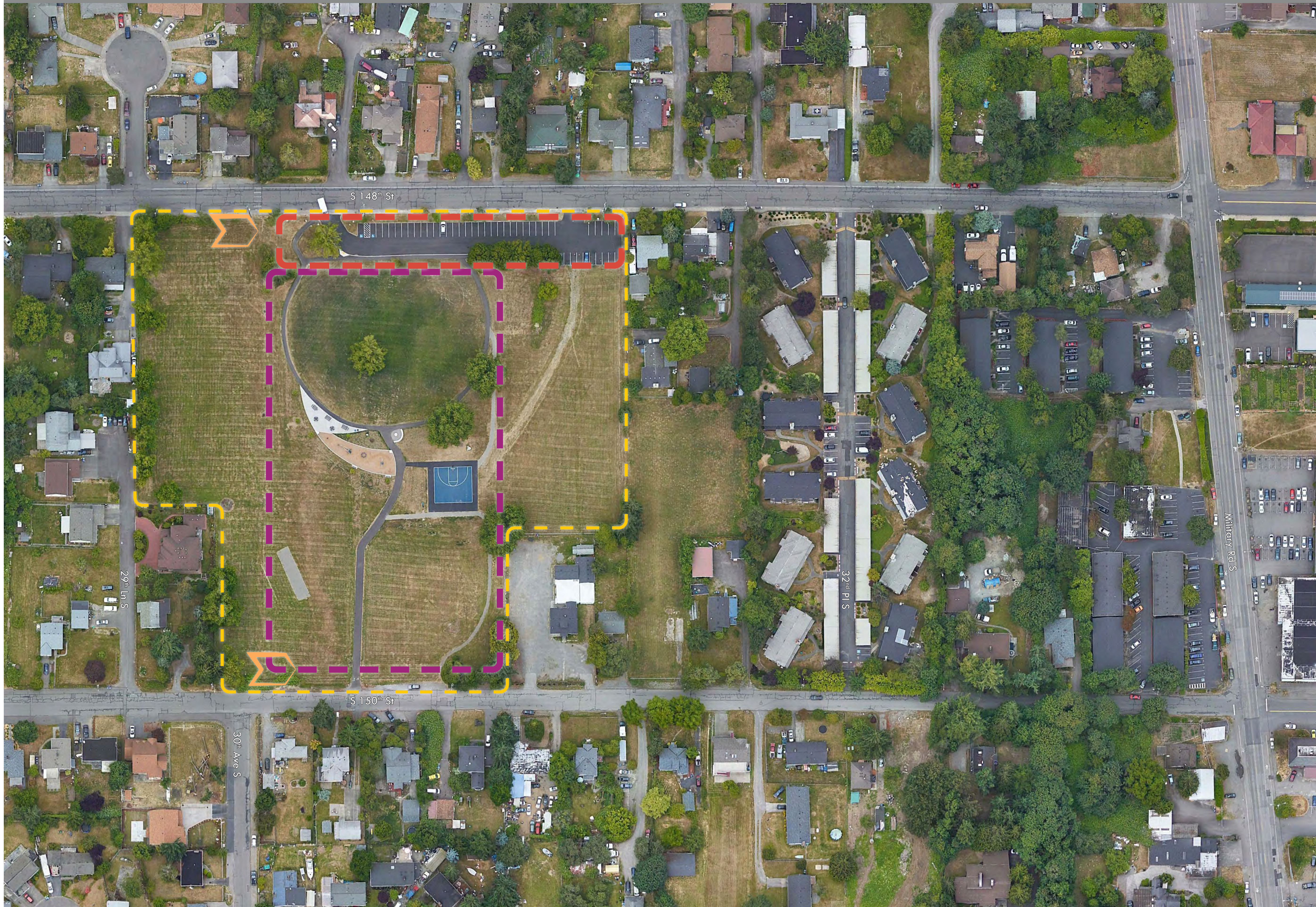
Entry

- add restroom facilities

Connections

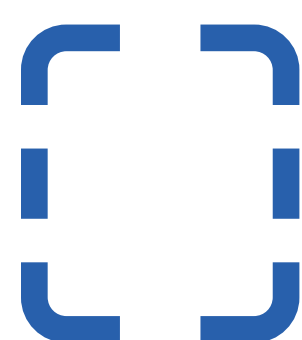

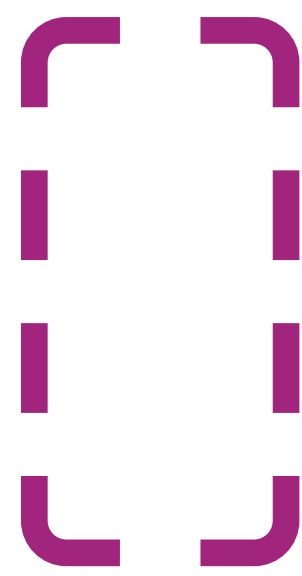


- add wayfinding elements to the surrounding neighborhood

Site Boundary



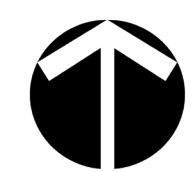
SUNSET PLAYFIELDS

OPPORTUNITY AREAS

- 
Sports Field
 - improve fields, ie. synthetic, lights, etc.
- 
Entry
 - expand parking
 - improve accessibility
- 
Activity
 - improve opportunities for passive recreation, ie. walking paths, picnic
 - improve sightlines
- 
Connections
 - add wayfinding elements to nearby landmarks
 - improve trails throughout the park and connecting to other park properties
- 
Site Boundary



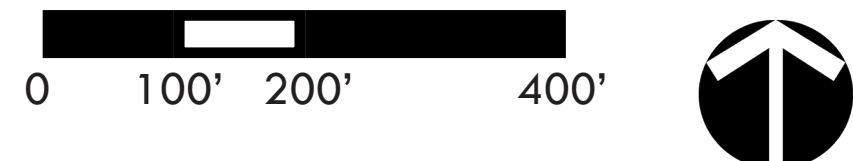
0 50' 100' 200'



NORTH SEATAC PARK (NORTH)

OPPORTUNITY AREAS

- Entry**
 - improve parking and accessibility
 - add wayfinding
- Activity**
 - add restrooms
 - provide opportunities for family activities
 - add seating and picnicking amenities
- Sports Field**
 - improve fields, ie. synthetic, lighting, etc.
 - expand multi-use
- Forest**
 - enhance wildlife habitat
 - invasive species management
- Connections**
 - improve or define trails throughout the park
 - add wayfinding elements to local landmarks and throughout the park



NORTH SEATAC PARK (SOUTH)

OPPORTUNITY AREAS

- Entry**
 - add or improve signage
 - improve accessibility
- Forest**
 - limit access to lake
 - enhance wildlife habitat
 - provide educational opportunities
- Connections**
 - improve and add trails throughout the park
 - improve perimeter trail and viewing into pond area
 - improve sightlines throughout the park
 - add wayfinding elements to local landmarks and destinations



PROGRAMS & FACILITIES

ADD & IMPROVE TRAILS



CLIMBING WALL



GATHERINGS & EVENTS



P-PATCH



SPORTS COURTS



ENHANCED LANDSCAPES



DOG PARKS & AMENITIES



SPLASH PADS



NATURE PLAY



FIELDS & LAWNS



INFORMAL EDUCATION



SIGHTSEEING





Next Steps

Next Steps

Next time we meet with you:

- Updated LOS and estimates for 2026, 2035, 2040
- Update policies
- Capital facilities plan

Draft Plan to follow

