



Sidewalk Advisory Committee Revised Meeting Agenda

November 21, 2019

6:00 to 7:00 PM

Council

Pam Fernald, Chair

Rick Forschler

Clyde Hill

Community Members

Dick Jordan

Jill Aldrich

Kathleen Brave

David Korthals

Miranda Hemmings

X

Staff Coordinators

Will Appleton

Public Works Director

Florendo Cabudol

City Engineer

**Note: A quorum of the Council
may be present.**

ITEM	TOPIC	PROCESS	WHO	TIME
1	Call to Order		Chair	5
2	Public Comment (moved to the end of the meeting)	Please raise your hand if you'd like to speak. When called on, please give your name. Public comments are limited to 10 minutes total and three minutes per individual speaker.	Chair	10
4	Complete Scoring & Finalize Project Selection	Discussion/Action	Florendo Cabudol	30
6	Adjourn		Chair	5



MEMORANDUM

To: Sidewalk Advisory Committee
Through: William Appleton, Public Works Director
From: Florendo Cabudol, City Engineer
Date: 11/15/19
Subject: Updated Project Selection Materials and Example Scoring of Project Candidates

Purpose:

The purpose of this agenda item is to finalize scoring of project candidates and confirm selection for the next Sidewalk Project.

Background:

At the previous meeting, staff presented the scoring worksheet and pedestrian volume data for each project candidate as listed below (also see attached map):

1. 32nd Ave S, S 170th St to S 176th St
2. 32nd Ave S, S 200th St to S 204th St
3. S 144th St, Military Rd S to 24th Ave S
4. S 198th St, 32nd Ave S to Military Rd S
5. S 142nd St, 24th Ave S to 29th Ave S

Also, the Committee finalized the weight factors for each of the following performance attributes that allocates a corresponding weighted score factor. Below are the results (percentage assigned to each attribute; please see attached Performance Attribute Matrix for detailed results):

- Mobility/Connectivity = 23.8%
- Community Support = 9.5%
- Right-of-Way Impacts = 23.8%
- Accessibility = 23.8%
- Pedestrian Volume = 14.3%
- Funding = 4.8%

Attached to this memo are the updated scoring worksheets that include the above weight factor. To help the Committee, staff has updated the scoring worksheets to include a raw score for the following attributes (shown in gray on the worksheets; based on information for Performance Attribute Scale):

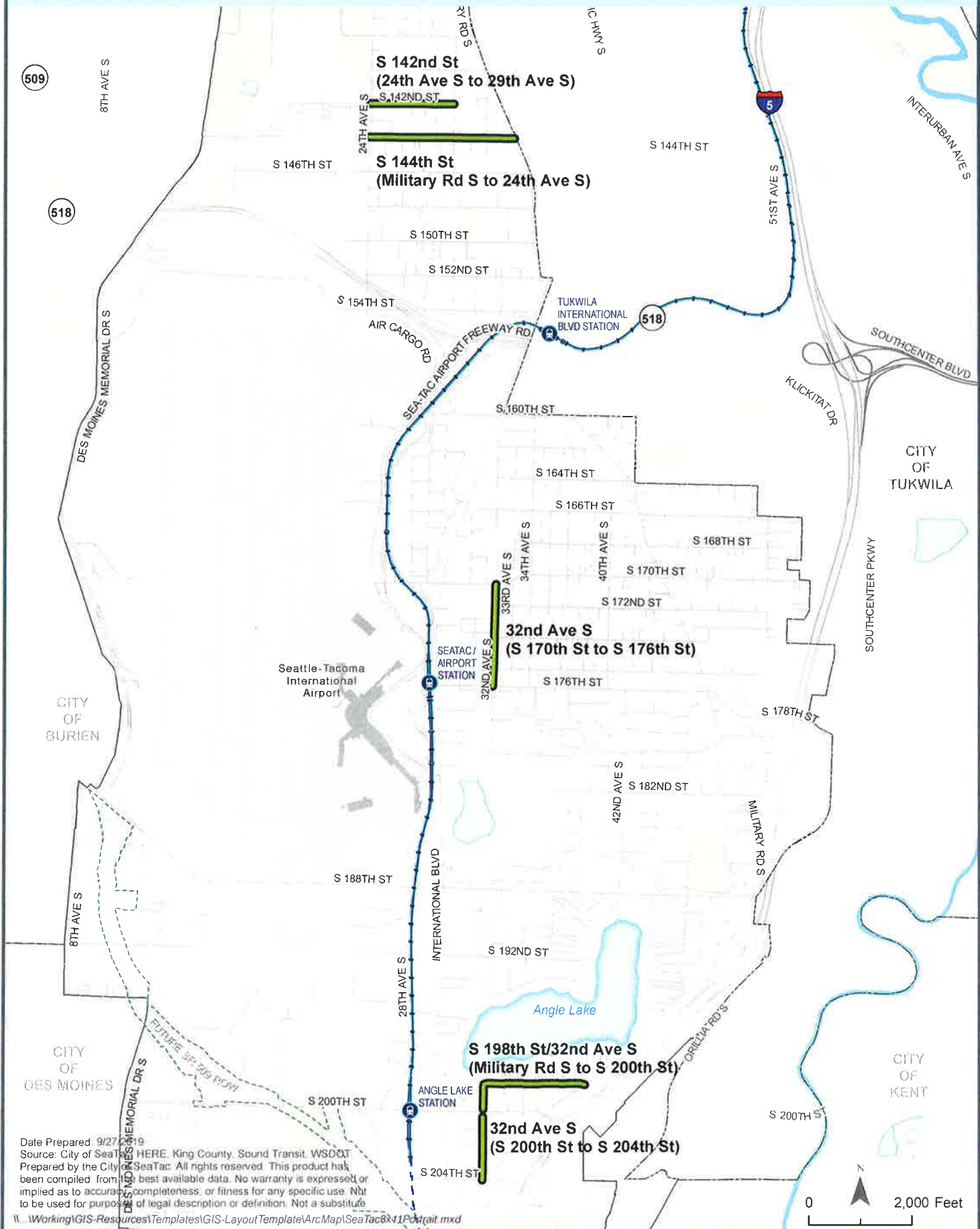
- Accessibility – the scores were based on inventory data from the City’s ADA Self-Assessment and Transition Plan (see attached Accessibility Maps)
- Pedestrian Volume – scores were based off of the pedestrian volumes previously submitted to the Committee
- Funding – scores were based on the staff’s knowledge of what grant(s)/outside funding is allocated to each candidate

Staff is requesting the Committee to complete the raw scoring for the remaining attributes below (shown in yellow on the worksheets):

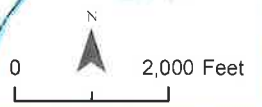
- Mobility/Connectivity
- Community Support
- Right-of-Way Impacts

To further help in understanding the scoring procedure, I self-scored the candidates and included the results for the Committee’s reference.

Prospective Sidewalk Improvement Projects



Date Prepared: 9/27/2019
 Source: City of SeaTac HERE, King County, Sound Transit, WSDOT
 Prepared by the City of SeaTac. All rights reserved. This product has been compiled from the best available data. No warranty is expressed or implied as to accuracy, completeness, or fitness for any specific use. Not to be used for purposes of legal description or definition. Not a substitute for a professional survey.
 W:\Working\GIS-Resources\Templates\GIS-LayoutTemplate\ArcMap\SeaTac8x11Portrait.mxd



PERFORMANCE ATTRIBUTE MATRIX
2019 Project Selection

Core Values for Each Project:

Safety - Each project will provide safe passage for pedestrians
Inclusive - All public roads in SeaTac are considered for project selection

*Which attribute is more important to the purpose and need of the project?
 [Total the amount of times each attributes letter is listed to determine scoring weight factors]*

Mobility/Connectivity	A	A	C	A	A	A	TOTAL	%
Community Support	B	C	C	D	E	B	2.0	9.5%
Right of Way Impacts	C	C	D	D	C	C	5.0	23.8%
Accessibility	D	D	D	D	D	D	5.0	23.8%
Pedestrian Volume	E	E	E	E	E	E	3.0	14.3%
Funding	F	F	F	F	F	F	1.0	4.8%

Attribute rating completed during 10/17/19 Sidewalk Committee meeting **21.0** **100%**

PERFORMANCE ATTRIBUTE AND DESCRIPTION FOR SIDEWALK PROJECT SELECTION

**Core Values for Each Safety - Each project will provide safe passage for pedestrians
Project:
Inclusive - All public roads in SeaTac are considered for project selection**

Performance Attribute	[Sidewalk Project Candidate] Description of Attribute
Mobility/Connectivity	An assessment of mobility and connectivity both within the neighborhood and with the overall City sidewalk network. Connecting neighborhood/residential sidewalks to sidewalks on arterial roads. Assessment of access to schools, transit, and neighborhood destinations (community center, places of worship, library, recreation facilities, businesses)
Community Support	An assessment of community support/demand for pedestrian improvements within the proposed project area
Right of Way Impacts	An assessment of the use of existing right of way and impact to adjacent parcels. An assessment of impacts to existing developed parcels.
Accessibility	Does project address/remove barriers as identified in ADA Self-Assessment and Transition Plan? (Example: replaces ADA ramps, repairs existing upheaved sidewalks); Should project be prioritized to remove barriers?
Pedestrian Volume	Foot traffic volume; Current and Projected
Funding	Are there private/grant funding that can be leveraged for this project?

PERFORMANCE ATTRIBUTE SCALES

[Sidewalk Project Candidate]

Performance Attribute Scales

Using a score of 1 as lowest and 5 as highest. Define the rationale for a score of 1 and 5 for each attribute.

Performance Rationale

1 = Not connecting to existing sidewalk network; 3 = connects to and extends existing sidewalk network; 5 = completes gap and connects existing sidewalk network

1 = no support or no requests for installing sidewalks, 3 = documented requests for sidewalk; 5 = sidewalks requested or petitioned for by greater than 50% of residents/property owners along segment

1 = significant impacts to existing parcels resulting in full takes or difficult negotiations; 3 = partial takes; 5 = no right of way impacts, all improvements within existing right of way

1 = no barriers identified along segment; 3 = 1 to 3 barriers addressed by project; 5 = 3 or more barriers addressed by project

1 = no pedestrian /foot traffic volumes documented along segment; 3 = less than or equal to 10 recorded pedestrian/foot traffic volume per peak hour; 5 = greater than 10 recorded pedestrian/foot traffic volume per peak hour

1 = no grants or private funding allocated for project; 3 = grants/private funding totaling up to \$200,000 obtained for project; 5 = grants/private funding totaling more than \$200,000 obtained for project

PROJECT INFORMATION

Site 1 - 32nd Ave S from S 170th St to S 176th St

Project Description

This project is identified in the 2015 SeaTac Transportation Master Plan as Public Works Capital Improvement Project ST-141. Project consists of reconstructing roadway, constructing storm drainage infrastructure, concrete curb, gutter, and sidewalk, and sharrows (shared vehicular/bicycle lanes).

Potential to include undergrounding overhead utilities, landscaping, and pedestrian lighting. Right-of-way required to build out 60-ft street section.

Project Purpose and Need

Dedicated pedestrian facilities along 32nd Ave S do not exist along this segment. This local road links a high density residential area (3 King County Housing Authority housing complexes along with single family residences) to transit services on S 170th St, S 176th St, and International Blvd. Able to leverage \$500K from Sound Transit Access System grant to help fund this project because it provides safe access to the Airport Light Rail Station.

Evaluation Team

Name	Title / Role	Telephone	e-mail
	Committee Member		

Scoring

Attribute	Weight Factor	Raw Score	Weighted Score
Mobility/Connectivity	23.8%		0.00
Community Support	9.5%		0.00
Right of Way Impacts	23.8%		0.00
Accessibility	23.8%	5	1.19
Pedestrian Volume	14.3%	5	0.71
Funding	4.8%	5	0.24
		TOTAL	2.14

PROJECT INFORMATION

Site 2 - 32nd Ave S from S 200th St to S 204th St

Project Description

This project is identified in the 2015 SeaTac Transportation Master Plan as Public Works Capital Improvement Project ST-136. Project consists of constructing new sidewalk, traffic calming measures, and sharrows (shared vehicular/bicycle lane).

Potential to include undergrounding overhead utilities, landscaping, storm drainage infrastructure, and pedestrian lighting. Right-of-way may be required to build out 60-ft street section.

Project Purpose and Need

Existing sidewalk is present on the west side of 32nd Ave S. Project would build sidewalks on east side of 32nd Ave S to serve the adjacent neighborhood. Project would add sidewalks along identified safe route to school for Madrona Elementary.

Evaluation Team

Name	Title / Role	Telephone	e-mail
	Committee Member		

Scoring

Attribute	Weight Factor	Raw Score	Weighted Score
Mobility/Connectivity	23.8%		0.00
Community Support	9.5%		0.00
Right of Way Impacts	23.8%		0.00
Accessibility	23.8%	5	1.19
Pedestrian Volume	14.3%	5	0.71
Funding	4.8%	1	0.05
		TOTAL	1.95

PROJECT INFORMATION

Site 3 - S 144th St, Military Rd S to 24th Ave S

Project Description

This project is identified in the 2015 SeaTac Transportation Master Plan as Public Works Capital Improvement Project ST-079. Project consists of reconstructing roadway to collector arterial standards, new concrete curb, gutter and sidewalk, bicycle lanes, storm drainage infrastructure, landscaping, street lighting, channelization, paving, and undergrounding of overhead utililites.

Potential to include undergrounding overhead utilities, landscaping, storm drainage infrastructure, and pedestrian lighting. Right-of-way may be required to build out 60-ft street section.

Project Purpose and Need

Dedicated pedestrian facilities along S 144th St do not exist along this segment. This collector arterial links the Riverton Heights Neighborhood to transit on 24th Ave S and Military Rd S. It also provides access to Foster High School in Tukwila.

Evaluation Team

Name	Title / Role	Telephone	e-mail
	Committee Member		

Scoring

Attribute	Weight Factor	Raw Score	Weighted Score
Mobility/Connectivity	23.8%		0.00
Community Support	9.5%		0.00
Right of Way Impacts	23.8%		0.00
Accessibility	23.8%	3	0.71
Pedestrian Volume	14.3%	5	0.71
Funding	4.8%	1	0.05
		TOTAL	1.48

PROJECT INFORMATION

Site 4 - S 198th St from 32nd Ave to Military Rd S

Project Description

This project is identified in the 2015 SeaTac Transportation Master Plan as Public Works Capital Improvement Project ST-N35. Project consists of constructing a new pedestrian facility (sidewalk or shared use path) and sharrows (shared vehicular/bicycle lane).

Potential to include undergrounding overhead utilities, landscaping, storm drainage infrastructure, and pedestrian lighting. Right-of-way may be required to build out 60-ft street section.

Project Purpose and Need

Dedicated pedestrian facilities along S 198th St and 32nd Ave S do not exist along this segment. This local road links the neighborhood to transit on S 200th St and International Blvd. This road also acts as an alternative route for traffic to avoid the signalized intersection at Military Rd S and S 200th St.

Evaluation Team

Name	Title / Role	Telephone	e-mail
	Committee Member		

Scoring

Attribute	Weight Factor	Raw Score	Weighted Score
Mobility/Connectivity	23.8%		0.00
Community Support	9.5%		0.00
Right of Way Impacts	23.8%		0.00
Accessibility	23.8%	3	0.71
Pedestrian Volume	14.3%	3	0.43
Funding	4.8%	1	0.05
		TOTAL	1.19

PROJECT INFORMATION

Site 5 - S 142nd St, 24th Ave S to 29th Ave S

Project Description

This project is identified in the 2015 SeaTac Transportation Master Plan as Public Works Capital Improvement Project ST-N7. Project consists of constructing new shared vehicular/bicycle lane.

Potential to include undergrounding overhead utilities, landscaping, storm drainage infrastructure, and pedestrian lighting. Right-of-way may be required to build out 60-ft street section.

Project Purpose and Need

Dedicated pedestrian facilities along S 142nd St do not exist along this segment with the exception of sidewalk in front of the newly constructed Glacier Middle School. This local road links the a portion of the Riverton Heights Neighborhood and Glacier Middle School to transit on 24th Ave S. The proposed project would increase scope to build sidewalk along both sides of S 142nd St and provide a safe connection from 24th Ave S to Glacier Middle School.

Evaluation Team

Name	Title / Role	Telephone	e-mail
	Committee Member		

Scoring

Attribute	Weight Factor	Raw Score	Weighted Score
Mobility/Connectivity	23.8%		0.00
Community Support	9.5%		0.00
Right of Way Impacts	23.8%		0.00
Accessibility	23.8%	3	0.71
Pedestrian Volume	14.3%	5	0.71
Funding	4.8%	3	0.14
		TOTAL	1.57

32nd Ave S, S 170th St to S 176th St

City of SeaTac, Washington



Legend

Street Centerlines

- SeaTac - Arterial (Pri)
- SeaTac - Arterial (Mli)
- SeaTac - Collector
- SeaTac - Local
- Private - Local
- Private, Driveway
- Other - Freeway
- Other - Local

Pedestrian Network

Driveway

Map Description

Candidate for 2019 Sidewalk Committee Project Selection



Prepared by the City of SeaTac GIS. All rights reserved. This product has been compiled from the best available data. No warranty is expressed or implied as to accuracy, completeness, or fitness for any specific use. Not to be used for purposes of legal description or definition. Not a substitute for a professional survey.



Map Author: FMC
 City of Burien, City of SeaTac, County of King, Bureau of Land Management, Esri, HERE, Garmin, INCREMENT P,
 Map Generated: Thursday, November 14, 2019

UNOFFICIAL

32nd Ave S, S 200th St to S 204th St

City of SeaTac, Washington



Legend

Street Centerlines

Street Centerlines

SeaTac - Local

Private, Driveway

Other - Freeway

Pedestrian Network

Curb Ramps

●

Crosswalks

— Marked

— Unmarked

Pedestrian Network

— Driveway

Map Description

Candidate for 2019 Sidewalk Committee Project Selection

0 500 1000

ft

Map Author: FMC

City of Des Moines, WA, City of SeaTac, County of King, Bureau of Land Management, Esri, HERE, Garmin,

Map Generated: Thursday, November 14, 2019

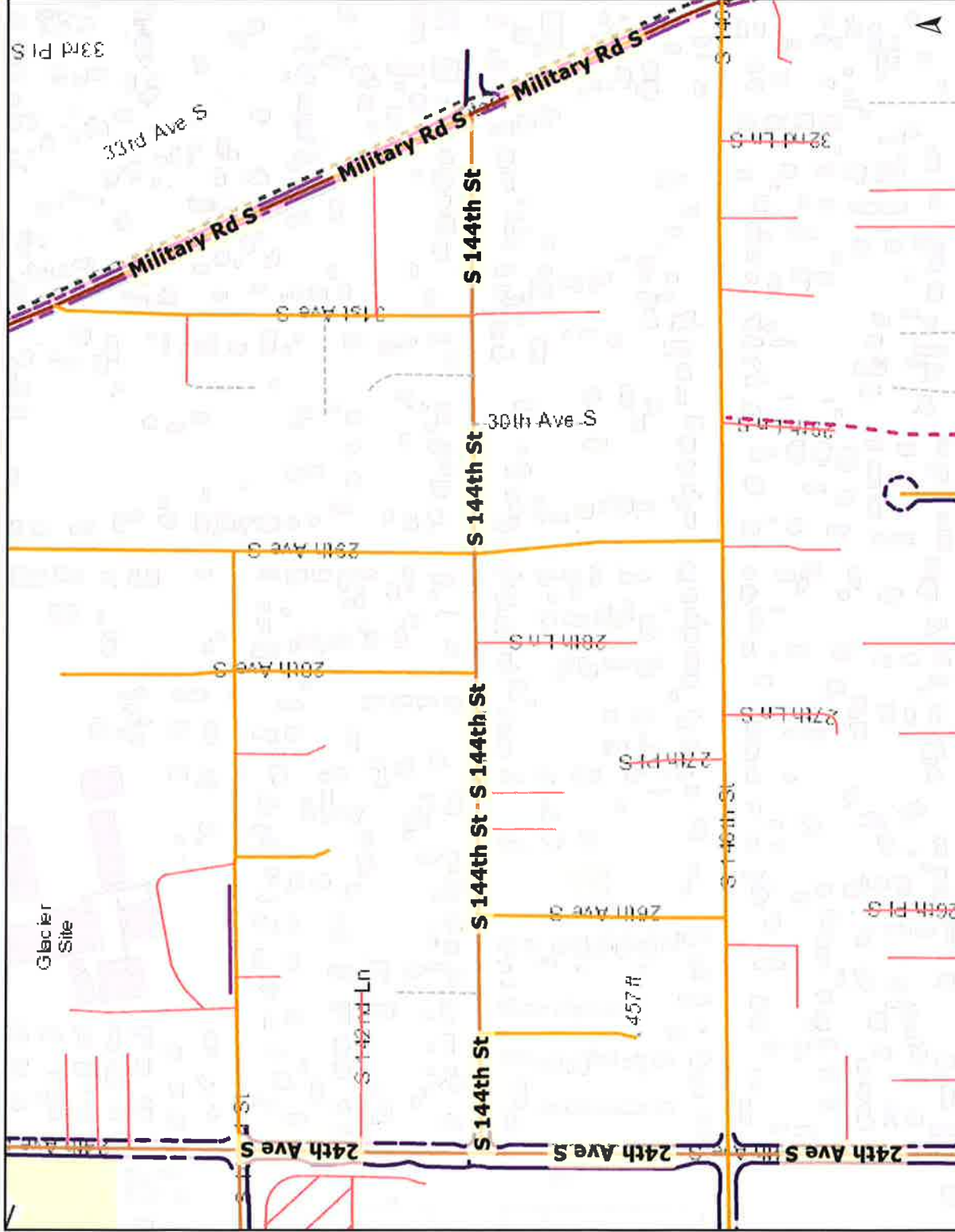
Prepared by the City of SeaTac GIS. All rights reserved. This product has been compiled from the best available data. No warranty is expressed or implied as to accuracy, completeness, or fitness for any specific use. Not to be used for purposes of legal description or definition. Not a substitute for a professional survey.



UNOFFICIAL


S 144th St, 24th Ave S to Military Rd S

City of SeaTac, Washington






Legend

Street Centerlines

-  SeaTac - Arterial (Minor)
-  SeaTac - Collector
-  SeaTac - Local
-  Private - Local
-  Private, Driveway
-  Other - Local

Pedestrian Network

-  Driveway
-  Driveway at Grade
-  Separated Walkway

Map Description

Candidate for 2019 Sidewalk Committee Project Selection



Prepared by the City of SeaTac GIS. All rights reserved. This product has been compiled from the best available data. No warranty is expressed or implied as to accuracy, completeness, or fitness for any specific use. Not to be used for purposes of legal description or definition. Not a substitute for a professional survey.

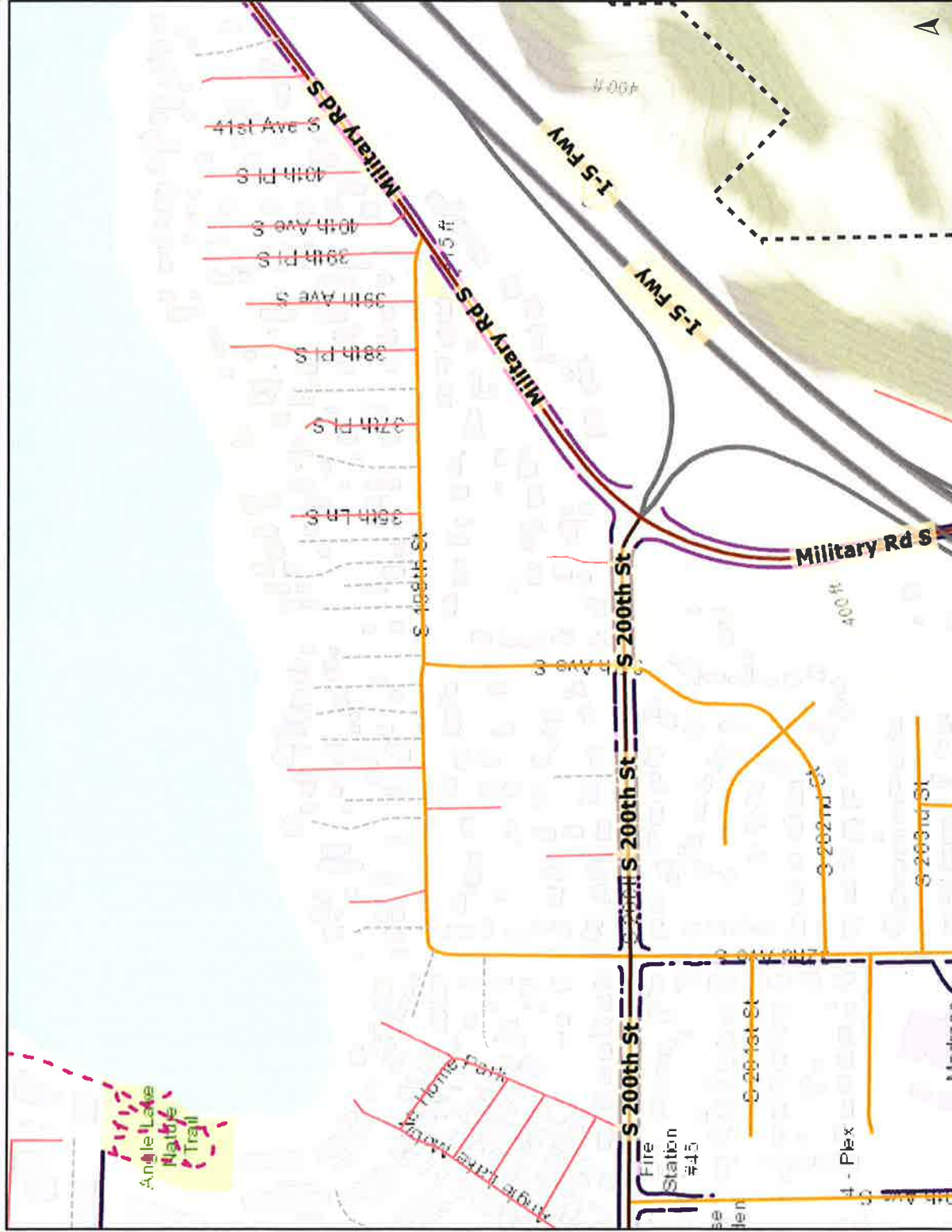


Map Author: FMC
 City of Burien, City of SeaTac, County of King, Bureau of Land Management, Esri, HERE, Garmin, INCREMENT P,
 Map Generated: Thursday, November 14, 2019

UNOFFICIAL

S 198th St, 32nd Ave S to Military Rd S

City of SeaTac, Washington



Legend

Street Centerlines

Street Centerlines

- SeaTac - Arterial (Principal)
- SeaTac - Arterial (Minor)
- SeaTac - Local
- Private - Local
- Private, Driveway
- Other - Freeway

Pedestrian Network

Pedestrian Network

- Driveway
- Driveway at Grade
- Separated Walkway

Map Description

Candidate for 2019 Sidewalk Committee Project Selection



Map Author: FMC
 City of SeaTac, County of King, Bureau of Land Management, Esri, Canada, Esri, HERE, Garmin, INCREMENT P, Intermap, USGS,
 Map Generated: Thursday, November 14, 2019

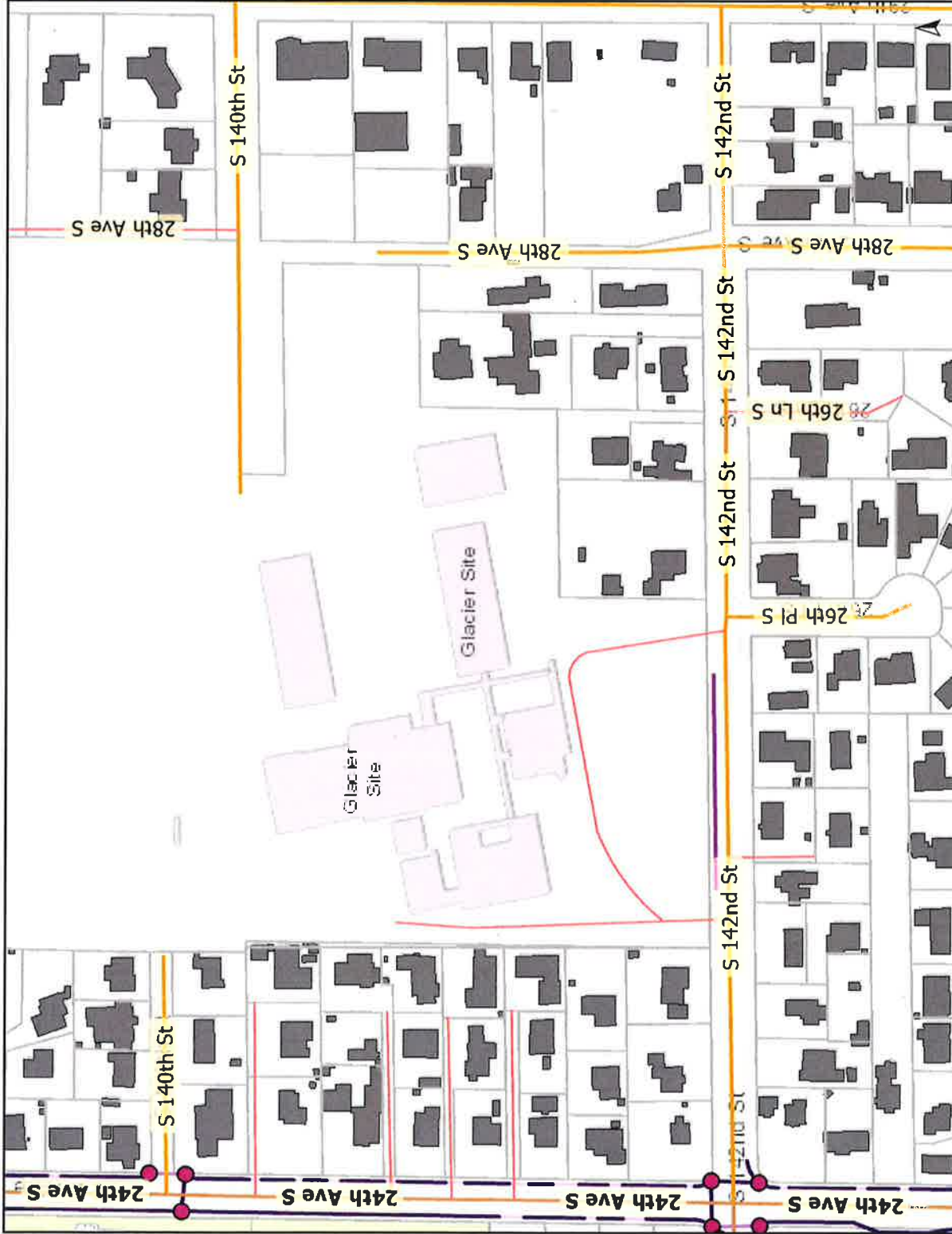
Prepared by the City of SeaTac GIS. All rights reserved. This product has been compiled from the best available data. No warranty is expressed or implied as to accuracy, completeness, or fitness for any specific use. Not to be used for purposes of legal description or definition. Not a substitute for a professional survey.



UNOFFICIAL

S 142nd St, 24th Ave S to 29th Ave S

City of SeaTac, Washington



Legend

Street Centerlines

Street Centerlines

SeaTac - Collector

SeaTac - Local

Private - Local

Pedestrian Network

Curb Ramps



Crosswalks

Marked

Unmarked

Pedestrian Network

Driveway

Map Description

Candidate for 2019 Sidewalk Committee Project Selection



Map Author: FMC
 City of Burien, City of SeaTac, County of King, Bureau of Land Management, Esri, HERE, Garmin, INCREMENT P,
 Map Generated: Thursday, November 14, 2019

Prepared by the City of SeaTac GIS. All rights reserved. This product has been compiled from the best available data. No warranty is expressed or implied as to accuracy, completeness, or fitness for any specific use. Not to be used for purposes of legal description or definition. Not a substitute for a professional survey.



UNOFFICIAL

Florendo's Example pg 1

PROJECT INFORMATION			
Site 1 - 32nd Ave S from S 170th St to S 176th St			
Project Description			
<p>This project is identified in the 2015 SeaTac Transportation Master Plan as Public Works Capital Improvement Project ST-141. Project consists of reconstructing roadway, constructing storm drainage infrastructure, concrete curb, gutter, and sidewalk, and sharrows (shared vehicular/bicycle lanes).</p> <p>Potential to include undergrounding overhead utilities, landscaping, and pedestrian lighting. Right-of-way required to build out 60-ft street section.</p>			
Project Purpose and Need			
<p>Dedicated pedestrian facilities along 32nd Ave S do not exist along this segment. This local road links a high density residential area (3 King County Housing Authority housing complexes along with single family residences) to transit services on S 170th St, S 176th St, and International Blvd. Able to leverage \$500K from Sound Transit Access System grant to help fund this project because it provides safe access to the Airport Light Rail Station.</p>			
Evaluation Team			
Name	Title / Role	Telephone	e-mail
Florendo	City Engineer/Staff	206.973.4740	fcabudol@seatacwa.gov
Scoring			
Attribute	Weight Factor	Raw Score	Weighted Score
Mobility/Connectivity	23.8%	5	1.19
Community Support	9.5%	3	0.29
Right of Way Impacts	23.8%	1	0.24
Accessibility	23.8%	5	1.19
Pedestrian Volume	14.3%	5	0.71
Funding	4.8%	5	0.24
		TOTAL	3.86

Florendo's Example, Pg 2

PROJECT INFORMATION			
Site 2 - 32nd Ave S from S 200th St to S 204th St			
Project Description			
<p>This project is identified in the 2015 SeaTac Transportation Master Plan as Public Works Capital Improvement Project ST-136. Project consists of constructing new sidewalk, traffic calming measures, and sharrows (shared vehicular/bicycle lane).</p> <p>Potential to include undergrounding overhead utilities, landscaping, storm drainage infrastructure, and pedestrian lighting. Right-of-way may be required to build out 60-ft street section.</p>			
Project Purpose and Need			
<p>Existing sidewalk is present on the west side of 32nd Ave S. Project would build sidewalks on east side of 32nd Ave S to serve the adjacent neighborhood. Project would add sidewalks along identified safe route to school for Madrona Elementary.</p>			
Evaluation Team			
Name	Title / Role	Telephone	e-mail
Florendo	City Engineer/Staff	206.973.4740	fcabudol@seatacwa.gov
Scoring			
Attribute	Weight Factor	Raw Score	Weighted Score
Mobility/Connectivity	23.8%	3	0.71
Community Support	9.5%	3	0.29
Right of Way Impacts	23.8%	3	0.71
Accessibility	23.8%	5	1.19
Pedestrian Volume	14.3%	5	0.71
Funding	4.8%	1	0.05
		TOTAL	3.67

Florendo's Example, Pg 3

PROJECT INFORMATION			
Site 3 - S 144th St, Military Rd S to 24th Ave S			
Project Description			
<p>This project is identified in the 2015 SeaTac Transportation Master Plan as Public Works Capital Improvement Project ST-079. Project consists of reconstructing roadway to collector arterial standards, new concrete curb, gutter and sidewalk, bicycle lanes, storm drainage infrastructure, landscaping, street lighting, channelization, paving, and undergrounding of overhead utilities.</p> <p>Potential to include undergrounding overhead utilities, landscaping, storm drainage infrastructure, and pedestrian lighting. Right-of-way may be required to build out 60-ft street section.</p>			
Project Purpose and Need			
<p>Dedicated pedestrian facilities along S 144th St do not exist along this segment. This collector arterial links the Riverton Heights Neighborhood to transit on 24th Ave S and Military Rd S. It also provides access to Foster High School in Tukwila.</p>			
Evaluation Team			
Name	Title / Role	Telephone	e-mail
Florendo	City Engineer/Staff	206.973.4740	fcabudol@seatacwa.gov
Scoring			
Attribute	Weight Factor	Raw Score	Weighted Score
Mobility/Connectivity	23.8%	3	0.71
Community Support	9.5%	1	0.10
Right of Way Impacts	23.8%	3	0.71
Accessibility	23.8%	3	0.71
Pedestrian Volume	14.3%	5	0.71
Funding	4.8%	1	0.05
		TOTAL	3.00

Florendo's Example, Pg 4

PROJECT INFORMATION			
Site 4 - S 198th St from 32nd Ave to Military Rd S			
Project Description			
<p>This project is identified in the 2015 SeaTac Transportation Master Plan as Public Works Capital Improvement Project ST-N35. Project consists of constructing a new pedestrian facility (sidewalk or shared use path) and sharrows (shared vehicular/bicycle lane).</p> <p>Potential to include undergrounding overhead utilities, landscaping, storm drainage infrastructure, and pedestrian lighting. Right-of-way may be required to build out 60-ft street section.</p>			
Project Purpose and Need			
<p>Dedicated pedestrian facilities along S 198th St and 32nd Ave S do not exist along this segment. This local road links the neighborhood to transit on S 200th St and International Blvd. This road also acts as an alternative route for traffic to avoid the signalized intersection at Military Rd S and S 200th St.</p>			
Evaluation Team			
Name	Title / Role	Telephone	e-mail
Florendo	City Engineer/Staff	206.973.4740	fcabudol@seatacwa.gov
Scoring			
Attribute	Weight Factor	Raw Score	Weighted Score
Mobility/Connectivity	23.8%	3	0.71
Community Support	9.5%	3	0.29
Right of Way Impacts	23.8%	1	0.24
Accessibility	23.8%	3	0.71
Pedestrian Volume	14.3%	3	0.43
Funding	4.8%	1	0.05
		TOTAL	2.43

Florendo's Example, Pg 5

PROJECT INFORMATION			
Site 5 - S 142nd St, 24th Ave S to 29th Ave S			
Project Description			
<p>This project is identified in the 2015 SeaTac Transportation Master Plan as Public Works Capital Improvement Project ST-N7. Project consists of constructing new shared vehicular/bicycle lane.</p> <p>Potential to include undergrounding overhead utilities, landscaping, storm drainage infrastructure, and pedestrian lighting. Right-of-way may be required to build out 60-ft street section.</p>			
Project Purpose and Need			
<p>Dedicated pedestrian facilities along S 142nd St do not exist along this segment with the exception of sidewalk in front of the newly constructed Glacier Middle School. This local road links the a portion of the Riverton Heights Neighborhood and Glacier Middle School to transit on 24th Ave S. The proposed project would increase scope to build sidewalk along both sides of S 142nd St and provide a safe connection from 24th Ave S to Glacier Middle School.</p>			
Evaluation Team			
Name	Title / Role	Telephone	e-mail
Florendo	City Engineer/Staff	206.973.4740	fcabudol@seatacwa.gov
Scoring			
Attribute	Weight Factor	Raw Score	Weighted Score
Mobility/Connectivity	23.8%	3	0.71
Community Support	9.5%	3	0.29
Right of Way Impacts	23.8%	3	0.71
Accessibility	23.8%	3	0.71
Pedestrian Volume	14.3%	5	0.71
Funding	4.8%	3	0.14
TOTAL			3.29