



# NEW VALLEY ELEMENTARY SCHOOL

## PARKS + RECREATIONS COMMITTEE

SEPTEMBER 5, 2019





# SITE PLAN

original proposal  
7.8.2019



MANHOLE FOR FUTURE DEVELOPMENT

UNDERGROUND DETENTION SYSTEM

NEW VALLEY ELEMENTARY SCHOOL

STORMWATER

EXISTING STORMWATER

MILITARY RD S

15

S 228TH ST

GRANDVIEW OFF-LEASH DOG PARK

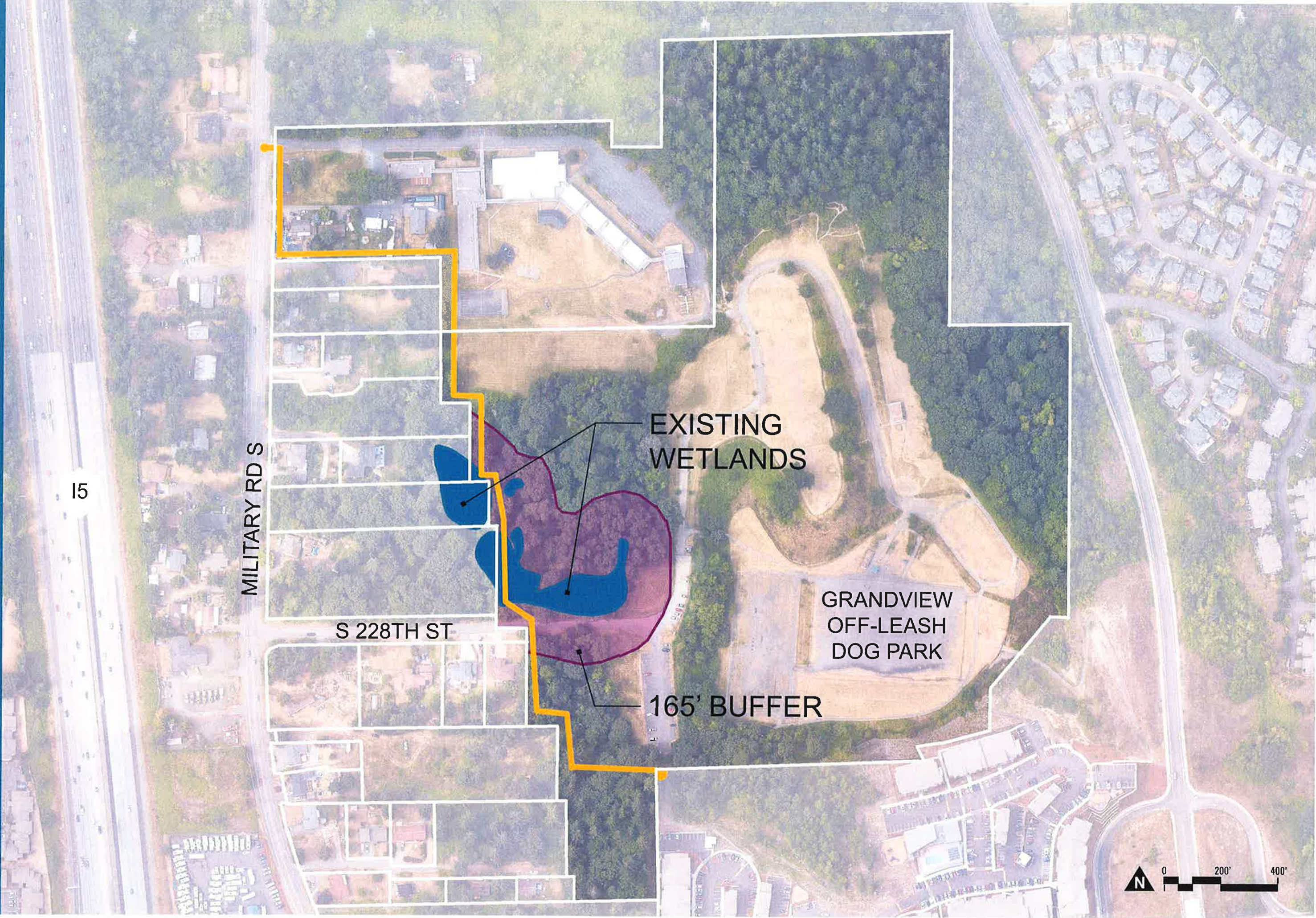
SEWER

SEWER TO CONNECT TO EXISTING MANHOLE FOR FUTURE DEVELOPMENT





# EXISTING WETLANDS



15

MILITARY RD S

S 228TH ST

EXISTING WETLANDS

GRANDVIEW OFF-LEASH DOG PARK

165' BUFFER





# SITE PLAN

revised proposal  
9.5.2019

- *Impacts to wildlife*
- *Removal of trees*
- *Parking lot and road impacts*

15

MILITARY RD S

S 228TH ST

MANHOLE FOR FUTURE DEVELOPMENT

NEW VALLEY ELEMENTARY SCHOOL

UNDERGROUND DETENTION SYSTEM

EXISTING WETLANDS

SEWER

SEWER TO CONNECT TO EXISTING MANHOLE FOR FUTURE DEVELOPMENT

STORMWATER

EXISTING STORMWATER

GRANDVIEW OFF-LEASH DOG PARK

