



Parks, Community Programs and Services

2019 Community Leadership Academy

Director Lawrence Ellis, Facilities Manager Brian Ruda,
Parks Projects and Operations Manager Michael Fitzpatrick,
Recreation Manager Brian Tomisser





- 1 Brief History
- 2 Recreation
- 3 Human Services
- 4 Park Maintenance
- 5 Facility Maintenance
- 6 Future Projects

Citizens

City Council

City Manager

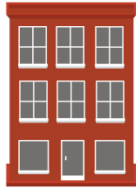
Contract Services
Public Safety



Fire



Police



Community & Economic
Development



Municipal Court



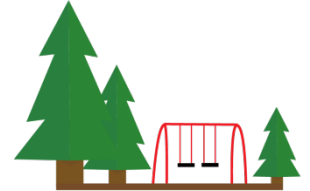
Human
Resources



Public Works



Legal



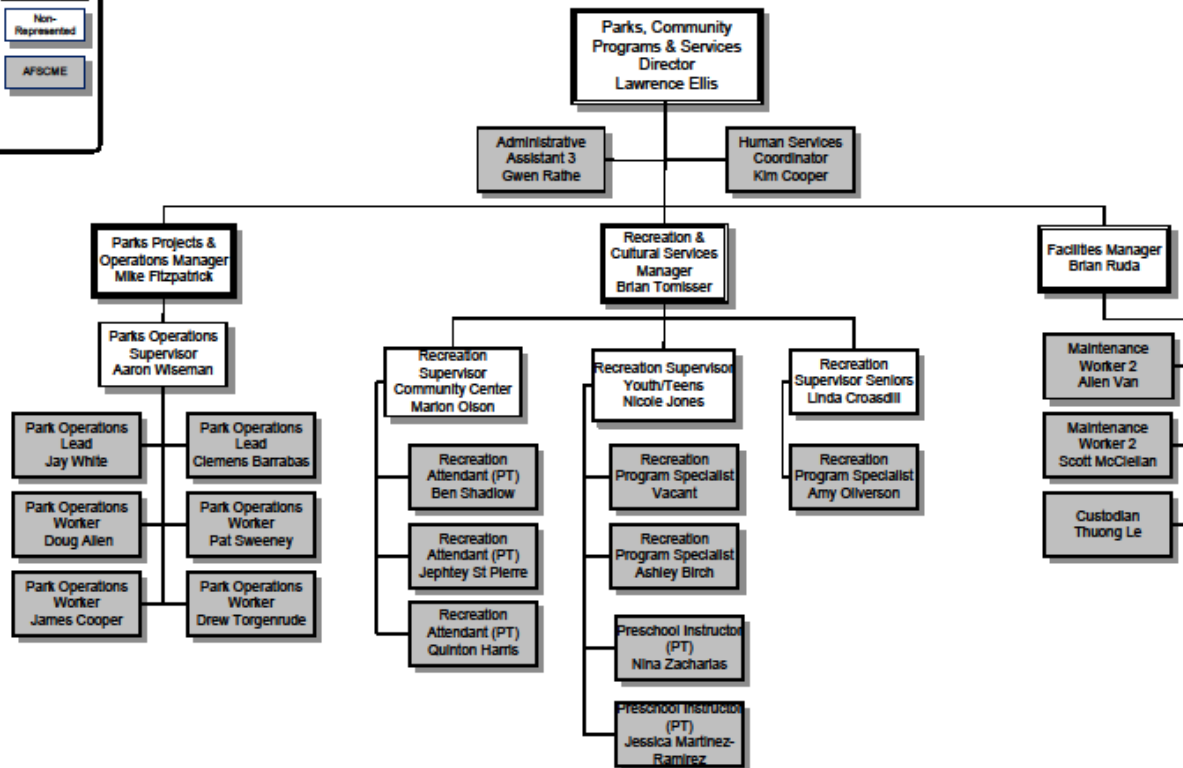
Parks, Community
Programs and
Services



Finance
and Systems



City of SeaTac Parks, Community Programs & Services Department 2019 Organization Chart



History



- City incorporated in 1990
- Only 3 recreation programs available to citizens in 1990
- Maintenance from King County Parks to City of SeaTac Parks 1990-1993
- SeaTac Community Center opened in March 1993
- North SeaTac Park ball fields opened in 1996

Achievements



- Offer over 100 recreation programs annually
- Over 10,000 people have attended our special events annually
- Renovated and improved all City Parks
- Average 12,000 meals and 14,000 Meals on Wheels delivered to seniors annually
- We offer Recreation Scholarships for citizens who need financial assistance



Recreation

Park
Maintenance

Facilities

Human
Services



Recreation Programs



Community Center Programs

- SeaTac United Soccer
- Archery
- Hula
- Badminton/Pickleball
- Belly Dancing
- Zumba
- Facility Rentals
- Piano Lessons
- Yoga
- Fitness Room
- Total Body Fitness
- Fencing
- Senior Walking Program
- Drop in Chess
- Bouldering

Special Events and Cultural Arts

- Music in the Park
- Theater in the Park
- Art/Photo Exhibits
- Kids Fest
- Link the World
- Holiday Bazaar
- Christmas Tree Lighting
- Touch a Truck
- Community Kitchen Nights



Senior Programs



Senior Programs

- SeaTac Senior Café
- Meals on Wheels
- Drop in Activities
- Field Trips
- Casino Trips
- Drivers Safety Course
- Minor Home Repair
- Crafts, Coffee & Conversation
- Seniors Working Out
- Stress Management
- Support Groups
- Information Sessions
- Fraud Awareness

Youth/Teen Programs

- Preschool
- Young Adult Socials
- Summer & Break Camps for Youth and Teens





Youth/Teen Programs!

- Home School PE
- Teen Center
- Teen Camps
- Chess 4 Life
- Before & After School Care



Questions you have to ask before starting a program

- Does it make money or serve City of SeaTac residents?
- Who is your target audience?
- Who else offers the program?
- Who is going to staff the program?
- Where will it be located?

Questions you have to ask before starting a program

- How much should we charge?
- How do we recruit/advertise this program?
- How do we establish fees?
- What are the projected expenditures?
- What is the projected revenue?



Recreation

Park
Maintenance

Facilities

Human
Services



City's Role in Human Services

Human Services Programs are essential to the growth and vitality of the SeaTac community. By investing in the delivery of these services to SeaTac residents, the City of SeaTac is working to promote building a healthy, vibrant community.

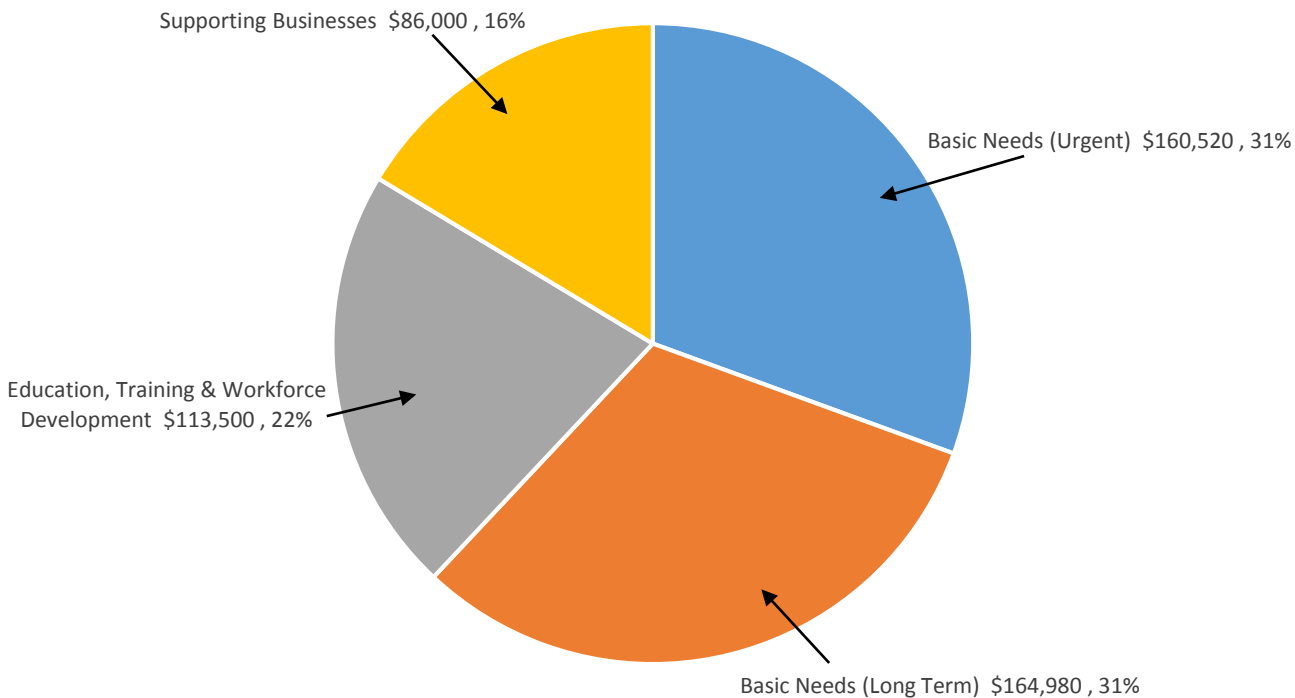


Guiding Principles

- Healthy Communities
- Self Reliance
- Collaborations
- Equal Access
- Respect and Dignity
- Accountability



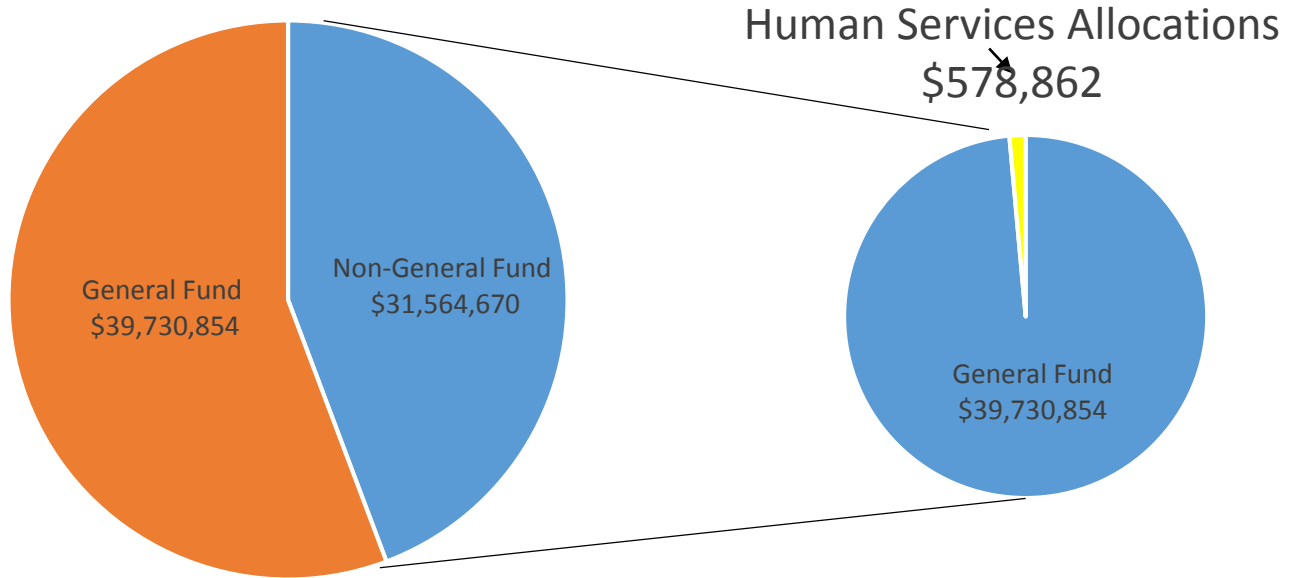
Direct Human Services



■ Basic Needs (Urgent) ■ Basic Needs (Long Term) ■ Education, Training & Workforce Development ■ Supporting Businesses

Direct Human Services

Human Services contracts are a small part of SeaTac's budget.





Recreation

Park
Maintenance

Facilities

Human
Services



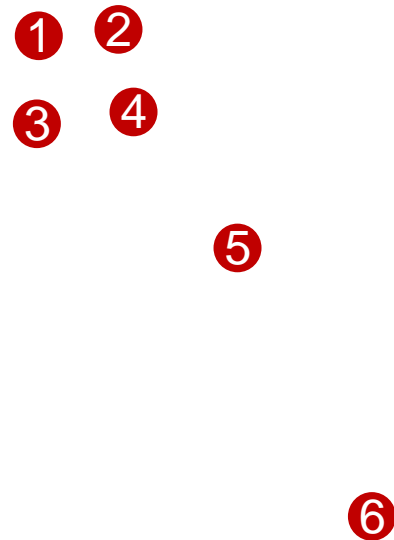
Annual Park Maintenance Budget

- \$1.8 million
- 350 total acres maintained
- 150 acres highly maintained
- 6 fulltime staff
- 9 seasonal positions
- Department staffed 7 days/week
- 16 acres per employee



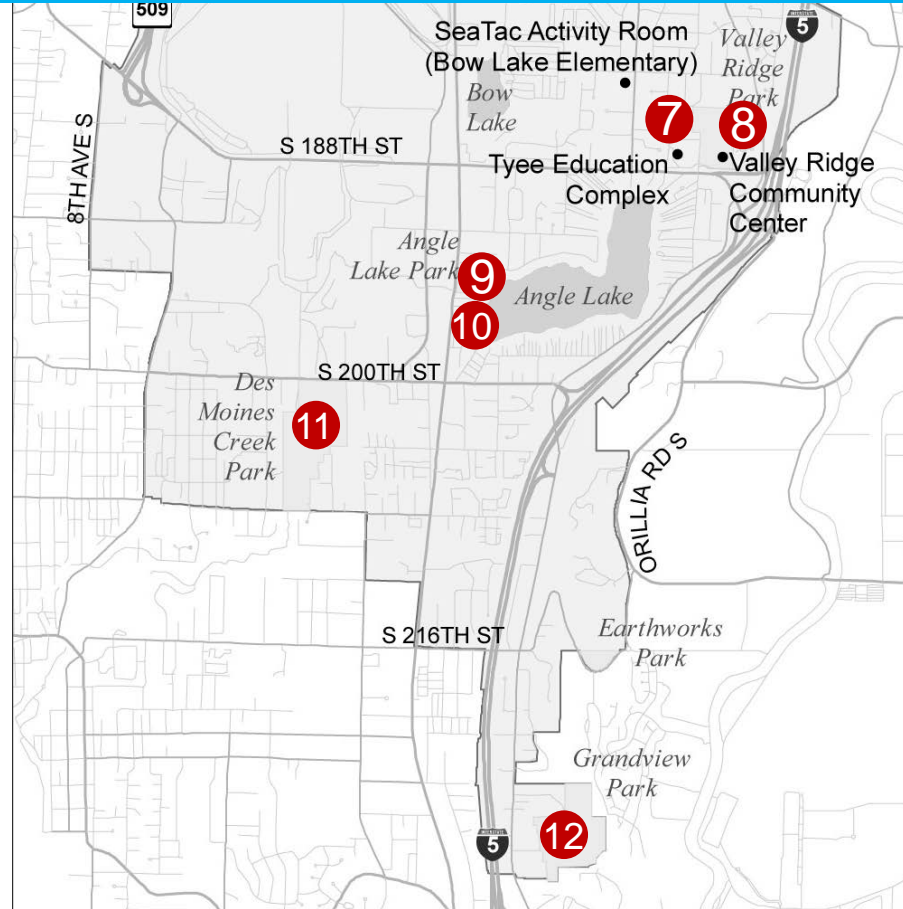
North End Parks

- ① North SeaTac Park
- ② SeaTac Community Center
- ③ Sunset Park
- ④ Highline SeaTac Botanical Garden
- ⑤ Riverton Heights Park
- ⑥ McMicken Heights Park



South End Parks

- 7 Valley Ridge Park
- 8 Valley Ridge Community Center
- 9 Angle Lake Park
- 10 Angle Lake Nature Trail
- 11 Des Moines Creek Park/Trail
- 12 Grandview Park



Essential Job Functions

- Opening Parks
- Landscape Maintenance
- Sport Field Preparations
- Support Special Events





Recreation

Park
Maintenance

Facilities

Human
Services



Essential Job Functions

- General Maintenance (Plumbing, Electrical, Carpentry)
- Inspect, maintain and troubleshoot a variety of systems (HVAC, Electrical, Emergency Generators)
- Project Management
- Monitor the Work of Contractors



SeaTac City Hall

Janitorial	\$90,176
Electricity	\$121,520
Water	\$10,592
Sewer	\$4,392
Repair & Maint	\$90,894



SeaTac Community Center

Janitorial	\$43,120
Electricity	\$26,327
Water	\$3,580
Sewer	\$3,752
Repair & Maint	\$44,590
Gas	\$11,314



SeaTac Maintenance Facility

Janitorial	\$11,454
Electricity	\$24,579
Water	\$5,152
Sewer	\$2,425
Repair & Maint	\$21,637
Gas	\$4,902



Current Projects

Veteran's Memorial



- Location is at between the SeaTac Community Center and Senior Center
- Ribbon Cutting is scheduled for 2019 Veteran's Day
- Fundraising events for purchasing memorial bricks

Neighborhood Park at Riverton Phase 2

- Phase 1 completed in 2017
- Design will start in 2019
- 100% Funding from Community Development Block Grant
- Project to be completed by June 2020
- Will adopt Master Plan for future planning





North SeaTac Park Projects

Synthetic Turf Replacement New Lighting System

- Funding for both projects are scheduled for 2019 & 2020 C.I.P.
- Funding source is from Real Estate Excise Tax (R.E.E.T.)
- Projects should be completed in 2020

Parks, Recreation & Open Space Plan (PROS Plan)



What is the PROS Plan?

The PROS Plan is the framework for future park developments of parks, community programs, and human services and serves as a companion document to the SeaTac Comprehensive Plan.

The plan sets the City priorities and implementation strategy.



Next Steps:

1. Continue to develop and enhance parks
2. Continue to secure grants and other funding sources
3. Continue to be Trendsetters
4. Continue to Increase Revenue and Lessen Expenditures
5. Continue to be a Full Service Department



Timeline to Create a Park

Concept of the Park Idea	6-12 months
Input from comprehensive plan or Master Plan	6-12 months
Solicit funding via Capital Improvement Plan and/or Grant funding source	6-12 months
Selection of Design Team (request for proposal, interviews, award of contract)	7-9 weeks
Design phase (public meeting, internal design review with engineers, police, fire, planning)	2-5 months
Prepare Invitation to Bid Packet	2 weeks



Timeline to Create a Park

Go out for Construction Bids	2-4 weeks
Review of Construction Bids (award of the bid, council approval)	1-2 weeks
Notice to proceed	1-2 weeks
Construction	7-10 months
Final Acceptance (punch list)	2 weeks
Release of Retainage (45 days after final acceptance)	



Q&A





Lets Create a Park!