

Citizens

City Council

City Manager

Contract Services
Public Safety



Fire



Police



Community & Economic
Development



Municipal Court



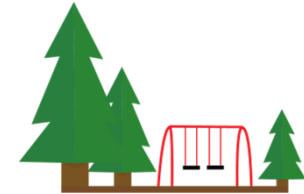
Human
Resources



Public Works



Legal



Parks, Community
Programs and
Services



Finance
and Systems

Public Works Department

2019 Community Leadership Academy

William Appleton, P.E.
Director of Public Works
www.ci.seatac.wa.us



- 1 Public Works Administration
- 2 Engineering Division
- 3 Engineering Review Division
- 4 Stormwater Compliance Division
- 5 Solid Waste Division
- 6 Maintenance and Operations Division

Engineering Division

2019 Community Leadership Academy

Florendo Cabudol, P.E.
City Engineer
www.ci.seatac.wa.us



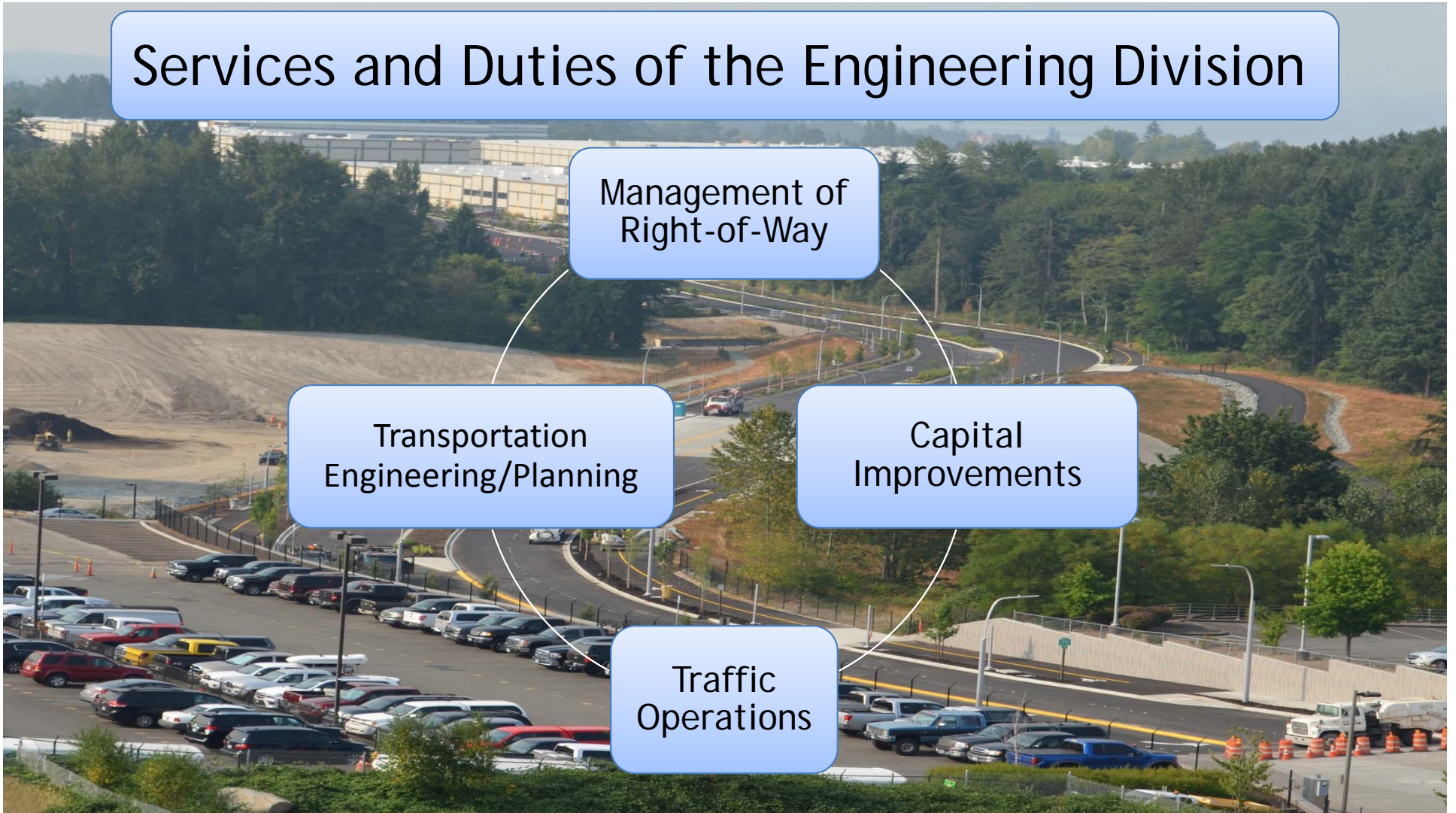
Services and Duties of the Engineering Division

Management of
Right-of-Way

Transportation
Engineering/Planning

Capital
Improvements

Traffic
Operations





Right-of-Way (ROW)

- ROW is the area owned and/or controlled by the City. ROW boundaries vary depending on location.
- Typically includes street surface, sidewalks, bike lanes, utilities, and landscaping up to the adjacent private property lines
- Public Works and Engineering is responsible for managing all modes of travel through ROW, including:
 - 79 centerline miles of paved streets
 - # feet of sidewalk
 - # ADA ramps
 - # curb cut driveways



Capital Improvements

Capital Improvement Projects (CIP)

- New Construction of streets, ROW amenities, and utilities
- Projects are identified through the Transportation Master Plan (TMP) and Surface Water Management Plan (SWMCIP)
- Transportation Improvement Plan (TIP) selects projects from TMP, prioritizes, and schedules projects throughout a 6-yr period. TIP is updated annually.
- Engineering is responsible for budgeting, scheduling, designing, constructing and inspecting each CIP



Managing Traffic through ROW

- Management and monitoring
 - # of traffic signals
 - # of traffic signs
 - # of pavement markings
- Address Traffic Calming concerns



Transportation Engineering/Planning

Engineering/Planning for demands on transportation network

- Transportation Master Plan (TMP) accessed here:
<http://www.seatacwa.gov/services/city-services/transportation-planning>
- Define goals, policies, and investments to prepare for future transportation demands
- Strategic planning for transportation network to sustain mobility for all modes

Engineering Review Division

2019 Community Leadership Academy

Ali Shasti, P.E.
Engineering Review Manager
www.ci.seatac.wa.us



Clearing, Grading,
Paving & Drainage
(STE)

Permit Application

(outside the ROW on
Private Property)

Site Engineering for:

- Residential Sites (SFR, SP or SUB)
- Commercial Sites (Hotels, Offices Retirement Homes)
- Industrial Sites (Warehouses and Manufacturing Facilities)

Site Engineering - Before



Site Engineering - After



Five Classes of Right-of-Way (ROW) Permit Applications Review and Approval

- Class A: Parades, Races, ..
- Class B: Temp. Sale of Goods, Temp. Signs, ..
- Class C: Open Cutting Streets, Driveway Connection, ..
- Class D: Franchise Utilities, PSE, Cable, ..
- Class E: Hauling Materials

Class C: Curb, Gutter and Sidewalk - Before



Class C: Curb, Gutter and Sidewalk - After



Stormwater Compliance Division

2019 Community Leadership Academy

Vacant
www.ci.seatac.wa.us



Background

Stormwater Infrastructure - is the collection of ditches, drainage pipes, storm drains, and detention and treatment facilities which convey water downstream to natural water ways.

City is responsible for maintenance, repair and replacement of approximately \$26 million in existing assets:

- Over 72 miles drainage pipe
- Approximately 4000 catch basins/storm drains
- 32 flow control and treatment facilities

Stormwater Programs

- Capital Improvements (PW Engineering)
- Stormwater Maintenance (PW Maintenance)
- Stormwater Inspections (PW Maint. and Stormwater)
- Asset Management (PW Stormwater)
- Illicit Discharge Detection and Elimination (PW Stormwater)
- Public Education and Outreach (PW Stormwater)

Stormwater Programs

Asset Management

Video assessment program designed to evaluate underground infrastructure to:

- Identify potential problems
- Schedule repair or replacements before storm system failures can occur

What We Are Trying to Avoid

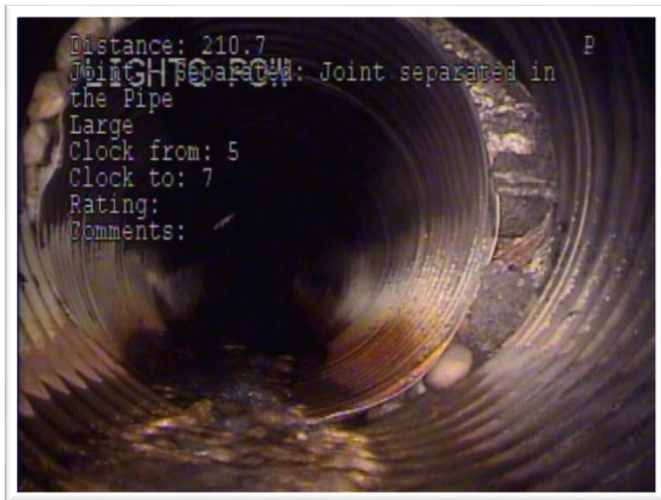


Sink Holes



Flooding

What We Are Finding

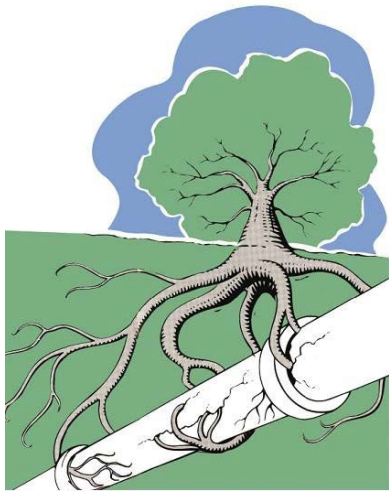


Pipe Separation



Erosion of Pipe

What We Are Finding



Root Penetration



Pipe Collapse

Stormwater Programs



Illicit Discharge Detection and Investigation Program

- Investigates stormwater quality complaints
- Traces discharges to the source
- Eliminates illicit discharges
 - Focuses on education/voluntary compliance
 - Enforcement when education fails (Fines \$\$\$)

What We Are Finding



Illegal Dumping

What We Are Finding



Leaking Fuel Systems

How You Can Help

If You See It - Report It

Call the Spill Hotline

Mon.-Fri 7 AM to 3:30 PM 206.973.4770

If materials are hazardous also call 911

Clearly indicate:

- Your name, the date, time and location
- The type of material and size of spill/discharge, or list indicators if material is unknown;
- Indicate responsible party, if known.



STORM

STORMWATER OUTREACH
 FOR REGIONAL MUNICIPALITIES



www.fixcarleaks.org



Solid Waste Division

2019 Community Leadership Academy

Mason Giem

Public Works Program Coordinator

mgiem@seatacwa.gov





Background

Solid Waste Contract Management - is the management of an agreement between the City and solid waste hauler, Recology CleanScapes. This contract determines:

- What collection services are provided
- The cost of the service
- What materials can be collected
- Educational outreach activities



Solid Waste Programs

- Bi-Annual Recycling Collection Event
- Go Green Event
- Community Clean up Events
- Community Presentations



The Recycling System is Changing

- China is no longer accepting recycling from the rest of the world
- All Recycling must be empty, clean and dry



The Recycling Events are Successful

At the spring 2019 event:

- 61% greater attendance
- Latex paint recycling added
- CFL recycling added



Operations & Maintenance Division

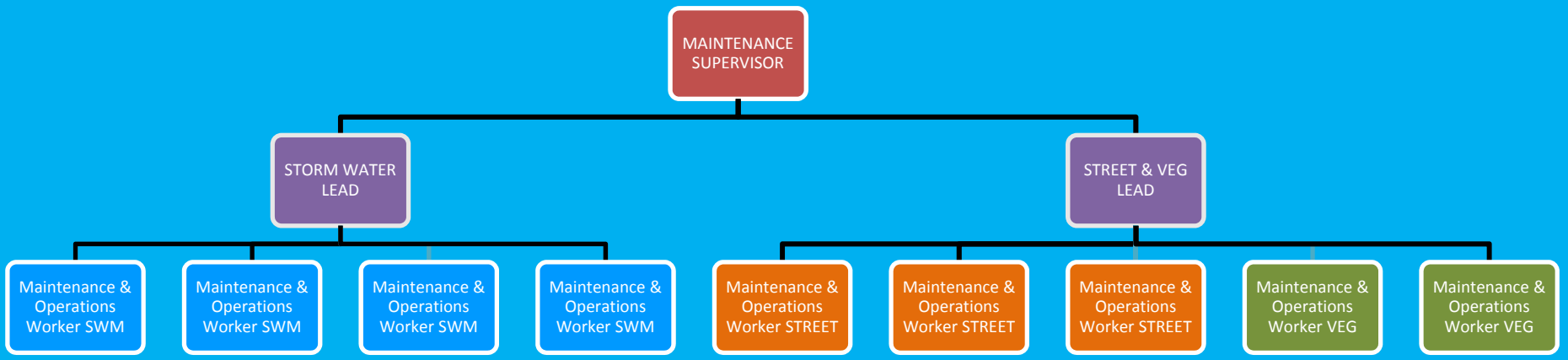
2019 Community Leadership Academy

Sean Clark
Operations & Maintenance Supervisor
www.ci.seatac.wa.us



PUBLIC WORKS MAINTENANCE







Public Works

Street Maintenance, Storm Water Maintenance,
Vegetation Maintenance and Fleet Administration

2019 Community Leadership Academy

Sean Clark
Maintenance Supervisor





Public Works

Maintenance, repair & installation of catch basins & manholes, pond maintenance, ditching and locates.

2019 Community Leadership Academy

Lau Siva
Storm Water Maintenance Lead





Public Works

Street Maintenance: Buttons, pot holes & crack sealing, shoulders, guard rails, street sweeping and winter operations. Tree pruning and removal, plant maintenance, mowing & edging, weed control and litter operations

2019 Community Leadership Academy

San Sar

Street/Vegetation Maintenance Lead



Public Works

Office customer service representative,
maintenance secretarial and accounting support.

New in 2018

Fleet asset accounting & administrator of fleet & fuel
software programs



2019 Community Leadership Academy

Barbara Mailo
Administrative II & Operations Technician



Asset Replacement Target

