
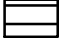



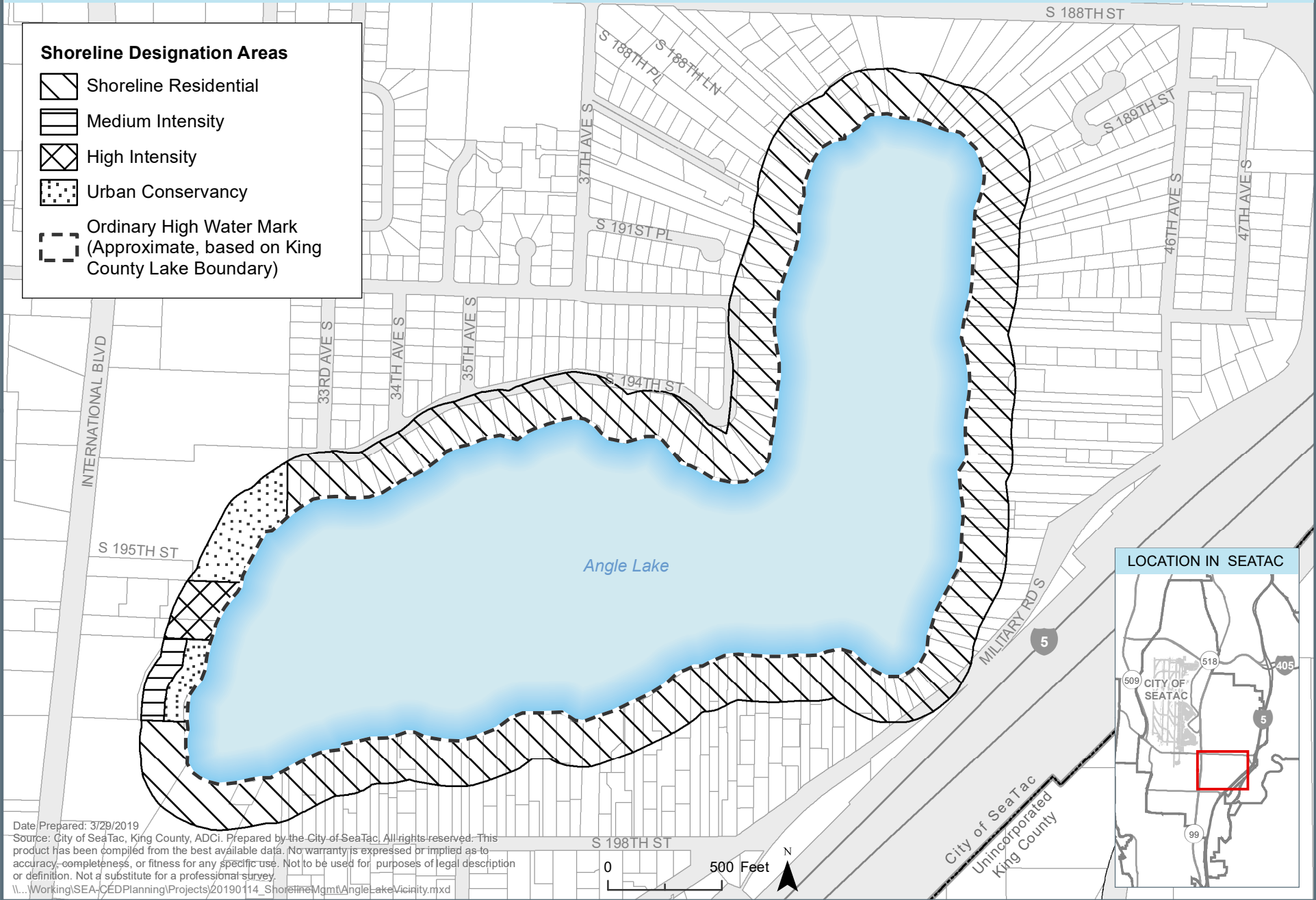


# Figure 1. Shoreline Environment Designation Map

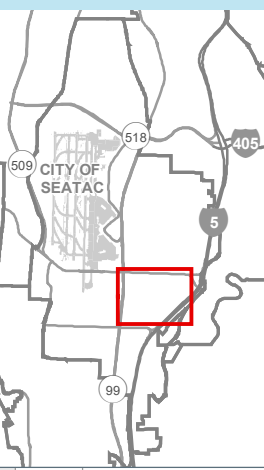


**Shoreline Designation Areas**

-  Shoreline Residential
-  Medium Intensity
-  High Intensity
-  Urban Conservancy
-  Ordinary High Water Mark (Approximate, based on King County Lake Boundary)



**LOCATION IN SEATAC**



Date Prepared: 3/29/2019  
 Source: City of SeaTac, King County, ADCI. Prepared by the City of SeaTac. All rights reserved. This product has been compiled from the best available data. No warranty is expressed or implied as to accuracy, completeness, or fitness for any specific use. Not to be used for purposes of legal description or definition. Not a substitute for a professional survey.  
 \\...Working\SEA-CED\Planning\Projects\20190114\_ShorelineMgmt\AngleLakeVicinity.mxd

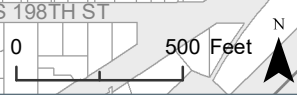
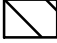
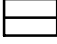
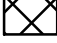


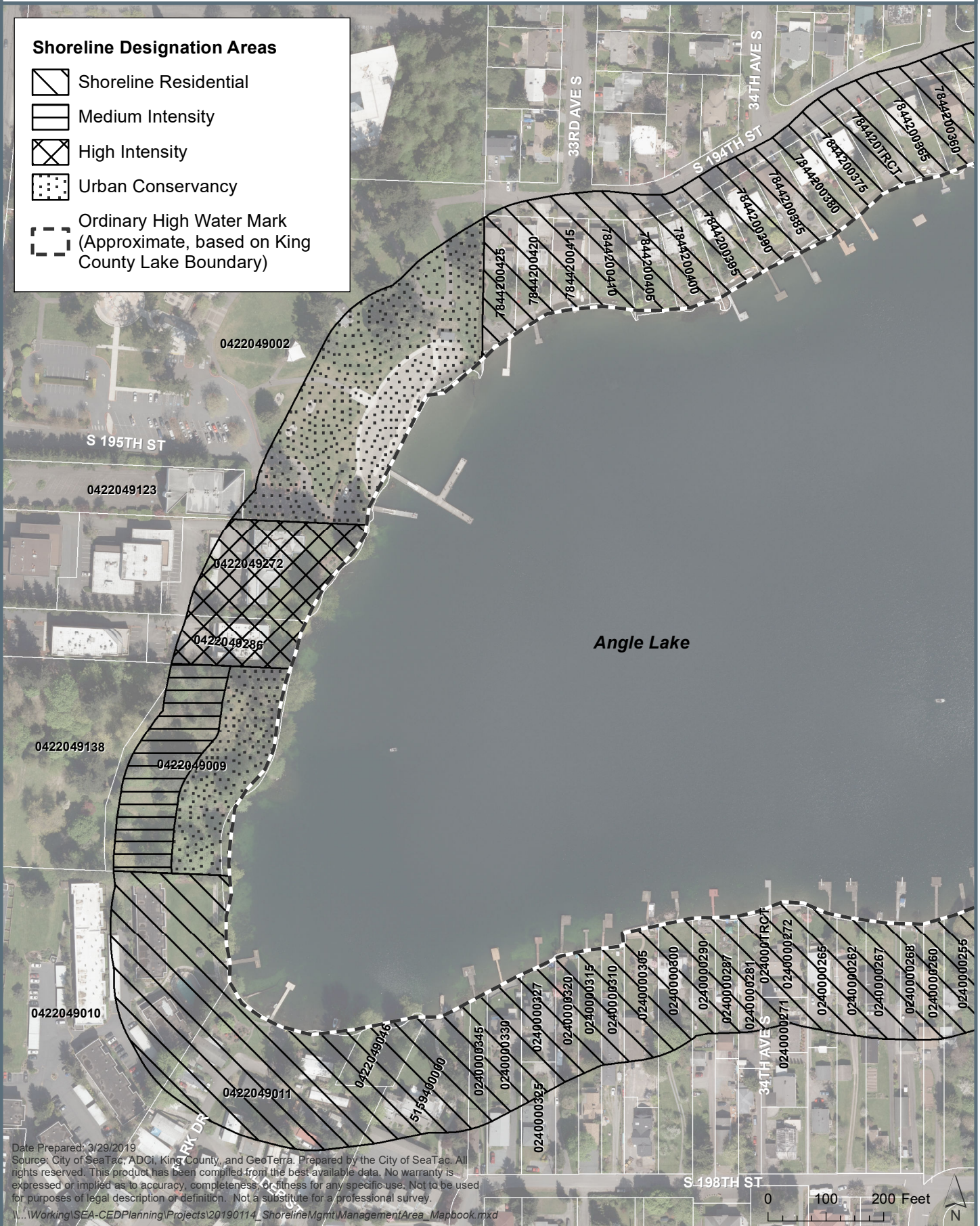


Figure 2. Shoreline Designation Details (Page 1 of 5)



**Shoreline Designation Areas**

-  Shoreline Residential
-  Medium Intensity
-  High Intensity
-  Urban Conservancy
-  Ordinary High Water Mark  
(Approximate, based on King County Lake Boundary)

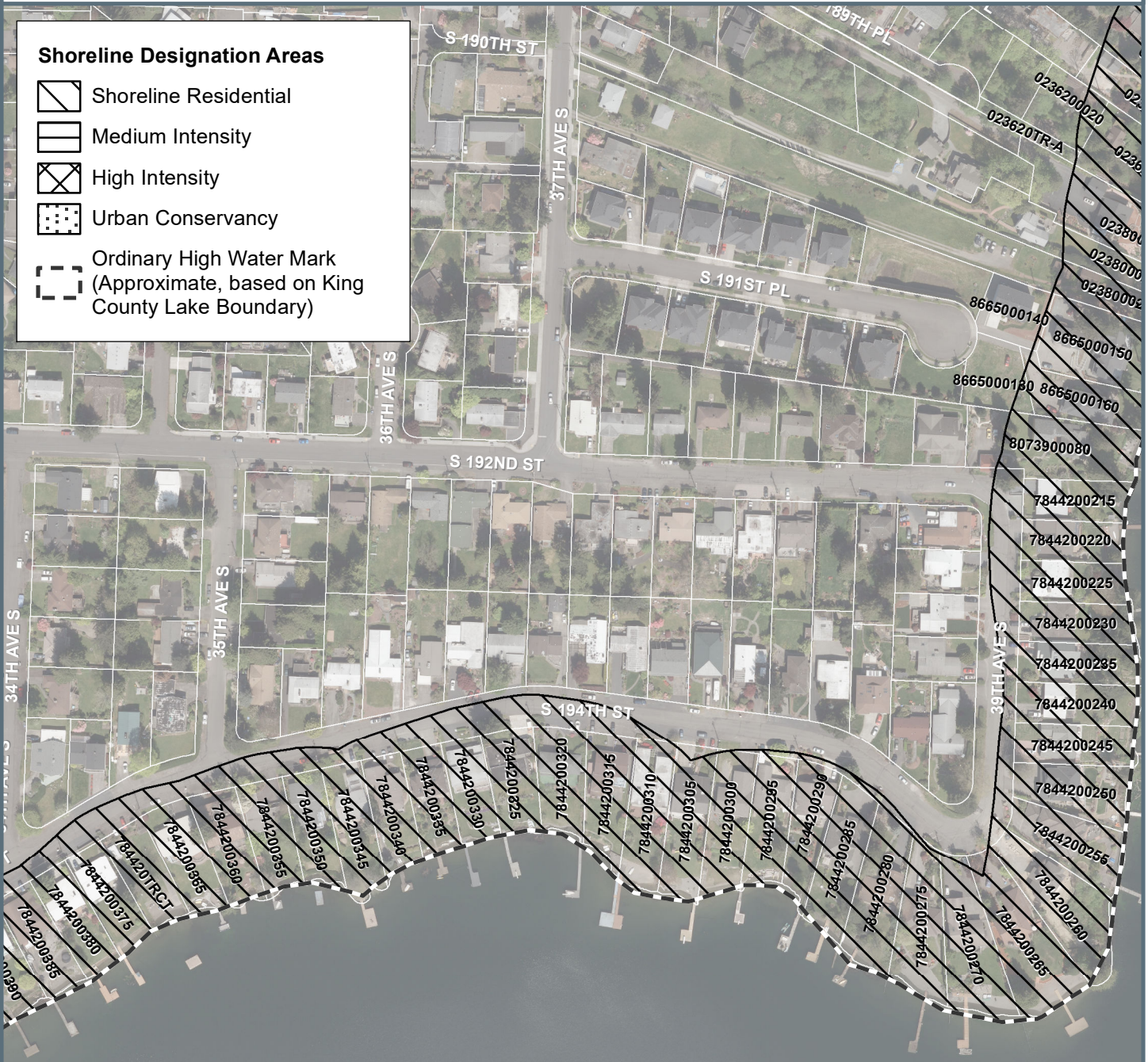


Date Prepared: 3/29/2019  
 Source: City of SeaTac, ADCI, King County, and GeoTerra. Prepared by the City of SeaTac. All rights reserved. This product has been compiled from the best available data. No warranty is expressed or implied as to accuracy, completeness, or fitness for any specific use. Not to be used for purposes of legal description or definition. Not a substitute for a professional survey.










Figure 2. Shoreline Designation Details (Page 2 of 5)



**Shoreline Designation Areas**

-  Shoreline Residential
-  Medium Intensity
-  High Intensity
-  Urban Conservancy
-  Ordinary High Water Mark  
(Approximate, based on King County Lake Boundary)

Angle Lake

Date Prepared: 3/29/2019  
 Source: City of SeaTac, ADCI, King County, and GeoTerra. Prepared by the City of SeaTac. All rights reserved. This product has been compiled from the best available data. No warranty is expressed or implied as to accuracy, completeness, or fitness for any specific use. Not to be used for purposes of legal description or definition. Not a substitute for a professional survey.

0 100 200 Feet













Figure 2. Shoreline Designation Details (Page 5 of 5)

