



Community & Economic
Development Department
4800 South 188th Street
SeaTac, WA 98188-8605
Phone: 206.973.4750
Fax: 206.973.4809

MEMORANDUM

Date: October 16, 2018
To: Planning Commission
From: Kate Kaehny, Senior Planner
Re: Comprehensive Plan Website & Copies of City Center Plan

The purpose of this memo is to provide you with information on how you can access the Comprehensive Plan and City Center Plan on the City's website.

Background information and digital copies of these plans are available at the following link:

<http://www.seatacwa.gov/government/comprehensive-plan>

(Alternatively, you can do a web search for "SeaTac Comprehensive Plan" and reach the same web page.)

For your convenience, I have copied the website's information on SeaTac's subarea plans, including a link to the City Center Plan, below.

Subarea Plans

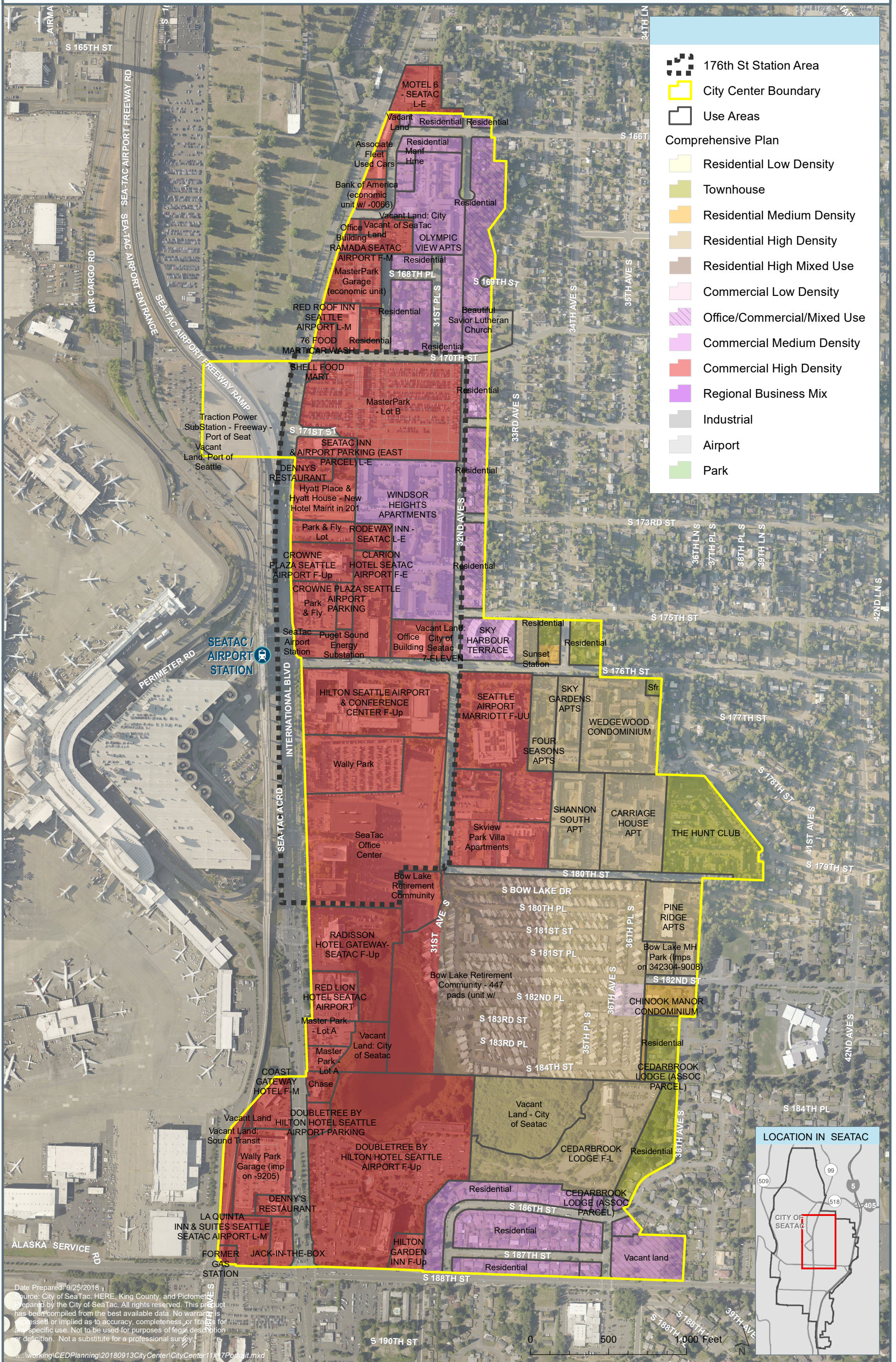
SeaTac's Comprehensive Plan also includes three Subarea Plans, which are like Comprehensive Plans in that they address a variety of topics (e.g., land use, transportation, urban design) but apply to a specific geographic area of the City.

SeaTac's three adopted Subarea Plans are:

- The [City Center Plan](#), adopted December, 1999. **Note:** Portions of the City Center Plan were amended through the 2010 Comprehensive Plan Amendment Process.
- The [S. 154th St. Station Area Action Plan](#), adopted December, 2006
- The [Angle Lake District Station Area Plan](#), adopted July 28, 2015

Lastly, please let me know if you would like a hard copy of the City Center Plan, and I will provide you with one.

CITY CENTER BOUNDARY WITH COMPREHENSIVE PLAN - DRAFT



Date Prepared: 9/25/2018
 Source: City of SeaTac, HERE, King County, and Pictometry
 Prepared by the City of SeaTac. All rights reserved. This product
 has been compiled from the best available data. No warranty is
 expressed or implied as to accuracy, completeness, or fitness for
 any specific use. Not to be used for purposes of legal description
 or definition. Not a substitute for a professional survey.