

DRAFT MASTER PLAN

SEATAC PARKS AND REC COMMITTEE MEETING - 7.5.18

SiteWorkshop
LANDSCAPE ARCHITECTURE

H I G H L I N E  S E A T A C
B O T A N I C A L G A R D E N



PARTNERSHIPS

STEERING COMMITTEE

- Highline Botanical Garden Foundation
- City of SeaTac Parks Dept.

STAKEHOLDERS

- City of SeaTac
- Port of Seattle
- Southside Chamber of Commerce
- Southside Regional Tourism Authority
- Former Board Members
- Rotary Club of Duwamish Southside
- Exchange Club of Highline
- Parkside Garden Club

COMMUNITY OUTREACH

- May Plant Sale
- Rotary Club Breakfast
- Burien Farmers Market
- Online Survey

MASTER PLAN GOALS

GOALS

- Create a framework plan to guide future development of the Garden, **enhancing the HSBG mission** of:
 - Community ownership & stewardship
 - Demonstration of gardening best practices
 - Preservation of historic neighborhood legacy.
- Improve the Garden's **capacity to sustain itself** by attracting new members, volunteers and patrons.
- Engage the community to ensure that growth of the Garden reflects their character, needs and desires.
- **Increase visitorship and awareness** of the Garden, both locally and regionally.
- Cultivate the **next generation of garden stewards** through new programming and feature elements.

PRIORITIES

- Provide a **menu of actionable projects** that can be implemented over time as funding becomes available.
- Identify **new planting display & educational opportunities**.
- Improve Garden **infrastructure, amenities, and revenue-generation capacity**.
- Enhance **destination quality** of garden, especially for multi-generational visitors including children.
- Address **security** concerns through application of Crime Prevention Through Environmental Design principles (site activation, sight lines, etc).
- Advise on **staffing levels** appropriate to proposed improvements.

HISTORY

ELDA BEHM

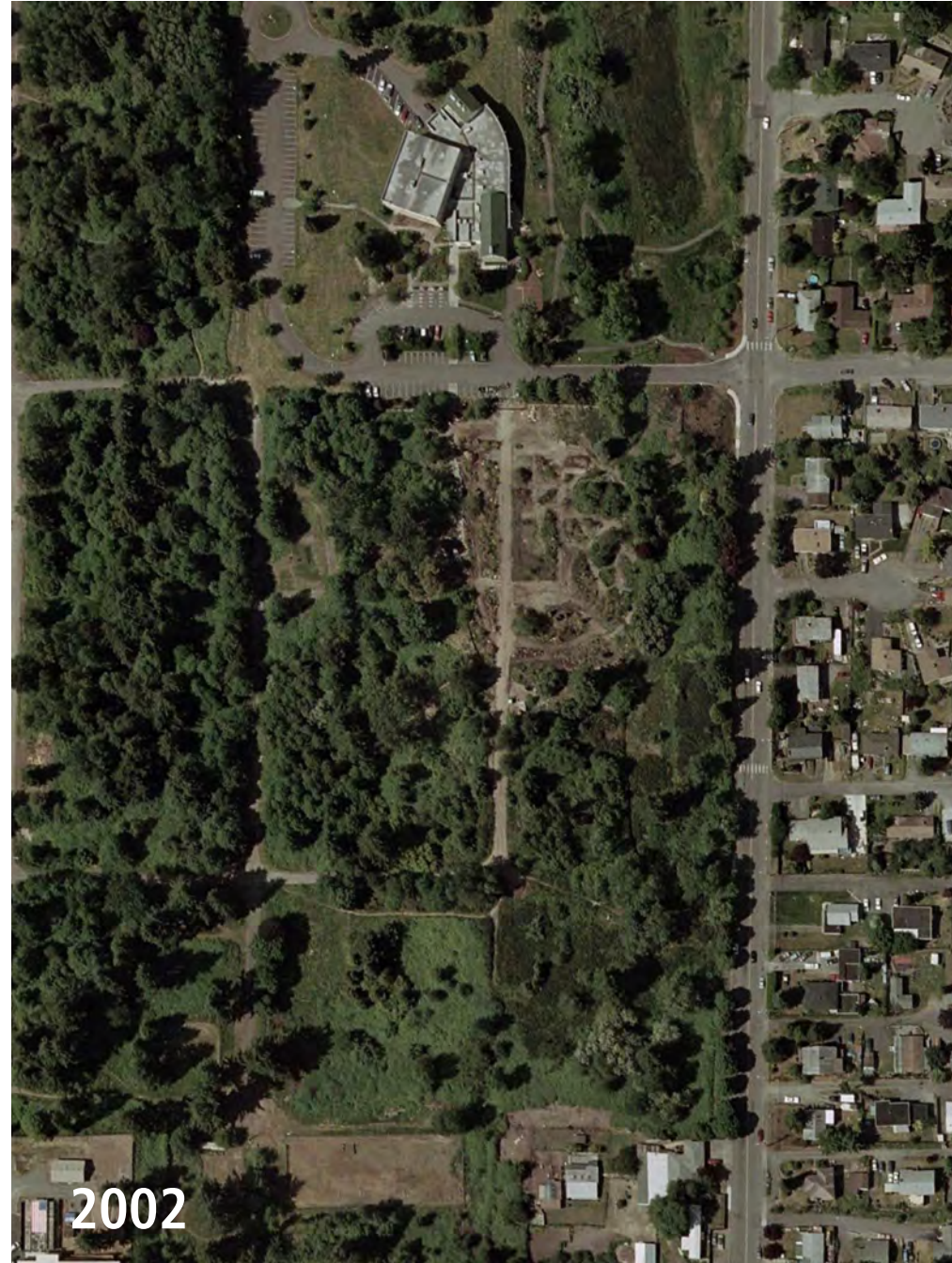


SEIKE FAMILY

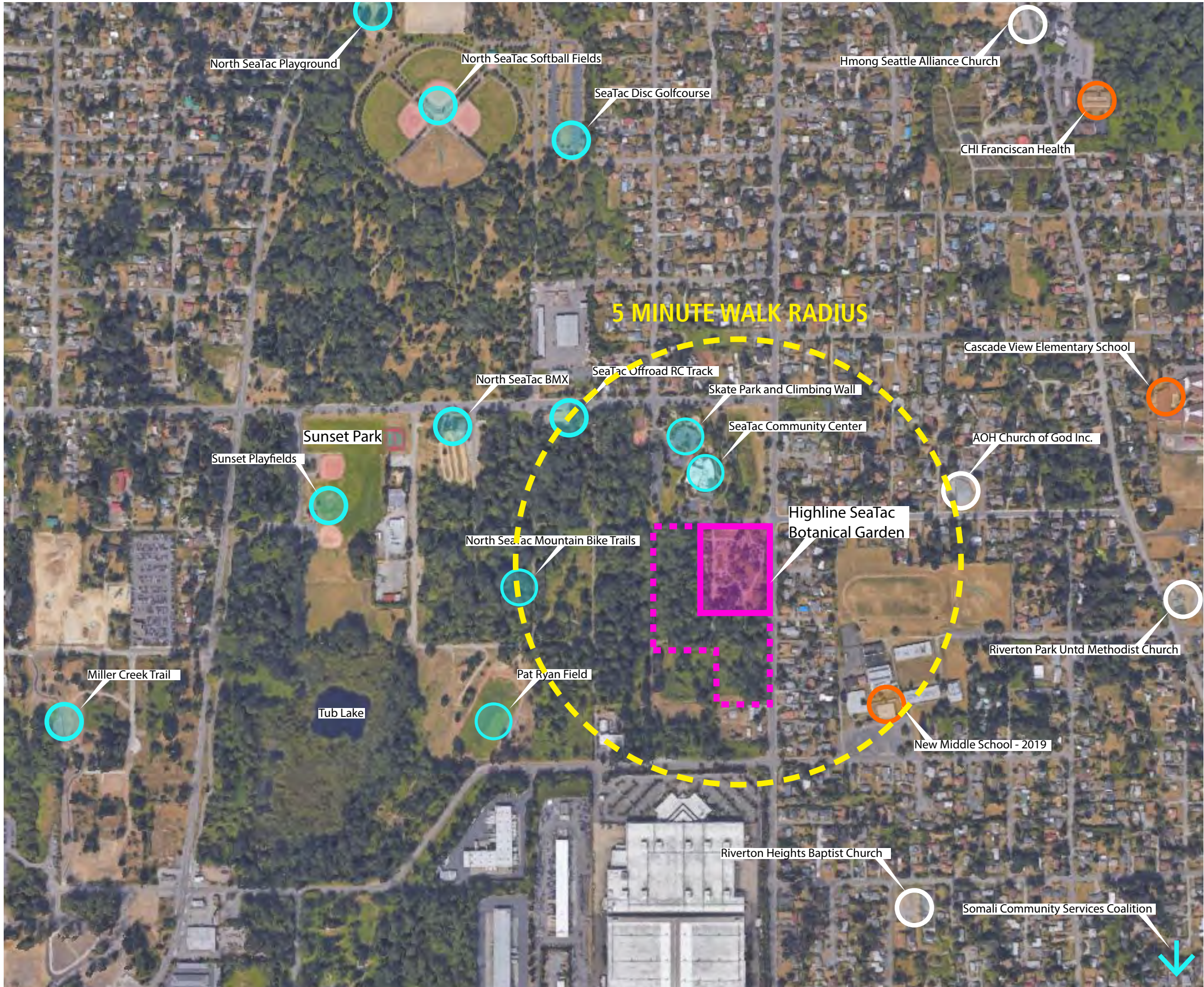


HISTORY

GROWTH OF THE GARDEN

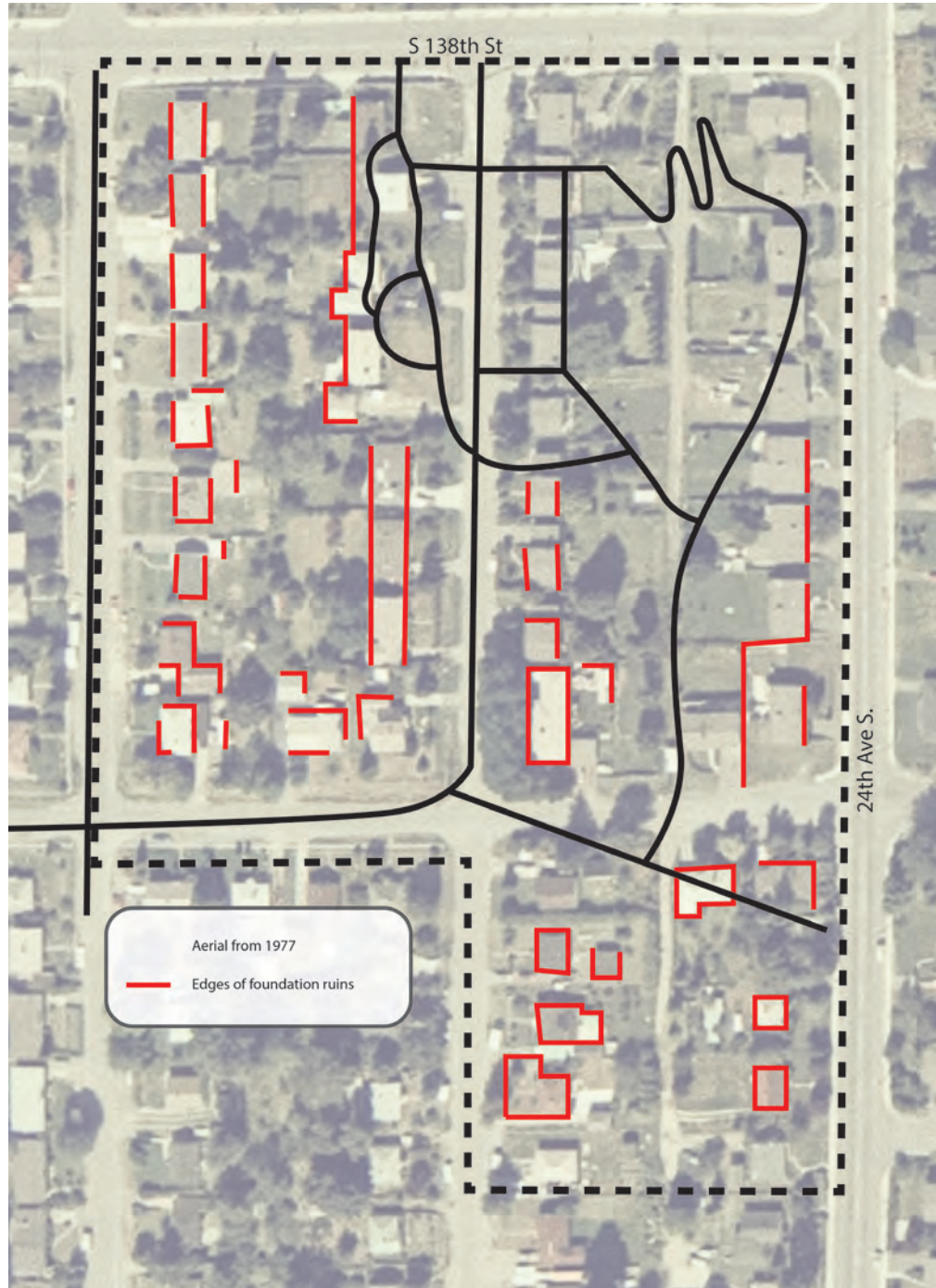


SITE ANALYSIS

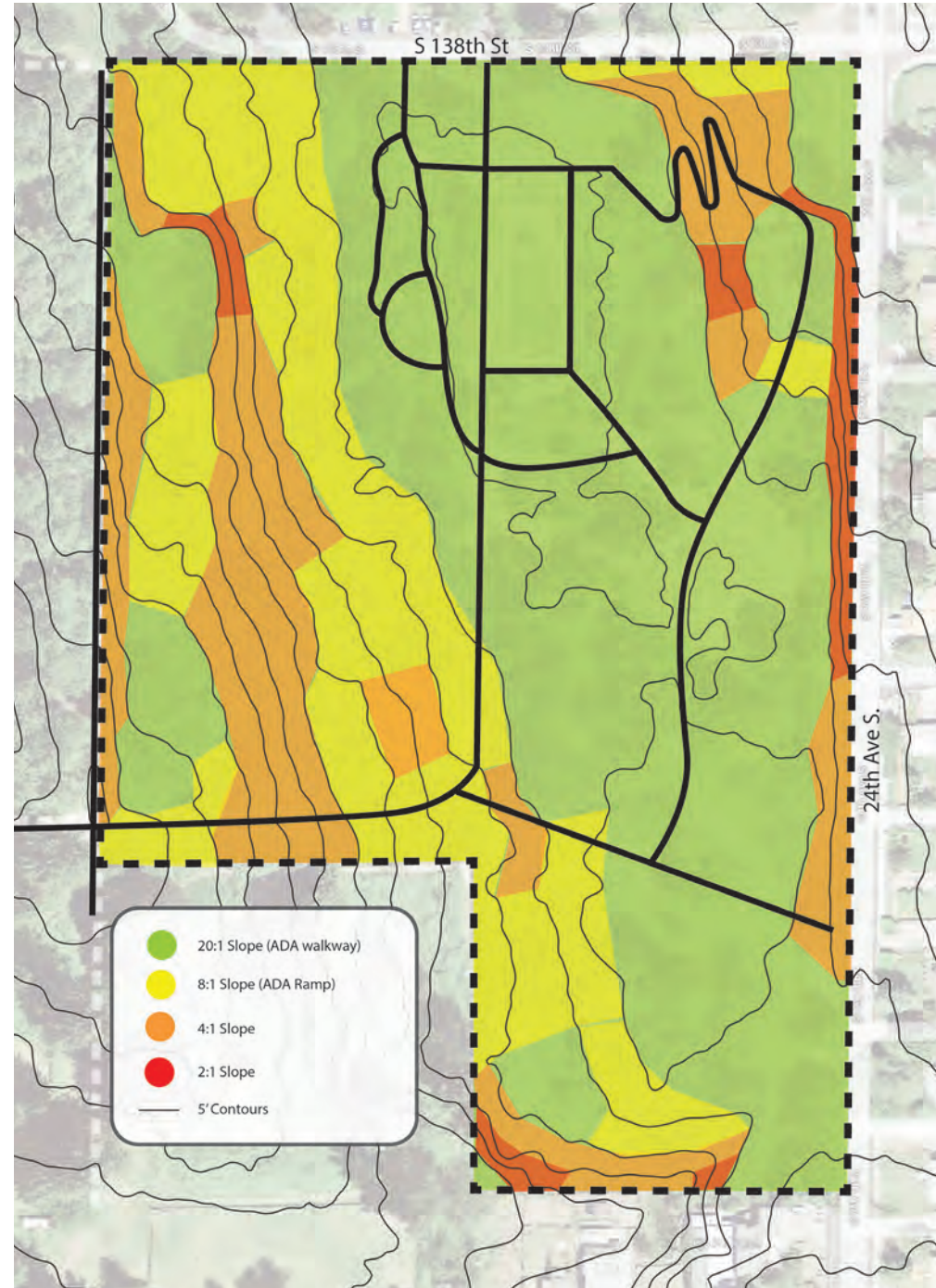


SITE ANALYSIS

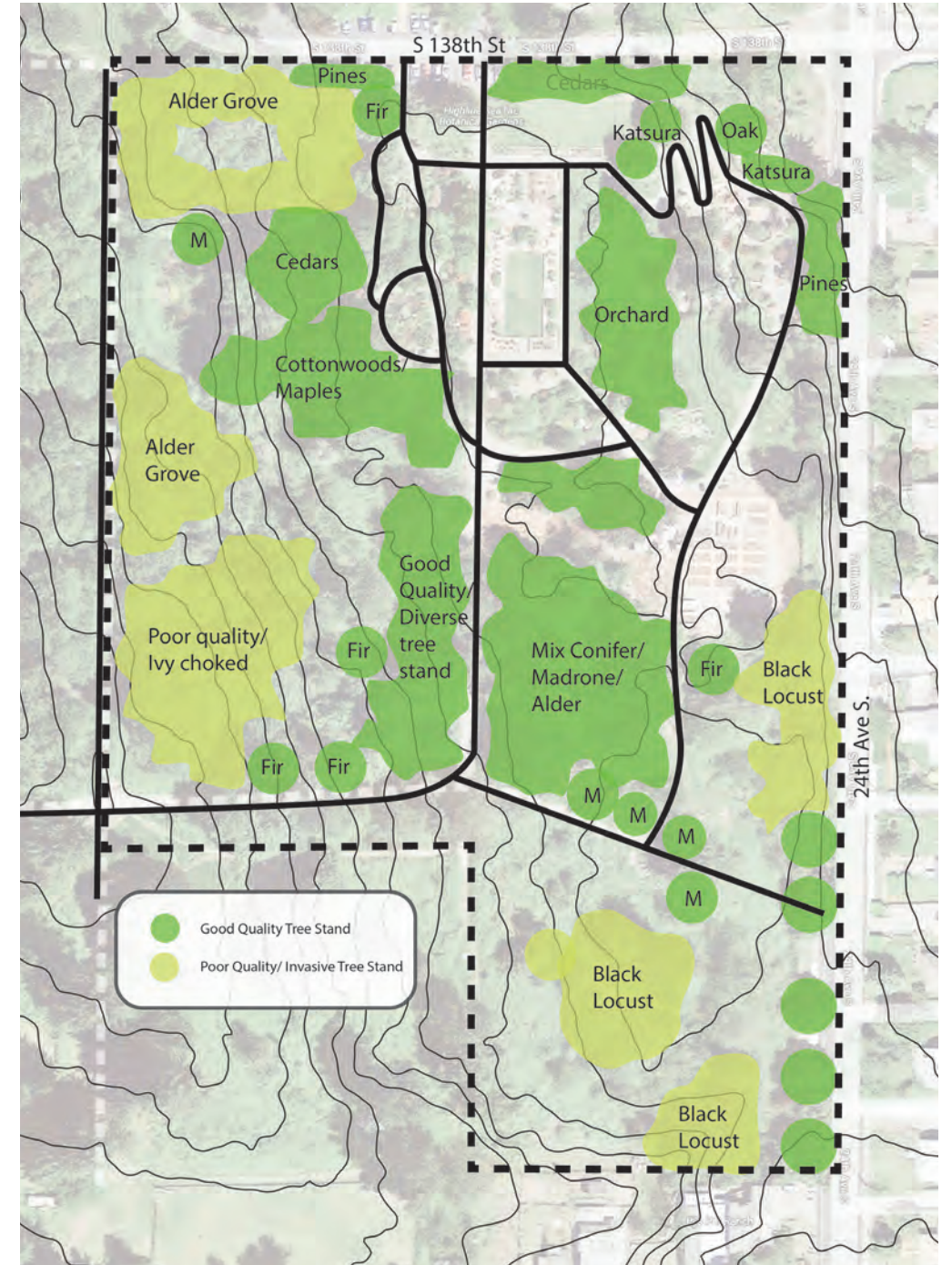
FOUNDATIONS



SLOPES

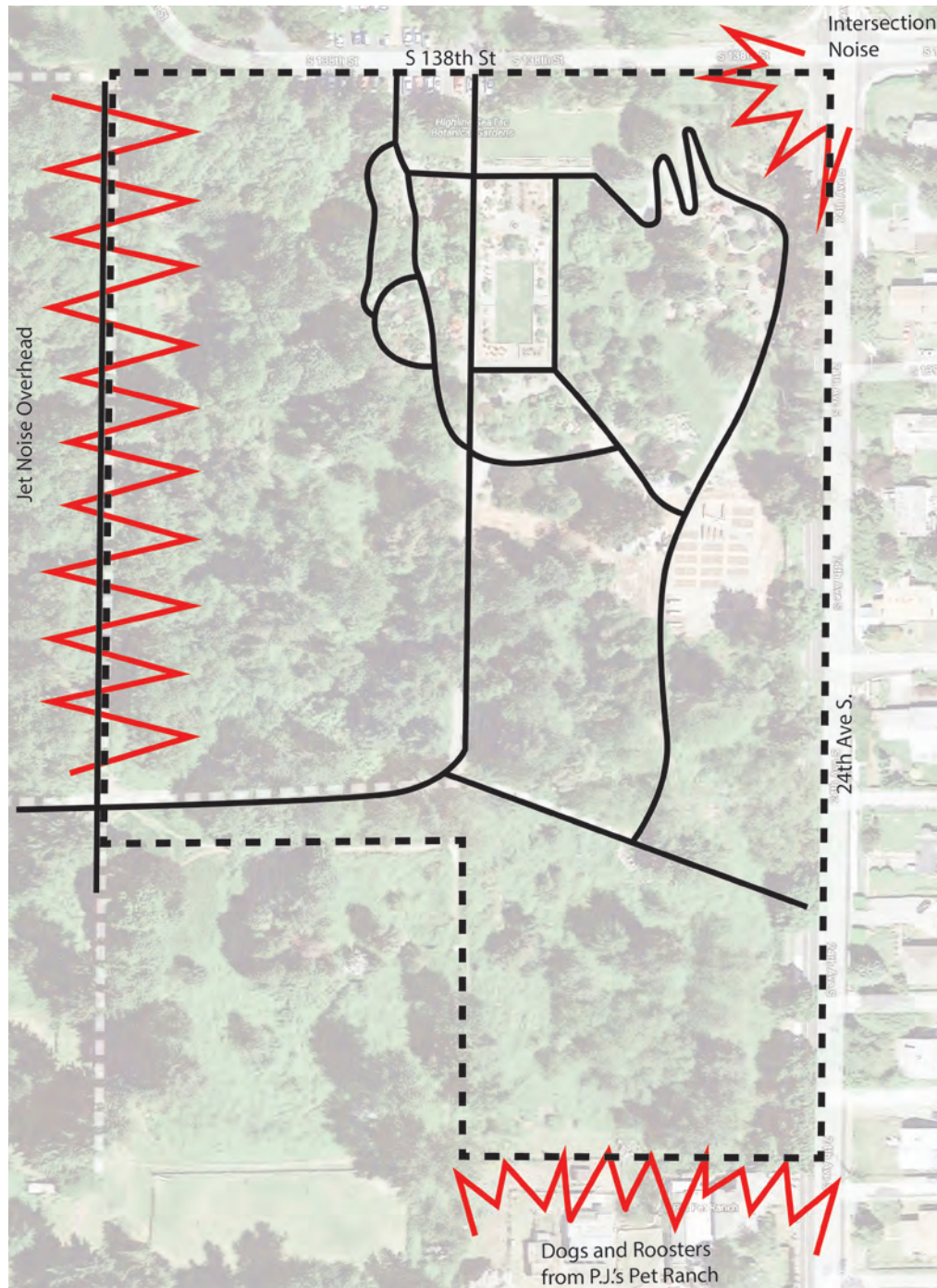


TREE ASSETS

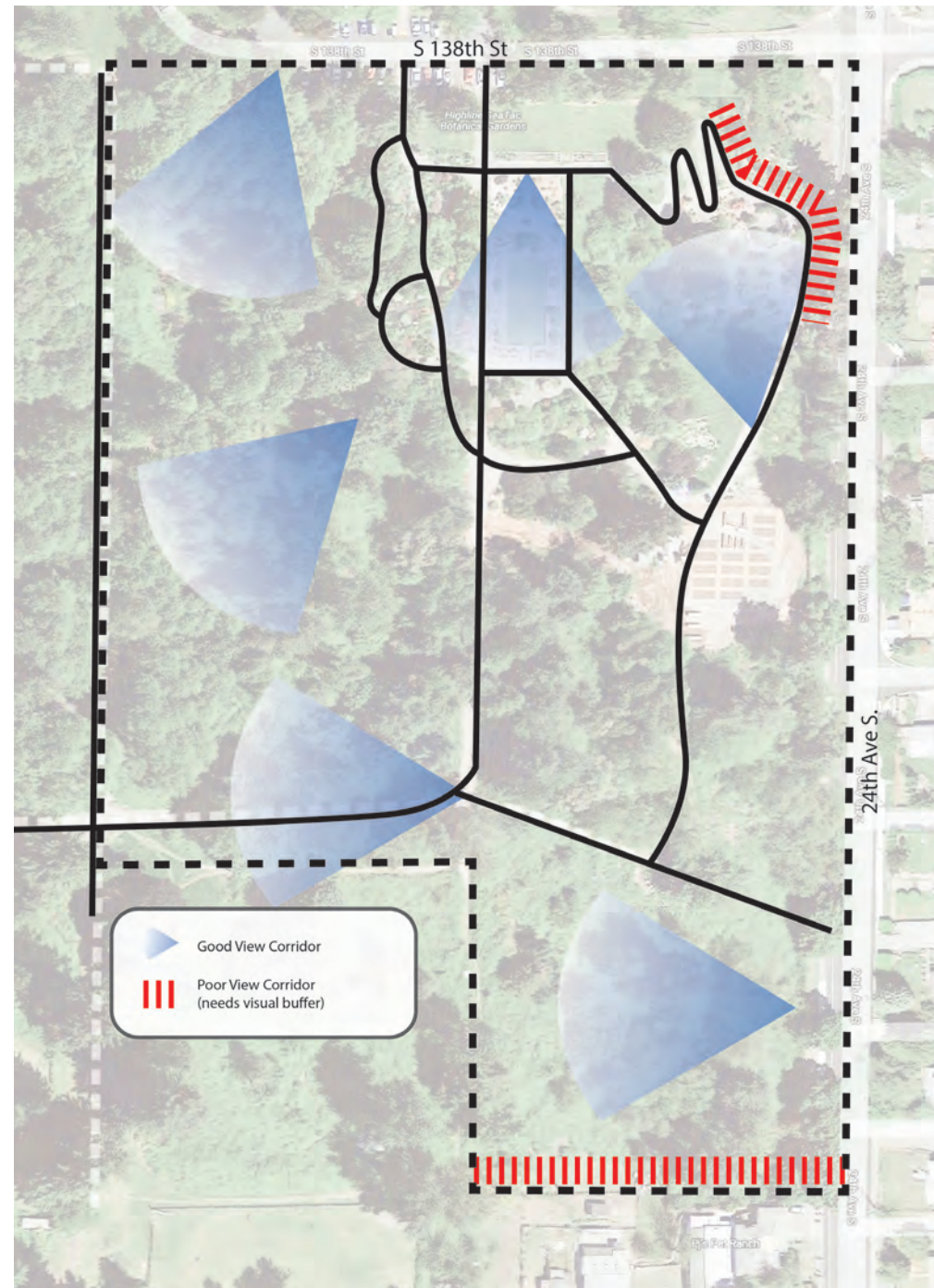


SITE ANALYSIS

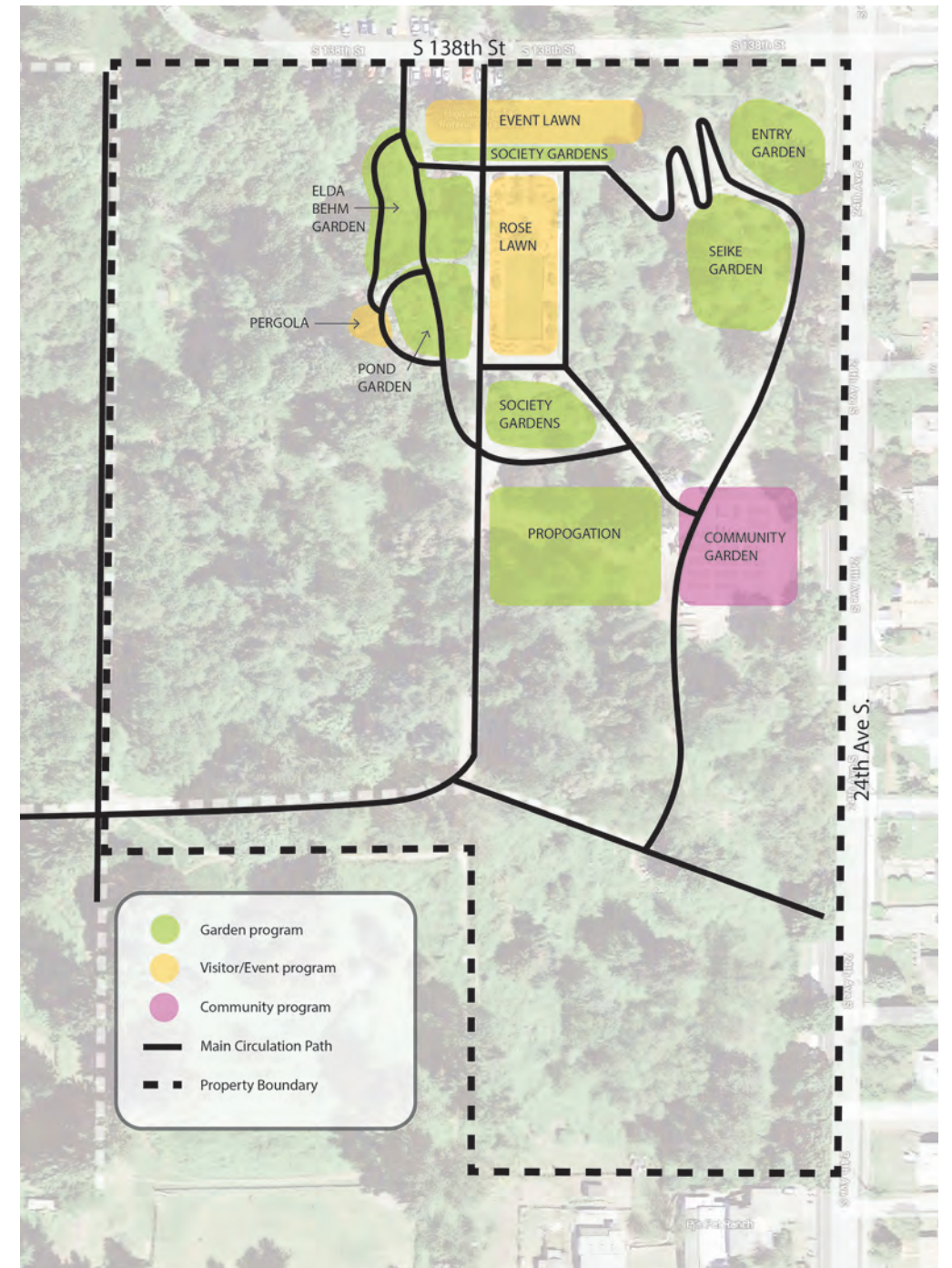
NOISE



VIEWS



EXISTING PROGRAM



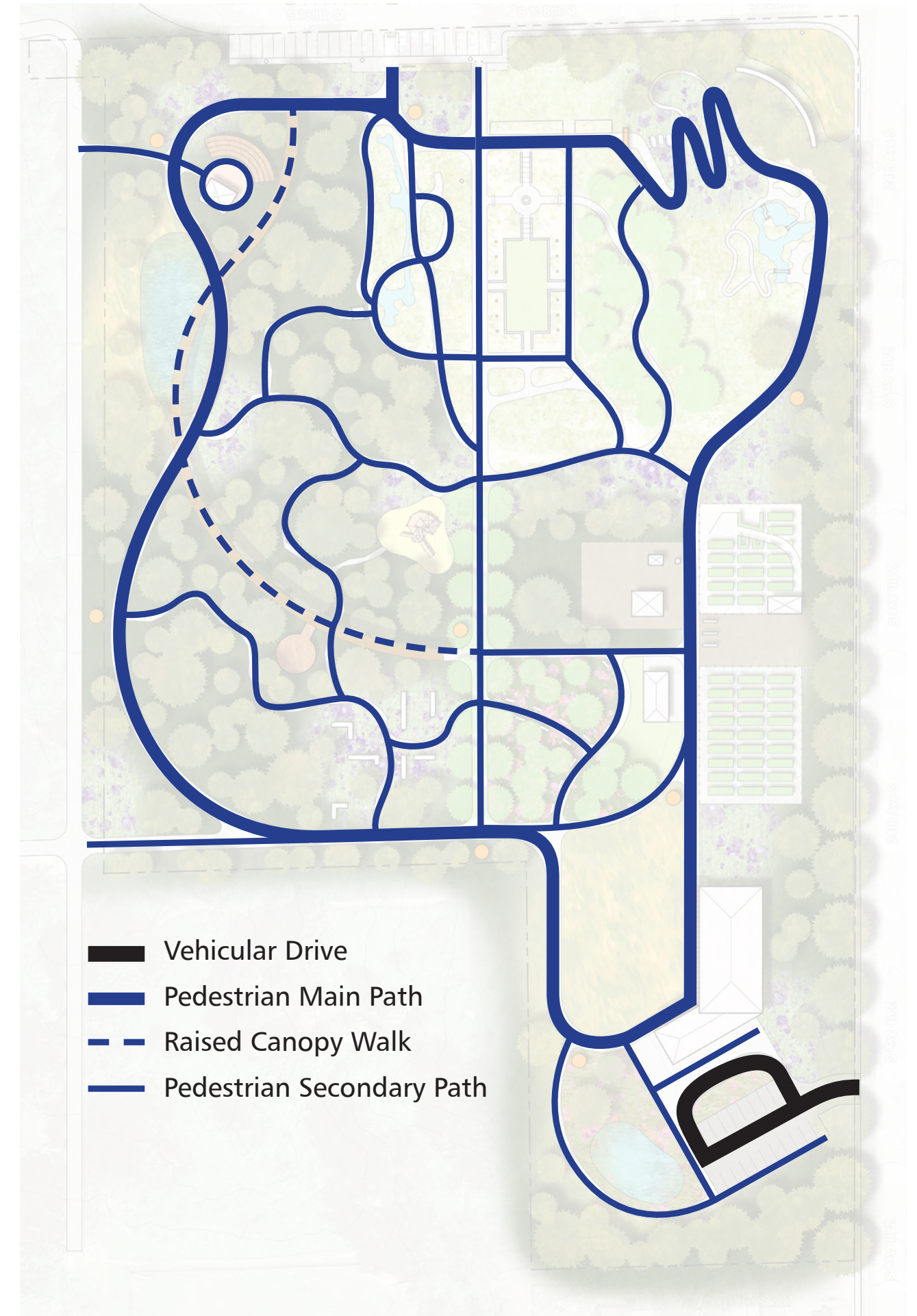
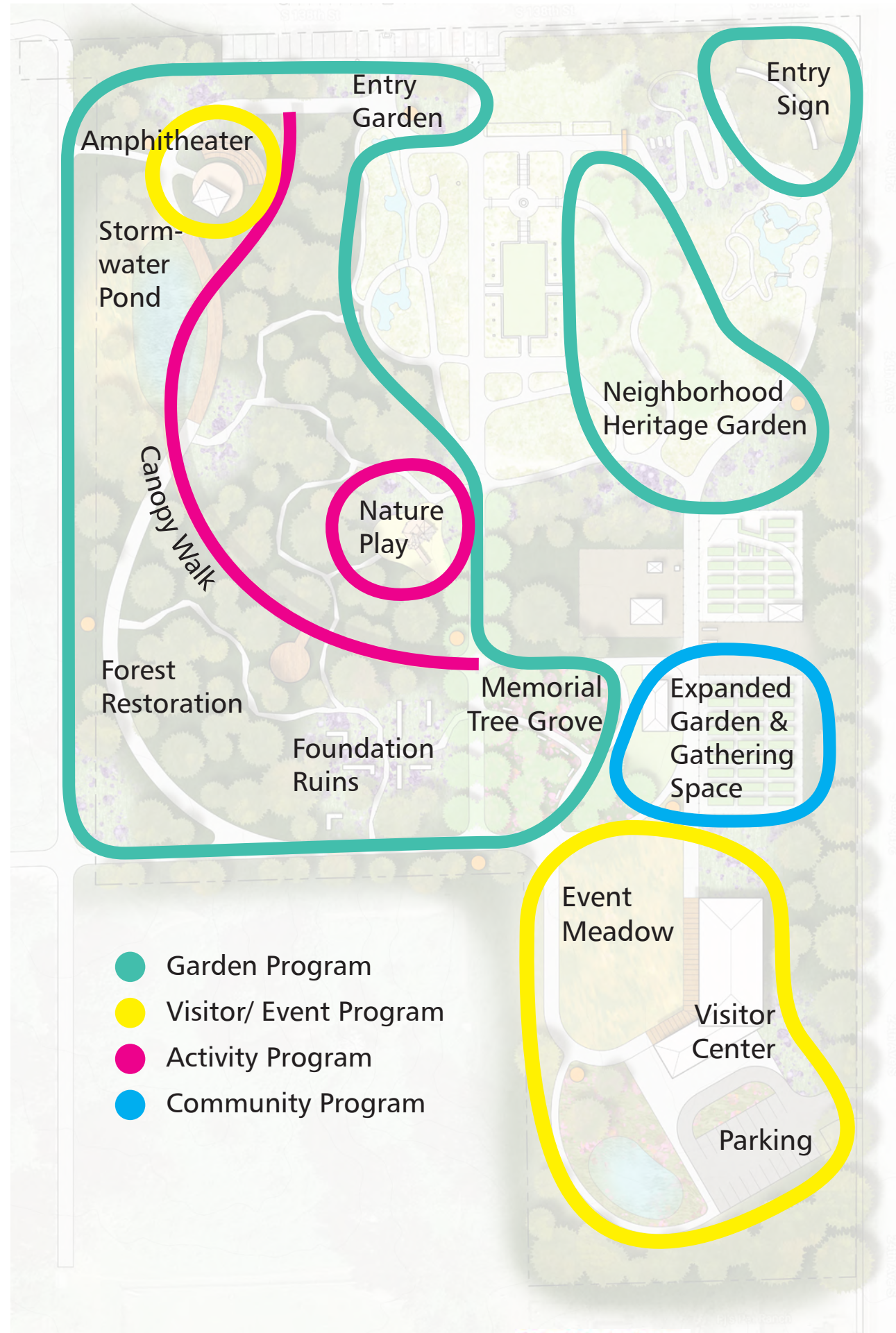
DRAFT MASTER PLAN

PROGRAM

- Large visitor center as catalyst for growth
- Adjacent Event Meadow
- Showcase sustainable development best-practices
- Canopy walk
- Woodland restoration celebrating ecological succession with Pacific Northwest plants
- Restored Wetland and boardwalk
- Amphitheater and performance space
- Nature Play
- Foundation Ruins Garden
- Expanded Pea-Patch and community pavilion
- Apiary
- Entry Sign and wayfinding
- Additional Display Gardens
- Seike Gateway and Expansion

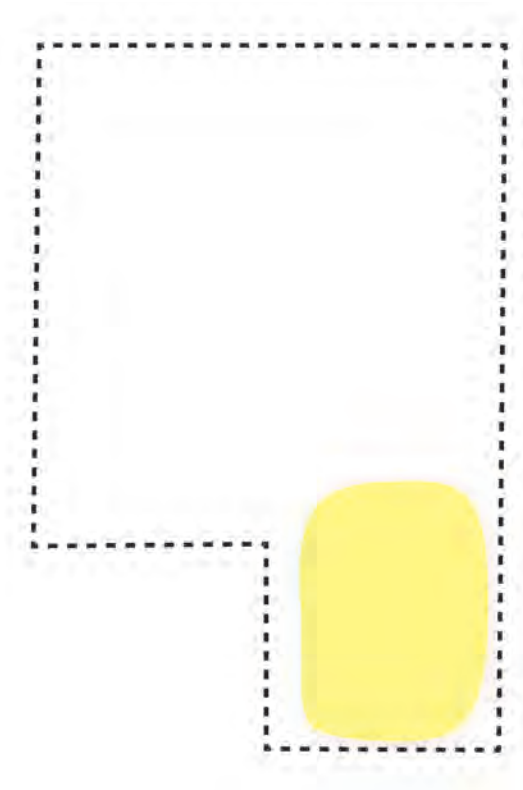


PROGRAM



PROGRAM ELEMENT

VISITOR CENTER AND EVENT MEADOW

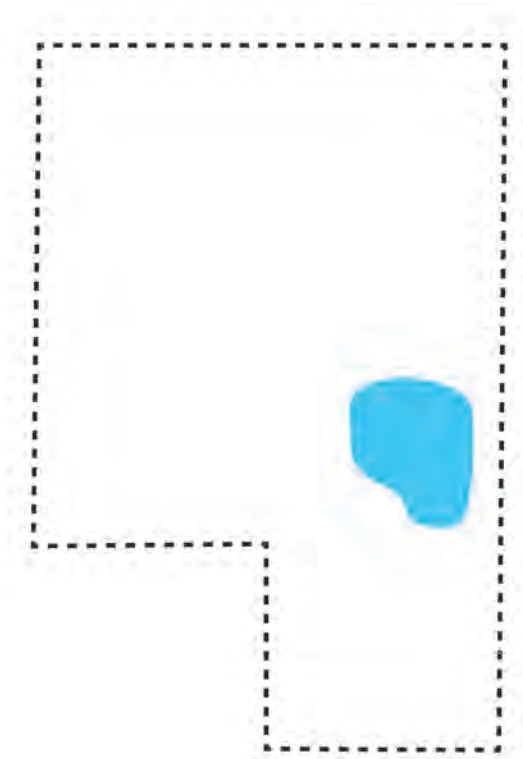


- Activates SE corner and provides secondary gateway
- Facility large enough to accommodate classroom, library, staff offices, kitchen, events, etc.
- Space able to accommodate a 200 person event
- Event Meadow to be a horticultural display.
- Meadow can be mowed for larger events



PROGRAM ELEMENT

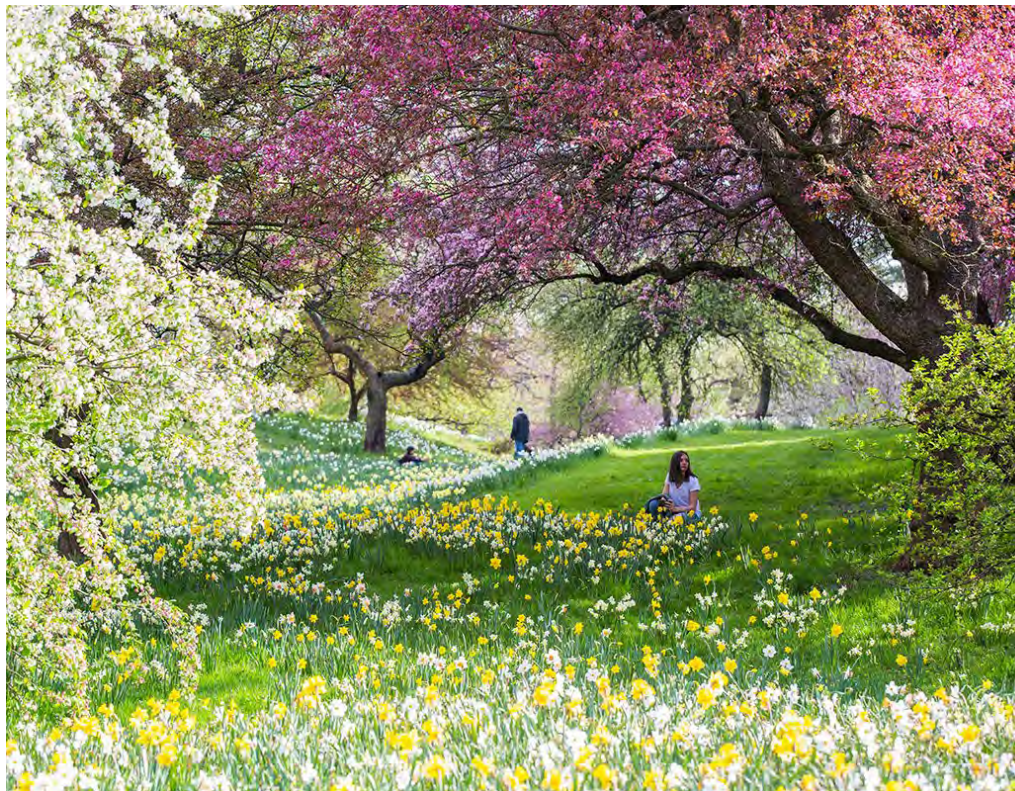
EXPANDED COMMUNITY GARDEN AND GATHERING SPACE, APIARY, POLLINATOR MEADOW



- Expand community garden with additional plots to further activate southern end
- Add covered space for community gathering related to agricultural program.
- provide additional space for existing apiary
- plant pollinator species adjacent to agricultural areas.

PROGRAM ELEMENT

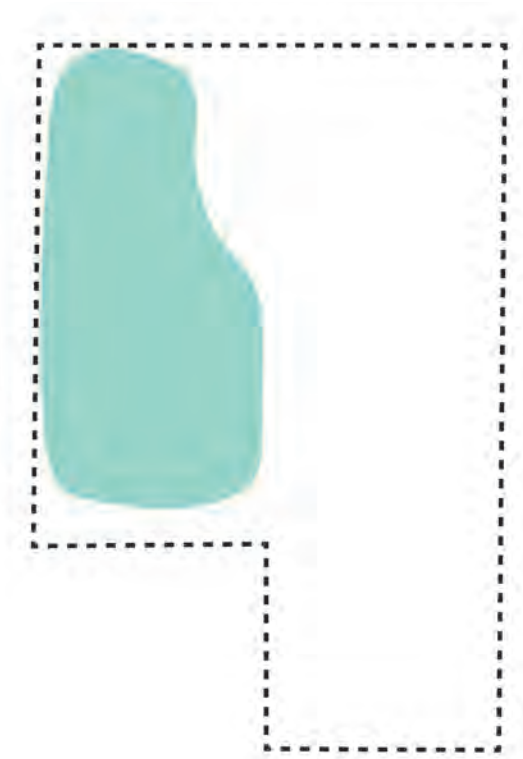
MEMORIAL TREE GROVE



- Memorial / Commemorative Garden centered around tree donations
- Could include memorial plaques or commemorative furnishings.
- Possibility for donated bulbs/ groundcovers (sim. to New York Botanical Garden)

PROGRAM ELEMENT

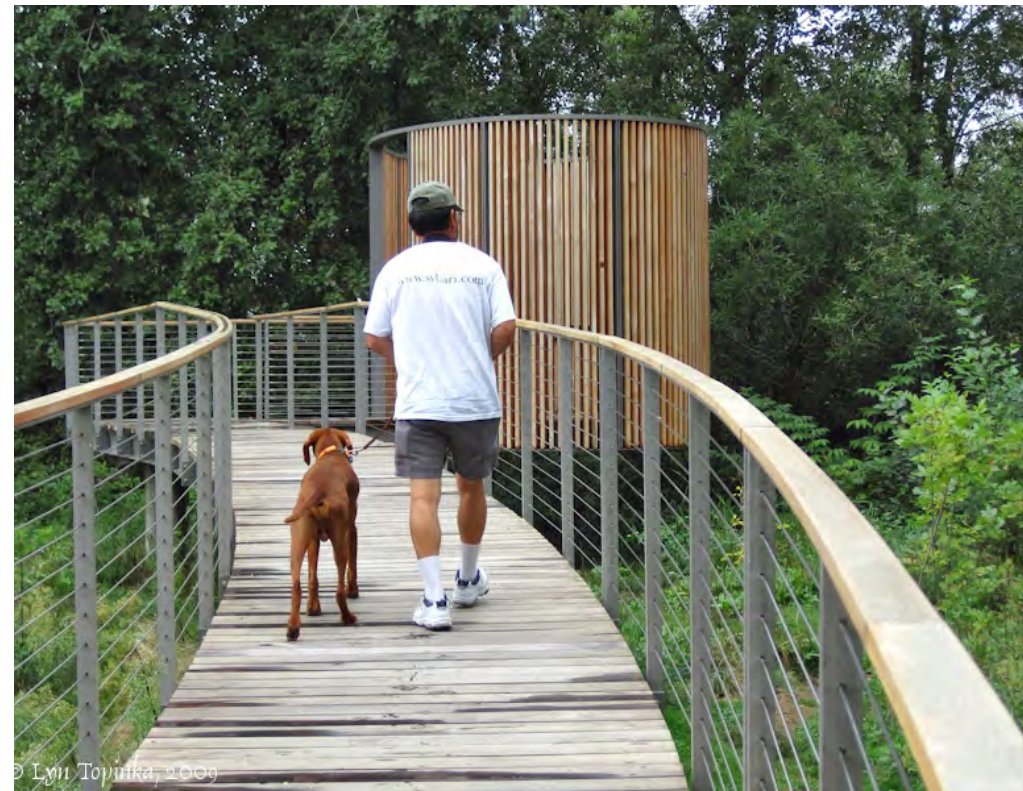
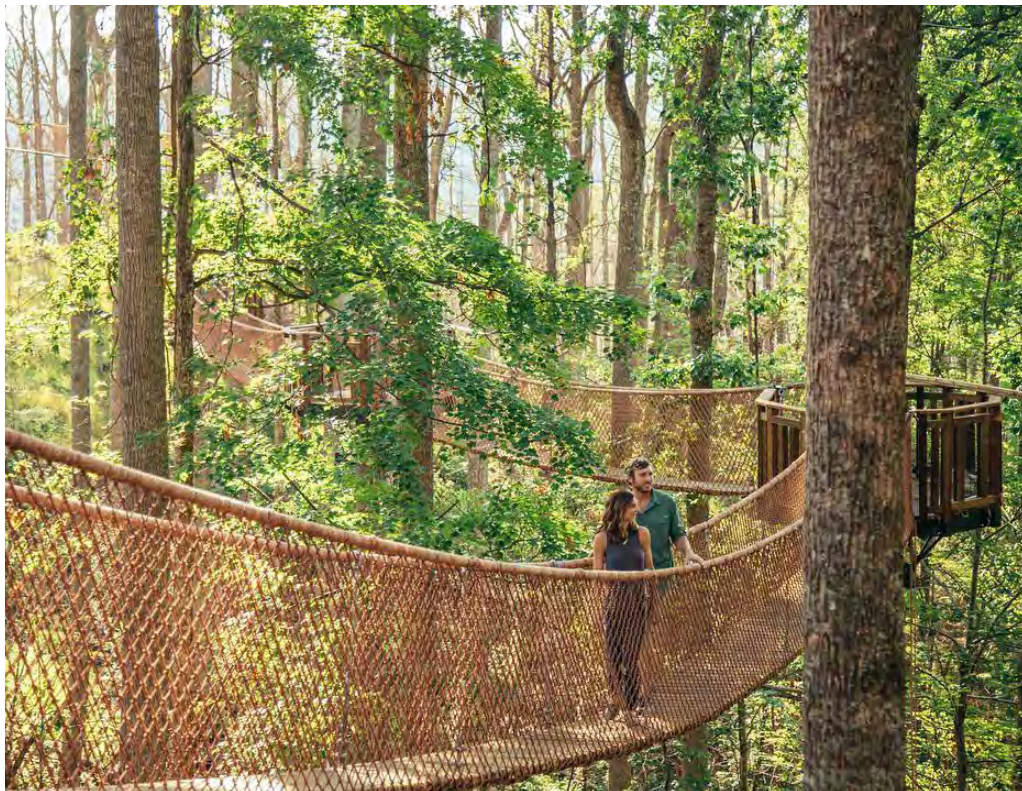
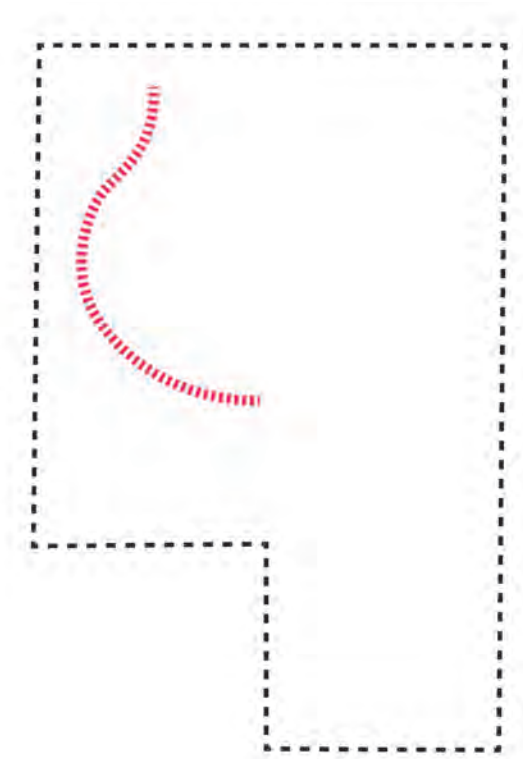
FOREST GARDEN



- Clear and grub all invasives
- Preserve existing assets
- Remove only hazard trees
- Restore with PNW native plants
- Tell story of succession

PROGRAM ELEMENT

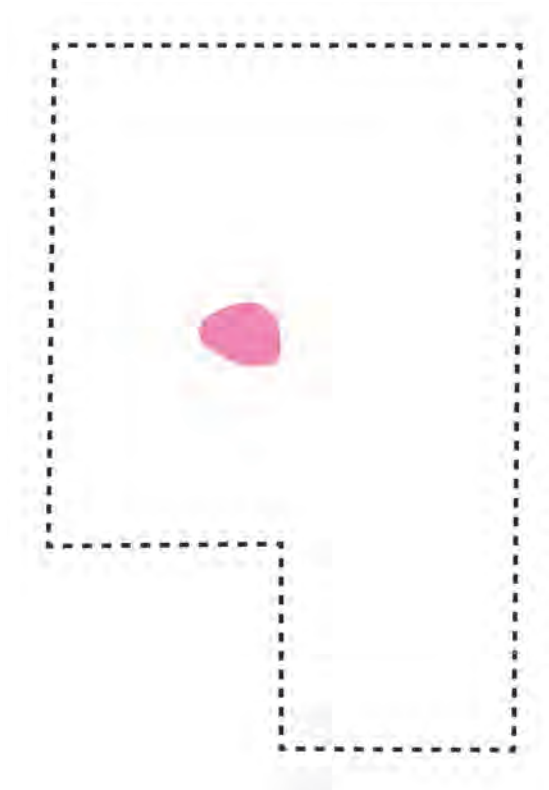
CANOPY WALK



- Simple canopy walk for wildlife observation
- Fun addition to the forest garden
- Regional attraction
- Attractive for big donors

PROGRAM ELEMENT

NATURE PLAY

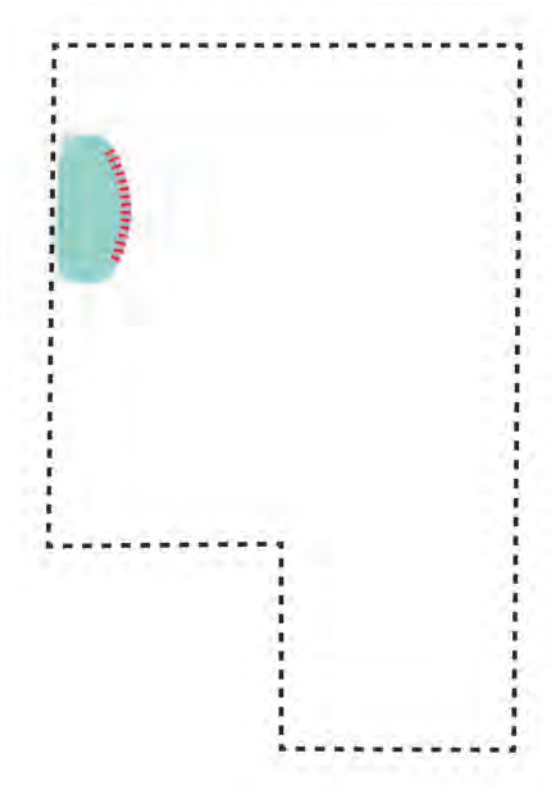


- Distinct area for children focused on unstructured play and nature education.
- Buffered from more tranquil parts of garden
- Helps develop future stewards of the garden

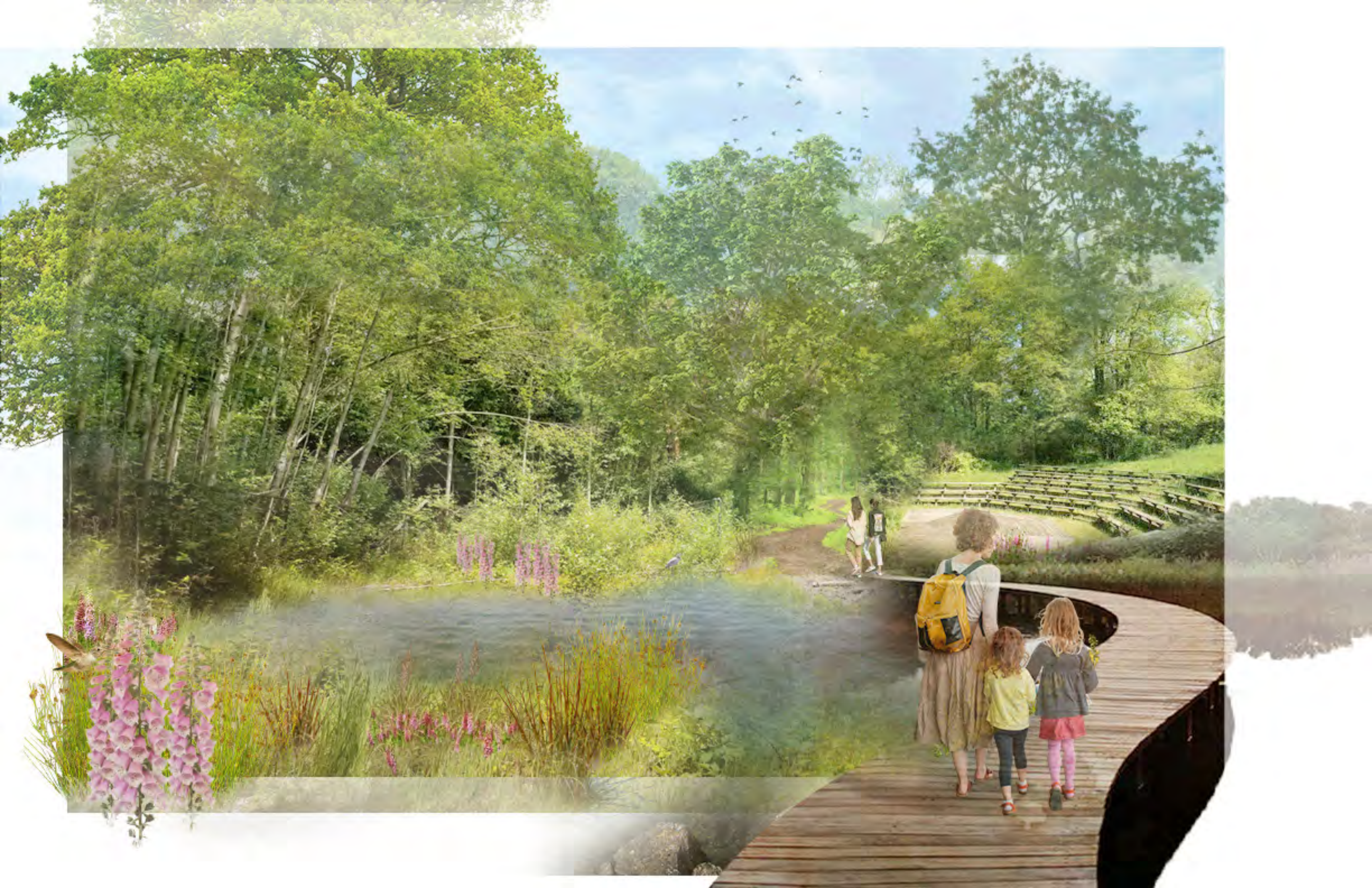


PROGRAM ELEMENT

WETLAND RESTORATION AND BOARDWALK

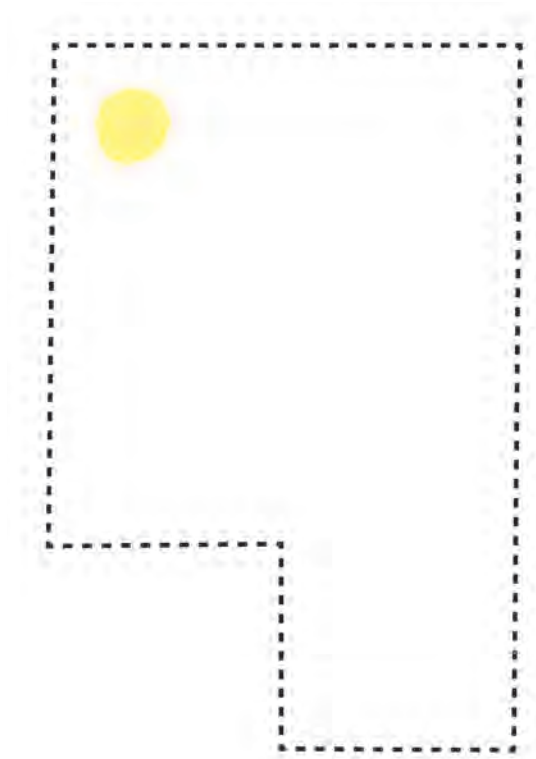


- Restore planting at stormwater detention facility as ornamental feature with boardwalk
- Performance space and amphitheater associated with wetland improvements



PROGRAM ELEMENT

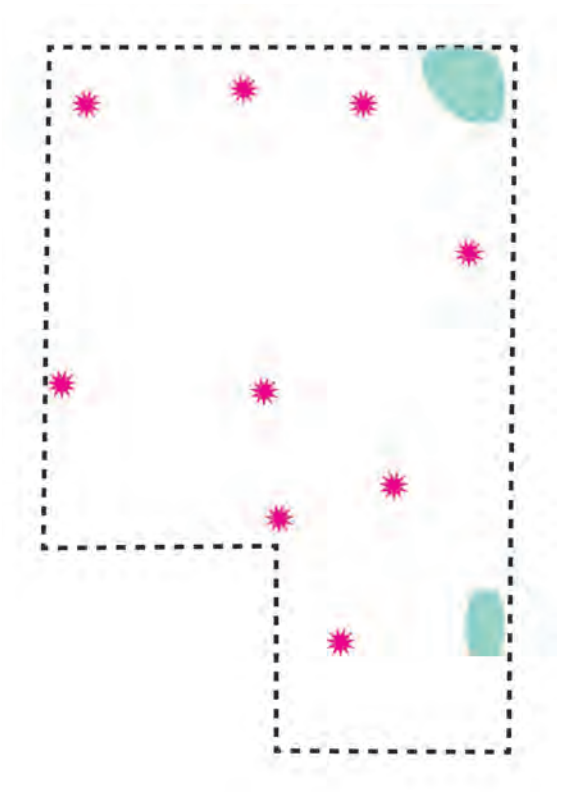
AMPHITHEATER AND PERFORMANCE SPACE



- Performance space and amphitheater for 50-100 people
- Views to the wetland
- Forested to buffer aircraft sounds

PROGRAM ELEMENT

ENTRY SIGN AND WAYFINDING



- Integrate visible signage element
- Revise entry planting with attractive, dough-tolerant and low-maintenance landscape
- Consider seeded meadow or landscape plugs to control costs and maintenance
- Create family of wayfinding elements throughout garden at key points



PROGRAM ELEMENT

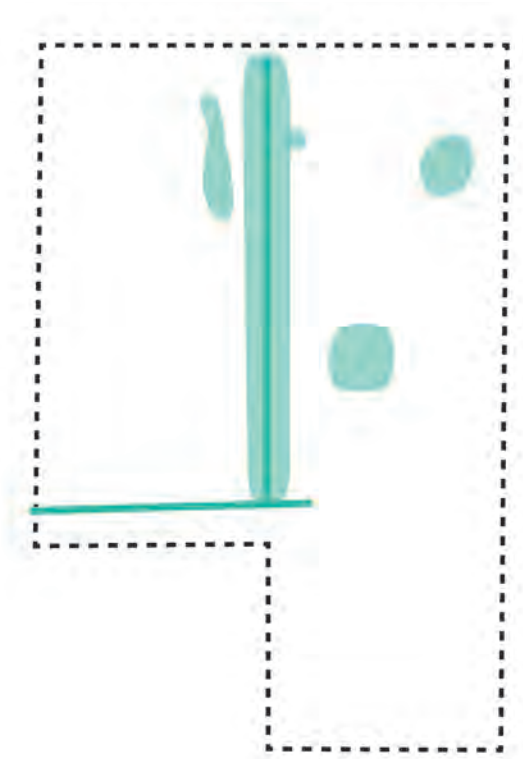
FOUNDATION GARDEN, EXPANDED SEIKE GARDEN, OTHER DISPLAY GARDENS



- Modest Seike Garden expansion with new pine trees and gateway element
- New displays

PROGRAM ELEMENT

GARDEN IMPROVEMENTS



- Update Paving
- Add Seating
- Irrigation and mechanical systems
- Increased horticultural maintenance @ edges

MAINTENANCE

GARDEN SUPPORT

- HSBG has accomplished more than they have resources for (not sustainable)
- Current maintenance is not sufficient for existing 5 acres
- Future growth requires more support
- Final Master Plan Report will break out costs as menu of options with associated proposed FTEs

EXISTING VS. PROJECTED SUPPORT

	HSBG Existing	SeaTac Existing	HSBG Proposed	SeaTac Proposed	Krucke- berg Ex.
Number of Staff FTE	.5	.5	.5	3.5	5
Executive Director	Volunteer			.5	.5
Garden Director	Volunteer		Volunteer		1
Program Director	Volunteer		Volunteer		1
Development Support / Bookkeeper	Volunteer		.5		.5
Garden Staff	.5	.5		3	2

DRAFT MASTER PLAN

PROGRAM

- Large visitor center as catalyst for growth
- Adjacent Event Meadow
- Showcase sustainable development best-practices
- Canopy walk
- Woodland restoration celebrating ecological succession with Pacific Northwest plants
- Restored Wetland and boardwalk
- Amphitheater and performance space
- Nature Play
- Foundation Ruins Garden
- Expanded Pea-Patch and community pavilion
- Apiary
- Entry Sign and wayfinding
- Additional Display Gardens
- Seike Gateway and Expansion

