

# Traffic Issues on S. 198<sup>th</sup> St. and 32<sup>nd</sup> Ave. S.

May 17, 2018



CITY OF SEATAC | Traffic Issues on S. 198th St. and 32nd Ave. S.



Legend

- Site Address
- Parcels
- MapServiceExtentWithoutSea
- Site Addresses Labels\_282
- Hotel/Motel/GroupHome Label
- Office/School/Business/Church
- Multi-Family Properties Labels
- Parcel Labels\_480
- Sea-Tac Airport Label\_480
- Light Rail Stations
- City Limits Adj Cities\_480
- City Limits Poly\_480
- Proposed Road Connecting28
- Future SR-509 Right-of-Way
- SR-509
- Dashed Line
- Transparent background
- POS Fence Line
- Parcel Outline\_480
- Runway\_480
- SeaTac Highway Labels\_480
- NAVTEQ Highway Labels\_48C
- SeaTac Road Labels\_480
- SeaTac Roads\_480
- Arterial
- Highway


Notes

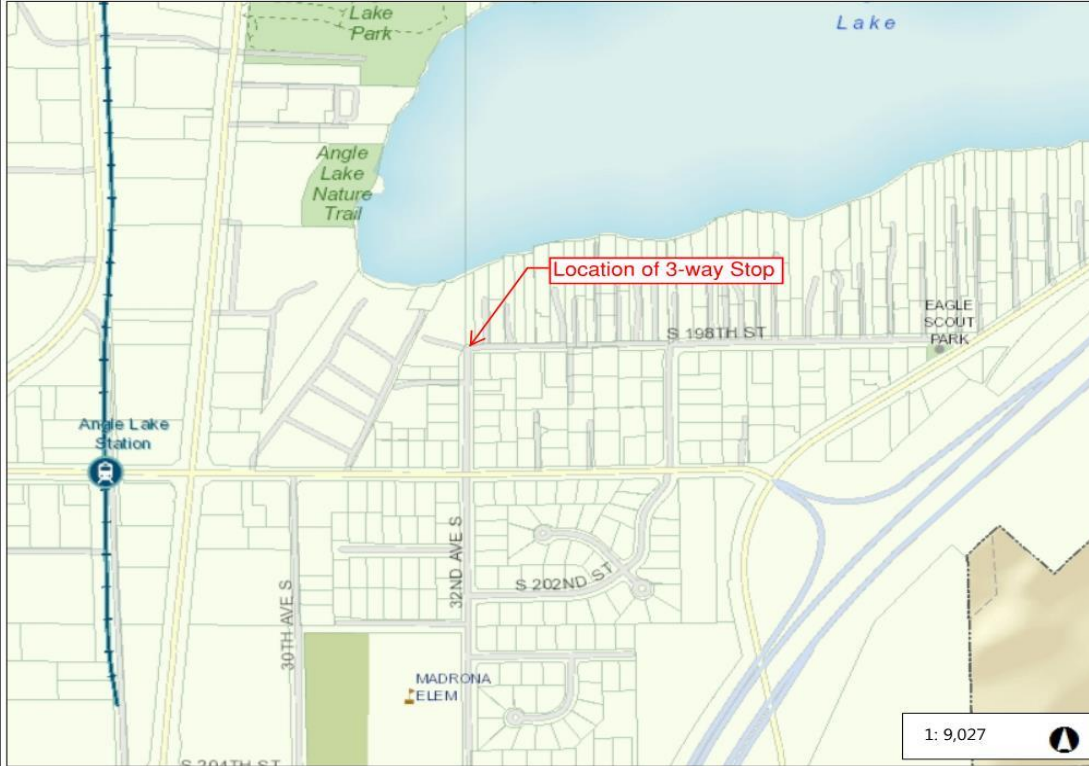
3,009.2 0 1,504.58 3,009.2 Feet

WGS\_1984\_Web\_Mercator\_Auxiliary\_Sphere  
© City of SeaTac

This map is a user generated static output from an Internet mapping site and is for reference only. Data layers that appear on this map may or may not be accurate, current, or otherwise reliable.  
**THIS MAP IS NOT TO BE USED FOR NAVIGATION**

# S. 198<sup>th</sup> St. Traffic Issue History

- March 2017 – 2 Cityworks requests received
    - Traffic counts collected and analysis performed
    - Neighborhood Traffic Safety Program (NTSP) warrants not met
  - July 2017 – WSDOT construction finished
    - Traffic counts collected and analysis performed. Speeds dropped slightly, warrants not met for NTSP
  - March 2018 – Cityworks request for signage
    - 3 “Speed Limit” signs installed and analysis performed for 3-way stop warrant
- 



1: 9,027



WGS\_1984\_Web\_Mercator\_Auxiliary\_Sphere  
© City of SeaTac


This map is a user generated static output from an Internet mapping site and is for reference only. Data layers that appear on this map may or may not be accurate, current, or otherwise reliable.  
**THIS MAP IS NOT TO BE USED FOR NAVIGATION**



- Legend**
- Site Address
  - Parcels
  - MapServiceExtentWithoutSea
  - Site Addresses Labels\_282
  - Hotel/Motel/GroupHome Label
  - Office/School/Business/Church
  - Multi-Family Properties Labels
  - Parcel Labels\_480
  - Sea-Tac Airport Label\_480
  - Light Rail Stations
  - City Limits Adj Cities\_480
  - City Limits Poly\_480
  - Proposed Road Connecting28
  - Future SR-509 Right-of-Way
  - SR-509
  - Dashed Line
  - Transparent background
  - POS Fence Line
  - Parcel Outline\_480
  - Runway\_480
  - SeaTac Highway Labels\_480
  - NAVTEQ Highway Labels\_48C
  - SeaTac Road Labels\_480
  - SeaTac Roads\_480
  - Arterial
  - Highway

**Notes**

# Next Steps

- After the 3-way stop is installed, traffic counts will be collected again and analyzed.
  - WSDOT and the City are working together to improve traffic circulation at the intersection of S. 200<sup>th</sup> St. and Military Rd. S.
  - This corridor is on the Neighborhood Sidewalk Committee's list of future sidewalk projects
- 

# Questions?

