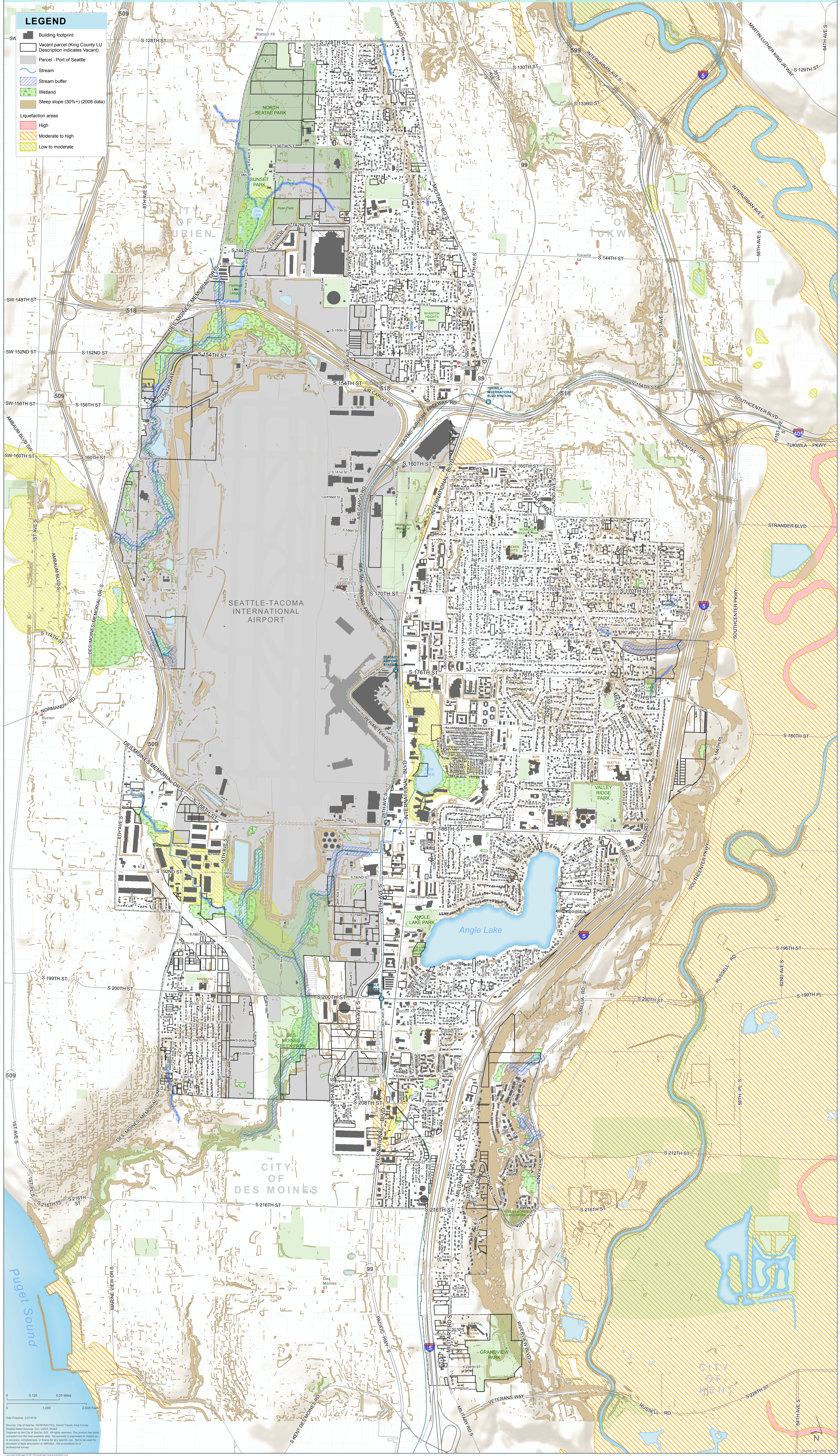


CRITICAL AREAS AND VACANT LANDS



LEGEND

- Building footprint
- Vacant parcel (King County LU Description indicates Vacant)
- Parcel - Port of Seattle
- Stream
- Stream buffer
- Wetland
- Steep slope (30%+) (2006 data)
- Liquefaction areas
 - High
 - Moderate to high
 - Low to moderate



0 0.125 0.25 Miles
1,000 2,000 Feet
Date Prepared: 2/27/2018
Sources: City of SeaTac, HERE/NAVTEQ, Sound Transit, King County
Prepared by: City of SeaTac, Inc., LEIS, NOAA.
This product has been prepared from the best available data. No warranty is expressed or implied as to accuracy, completeness, or fitness for any specific use. This map is not for purposes of legal description or definition. Not a substitute for a professional survey.