

Military Road S - South of S 204th Street: Urban Low Parcel Descriptions

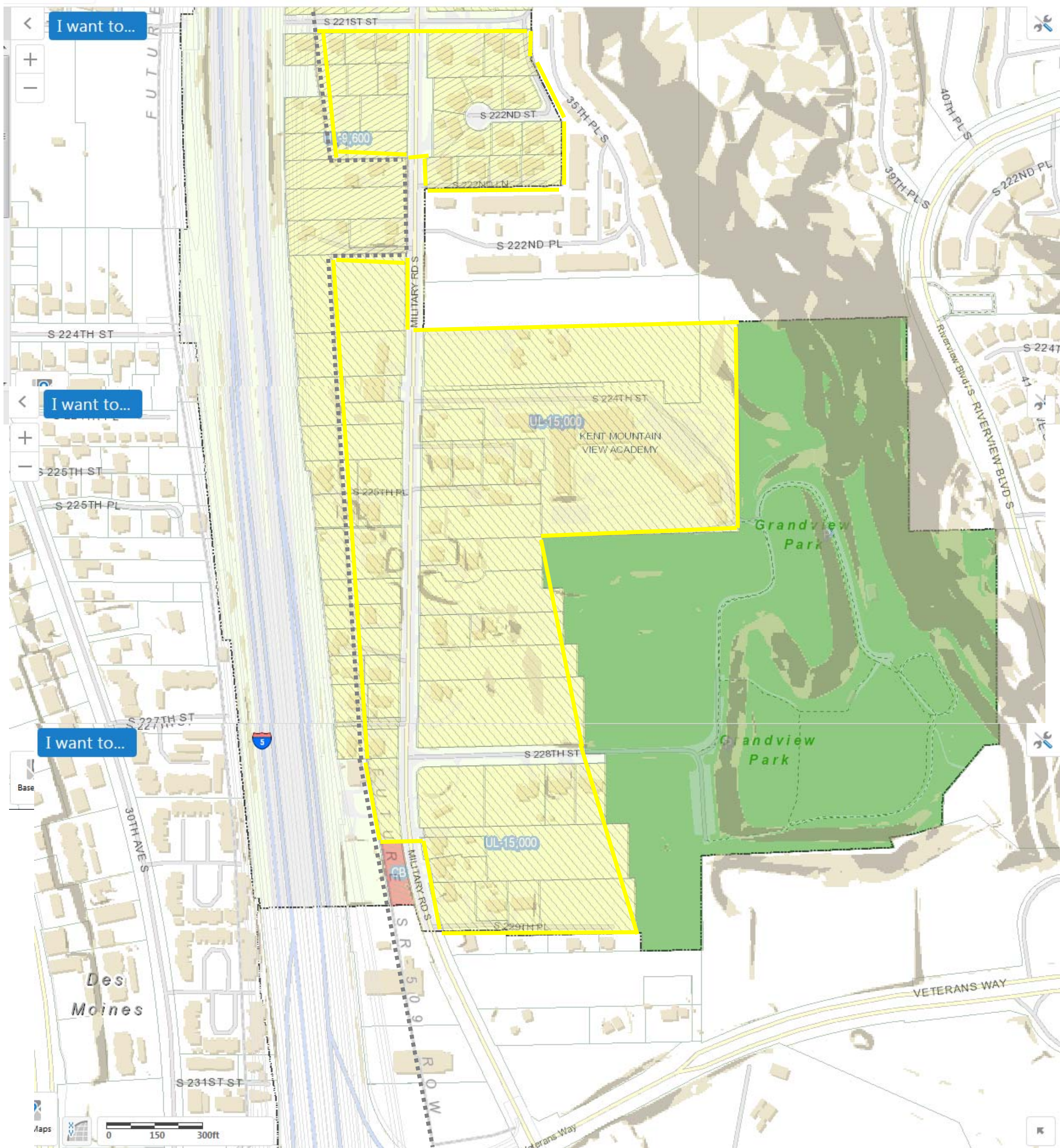
S 204th – S 211th	WEST of Military	EAST* (*Significant site constraints on most parcels)
Total # of Parcels	19	16
Location/Context	UL parcels btn I-5 & Military	UL parcels btn Military & UM zone
Vacant	0	3* (*2 are under 50' and owned by adjacent parcel & remaining parcel 40% or more grade for whole parcel)
40% Grade or more over ½ +	0	16* (*1 completely)
SR 509 ROW Impact	0	0
Zone	UL-9,600	UL 15,000
Sewer	Midway Sewer	Midway Sewer

S 211th – S 221st	WEST	EAST
Total # of Parcels	61 (61+15=76, if include deducted 509 ROW parcels - some partial with partial takes are included in 61 counted as "total")	45
Location/Context	UL parcels btn 509 ROW & Military	UL parcels btn Military and top of ridge, 37 th PI, 34 th Ave S
Vacant	1	2* (*1 almost completely constrained by steep slope)
40% Grade or more over ½ +	0	4* (*1 vacant lot owned by adjacent property owner almost completely)
SR 509 ROW Impact	27	0
Zone	UL-9,600	UL 9,600: 3 parcels UL 15,000: 42 parcels
Sewer	Unsewered: 211 th -216 th (35 parcels) Kent Sewer: 216 th -221 st	Unsewered: 211 th -216 th (23 parcels) Kent Sewer: 216 th -221 st

S 221st - S 229th PI	WEST	EAST
Total # of Parcels	27	40
Location/Context	UL parcels btn I-5 or SR509 ROW & Military	UL parcels btn Military and eastern City border
Vacant	3* (*There are 2 add'l vacant lots but they are owned by PSE)	3
40% Grade or more over ½ +	0	0
SR 509 ROW Impact	10	0
Zone	UL 9,600: 10 parcels UL 15,000: 17 parcels	UL 9,600: 14 parcels UL 15,000: 26 parcels
Sewer	Kent Sewer	Kent Sewer

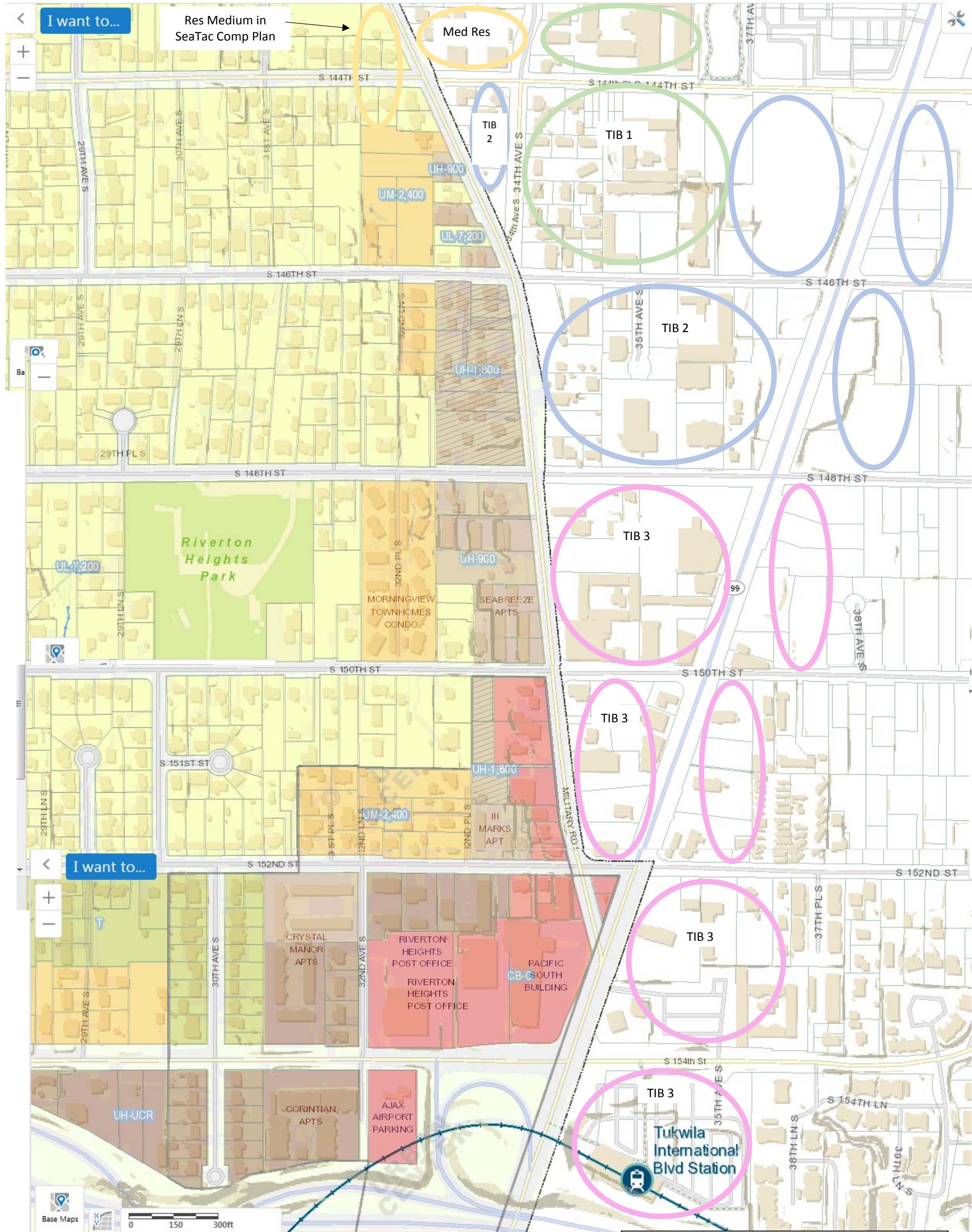
Total # of Parcels (S204th – S 229th PI) = 107

MAP #S3: 221st – 229th



- Map Includes Zoning, Critical Areas, SR509 ROW:**
- Dark brown=40%+ grade
 - Light brown=30%-40% grade
 - Wetlands & Streams
- Future SR509 Right-of-Way

MAP #N1: S 144th – S 154th



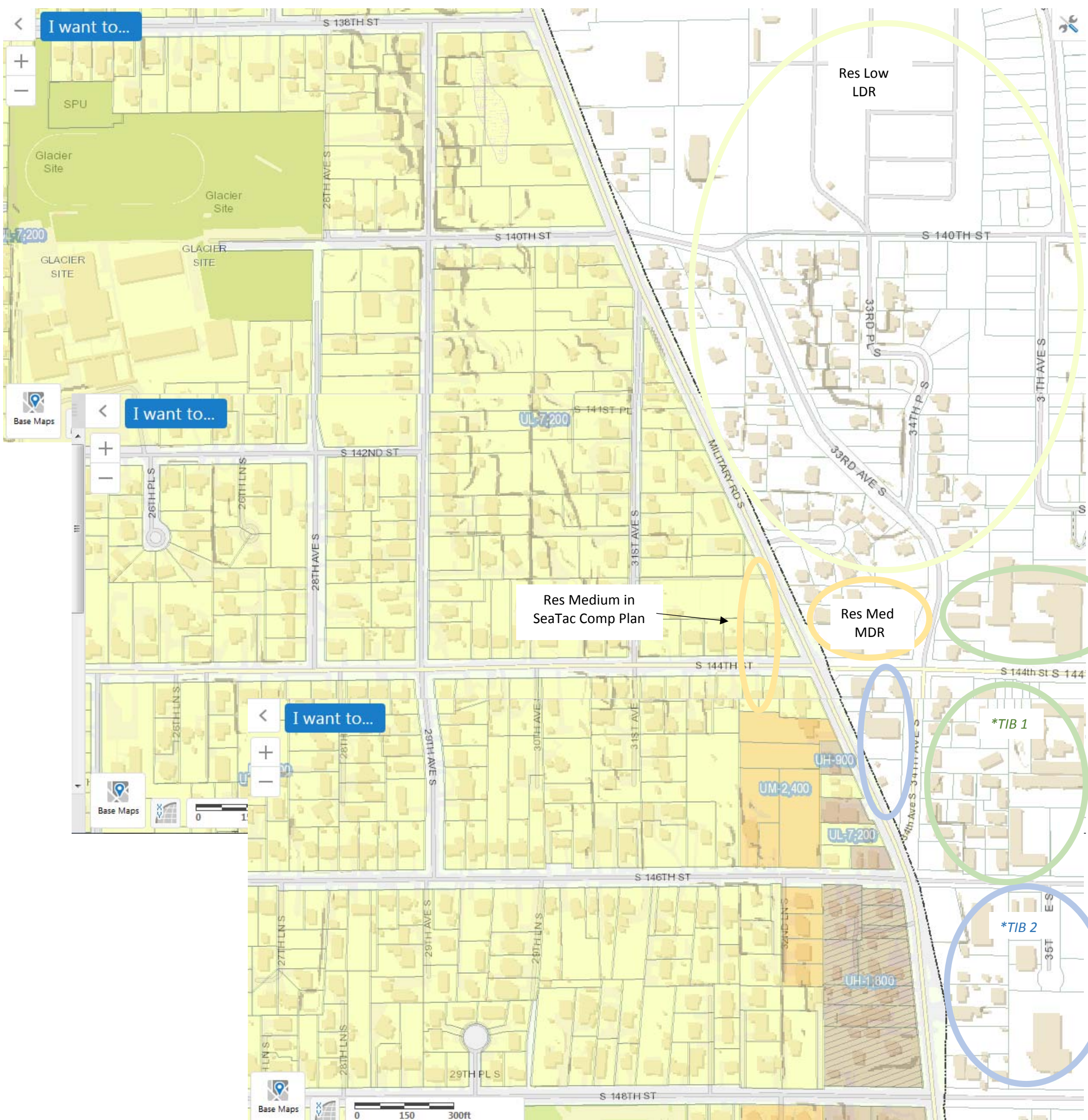
Map Includes Zoning & Topography/Elevations:

- Dark brown=40%+ grade
- Light brown=30%-40% grade
- Wetlands & Streams

Note: Tukwila Proposed New Zones:

- *TIB 3: Similar to Regional/Commercial High
- *TIB 2: Similar to Commercial Medium/Mixed Use
- *TIB 3: Similar to Commercial Low/Mixed Use

MAP #N2: S 138th – S 148th



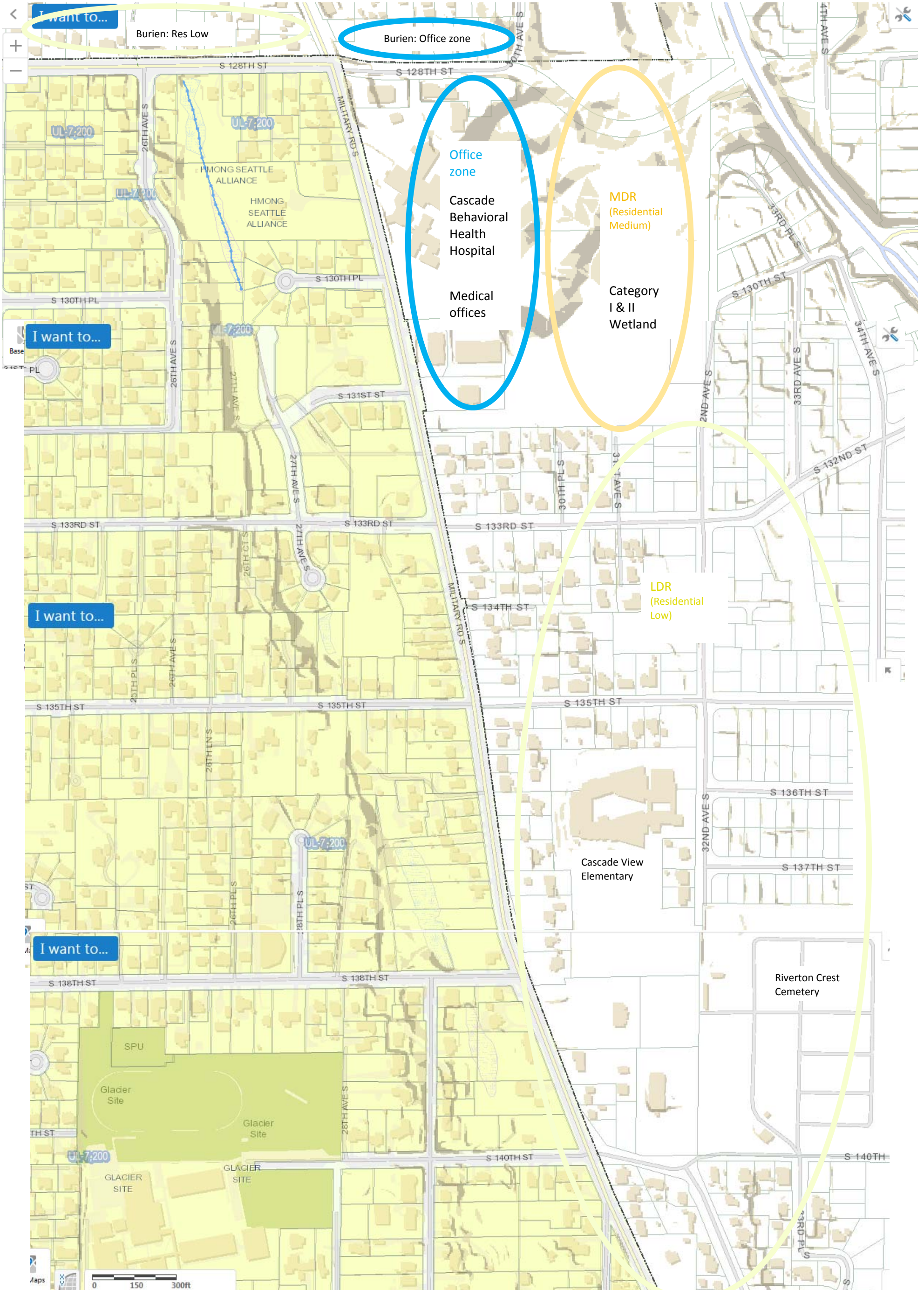
Map Includes Zoning & Topography/Elevations:

- Dark brown=40%+ grade
- Light brown=30%-40% grade
- Wetlands & Streams

Note: Tukwila Proposed New Zones:

- *TIB 2: Similar to Commercial Medium/Mixed Use
- *TIB 3: Similar to Commercial Low/Mixed Use
- *MDR : Medium Density Residential
- *LDR: Lower Density Residential

MAP #N3: S 128th – S 140th



Map Includes Zoning & Topography/Elevations:

- Dark brown=40%+ grade
- Light brown=30%-40% grade
- Wetlands & Streams

Note: Tukwila Zones:

- *O: Office
- *MDR : Medium Density Residential
- *LDR: Lower Density Residential