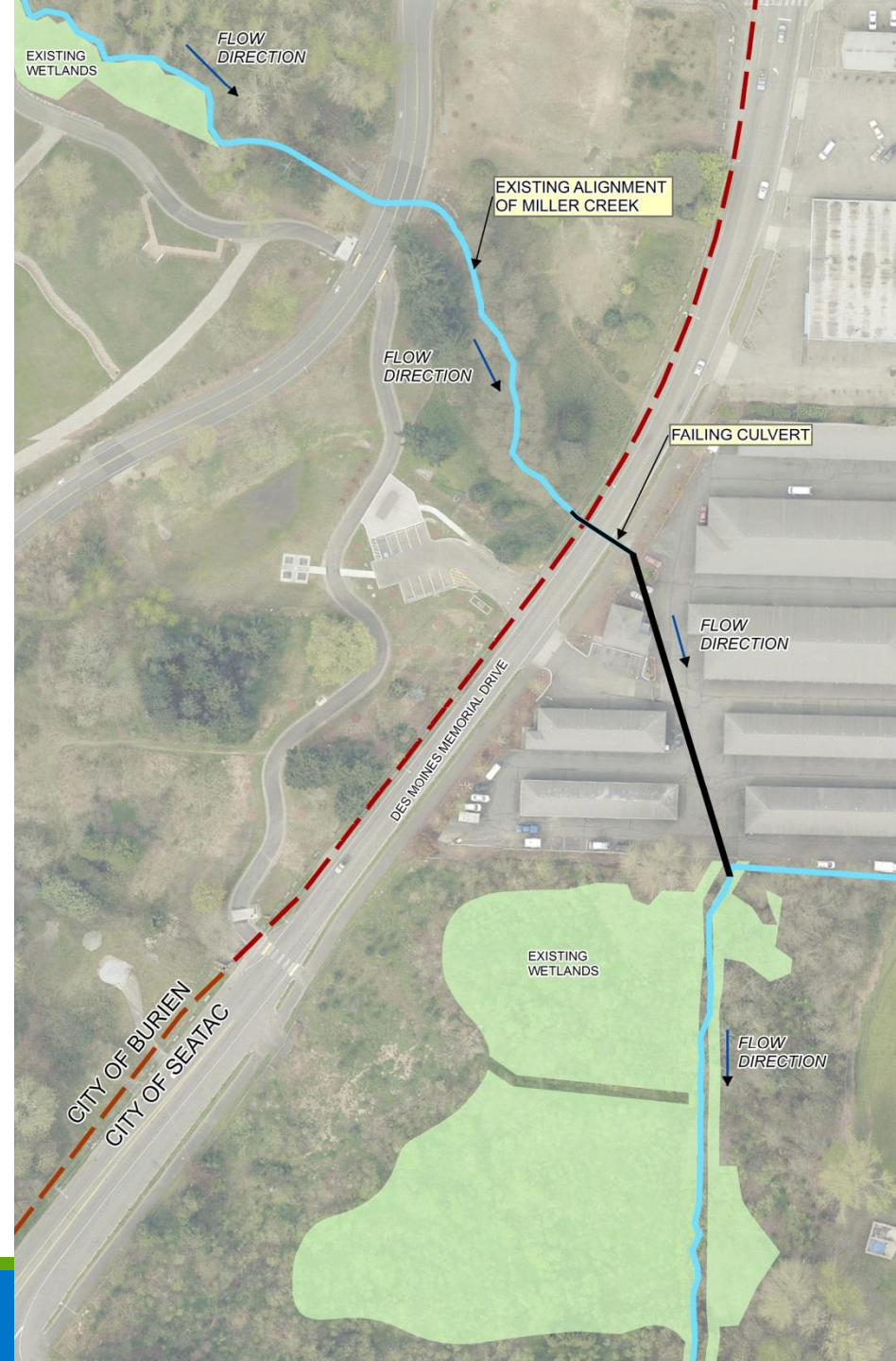


# Miller Creek Realignment Project

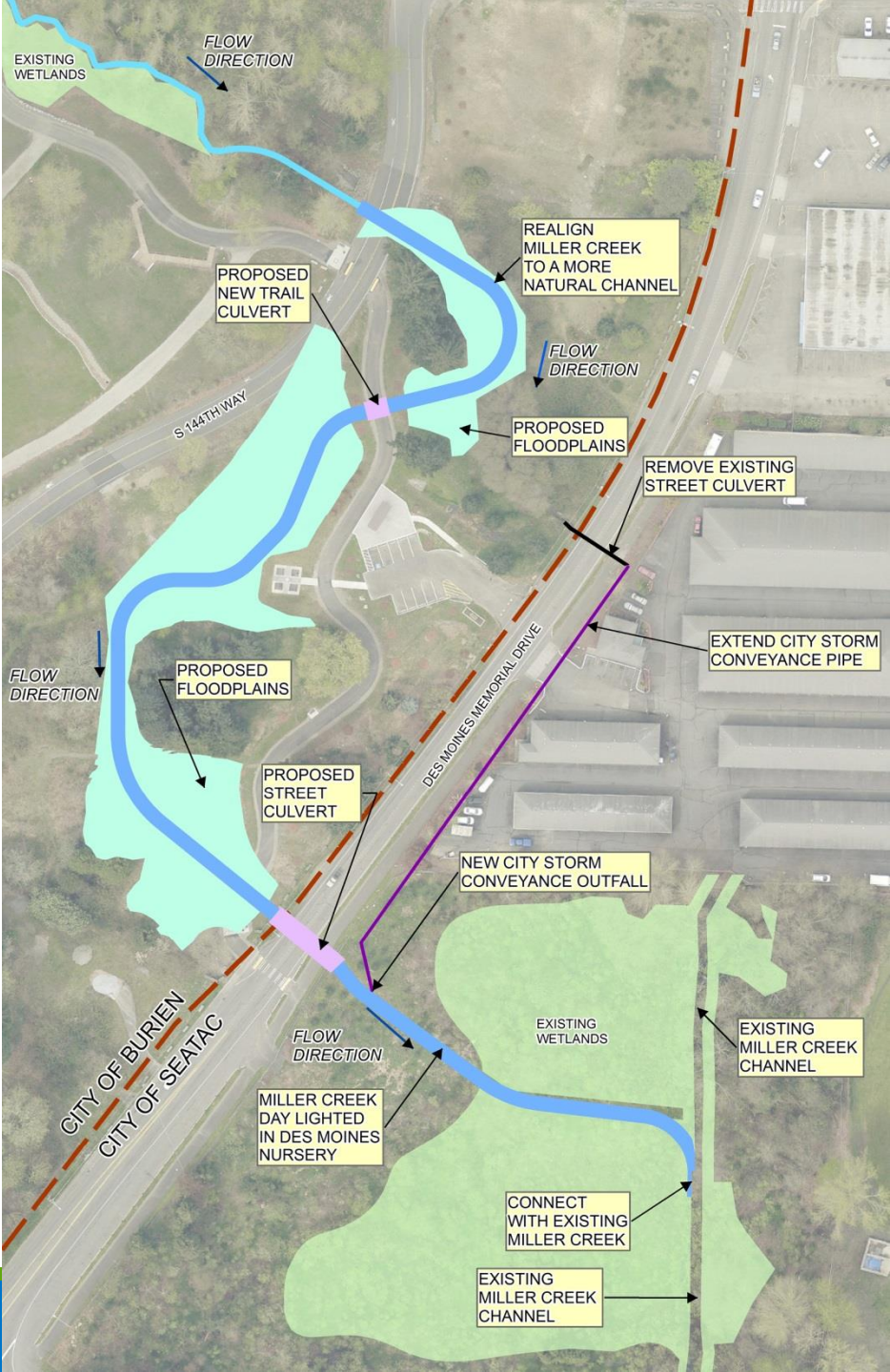
---

OCTOBER 24, 2017

# Existing Condition



# Miller Creek Realignment



# Estimated Project Costs

---

Project Phase	Proposed Miller Creek Realignment Project	Des Moines Memorial Drive Culvert Replacement Only
Construction	\$2,600,000	\$900,000
Design/Permitting/Admin	\$560,000	\$290,000
Construction Management	\$400,000	\$180,000
<b>TOTAL</b>	<b>\$3,560,000</b>	<b>\$1,370,000</b>

# Project Funding

---

Funding Sources	Proposed Miller Creek Realignment Project	Des Moines Memorial Drive Culvert
City of SeaTac	\$500,000	\$1,370,000
City of Burien	\$565,000	-
Port of Seattle Pilot Program	\$560,000	-
Potential Grant Partners <i>(Ecology, King County)</i>	\$1,935,000	Unknown
<b>TOTAL</b>	<b>\$3,560,000</b>	<b>\$1,370,000</b>

# Project Benefits

---

- Daylights about 340 feet of Miller Creek
- Improves water quality
- Improves riparian environment, stream habitat and fish passage
- Creates floodplain and flattens creek to reduce high flows
- Sustainable design

# Project Benefits

---

- Resolves risks associated with two failing culverts
- Leverages funding from the Port for design
- Partnership required to achieve project goals
- Achieves priorities of Miller-Walker Basin Partnership

# Next Steps

---

- Seek partnership with City of SeaTac
- Secure grant funding
- Implement vision



# Questions ?

---