



South 200th Link Extension

Construction Alert

March 11, 2016

Traffic shift on 28th Avenue S begins as early as Friday, March 25 to restore medians

Beginning as early as Friday, March 25, motorists will experience a traffic shift along 28th Avenue S between 26th Avenue S and S 188th Street in SeaTac. Two-way traffic will be maintained on 28th Avenue S through the area.

Crews are nearing completion of concrete roadwork and restoration of driveways along 28th Avenue S. One of the final steps in roadway restoration is restoring the medians. Both lanes of traffic will be shifted temporarily to provide a safe work zone at the center median. Crews will be installing new curb and landscaping in various areas.

This work is anticipated to take approximately two months to complete. Crews plan to fully re-open both sides of 28th Avenue S by summer 2016. A future construction alert will be distributed prior to the road re-opening.

Getting around

Traffic lanes will be shifted during this work. Two-way traffic will be maintained. Please expect travel delays.

Local access to hotels, businesses, and residences will remain open during construction. Please look for signage to help direct you to your destination.

South 200th Link Extension

Opening in 2016 will be quick, all-day Link service between Angle Lake Station and Sea-Tac Airport, downtown Seattle and the University of Washington.

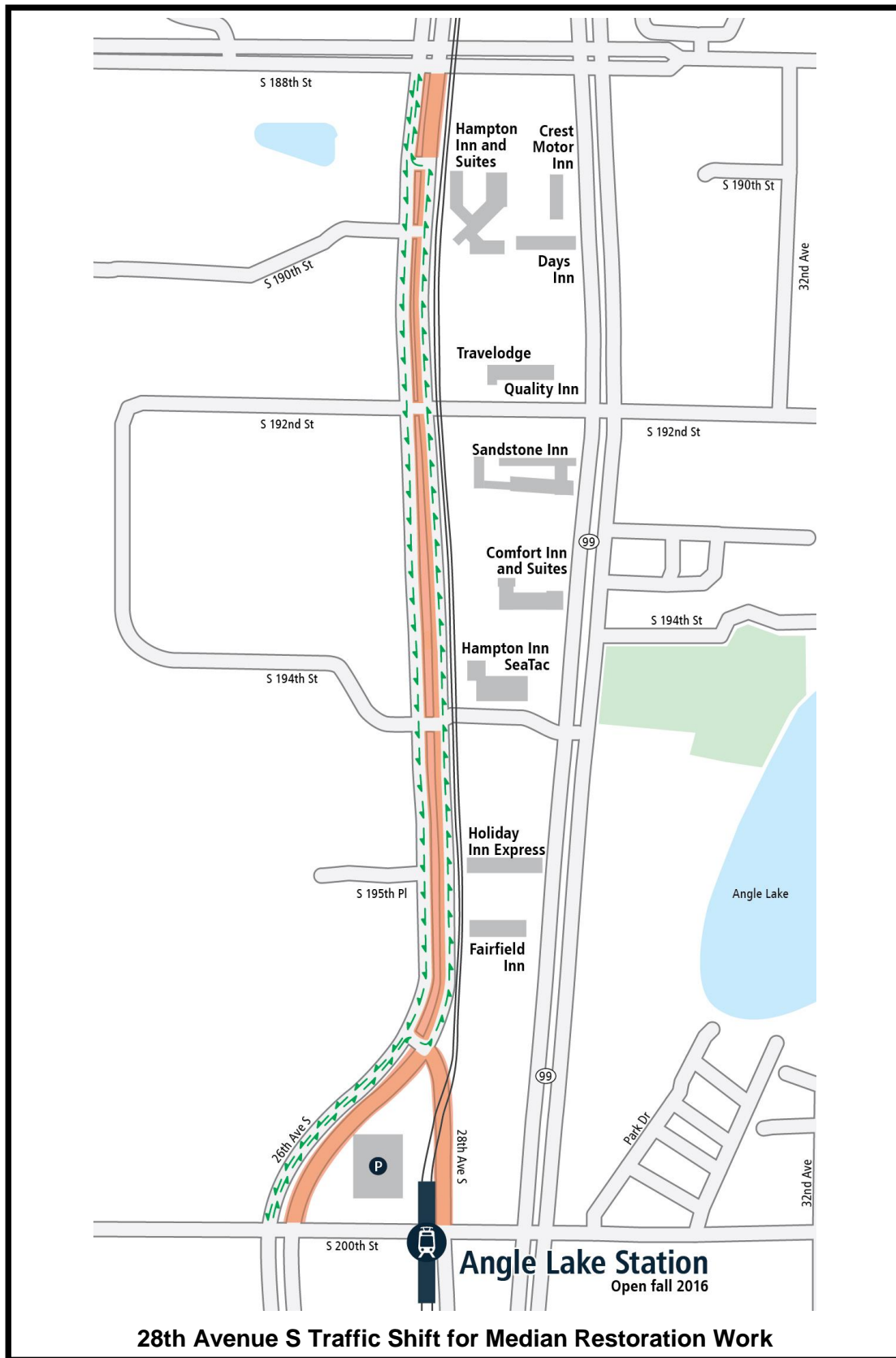
Contact:

Paige Cureton
206-903-7032
paige.cureton@soundtransit.org

Project website: soundtransit.org/S200thstreet

24-Hour construction hotline: 1-888-298-2395

- Please refer to the map on the reverse side for more information. -



Sound Transit plans, builds and operates regional transit systems and services to improve mobility for Central Puget Sound. For information about Sound Transit projects or services, visit us online at www.soundtransit.org or call 1-800-201-4900 / TTY Relay: 711. For information in alternative formats, call 1-800-201-4900 / TTY Relay: 711 or e-mail accessibility@soundtransit.org.