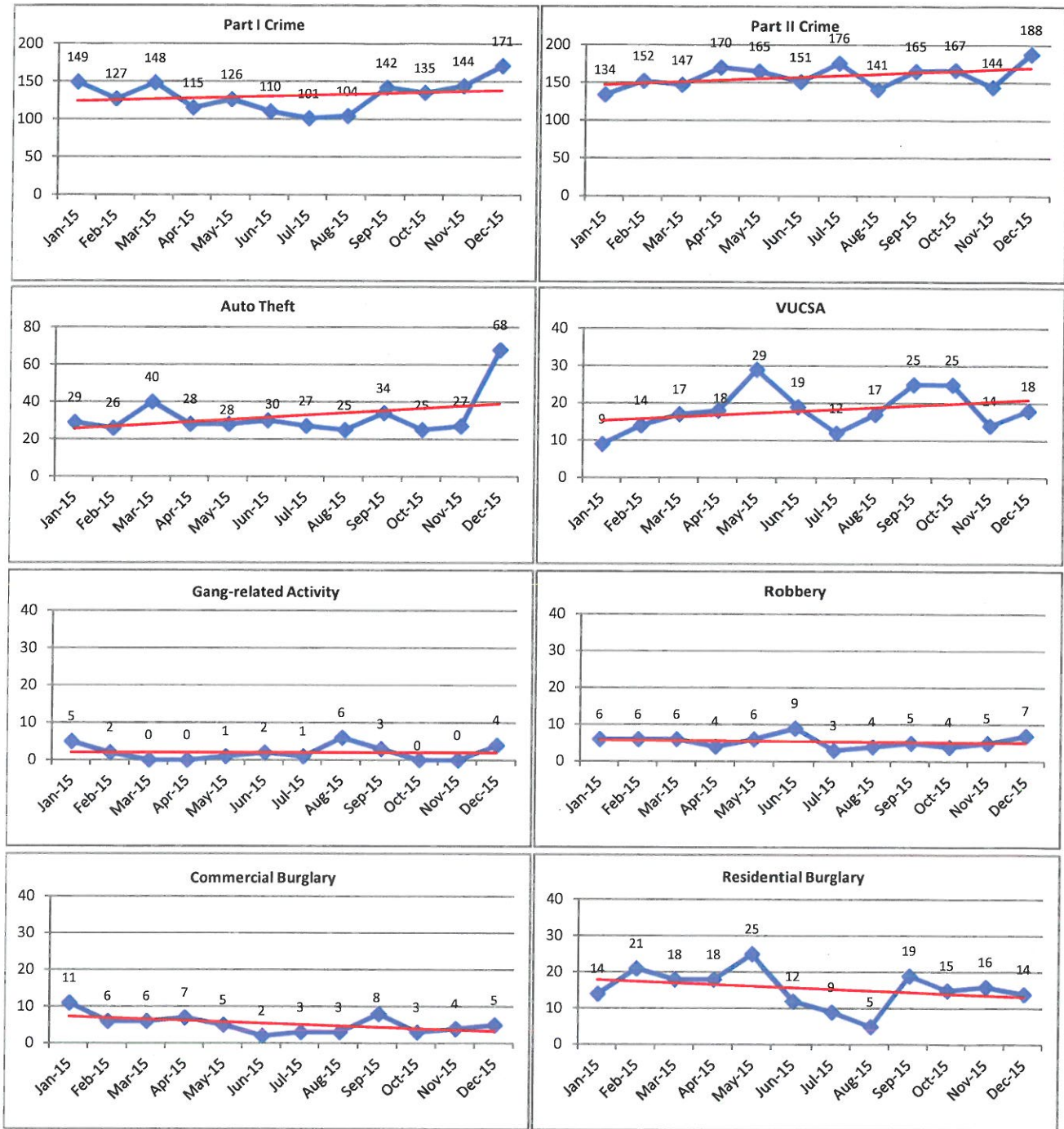


City of SeaTac Crime Trends January 2015 - December 2015



NOTES:

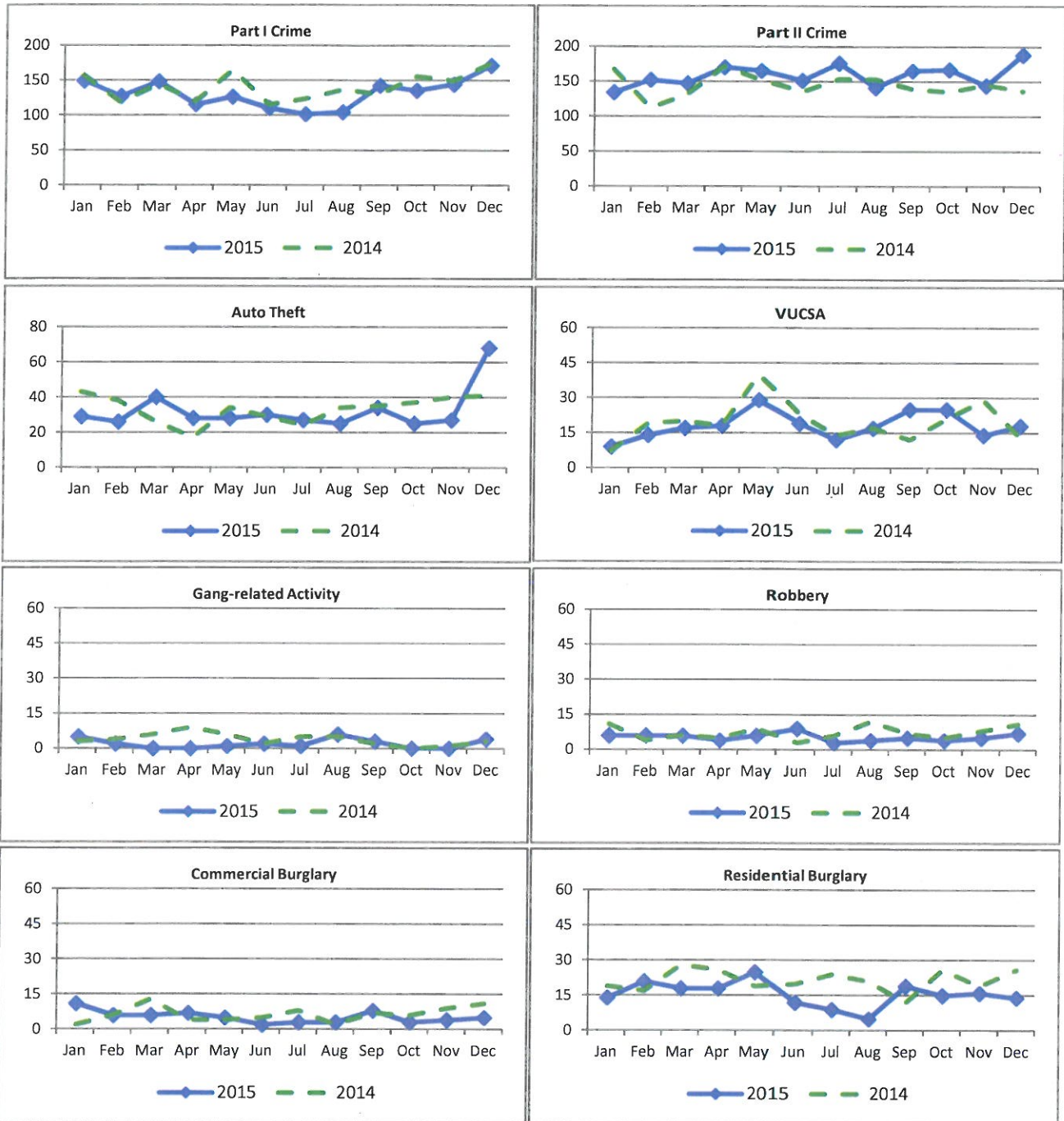
Numbers are estimates based on CAD (Computer Aided Dispatch) data (mainly patrol activity, including 911 calls, officer-initiated activity, etc.)

VUCSA = Violation of Uniform Controlled Substances Act

Part I crimes include: Homicide, Aggravated Assault, Robbery, Rape, Burglary, Larceny, Vehicle Theft, Arson

Part II crimes include: Other Assaults, Frauds, Poss. Stolen Property, Vandalism, Vice, Sex Offenses, Controlled Substance Violations, Family/Juvenile Offenses, DUI, Concealed Weapon, Fight Disturbance, Trespass, Vandalism, Public Hazard/Nuisance

City of SeaTac Crime Trends 2014 - 2015



NOTES:

Numbers are estimates based on CAD (Computer Aided Dispatch) data (mainly patrol activity, including 911 calls, officer-initiated activity, etc.)

VUCSA = Violation of Uniform Controlled Substances Act

Part I crimes include: Homicide, Aggravated Assault, Robbery, Rape, Burglary, Larceny, Vehicle Theft, Arson

Part II crimes include: Other Assaults, Frauds, Poss. Stolen Property, Vandalism, Vice, Sex Offenses, Controlled Substance Violations, Family/Juvenile Offenses, DUI, Concealed Weapon, Fight Disturbance, Trespass, Vandalism, Public Hazard/Nuisance



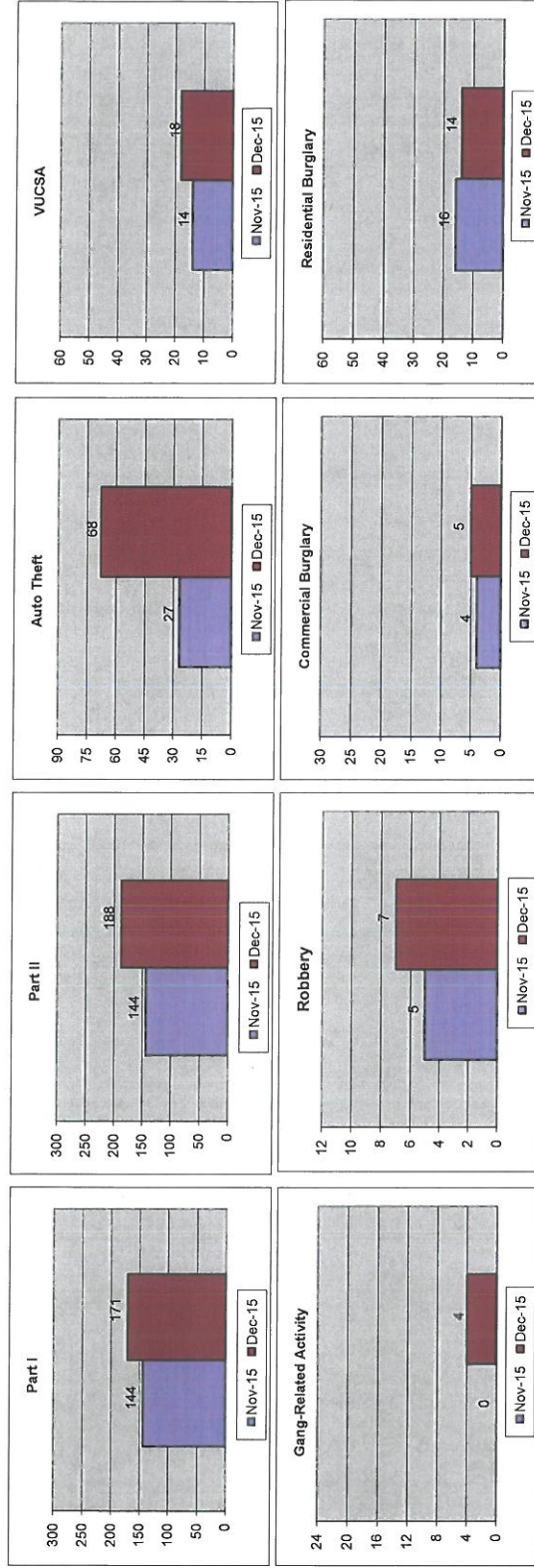
**King County Sheriff's Office
Selected Activity Counts for SeaTac
November 2015 vs. December 2015***



	Part I			Part II			VUCSA			Gang-Related Activity		
	Nov-15	Dec-15	% Chg	Nov-15	Dec-15	% Chg	Nov-15	Dec-15	% Chg	Nov-15	Dec-15	% Chg
SeaTac	144	171	18.8%	144	188	30.6%	14	18	28.6%	0	4	N/A

	Robbery			Comm. Burglary			Res. Burglary		
	Nov-15	Dec-15	% Chg	Nov-15	Dec-15	% Chg	Nov-15	Dec-15	% Chg
SeaTac	5	7	40.0%	4	5	25.0%	16	14	-12.5%

*Numbers are estimates based on CAD data.



Current Trends or Series:

Both Part I & Part II crime increased (19% & 31% respectively). Part II crime increase mainly due to Fraud, Trespass, & Mail Theft. December 2015 has the highest monthly Part II number since June 2009.

Auto theft increased significantly & is above the 10-year average (36). December 2015 has the highest monthly number since September 2006.

NOTES:
VUCSA = Violation of Uniform Controlled Substances Act
CAD = mainly patrol activity, including 911 calls, officer-initiated activity, etc.
Part I crimes include: Homicide, Aggravated Assault, Robbery, Rape, Burglary, Larceny, Vehicle Theft, Arson

Part II crimes include: Other Assaults, Frauds, Poss. Stolen Property, Vandalism, Vice, Sex Offenses, Controlled Substance Violations, Family/Juvenile Offenses, DUI, Concealed Weapon, Flight Disturbance, Trespass, Vandalism, Public Hazard/Nuisance



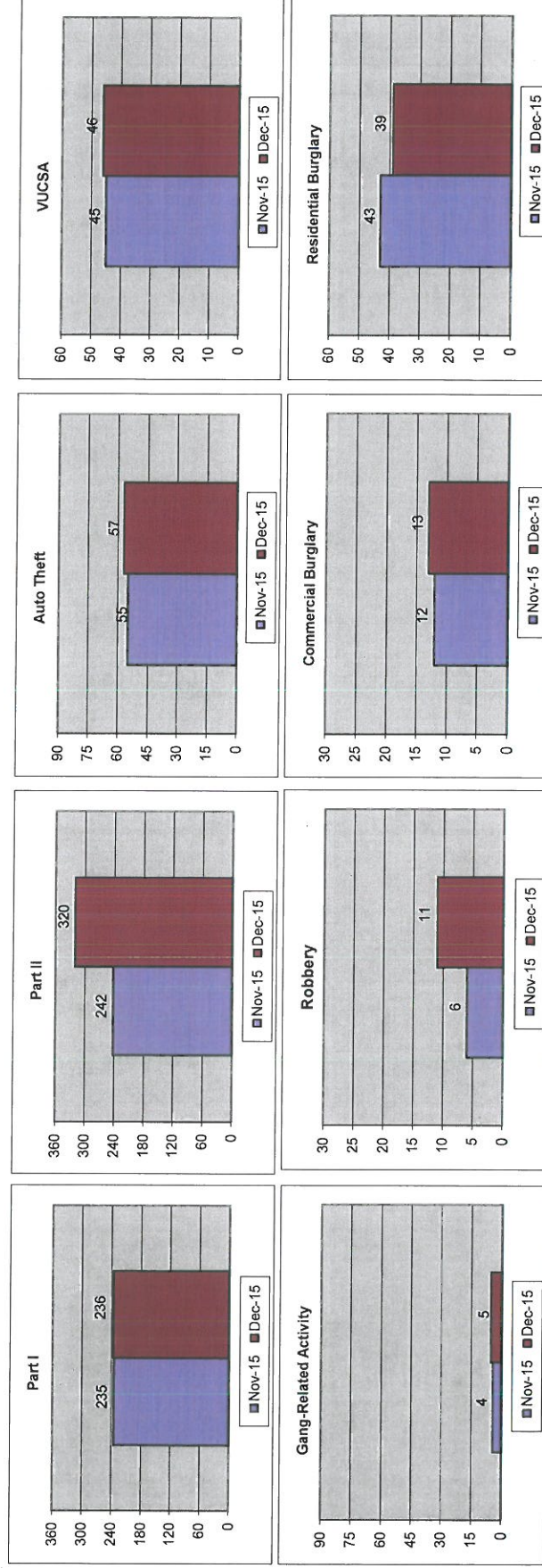
**King County Sheriff's Office
Selected Activity Counts for Burien
November 2015 vs. December 2015***



	Part I			Part II			Auto Theft			VUCSA			Gang-Related Activity		
	Nov-15	Dec-15	% Chg	Nov-15	Dec-15	% Chg	Nov-15	Dec-15	% Chg	Nov-15	Dec-15	% Chg	Nov-15	Dec-15	% Chg
Burien	235	236	0.4%	242	320	32.2%	55	57	3.6%	45	46	2.2%	4	5	25.0%

	Robbery			Comm. Burglary			Res. Burglary		
	Nov-15	Dec-15	% Chg	Nov-15	Dec-15	% Chg	Nov-15	Dec-15	% Chg
Burien	6	11	83.3%	12	13	8.3%	43	39	-9.3%

*Numbers are estimates based on CAD data.



Current Trends or Series:

Part I crime increased slightly; however, Part II crime increased 32%. Just over half of the Part II crime increase due to Trespass, Assault 4, & Juvenile Runaway.

Robbery up from 6 to 11 & is above the 5-year average (7).