

Turning Movement Volume Summary

Project: 14041 SeaTac
 Scenario: PM Peak Hour

Project Years:		Annual Growth Rates:	
Starts	2014	Counts to Existing (2014)	1.0%
Finishes	2035	Existing (2014) to Baseline (2035)	2.0%

Volume changed for balancing

 = HOV volume within Thru volume
 = HOV volume within Thru volume
 = HOV volume within Thru volume
 = HOV volume within Thru volume
 = HOV volume within Thru volume
 = HOV volume within Thru volume

		Actual Counts Synchro code: 10/10/2014	Existing (2014) Synchro code: 1/1/2014	(S1) 2025 - No 509 Synchro code: 1/2035	(S2.1) 2025 Baseline Synchro code: 1/2035	(S4) 2035 Baseline noSBL Synchro code: 1/2035	(S5.1) 2035 Full Build Synchro code: 1/2035	(S6.1) 2035 Baseline wSAE Synchro code: 1/2035
North-South Street East-West Street 30 mph 30 mph Count Date: 5/21/2014 Count Source: IDAX %HV: EB 28%, WB 13%, NB 10%, SB 4% PHF: 0.95 Peak Hour Used: 1615 To 1715 Use Military Time: 4:00 PM = 1600		International Blvd S 182nd St (Arrival Dr) 2014 N 219 279 1,545 961 244 1,423 887 71 1,322 26 12 0 2,695 5 208 139 804 18 15	International Blvd S 182nd St (Arrival Dr) 2014 N 220 280 1,545 965 245 1,420 885 70 1,320 25 10 0 2,695 5 210 140 805 20 0	International Blvd S 182nd St (Arrival Dr) 2035 N 325 520 2,160 1,460 370 1,905 1,385 110 1,735 25 10 0 3,915 5 410 175 1,265 20 0	International Blvd S 182nd St (Arrival Dr) 2035 N 0 0 1,560 1,170 270 1,570 1,160 0 1,545 25 10 0 2,765 0 0 0 1,150 20 0	International Blvd S 182nd St (Arrival Dr) 2035 N 0 0 1,870 1,415 375 1,880 1,405 0 1,865 25 10 0 3,320 0 0 0 1,395 20 0	International Blvd S 182nd St (Arrival Dr) 2035 N 0 0 1,880 1,375 380 1,890 1,365 0 1,865 25 10 0 3,290 0 0 0 1,355 20 0	International Blvd S 182nd St (Arrival Dr) 2035 N 0 0 1,875 1,365 380 1,885 1,355 0 1,860 25 10 0 3,275 0 0 0 1,345 20 0
				% Increase = 45.3%	% Increase = 2.6%	% Increase = 23.2%	% Increase = 22.1%	% Increase = 21.5%
North-South Street East-West Street Count Date: 10/19/2011 Count Source: T2 %HV: EB 3%, WB 5%, NB 17%, SB 18% PHF: 0.96 Peak Hour Used: 1630 To 1730 Use Military Time: 4:00 PM = 1600		28th Ave S S 188th St 2011 N 1,264 1,115 171 108 311 199 147 1,072 28 1,157	28th Ave S S 188th St 2011 N 905 1,455 180 110 325 195 150 885 705 30 1,495	28th Ave S S 188th St 2035 N 1,335 1,750 525 320 325 195 150 985 155 0	28th Ave S S 188th St 2035 N 1,060 1,085 1,200 495 1,210 740 375 1,110 630 105 900	28th Ave S S 188th St 2035 N 1,335 1,290 1,340 695 1,315 840 375 1,320 795 150 1,105	28th Ave S S 188th St 2035 N 1,200 1,040 760 490 740 610 320 1,240 760 160 940	28th Ave S S 188th St 2035 N 1,360 1,280 790 570 700 595 305 1,310 840 165 1,115
				% Increase = 32.5%	% Increase = 40.2%	% Increase = 66.1%	% Increase = 26.2%	% Increase = 38.8%
North-South Street East-West Street 30 mph 30 mph Count Date: 5/21/2014 Count Source: IDAX %HV: EB 4%, WB 4%, NB 5%, SB 6% PHF: 0.95 Peak Hour Used: 1615 To 1715 Use Military Time: 4:00 PM = 1600		International Blvd S 188th St 2014 N 861 1,532 1,789 975 196 1,590 868 141 1,063 386 213 421 211 4,942	International Blvd S 188th St 2014 N 860 1,530 1,790 975 195 1,590 870 140 1,065 385 215 420 210 4,940	International Blvd S 188th St 2035 N 1,290 1,630 2,070 1,440 195 2,230 1,395 250 1,415 565 330 675 235 6,540	International Blvd S 188th St 2035 N 1,110 900 1,410 1,635 190 1,510 1,030 175 935 400 255 575 270 5,145	International Blvd S 188th St 2035 N 1,320 1,105 1,605 1,700 245 1,835 1,290 240 1,010 585 305 705 295 5,945	International Blvd S 188th St 2035 N 1,240 940 1,525 1,585 255 1,835 1,240 255 1,085 495 315 725 310 5,710	International Blvd S 188th St 2035 N 1,310 1,115 1,665 1,635 285 1,845 1,245 245 1,075 525 330 700 295 5,920
				% Increase = 32.3%	% Increase = 4.1%	% Increase = 20.3%	% Increase = 15.5%	% Increase = 19.8%

Actual Counts

Existing (2014)

(S1) 2025 - No 509

(S2.1) 2025 Baseline

(S4) 2025 Baseline noSBL

(S5.1) 2025 Full Build

(S6.1) 2025 Baseline wSAE

Synchro code: 10/10/2014

Synchro code: 1/1/2014

Synchro code: 1/2035

Synchro code: 1/2035

Synchro code: 1/2035

Synchro code: 1/2035

Synchro code: 1/2035

Location	Actual Counts	Existing (2014)	(S1) 2025 - No 509	(S2.1) 2025 Baseline	(S4) 2025 Baseline noSBL	(S5.1) 2025 Full Build	(S6.1) 2025 Baseline wSAE																				
North-South Street East-West Street International Blvd S 192nd St	<p>Count Date: 5/21/2014</p> <p>Count Source: IDAX</p> <table border="1"> <tr><th>EB</th><th>WB</th><th>NB</th><th>SB</th><th>Total</th></tr> <tr><td>6%</td><td>1%</td><td>5%</td><td>3%</td><td>0.96</td></tr> </table> <p>PHF: 0.96</p> <p>Peak Hour Used: 1615 To 1715</p>	EB	WB	NB	SB	Total	6%	1%	5%	3%	0.96	<p>Count Date: 5/21/2014</p> <p>Count Source: IDAX</p> <table border="1"> <tr><th>EB</th><th>WB</th><th>NB</th><th>SB</th><th>Total</th></tr> <tr><td>6%</td><td>1%</td><td>5%</td><td>3%</td><td>0.96</td></tr> </table> <p>PHF: 0.96</p> <p>Peak Hour Used: 1615 To 1715</p>	EB	WB	NB	SB	Total	6%	1%	5%	3%	0.96					
EB	WB	NB	SB	Total																							
6%	1%	5%	3%	0.96																							
EB	WB	NB	SB	Total																							
6%	1%	5%	3%	0.96																							
North-South Street East-West Street 26th Ave S S 200th St	<p>Count Date: 5/21/2014</p> <p>Count Source: IDAX</p> <table border="1"> <tr><th>EB</th><th>WB</th><th>NB</th><th>SB</th><th>Total</th></tr> <tr><td>1%</td><td>6%</td><td>20%</td><td>3%</td><td>0.94</td></tr> </table> <p>PHF: 0.94</p> <p>Peak Hour Used: 1645 To 1745</p> <p>Use Military Time: 4:00 PM = 1600</p>	EB	WB	NB	SB	Total	1%	6%	20%	3%	0.94																
EB	WB	NB	SB	Total																							
1%	6%	20%	3%	0.94																							
North-South Street East-West Street International Blvd S 200th St	<p>Count Date: 5/21/2014</p> <p>Count Source: IDAX</p> <table border="1"> <tr><th>EB</th><th>WB</th><th>NB</th><th>SB</th><th>Total</th></tr> <tr><td>2%</td><td>4%</td><td>3%</td><td>2%</td><td>0.98</td></tr> </table> <p>PHF: 0.98</p> <p>Peak Hour Used: 1645 To 1745</p> <p>Use Military Time: 4:00 PM = 1600</p>	EB	WB	NB	SB	Total	2%	4%	3%	2%	0.98																
EB	WB	NB	SB	Total																							
2%	4%	3%	2%	0.98																							
North-South Street East-West Street International Blvd S 208th St	<p>Count Date: 5/21/2014</p> <p>Count Source: IDAX</p> <table border="1"> <tr><th>EB</th><th>WB</th><th>NB</th><th>SB</th><th>Total</th></tr> <tr><td>8%</td><td>1%</td><td>3%</td><td>2%</td><td>0.96</td></tr> </table> <p>PHF: 0.96</p> <p>Peak Hour Used: 1630 To 1730</p> <p>Use Military Time: 4:00 PM = 1600</p>	EB	WB	NB	SB	Total	8%	1%	3%	2%	0.96																
EB	WB	NB	SB	Total																							
8%	1%	3%	2%	0.96																							

Actual Counts

Existing (2014)
ROUNDED to 5

(S1) 2025 - No 509

(S2.1) 2025 Baseline

(S4) 2025 Baseline noSBL

(S5.1) 2025 Full Build

(S6.1) 2025 Baseline wSAE

Synchro code: 10/10/2014

Synchro code: 1/1/2014

Synchro code: 1/2035

Synchro code: 1/2035

Synchro code: 1/2035

Synchro code: 1/2035

Synchro code: 1/2035

North-South Street East-West Street	2014	2014	2035	2035	2035	2035	2035
North-South Street East-West Street	8 2014 Des Moines Memorial Dr S 188th St	8 2014 Des Moines Memorial Dr S 188th St	8 2035 Des Moines Memorial Dr S 188th St	8 2035 Des Moines Memorial Dr S 188th St	8 2035 Des Moines Memorial Dr S 188th St	8 2035 Des Moines Memorial Dr S 188th St	8 2035 Des Moines Memorial Dr S 188th St
Count Date:	6/5/2014						
Count Source:	IDAX						
%HV	EB 3% WB 7% NB 6% SB 0%						
PHF	0.98						
Peak Hour Used:	From 1615 To 1715						
Use Military Time:	4:00 PM = 1600						
	0						
	1,209 819 2,099 864	1,265 875 2,205 870	1,680 875 2,440 880	1,445 1,295 1,610 770	1,675 1,380 1,750 800	1,485 1,240 1,495 785	1,685 1,385 1,780 800
	1,320 473	1,425 475	1,685 505	1,025 525	1,200 540	960 490	1,195 510
			% Increase = 25.3%	% Increase = -4.3%	% Increase = 8.5%	% Increase = -4.6%	% Increase = 8.6%
North-South Street East-West Street	9 2014 Military Rd S 188th St	9 2014 Military Rd S 188th St	9 2035 Military Rd S 188th St	9 2035 Military Rd S 188th St	9 2035 Military Rd S 188th St	9 2035 Military Rd S 188th St	9 2035 Military Rd S 188th St
Count Date:	6/3/2014						
Count Source:	IDAX						
%HV	EB 3% WB 5% NB 4% SB 1%						
PHF	0.99						
Peak Hour Used:	From 1600 To 1700						
Use Military Time:	4:00 PM = 1600						
	0						
	604 846 1,333 604	605 845 1,300 605	840 1,185 1,720 400	590 790 1,605 210	680 940 1,805 250	660 875 1,755 200	655 895 1,755 240
	1,512 118	1,480 115	1,970 195	1,860 160	2,100 205	2,045 195	2,045 200
			% Increase = 30.0%	% Increase = 8.0%	% Increase = 22.8%	% Increase = 17.8%	% Increase = 19.2%
North-South Street East-West Street	10 2014 I-5 SB Ramp S 188th St	10 2014 I-5 SB Ramp S 188th St	10 2035 I-5 SB Ramp S 188th St	10 2035 I-5 SB Ramp S 188th St	10 2035 I-5 SB Ramp S 188th St	10 2035 I-5 SB Ramp S 188th St	10 2035 I-5 SB Ramp S 188th St
Count Date:	6/3/2014						
Count Source:	IDAX						
%HV	EB 4% WB 5% NB 0% SB 15%						
PHF	0.94						
Peak Hour Used:	From 1630 To 1730						
Use Military Time:	4:00 PM = 1600						
	0						
	840 1,177 1,474 840	850 1,190 1,475 850	1,190 1,535 1,965 1,190	790 1,095 1,860 1,355	950 1,260 2,090 1,330	875 1,215 2,035 1,270	900 1,220 2,035 1,265
	1,350 404	1,350 405	1,675 400	1,370 370	1,610 370	1,645 395	1,635 380
			% Increase = 25.8%	% Increase = 8.9%	% Increase = 20.5%	% Increase = 17.4%	% Increase = 17.8%
North-South Street East-West Street	11 2014 I-5 NB Ramp S 188th St	11 2014 I-5 NB Ramp S 188th St	11 2035 I-5 NB Ramp S 188th St	11 2035 I-5 NB Ramp S 188th St	11 2035 I-5 NB Ramp S 188th St	11 2035 I-5 NB Ramp S 188th St	11 2035 I-5 NB Ramp S 188th St
Count Date:	6/3/2014						
Count Source:	IDAX						
%HV	EB 9% WB 5% NB 10% SB 0%						
PHF	0.94						
Peak Hour Used:	From 1630 To 1730						
Use Military Time:	4:00 PM = 1600						
	0						
	1,190 1,655 1,339 1,190	1,190 1,655 1,350 1,190	1,535 1,920 1,680 1,535	1,095 1,540 1,370 1,095	1,260 1,700 1,610 1,260	1,215 1,700 1,645 1,215	1,220 1,695 1,640 1,220
	1,158 464	1,170 470	1,480 615	1,090 380	1,295 450	1,325 420	1,310 420
			% Increase = 21.9%	% Increase = -4.9%	% Increase = 8.7%	% Increase = 8.9%	% Increase = 8.6%

Actual Counts

Existing (2014)
= HOV volume within Thru volume
ROUNDED to 5

(S1) 2025 - No 509
= HOV volume within Thru volume

(S2.1) 2025 Baseline
= HOV volume within Thru volume

(S4) 2025 Baseline noSBL
= HOV volume within Thru volume

(S5.1) 2025 Full Build
= HOV volume within Thru volume

(S6.1) 2025 Baseline wSAE
= HOV volume within Thru volume

	Synchro code: 10/10/2014	Synchro code: 1/1/2014	Synchro code: 1/2035	Synchro code: 1/2035	Synchro code: 1/2035	Synchro code: 1/2035	Synchro code: 1/2035										
<p>Count Date: 10/18/2011</p> <p>Count Source: TC2 (SeaTac)</p> <table border="1"> <tr><td>EB</td><td>WB</td><td>NB</td><td>SB</td><td>Total</td></tr> <tr><td>1%</td><td>2%</td><td>1%</td><td>0%</td><td>0.96</td></tr> </table> <p>PHF: 0.96</p> <p>Peak Hour Used: 1645 To 1745</p> <p>Use Military Time: 4:00 PM = 1600</p>	EB	WB	NB	SB	Total	1%	2%	1%	0%	0.96	<p>North-South Street East-West Street</p> <p>Des Moines Memorial Dr S 200th St</p> <p>2011</p>	<p>Des Moines Memorial Dr S 200th St</p> <p>2014</p>	<p>Des Moines Memorial Dr S 200th St</p> <p>1/2035</p> <p>% Increase = 11.8%</p>	<p>Des Moines Memorial Dr S 200th St</p> <p>1/2035</p> <p>% Increase = 9.2%</p>	<p>Des Moines Memorial Dr S 200th St</p> <p>1/2035</p> <p>% Increase = 14.1%</p>	<p>Des Moines Memorial Dr S 200th St</p> <p>1/2035</p> <p>% Increase = 5.7%</p>	<p>Des Moines Memorial Dr S 200th St</p> <p>1/2035</p> <p>% Increase = 11.2%</p>
EB	WB	NB	SB	Total													
1%	2%	1%	0%	0.96													
<p>Count Date: 5/3/2014</p> <p>Count Source: IDAX</p> <table border="1"> <tr><td>EB</td><td>WB</td><td>NB</td><td>SB</td><td>Total</td></tr> <tr><td>2%</td><td>5%</td><td>3%</td><td>0%</td><td>0.97</td></tr> </table> <p>PHF: 0.97</p> <p>Peak Hour Used: 1630 To 1730</p> <p>Use Military Time: 4:00 PM = 1600</p>	EB	WB	NB	SB	Total	2%	5%	3%	0%	0.97	<p>North-South Street East-West Street</p> <p>SR 518 WB Off-Ramp S 154th St</p> <p>2014</p>	<p>SR 518 WB Off-Ramp S 154th St</p> <p>2014</p>	<p>SR 518 WB Off-Ramp S 154th St</p> <p>1/2035</p> <p>% Increase = 14.8%</p>	<p>SR 518 WB Off-Ramp S 154th St</p> <p>1/2035</p> <p>% Increase = 2.8%</p>	<p>SR 518 WB Off-Ramp S 154th St</p> <p>1/2035</p> <p>% Increase = 9.3%</p>	<p>SR 518 WB Off-Ramp S 154th St</p> <p>1/2035</p> <p>% Increase = 9.3%</p>	<p>SR 518 WB Off-Ramp S 154th St</p> <p>1/2035</p> <p>% Increase = 9.3%</p>
EB	WB	NB	SB	Total													
2%	5%	3%	0%	0.97													
<p>Count Date: 6/5/2014</p> <p>Count Source: IDAX</p> <table border="1"> <tr><td>EB</td><td>WB</td><td>NB</td><td>SB</td><td>Total</td></tr> <tr><td>4%</td><td>4%</td><td>3%</td><td>3%</td><td>0.95</td></tr> </table> <p>PHF: 0.95</p> <p>Peak Hour Used: 1630 To 1730</p> <p>Use Military Time: 4:00 PM = 1600</p>	EB	WB	NB	SB	Total	4%	4%	3%	3%	0.95	<p>North-South Street East-West Street</p> <p>International Blvd S 154th St</p> <p>2014</p>	<p>International Blvd S 154th St</p> <p>2014</p>	<p>International Blvd S 154th St</p> <p>1/2035</p> <p>% Increase = 19.6%</p>	<p>International Blvd S 154th St</p> <p>1/2035</p> <p>% Increase = 20.2%</p>	<p>International Blvd S 154th St</p> <p>1/2035</p> <p>% Increase = 34.7%</p>	<p>International Blvd S 154th St</p> <p>1/2035</p> <p>% Increase = 35.5%</p>	<p>International Blvd S 154th St</p> <p>1/2035</p> <p>% Increase = 35.7%</p>
EB	WB	NB	SB	Total													
4%	4%	3%	3%	0.95													
<p>Count Date: 6/3/2014</p> <p>Count Source: IDAX</p> <table border="1"> <tr><td>EB</td><td>WB</td><td>NB</td><td>SB</td><td>Total</td></tr> <tr><td>3%</td><td>3%</td><td>2%</td><td>2%</td><td>0.95</td></tr> </table> <p>PHF: 0.95</p> <p>Peak Hour Used: 1630 To 1730</p> <p>Use Military Time: 4:00 PM = 1600</p>	EB	WB	NB	SB	Total	3%	3%	2%	2%	0.95	<p>North-South Street East-West Street</p> <p>International Blvd SR 518 WB Off-Ramp</p> <p>2014</p>	<p>International Blvd SR 518 WB Off-Ramp</p> <p>2014</p>	<p>International Blvd SR 518 WB Off-Ramp</p> <p>1/2035</p> <p>% Increase = 35.0%</p>	<p>International Blvd SR 518 WB Off-Ramp</p> <p>1/2035</p> <p>% Increase = 31.5%</p>	<p>International Blvd SR 518 WB Off-Ramp</p> <p>1/2035</p> <p>% Increase = 49.3%</p>	<p>International Blvd SR 518 WB Off-Ramp</p> <p>1/2035</p> <p>% Increase = 49.1%</p>	<p>International Blvd SR 518 WB Off-Ramp</p> <p>1/2035</p> <p>% Increase = 49.5%</p>
EB	WB	NB	SB	Total													
3%	3%	2%	2%	0.95													

Actual Counts

Existing (2014)
= HOV volume within Thru volume

(S1) 2025 - No 509
= HOV volume within Thru volume

(S2.1) 2025 Baseline
= HOV volume within Thru volume

(S4) 2025 Baseline noSBL
= HOV volume within Thru volume

(S5.1) 2025 Full Build
= HOV volume within Thru volume

(S6.1) 2025 Baseline wSAE
= HOV volume within Thru volume

Synchro code: 10/10/2014

Synchro code: 1/1/2014

Synchro code: 1/1/2035

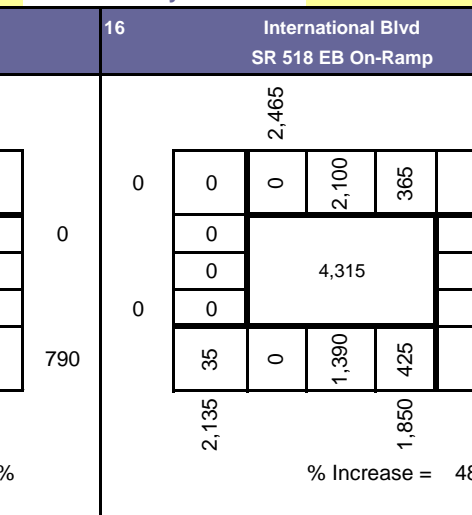
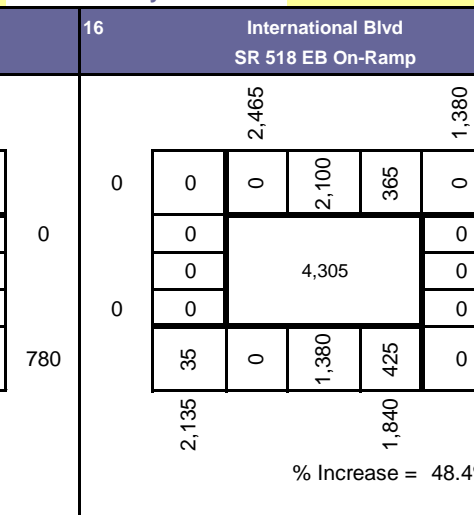
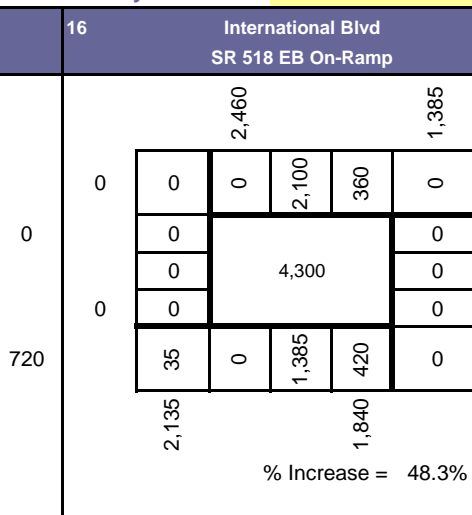
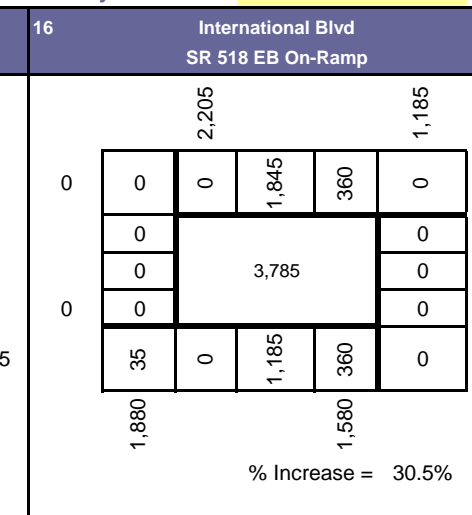
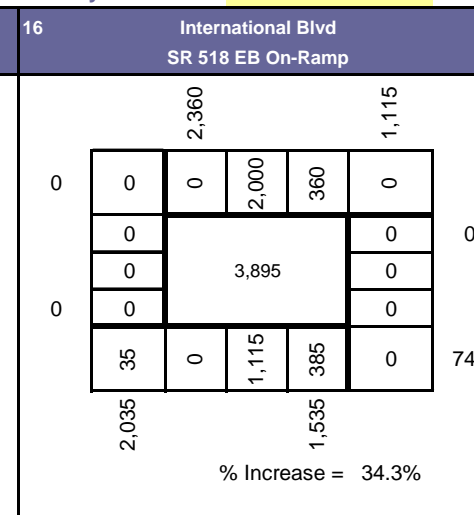
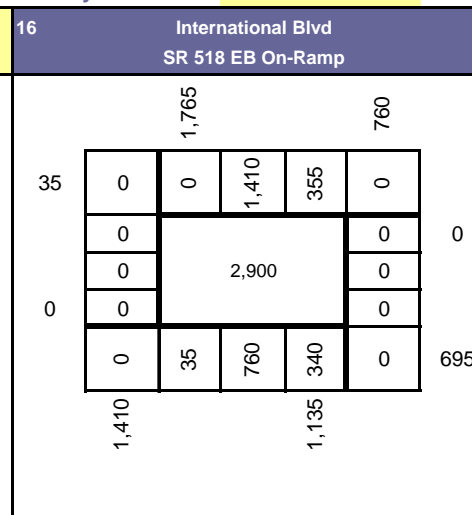
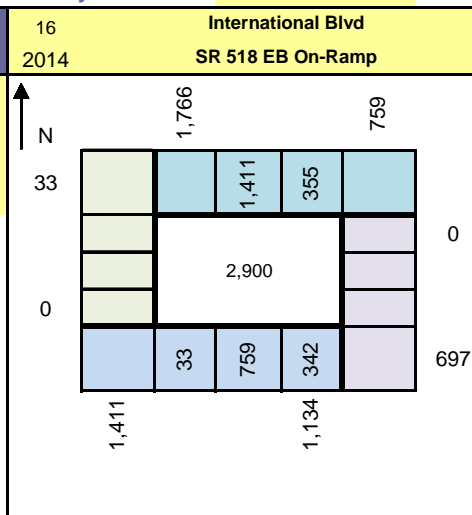
Synchro code: 1/1/2035

Synchro code: 1/1/2035

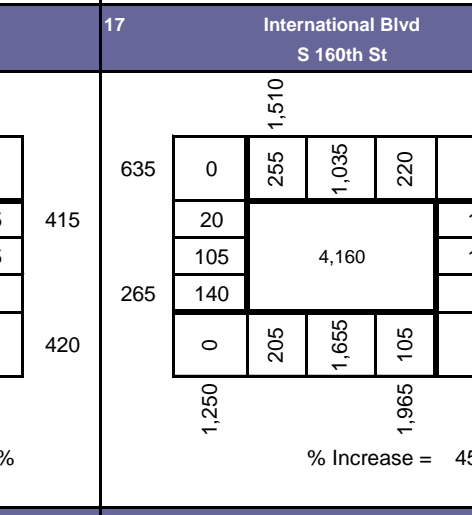
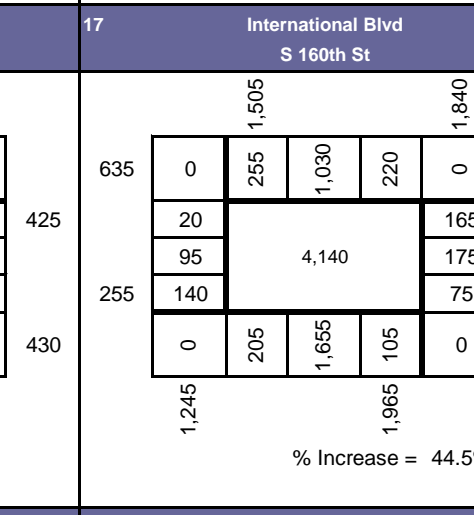
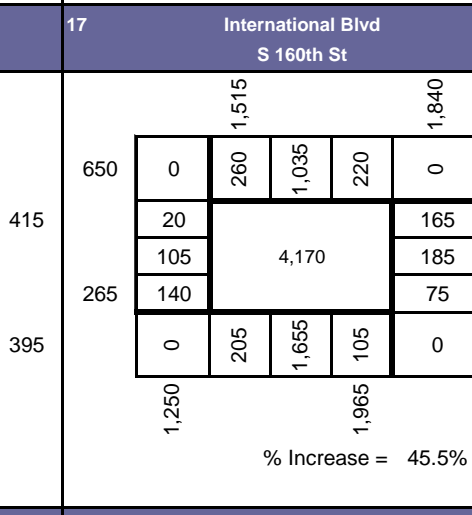
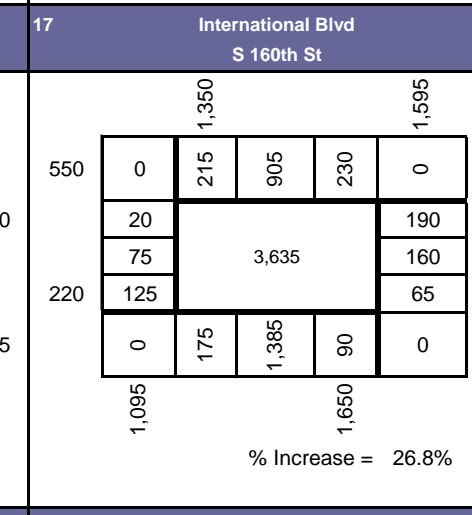
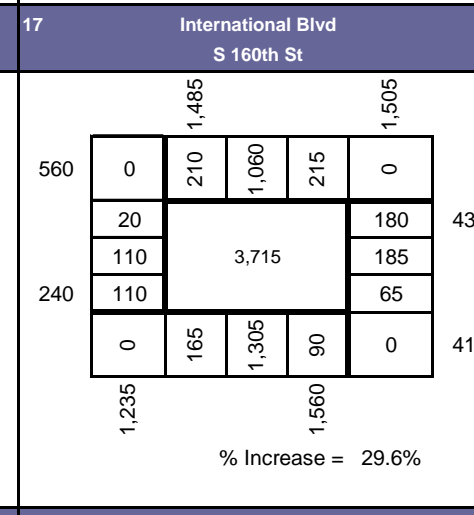
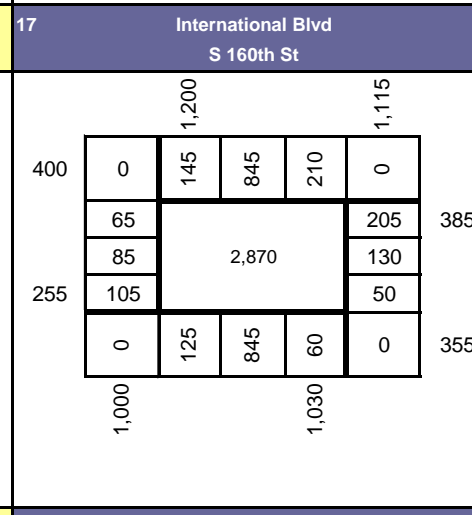
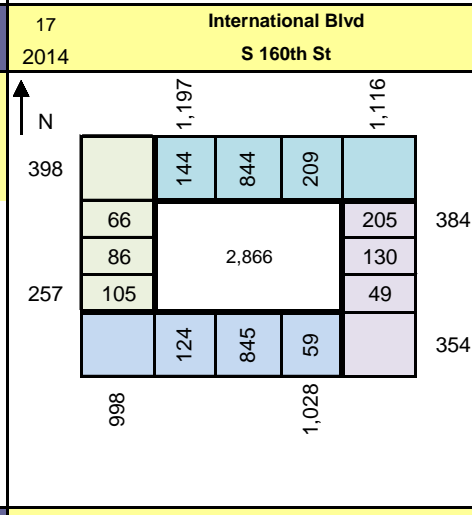
Synchro code: 1/1/2035

Synchro code: 1/1/2035

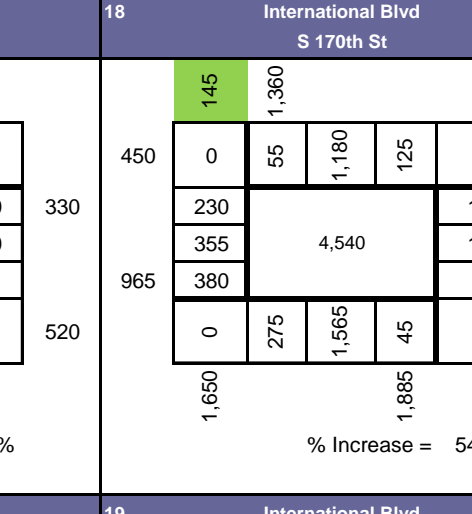
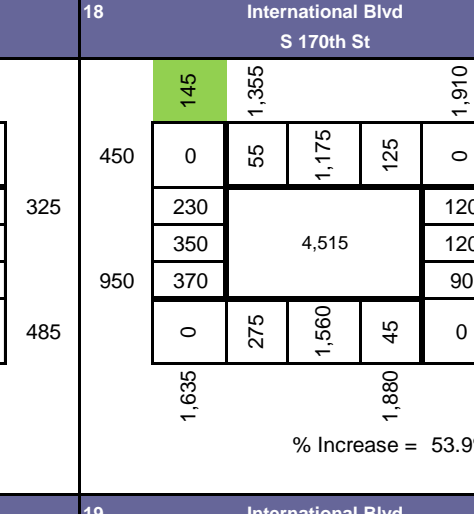
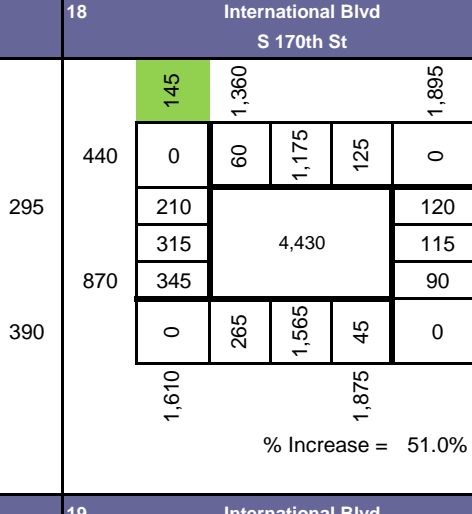
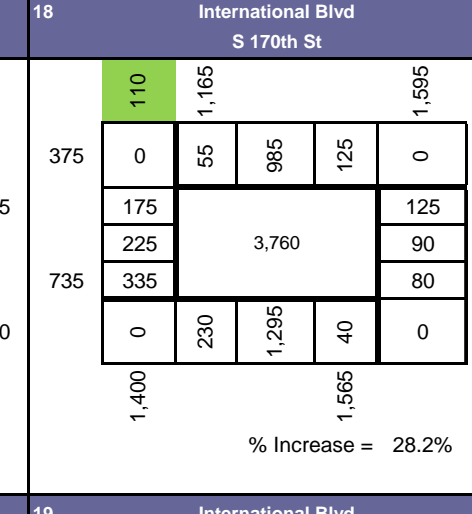
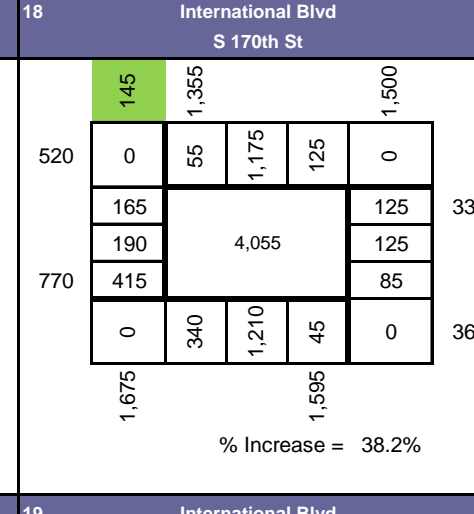
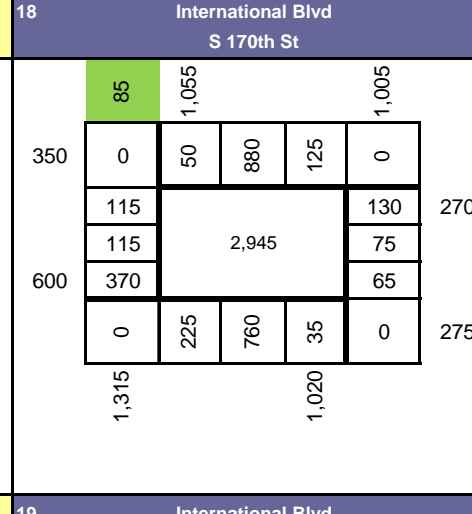
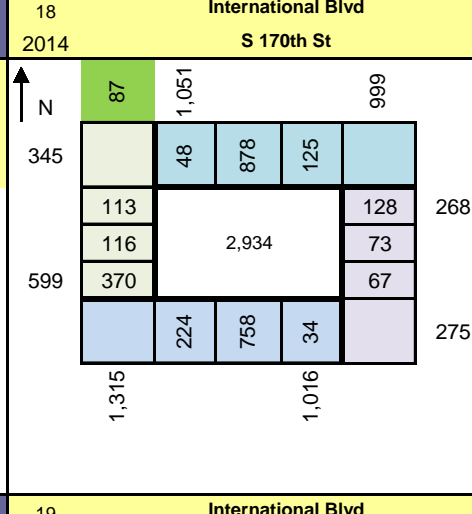
Count Date: 6/3/2014
Count Source: IDAX
%HV: EB 0%, WB 0%, NB 3%, SB 2%, Total 0.98
PHF: 0.98
Peak Hour Used: 1630 To 1730
Use Military Time: 4:00 PM = 1600



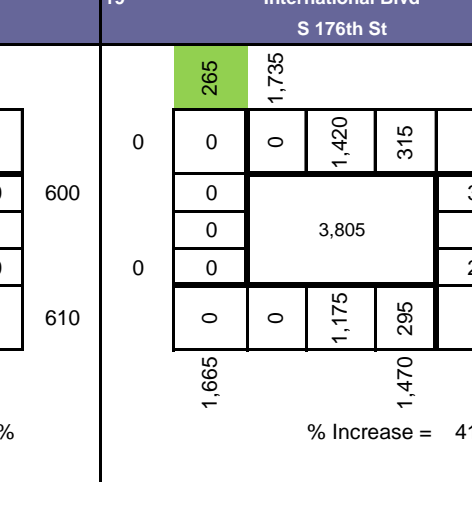
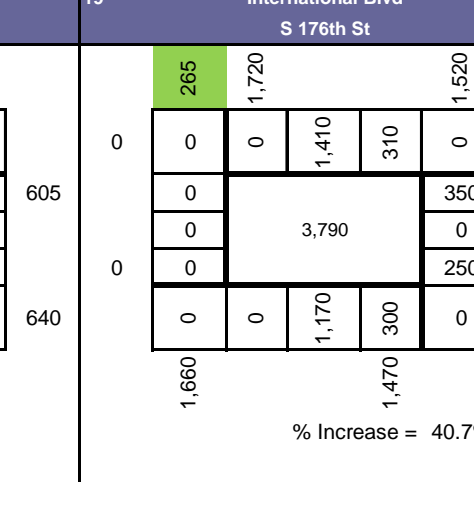
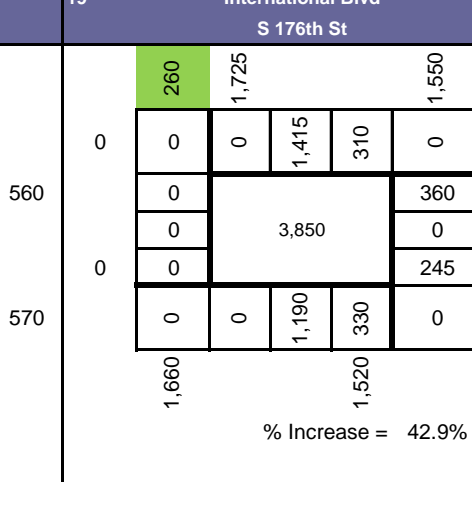
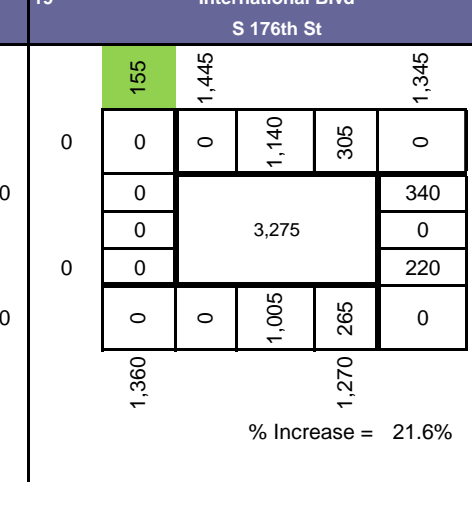
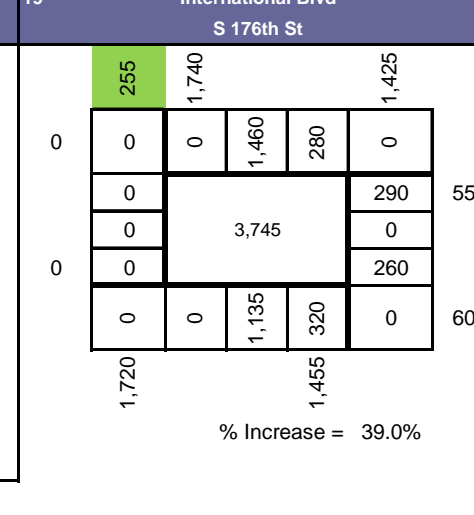
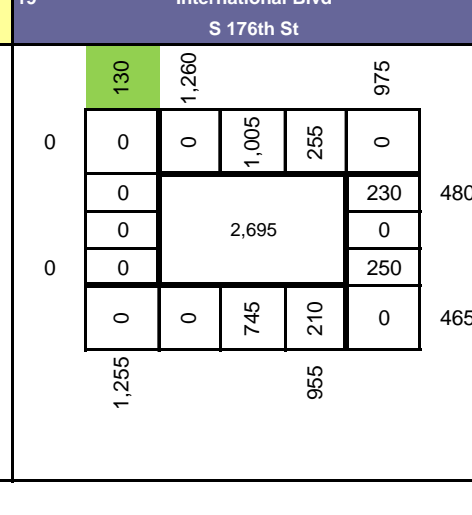
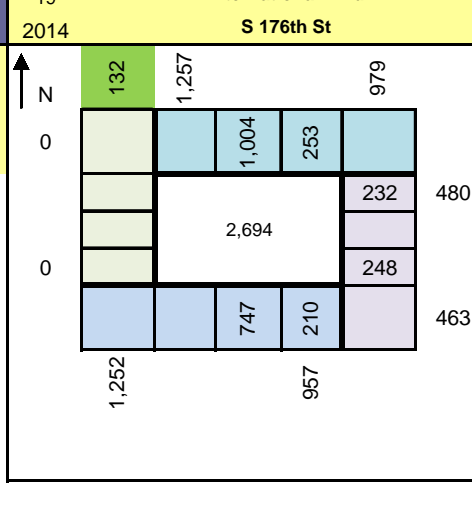
Count Date: 6/3/2014
Count Source: IDAX
%HV: EB 5%, WB 3%, NB 3%, SB 3%, Total 0.94
PHF: 0.94
Peak Hour Used: 1630 To 1730
Use Military Time: 4:00 PM = 1600



Count Date: 6/3/2014
Count Source: IDAX
%HV: EB 6%, WB 6%, NB 8%, SB 4%, Total 0.98
PHF: 0.98
Peak Hour Used: 1630 To 1730
Use Military Time: 4:00 PM = 1600



Count Date: 6/3/2014
Count Source: IDAX
%HV: EB 0%, WB 3%, NB 9%, SB 3%, Total 0.97
PHF: 0.97
Peak Hour Used: 1630 To 1730
Use Military Time: 4:00 PM = 1600



Actual Counts

Existing (2014)
ROUNDED to 5

(S1) 2025 - No 509

(S2.1) 2025 Baseline

(S4) 2025 Baseline noSBL

(S5.1) 2025 Full Build

(S6.1) 2025 Baseline wSAE

Synchro code: 10/10/2014

Synchro code: 1/1/2014

Synchro code: 1/2035

Synchro code: 1/2035

Synchro code: 1/2035

Synchro code: 1/2035

Synchro code: 1/2035

North-South Street East-West Street	20 2011	20 2011	20 2011	20 2011	20 2011	20 2011	20 2011
North-South Street East-West Street	Military Rd S 170th St	Military Rd S 170th St	Military Rd S 170th St	Military Rd S 170th St	Military Rd S 170th St	Military Rd S 170th St	Military Rd S 170th St
Count Date:	10/11/2011						
Count Source:	TC2 (SeaTac)						
EB WB NB SB Total	0% 0% 1% 2%						
PHF	0.95						
Peak Hour Used:							
From To	1645 1745						
Use Military Time: 4:00 PM = 1600	0						
	↑ N 82 70 628 497	80 70 650 510	100 75 725 585	85 80 670 515	90 95 730 560	90 90 710 550	90 95 720 555
	47 69	47 70	45 70	50 75	50 70	50 70	50 70
	624 459	640 470	710 520	655 470	695 510	680 500	685 505
	% Increase = 14.3%			% Increase = 5.0%	% Increase = 13.1%	% Increase = 10.7%	% Increase = 11.9%
North-South Street East-West Street	Military Rd S 176th St	Military Rd S 176th St	Military Rd S 176th St	Military Rd S 176th St	Military Rd S 176th St	Military Rd S 176th St	Military Rd S 176th St
Count Date:	10/11/2011						
Count Source:	TC2 (SeaTac)						
EB WB NB SB Total	1% 0% 1% 1%						
PHF	0.96						
Peak Hour Used:							
From To	1645 1745						
Use Military Time: 4:00 PM = 1600	0						
	↑ N 445 282 922 518	460 290 950 530	545 430 980 605	490 375 910 535	540 455 940 575	540 455 920 565	535 455 930 560
	1,013 504	1,045 520	1,080 660	1,020 605	1,045 685	1,050 690	1,050 690
	595 537	615 550	695 625	630 555	690 600	675 595	685 595
	% Increase = 16.7%			% Increase = 6.3%	% Increase = 14.8%	% Increase = 14.0%	% Increase = 14.2%
North-South Street East-West Street	Military Rd I-5 SB Ramp	Military Rd I-5 SB Ramp	Military Rd I-5 SB Ramp	Military Rd I-5 SB Ramp	Military Rd I-5 SB Ramp	Military Rd I-5 SB Ramp	Military Rd I-5 SB Ramp
Count Date:	6/3/2014						
Count Source:	IDAX						
EB WB NB SB Total	3% 3% 3% 2%						
PHF	0.98						
Peak Hour Used:							
From To	1615 1715						
Use Military Time: 4:00 PM = 1600	0						
	↑ N 500 785 696 402	495 835 695 395	620 1,025 845 450	660 990 770 285	720 1,110 850 305	690 1,075 845 295	695 1,070 855 290
	288 529	290 580	355 660	595 580	630 720	610 595	620 585
	392 142	395 145	445 150	290 150	395 150	300 150	305 150
	% Increase = 21.9%			% Increase = 15.7%	% Increase = 30.7%	% Increase = 22.1%	% Increase = 22.4%
North-South Street East-West Street	Military Rd I-5 NB Ramp	Military Rd I-5 NB Ramp	Military Rd I-5 NB Ramp	Military Rd I-5 NB Ramp	Military Rd I-5 NB Ramp	Military Rd I-5 NB Ramp	Military Rd I-5 NB Ramp
Count Date:	6/3/2014						
Count Source:	IDAX						
EB WB NB SB Total	3% 0% 1% 2%						
PHF	0.96						
Peak Hour Used:							
From To	1615 1715						
Use Military Time: 4:00 PM = 1600	0						
	↑ N 414 254 550 397	415 255 535 395	605 305 555 460	600 135 495 475	705 155 490 500	700 145 495 500	710 140 495 505
	0 0	0 0	0 0	0 0	0 0	0 0	0 0
	709 396	695 395	845 450	770 285	850 310	845 295	855 295
	% Increase = 18.4%			% Increase = 1.5%	% Increase = 10.7%	% Increase = 9.6%	% Increase = 10.3%

Actual Counts

Existing (2014)
= HOV volume within Thru volume
ROUNDED to 5

(S1) 2025 - No 509
= HOV volume within Thru volume

(S2.1) 2025 Baseline
= HOV volume within Thru volume

(S4) 2025 Baseline noSBL
= HOV volume within Thru volume

(S5.1) 2025 Full Build
= HOV volume within Thru volume

(S6.1) 2025 Baseline wSAE
= HOV volume within Thru volume

Location	Actual Counts	Existing (2014)	(S1) 2025 - No 509	(S2.1) 2025 Baseline	(S4) 2025 Baseline noSBL	(S5.1) 2025 Full Build	(S6.1) 2025 Baseline wSAE
North-South Street East-West Street 24 2014	Synchro code: 10/10/2014						
	Count Date: 6/3/2014 Count Source: IDAX %HV: EB 2%, WB 3%, NB 6%, SB 2%, Total 2% PHF: 0.88 Peak Hour Used: 1630 To 1730 Use Military Time: 4:00 PM = 1600 0						
North-South Street East-West Street 25 2014	Synchro code: 1/1/2014						
	Count Date: 6/3/2014 Count Source: IDAX %HV: EB 11%, WB 0%, NB 6%, SB 4%, Total 6% PHF: 0.89 Peak Hour Used: 1630 To 1730 Use Military Time: 4:00 PM = 1600 0						
North-South Street East-West Street 26 2011	Synchro code: 1/2035						
	Count Date: 6/21/2011 Count Source: QC (Burien) #54 %HV: EB 2%, WB 2%, NB 2%, SB 3%, Total 3% PHF: 0.94 Peak Hour Used: 1645 To 1745 Use Military Time: 4:00 PM = 1600 0						
North-South Street East-West Street 27 2011	Synchro code: 1/2035						
	Count Date: 4/14/2011 Count Source: QC (Burien) #14 %HV: EB 1%, WB 0%, NB 2%, SB 2%, Total 2% PHF: 0.97 Peak Hour Used: 1645 To 1745 Use Military Time: 4:00 PM = 1600 0						

Actual Counts

HOV volume within Thru volume
Existing (2014)
ROUNDED to 5

HOV volume within Thru volume
(S1) 2025 - No 509

HOV volume within Thru volume
(S2.1) 2025 Baseline

HOV volume within Thru volume
(S4) 2025 Baseline noSBL

HOV volume within Thru volume
(S5.1) 2025 Full Build

HOV volume within Thru volume
(S6.1) 2025 Baseline wSAE

Location	Actual Counts (2014)	Existing (2014)	(S1) 2025 - No 509	(S2.1) 2025 Baseline	(S4) 2025 Baseline noSBL	(S5.1) 2025 Full Build	(S6.1) 2025 Baseline wSAE
North-South Street East-West Street	Synchro code: 10/10/2014 Count Date: 6/3/2014 Count Source: IDAX %HV: EB 7%, WB 4%, NB 6%, SB 2%, Total 0.93 PHF: 0.93 Peak Hour Used: 1645 to 1745 Use Military Time: 4:00 PM = 1600	Synchro code: 1/1/2014 % Increase = 7.9%	Synchro code: 1/2035 % Increase = -0.8%	Synchro code: 1/2035 % Increase = 8.9%	Synchro code: 1/2035 % Increase = 8.9%	Synchro code: 1/2035 % Increase = 8.4%	
	Des Moines Wy S 144th St 28 2014 N 117, 152, 370, 413 229, 232	Des Moines Wy S 144th St 28 310, 320 335, 415, 230	Des Moines Wy S 144th St 28 335, 355 135, 160, 250	Des Moines Wy S 144th St 28 250, 365 135, 150, 255	Des Moines Wy S 144th St 28 260, 410 150, 175, 270	Des Moines Wy S 144th St 28 265, 405 150, 175, 270	Des Moines Wy S 144th St 28 260, 405 150, 175, 270
	EB WB NB SB Total %HV 7% 4% 6% 2% PHF 0.93						
	Peak Hour Used: From 1645 To 1745 Use Military Time: 4:00 PM = 1600						
	0						
North-South Street East-West Street	Synchro code: 6/22/2011 Count Source: QC (Burien) #50 %HV: EB 0%, WB 2%, NB 2%, SB 5%, Total 0.92 PHF: 0.92 Peak Hour Used: 1645 to 1745 Use Military Time: 4:00 PM = 1600	Synchro code: SR 518 WB Off-Ramp 29 2011 N 0, 0, 0, 0, 0 531, 130, 0	Synchro code: SR 518 WB Off-Ramp 29 345, 420 545, 170, 0	Synchro code: SR 518 WB Off-Ramp 29 405, 480 605, 180, 0	Synchro code: SR 518 WB Off-Ramp 29 310, 495 495, 195, 0	Synchro code: SR 518 WB Off-Ramp 29 345, 550 525, 225, 0	Synchro code: SR 518 WB Off-Ramp 29 350, 550 535, 225, 0
	Des Moines Wy SR 518 WB Off-Ramp 29 2011 N 0, 0, 0, 0, 0 531, 130, 0	Des Moines Wy SR 518 WB Off-Ramp 29 345, 420 545, 170, 0	Des Moines Wy SR 518 WB Off-Ramp 29 405, 480 605, 180, 0	Des Moines Wy SR 518 WB Off-Ramp 29 310, 495 495, 195, 0	Des Moines Wy SR 518 WB Off-Ramp 29 345, 550 525, 225, 0	Des Moines Wy SR 518 WB Off-Ramp 29 350, 550 535, 225, 0	Des Moines Wy SR 518 WB Off-Ramp 29 345, 550 530, 225, 0
	EB WB NB SB Total %HV 0% 2% 2% 5% PHF 0.92						
	Peak Hour Used: From 1645 To 1745 Use Military Time: 4:00 PM = 1600						
	0						
North-South Street East-West Street	Synchro code: 6/9/2011 Count Source: QC (Burien) #38 %HV: EB 0%, WB 2%, NB 2%, SB 5%, Total 0.92 PHF: 0.92 Peak Hour Used: 1645 to 1745 Use Military Time: 4:00 PM = 1600	Synchro code: SR 518 EB On-Ramp 30 2011 N 0, 0, 0, 0, 0 351, 167, 322, 332	Synchro code: SR 518 EB On-Ramp 30 540, 170 360, 330, 340	Synchro code: SR 518 EB On-Ramp 30 600, 180 365, 400, 455	Synchro code: SR 518 EB On-Ramp 30 490, 195 345, 325, 295	Synchro code: SR 518 EB On-Ramp 30 520, 225 345, 370, 350	Synchro code: SR 518 EB On-Ramp 30 530, 225 345, 350, 340
	Des Moines Wy SR 518 EB On-Ramp 30 2011 N 0, 0, 0, 0, 0 351, 167, 322, 332	Des Moines Wy SR 518 EB On-Ramp 30 540, 170 360, 330, 340	Des Moines Wy SR 518 EB On-Ramp 30 600, 180 365, 400, 455	Des Moines Wy SR 518 EB On-Ramp 30 490, 195 345, 325, 295	Des Moines Wy SR 518 EB On-Ramp 30 520, 225 345, 370, 350	Des Moines Wy SR 518 EB On-Ramp 30 530, 225 345, 350, 340	Des Moines Wy SR 518 EB On-Ramp 30 530, 225 345, 355, 345
	EB WB NB SB Total %HV 0% 2% 2% 5% PHF 0.92						
	Peak Hour Used: From 1645 To 1745 Use Military Time: 4:00 PM = 1600						
	0						
North-South Street East-West Street	Synchro code: 6/7/2011 Count Source: QC (Burien) #36 %HV: EB 3%, WB 2%, NB 3%, SB 2%, Total 0.93 PHF: 0.93 Peak Hour Used: 1645 to 1745 Use Military Time: 4:00 PM = 1600	Synchro code: S 156th St 31 2011 N 288, 251, 406, 285, 241	Synchro code: S 156th St 31 400, 345 420, 340, 265	Synchro code: S 156th St 31 405, 385 425, 365, 355	Synchro code: S 156th St 31 415, 330 430, 340, 320	Synchro code: S 156th St 31 435, 365 445, 370, 380	Synchro code: S 156th St 31 445, 355 450, 370, 365
	Des Moines Wy S 156th St 31 2011 N 288, 251, 406, 285, 241	Des Moines Wy S 156th St 31 400, 345 420, 340, 265	Des Moines Wy S 156th St 31 405, 385 425, 365, 355	Des Moines Wy S 156th St 31 415, 330 430, 340, 320	Des Moines Wy S 156th St 31 435, 365 445, 370, 380	Des Moines Wy S 156th St 31 445, 355 450, 370, 365	Des Moines Wy S 156th St 31 435, 355 450, 365, 365
	EB WB NB SB Total %HV 3% 2% 3% 2% PHF 0.93						
	Peak Hour Used: From 1645 To 1745 Use Military Time: 4:00 PM = 1600						
	0						

Actual Counts

Existing (2014)
= HOV volume within Thru volume
ROUNDED to 5

(S1) 2025 - No 509
= HOV volume within Thru volume

(S2.1) 2025 Baseline
= HOV volume within Thru volume

(S4) 2025 Baseline noSBL
= HOV volume within Thru volume

(S5.1) 2025 Full Build
= HOV volume within Thru volume

(S6.1) 2025 Baseline wSAE
= HOV volume within Thru volume

Synchro code: 10/10/2014		Synchro code: 1/1/2014		Synchro code: 1/2035		Synchro code: 1/2035		Synchro code: 1/2035		Synchro code: 1/2035		Synchro code: 1/2035			
North-South Street East-West Street Count Date: 6/8/2011 Count Source: QC (Burien) #37 EB WB NB SB Total %HV 2% 0% 1% 3% PHF 0.93 Peak Hour Used: From 1645 To 1745 Use Military Time: 4:00 PM = 1600 0		Des Moines Memorial Dr S 160th St 32 2011 N 224 195 475 1 352 5 878 4 8 17 0 25 153 0 6 296 178		Des Moines Memorial Dr S 160th St 32 2014 N 210 0 430 5 365 200 245 5 10 5 850 5 10 20 0 0 10 0 25 160 0 0 10 285 185		Des Moines Memorial Dr S 160th St 32 2035 N 210 0 435 10 385 220 245 25 35 10 870 10 10 10 0 0 20 0 20 140 0 0 20 255 160 % Increase = -0.9%		Des Moines Memorial Dr S 160th St 32 2035 N 235 0 445 10 370 245 195 240 20 20 40 10 870 20 20 5 0 0 20 0 20 105 0 0 20 245 125 % Increase = -0.9%		Des Moines Memorial Dr S 160th St 32 2035 N 250 0 450 10 395 260 200 240 30 60 10 905 30 60 0 0 0 20 0 20 105 0 0 20 240 125 % Increase = 3.1%		Des Moines Memorial Dr S 160th St 32 2035 N 275 0 460 10 390 265 220 230 25 60 10 915 35 60 0 0 0 20 0 20 100 0 0 20 230 120 % Increase = 4.2%		Des Moines Memorial Dr S 160th St 32 2035 N 255 0 460 10 390 260 205 245 30 60 10 910 30 60 0 0 0 20 0 20 100 0 0 20 245 120 % Increase = 3.6%	
North-South Street East-West Street Count Date: 10/23/2014 Count Source: idax EB WB NB SB Total %HV 5% 5% 12% 5% PHF 0.96 Peak Hour Used: From 1615 To 1715 Use Military Time: 4:00 PM = 1600 0		24th Ave S S 154th Street 33 2014 N 433 125 374 89 308 62 136 481 159 1,447 205 125 140 281 103 110 33 281 425 246		24th Ave S S 154th Street 33 2014 N 435 0 375 90 305 60 135 480 160 1,450 205 125 140 285 0 105 110 35 0 285 425 250		24th Ave S S 154th Street 33 2035 N 490 0 435 90 355 70 145 500 190 1,695 210 170 145 330 0 140 140 50 0 330 520 330 % Increase = 17.1%		24th Ave S S 154th Street 33 2035 N 460 0 450 85 350 70 150 480 165 1,630 185 155 145 295 0 135 130 45 0 295 525 310 % Increase = 12.6%		24th Ave S S 154th Street 33 2035 N 470 0 470 85 385 75 160 485 210 1,760 170 160 155 350 0 155 150 55 0 350 555 360 % Increase = 21.6%		24th Ave S S 154th Street 33 2035 N 495 0 485 90 375 70 160 485 195 1,755 185 160 140 340 0 160 145 55 0 340 545 360 % Increase = 21.3%		24th Ave S S 154th Street 33 2035 N 490 0 480 90 380 75 160 480 195 1,755 180 160 140 340 0 165 145 55 0 340 545 365 % Increase = 21.3%	
North-South Street East-West Street Count Date: 10/19/2011 Count Source: TC2 (SeaTac) EB WB NB SB Total %HV 1% 4% 2% 1% PHF 0.92 Peak Hour Used: From 1615 To 1715 Use Military Time: 4:00 PM = 1600 0		Military Road S 150th Street 34 2011 N 43 11 308 18 361 32 50 100 24 809 21 26 29 71 11 279 29 71 334 319		Military Road S 150th Street 34 2014 N 40 0 315 20 370 35 50 100 25 825 20 25 30 75 0 10 285 30 0 75 340 325		Military Road S 150th Street 34 2035 N 50 0 375 65 430 40 100 150 25 945 20 25 30 120 0 10 290 30 0 120 345 330 % Increase = 16.8%		Military Road S 150th Street 34 2035 N 55 0 385 70 450 40 120 175 25 980 25 25 30 125 0 10 290 30 0 125 350 330 % Increase = 21.1%		Military Road S 150th Street 34 2035 N 55 0 425 105 510 45 165 220 25 1,080 25 25 30 160 0 10 300 30 0 160 355 340 % Increase = 33.5%		Military Road S 150th Street 34 2035 N 55 0 415 100 510 45 165 220 25 1,070 25 25 30 155 0 10 300 30 0 155 350 340 % Increase = 32.3%		Military Road S 150th Street 34 2035 N 55 0 420 100 510 45 165 220 25 1,075 25 25 30 155 0 10 300 30 0 155 355 340 % Increase = 32.9%	

Actual Counts

Existing (2014)
ROUNDED to 5

(S1) 2025 - No 509

(S2.1) 2025 Baseline

(S4) 2035 Baseline noSBL

(S5.1) 2035 Full Build

(S6.1) 2035 Baseline wSAE

Synchro code: 10/10/2014

Synchro code: 1/1/2014

Synchro code: 1/2035

Synchro code: 1/2035

Synchro code: 1/2035

Synchro code: 1/2035

Synchro code: 1/2035

North-South Street
East-West Street

30 mph
30 mph

35
1900

28th Ave S
509 WB Ramps

Count Date: **2025 Baseline Model**

Count Source: **2025 Baseline Model**

EB WB NB SB Total

%HV

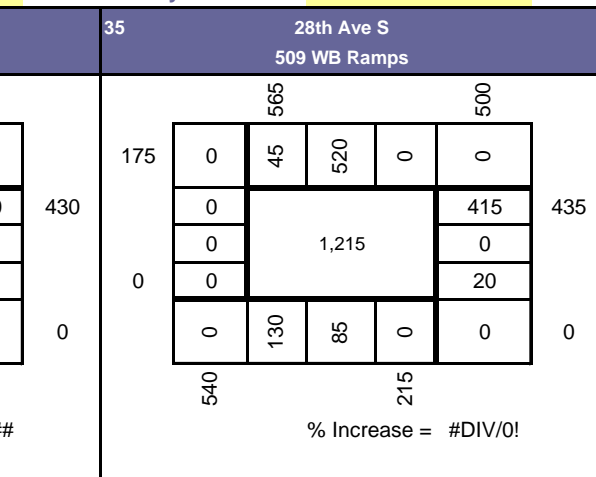
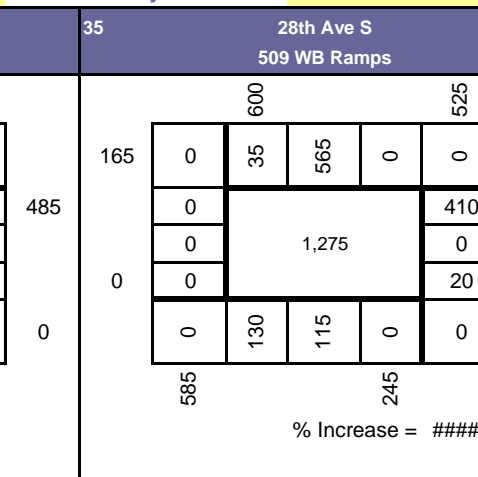
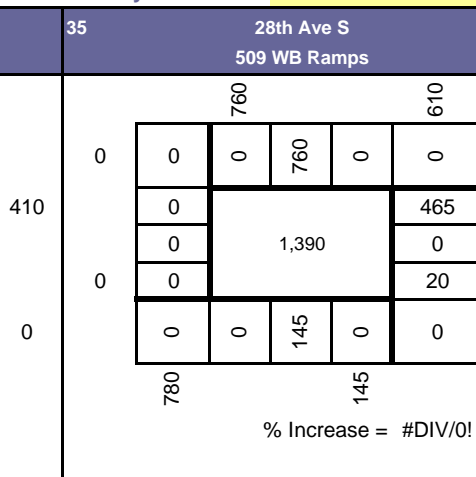
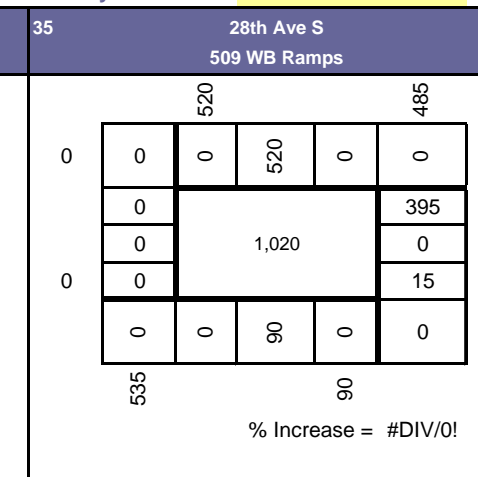
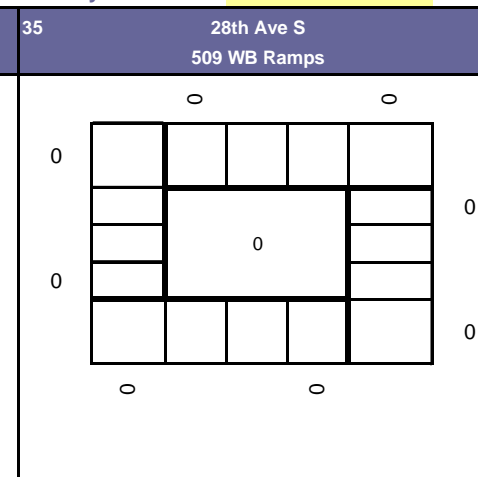
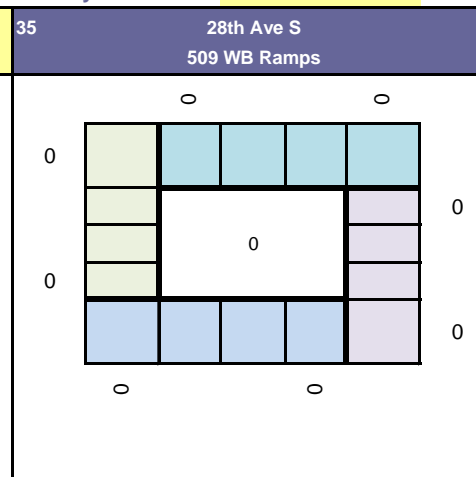
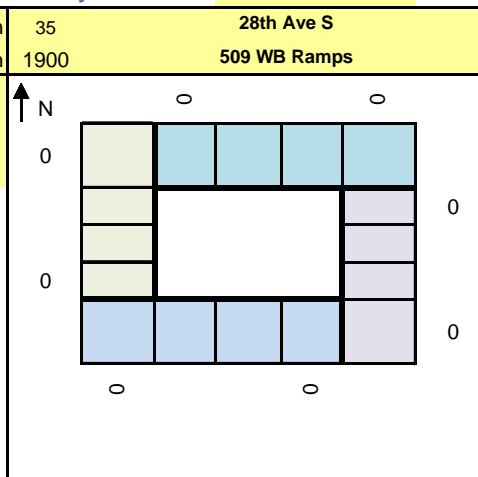
PHF

Peak Hour Used:

From To

Use Military Time: 4:00 PM = 1600

0



North-South Street
East-West Street

30 mph
30 mph

36
1900

28th Ave S
509 EB Ramps

Count Date: **2025 Baseline Model**

Count Source: **2025 Baseline Model**

EB WB NB SB Total

%HV

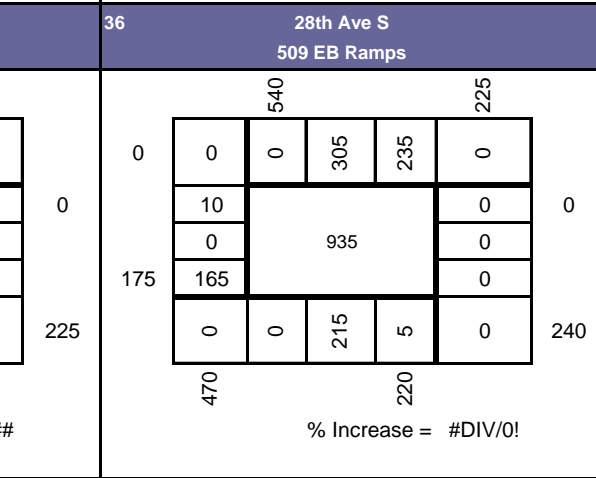
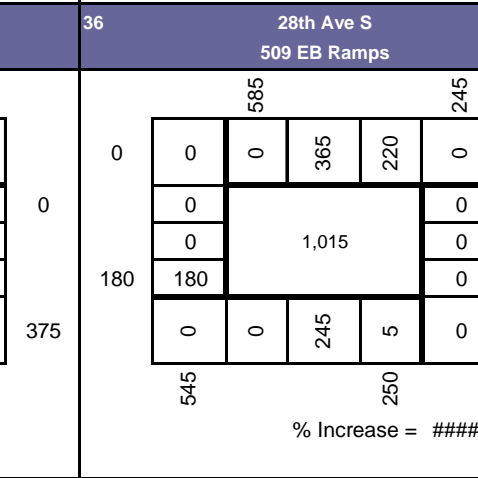
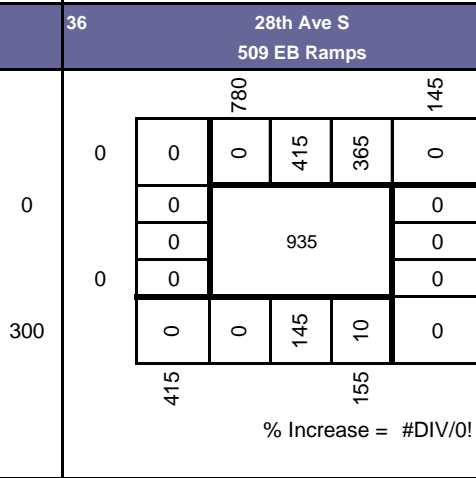
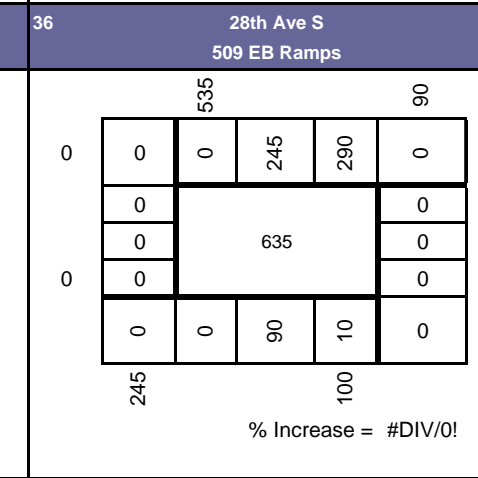
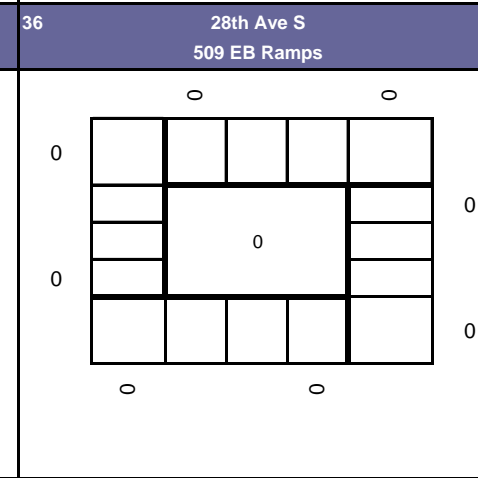
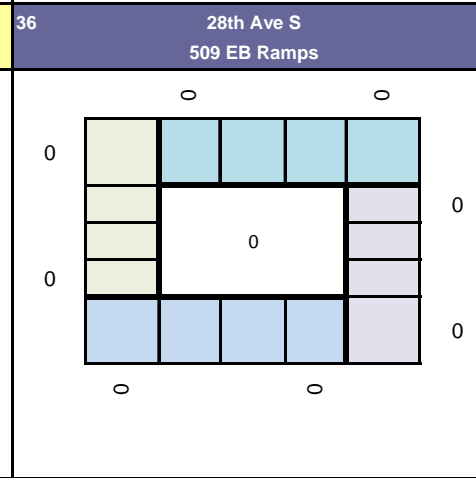
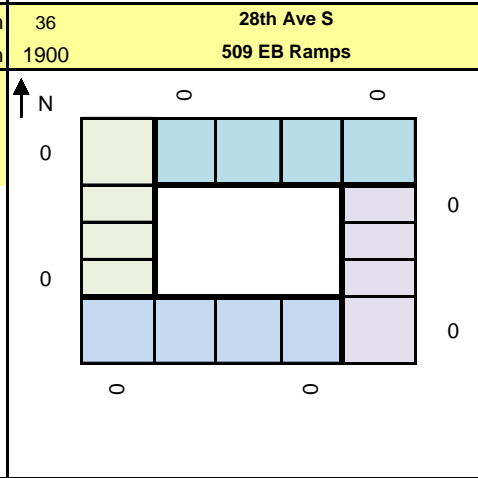
PHF

Peak Hour Used:

From To

Use Military Time: 4:00 PM = 1600

0



North-South Street
East-West Street

30 mph
30 mph

37
1900

SR 509
S 200th St

Count Date: **2035 Full Build Model**

Count Source: **2035 Full Build Model**

EB WB NB SB Total

%HV

PHF

Peak Hour Used:

From To

Use Military Time: 4:00 PM = 1600

0

