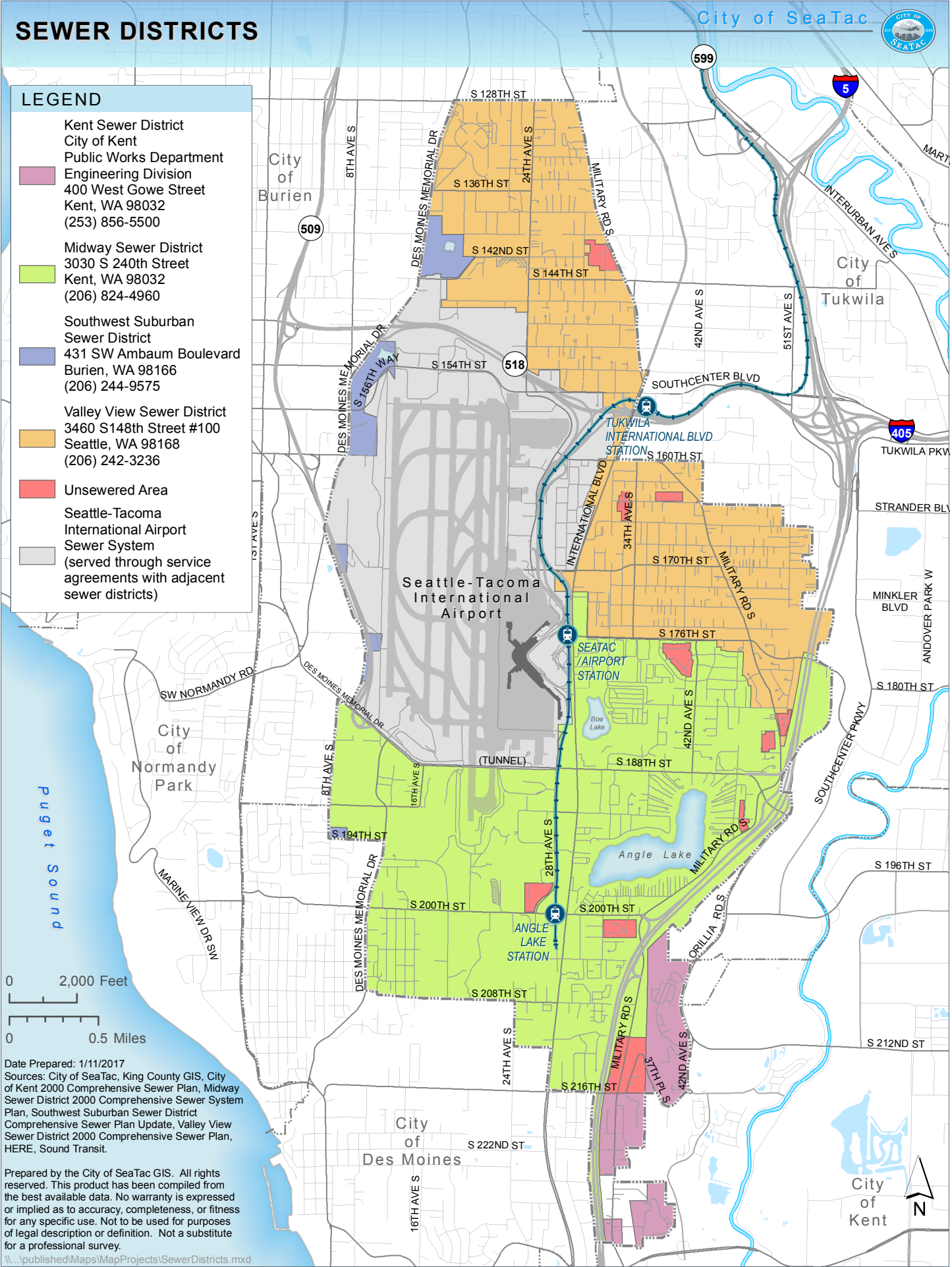


SEWER DISTRICTS



LEGEND

- Kent Sewer District
City of Kent
Public Works Department
Engineering Division
400 West Gowe Street
Kent, WA 98032
(253) 856-5500
- Midway Sewer District
3030 S 240th Street
Kent, WA 98032
(206) 824-4960
- Southwest Suburban Sewer District
431 SW Ambaum Boulevard
Burien, WA 98166
(206) 244-9575
- Valley View Sewer District
3460 S148th Street #100
Seattle, WA 98168
(206) 242-3236
- Unsewered Area
- Seattle-Tacoma International Airport Sewer System
(served through service agreements with adjacent sewer districts)



Date Prepared: 1/11/2017
 Sources: City of SeaTac, King County GIS, City of Kent 2000 Comprehensive Sewer Plan, Midway Sewer District 2000 Comprehensive Sewer System Plan, Southwest Suburban Sewer District Comprehensive Sewer Plan Update, Valley View Sewer District 2000 Comprehensive Sewer Plan, HERE, Sound Transit.

Prepared by the City of SeaTac GIS. All rights reserved. This product has been compiled from the best available data. No warranty is expressed or implied as to accuracy, completeness, or fitness for any specific use. Not to be used for purposes of legal description or definition. Not a substitute for a professional survey.