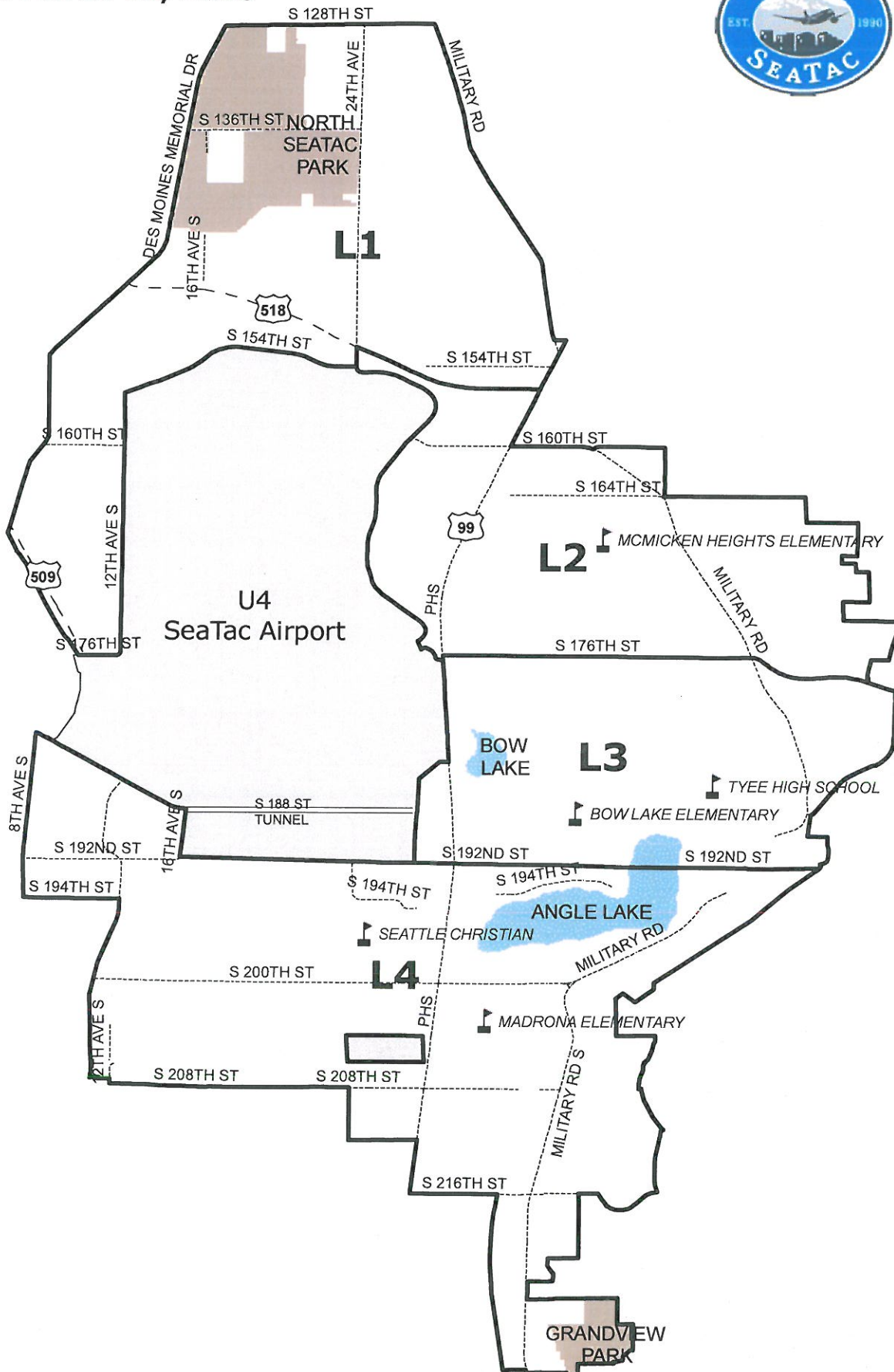


City of SeaTac Patrol Districts

Effective March 16, 2010



GRANDVIEW PARK



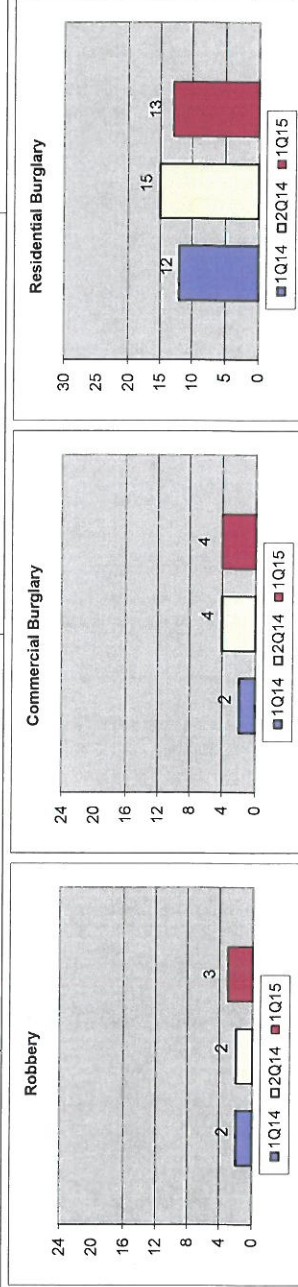
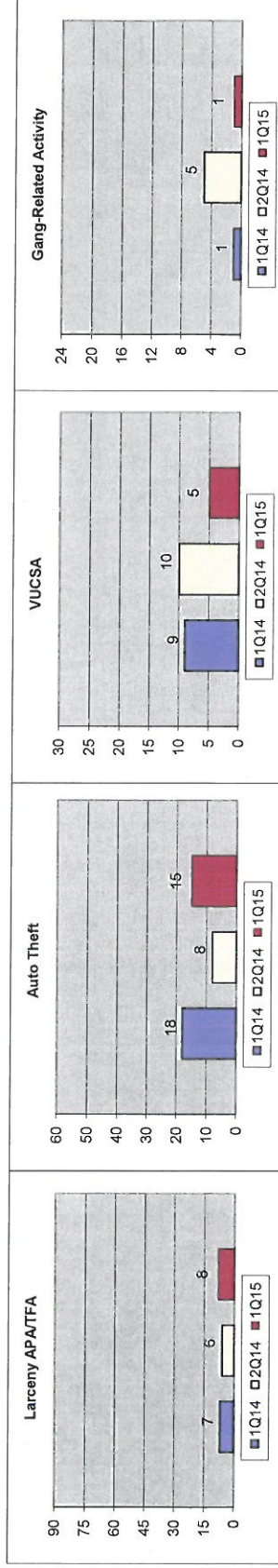
**King County Sheriff's Office
Selected Activity Counts for L1 District
1st Quarter 2015***



	Larceny APA/TFA			Auto Theft			VUCSA			Gang-Related Activity		
	1Q14	2Q14	Yr over Yr % Chg	1Q14	2Q14	Yr over Yr % Chg	1Q14	2Q14	Yr over Yr % Chg	1Q14	2Q14	Yr over Yr % Chg
L1	7	6	14.3%	18	8	-16.7%	9	10	-44.4%	1	5	0.0%

	Robbery			Comm. Burglary			Res. Burglary		
	1Q14	2Q14	Yr over Yr % Chg	1Q14	2Q14	Yr over Yr % Chg	1Q14	2Q14	Yr over Yr % Chg
L1	2	2	50.0%	2	4	100.0%	12	15	8.3%

*Numbers are estimates based on CAD data.



NOTE: APA/TFA = auto parts & accessories/taken from auto
 VUCSA = Violation of Uniform Controlled Substances Act
 CAD = mainly patrol activity, including 911 calls, officer-initiated activity, etc.



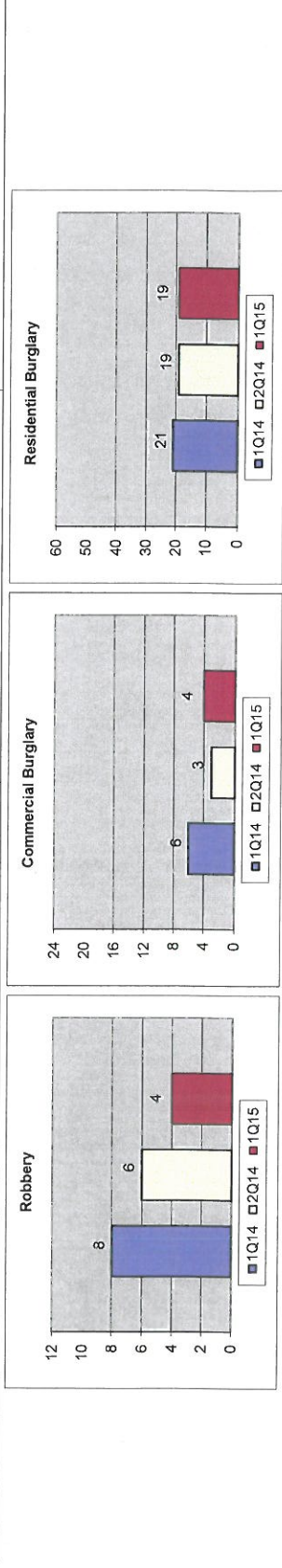
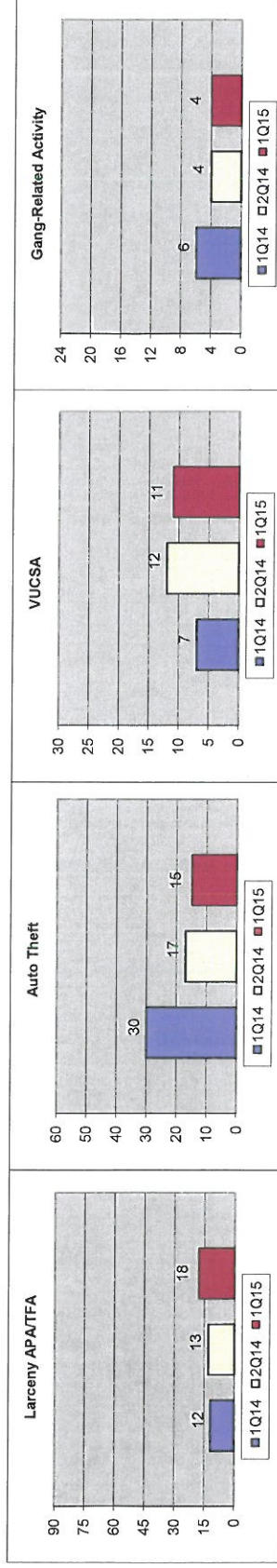
**King County Sheriff's Office
Selected Activity Counts for L2 District
1st Quarter 2015***



L2	Larceny APA/TFA			Auto Theft			VUCSA			Gang-Related Activity		
	1Q14	2Q14	Yr over Yr % Chg	1Q14	2Q14	Yr over Yr % Chg	1Q14	2Q14	Yr over Yr % Chg	1Q14	2Q14	Yr over Yr % Chg
L2	12	13	50.0%	30	17	-50.0%	7	12	57.1%	6	4	-33.3%

L2	Robbery			Comm. Burglary			Res. Burglary		
	1Q14	2Q14	Yr over Yr % Chg	1Q14	2Q14	Yr over Yr % Chg	1Q14	2Q14	Yr over Yr % Chg
L2	8	6	-50.0%	6	3	-33.3%	21	19	-9.5%

*Numbers are estimates based on CAD data.



NOTE: APA/TFA = auto parts & accessories/taken from auto
 VUCSA = Violation of Uniform Controlled Substances Act
 CAD = mainly patrol activity, including 911 calls, officer-initiated activity, etc.



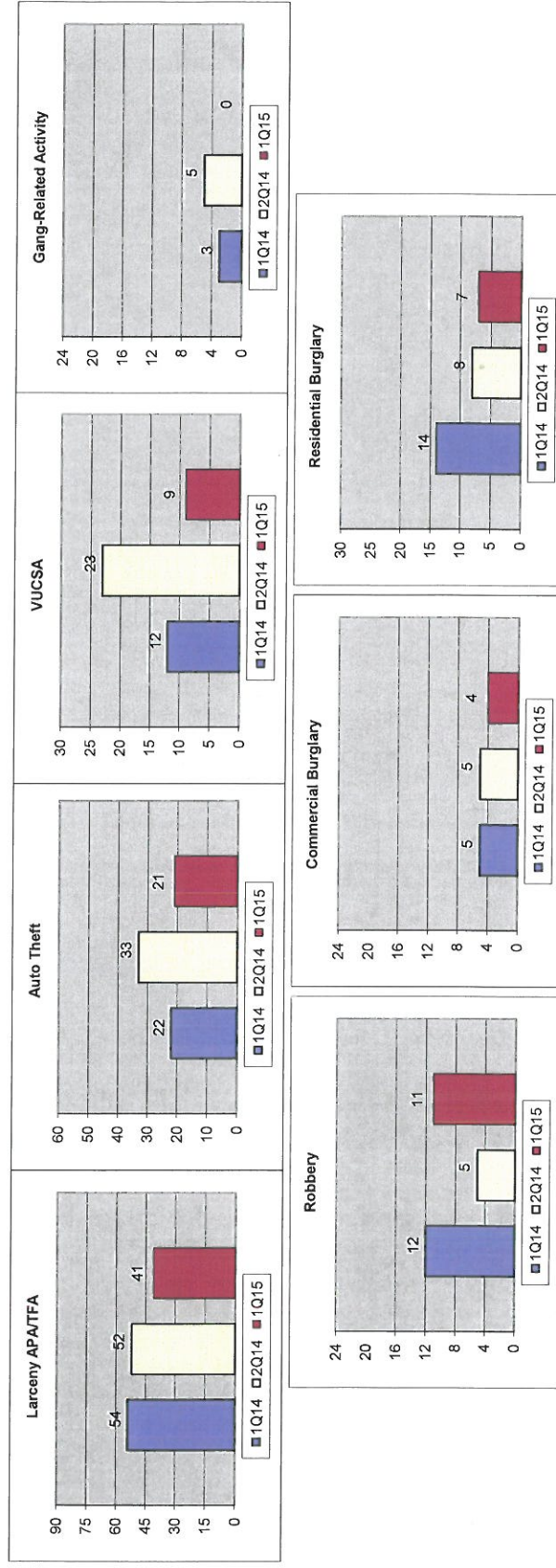
King County Sheriff's Office
Selected Activity Counts for L3 District
1st Quarter 2015*



L3	Larceny APA/TFA			Auto Theft			VUCSA			Gang-Related Activity		
	1Q14	2Q14	Yr over Yr % Chg	1Q14	2Q14	Yr over Yr % Chg	1Q14	2Q14	Yr over Yr % Chg	1Q14	2Q14	Yr over Yr % Chg
L3	54	52	-24.1%	22	33	-4.5%	12	23	-25.0%	3	5	-100.0%

L3	Robbery			Comm. Burglary			Res. Burglary		
	1Q14	2Q14	Yr over Yr % Chg	1Q14	2Q14	Yr over Yr % Chg	1Q14	2Q14	Yr over Yr % Chg
L3	12	5	-8.3%	5	4	-20.0%	14	8	-50.0%

*Numbers are estimates based on CAD data.



NOTE: APA/TFA = auto parts & accessories/taken from auto
 VUCSA = Violation of Uniform Controlled Substances Act
 CAD = mainly patrol activity, including 911 calls, officer-initiated activity, etc.



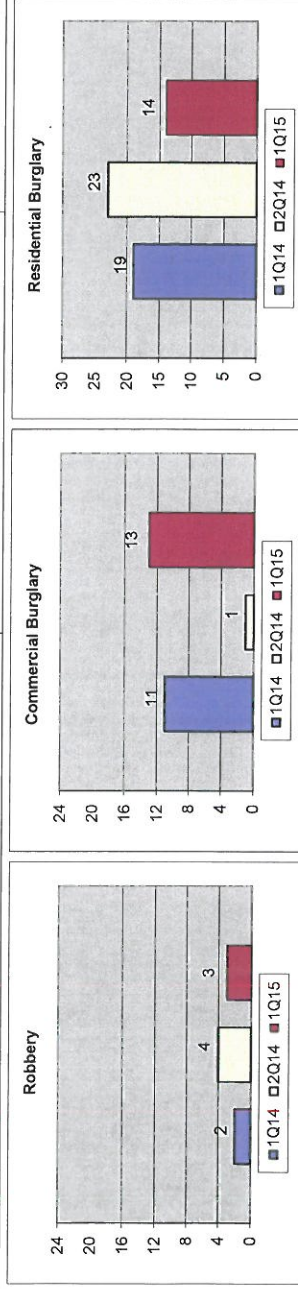
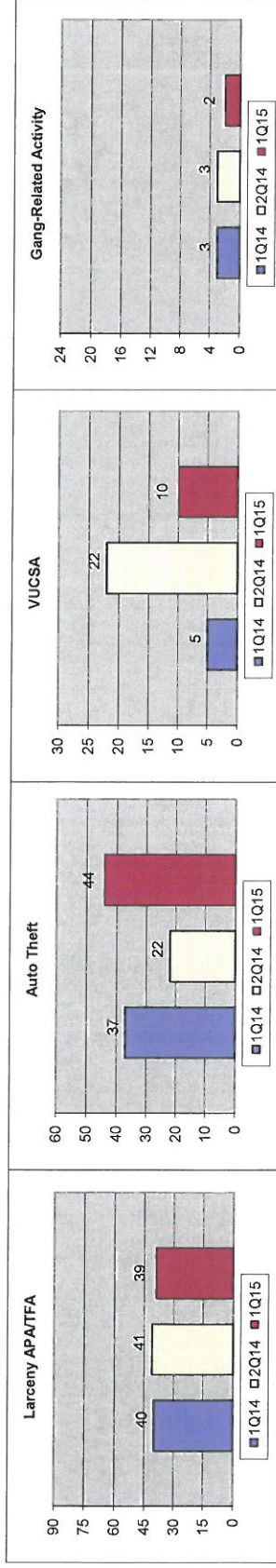
King County Sheriff's Office
Selected Activity Counts for L4 District
1st Quarter 2015*



	Larceny APA/TFA			Auto Theft			VUCSA			Gang-Related Activity		
	1Q14	2Q14	Yr over Yr % Chg	1Q14	2Q14	Yr over Yr % Chg	1Q14	2Q14	Yr over Yr % Chg	1Q14	2Q14	Yr over Yr % Chg
L4	40	41	-2.5%	37	22	18.9%	5	22	100.0%	3	3	-33.3%

	Robbery			Comm. Burglary			Res. Burglary		
	1Q14	2Q14	Yr over Yr % Chg	1Q14	2Q14	Yr over Yr % Chg	1Q14	2Q14	Yr over Yr % Chg
L4	2	4	50.0%	11	1	18.2%	19	23	14

*Numbers are estimates based on CAD data.



NOTE: APA/TFA = auto parts & accessories/taken from auto
 VUCSA = Violation of Uniform Controlled Substances Act
 CAD = mainly patrol activity, including 911 calls, officer-initiated activity, etc.