

# Draft Comprehensive Plan First Full Review



SeaTac City Council & Planning Commission  
March 17, 2015 Joint Meeting

# Meeting Purpose

- Common presentation for Council and Commission all elements of the Plan
- Refresher on final adoption process and roles of Council and commission
- Opportunity for mutual discussion and exchange
  - Common understanding of issues and changes
  - Feedback to staff on any changes before hearing

# Where we are in the process

- Changes suggested tonight can be addressed & incorporated into public review draft
- Public Review:
  - New Plan will be posted for public review
- Public Hearing – Scheduled for April 7 – regular Planning Commission meeting
  - Comments from public hearing will be considered/incorporated by Commission
  - Recommendation on final draft Plan
- Council action – Scheduled for June 9
  - Adoption of Plan

# Summary Review of Each Element



**THE FUTURE  
of Your City**

[www.cityofseatac.com/2035](http://www.cityofseatac.com/2035)

# Chapter 1

## Introduction & Framework

### Policies



# Key Points

## New Chapter:

- Existing policies with city-wide application relocated from other elements
- New Policies Address
  - Internal communication, coordination, consistency and monitoring
  - Maintain coordination with GMA, regional and county plans
  - Coordination with adjacent jurisdictions

# Chapter 2

## Land Use Element



# Key Points

- **Restructured - focus on Growth Management Strategy:**
  - Urban Center and Station Areas as higher density nodes
  - Light Rail as asset/catalyst
- **New Section – Healthy, Equitable, Connected Communities**
  - Include land uses to increase physical activity (GMA req.)
  - Safe & Complete Streets policy language



# Chapter 3

## Housing and Human Services Element

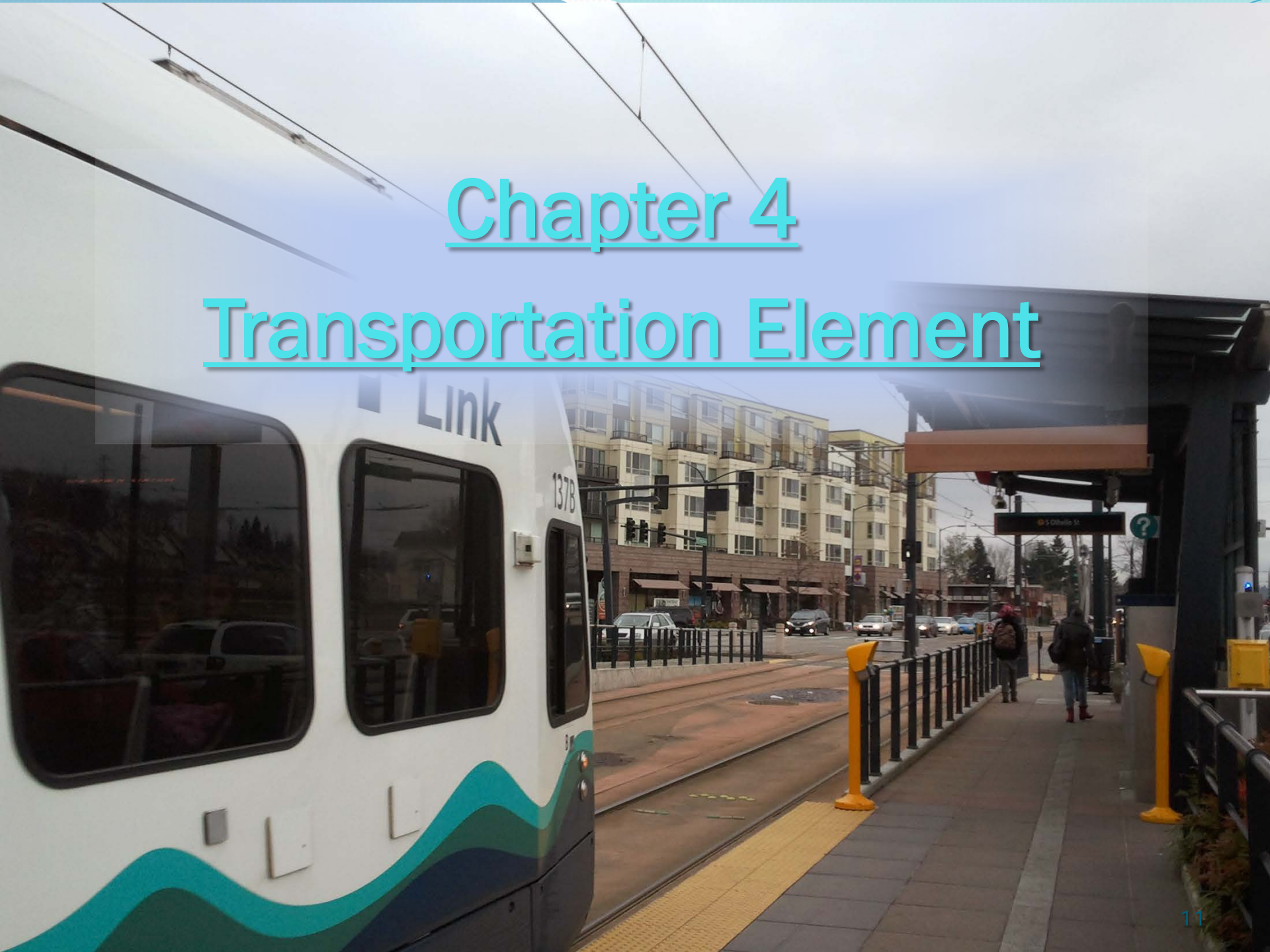


# Key Points

- **Combined Previously Separate Housing, Human Services Elements**
- **New Sections:**
  - Guiding Principles
  - Access to Services
- **Existing Sections**
  - Affordability section emphasizes access to transit

# Chapter 4

## Transportation Element

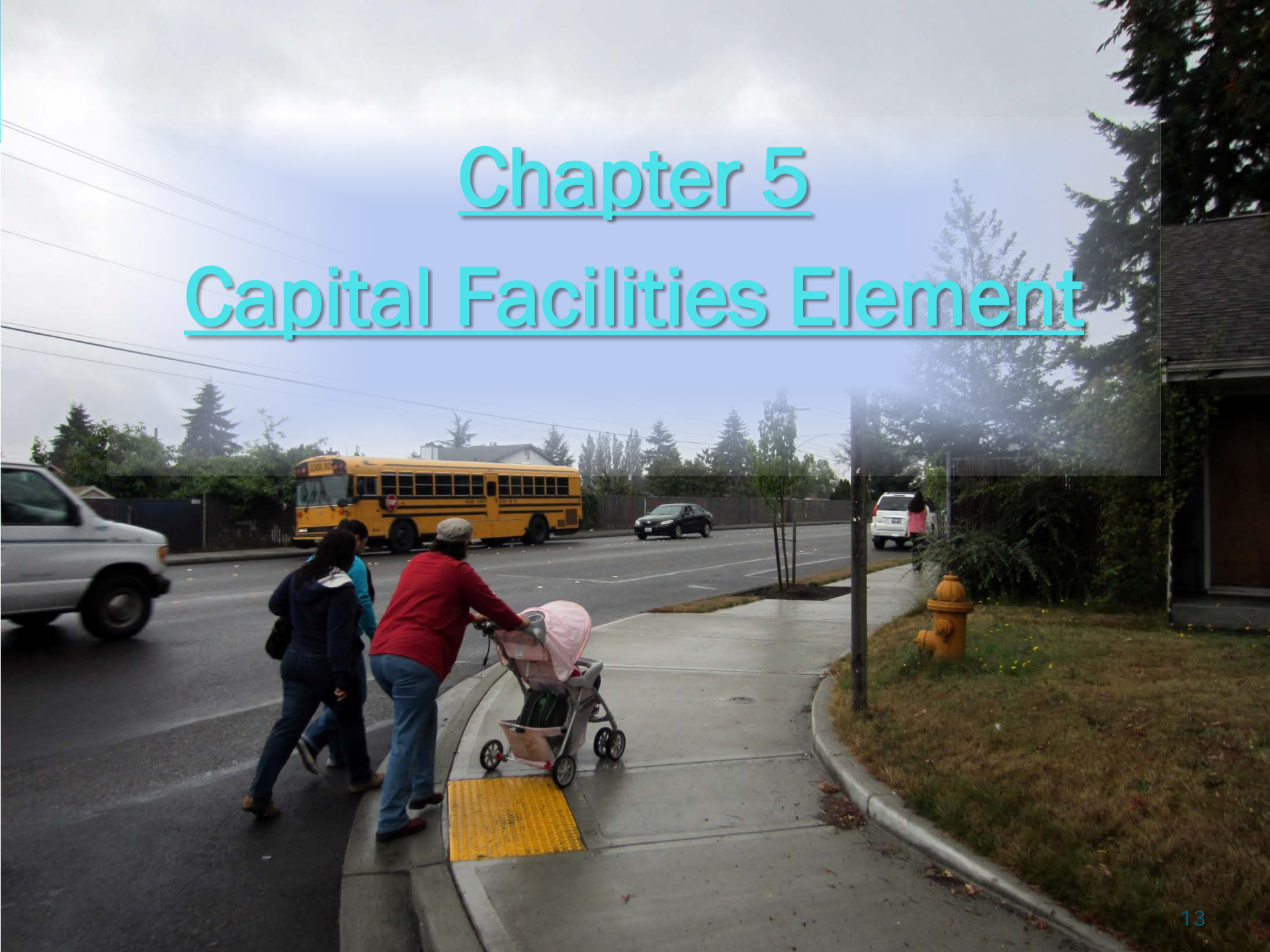


# Key Points

- **Specifies SR 509 / South Access**
  - Identifies need, phasing, timing
- **Incorporates Safe & Complete Streets**
  - Emphasizes pedestrian safety, alternate modes
  - Adds 'active transportation'
- **Adds Parking Policies**
  - Recognizes balance: livability, economic development, alternative modes
- **Updates Funding Policies**
  - Identifies Transp. Benefit District


# Chapter 5

## Capital Facilities Element



# Key Points

- Fire Services moved to outside agency category
- Some facility types removed from Level of Service (LOS) list:
  - Indoors and part of other facilities
  - One-of-a-kind facilities – likely won't be duplicated

The background image shows a street scene with utility poles and power lines. The sky is overcast and grey. In the foreground, there is a paved road. To the left, there is a grassy area with a fence. In the distance, there are trees and a building. The text 'Chapter 6' and 'Utilities Element' is overlaid in the center of the image.

# Chapter 6

# Utilities Element

# Key Points

## New Policies

- Designate basic utility services:
  - Electricity, sewer, water, solid waste, high speed internet
- New development to connect to sewer when available
- Coordinate new facility locations with providers (use EPF as necessary)
- Emphasis on energy and resource conservation



# Chapter 7

## Community Design

### Element



# Key Points

- Land use descriptions incorporated/restated as policies to guide zoning/development code provisions
- Consolidated parking policies from different sections into one section
- Policies covered in other elements deleted
  - Transit communities covered in Land Use Element
  - Aesthetics of utility lines covered in Utilities Element



# Chapter 8

# Economic Vitality Element

# Key Points

- **New Goal/Policy Section: Local Food Sector Policies**
  - Aligned with CPPW food access recommendations
  - Address lack of resiliency in local food system
  - Help address health disparities (south King County)
  - Assist new business development
- Public/private partnerships emphasized



# Chapter 9

## Environment Element

# Key Points

- **New Overarching Environment Goals Section:**
  - Best Available Science (BAS) *(new policies)*
  - Water Quality
  - Natural Drainage Systems
  - Air Quality
  - Greenhouse gas (GHG) emissions/Climate Change *(new policies – GMA req.)*

# Parks, Recreation and Open Space Element



# Key Points

- Element's relationship to PROS Plan (2008) stated
- Policy to preserve Miller Creek corridor as open space removed
  - No longer accessible – 3<sup>rd</sup> runway-related changes
- Urban Design section removed
  - Covered in Community Design Element
- Community Involvement section removed
  - Covered in Framework Policies



**END OF SUMMARY**  
**Draft Comprehensive Plan**  
**First Full Review**

