

# Angle Lake District Station Area Plan

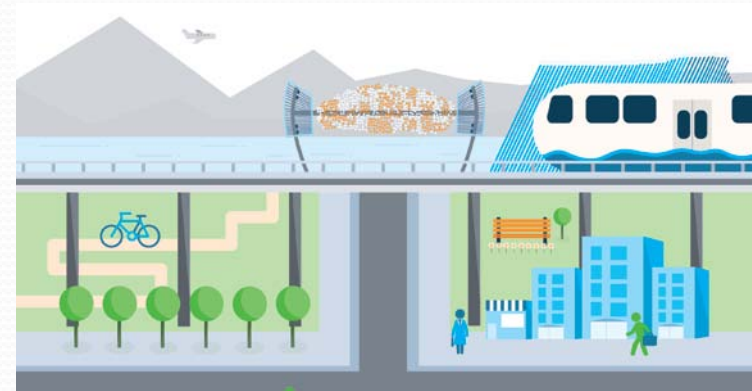


Council Study Session  
February 24, 2015

# PRESENTATION

## Purposes

- 1) **To provide an overview of:**
  - Anticipated review and adoption schedule
  - Chapters 1-4 of the draft plan
- 2) **To get Council input on chapters, especially Chapter 4: Community Vision**



# ANTICIPATED REVIEW AND ADOPTION SCHEDULE

## Council Review Schedule

### **Today: Plan Review 1**

- **Ch. 1: Introduction**
- **Ch. 2: Existing Conditions**
- **Ch. 3: Economic Opportunity**
- **Ch. 4: Community Vision**

### **March/April: Plan Review 2 & 3**

- **Ch. 5: Urban Design Framework**
- **Ch. 6: Implementation**

### **April/May: Potential Adoption**

# ANGLE LAKE DISTRICT STATION AREA PLAN REVIEW

## **Chapter 1: Introduction**

- The Opportunity
- About this Plan
- The Planning Context

# The Opportunity: Angle Lake Station

- Major transportation hub/destination
- New options for mobility regionally & locally
- Catalyst for community & economic development



## About this Plan:

- **Plan Goal:**

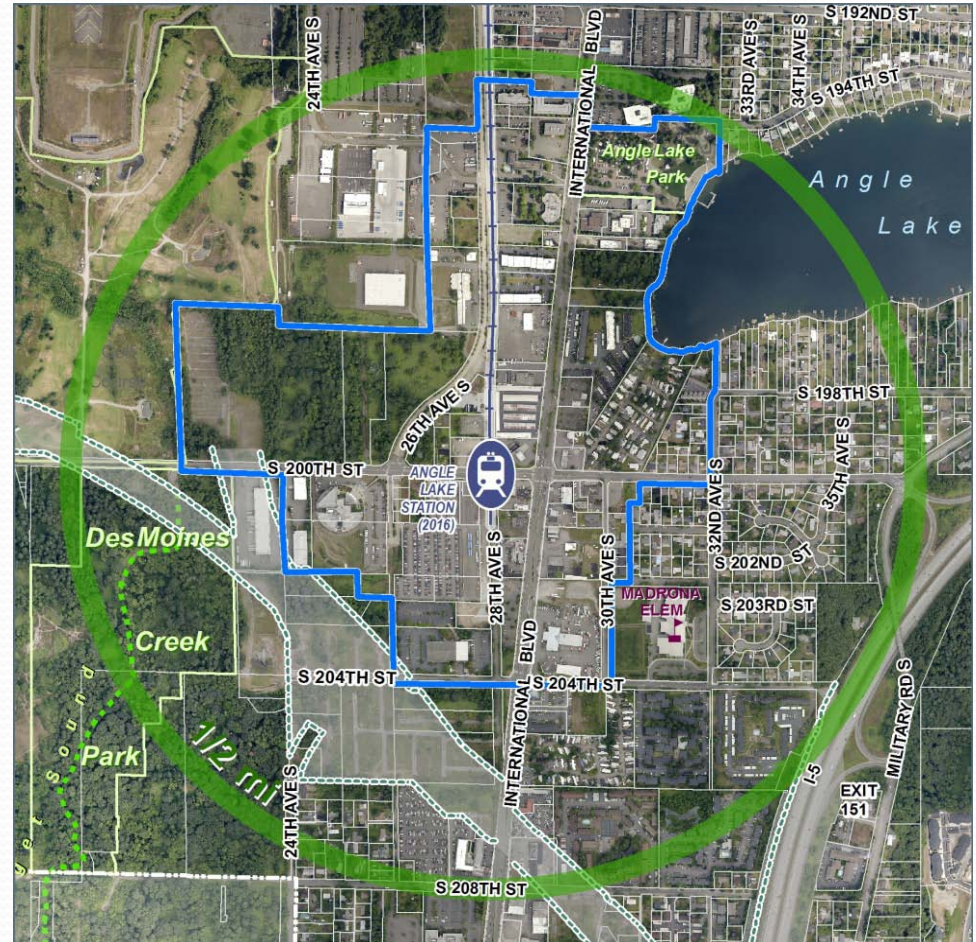
*To guide future development by providing a community-supported vision and an achievable strategy to transform the Angle Lake District into a pedestrian-friendly, transit-oriented community.*

- **Plan will be part of the Comprehensive Plan**
- **It will guide decision-making related to:**
  - Code development
  - Public and private investment
  - City activities in the District



## The Planning Context

- **District Boundary**
- **Extended Transit Community**  
(1/2 mile radius from station)
- **Local Light Rail System**  
(SeaTac's 3<sup>rd</sup> light rail station)



# ANGLE LAKE DISTRICT STATION AREA PLAN REVIEW

## **Chapter 2: Existing Conditions**

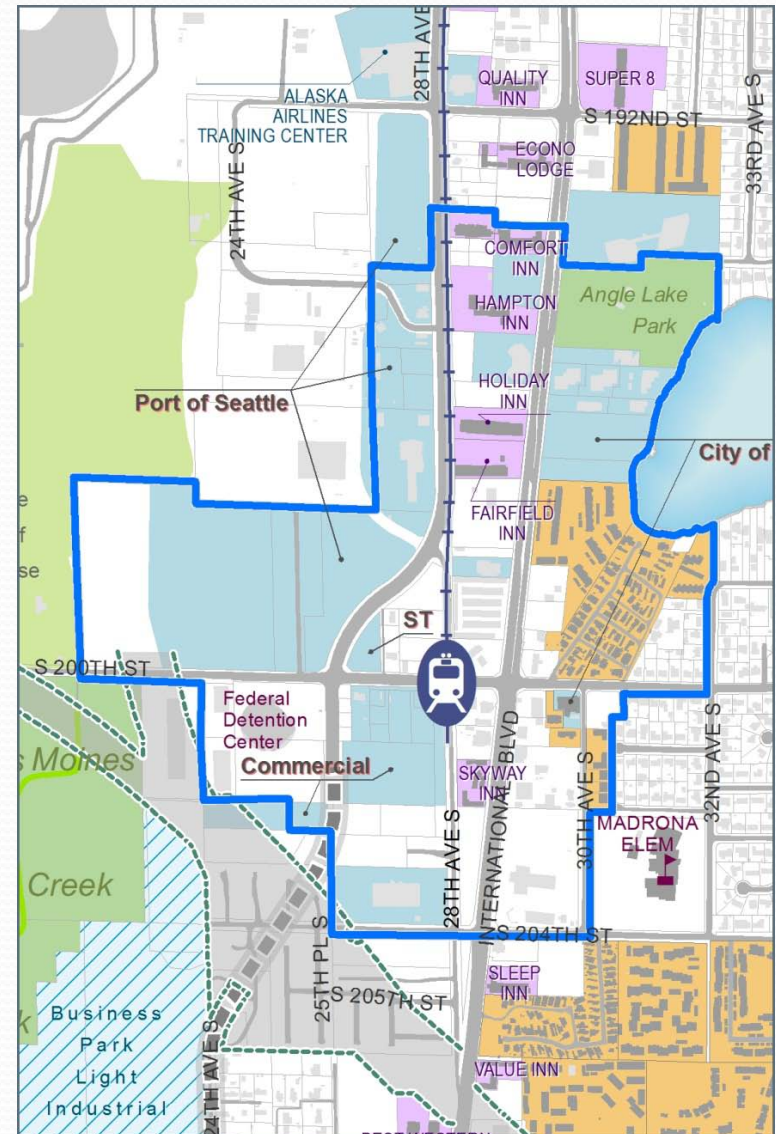
- Land Uses
- Community Assets
- Transportation / Mobility



## Current Land Uses

- **Commercial**           **38%**
- **Vacant**               **33%**
- **Residential**       **14%**
- **Government**       **8%**
- **Service**
- **Park**                 **6%**
- **Utility**               **1%**

*5 large employers, 8 hotels  
& 10 multifamily complexes  
within ½ mile of station*



## Community Assets

- **Views**
  - Lake, Mountains, Sound
- **Parks & Open Space**
  - Angle Lake Park, Des Moines Creek Park & Trail
- **Civic**
  - Madrona Elementary, Fire Station, Sound Transit Plaza

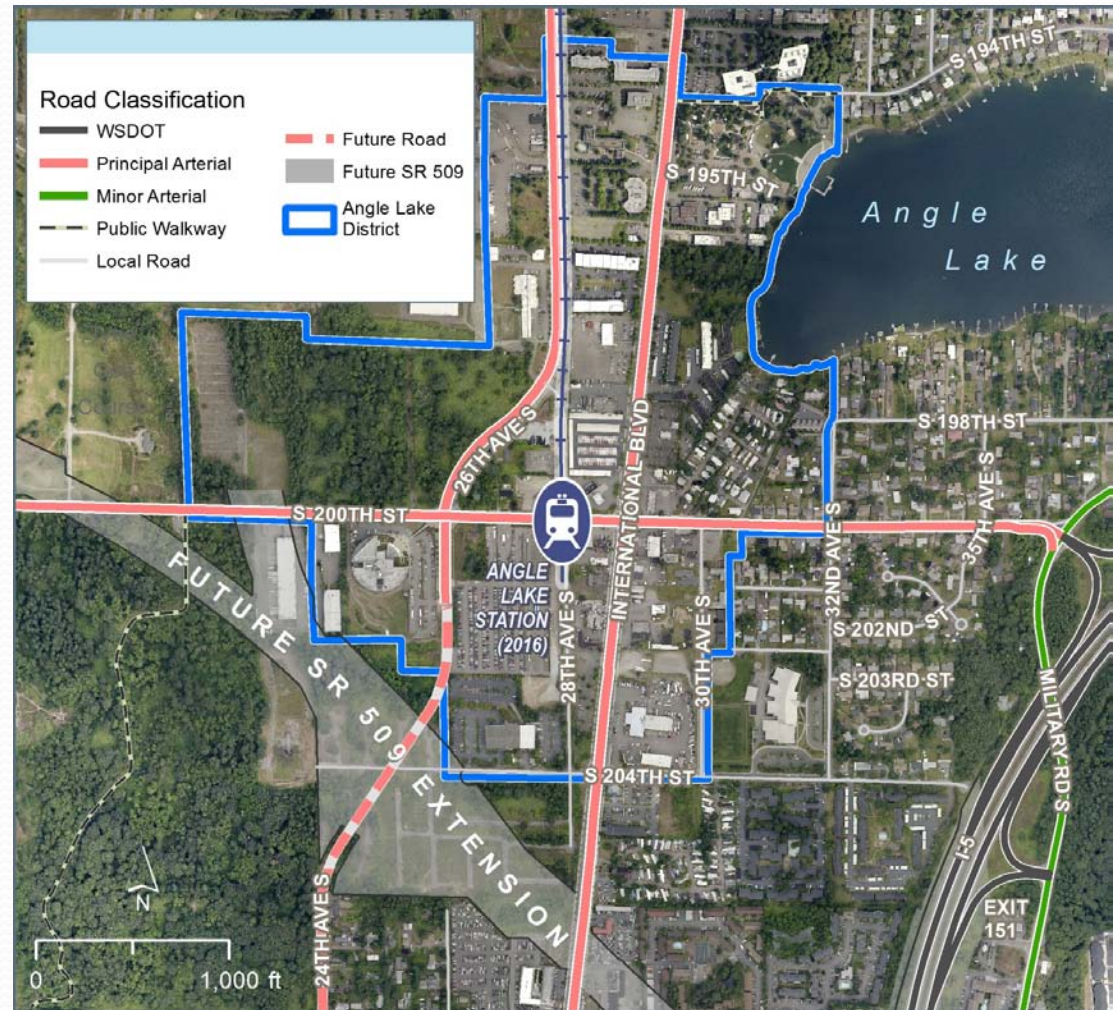




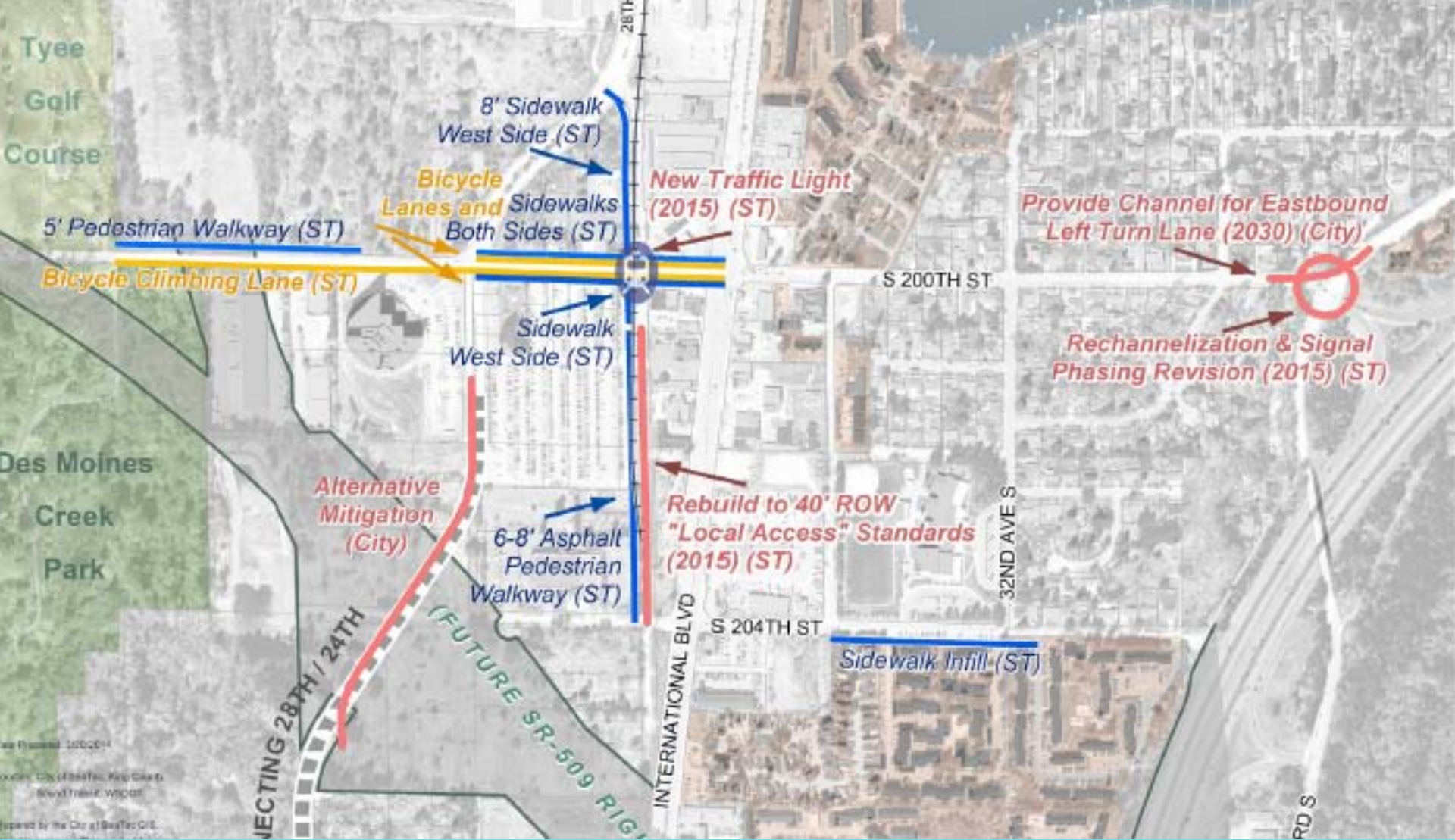
# Transportation / Mobility

## Existing Infrastructure

- Focus on motorized transportation
- Large block sizes
- Principal Arterials:
  - *International Blvd*
  - *S 200<sup>th</sup> Street*
  - *28<sup>th</sup>/26<sup>th</sup>/24<sup>th</sup> Ave S*





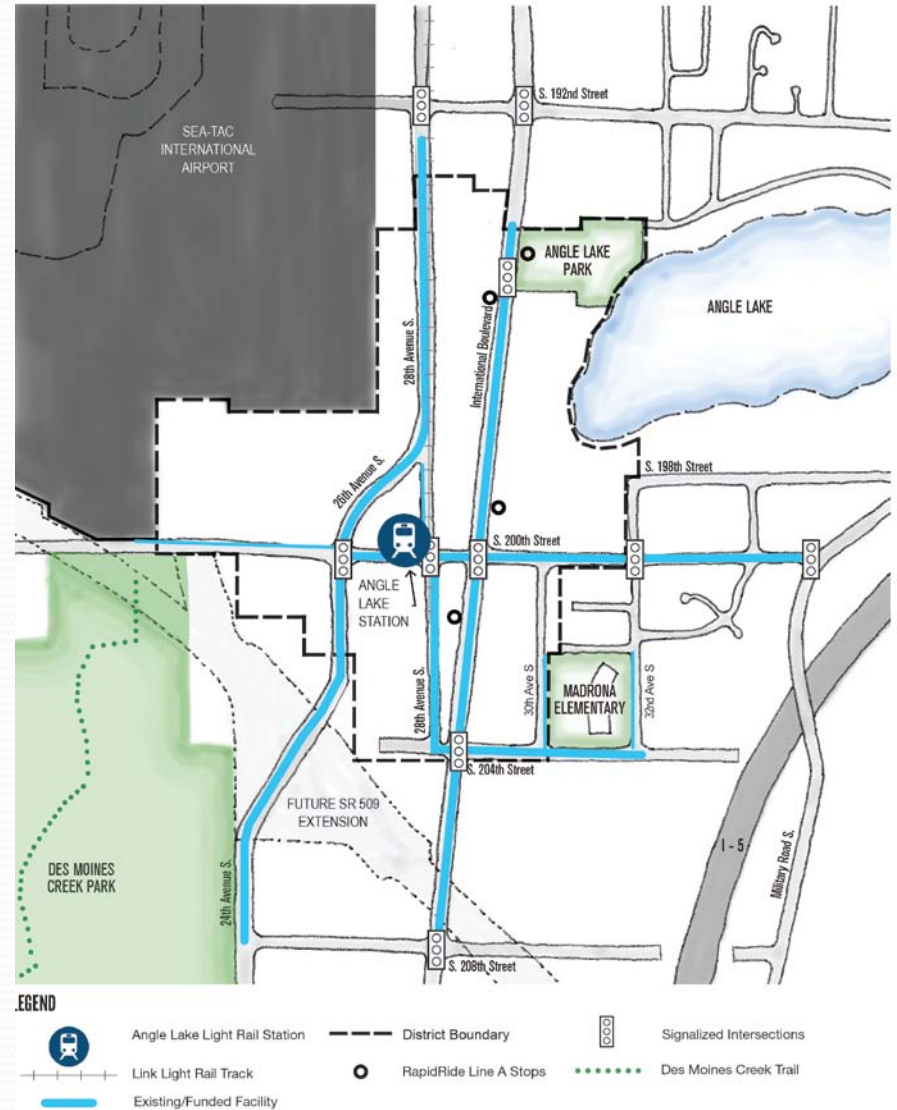


## Planned/Funded Transportation Infrastructure

- Sound Transit Improvements
- SeaTac's Connecting 28<sup>th</sup>/24<sup>th</sup> Project
- SR 509 Extension
- Lake To Sound Trail (Connection to Des Moines Creek Trail)

# The Pedestrian Environment

- **Connectivity**
  - East-west connections needed across Int'l Blvd
- **Pedestrian Facilities**
  - Sidewalks on most arterials, but not everywhere
  - Few pedestrian amenities



# The Bicycle Environment

- **Connectivity**
  - Minimal bike system in District (& entire City)
- **Bicycle Facilities**
  - Lack of facilities for all ages & abilities including:
    - *Separated facilities (bike lanes)*
    - *Shared facilities (shared roads with appropriate signage or shared use paths)*



## LEGEND

	Angle Lake Light Rail Station		District Boundary		Signalized Intersections
	Link Light Rail Track		RapidRide Line A Stops		Des Moines Creek Trail
	Funded Bicycle Facilities Separated (Bike Lanes)		Funded Bicycle Facilities Shared (Shared Use Path)		



## The Transit Environment

- **Bus**
  - Metro Transit RapidRide A Line on Int'l Blvd
  - Bus stops built adjacent to station to encourage Metro to provide service on S 200<sup>th</sup>
- **Light Rail**
  - 2016: Angle Lake Station opens
  - 2023: Light rail station opens near Highline Community College



### LEGEND



RapidRide Line A Stops



Angle Lake Light Rail Station



Signalized Intersections

## ANGLE LAKE DISTRICT STATION AREA PLAN REVIEW

### **Chapter 3: Economic Opportunity**

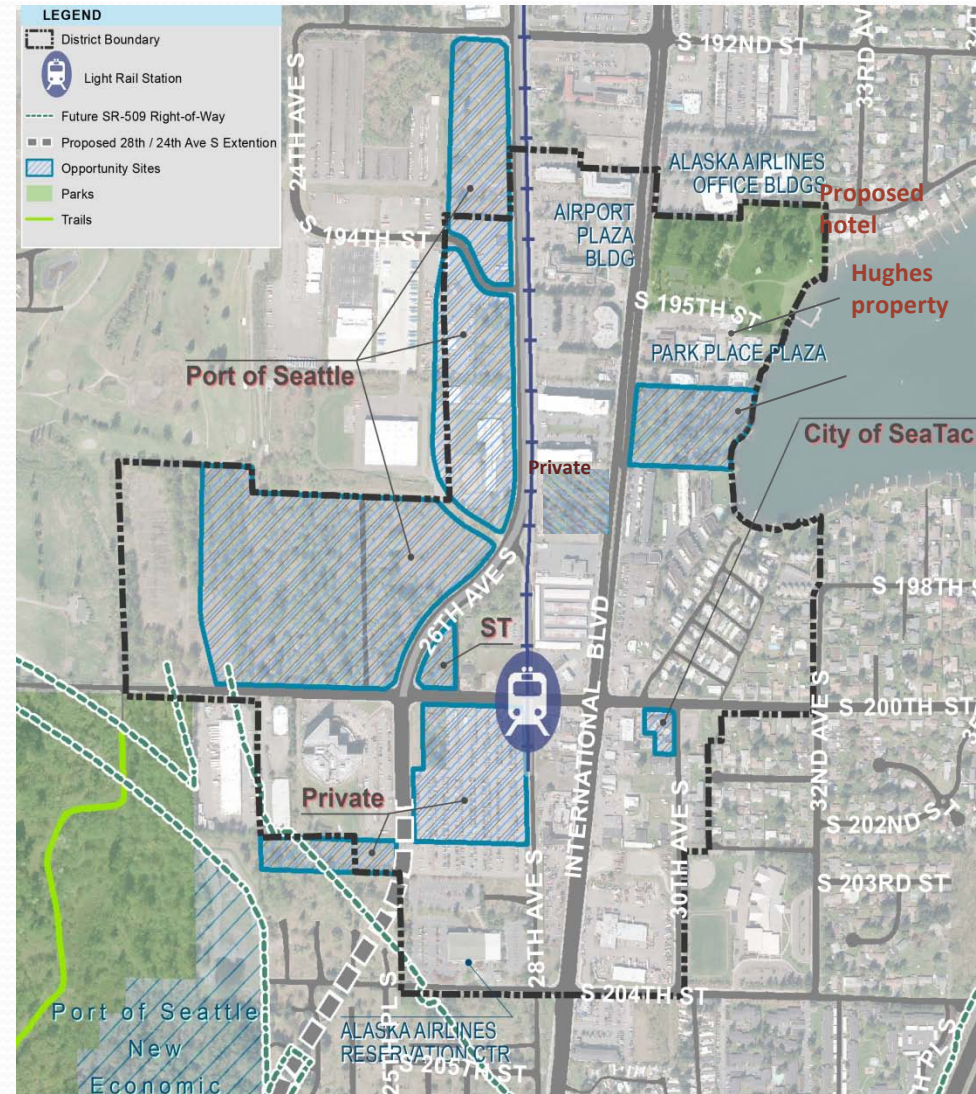
- Local Market Overview
- Development Opportunities

## Local Market Overview

- Strengths include existing employment base, amenities, transit infrastructure

## Development Opportunities

- Sound Transit TOD site
- Port of Seattle property
- Private development proposals
- City owned properties



## ANGLE LAKE DISTRICT PLAN REVIEW

### **Chapter 4: Community Vision**

- Summary of Community Engagement
- Angle Lake District Vision
- Guiding Principles



# Summary of Community Engagement

- **Outreach Activities**

- Business & Property Stakeholder interviews
- Questionnaires
- Community meetings
- Workshops

- **Unanticipated Enhanced Engagement Activities**

- Global Connections High School Student Project
- Global to Local & \$5K Growing Transit Communities Equity Grant



## **Transit Community**

The Angle Lake District will be a transit community that is culturally diverse, pedestrian-oriented, offers easy access to jobs, services, and open space, and supports a healthy lifestyle.

## **Generator of Economic Opportunity**

The District will provide opportunities for employment and entrepreneurship, and offer multiple housing types for people of all incomes, backgrounds and ages.

## **Connected and Multi-Modal**

Walking in the District will be safe and easy. The streets will be pedestrian friendly connecting people to the light rail station, lake, school and other destinations. Bicyclists will be connected to the station, local areas and the regions.

## **Center for the Community**

The light rail station will be the heart of the District Center. The District Center will be a people-intensive employment hub and community focal point. It will include a mix of office, commercial, retail and other development that supports high capacity transit, and provide workers, residents and visitors places to meet, eat, do errands and gather with friends.



## 12 Guiding Principles

### **High level guidance for achieving the community vision**

- **GP1** Promote social, economic and community-oriented opportunities and activities that contribute to the Angle Lake District as a center for community identity and as a unique and memorable place
- **GP2** Ensure a mix of transit-oriented land uses to encourage pedestrian activity in the District
- **GP3** Preserve and enhance public open spaces and public uses
- **GP4** Encourage people-intensive land uses around the Light Rail Station

## Guiding Principles (cont.)

- **GP5** Create a District Center as the focal point for the Angle Lake District
- **GP6** Increase connectivity to the Light Rail Station, and other destinations in the District, for all modes of transportation
- **GP7** Provide transportation connections that include all modes, are designed for all ages and abilities and accommodate anticipated uses and volumes to safely and efficiently move people and goods

## Guiding Principles (cont.)

- **GP8** Create a visually attractive, amenity rich, active and safe pedestrian environment through building, site and streetscape design
- **GP9** Emphasize pedestrian-oriented design and features within the District Center



## Guiding Principles (cont.)

- **GP10** Encourage transit-oriented and people-intensive development that contributes to the District as an employment center and hub of economic activity and opportunity
- **GP11** Promote the concentration of commercial uses, services, and employment opportunities within the District Center
- **GP12** Encourage the development of a variety of housing types and diverse businesses and activities that serve the community and the region

# Q & A

