



South 200th Link Extension

Construction Alert

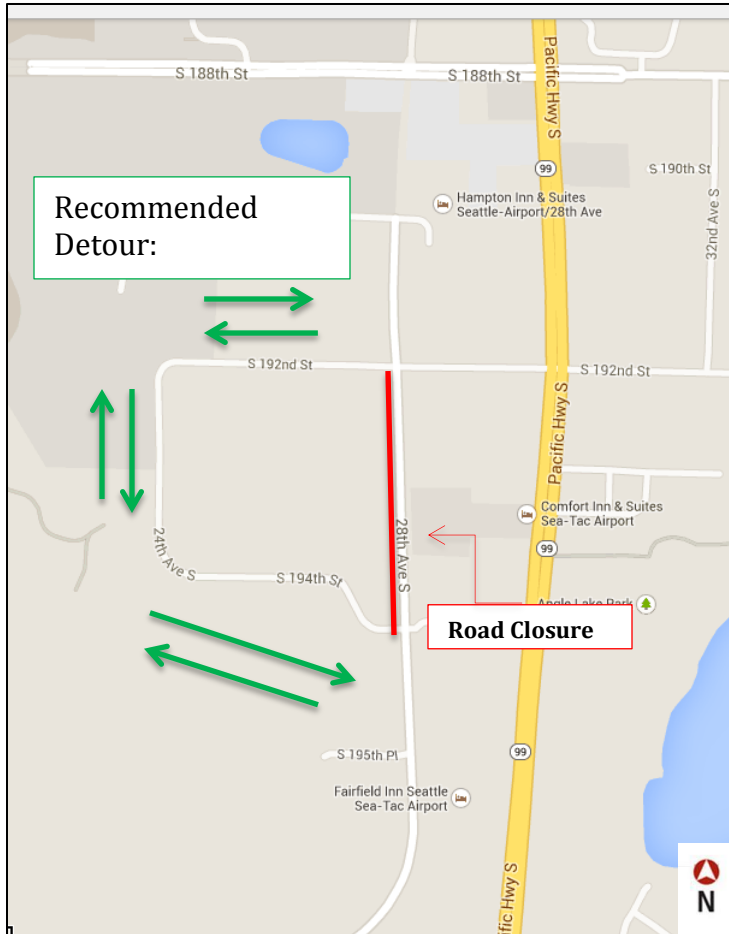
February 11, 2015

Temporary closure of 28th Avenue South in SeaTac

Beginning at 6:00 a.m. on Monday, February 16 and continuing until 6:00 p.m. on Wednesday, February 18, all travel lanes of 28th Avenue South will be closed between S. 194th Street and S. 192nd Street SeaTac. Local access to businesses and residents on 28th Avenue South, in the closure area will be maintained.

Sound Transit's contractors, PCL Civil Constructors and KLB Construction will close the road to install a new sewer line across the roadway.

Detour signs will be posted to get motorists and pedestrians safely around the construction work zone.



Recommended detours:

- Northbound traffic on 28th Avenue South will be detoured left onto S. 194th Street, and that road will loop around to S. 192nd Street for access to 28th Ave South or International Blvd.
- Southbound traffic on 28th Avenue South will be detoured right onto S. 192nd Street and that road will loop around to S. 194th Street for access to 28th Avenue South.

For more information on this activity, or to receive the most current information about the South 200th Link Extension, please contact Jennifer Lemus at 206-398-5314 or jennifer.lemus@soundtransit.org.

Project website: soundtransit.org/S200thstreet

24-Hour Construction Hotline: 1-888-298-2395

Sound Transit plans, builds and operates regional transit systems and services to improve mobility for Central Puget Sound. For information about Sound Transit projects or services, visit us online at www.soundtransit.org or call 1-800-201-4900 / TTY Relay: 711. For information in alternative formats, call 1-800-201-4900 / TTY Relay: 711 or e-mail accessibility@soundtransit.org.