

CITY OF SEATAC

Transportation Element Update & Transportation Master Plan

Presented by

transpogroup 

City Council Study Session
February 10, 2015





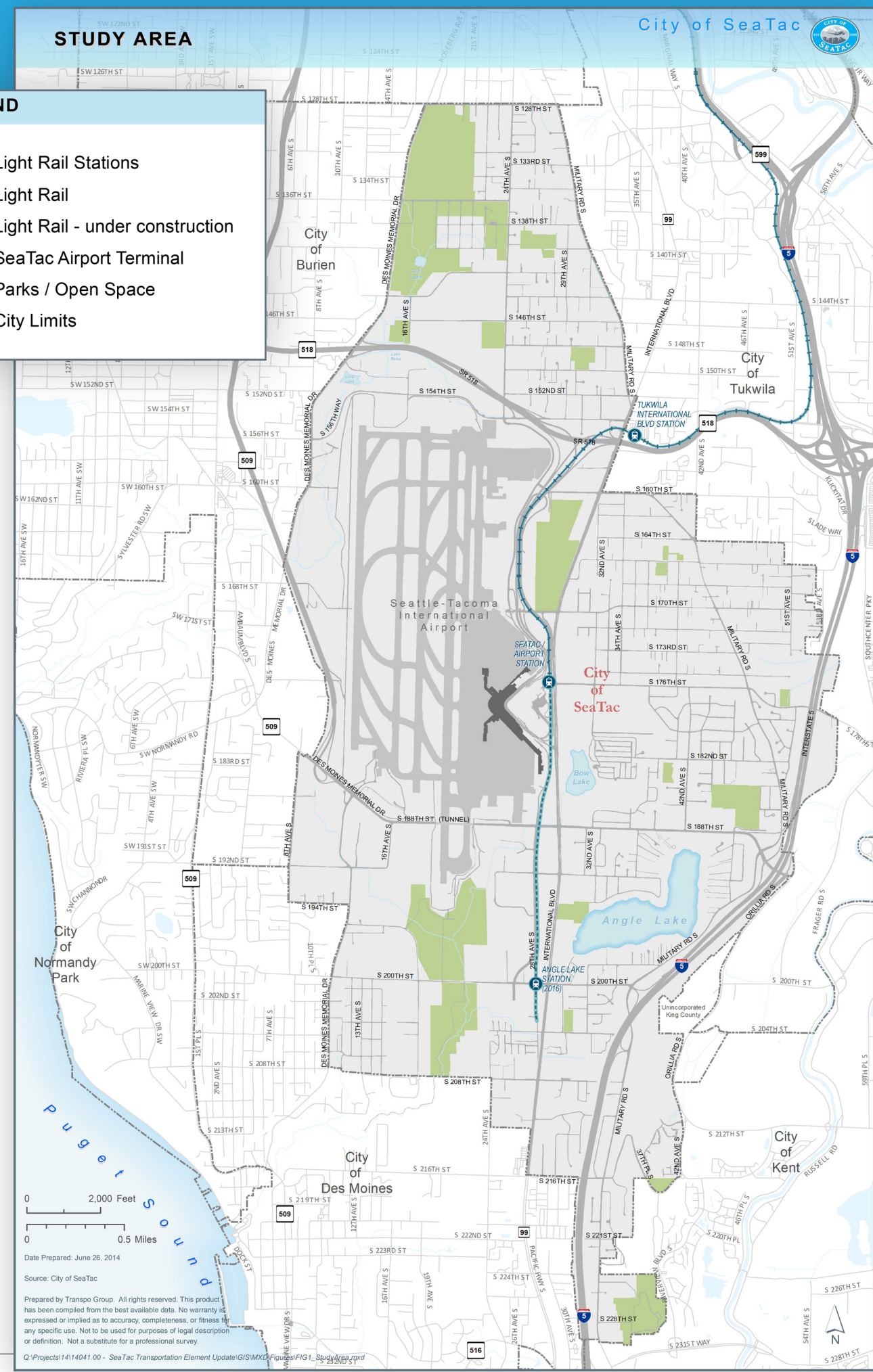
Agenda

- > Meeting Objectives
- > Transportation Project and Program Cost Estimates
- > Transportation Revenue Forecasts
- > Balancing the Plan
- > Next Steps
- > Improvement Project Graphics (for reference)

Presented by
transpogroup

LEGEND

- Light Rail Stations
- Light Rail
- Light Rail - under construction
- SeaTac Airport Terminal
- Parks / Open Space
- City Limits



Prepared by Transpo Group. All rights reserved. This product has been compiled from the best available data. No warranty is expressed or implied as to accuracy, completeness, or fitness for any specific use. Not to be used for purposes of legal description or definition. Not a substitute for a professional survey.



Input and Direction We are Seeking from City Council

- > Is the Transportation Element on the Right Path?
 - Anything missing?
 - Anything uncomfortable?
- > Program Costs Greatly Exceed Projected Revenues
 - Which priorities are most important to you when selecting transportation projects?
 - If additional revenues are desired:
 - » What are you most comfortable with exploring?
 - » What are you least comfortable with exploring?





Transportation Project Cost Range – Preliminary Estimates (2015-2035) (Costs in 2014 dollars)



Millions of 2014 Dollars⁴

| | |
|---|-----------------------|
| A. Multimodal Roadway and Intersection ¹ | \$300 to \$340 |
| B. Safe and Complete Streets Projects ² | \$110 to \$130 |
| C. Maintenance, Operations, and Administration ³ | \$ 80 to \$ 130 |
| Total | \$490 to \$600 |

1. Projects include pedestrian and bicycle facilities as part of roadway improvement (excludes already expended funds.)
2. Other pedestrian and bicycle projects not included in category A.
3. Includes street overlays, maintenance of signals, signs, markings, etc., staffing, debt service, and other related costs.
4. Costs do not include project expenditures or costs to be covered by other agencies.





Forecast of Existing City of SeaTac Transportation Revenues (2015-2035) (Revenues in 2014 dollars)



Millions of 2014 Dollars

| | |
|--|--------------|
| A. State & Federal Grants | \$ 56 |
| B. Motor Vehicle Fuel Tax (MVFT) | \$ 11 |
| C. Parking Tax | \$ 98 |
| D. Transportation Impact Fees ¹ | \$ 3 |
| Total | \$168 |



1. Impact fee revenue forecasts based on historical trends.
Impact fee rates will be updated as part of Transportation Master Plan



Balancing the Plan – Projects Priorities

Support and Align with Council's Vision:

The City of SeaTac is a premier, global community, offering a solid, sustainable economy and a healthy, inclusive, and vibrant quality of life.





Balancing the Plan – Projects Priorities

Support and Align with Council's Vision:

The City of SeaTac is a premier, global community, offering a solid, sustainable economy and a healthy, inclusive, and vibrant quality of life.

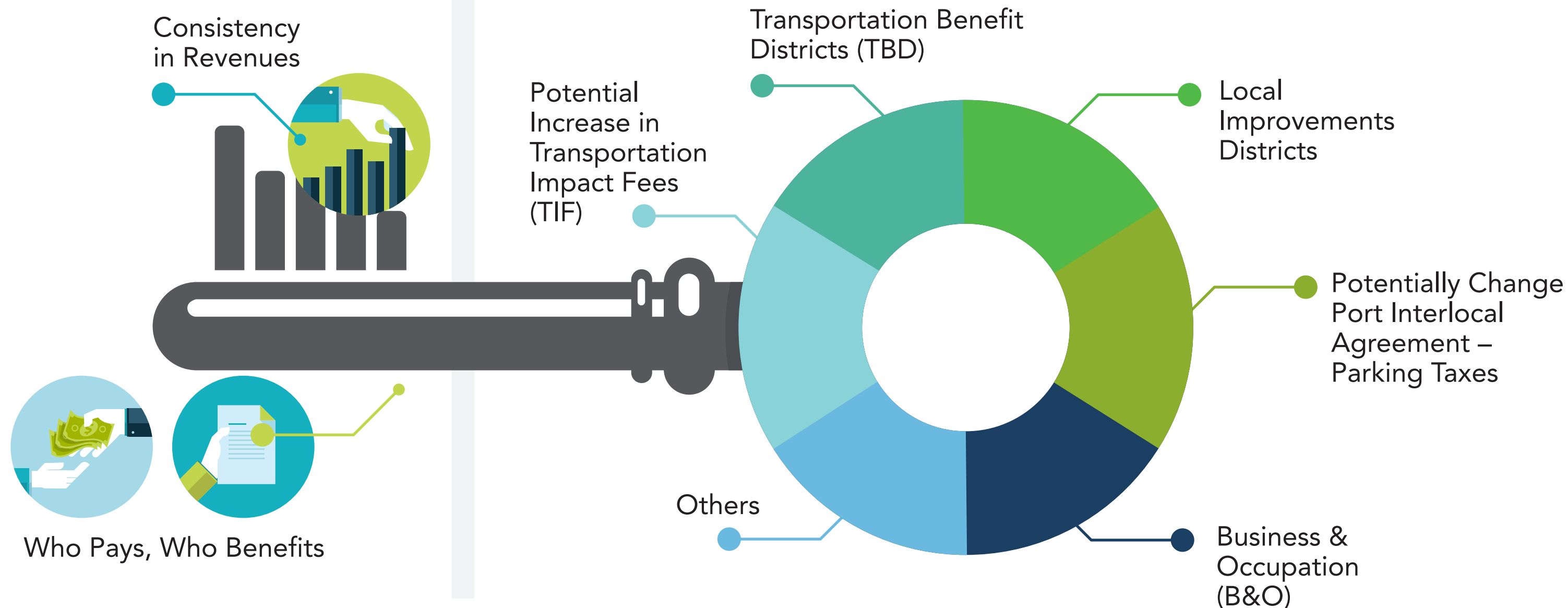




Balancing the Plan – Options for Increasing Revenues

KEY CONSIDERATIONS

OPTIONS





Balancing the Plan – Example Concept

TRANSPORTATION PROGRAM ELEMENT

Maintenance, Operations, and Administration



PROJECT PRIORITIES

- > Safety
- > Preservation
- > Multimodal

POSSIBLE ADDITIONAL FUNDING

- > Transportation Benefit District (TBD)
- > B&O Tax
- > General Funds

Multimodal Roadway and Intersection Improvements



- > Safety
- > Economic Development
- > Multimodal

- > Increased Impact Fees
- > Leverage Grants
- > Additional Funding with Port
- > Local Improvement Districts

Safe & Complete Streets



- > Safety
- > Connectivity
- > Transit Access
- > Completing the System
- > Multimodal

- > Transportation Benefit District (TBD)
- > Real Estate Excise Tax (REET)



Next Steps for Transportation Element – In Process



Finalize list of transportation improvements & programs

Prepare project cost estimates

Define Level of Service/Concurrency Program Strategy

Complete funding analyses/impact fee update

Assign project priorities

Update transportation policies

Prepare Draft Transportation Element

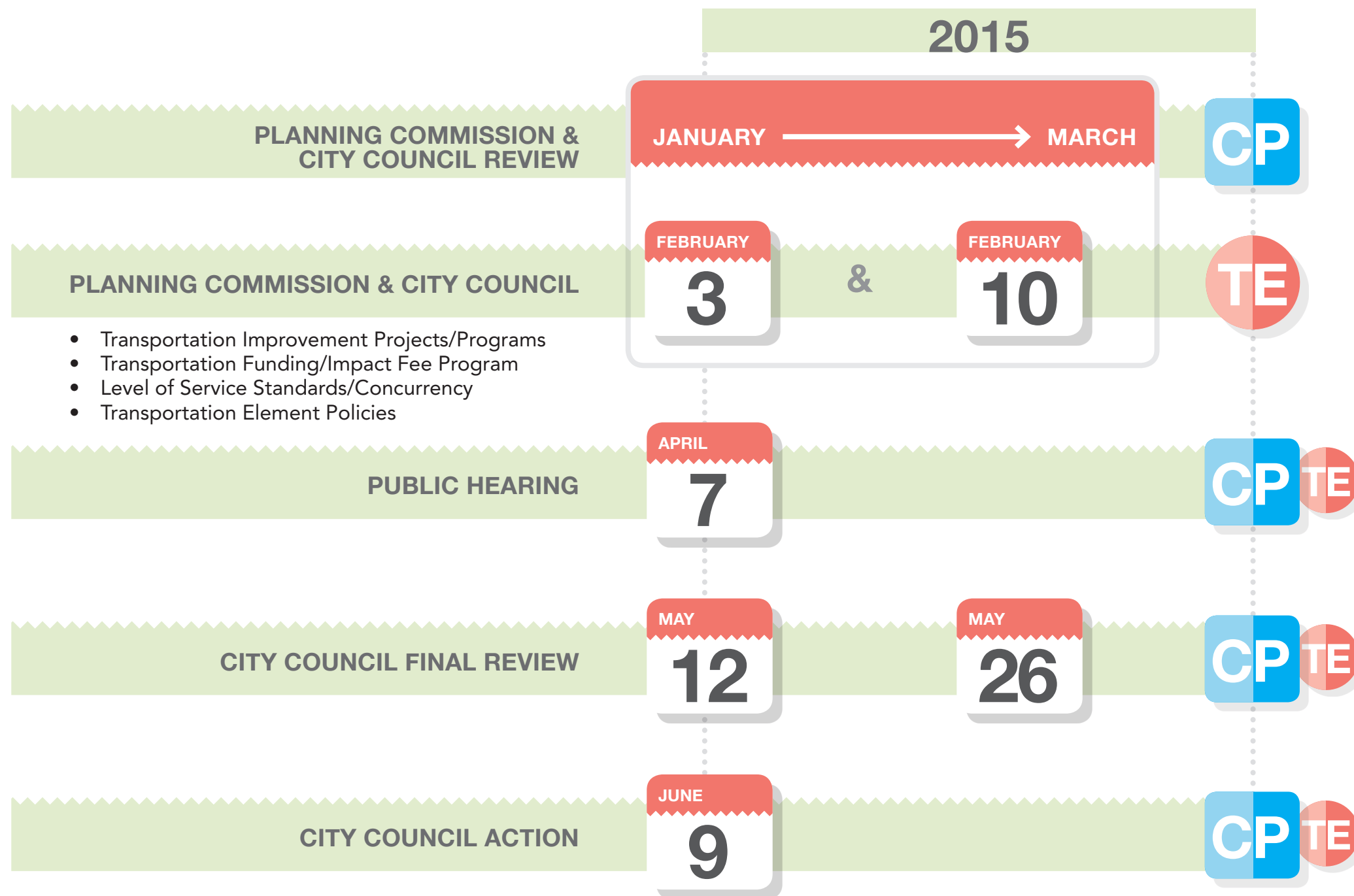
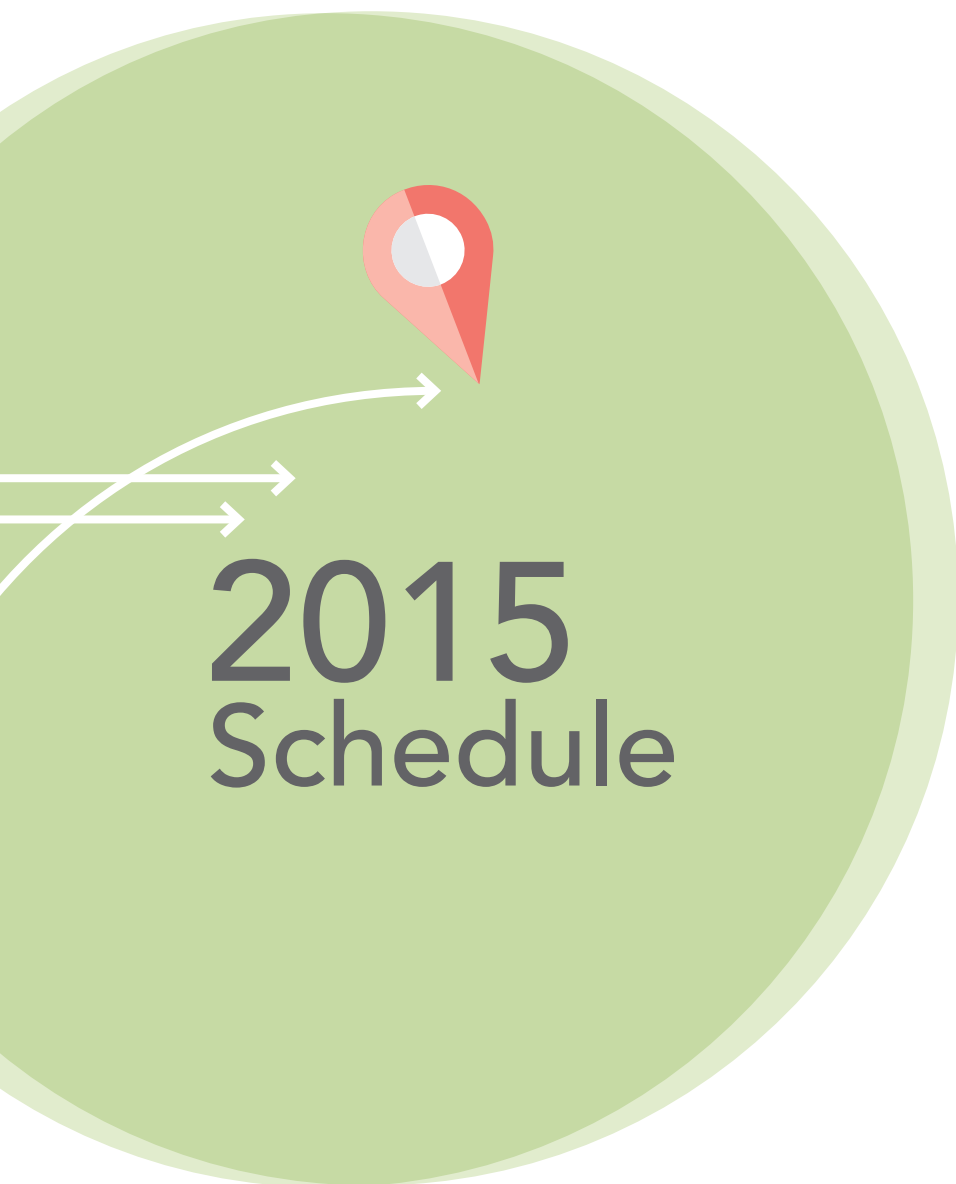
Prepare SEPA review

Meet with Planning Commission
and City Council in February

Ongoing public outreach as part of the
Comprehensive Plan update process



Schedule for Comprehensive Plan **CP** and Transportation Element **TE**



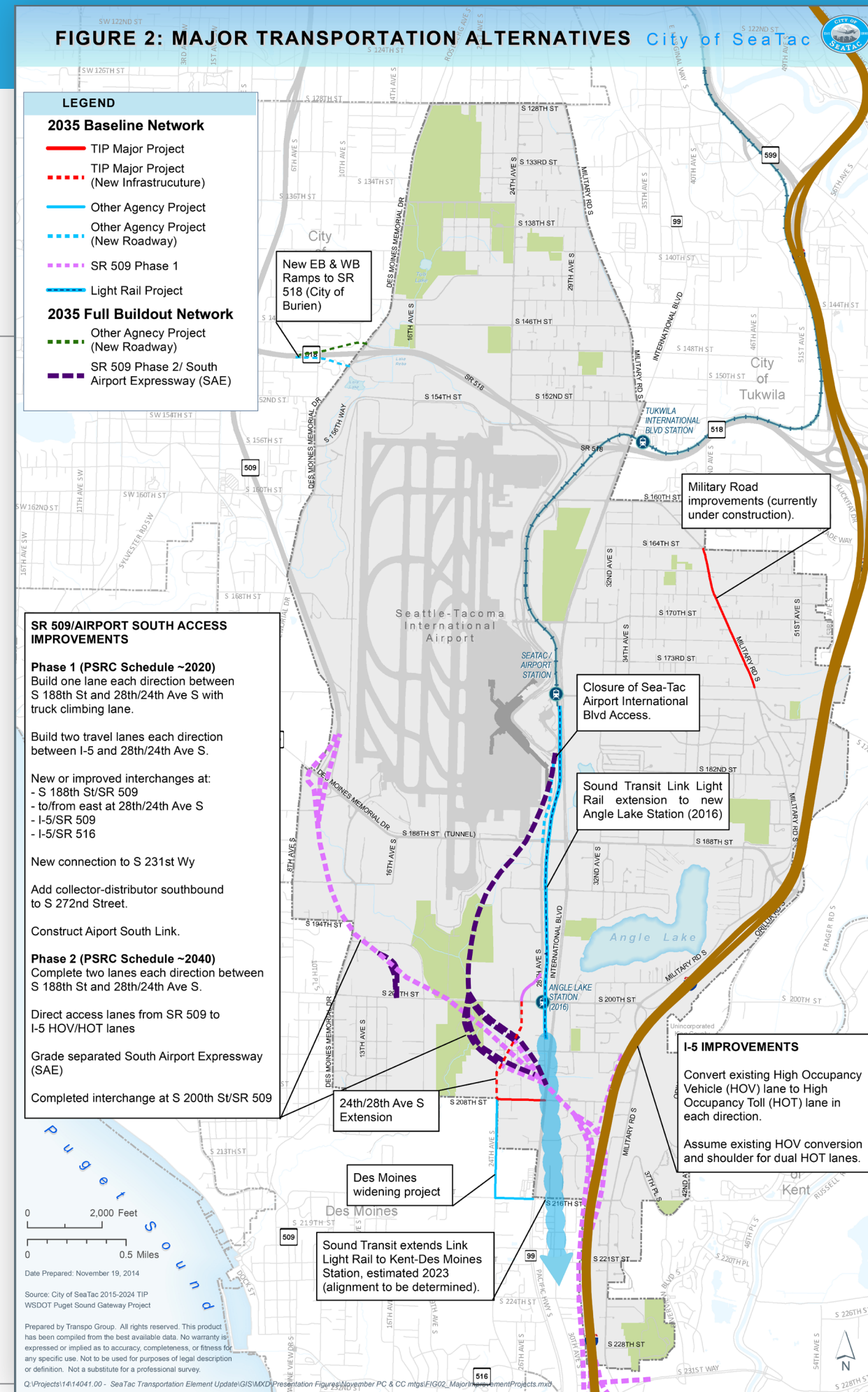


For Reference



Framework for the 2035 Transportation Element

- > **By 2025:** Target funding and construction of SR 509 Phase I and Interim Airport South Access
- > **By 2035:** Work with Port and Regional Stakeholders to advance South Airport Expressway
- > **By 2040:** Continue working with WSDOT and Regional Stakeholders to advance Phase 2 of SR 509, consistent with PSRC Vision 2040





MULTIMODAL TRANSPORTATION IMPROVEMENT PROJECTS

Existing 2015-2024 Transportation Improvement Program (TIP)

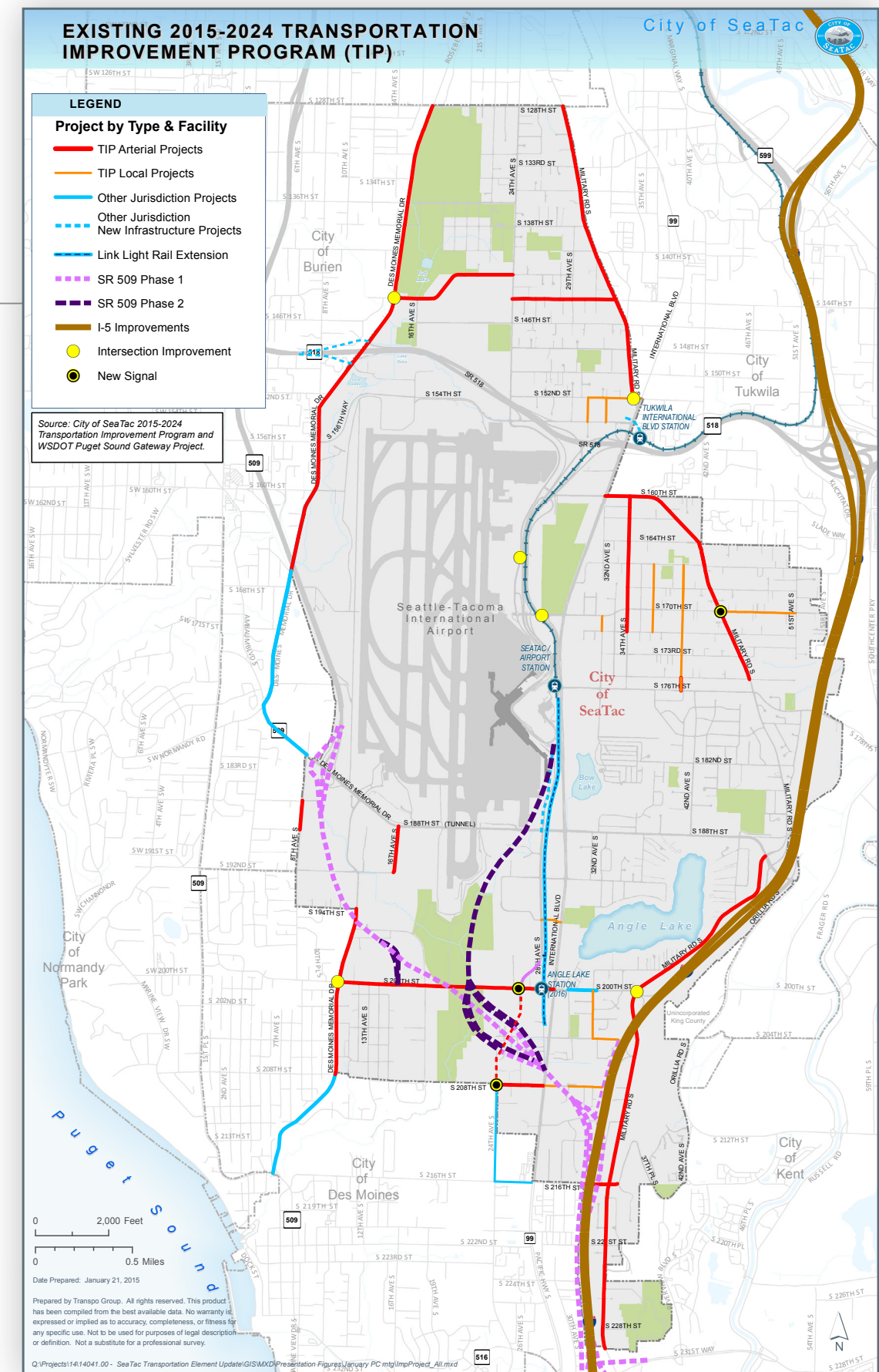
Other Agency Improvements

- > SR 509 Extension
 - Phase 1 (by 2025)
 - Phase 2 (by 2040)
- > South Airport Expressway (SAE)
 - Interim 24/28th Ave S (by 2025)
 - Grade Separated Expressway (by 2035)
- > SR 518/SR 99 Improvements

SeaTac Improvements

- > 24/28th Ave S Corridor completion
- > Upgrading city arterials to urban standards
- > Circulation and access roadways
- > Intersection operational and safety improvements
- > Sidewalk improvements

Presented by
transpogroup





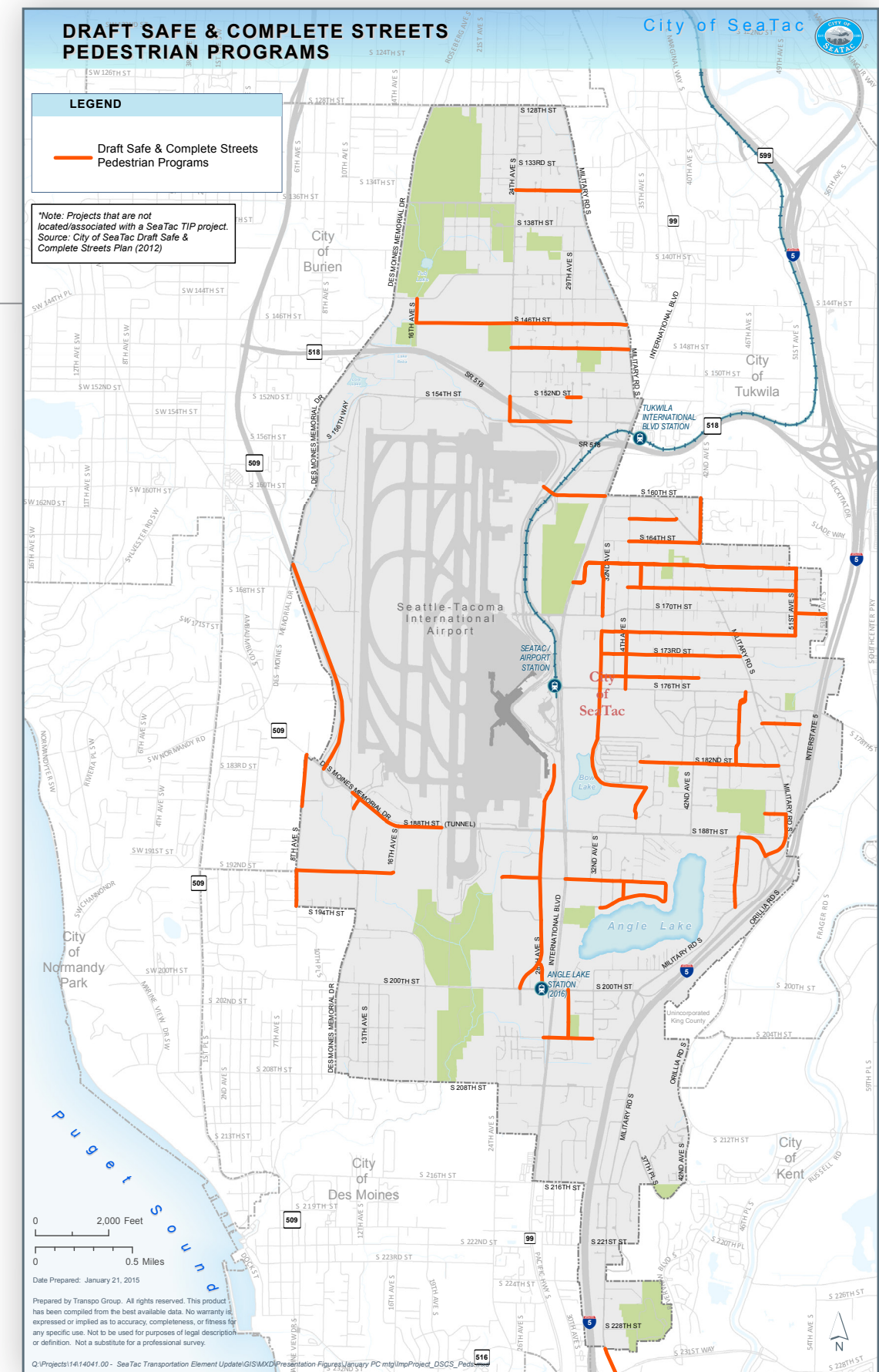
MULTIMODAL TRANSPORTATION IMPROVEMENT PROJECTS

Safe & Complete Streets: Pedestrian Improvement Program

Improve SeaTac's Pedestrian Network

- > Close gaps in the system
 - Small gaps to link existing facilities
 - Large gaps to link neighborhood and/or commercial districts
- > Safe walk to school routes
- > Cross major barriers
- > Access to transit

Presented by
transpogroup





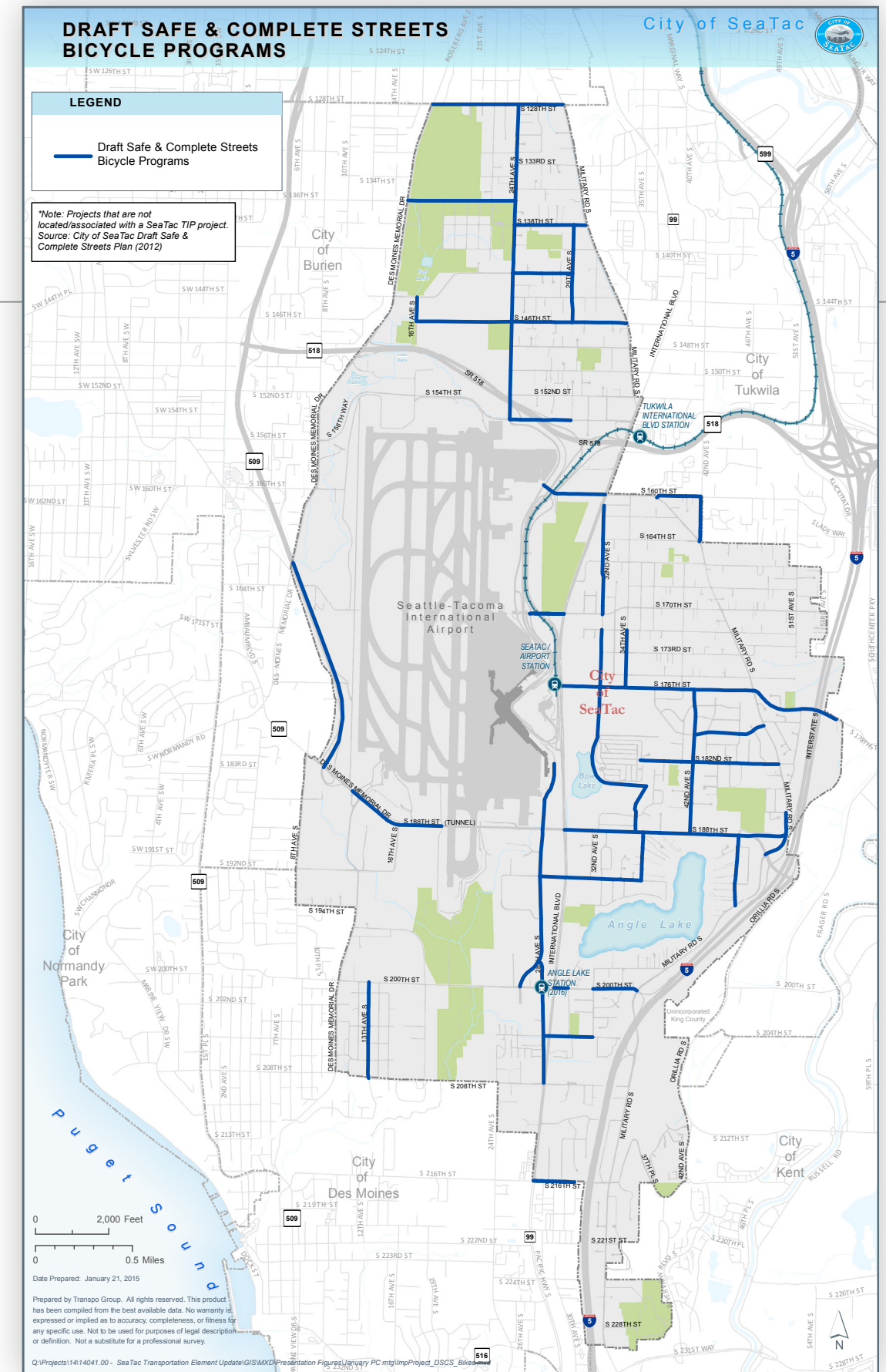
MULTIMODAL TRANSPORTATION IMPROVEMENT PROJECTS

Safe & Complete Streets

Bicycle Improvements Program

Improve SeaTac's Bicycle Network

- > Close gaps in the system
 - Small gaps to link existing facilities
 - Large gaps to link neighborhood and/or commercial districts
- > Cross major barriers
- > Access to transit





MULTIMODAL TRANSPORTATION IMPROVEMENT PROJECTS

Additional Improvement Projects

2015 Transportation Master Plan

Freeway Ramp Improvements

- > Realign SR 518 WB Off-Ramp at S 154th with 32nd Ave S
- > New SR 518 WB Off-Ramp connecting to south leg of S 154th St/International Blvd (IB) intersection

Intersection Improvements

- > 188th St/IB: extend NB right turn lane w/ redevelopment
- > New Signal @ 154th St/32nd Ave/518 Off-Ramp
- > All-way stop-control @ 150th St/Military Rd

Roadway Improvements

- > 200th Street Road Diet

Improvement Programs

- > International Blvd Safety Program
- > Pedestrian Crossing Program/Criteria (not on map)
- > Radar Speed Sign Program/Criteria (not on map)

